

A group of approximately 15 students are posing in a hallway. They are wearing red t-shirts with a logo. Some are standing on a red metal structure that looks like a bridge or a competition apparatus. One student in the foreground is wearing a white jacket and white pants. The background shows a hallway with recessed lighting and a red carpet.

**IPRO 315**

**ASCE Great Lakes Regional  
Conference  
&  
Steel Bridge Competition  
April 29, 2006**





# Steps to Success

## 1. Fundraising

- Sent letters to
  - CAE Alumni
  - CAE Board Members
  - Past Business Sponsors
  - New Businesses
  - IIT Office of the President
- Follow up calls to letter recipients
- Request for assistance from ASCE-Illinois Section

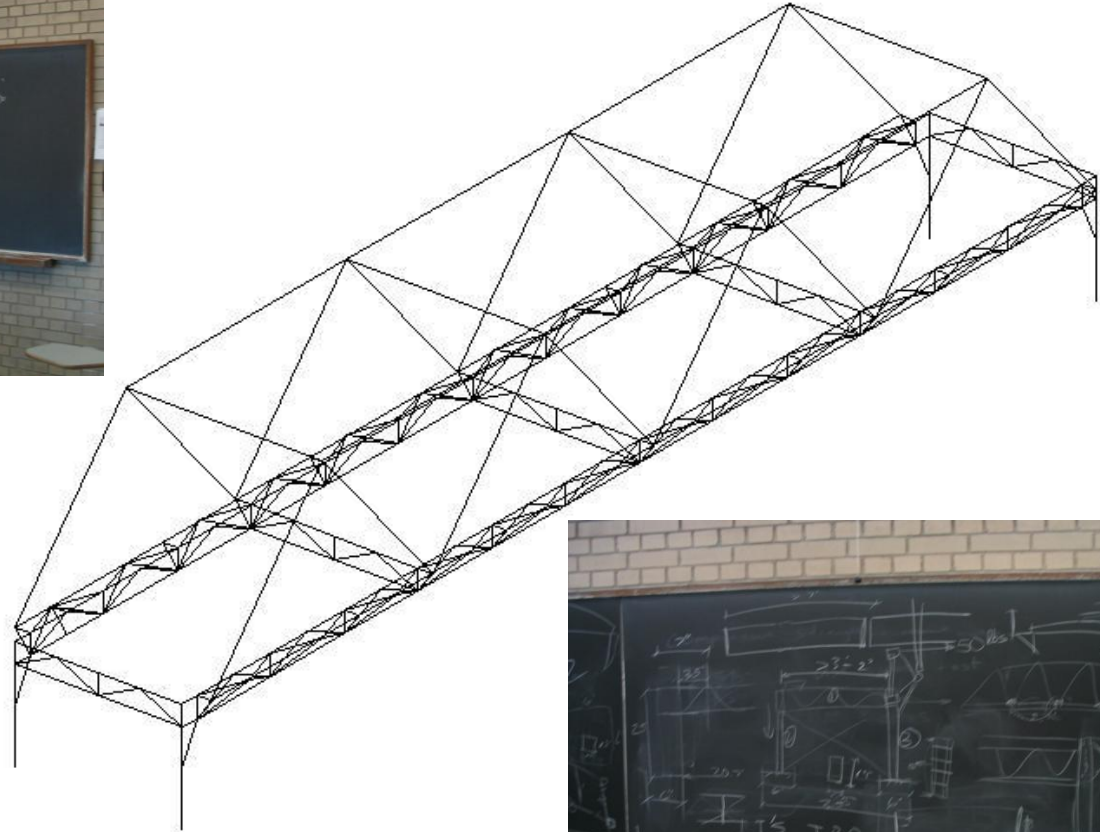
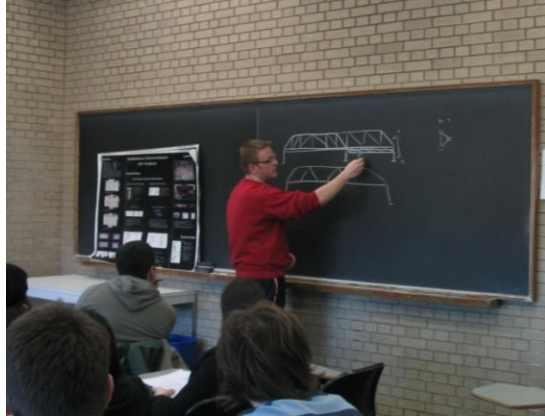
### Fundraising Team:

- Naomi Heler
- Valerie Roustan
- Erum Imam
- Dennis Sanz
- John Purpura

**Total Fundraised ≈ \$6000**

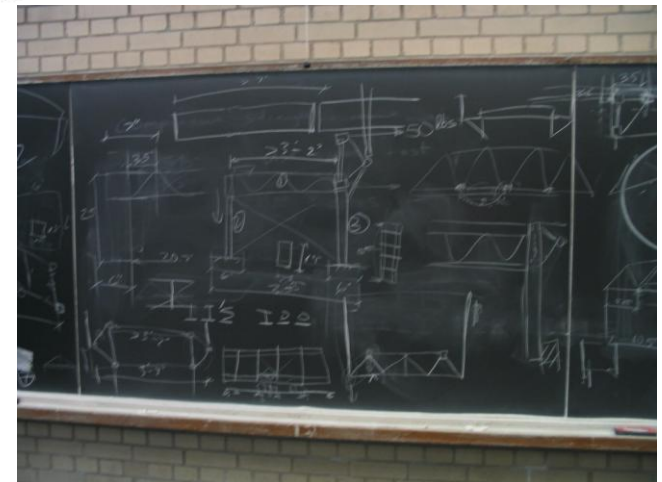
**ALL Steel was Donated for FREE!**

## 2. Designing the Bridge



Design Team:

- Ivan Bajkovec
- Alek Babel
- Tim Winter
- Vlad Kovacovic



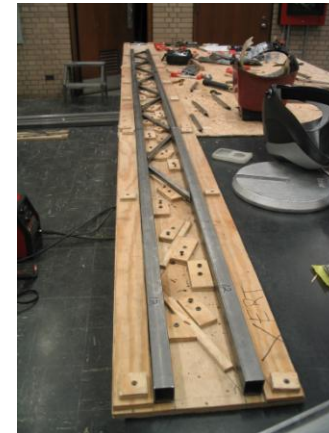


### 3. Fabrication of the Bridge



#### Fabrication Team:

- Marco Galvan
- Kyle Koning
- Ryan Jay
- Syed Kazi
- Luke Shorette
- Mira Racheva
- Hermen Sales
- Dennis Sanz
- Emiliano Giana
- Matt Helland



# The Bridge





## 4. Building & Load Testing the Bridge at the Competition



Build Team:

- Kyle Koning
- Mira Racheva
- Luke Shorette
- Alek Babel



## Competition Results

- 4<sup>th</sup> Place Overall In Steel Bridge Competition
- 3<sup>rd</sup> Place in Aesthetics
- 3<sup>rd</sup> Place in Lightness





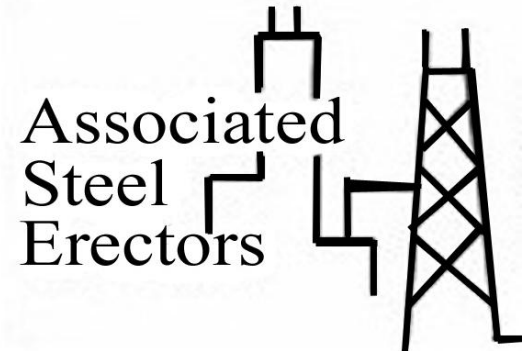
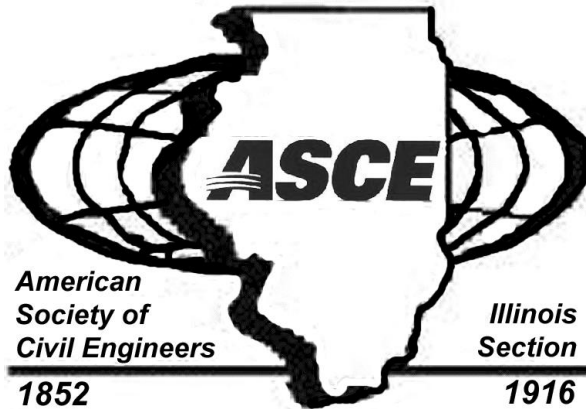
## IPRO 315 Team



**Members:** Alek Babel, Ivan Bajkovec, Marco Galvan, Emiliano Giana, Matt Helland, Naomi Heler, Ross Hiner, Erum Imam, Ryan Jay, Syed Kazi, Kyle Koning, Vladimir Kovacovic, John Purpura, Mira Racheva, Valerie Roustan, Hermen Sales, Dennis Sanz, Luke Shorette, Tim Winter

**Advisor:** Jeff Budiman

Special Thanks to our Sponsors:



**HNTB**



**NOVAK**

**E P S T E I N**

Garbe Iron Works

D & D Concrete, L.L.C.

**Autodesk**

**CDM**

**COLLINS  
ENGINEERS  
INC.**