

# PROGRAMMING

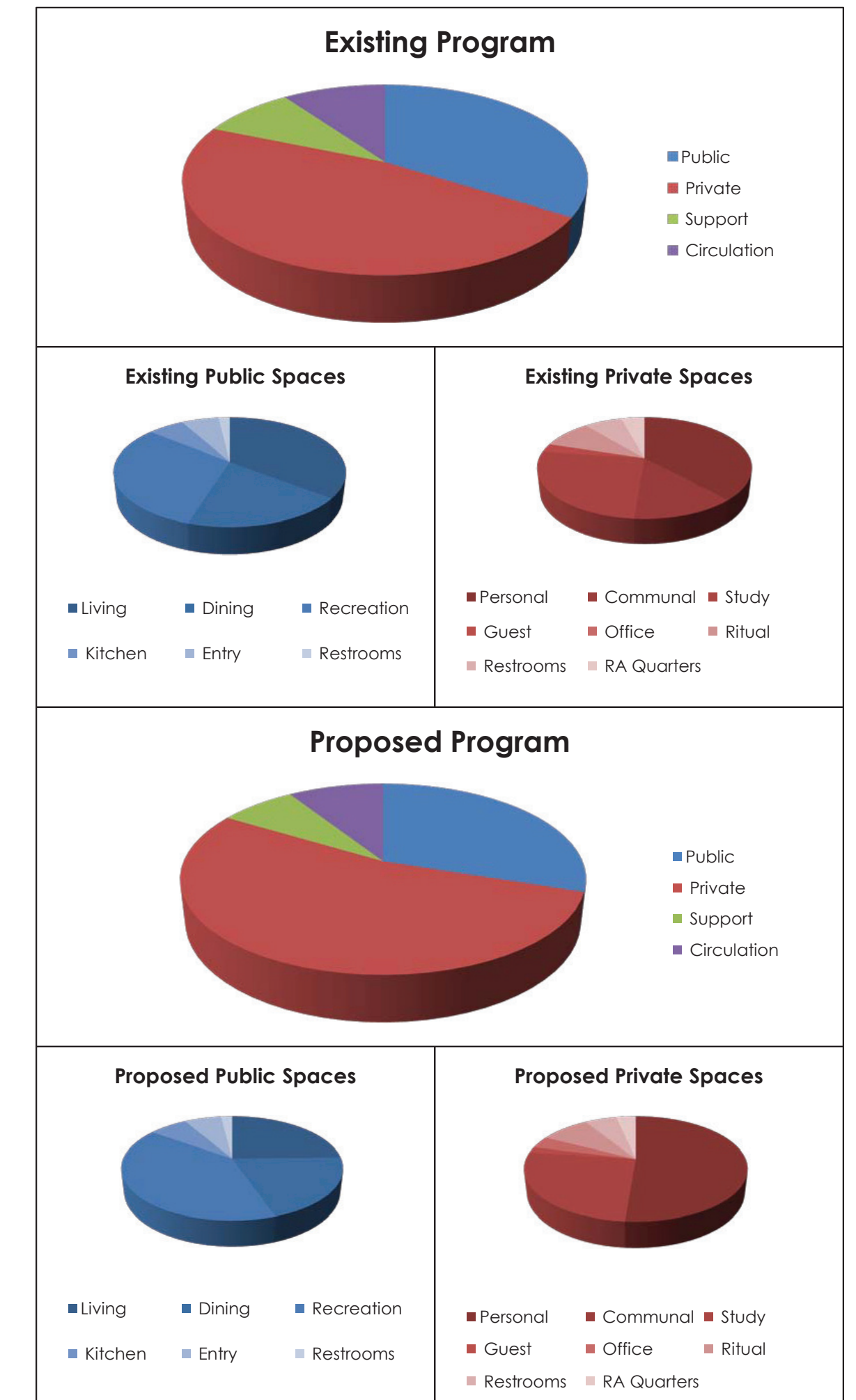
## Proposed Redistribution



Exterior view of proposed third floor

### Delta Tau Delta Shelter Renovation

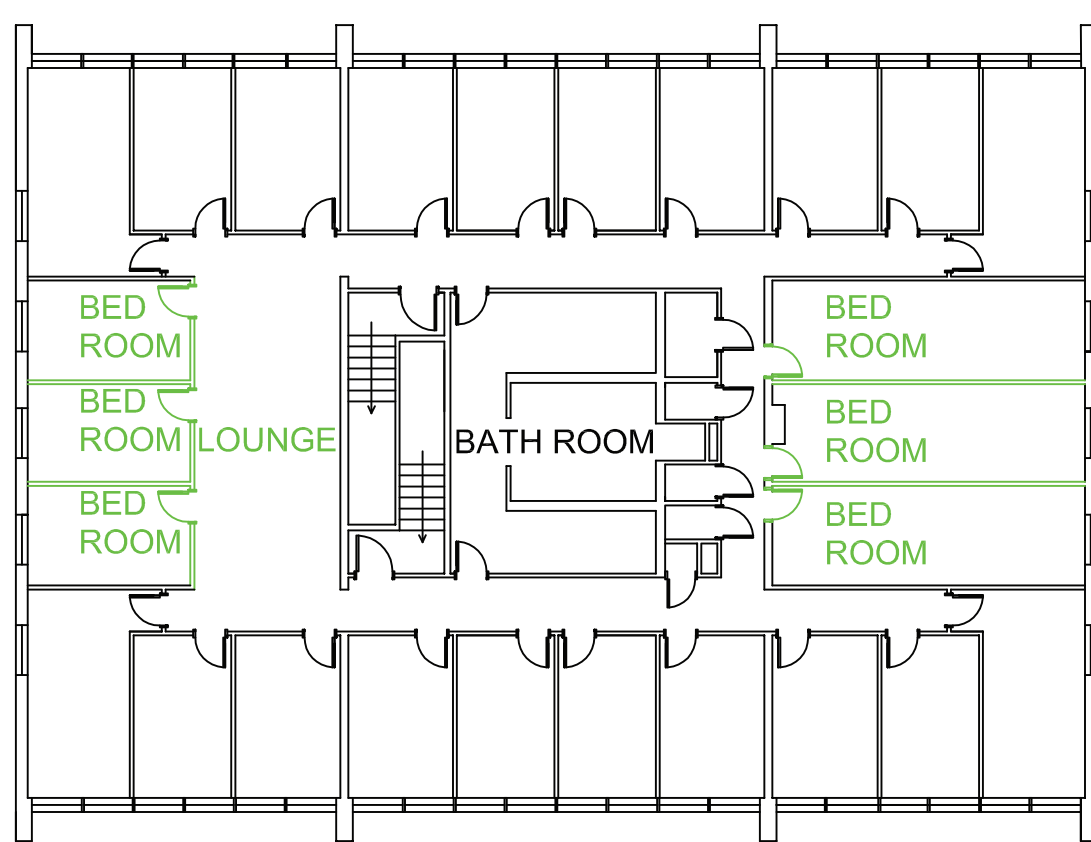
Architectural Program	Existing Area	Proposed Area
<b>I. Public Spaces:</b>		
Living room	1700 sq. ft.	1130 sq. ft.
Dining room	925	925
Recreation	1484	1850
Kitchen	289	310
Entry/Foyer	296	296
Restrooms (Public)	90	90
<b>Total Public</b>	<b>4784 sq. ft.</b>	<b>4601 sq. ft.</b>
<b>II. Private Spaces</b>		
Personal rooms	2520 sq. ft.	4200 sq. ft.
Communal sleeping rooms	884	0
Study rooms	1721	2121
Guest sleeping rooms	182	140
Offices/archives	0	300
Ritual room	600	700
Restrooms (Private)	450	450
RA's quarters and restroom	280	280
<b>Total Private</b>	<b>6637 sq. ft.</b>	<b>8191 sq. ft.</b>
<b>III. Support</b>		
Mechanical room	390 sq. ft.	390 sq. ft.
Laundry	238	100
Storage lockers (personal)	210	210
Storage closets	156.5	156.5
Entry closets	132	132
Mail boxes	24	24
Pantry	49	49
Cleaning closets	40.5	40.5
<b>Total Support</b>	<b>1240 sq. ft.</b>	<b>1113 sq. ft.</b>
<b>IV. Circulation</b>		
	1383 sq. ft.	1390 sq. ft.
<b>Inhabitable Space (less Support and Circ.):</b>	<b>11421 sq. ft.</b>	<b>12792 sq. ft.</b>
<b>Total Space:</b>	<b>14044 sq. ft.</b>	<b>15295 sq. ft.</b>



## Proposed Architectural Solutions

### Basement Excavation Proposal

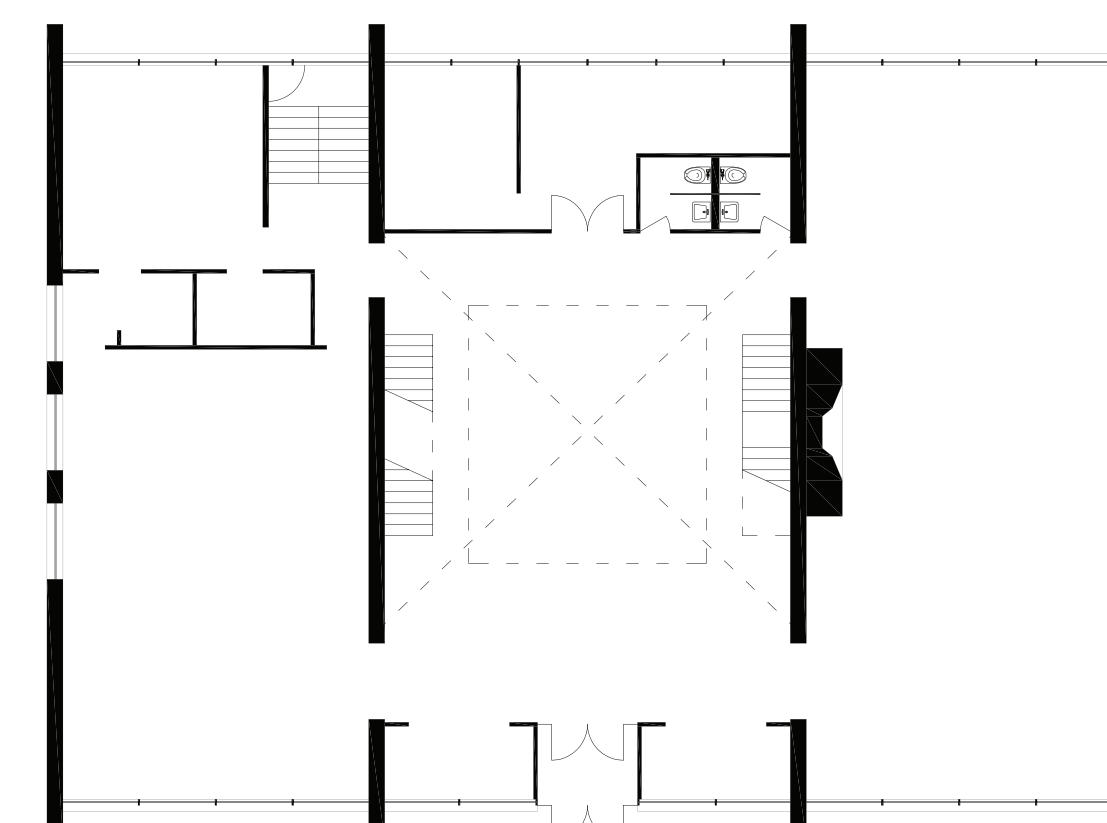
### Third Floor Proposal



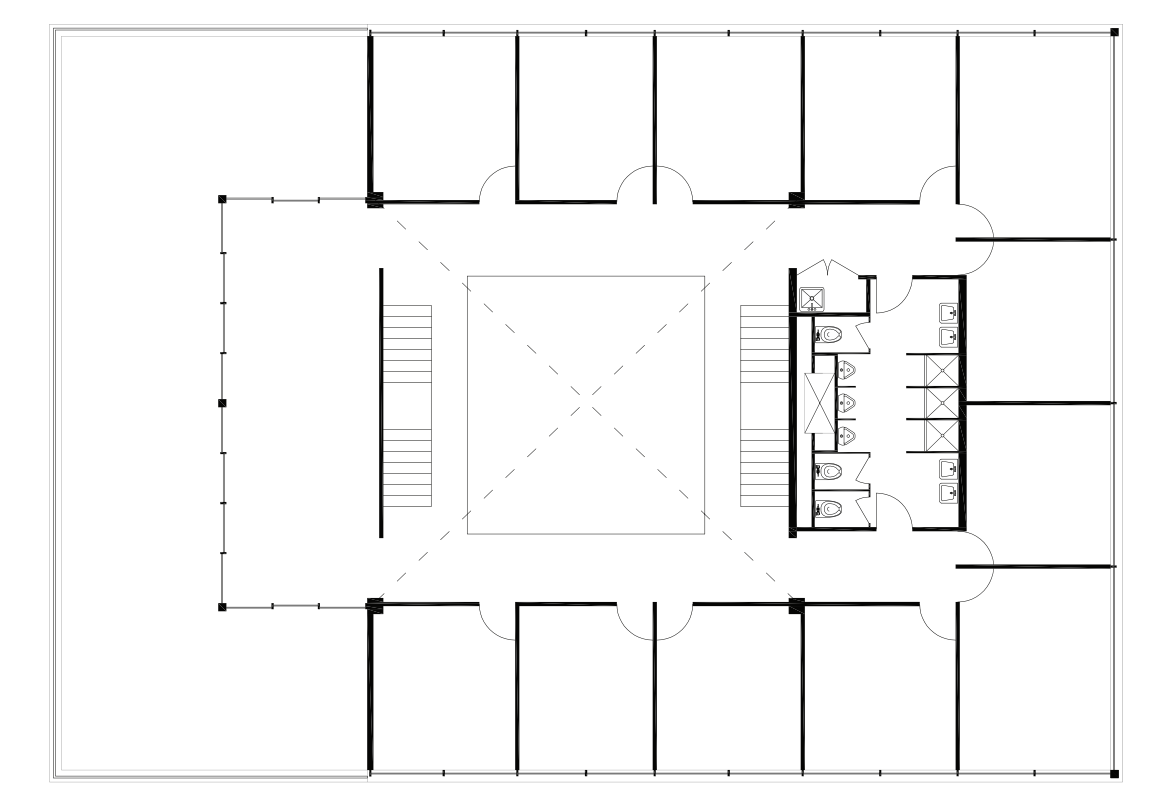
Second Floor  
Scale: 1/16"=1'-0"



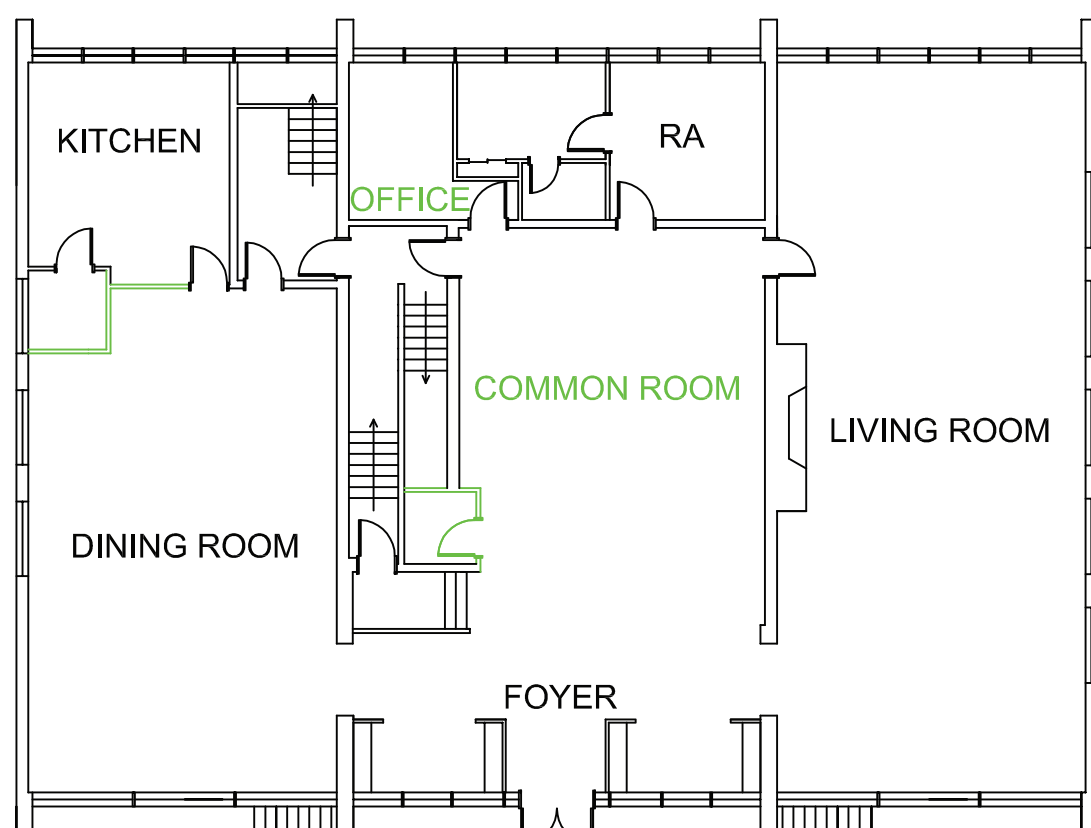
Interior view of proposed atrium



Ground Floor  
Scale: 1/16"=1'-0"



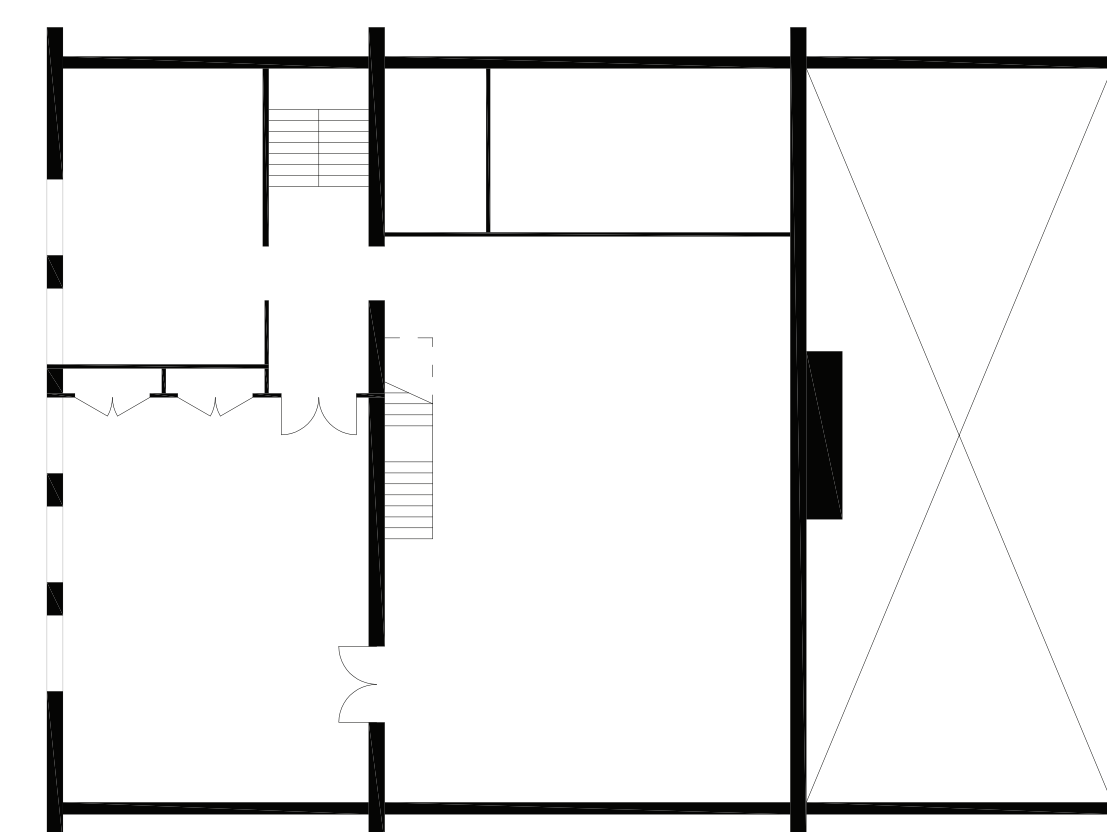
Third Floor



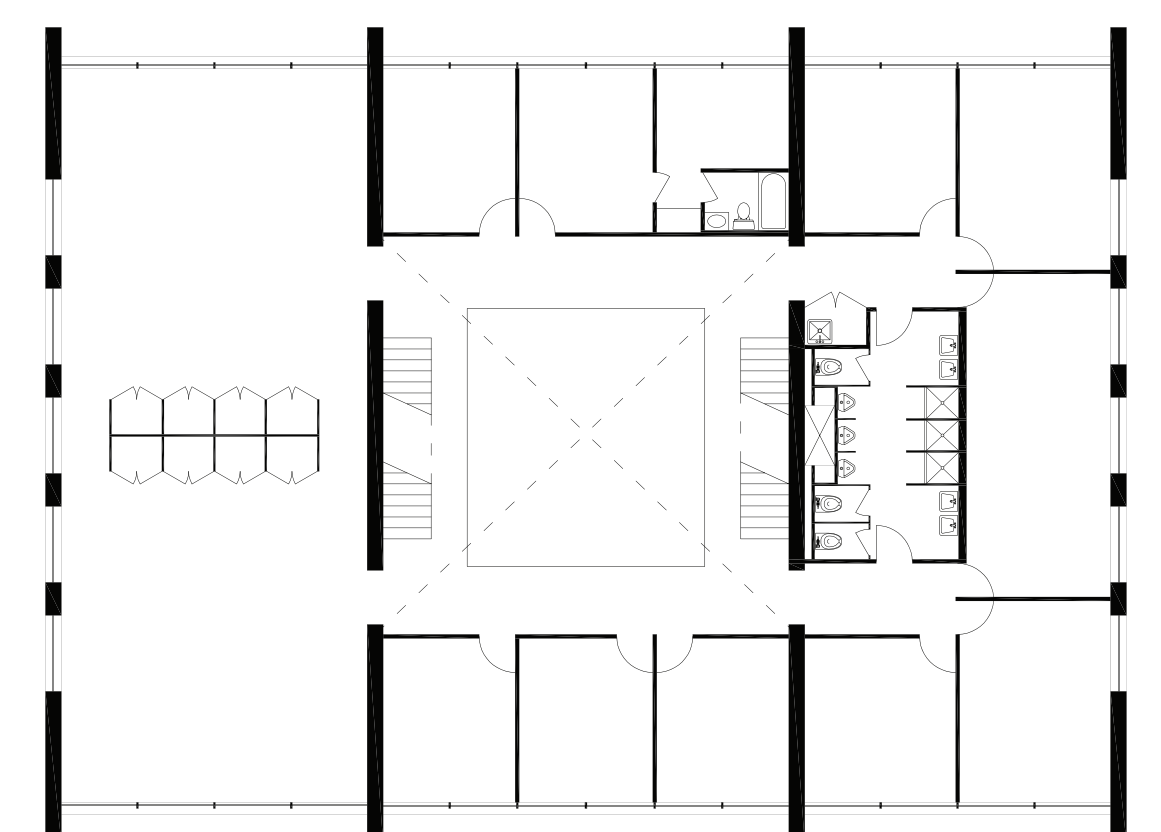
Ground Floor



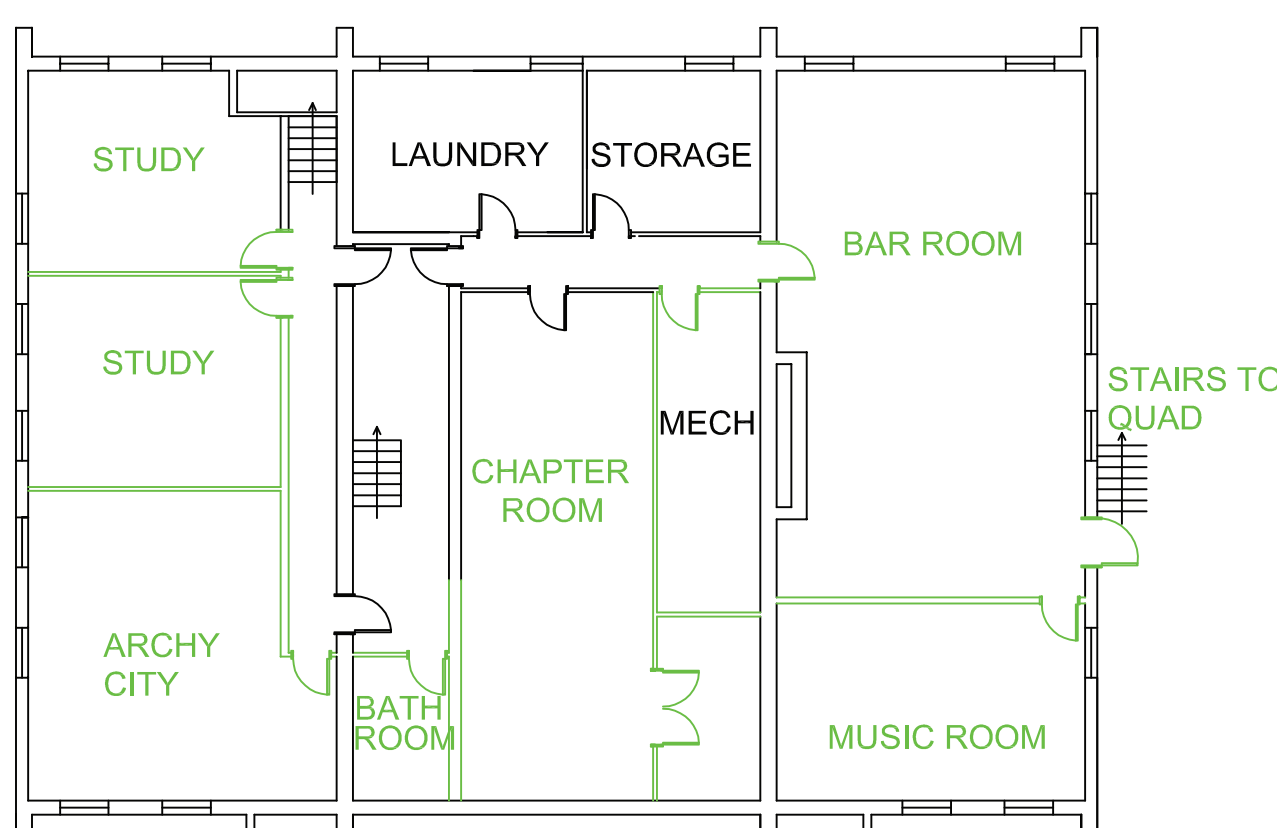
View of proposed second floor renovation with lounge



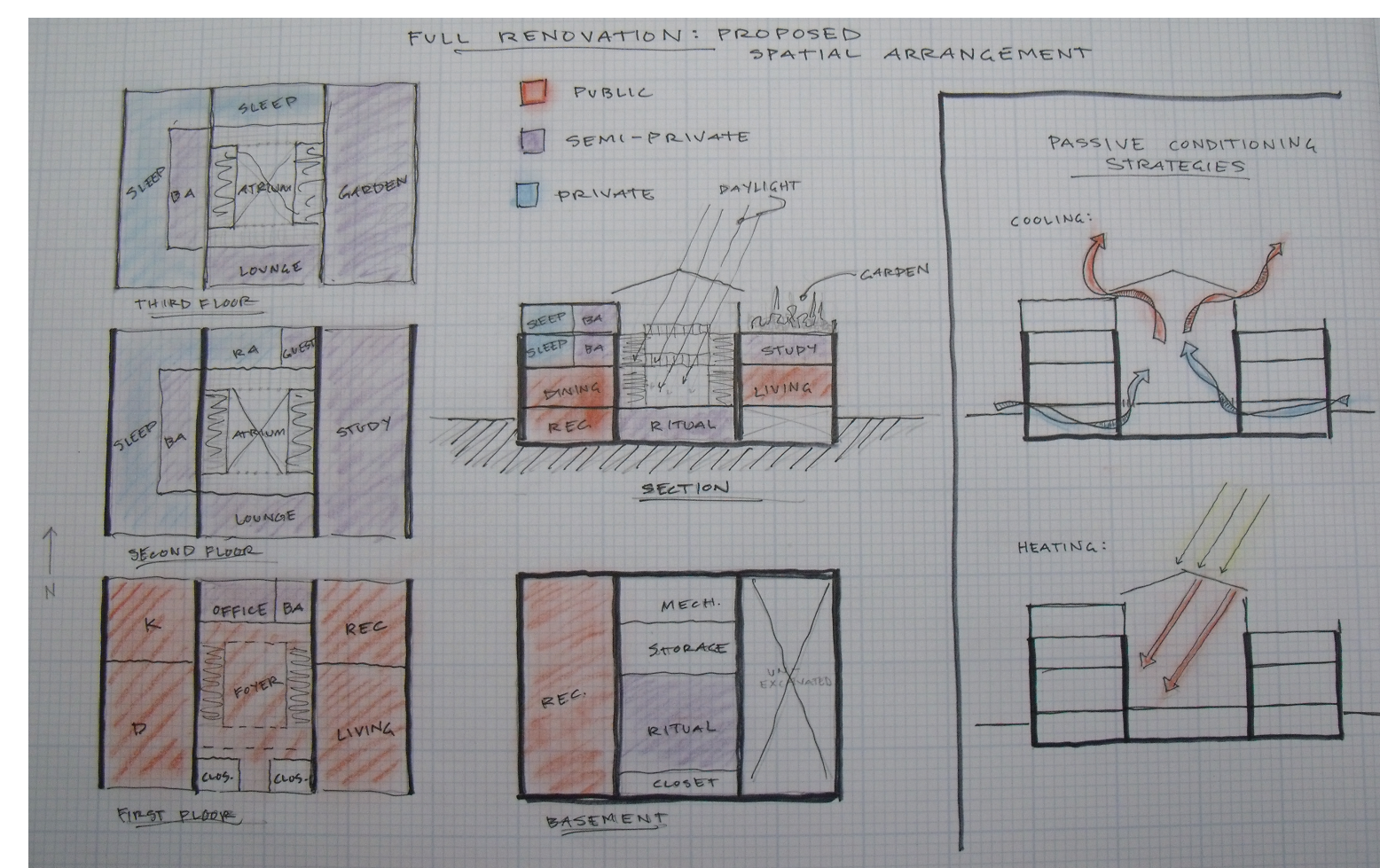
Basement



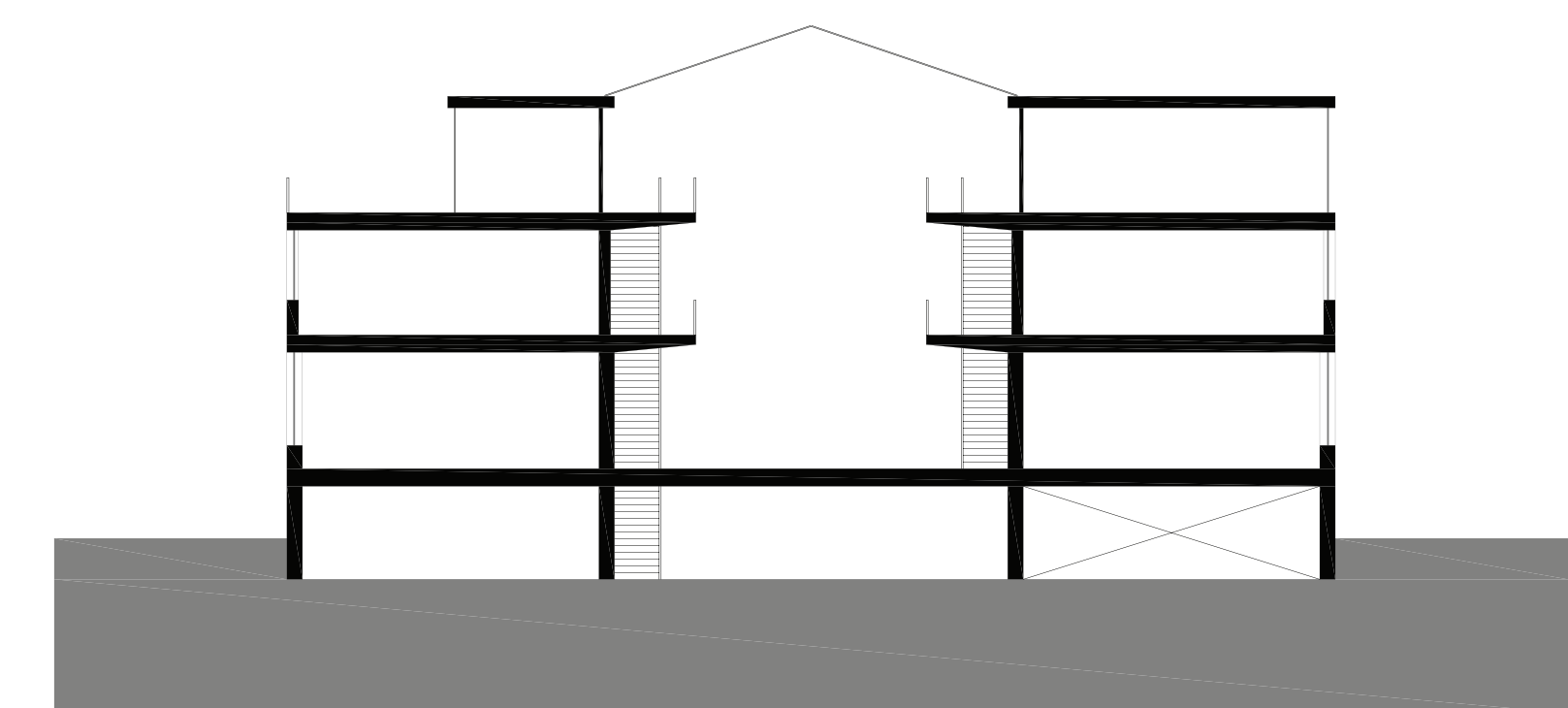
Second Floor



Basement



Original sketch proposal



Longitudinal Section  
Scale: 1/16"=1'-0"

Instructor:  
Nancy Hamill-Governale

Team Members:  
Joshua Bradley, Noah Cahan, Daniel Dobbin, Jacob Dohm,  
Jeffrey Hallenbeck, Kent Hoffman, Davyd Jordan,  
Woong-Kyo Lee, Brad Strandquist, Nathan Waisath

Illinois Institute of Technology  
IPRO 311  
Fall 2009