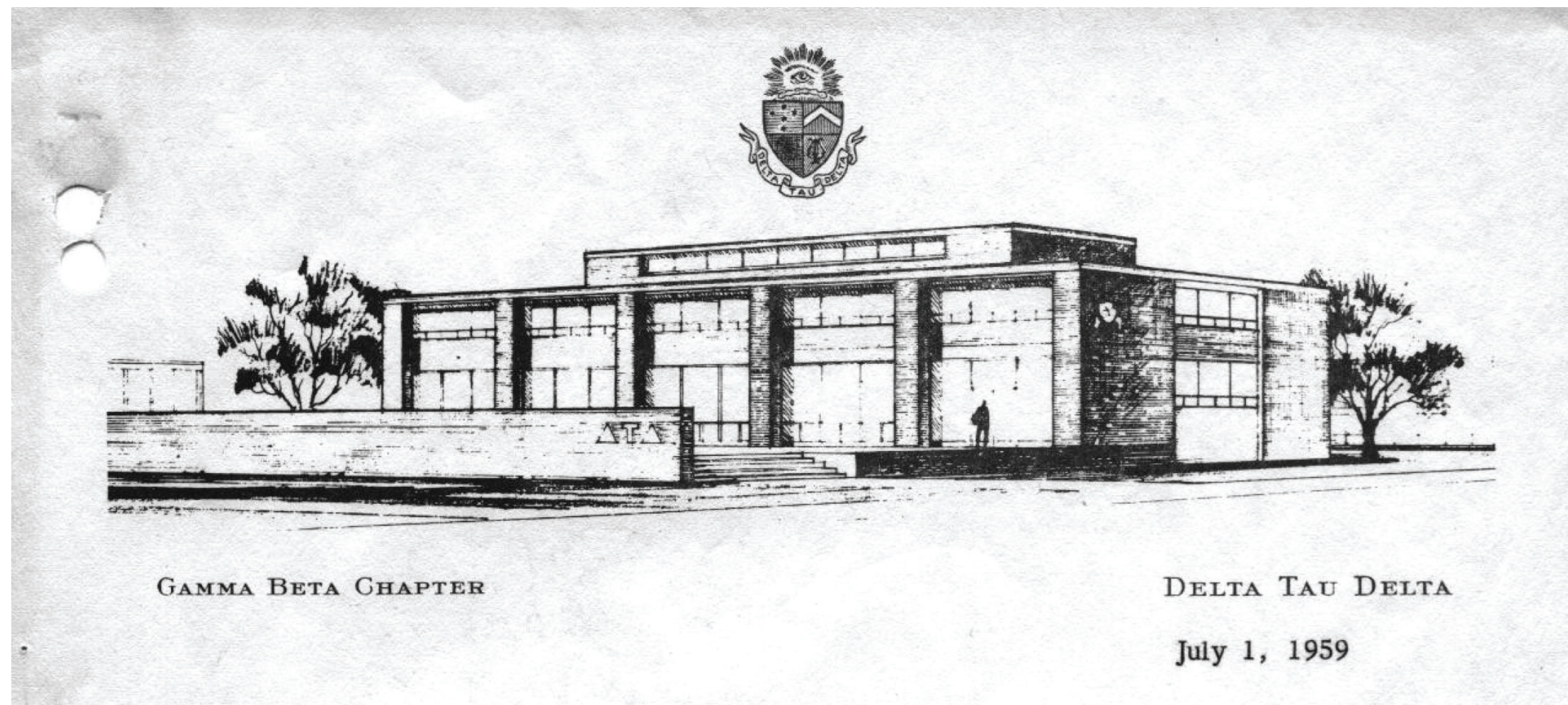


# THE SHELTER

## Chapter History at a Glance



Initial proposal rendering, 1959

-Gamma Beta chapter of Delta Tau Delta was founded in 1901

-After approximately 60 years of living among the surrounding city, fraternities began to move onto IIT's main campus

-The first bid for the shelter was in 1959

-Construction was completed in 1961

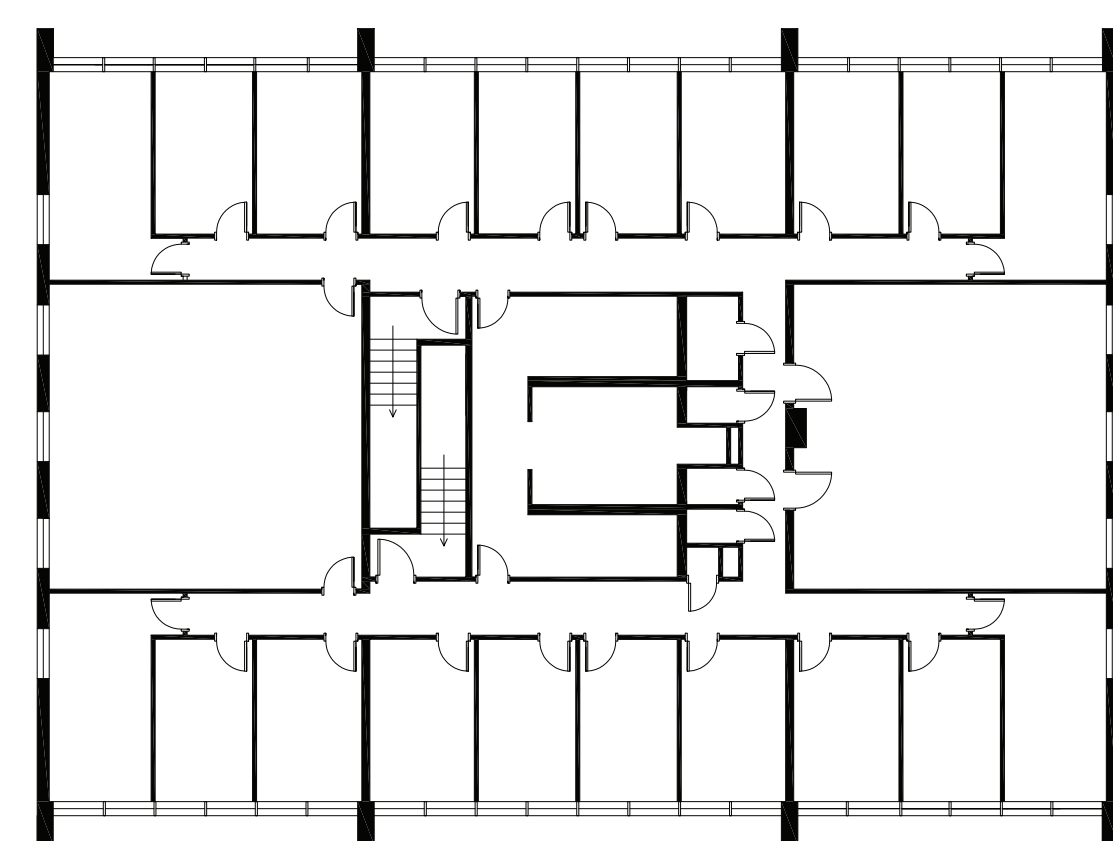
-Purely Modernist in nature, the building has four structural load-bearing brick walls which are clearly expressed on the exterior; the brick color matches fellow fraternity and sorority houses and the academic buildings on Mies's Main Campus

-As the shelter approaches 50 years of age, problems are surfacing; energy performance and the expectations of today's college students, particularly, must be addressed

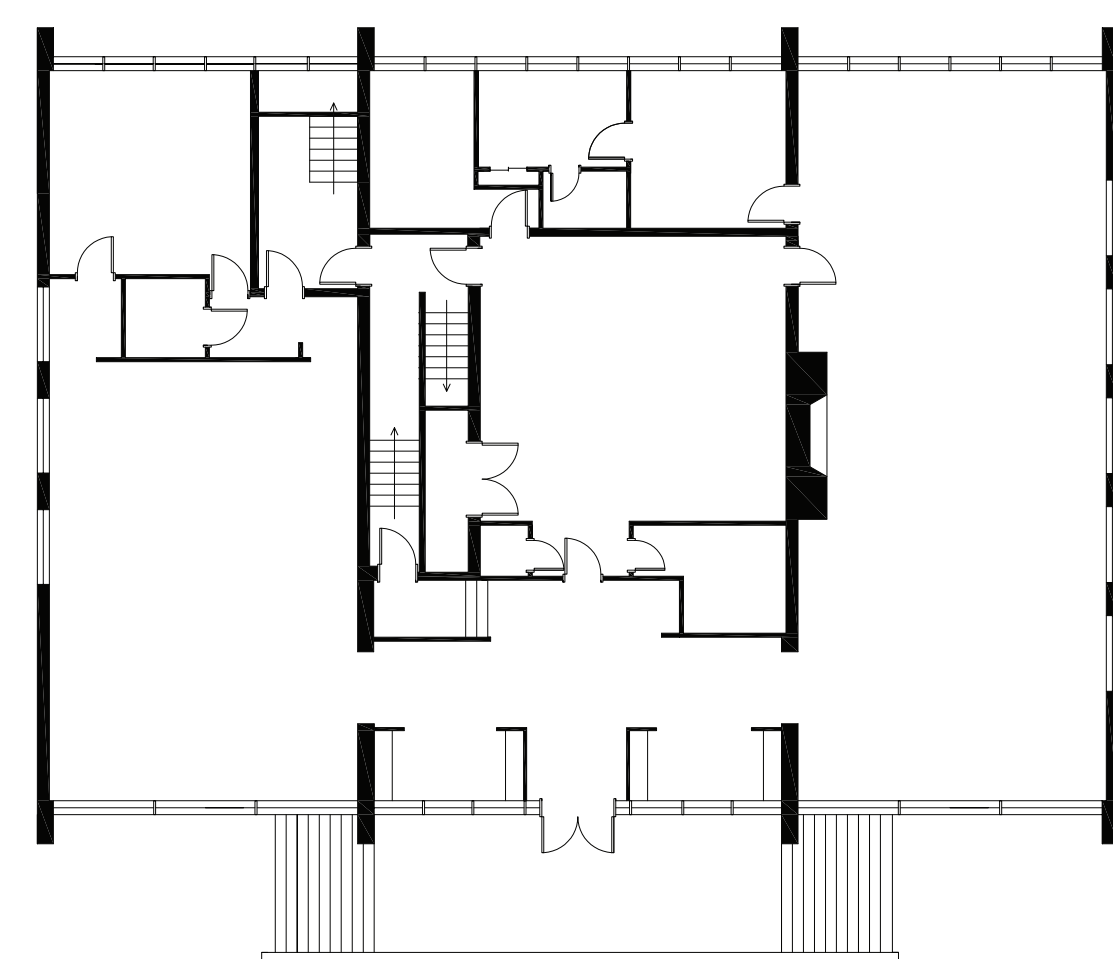


Delta Tau Delta, Gamma Beta shelter as it currently exists

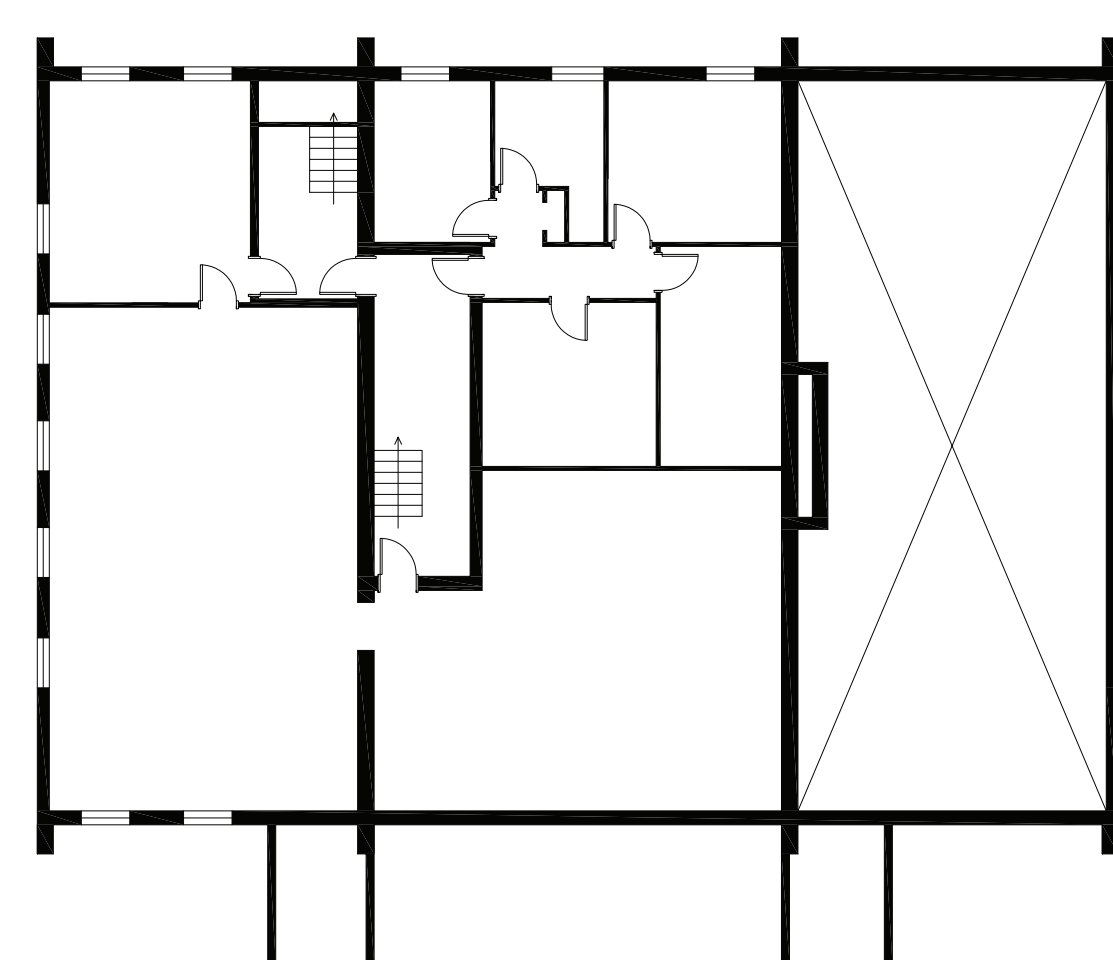
## Existing Architectural Plan



Second Floor  
Scale: 1/16"=1'-0"



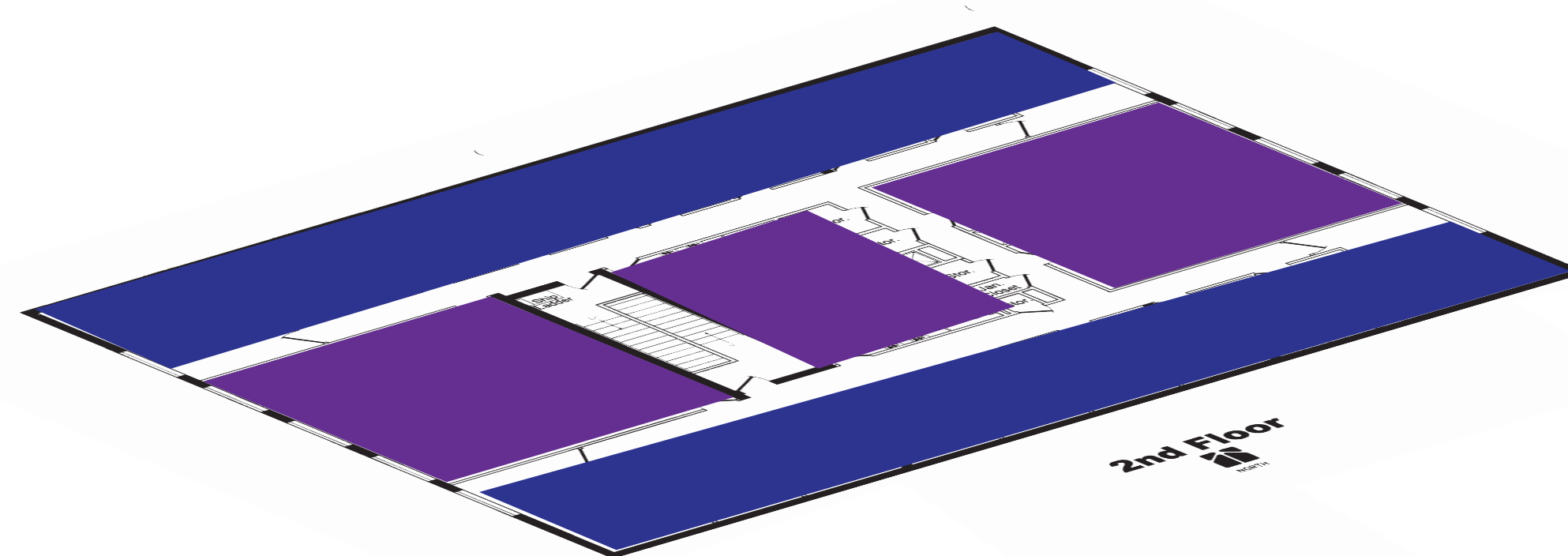
Ground Floor



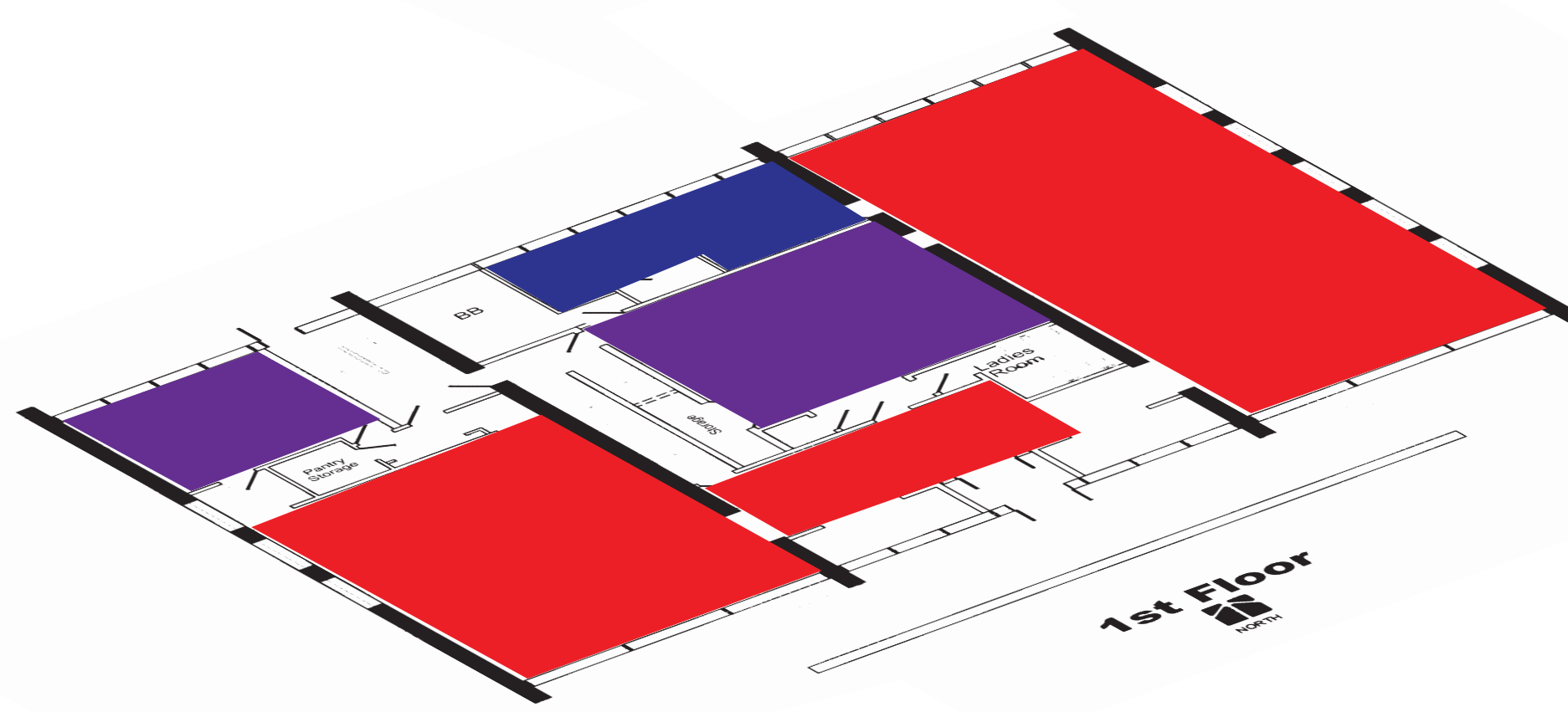
Basement

## Current Space Use

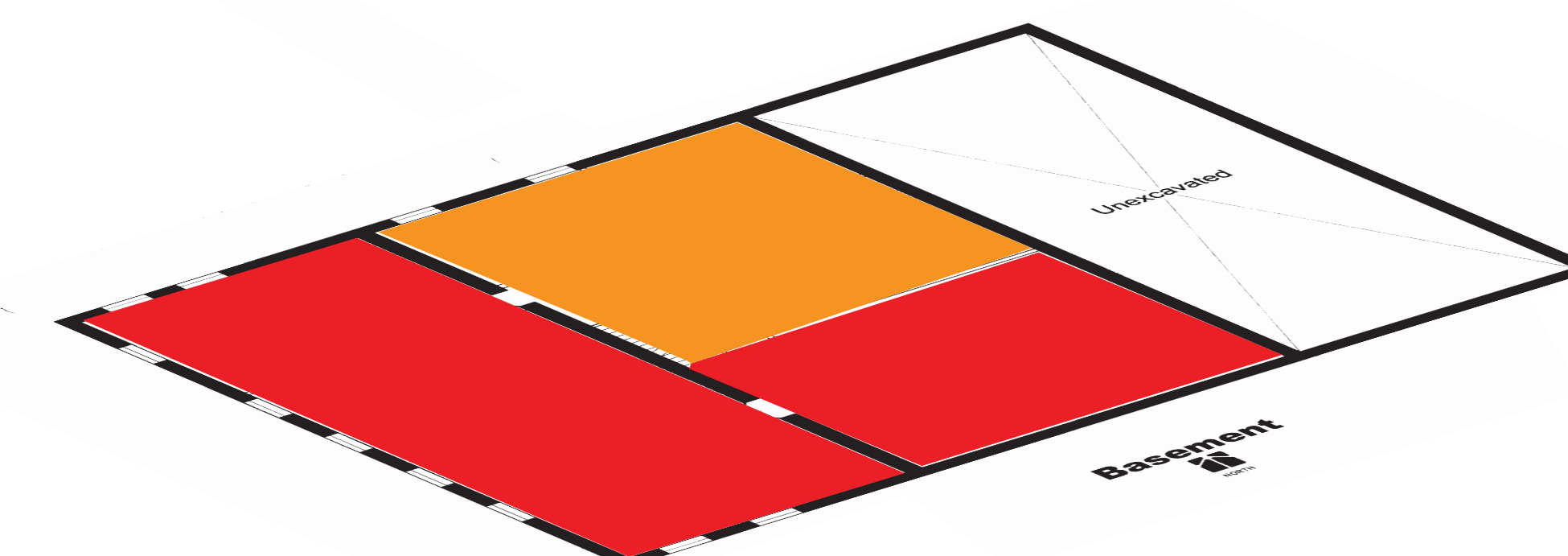
### Public and Private Spaces



2nd Floor



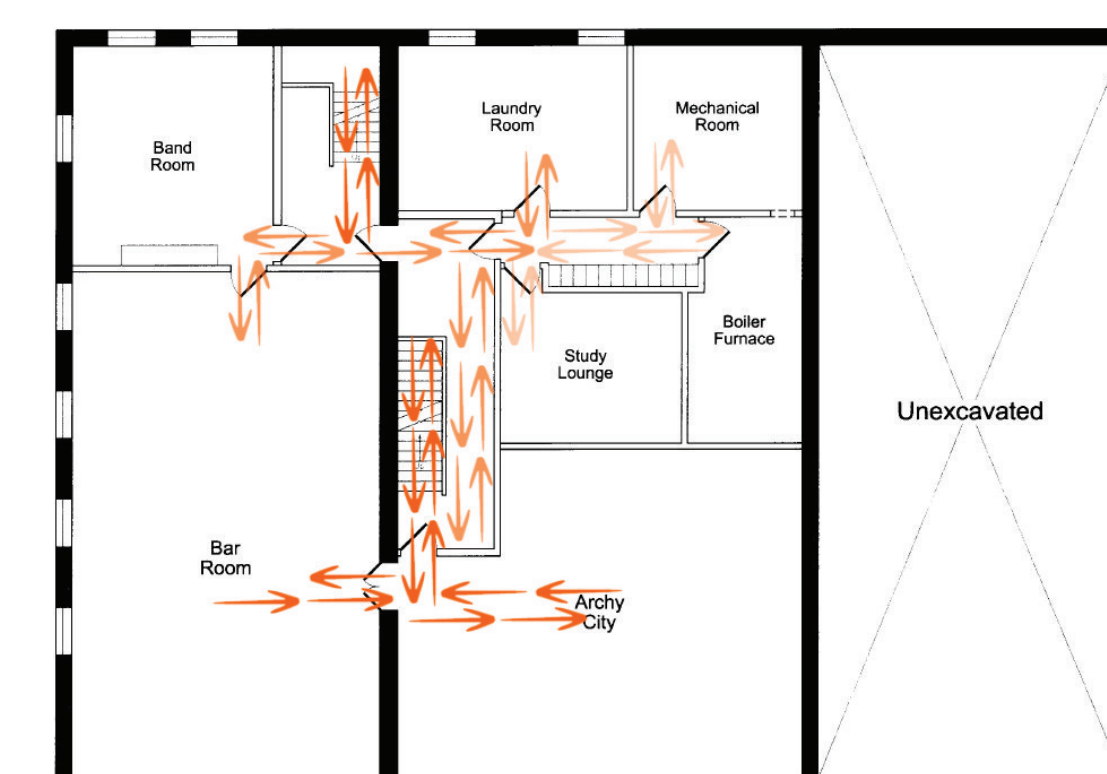
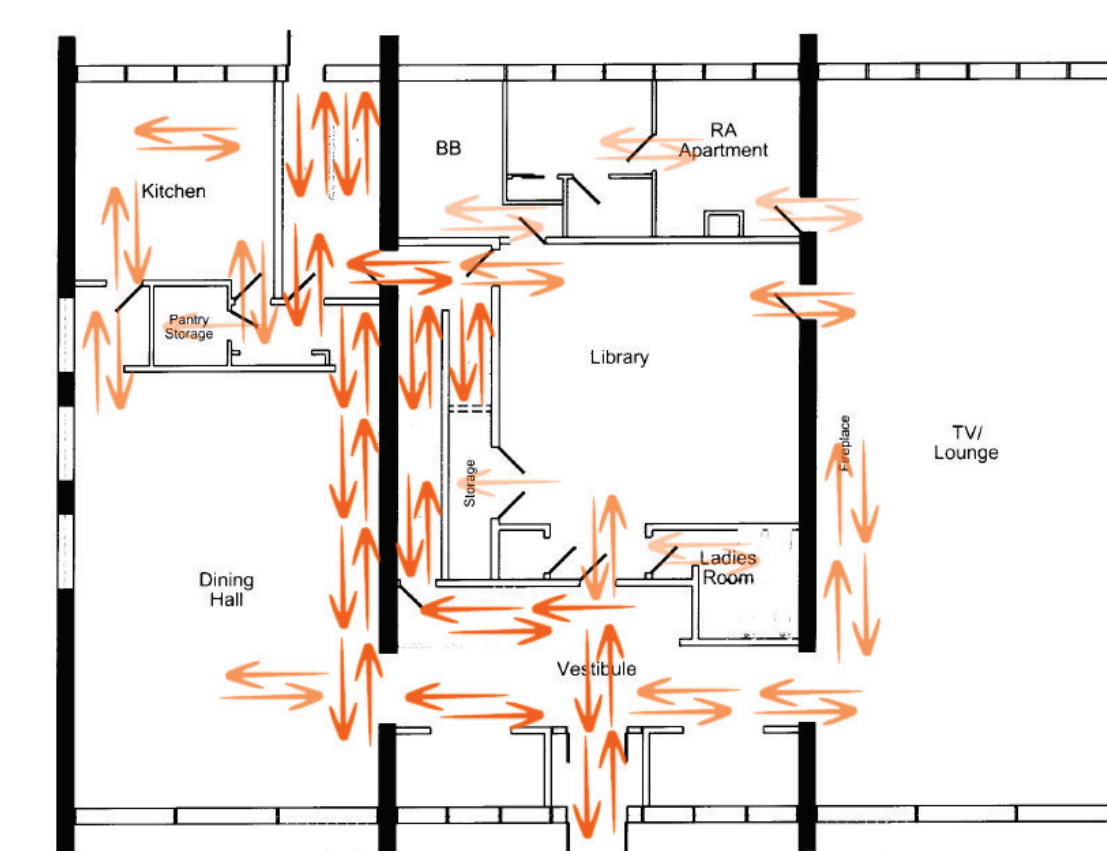
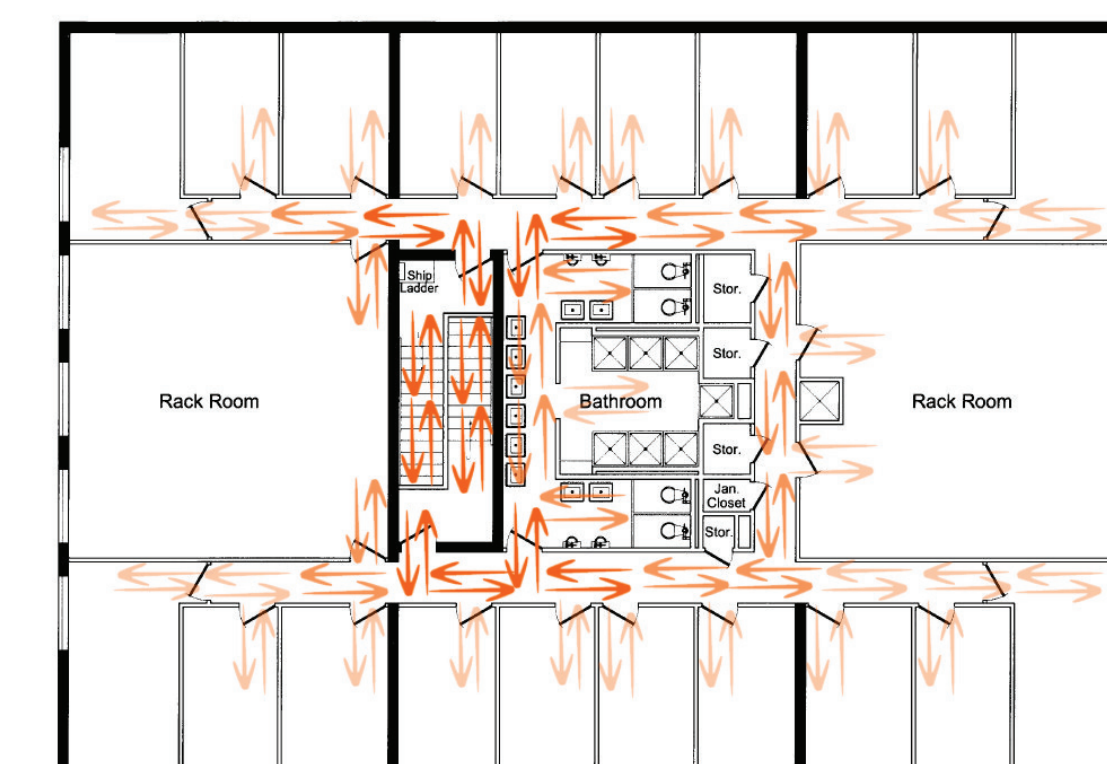
1st Floor



Basement

■ Private ■ Semi-Public ■ Public ■ Mech/Storage

### Circulation Patterns



Instructor:  
Nancy Hamill-Governale

Team Members:  
Joshua Bradley, Noah Cahan, Daniel Dobbin, Jacob Dohm,  
Jeffrey Hallenbeck, Kent Hoffman, Davyd Jordan,  
Woong-Kyo Lee, Brad Strandquist, Nathan Waisath

Illinois Institute of Technology  
IPRO 311  
Fall 2009