

COMPOSTING TOILET

Problem

Much of the world's population lives in rural and underdeveloped areas lacking adequate living conditions largely in part to scarce water supplies and safe and dependable toilets. Around 3.1m people died in 2002 as a result of diarrhoeal diseases and malaria which were contracted from polluted water, 90% of whom were children.



Objective

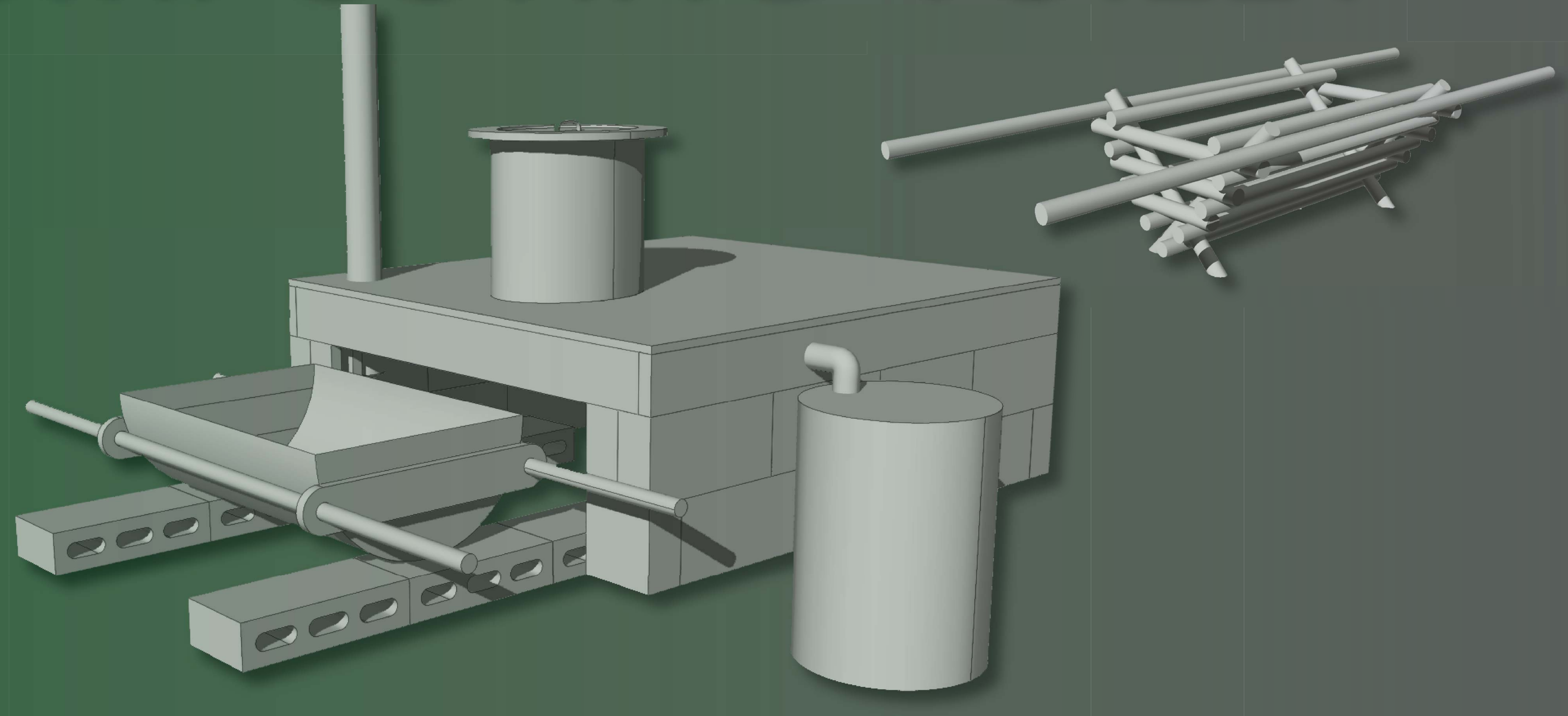
Design and build a prototype of a composting toilet that would help the world's rural poor through water conservation and protection against contamination by pathogens from urine and fecal matter, and provide a simple, affordable solution that can be easily fabricated by the target population.



IPRO 325

Affordable Solutions for the World's Poor

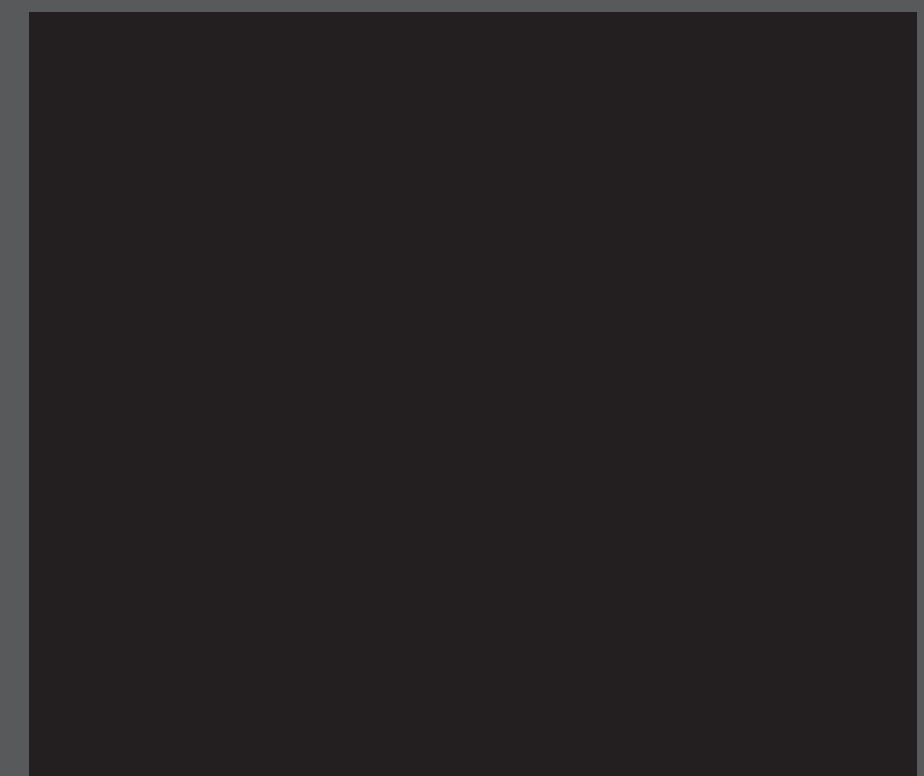
Prof. Daniel Ferguson
Prof. Ken Schug



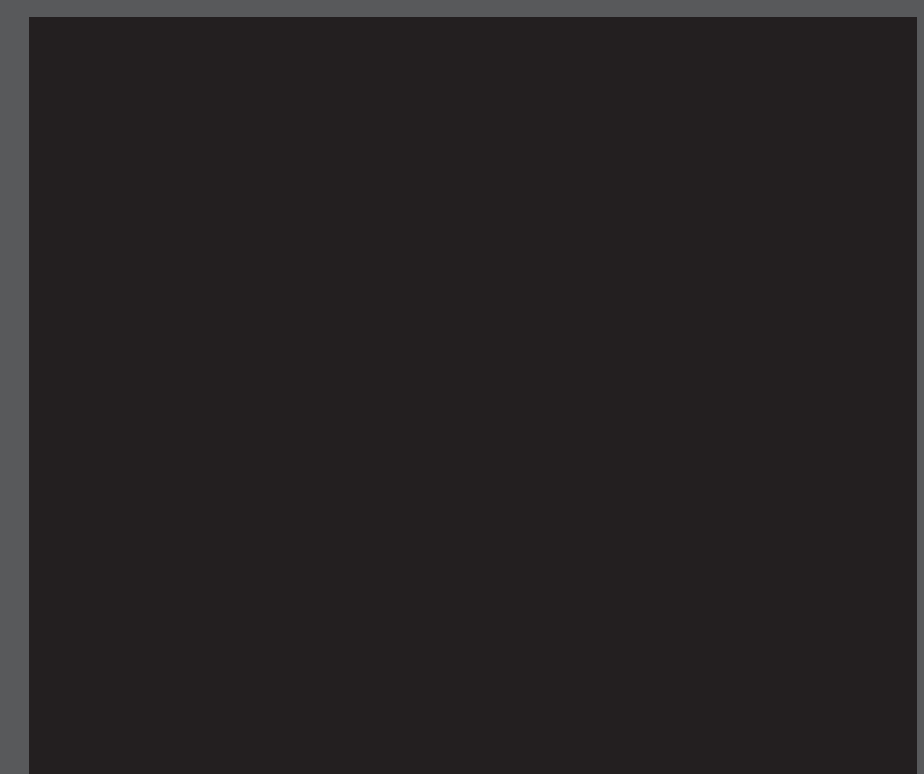
Team



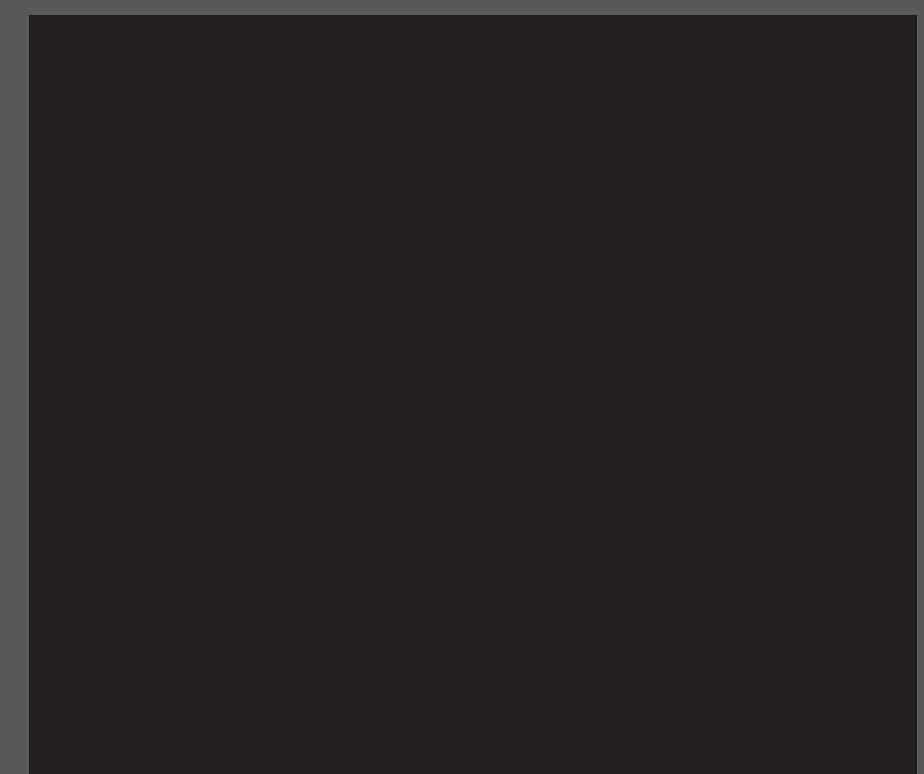
Write



Write



Write



Write



Write