



FABLAB

there is no limit

Problem

Lack of use of the Fabrication Laboratory (Fab Lab) at the Museum of Science and Industry (MSI)

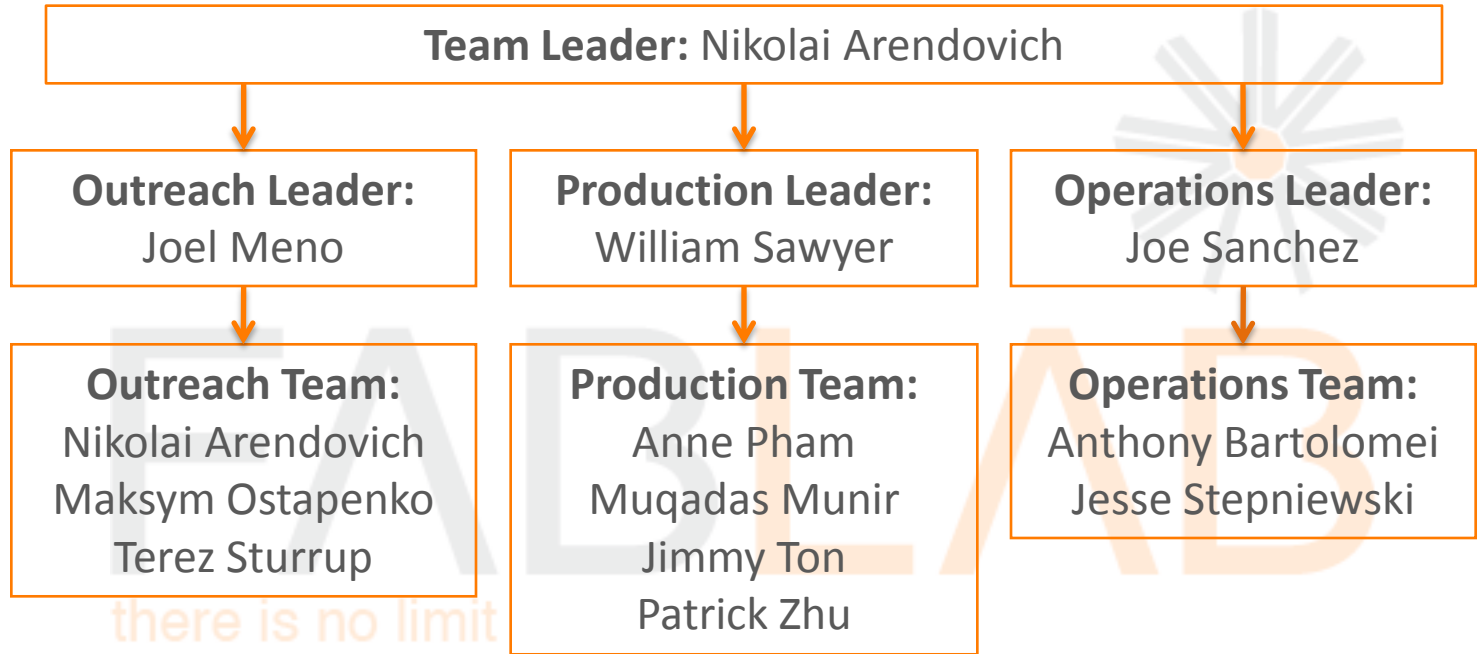


Goal

Raise public interest of the Fab Lab and begin development of a sustainable business model



Fab Team



Outreach: Goals



- Promote Fab Lab capabilities
- Hold trial exhibits for MSI patrons
- Website development
- Obtain interviews/testimonials with MSI patrons
- Organize workshops

there is no limit

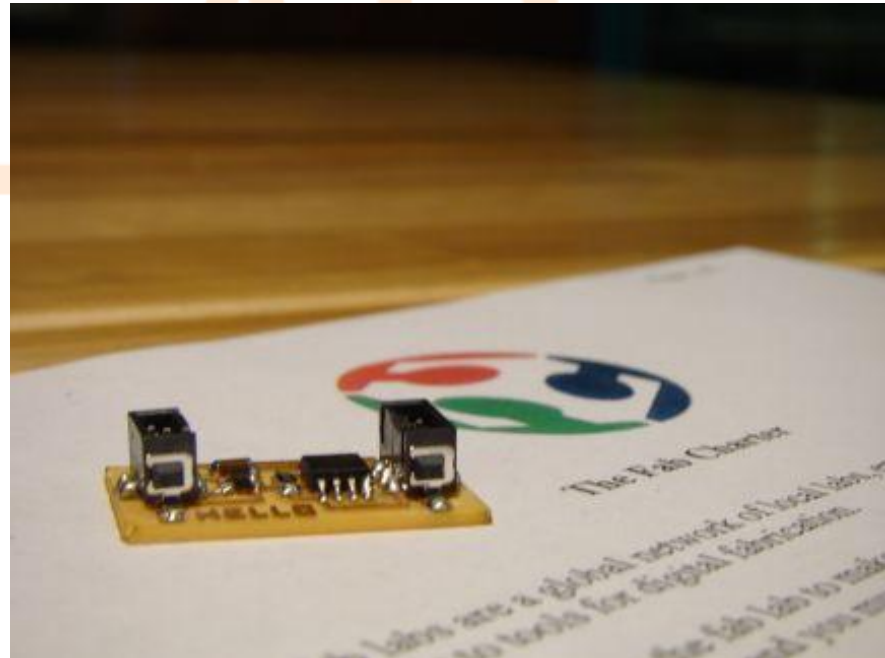


FAB LAB

Outreach: Progress



- Held meeting with Guest Programs department
- Planned focus groups
- Began work with Exhibit Development and Education departments
- Began development on a website
- Attended Engineer's Week



Production: Goals

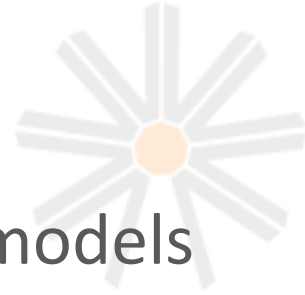


- Build high-resolution models using Fab Lab machines
- Show machines at work or video to demonstrate capabilities at IPRO day
- Provide other sub-teams with products to assist in presentations
- Refine machinery manuals

Production: Progress



- Learned operation of machinery
- Began designing high-resolution models



FAB
there is no limit



Operations: Goals



- Contact initial MSI Fab Lab investors
- Contact other Fab Labs
- Create marketing campaign
- Create a viable operations model

there is no limit



FABLAB

Operations: Progress




- Identified stakeholders
- Began contacting other Fab Labs
- Worked on revamping logo and slogan
- Began work on sustainable model

there is no limit



Obstacles Encountered

- Making contact with stakeholders
- Confirming MSI vision for the Fab Lab
- Lack of access due to rebranding of MSI



FABLAB
there is no limit

Anticipated Challenges

- Working without much direction from stakeholders
- Continued communication and access difficulties with MSI
- Machine maintenance



Questions?



FABLAB

there is no limit