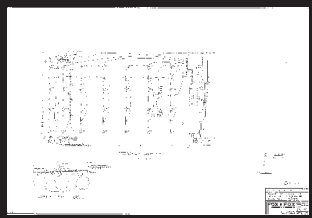
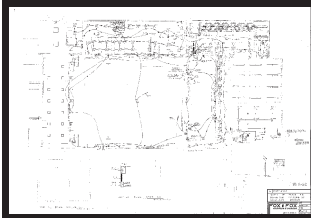
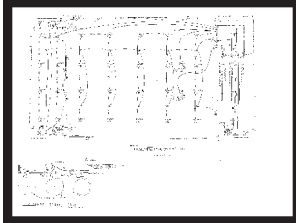


Lighting Replacement

BACKGROUND:

After meeting with the Queen of Peace representatives and visiting the campus, it was noted that the current lighting in the convent facilities and the gymnasium was out of date and costly to operate. An full assessment of the current fixtures and lamps in the convent and gymnasiums was performed and subsequently a cost versus benefit analysis was executed to determine the utilities saving potential for the school.

Members: Meghan Murdock-Barribal



SUMMARY

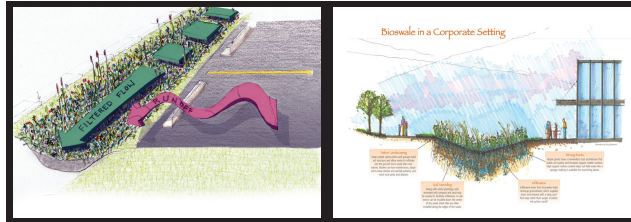
Lighting Cost Per Year Before Retrofit	\$17,731.48
Lighting Cost Per Year After Retrofit	\$6,333.68
Lighting Savings Per Year	\$11,397.79
Kilowatt Demand Savings	35 kW
Kilowatt Hour Usage Before Retrofit	139,398 kWh
Kilowatt Hour Usage After Retrofit	49,793 kWh
Kilowatt Hour Per Year Savings	89,605 kWh
Number of Fixtures	280
Estimated Project Cost	\$49,616.40
Com Ed Incentive	\$9,147.00
Net Project Cost	\$40,469.40
Carbon Dioxide Emission Reduction	201,612 lbs./year
SIMPLE PAYBACK	3.55 Years
Return on Investment- 1 year	28.16%
Return on Investment- 5 years	140.82%

Roof Re-Design

BACKGROUND:

Heating and cooling loads of the roof are dramatically insufficient for today's standards. Beyond roof, other possibilities are being brought to attention: including wind power, solar and water collection systems.

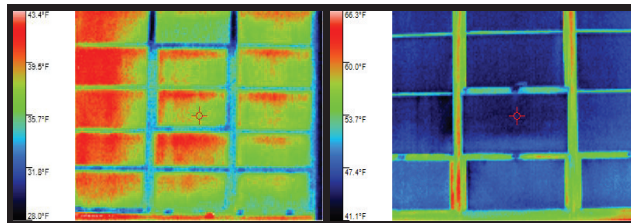
Members: Sana Ihmoud, Erin Pederson, Kaumil Shah



Roof Re-Design

BACKGROUND:

Current window equipment (original to facility) is out of date and taxing the heating equipment. A full assessment of conditions was performed to determine the utilities saving potent.



SPECIAL THANKS:

- Interprofessional Program and all employees affiliated
- Queen of Peace High School's students and faculty

GREENING AND RE-USE OF QUEEN OF PEACE HIGH SCHOOL FACILITIES



Team Members

Rawan Abbasi
Kyle Dralle
Ryan Dudek
Sana Ihmoud
Meghan Murdock-Barribal
Erin Pederson
Sarah Pfeifer
James Rossi
Nicholas Sahn
Kaumil Shah
Mimi Wide

Faculty Advisors

Mr. Jim Braband
Mrs. Nancy Hamill