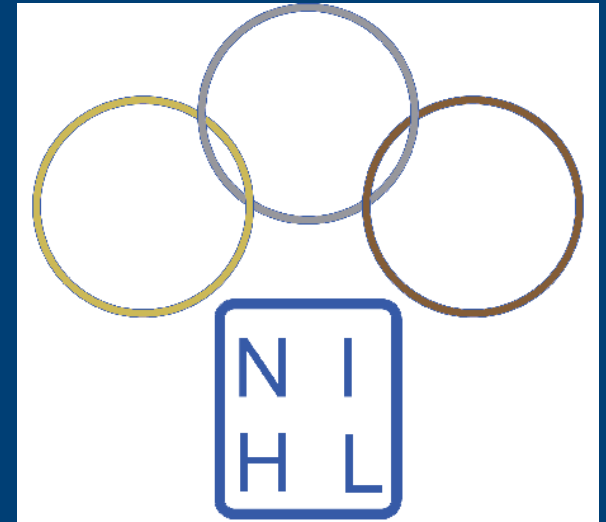


IPRO 308



**Web Applications for
the Northern IL Hockey League**



NIHL



The Northern Illinois Hockey League is the largest youth hockey league in Illinois, serving over 300 youth teams and over 4,000 players

Problem

NIHL PROBLEMS

- 3,500 games are played each season with a hand scheduled matchmaking system
- Their score reporting system requires over 200 team managers to fax completed game reports to a outsourced league statistician
- An elaborate manual process for the various hockey divisions to establish their schedules and locations for the seeding round games every year

TEAM STRUCTURE

Documentation and Testing

- Christopher Savage
- Kristin Lucchesi
- Kryzstof Bartus
- Colin Scheer

Coding Team

- Vladimir Semenov
- William Perkins
- Julian Hays
- Dustin Barksdale
- Mantas Vidutis

OBJECTIVES

- Research NIHL's current scheduling and scoring process
- Develop web-based scheduling and scoring applications that can support its annual operations
- Test and debug the web-based applications
- Integrate our application onto their existing site
- Create a user manual for the users of our applications

PROJECT APPROACH

Phase I: Research & Design

- Study and evaluate NIHL's current scheduling and matchmaking process
- Create the site map and logic algorithms for our applications

Phase II: Development

- Code the application as well as make the user manual and help sections

Phase III: Testing & Refinement

- Input data and test algorithms of the application.
- Perform debugging

SOFTWARE DEVELOPMENT PROCESS

RESEARCH

➤ We personally observed NIHL's current matchmaking process



NORTHERN ILLINOIS HOCKEY LEAGUE OFFICIAL SCORE SHEET (PLEASE PRINT CLEARLY) DATE / /

REFEREE(LINSMAN (PRINT)) LEVEL: _____ ICHA NO. _____ DIVISION: A2 MT SO PW BA MG

HOME TEAM REFEREE(LINSMAN (PRINT)) LEVEL: _____ ICHA NO. _____ LEVEL: ELITE GOLD SILVER BRONZE

VISITING TEAM LINSMAN (PRINT) LEVEL: _____ ICHA NO. _____ TIER: 1 2 3 4

NO.	HOME	NO.	VISITOR	GOAL #	PERIOD	TIME	TEAM	SCORER	ASSIST
1									
2									
3									
4									
5									
6									
7									
8									
9									
10									
11									
12									
13									
14									
15									
16									
17									

GAME SUSPENSIONS BEING SERVED BY:

TEAM	PLAYER'S LAST NAME	GAME #

PENALTIES

PER. PLAYER	TEAM	MINS.	OFFENSE	OFF	ON

SCORING

HOME	1st	2nd	3rd	OT	TOTAL

1st GOALKEEPER SAVES

HOME	No.	PER	1st	2nd	OT	TOTAL

2nd GOALKEEPER SAVES

HOME	No.	PER	1st	2nd	OT	TOTAL

OFFICIAL: _____
 OFFICIAL: _____
 OFFICIAL: _____

HOME COACH: _____ C.S.P. _____
 C.S.P. NUMBER: _____ LEVEL: _____

PHONE: () _____

VISITING COACH: _____ C.S.P. _____
 C.S.P. NUMBER: _____ LEVEL: _____

PHONE: () _____

Were there any Major, Game Misconduct, or Match Penalties Assessed? Yes _____ No _____

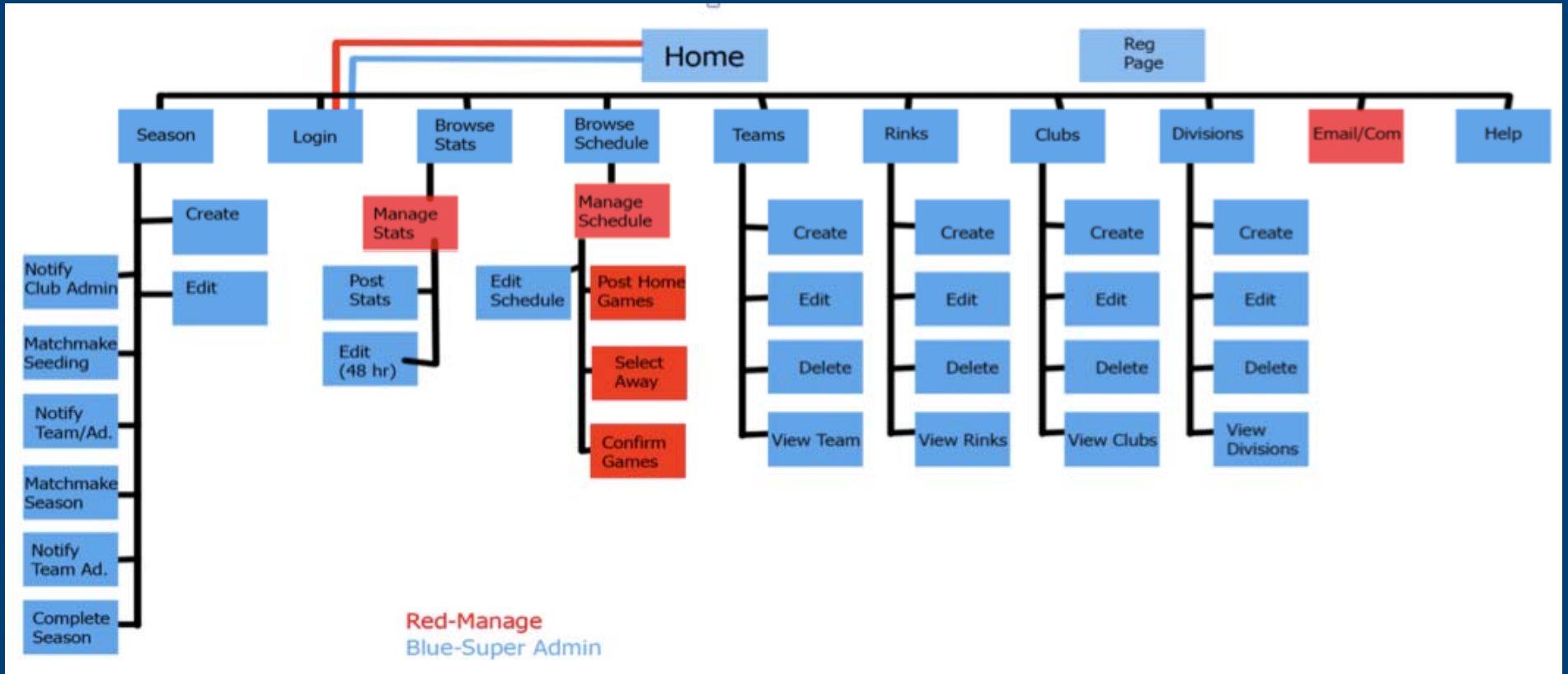
SCORES (Please Print) _____
 Fax Scoresheet within 72 Hours of NHL Game to FAX # (847) 304-8583

WHITE --- HOME TEAM/FAX CANARY --- VISITING TEAM PINK --- REFEREEES

©Copyright Northern Illinois Hockey League 2008

➤ We also analyzed NIHL's current statistics forms and regulations

DESIGN



MATCHMAKING ALGORITHM

- Analyzes team listings and generates matches automatically

Seeding Matchups (2009 Season)

Home Team	Away Team	Status
[Mite Elite] Falcons #1	[Bantams Elite] Vikings #1	Away team has not picked a date yet.
[Mite Elite] Falcons #1	[Peewees Silver T2] Bruins #2	Away team has not picked a date yet.
[Mite Elite] Falcons #1	[Squirts Silver T2] Jets #2	Away team has not picked a date yet.
[Mite Elite] Falcons #1	[Mite Silver T2] Wilmette #3	Away team has not picked a date yet.
[Mite Elite] Falcons #1	[Mite Elite] Express #1	Confirmed for 12/25/2009 06:15 PM at Cahokia Ice Rink.
[Mite Elite] Falcons #1	[Mite Silver T1] Bruins #1	Away team has not picked a date yet.
[Mite Elite] Falcons #1	[Mite Elite] Express #1	Away team has not picked a date yet.
[Mite Elite] Falcons #1	[Mite Silver T1] Bruins #1	Away team has not picked a date yet.
[Mite Elite] Falcons #1	[Mite Silver T2] Wilmette #3	Away team has not picked a date yet.
[Mite Elite] Falcons #1	[Peewees Silver T2] Bruins #2	Away team has not picked a date yet.
[Mite Elite] Falcons #1	[Bantams Elite] Vikings #1	Away team has not picked a date yet.
[Mite Elite] Falcons #1	[Squirts Silver T2] Jets #2	Away team has not picked a date yet.
[Mite Silver T1] Vikings #2	[Mite Elite] Falcons #1	Waiting for home rink schedule.
[Mite Silver T1] Vikings #2	[Mite Elite] Falcons #1	Waiting for home rink schedule.
[Mite Silver T2] Blues #2	[Mite Elite] Falcons #1	Waiting for home rink schedule.
[Mite Silver T2] Blues #2	[Mite Elite] Falcons #1	Waiting for home rink schedule.

STATISTICS

- Allows team managers to update statistics via a web browser

Division
- Any Division -
Mite
Squirts
Peewees

Skill Level
- Any Skill Level -
Bronze T1
Silver T1
Silver T2

Club
- Any Club -
Falcons Hockey Club
Chicago Blues Hockey
Sabres Hockey

Team
- Any Team -
Falcons #1
Blues #1
Sabres #1

Hold down "Ctrl" to select multiple items

Apply Filter Clear Filter

Team Statistics

Team	Level	Division	GP	Wins	Losses	Ties	PTS	GF	GA	+/-	SOG	TPM	GFA	AVG
Falcons #1	Elite	Mite	0	0	0	0	0	0	0	0	0	0.0	0.0	0.0
Blues #1	Elite	Mite	0	0	0	0	0	0	0	0	0	0.0	0.0	0.0
Sabres #1	Elite	Mite	0	0	0	0	0	0	0	0	0	0.0	0.0	0.0
Huskies #1	Elite	Mite	0	0	0	0	0	0	0	0	0	0.0	0.0	0.0
Glenview #1	Elite	Mite	0	0	0	0	0	0	0	0	0	0.0	0.0	0.0
Wilmette #1	Elite	Mite	0	0	0	0	0	0	0	0	0	0.0	0.0	0.0
Ice Dogs #1	Elite	Mite	0	0	0	0	0	0	0	0	0	0.0	0.0	0.0

TESTING & REFINEMENT

- Created test cases to cover all possible scenarios
- Executed test cases against final application version
- Re-executed test cases until all bugs have been eliminated

OBSTACLES

- Difficulties acquiring test data from NIH
- Getting all the separate parts of the application to work together
- Making the interface intuitive and user friendly
- Not everyone had experience with development environment we used

ETHICAL CONSIDERATIONS

- Focused on developing the application specifically for NIHL and not a general sports league
- Ensured that none of the code, images or templates we used were copyrighted
- Made a secure system that can not be infiltrated
- Privacy concerns for all the children and adults associated with the NIHL

NEXT PHASE

- User acceptance testing
- Deployment to Production Environment

SITE DEMONSTRATION

- Example of scheduling a game and entering statistics

QUESTIONS?