

IPRO 333

Fabrication Laboratory

Sponsor: Museum of Science and Industry
Instructors: Dr. Gatchell and Professor Davis

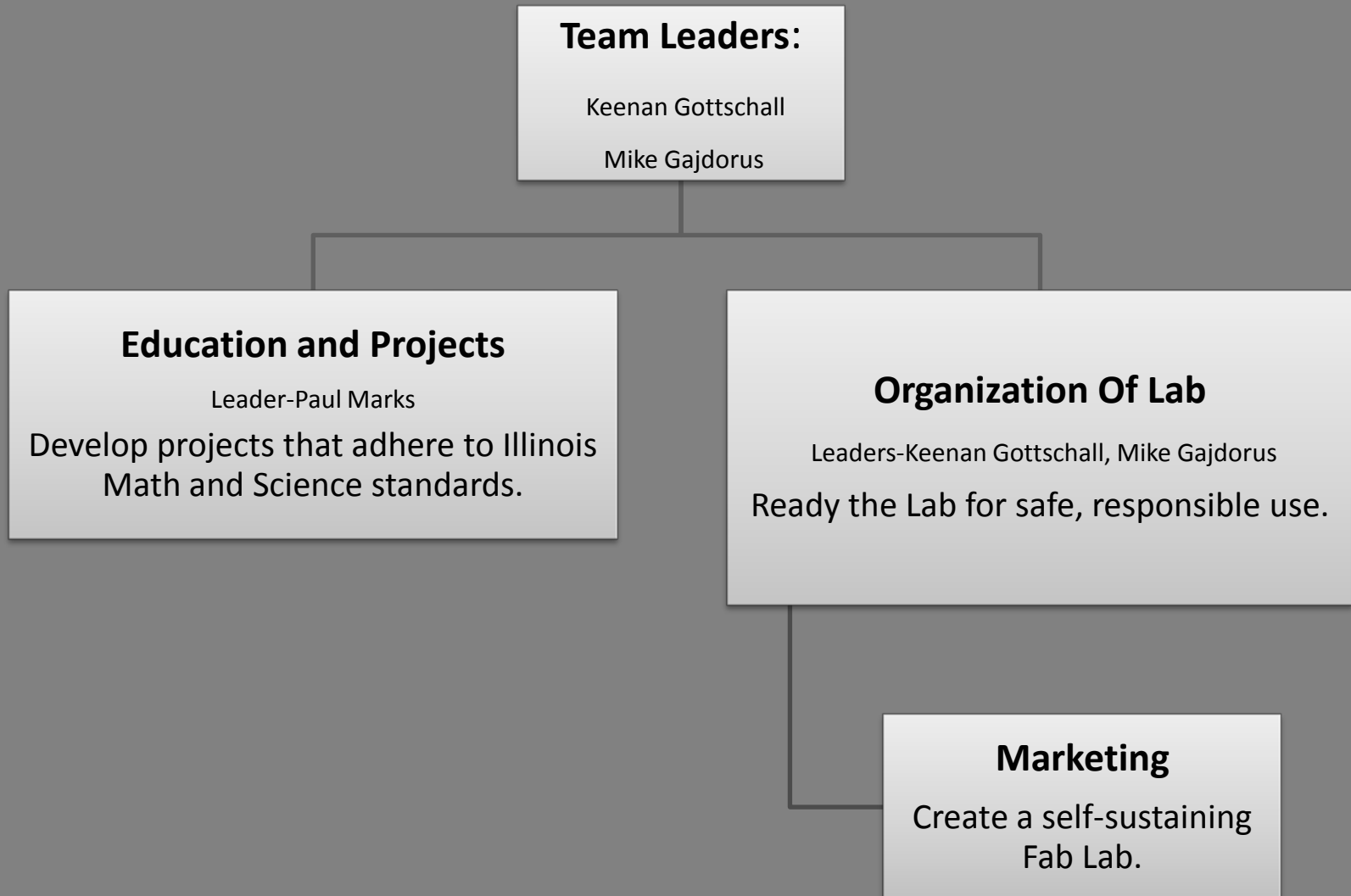


Statement of Problem

- Develop Projects for Specific User Groups
- Organize and Prepare Lab for Users



Organization of Teams



Goals of the IPRO

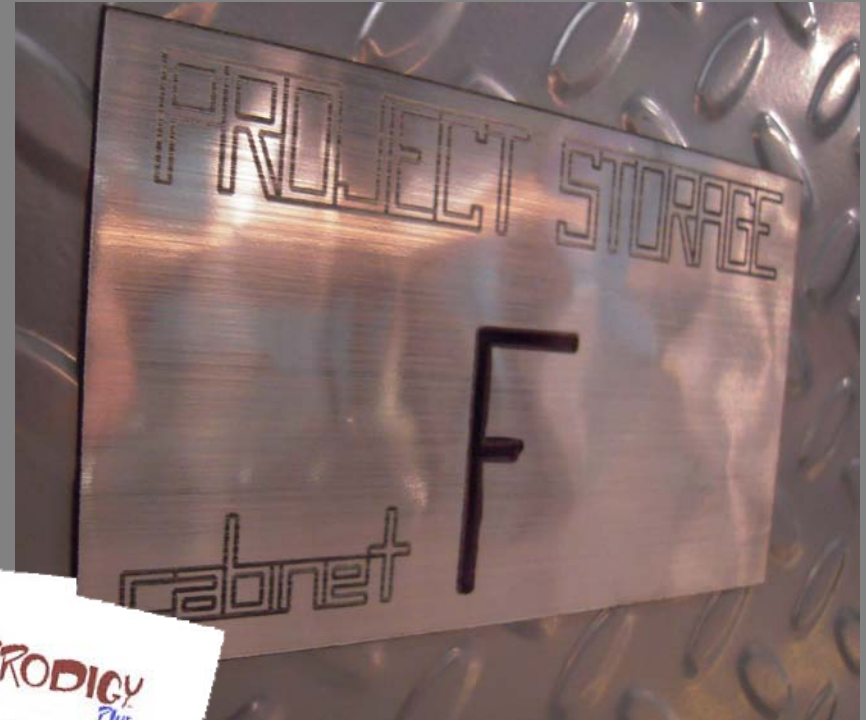


- Organization and Labeling of the Lab
- Get All Equipment Running
- Posting of Safety and Cleanliness Rules
- Development of User-Friendly Tutorials
- Project Development for Users



Progress

- Lab Inventoried, Organized and Labeled
- User Manuals Displayed



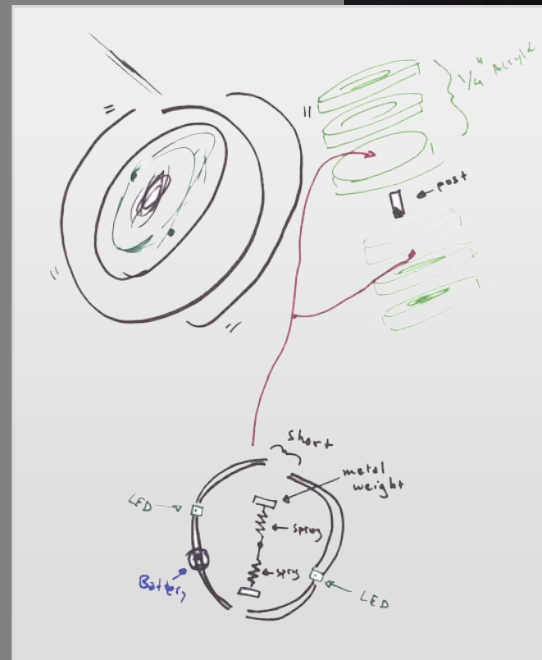
Progress

- Safety Items/Instructions Posted
- Marketing:
 - Identified target market; Associations, Organizations, and Artists
 - Created letter template for contacts
 - Created Fab Lab brochure



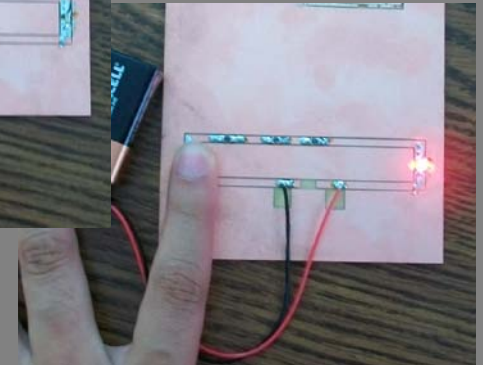
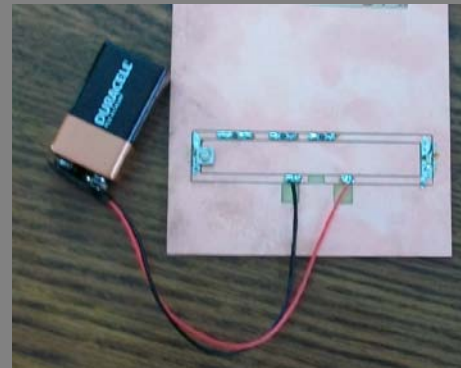
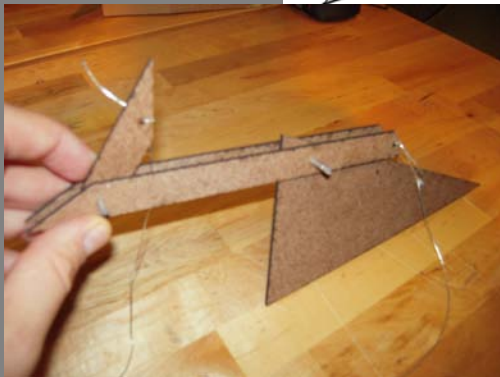
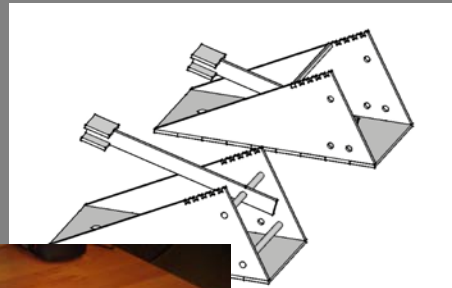
Project Progress

- Late Elementary Project-Home Planetarium
- Middle School Project-YoYo



Project Progress

- Junior High School Project-Origin of Pi
- High School Projects
 - Circuits
 - Catapult



Obstacles

- Maintenance of Equipment
- Lack of Present Staff
- Broken Communication with Museum
- Lack of Equipment Knowledge



Anticipated Challenges



- Proactive Involvement with MSI
- Lack of Funding
- Project Development
- Implementation of User Programs
- Documentation for future IPRO 333 Groups



Questions?



Dream **IIT**, Design **IIT**, Build **IIT**
MSI-entists