



# IPRO 333: Fab Lab

---

---

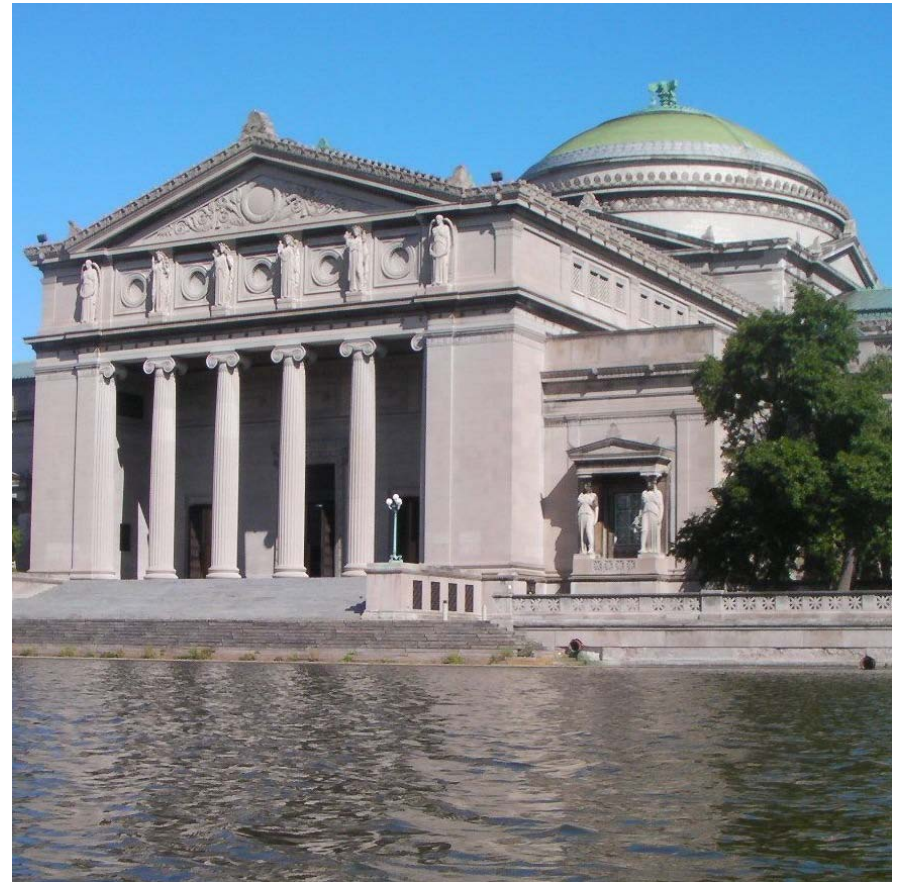
Dream IIT, Design IIT, Fabricate IIT

Presenters:  
Keenan Gottschall  
Rachel Hendricks  
Jered Linares



# Purpose

Partnership between IIT and Museum of Science of Industry (MSI) to develop and promote the Fabrication Laboratory (Fab Lab)







# What is a Fab Lab?

---

---

An open access workshop that houses digital fabrication equipment for rapid prototyping





# Problem Statement



The Fab Lab at MSI is under-developed and under-utilized



# Objectives

---

---

- Organization
  - Prepare Fab Lab for future use
- Projects
  - Develop projects that adhere to Illinois Math and Science standards
- Marketing
  - Publicize the Fab Lab to the community



# MSI-entists

## **IPRO 333: MSI-entists**

Team Leaders:  
Keenan Gottschall & Michael Gajdorus

### **Projects**

Develop projects that adhere to Illinois Math and Science standards.

Howard Clark  
Jered Linares  
Paul Marks  
Jeremy Young  
Raymond Zhou

### **Organization**

Ready the lab for safe, responsible use.

Andrew Bonesz  
Carlie Douglas  
Michael Gajdorus  
Keenan Gottschall  
Rachel Hendricks  
Clayton Kimball  
James Mellom  
Carl Stelcel

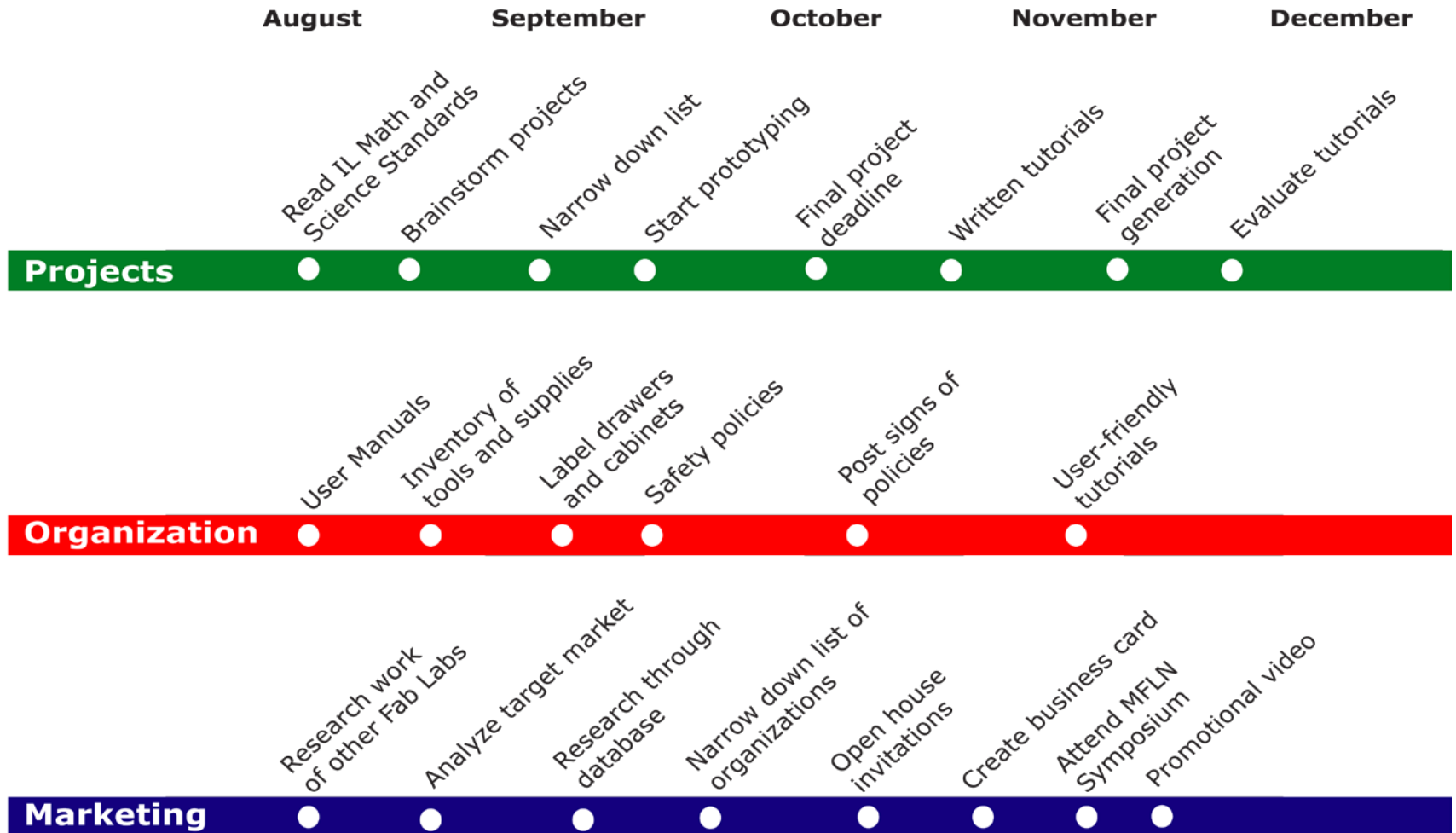
### **Marketing**

Create a self-sustaining Fab Lab.

Andrew Bonesz  
Keenan Gottschall  
Cindy Oblenida  
Sabina Pop



# Timeline

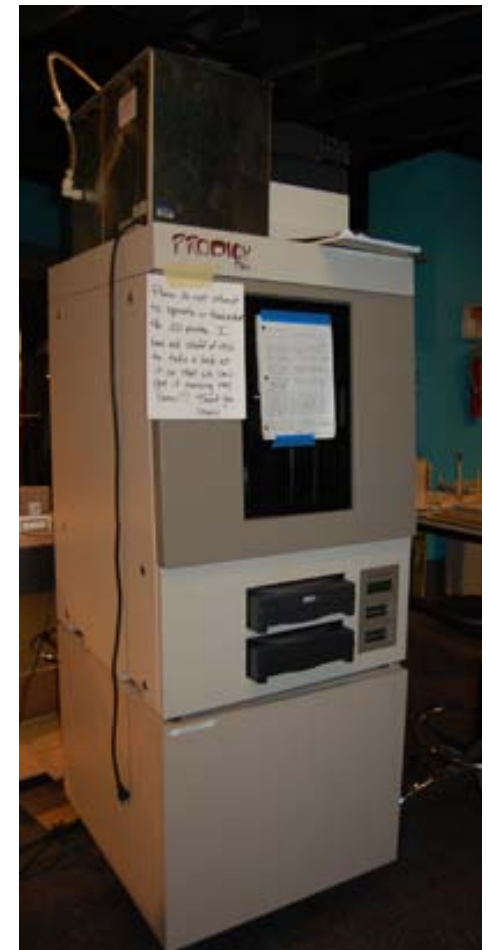
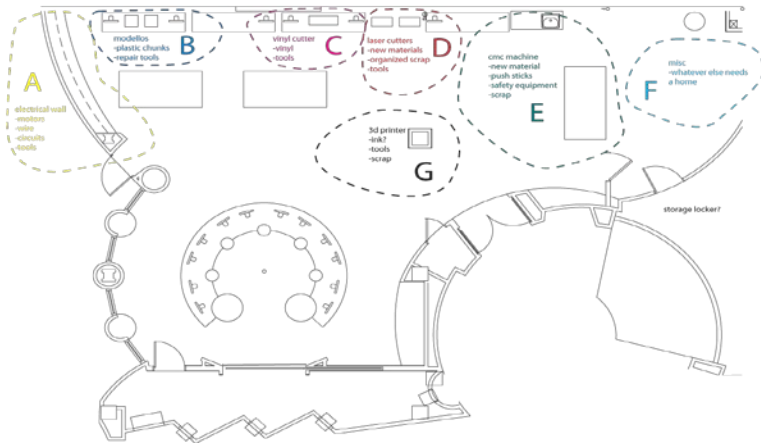






# Organization

- User manuals/tutorials
- Inventory
- Labels
- Safety policies
- Equipment

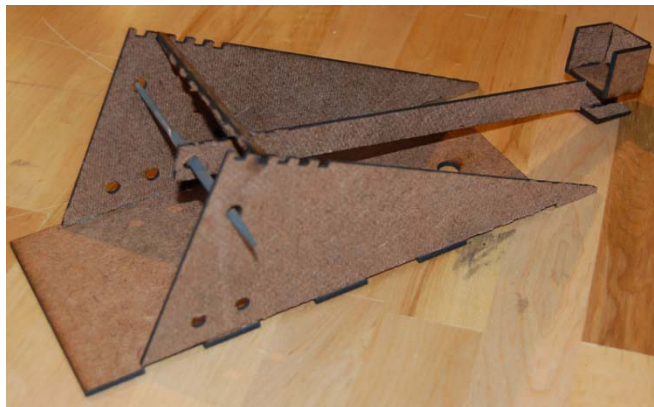




# Projects



- Concept of a Fab Lab impact communities
  - Education for under-served area
- Compliment Illinois Math and Science Standards





# Marketing



IPRO 333:  
MSI-entists



fablab

Contact Blake Davis -  
Cindy Oblenida - Sabina Pop to schedule your visit.  
ipro333@it.edu  
[http://en.wikipedia.org/wiki/Fab\\_Lab\\_at\\_MSI](http://en.wikipedia.org/wiki/Fab_Lab_at_MSI)

AT THE MUSEUM OF SCIENCE AND INDUSTRY

Interprofessional Projects Program  
Illinois Institute of Technology  
3300 South Federal Street  
Chicago, IL 60616-3793



- Open house invitations
- Brochure
- Business cards
- Promotional video
- Midwest Fab Lab Network Symposium
- New user groups identified



# Obstacles

- Logistics
  - Travel
  - Scheduling
- Collaboration with MSI
- Broken equipment
- Sharing
- Liability





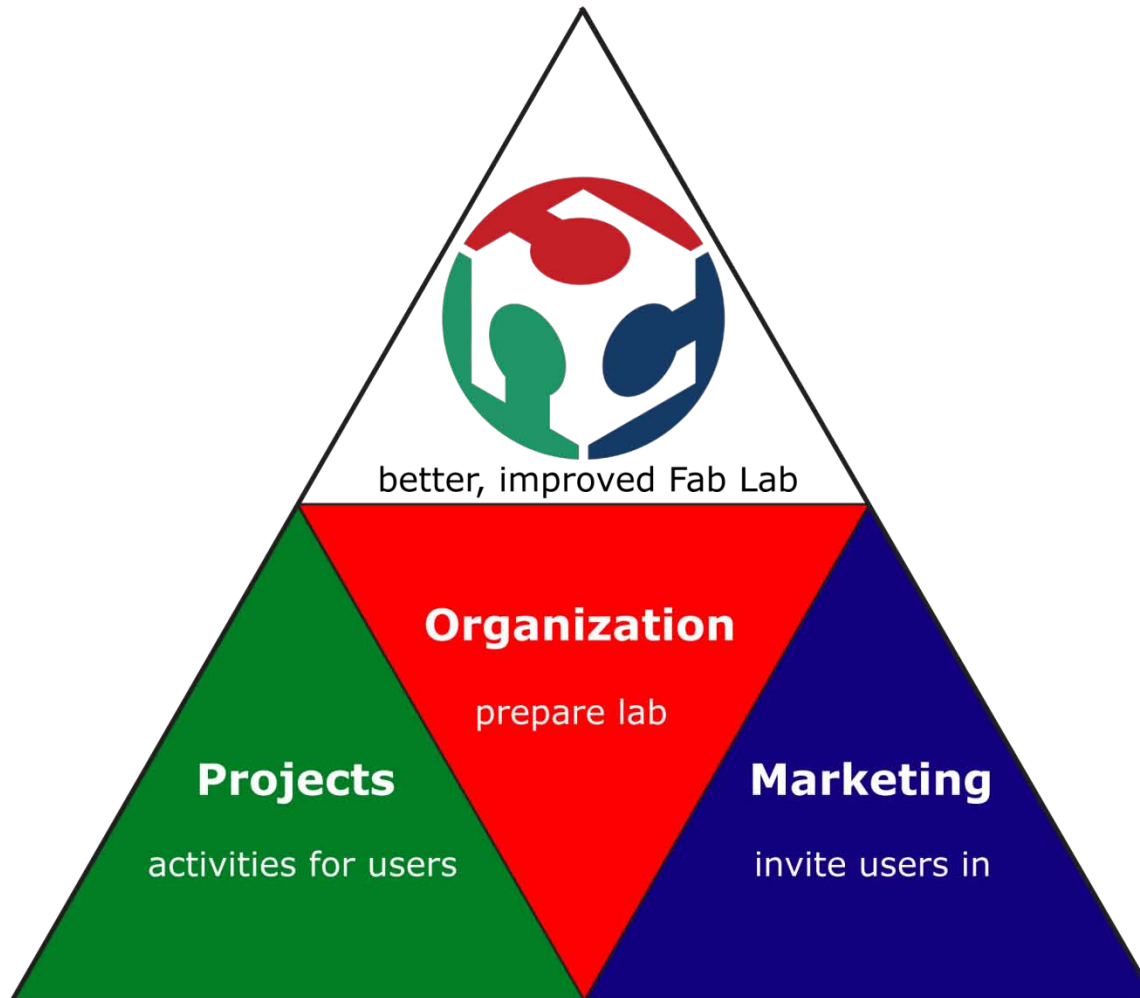
# Future Goals



- Sustainability
  - Funding
  - Staffing
- Business Plan (EnPro)
  - MSI Advisory Board
- Evaluation of tutorials
  - Education
  - Validity
- Events



# Conclusion





# Conclusion

- Positive impact to community
  - Education
  - IIT
- Wider range of users
- Prepared for use





# Acknowledgements

---

---

- MSI
  - Steven Willis
- IPRO office
  - Tom Jacobius
  - Jennifer Keplinger
- IIT Faculty and Staff
  - John Kriegshauser, Director of IIT Materials Lab
  - Kelly Laas, Center for the Study of Ethics in the Professions
  - Dr. Gatchell & Prof. Davis





# Questions

