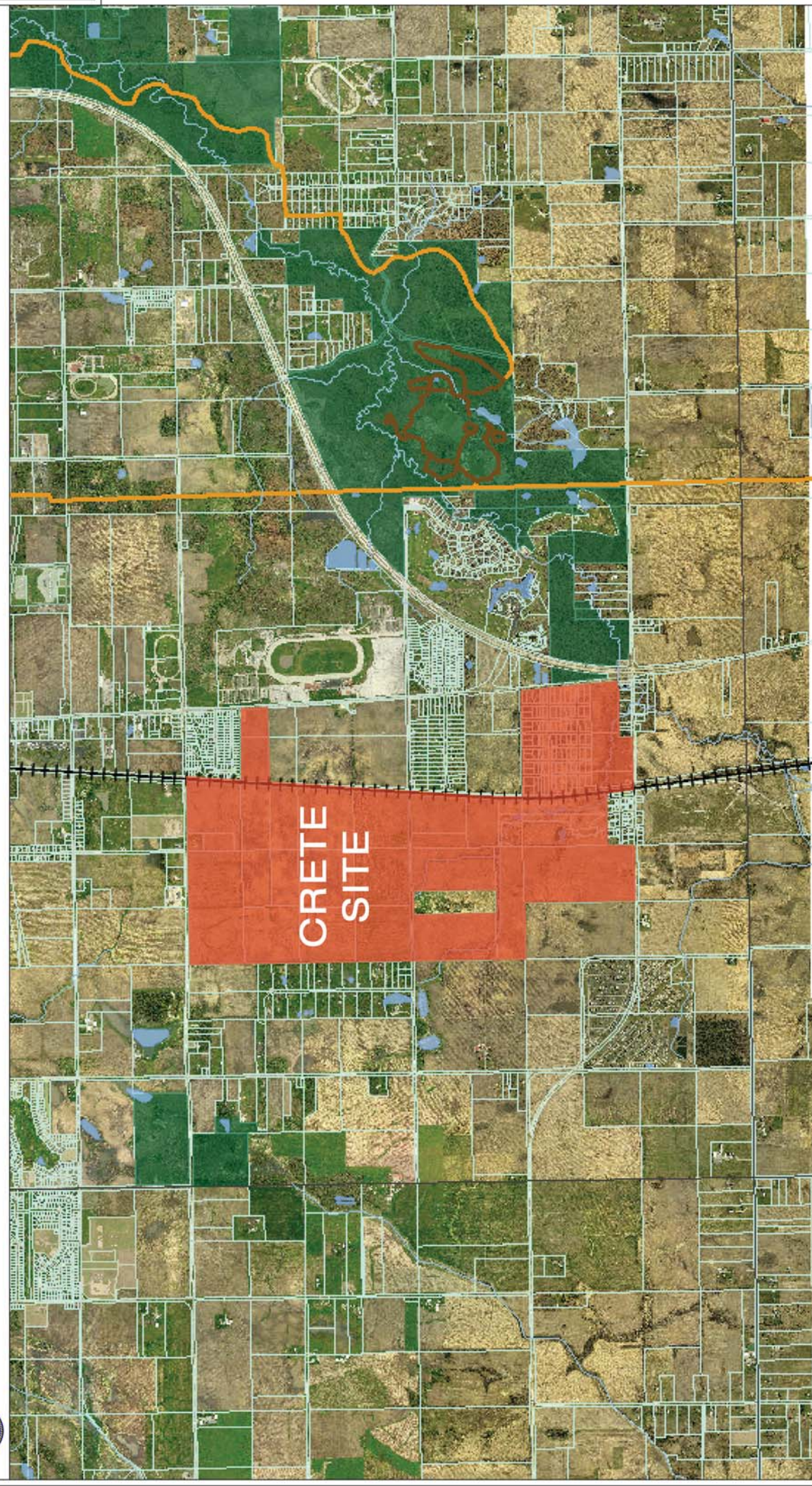
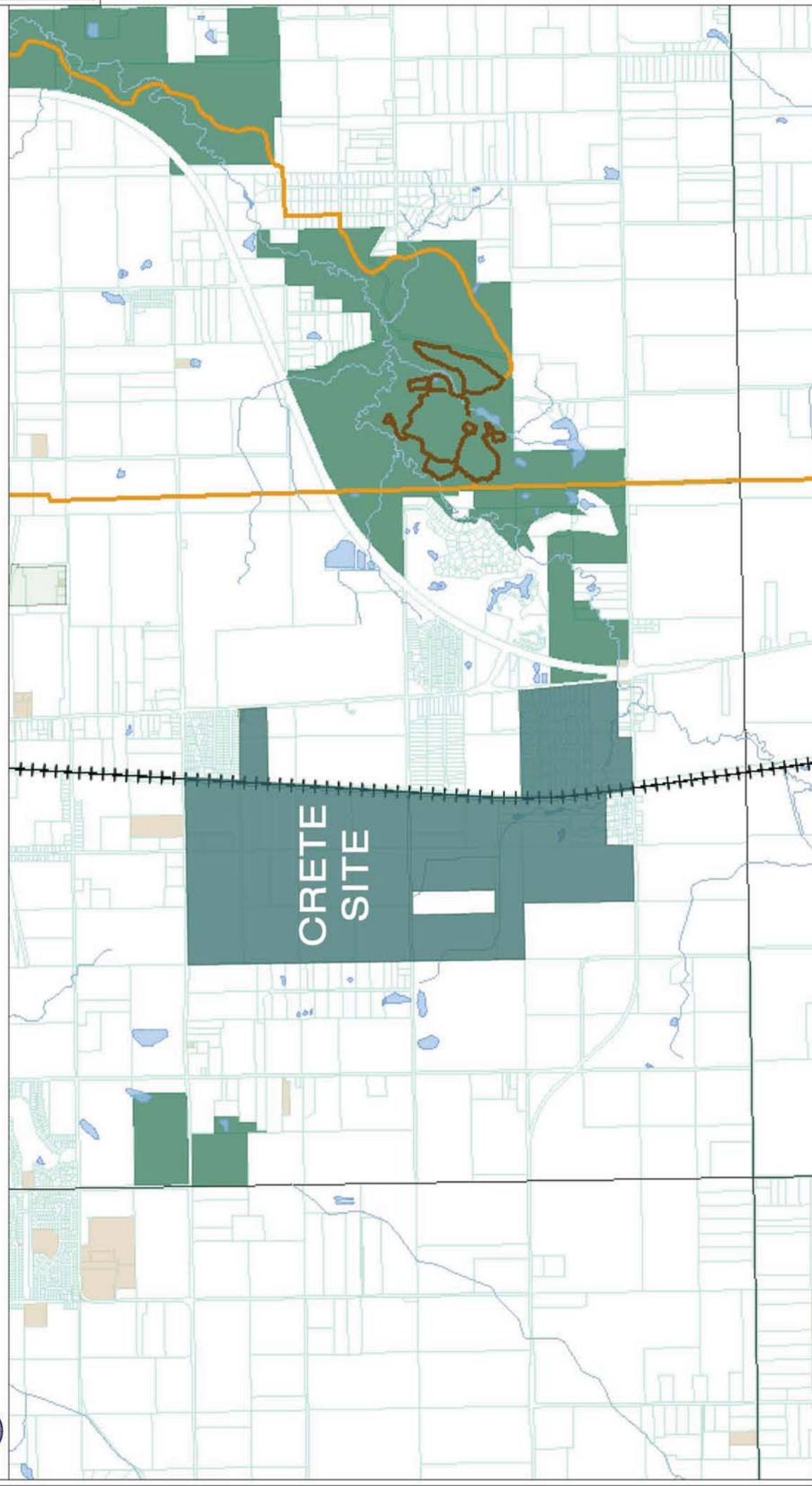


Scale: 1:30,000  
 0 2250 4500 6750 9000 ft.

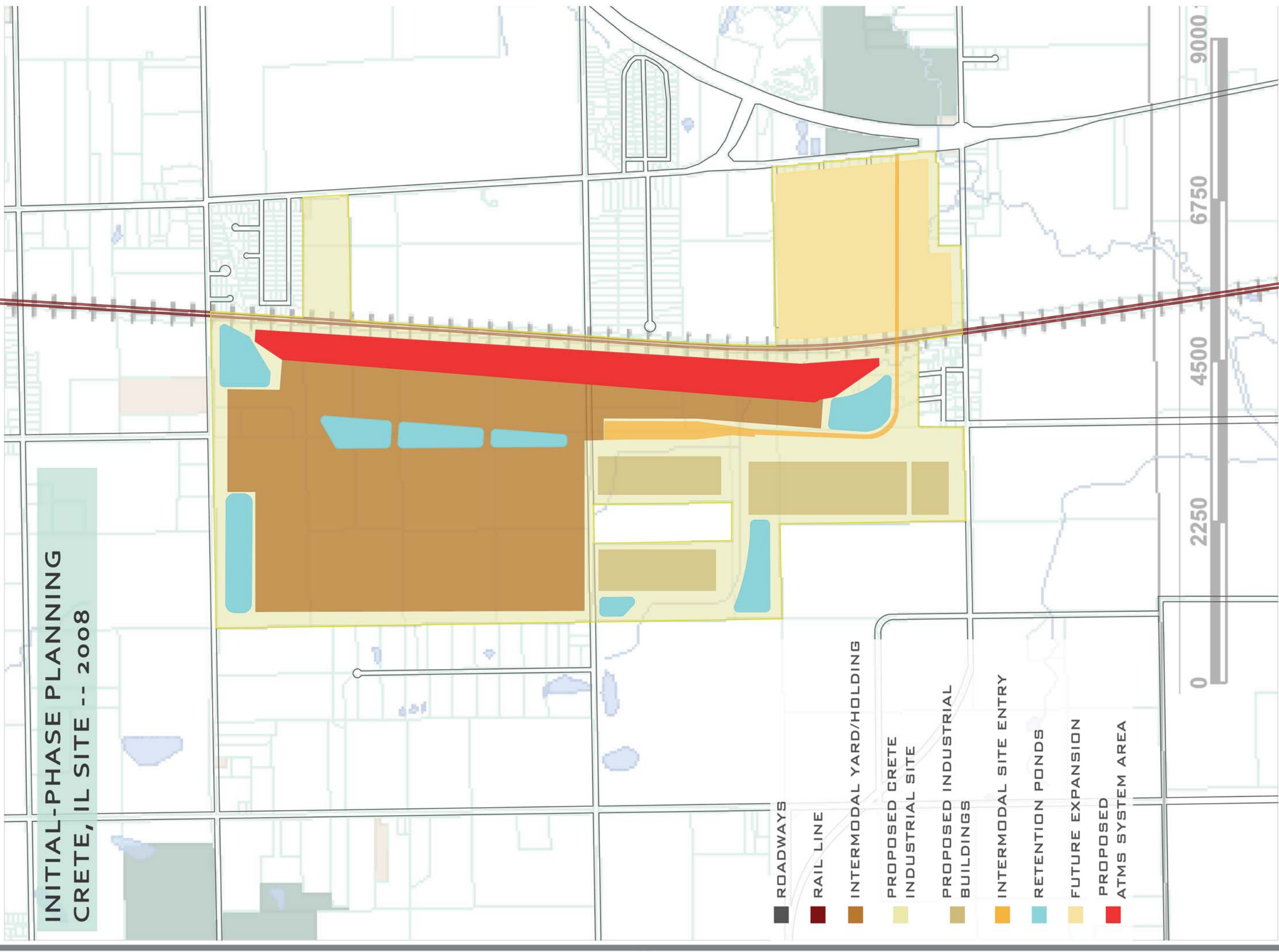


Scale: 1:30,000  
 0 2250 4500 6750 9000 ft.

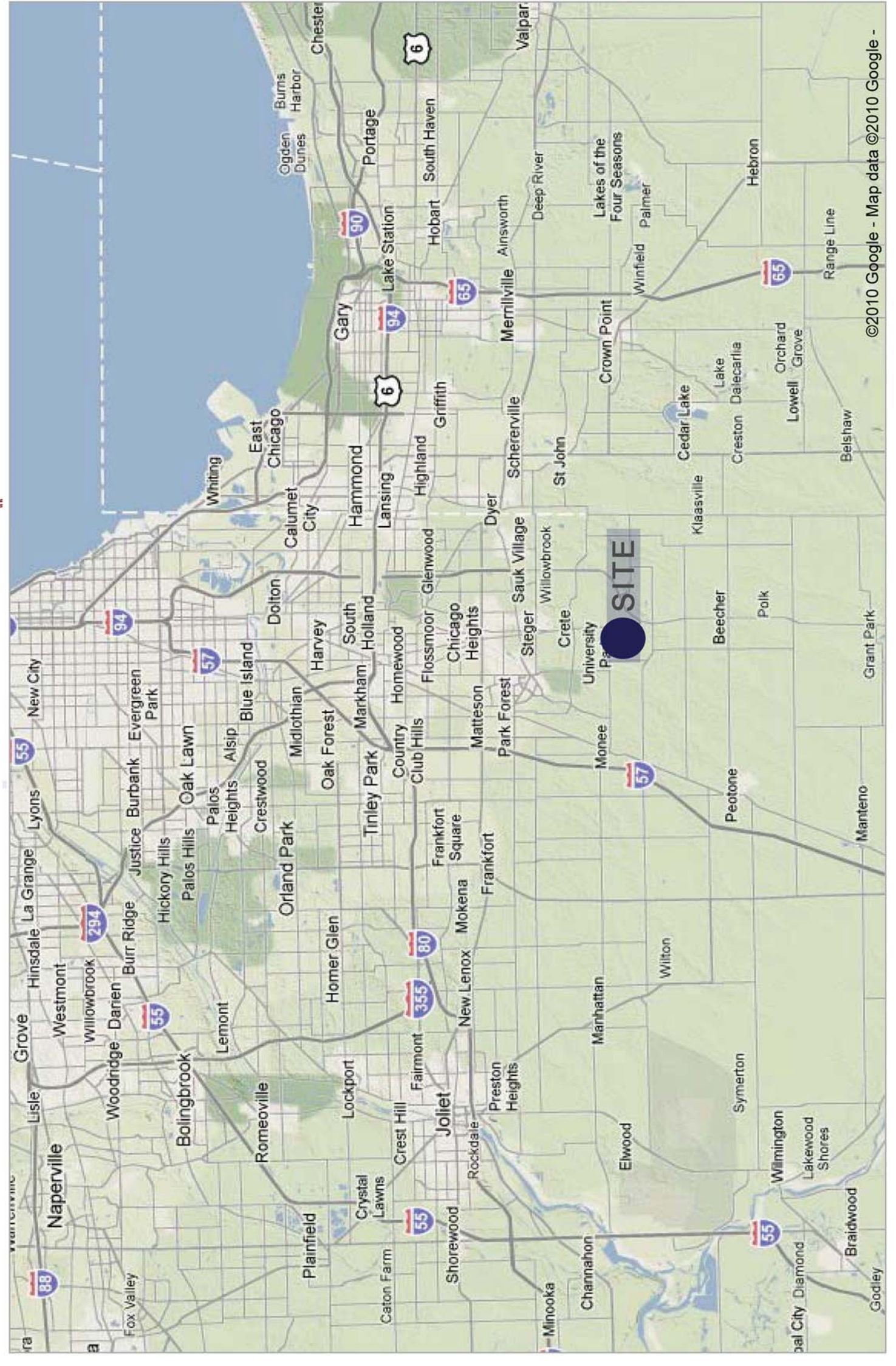
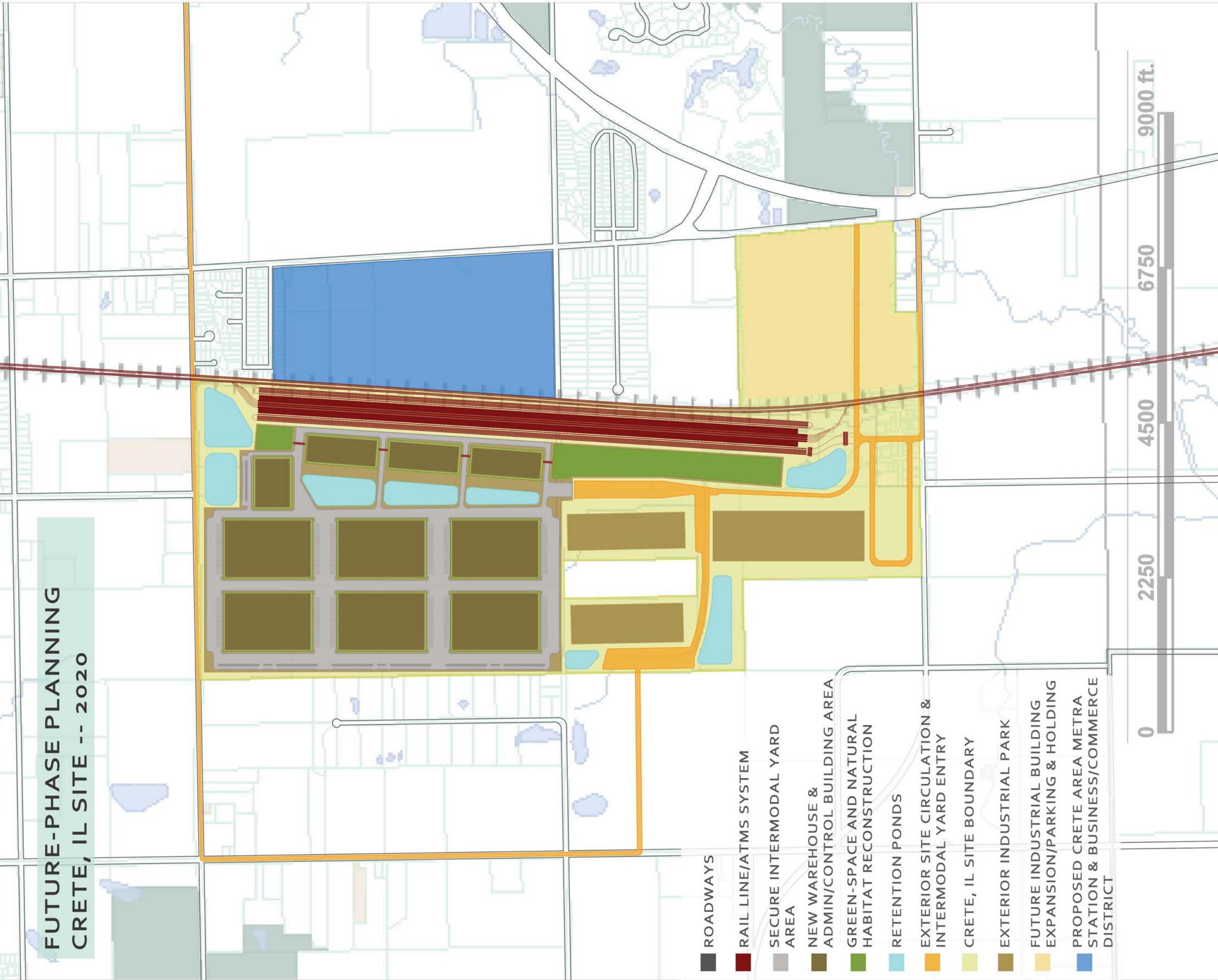


Scale: 1:30,000  
 0 2250 4500 6750 9000 ft.

INITIAL-PHASE PLANNING  
 CRETE, IL SITE -- 2008



FUTURE-PHASE PLANNING  
 CRETE, IL SITE -- 2020



CRETE SITE CHARACTERISTIC COMPARISONS		Old Site Design	New Site Design
Site Size in Acres	1000 Acres	1000 Acres	1000 Acres
Site Size in Million SqFt	43.5 Million SqFt	43.5 Million SqFt	43.5 Million SqFt
Intermodal Area in Acres	300 Acres	300 Acres	86.8 Acres
Intermodal Area in Million SqFt	13 Million SqFt	13 Million SqFt	3.75 Million SqFt
Total Building in Acres	137.75 Acres	220.5 Acres	220.5 Acres
Total Building in Million SqFt	6 Million SqFt	9.6 Million SqFt	9.6 Million SqFt
Acres of Intermodal to one Acre of Building	2.47 Acres per building Acre	39 Acres per building Acre	39 Acres per building Acre

Notes:  
 The capacity of the intermodal area (in lifts per day) stays the same in both designs  
 The original designs has no room for future alterations  
 The original design had no room for trucks on site to alleviate traffic issues  
 The ratio of intermodal to building acres was made 5.5 times better

iPRO 307: ATMS INTERMODAL TRANSPORTATION  
 & CONTAINER FACILITIES DEVELOPMENT

