



IPRO 333: Fab Lab

Dream **IIT**, Design **IIT**, Fabricate **IIT**

Presenters:
Keenan Gottschall
Rachel Hendricks
Jered Linares



Purpose

Partnership between IIT and Museum of Science of Industry (MSI) to develop and promote the Fabrication Laboratory (Fab Lab)







What is a Fab Lab?

An open access workshop that houses digital fabrication equipment for rapid prototyping





Problem Statement



The Fab Lab at MSI is under-developed and under-utilized



Objectives

- Organization
 - Prepare Fab Lab for future use
- Projects
 - Develop projects that adhere to Illinois Math and Science standards
- Marketing
 - Publicize the Fab Lab to the community



MSI-entists

IPRO 333: MSI-entists

Team Leaders:
Keenan Gottschall & Michael Gajdorus

Projects

Develop projects that adhere to Illinois Math and Science standards.

Howard Clark
Jered Linares
Paul Marks
Jeremy Young
Raymond Zhou

Organization

Ready the lab for safe, responsible use.

Andrew Bonesz
Carlie Douglas
Michael Gajdorus
Keenan Gottschall
Rachel Hendricks
Clayton Kimball
James Mellom
Carl Stelcel

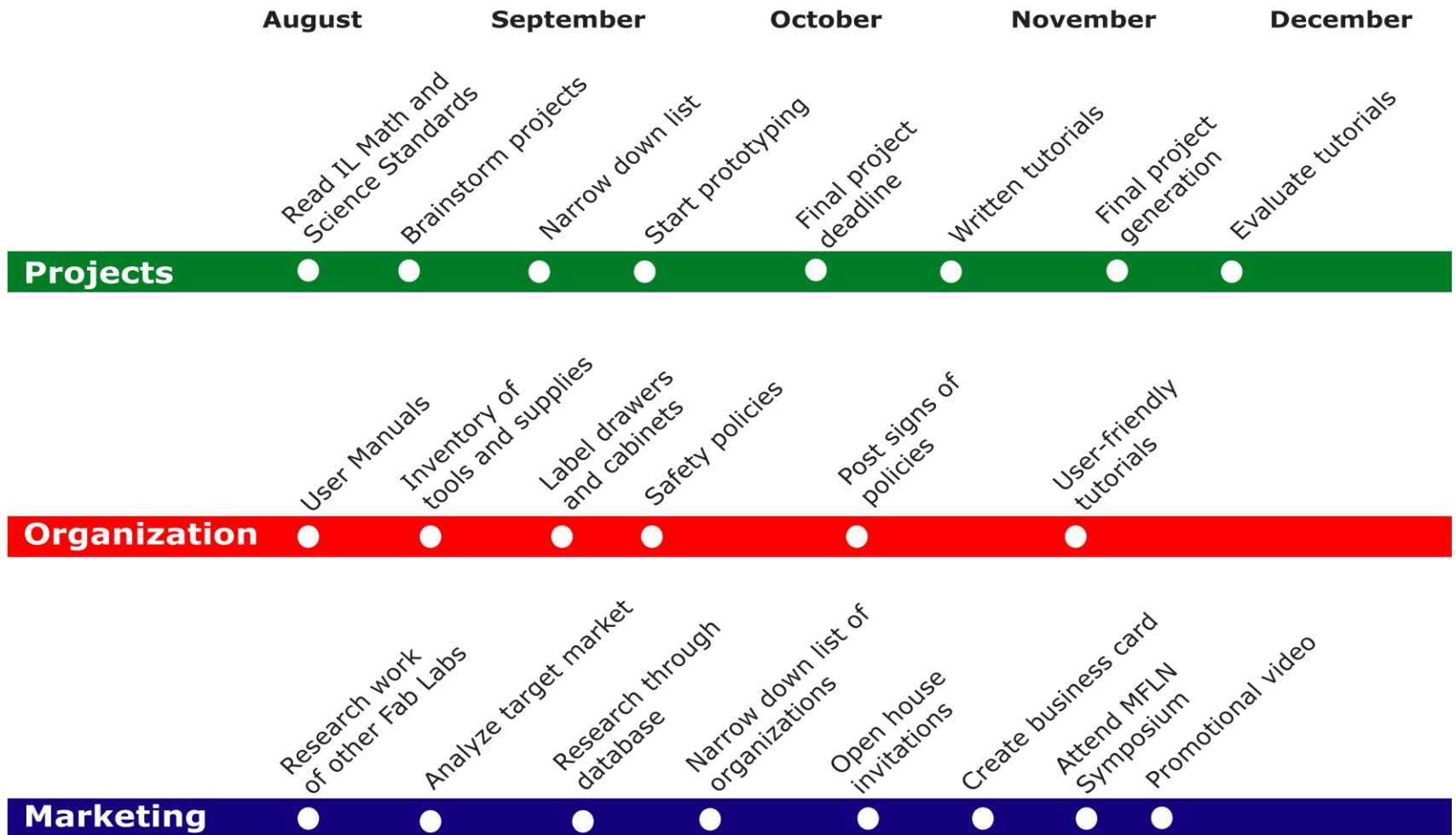
Marketing

Create a self-sustaining Fab Lab.

Andrew Bonesz
Keenan Gottschall
Cindy Oblenida
Sabina Pop



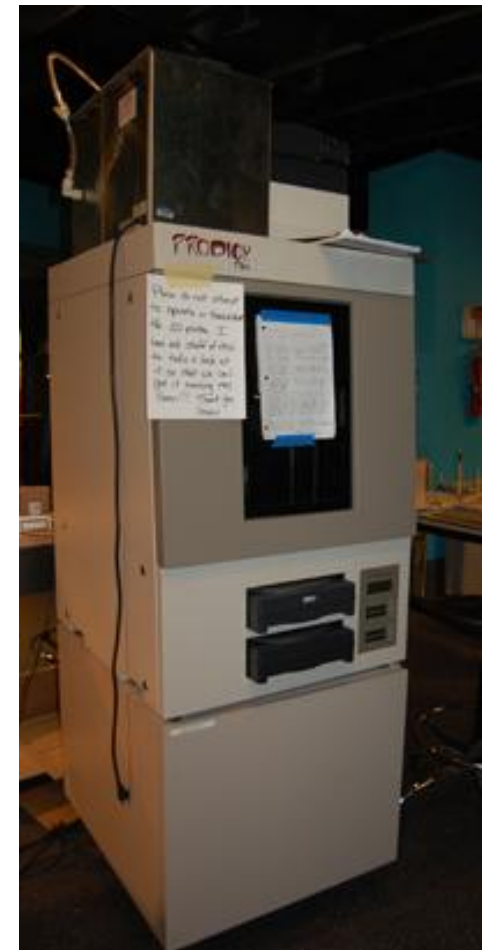
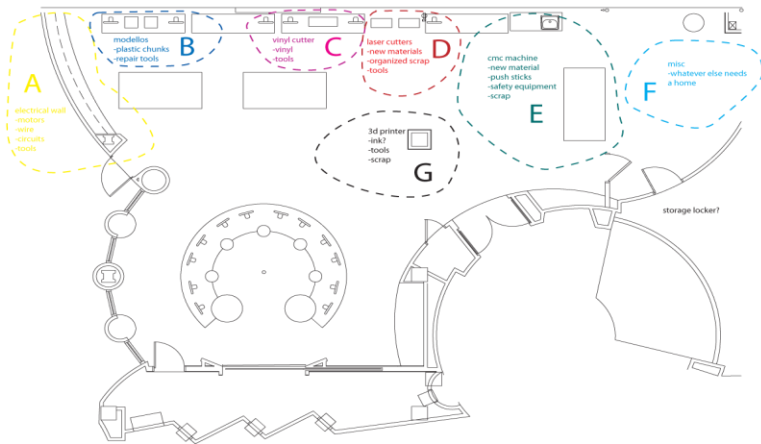
Timeline





Organization

- User manuals/tutorials
- Inventory
- Labels
- Safety policies
- Equipment

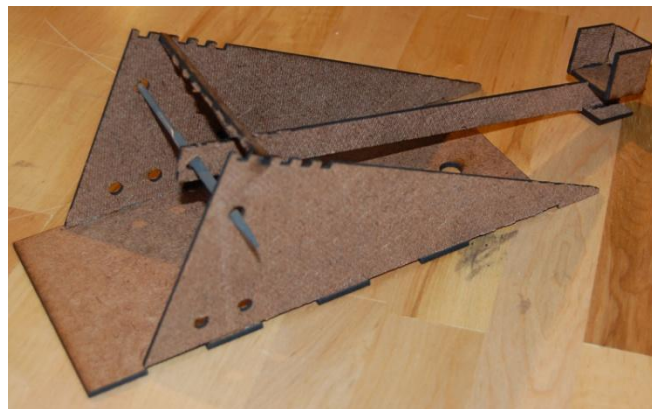




Projects



- Concept of a Fab Lab impact communities
 - Education for under-served area
- Compliment Illinois Math and Science Standards





Marketing



- Open house invitations
- Brochure
- Business cards
- Promotional video
- Midwest Fab Lab Network Symposium
- New user groups identified





Obstacles

- Logistics
 - Travel
 - Scheduling
- Collaboration with MSI
- Broken equipment
- Sharing
- Liability





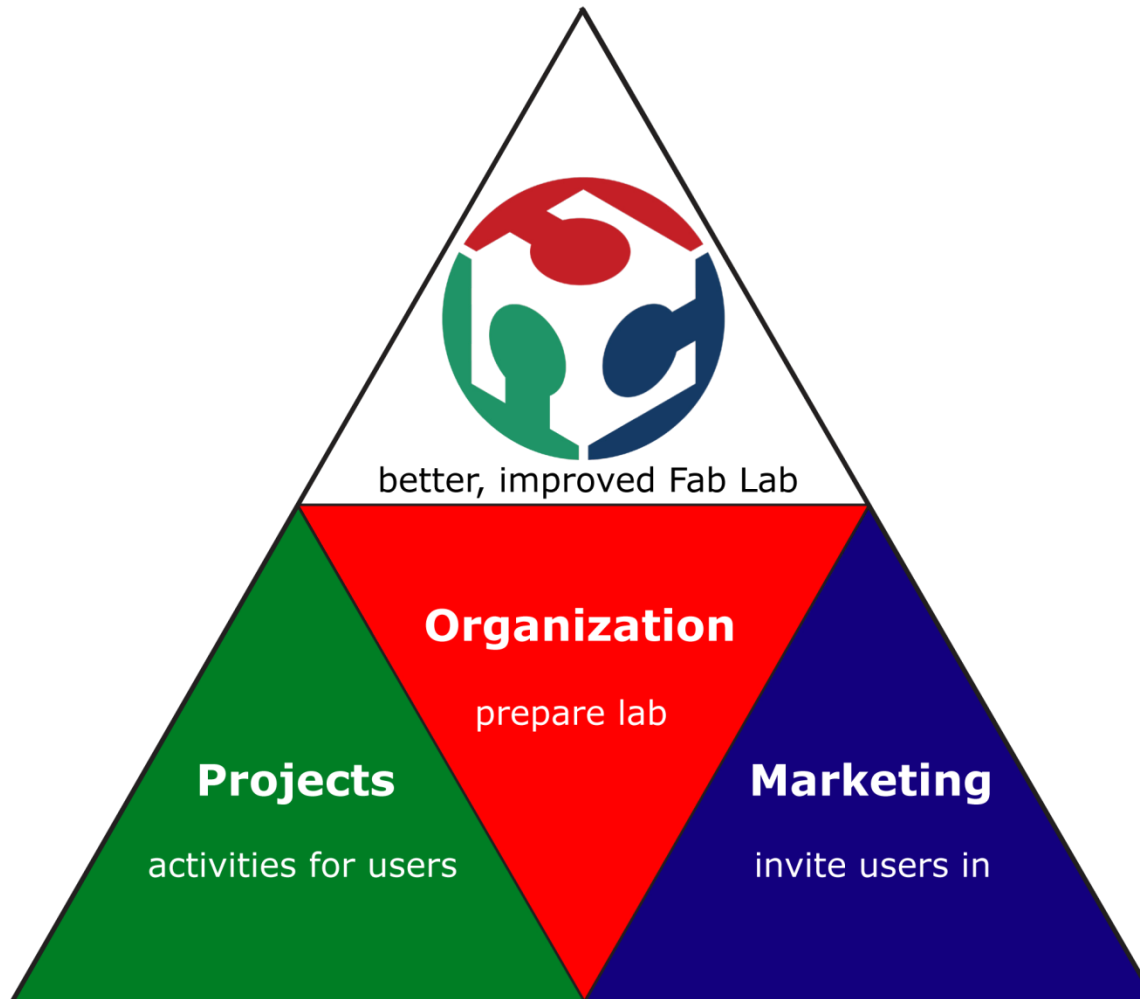
Future Goals



- Sustainability **IITy**
 - Funding
 - Staffing
- Business Plan (EnPro)
 - MSI Advisory Board
- Evaluation of tutorials
 - Education
 - Validity
- Events



Conclusion





Conclusion

- Positive impact to community
 - Education
 - IIT
- Wider range of users
- Prepared for use





Acknowledgements

- MSI
 - Steven Willis
- IPRO office
 - Tom Jacobius
 - Jennifer Keplinger
- IIT Faculty and Staff
 - John Kriegshauser, Director of IIT Materials Lab
 - Kelly Laas, Center for the Study of Ethics in the Professions
 - Dr. Gatchell & Prof. Davis



Questions

