



-1752-



-2010-

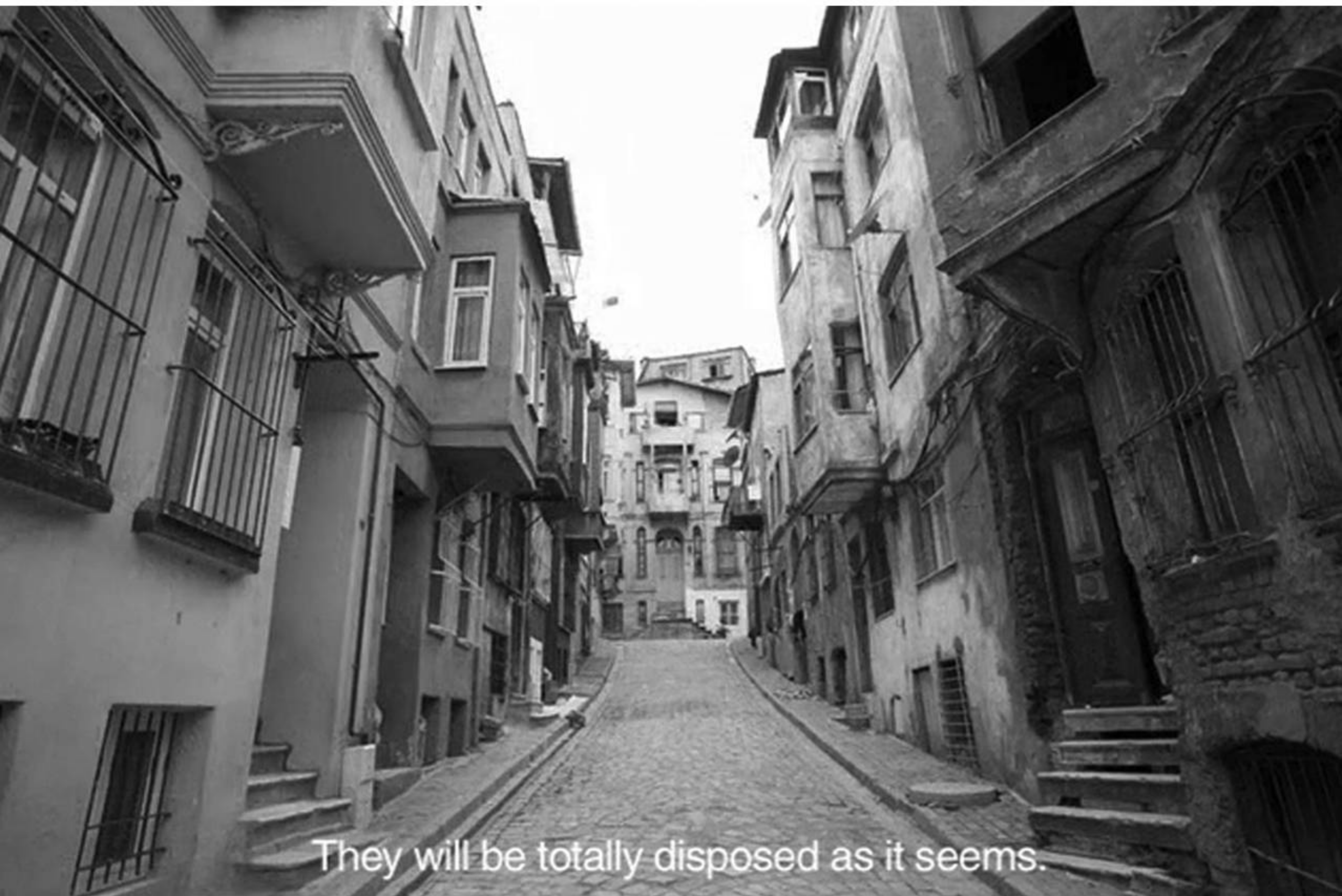
ISTANBUL

BALAT









They will be totally disposed as it seems.





TODAY



There is a local culture here



One of the last real quarters of the city.



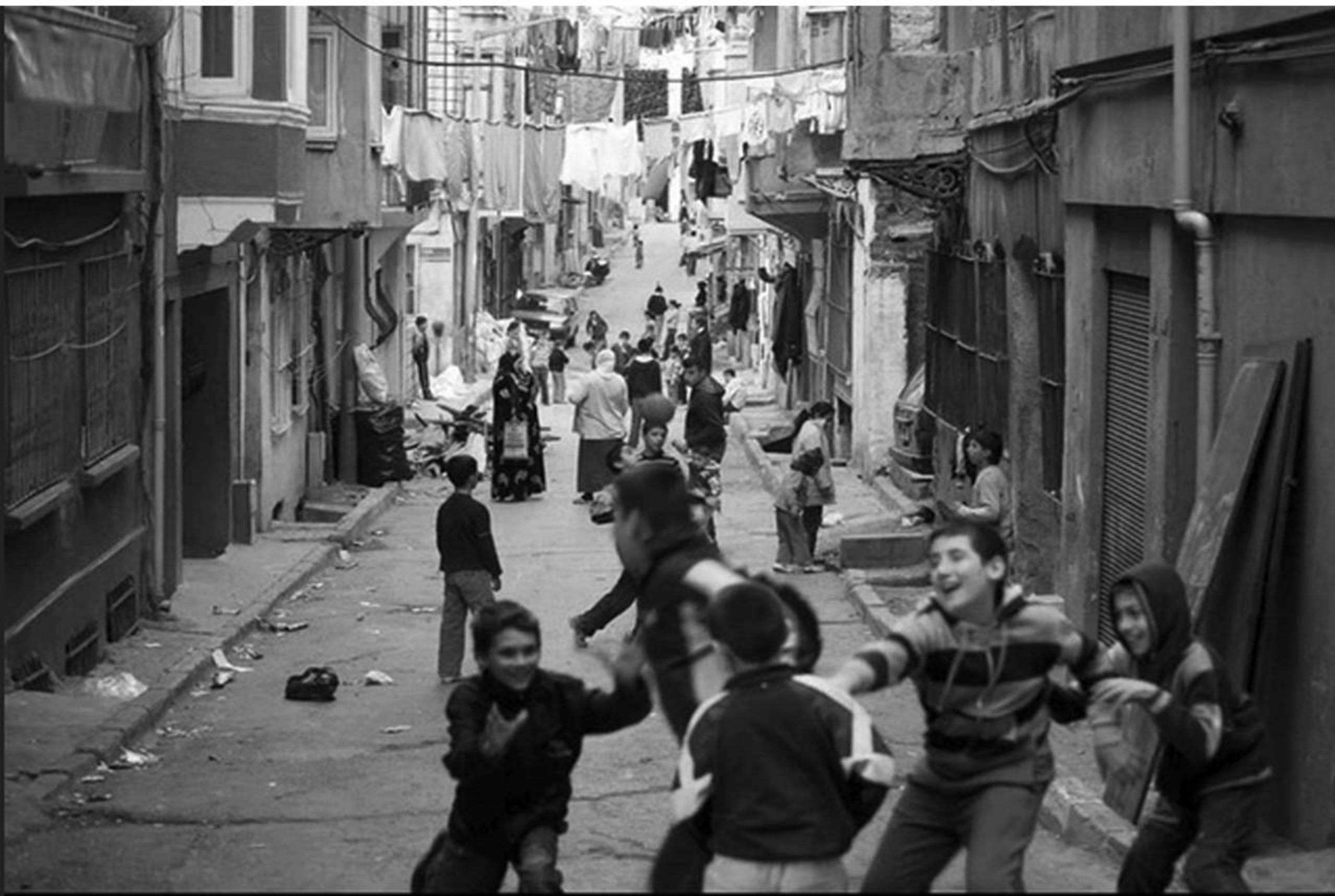














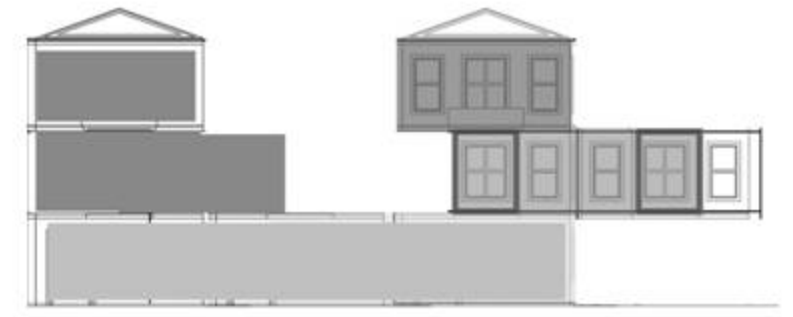
PAST



PRESENT



FUTURE ?



NEIGHBORHOOD HISTORY



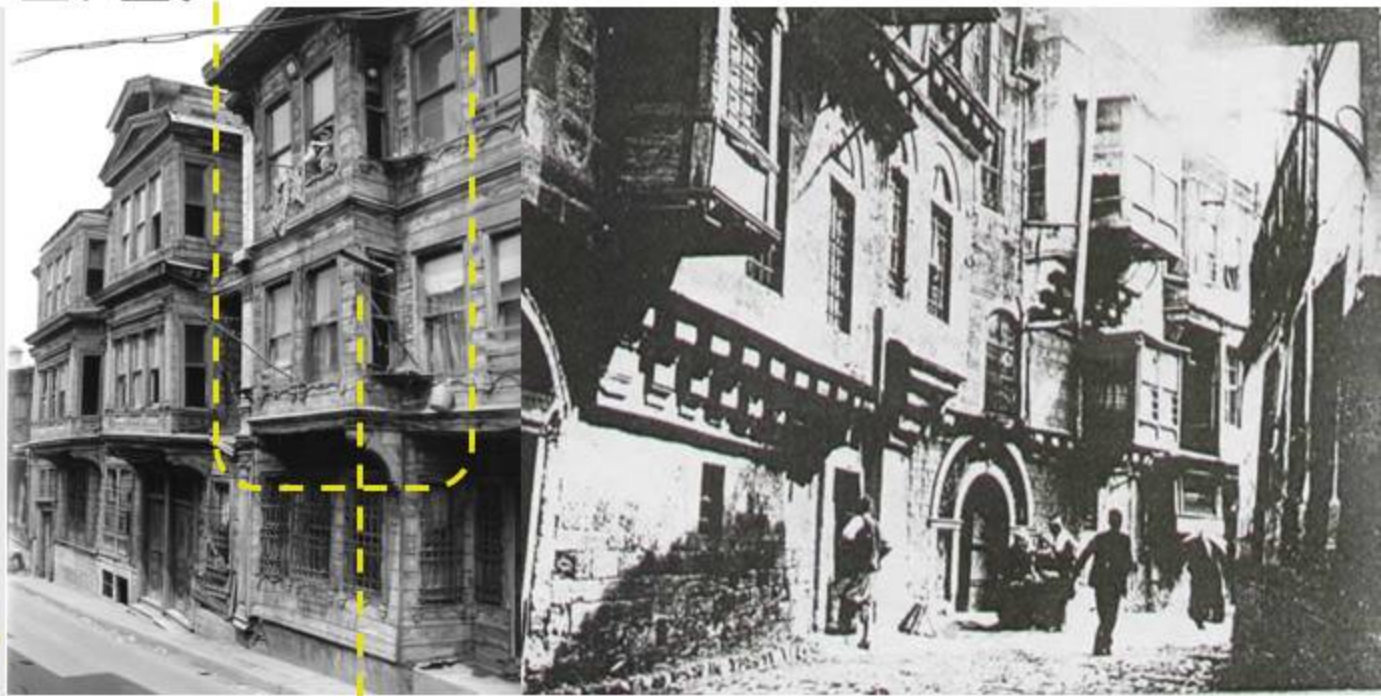
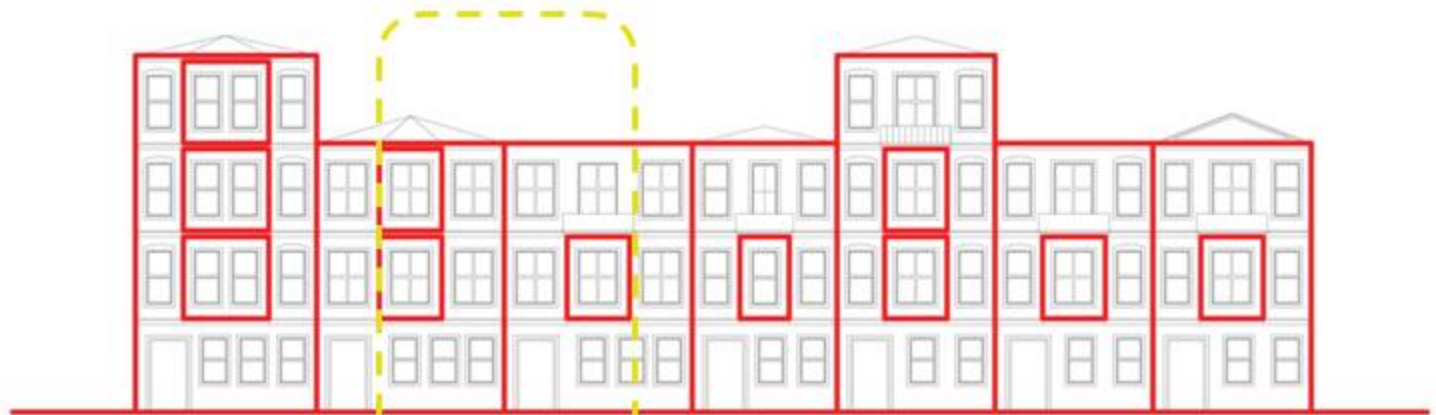
AN IMPORTANT SEGMENT OF GREEKS WHO LIVED IN BALAT WHO WERE WELL-EDUCATED AND FLUENT IN SEVERAL LANGUAGES, HELD HIGH GOVERNMENT POSITIONS INTERPRETERS OR DIPLOMATS; HOLD AN IMPORTANT ROLE IN ISTANBUL'S SOCIO-ECONOMIC FRAME BY DEALING WITH MONEY CHANGING, TRADING, NAVIGATION AND COMMISSION BROKERAGE.



THE TURKISH HOUSE IN AN URBAN SETTING WAS A REFLECTION OF THE REQUIREMENTS OF FAMILY LIFE. THE WOMEN WERE EXCLUDED FROM PUBLIC LIFE AND THEIR EXISTENCE WAS CONFINED WITHIN THE WALLS OF A SINGLE HOUSE. THE VARIOUS DOMESTIC CHORES PERFORMED JOINTLY BY THE WOMEN OF THE EXTENDED FAMILY REQUIRED THE ORGANIZATION OF THE HOUSE AROUND OPEN INTERIOR SPACES, ENCLOSED AND HIDDEN FROM THE OUTSIDE WORLD. THE FRONT OF THE HOUSES FACING THE STREET WERE BLANK OR HAD VERY FEW WINDOWS. AN UPSTAIR ROOM WITH VIEW OF THE STREET HAD WINDOWS CONCEALED BY WOODEN LATTICE-WORK SCREENS SO THAT WOMEN COULD OBSERVE THE ACTIVITIES ON THE STREET WITHOUT BEING SEEN



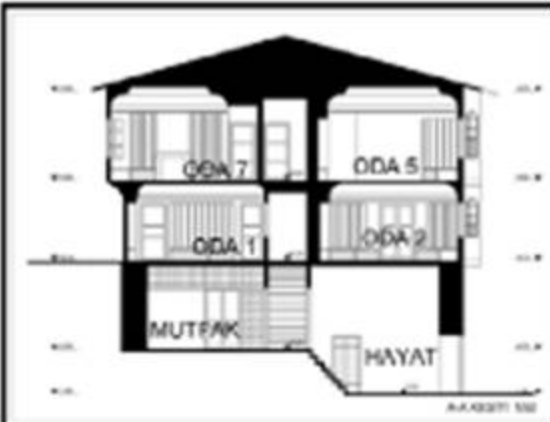
NEIGHBORHOOD HISTORY

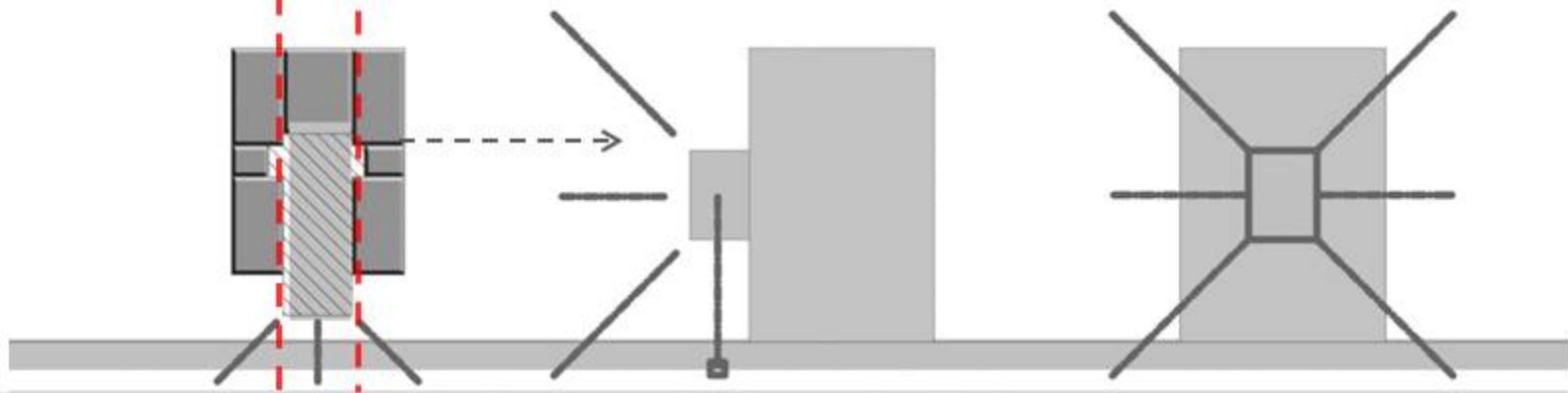
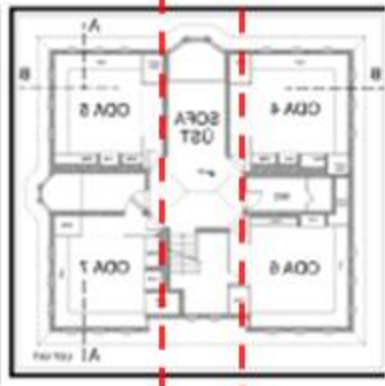


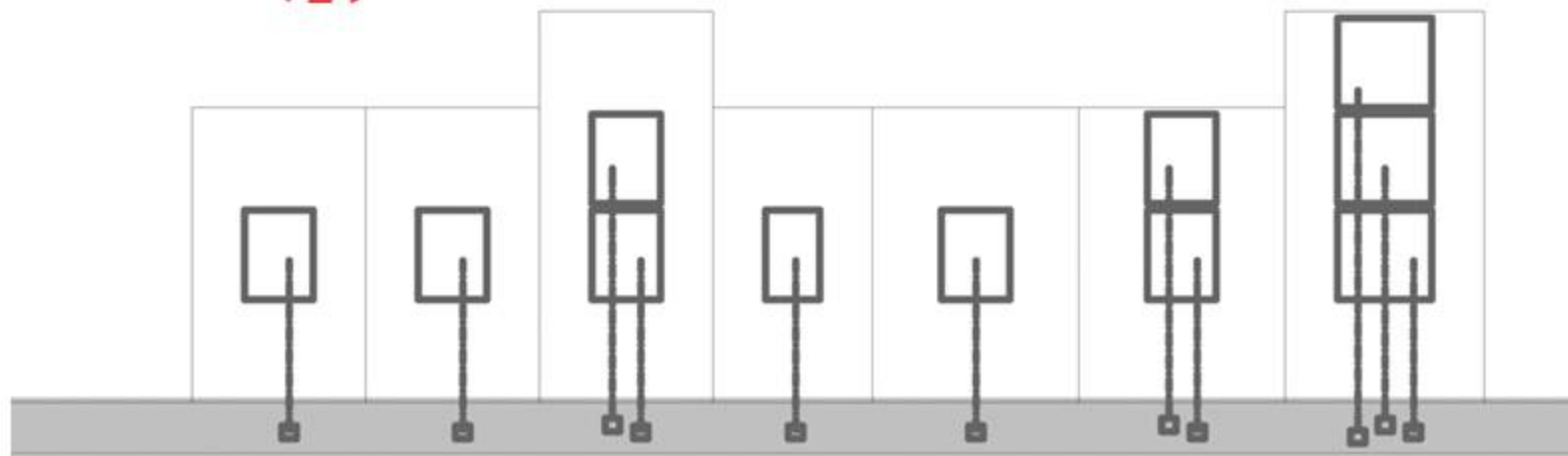
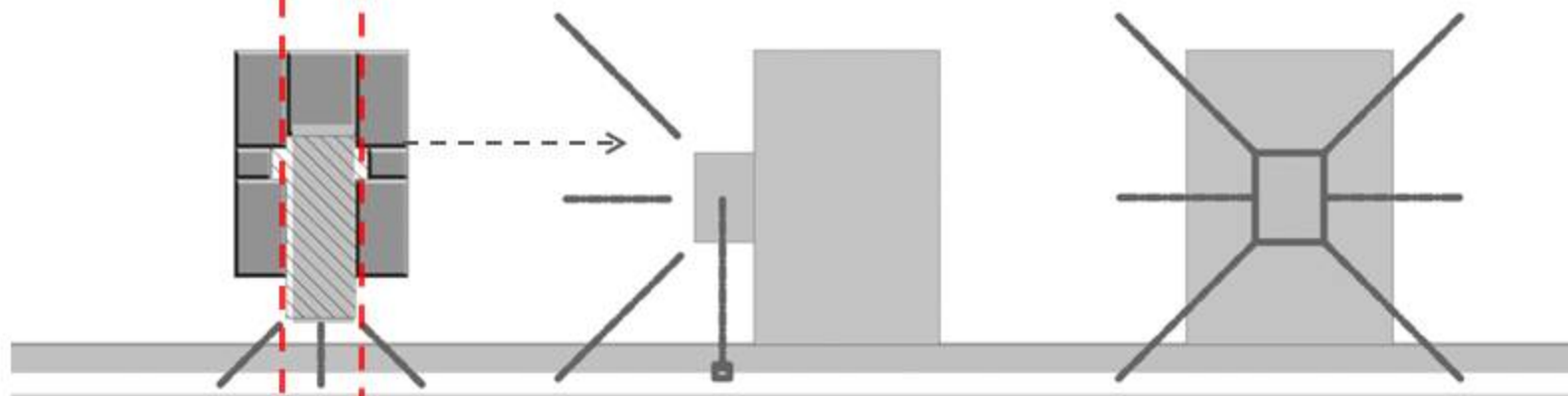
AN IMPORTANT SEGMENT OF GREEKS WHO LIVED IN SALAT WHO WERE WELL-EDUCATED AND FLUENT IN SEVERAL LANGUAGES, HELD HIGH GOVERNMENT POSITIONS INTERPRETERS OR DIPLOMATS; HOLD AN IMPORTANT ROLE IN ISTANBUL'S SOCIO-ECONOMIC FRAME BY DEALING WITH MONEY CHANGING, TRADING, NAVIGATION AND COMMISSION BROKERAGE.



THE TURKISH HOUSE IN AN URBAN SETTING WAS A REFLECTION OF THE REQUIREMENTS OF FAMILY LIFE. THE WOMEN WERE EXCLUDED FROM PUBLIC LIFE AND THEIR EXISTENCE WAS CONFINED WITHIN THE WALLS OF A SINGLE HOUSE. THE VARIOUS DOMESTIC CHORES PERFORMED JOINTLY BY THE WOMEN OF THE EXTENDED FAMILY REQUIRED THE ORGANIZATION OF THE HOUSE AROUND OPEN INTERIOR SPACES, ENCLOSED AND HIDDEN FROM THE OUTSIDE WORLD. THE FRONT OF THE HOUSES FACING THE STREET WERE BLANK OR HAD VERY FEW WINDOWS. AN UPSTAIR ROOM WITH VIEW OF THE STREET HAD WINDOWS CONCEALED BY WOODEN LATTICE-WORK SCREENS SO THAT WOMEN COULD OBSERVE THE ACTIVITIES ON THE STREET WITHOUT BEING SEEN







PUBLIC

1950 CHANGE OF THE NEIGHBORHOOD STRUCTURE



THE NEW INTERNAL IMMIGRANT FAMILIES WITH LOWER INCOME STARTED TO TAKE OVER THE PLACE. THERE WAS A SHARP FALL IN SOCIO-ECONOMIC STATUS OF THE QUARTER. SINGLE FAMILY HOUSES WERE DIVIDED INTO SMALLER UNITS, WHERE MORE THAN ONE FAMILY BEGAN TO LIVE WITH LOWER RENTS IN ADEQUATE CONDITIONS.



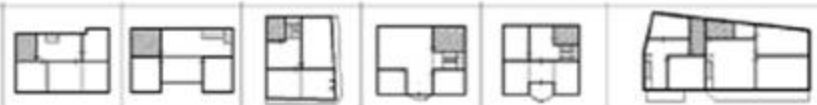
THE ALREADY POOR SOCIAL AND ECONOMIC CONDITIONS WORSENERD WHEN TRADE ACTIVITY WAS CUED BY THE RELOCATION OF THE INDUSTRY IN THE GOLDEN HORN.



THE SOCIO-ECONOMIC CHARACTERISTICS, AVERAGE INCOME OF THE HOUSEHOLD, BEHAVIOR CHARACTERISTIC AND LIFE HABITS HAVE CHANGED DRASTICALLY. THE LOWER INCOME GROUP WHICH INCLUDES INTERNAL IMMIGRANTS FROM RURAL AREAS OF ANATOLIA BECAME THE RESIDENT OF BALAT DISTRICT.

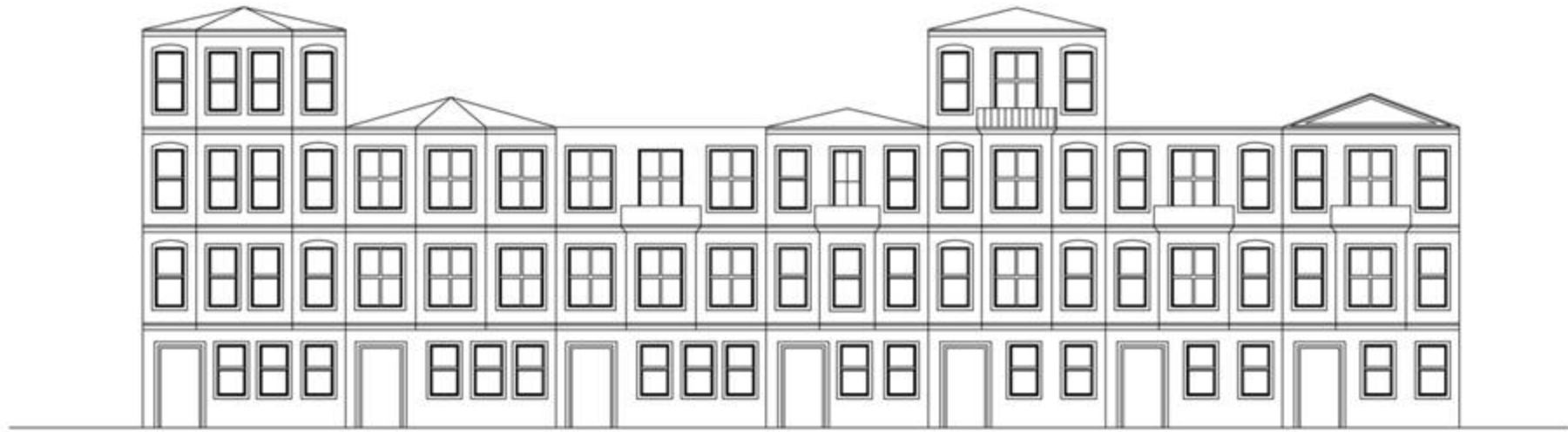


NEW URBAN PLAN CHANGED THE SOCIO-ECONOMIC STRUCTURE OF THE DISTRICT. THE SHORELINE REPLACED BY THE INDUSTRIAL BUILDINGS AND FACTORIES. AS THE HIGH INCOME GROUP LEFT THE NEIGHBORHOOD, THE RESIDENT TYPE STARTED TO CHANGE.

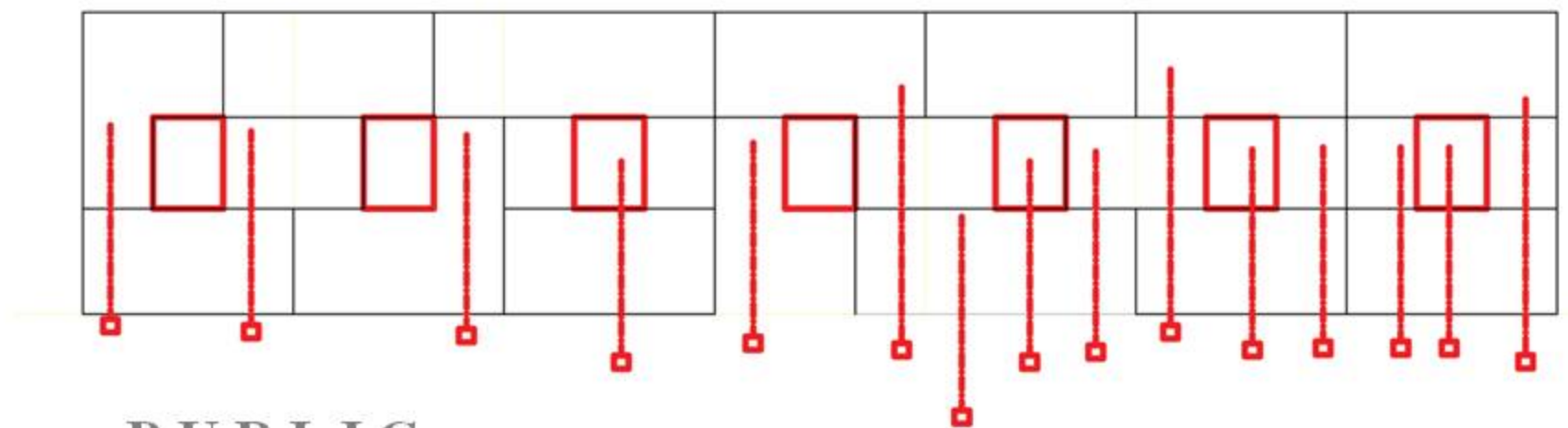


We have all we need.



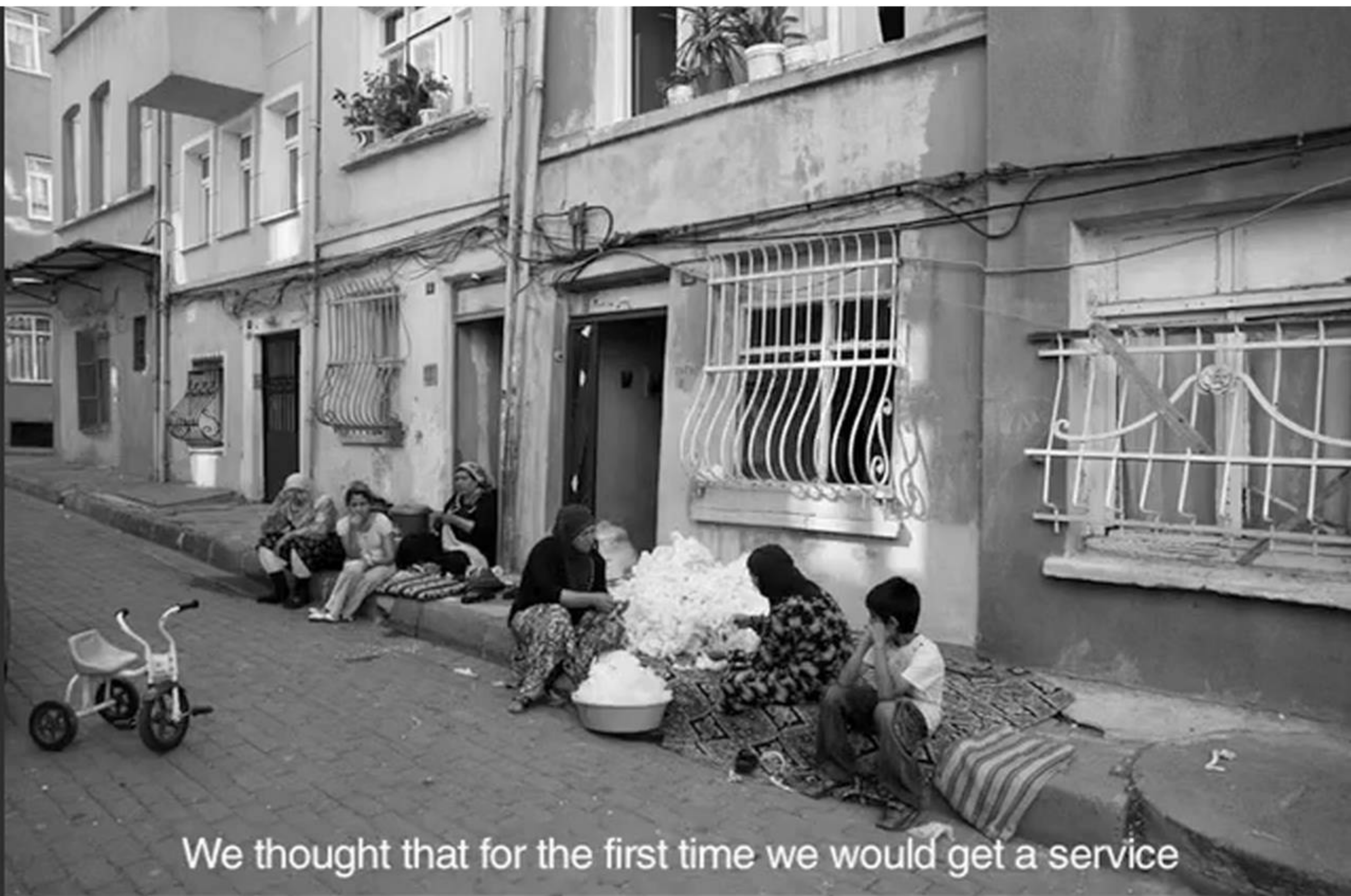






PUBLIC





We thought that for the first time we would get a service



But people have to live here.



We have all we need.







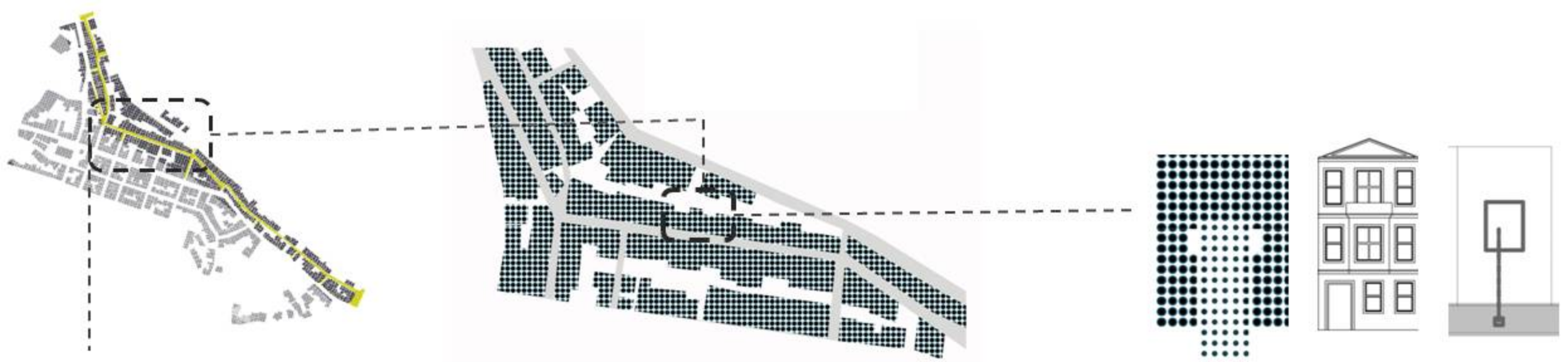
1997

FENER-BALAT DISTRICT LISTED
AS A WORLD HERITAGE SITE.

FENER-BALAT REHABILITATION PROJECT
HAS STARTED

THE PROGRAM WORKED UNDER
FOUR TITLES: RESTORATION OF
200 HOUSES, SOCIAL REHABILITA-
TION, RENOVATION OF HISTORICAL
BALAT MARKET AND ESTABLISH-
MENT OF A WASTE MANAGEMENT
STRATEGY.





1997

FENER-BLAT DISTRICT LISTED
AS A WORLD HERITAGE SITE.

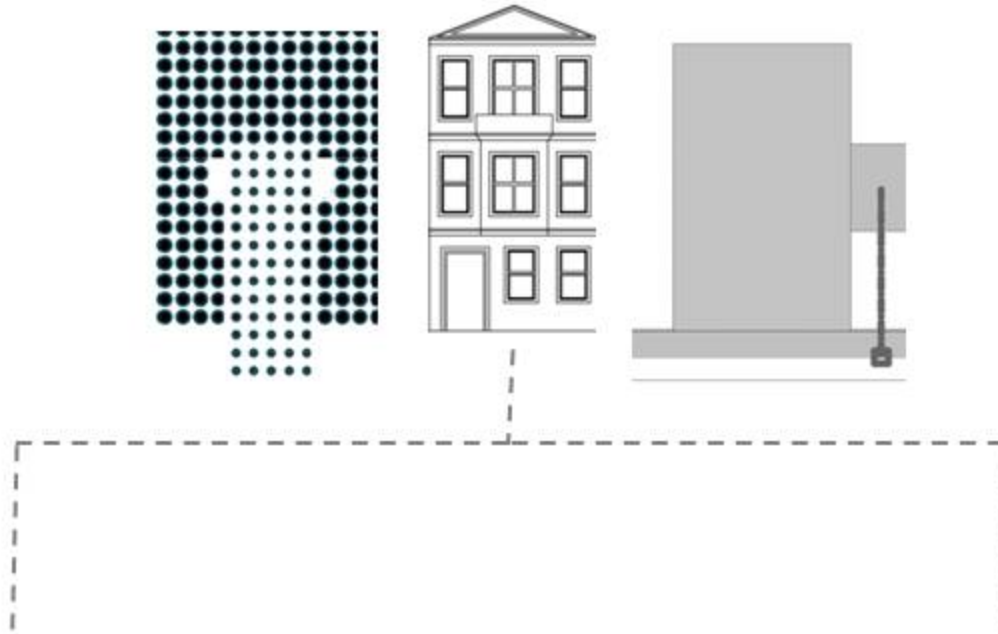
FENER-BALAT REHABILITATION PROJECT
HAS STARTED

THE PROGRAM WORKED UNDER
FOUR TITLES: RESTORATION OF
200 HOUSES, SOCIAL REHABILITA-
TION, RENOVATION OF HISTORICAL
BALAT MARKET AND ESTABLISH-
MENT OF A WASTE MANAGEMENT
STRATEGY.

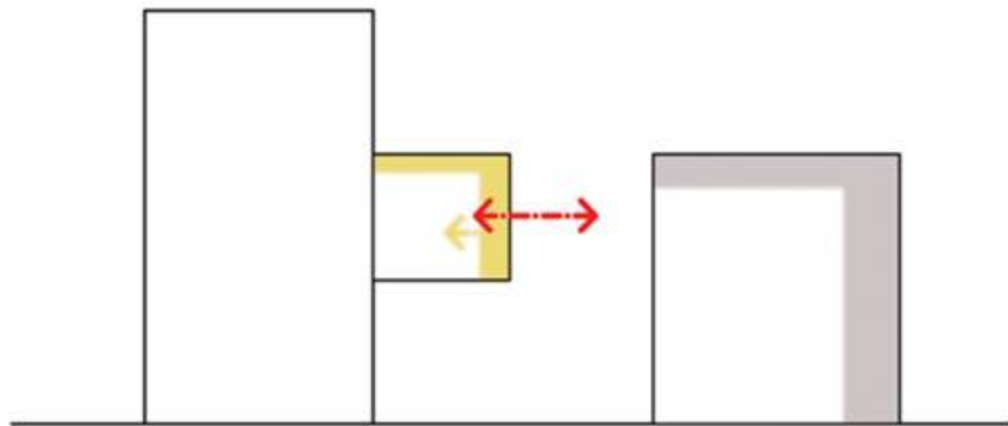
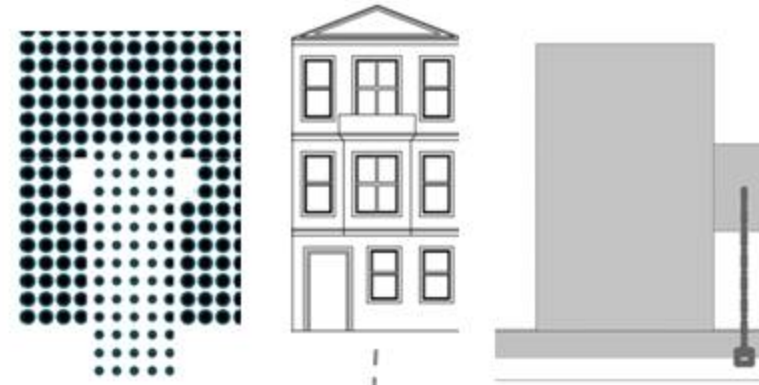
Reutilization of strategies and tactics with social and cultural uses in order to orient the positioning of Cumba in the neighborhood.



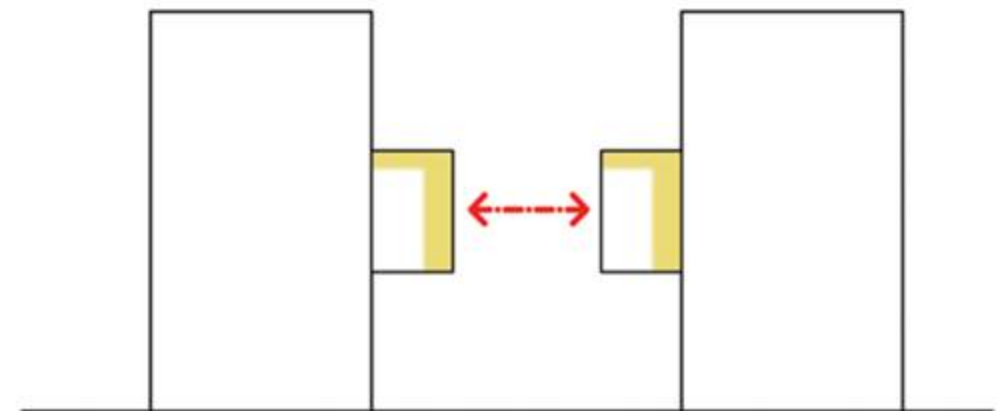
Reutilization of Cumba



Reutilization of Cumba

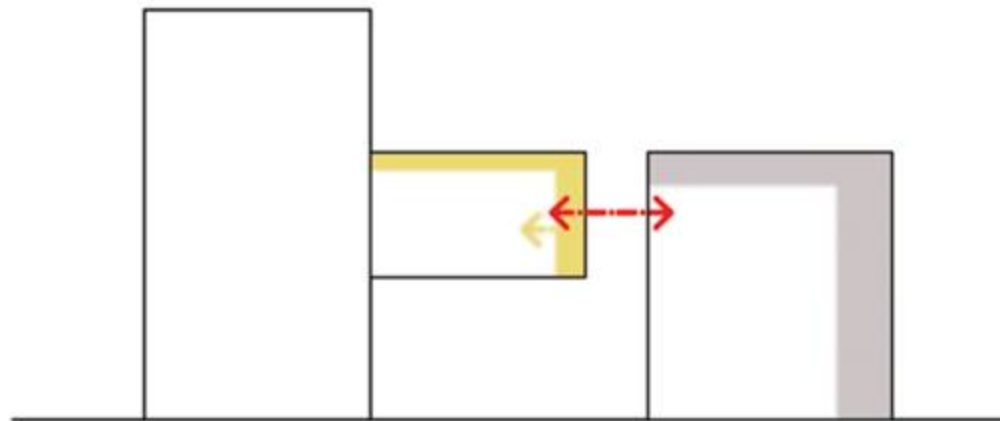
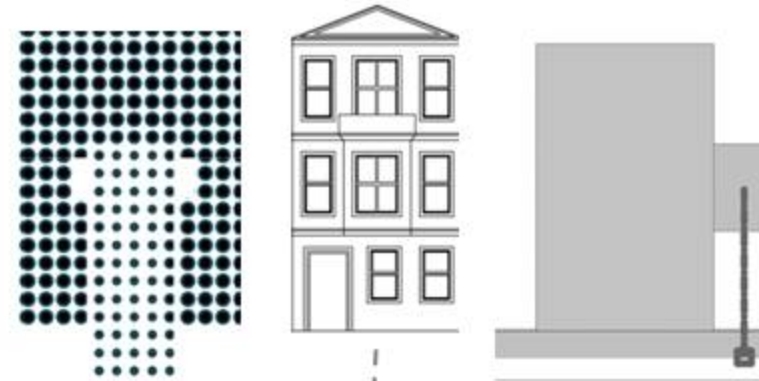


Superposition of Cumba and Public space

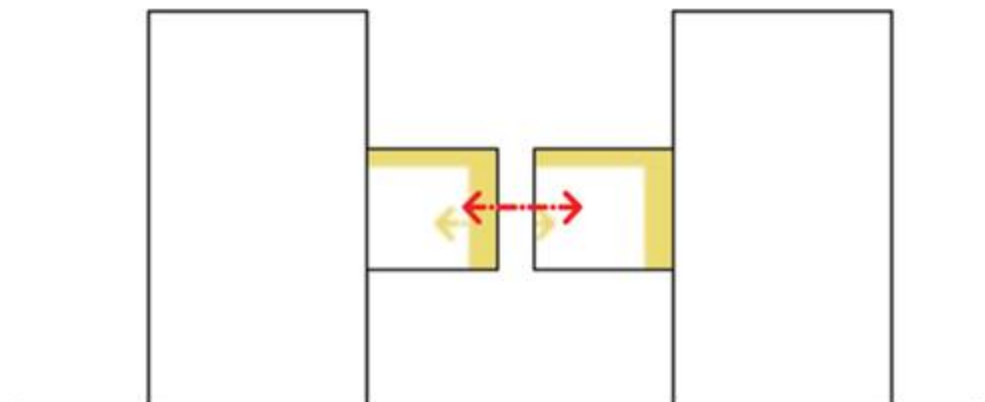


Superposition of Cumba with cumba

Repositioning cumba from extreme private to extreme public



Superposition of Cumba and Public space

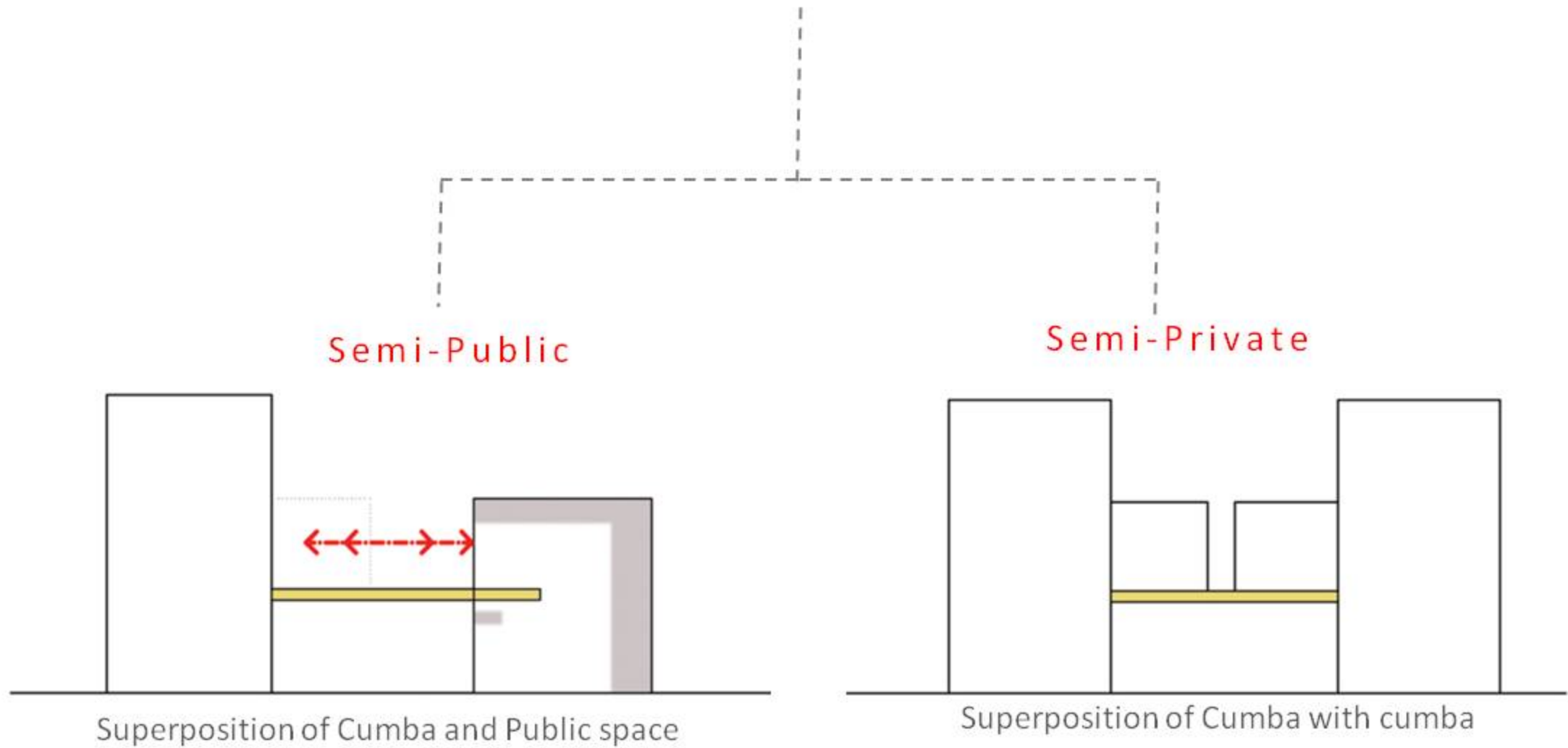


Superposition of Cumba with cumba

Repositioning cumba from extreme private to extreme public

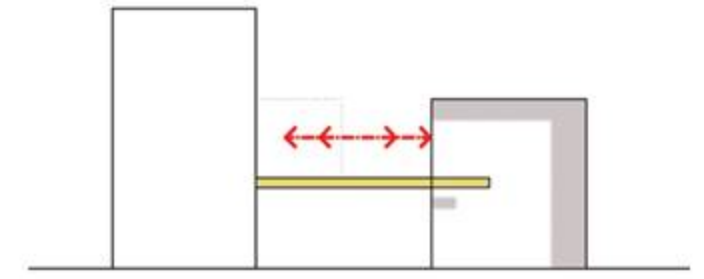
What point does a thing cease to be shared and become PUBLIC?

Creation of hybrid spaces with a sequence between private and public spaces.



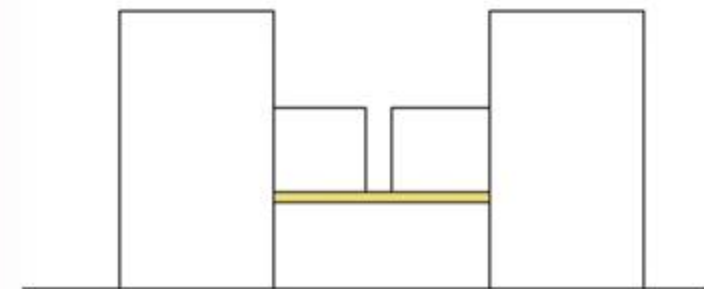
WHAT IF TRADITIONAL CUMBA OVERLAPS
WITH PUBLIC SPACE OR PRIVATE SPACE.
HOW DOES URBAN CONTEXT REACT?

Semi-Public

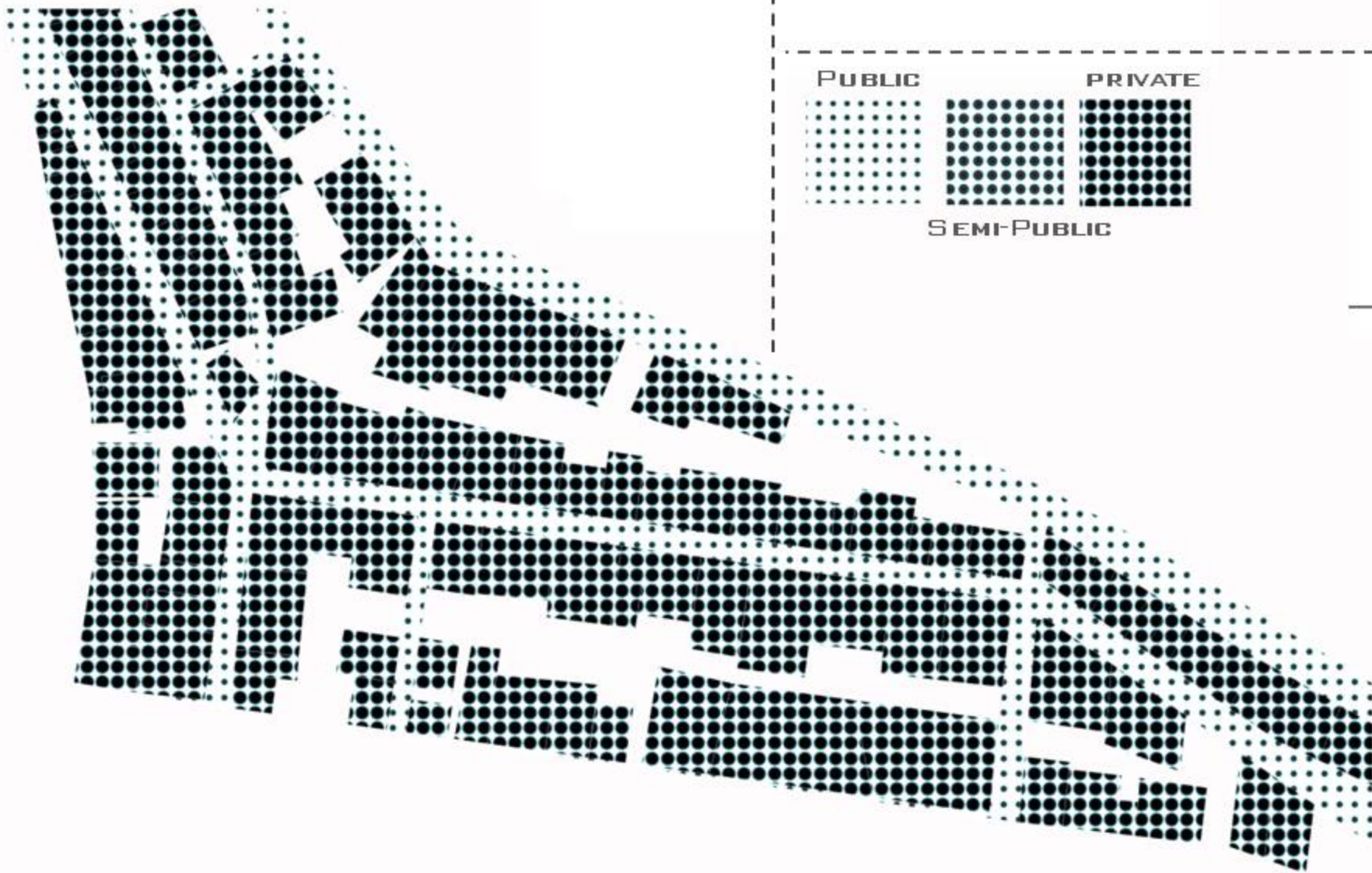
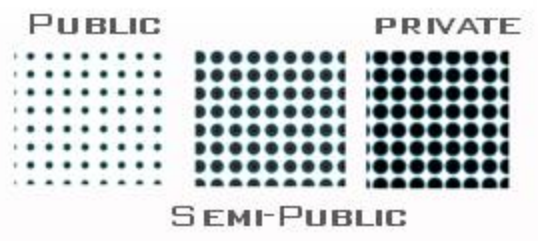


Superposition of Cumba and Public space

Semi-Private



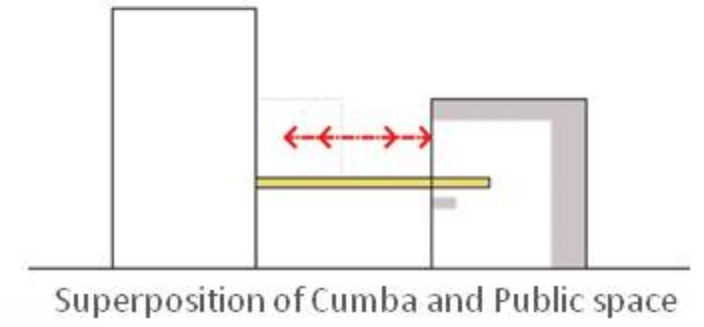
Superposition of Cumba with cumba



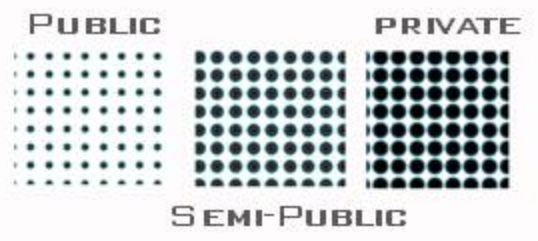
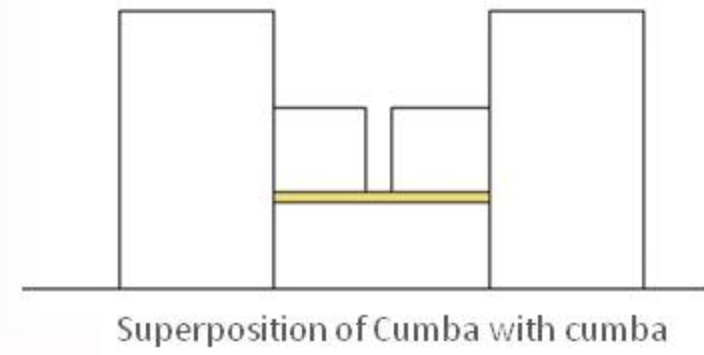
EXISTING SITE CONDITIONS

TRANSFORMATION OF THE PUBLIC SPACE OF THE NEIGHBORHOOD THROUGH THE INCORPORATION OF SUPERPOSITION OF PRIVATE AND PUBLIC SPACE.

Semi-Public



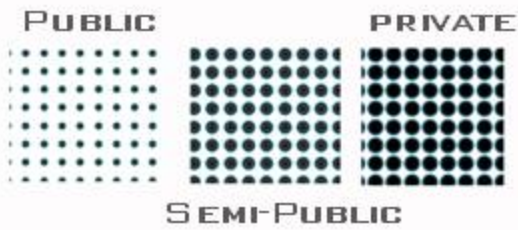
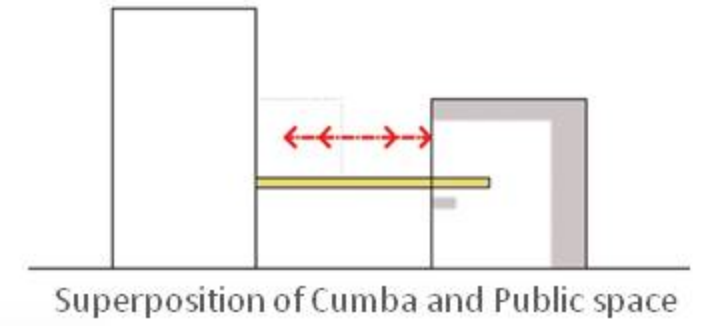
Semi-Private



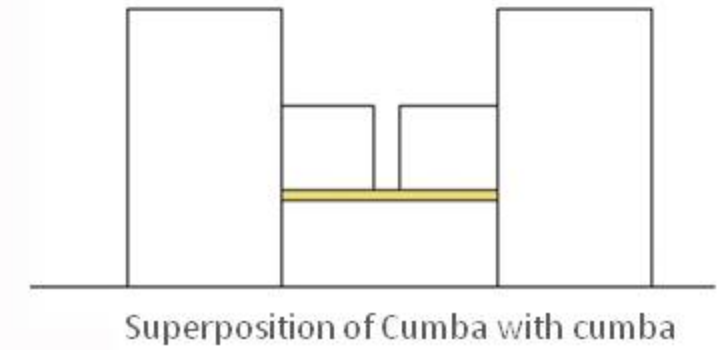
NEW SITE CONDITIONS

RE-URBANIZATION
CREATING A SEQUENCE BETWEEN PRIVATE
AND PUBLIC USES IN ORDER TO CREATE
HYBRID SPACES.

Semi-Public



Semi-Private



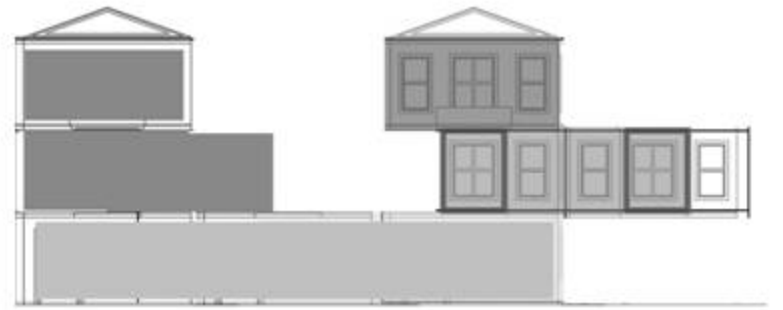
NEW SITE CONDITIONS

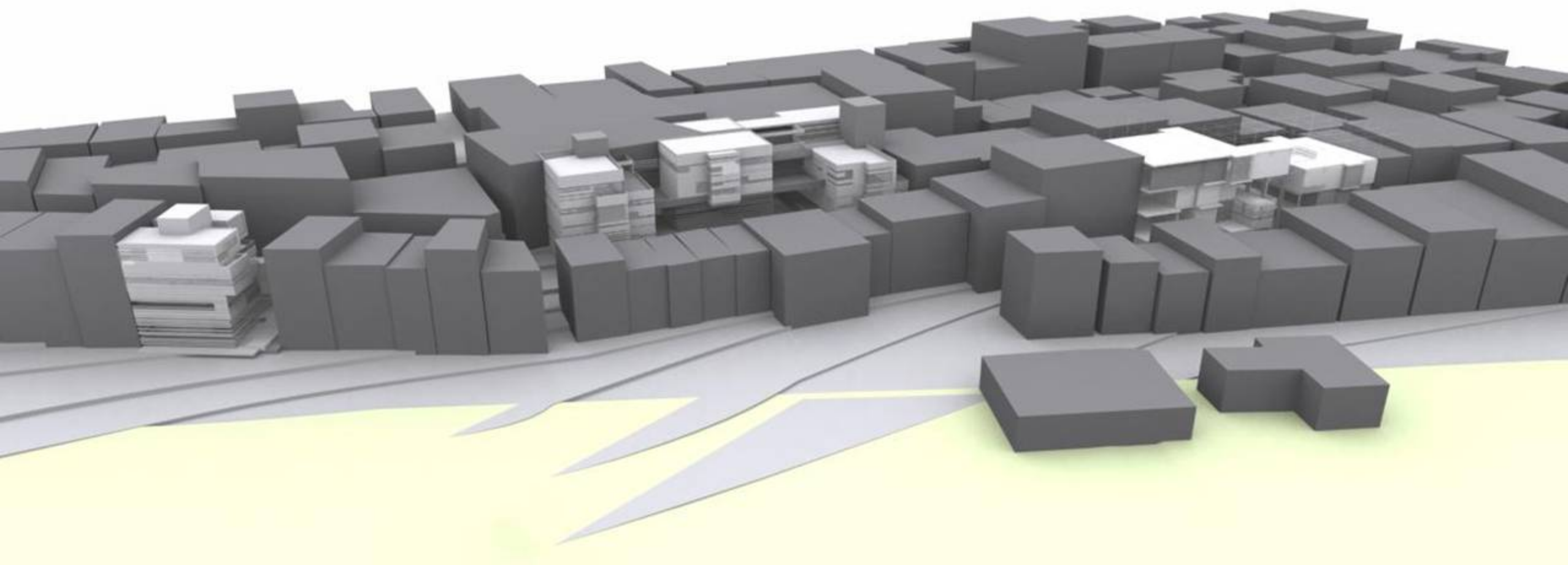


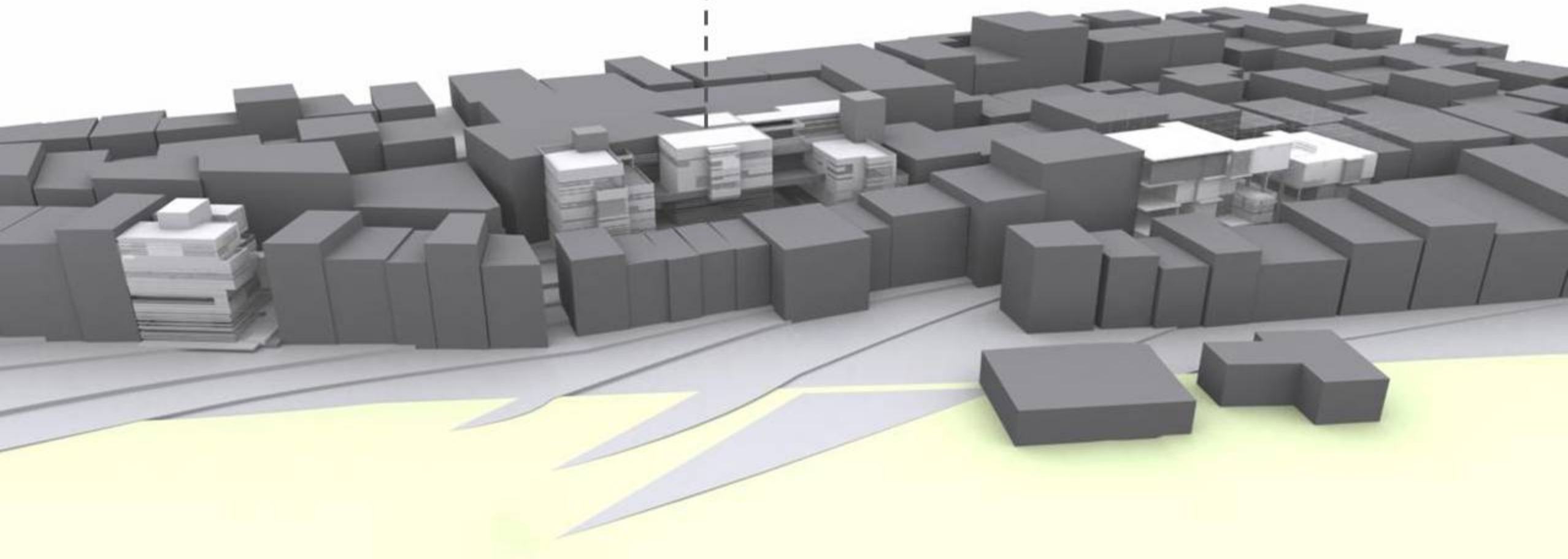
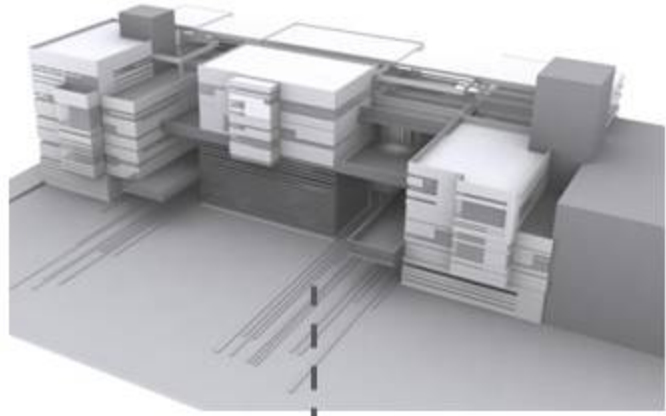
+

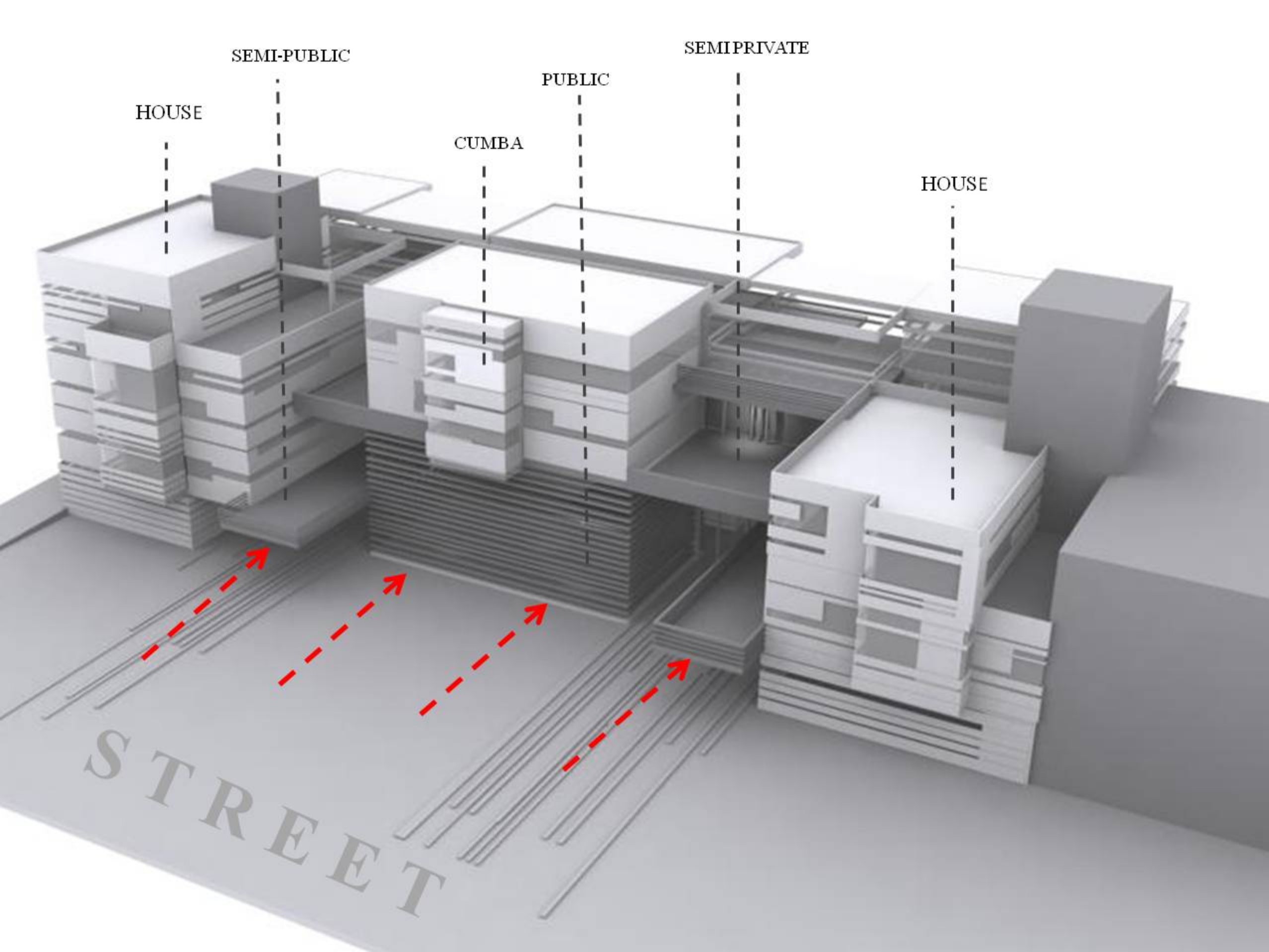


=









SEMI-PUBLIC

SEMIPRIVATE

HOUSE

PUBLIC

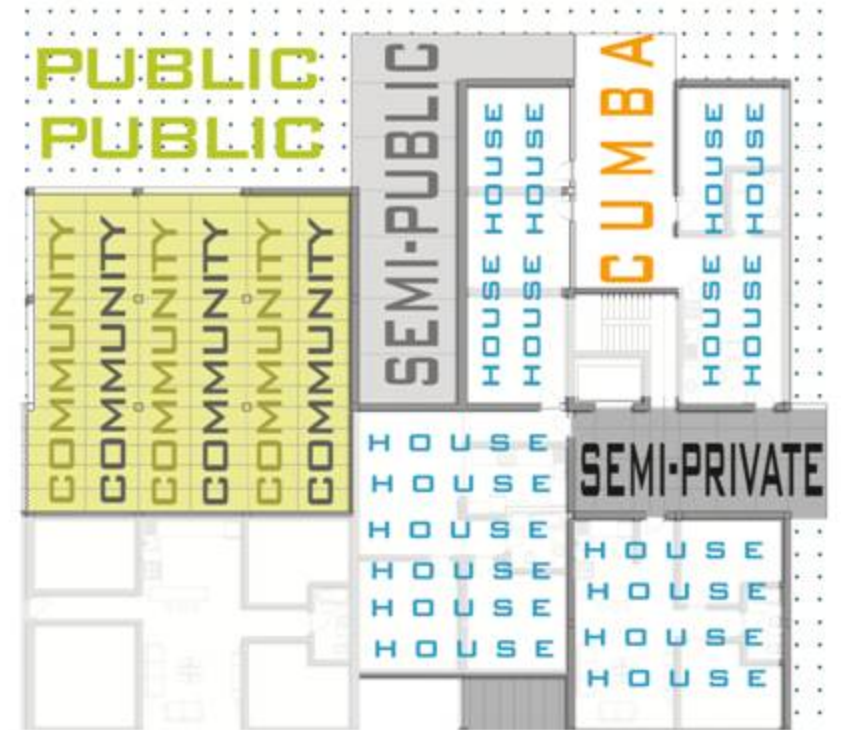
CUMBA

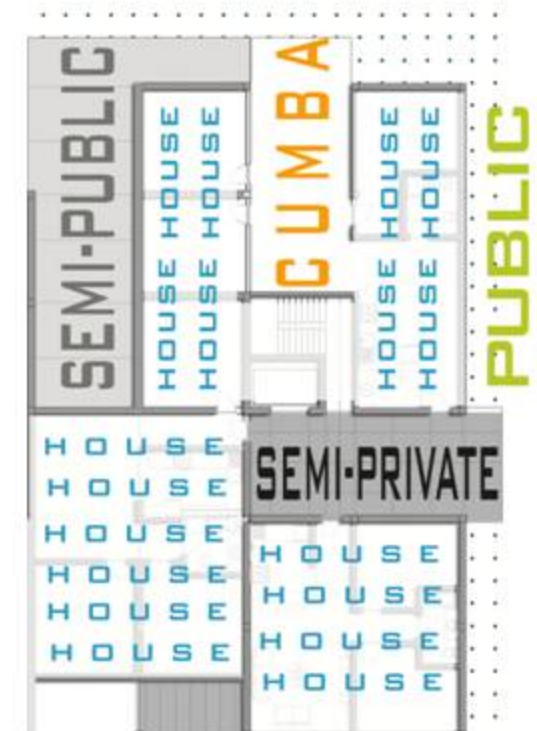
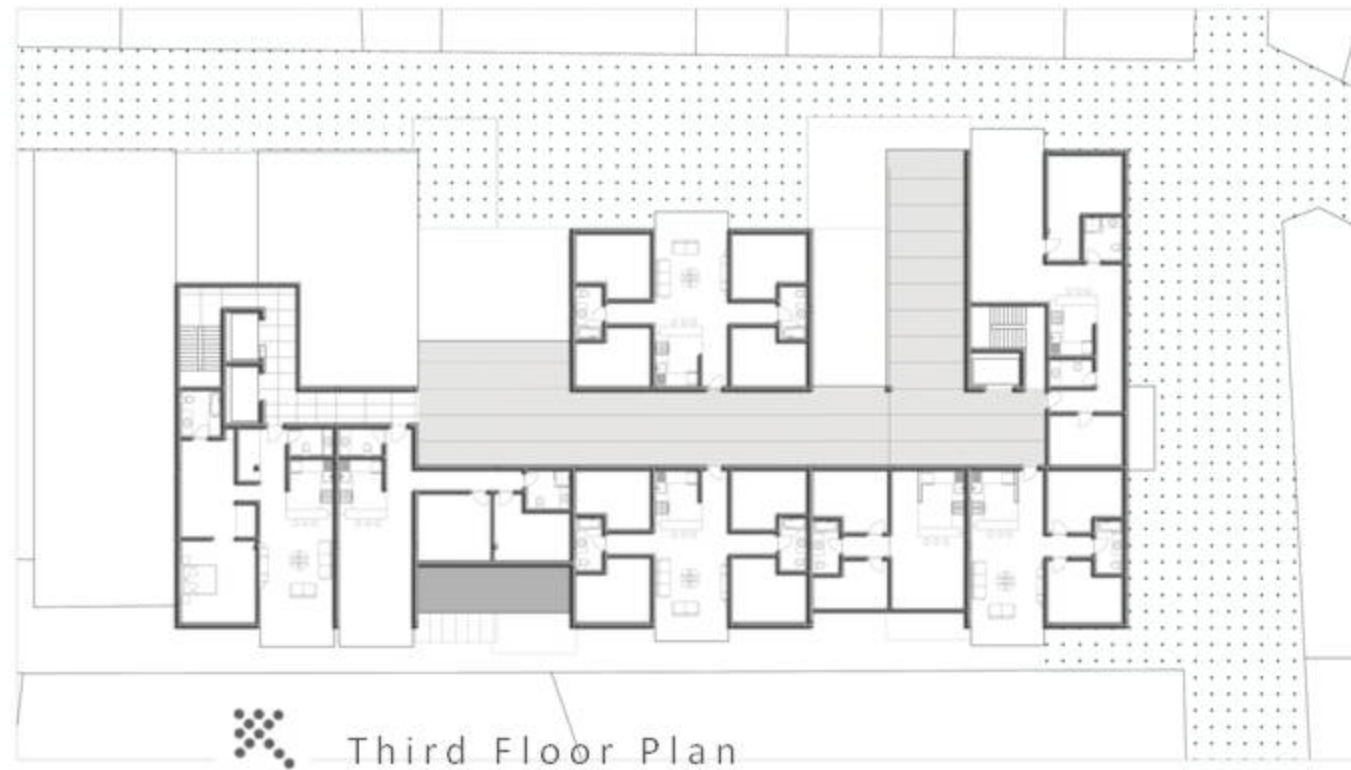
HOUSE

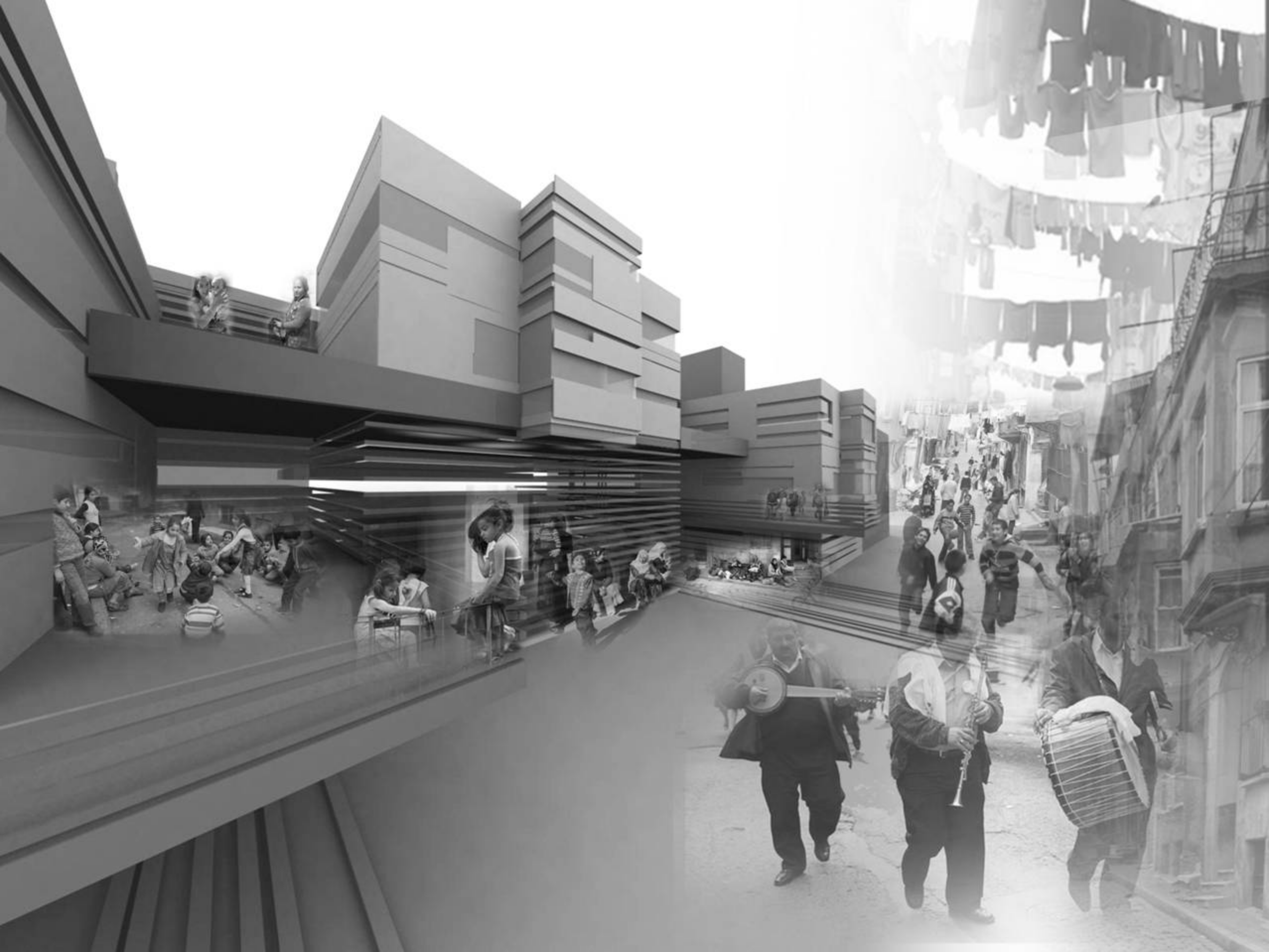
STREET

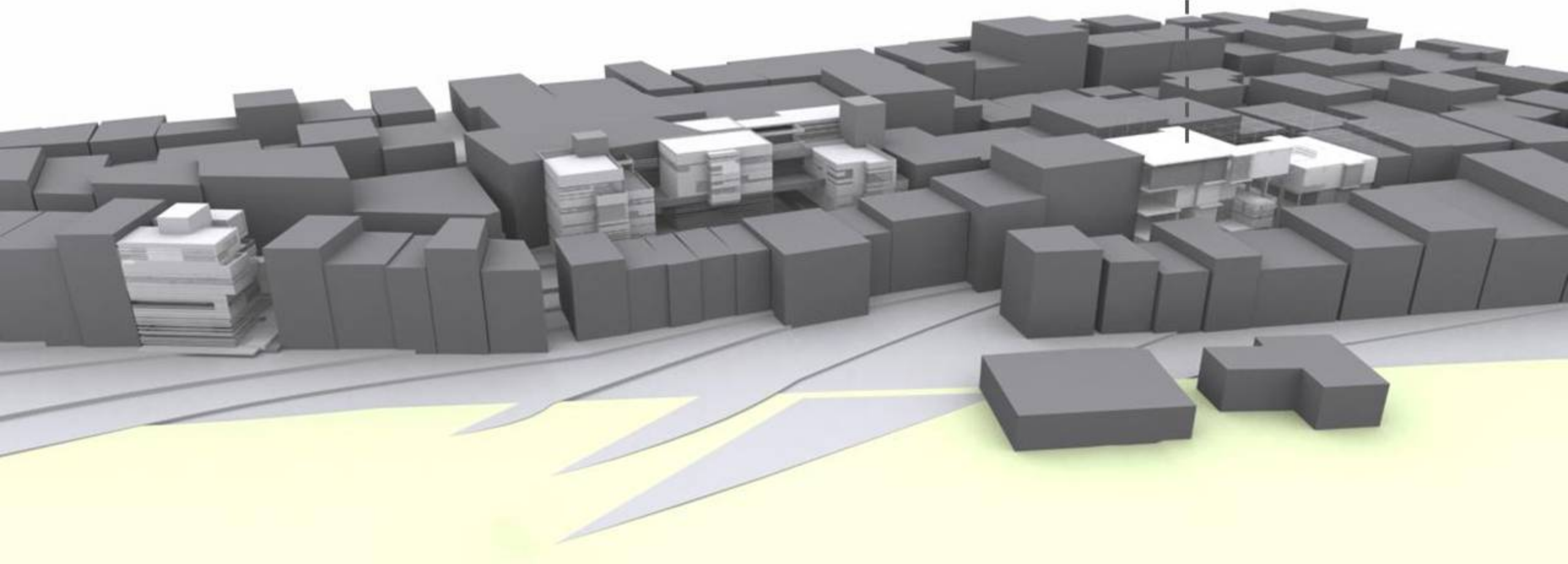
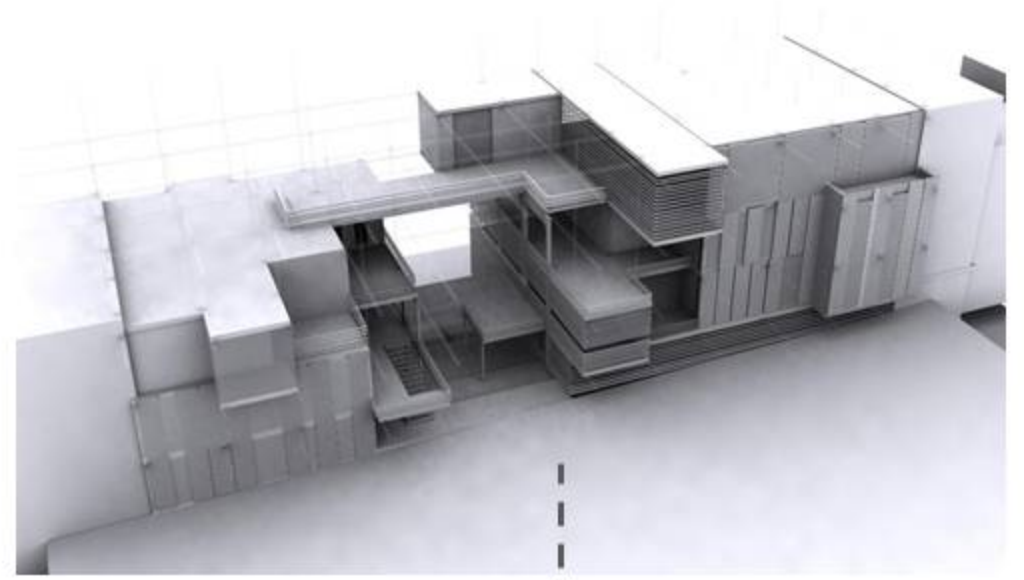


- Community Space
- Semi-Public Area
- Semi-Private Area
- Public Area
- Residential Units







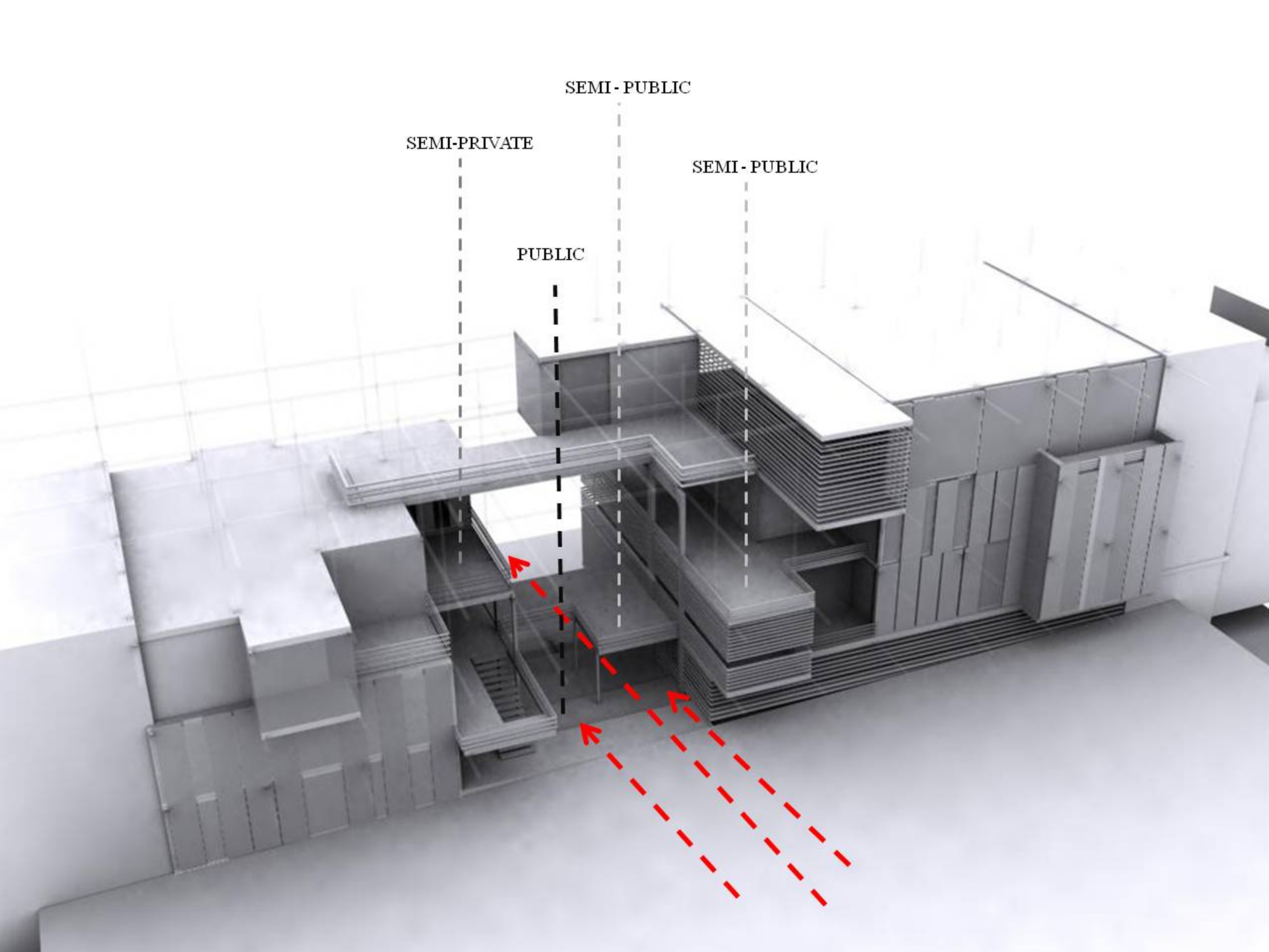


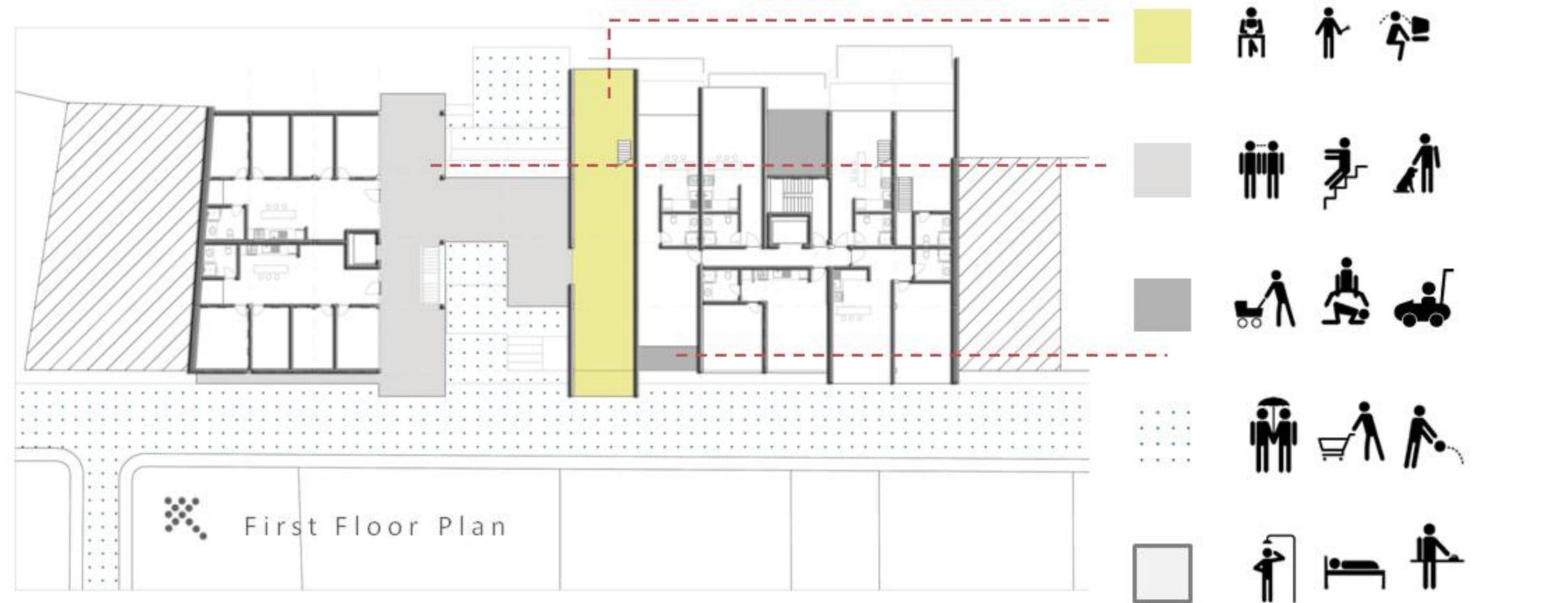
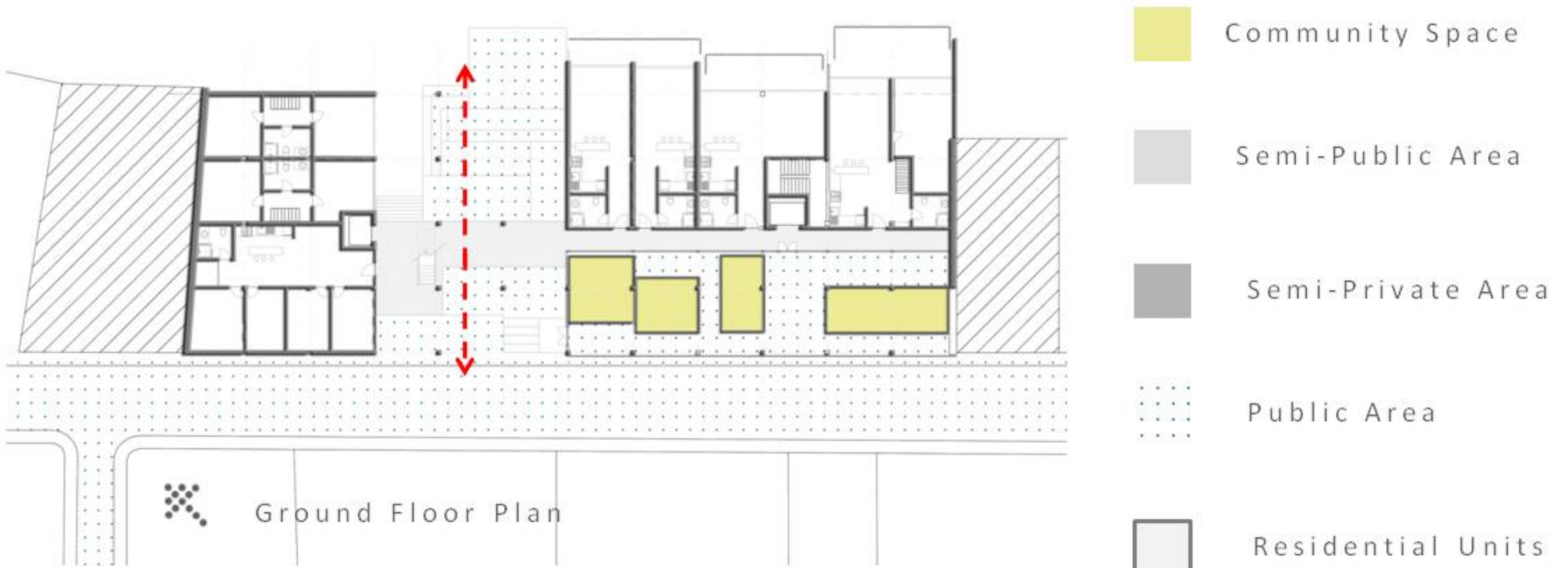
SEMI - PUBLIC

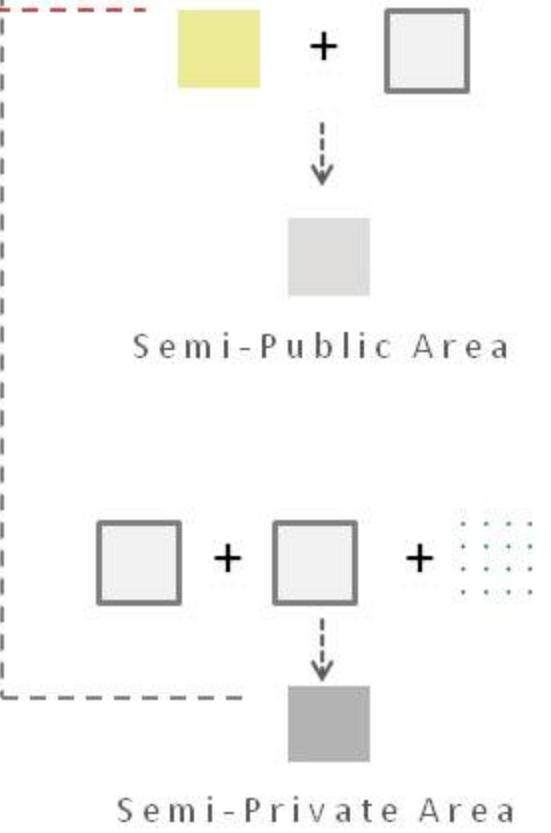
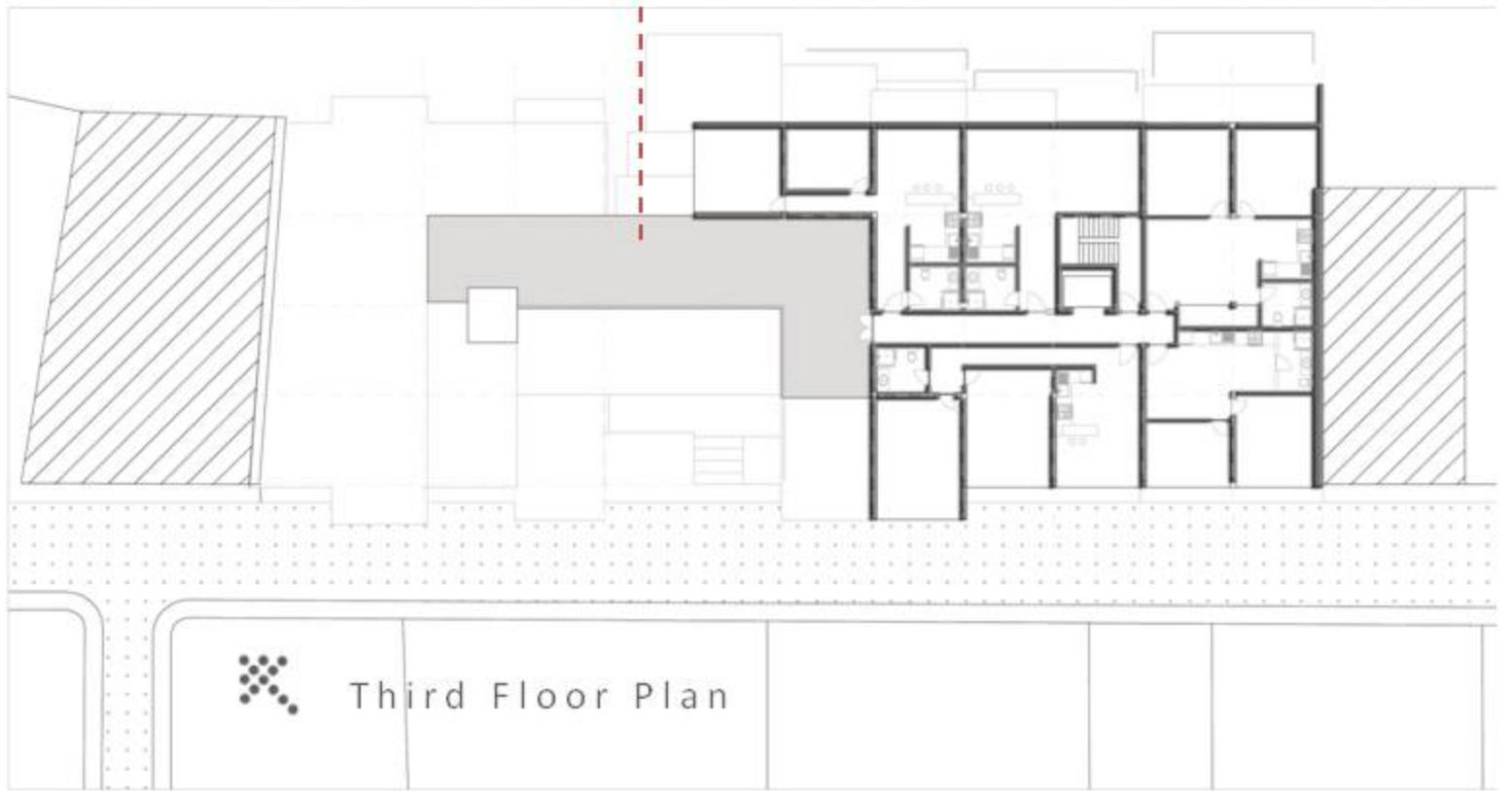
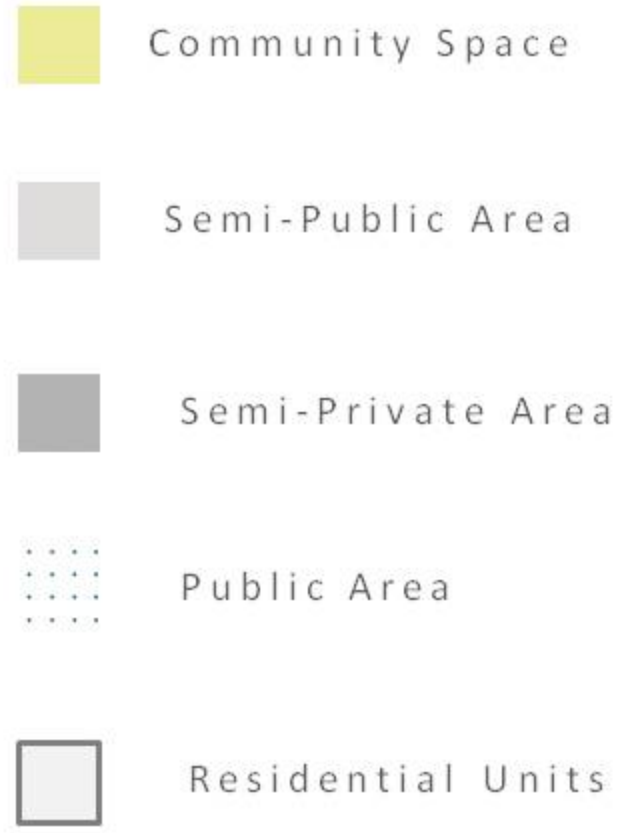
SEMI-PRIVATE

SEMI - PUBLIC

PUBLIC





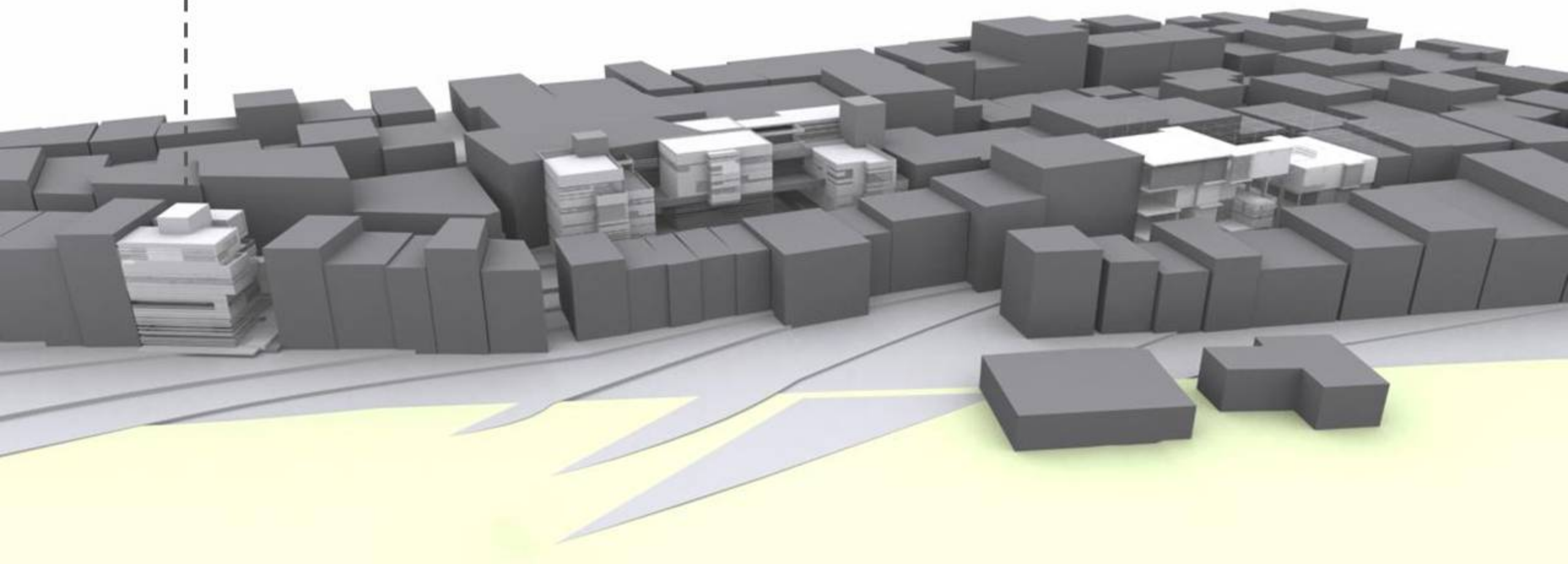
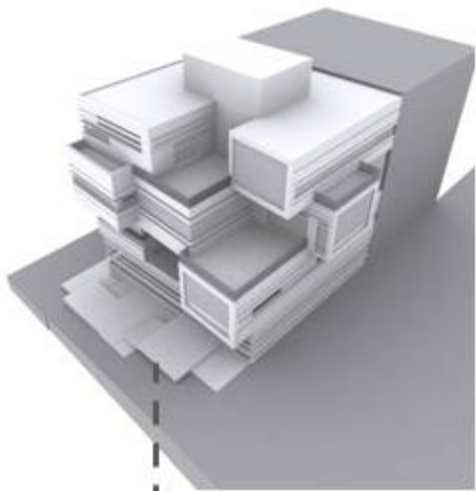


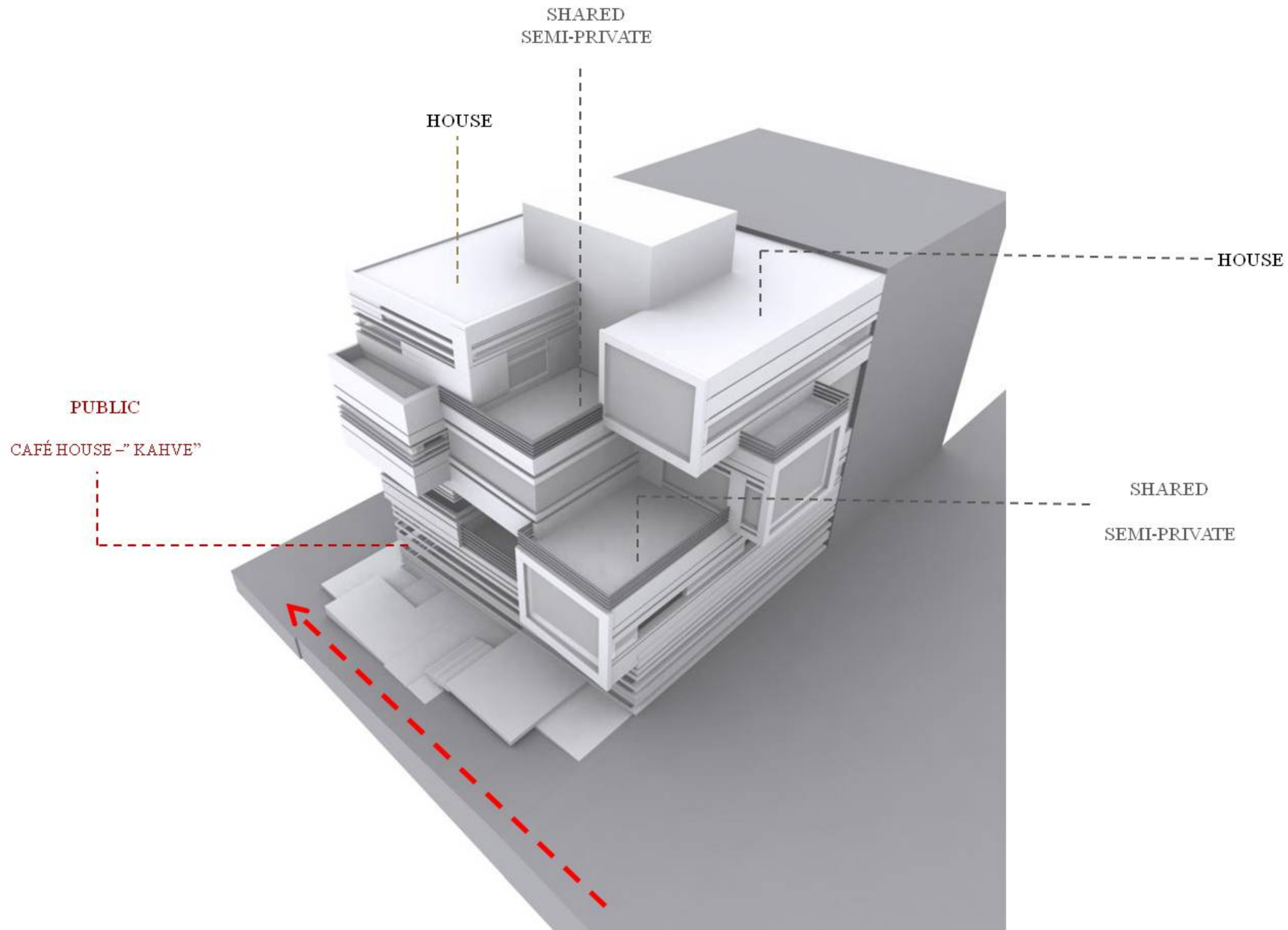


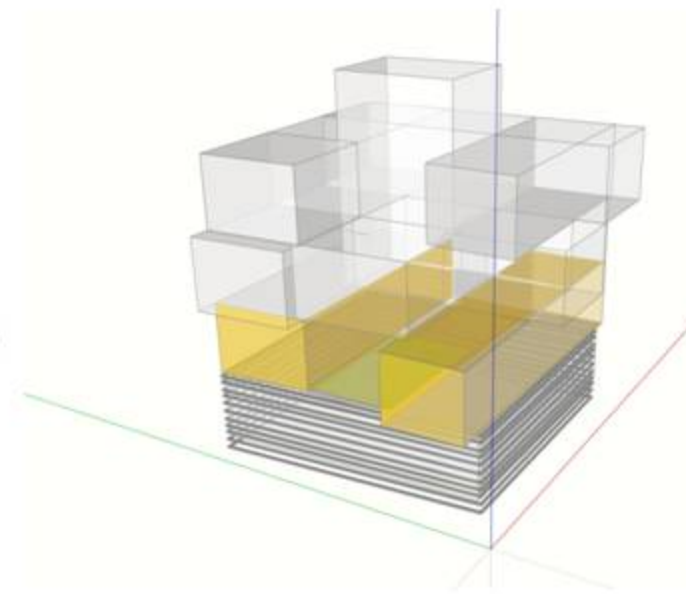
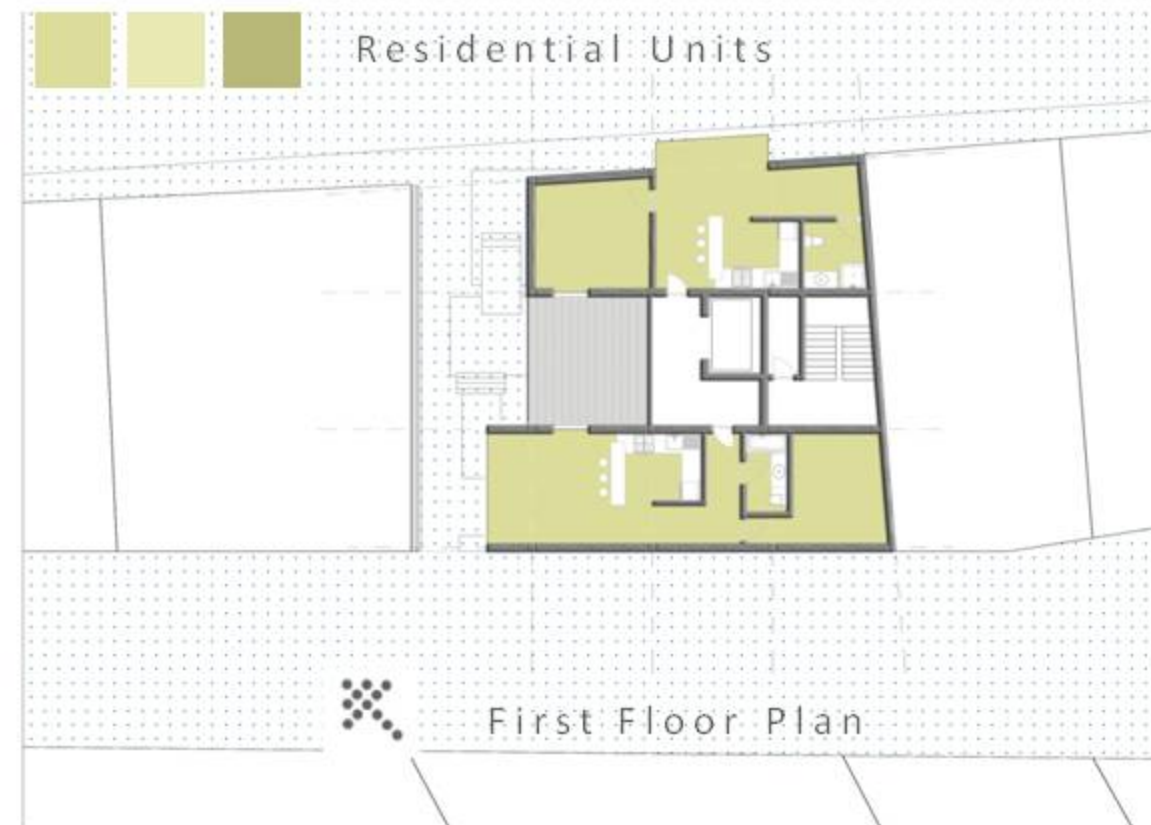
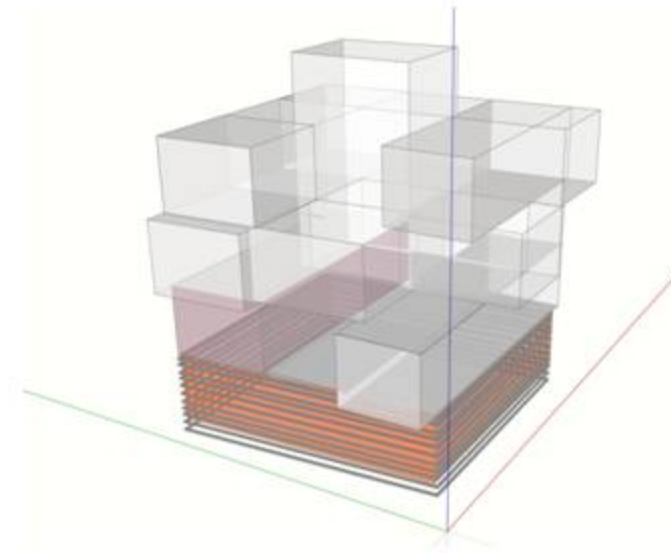
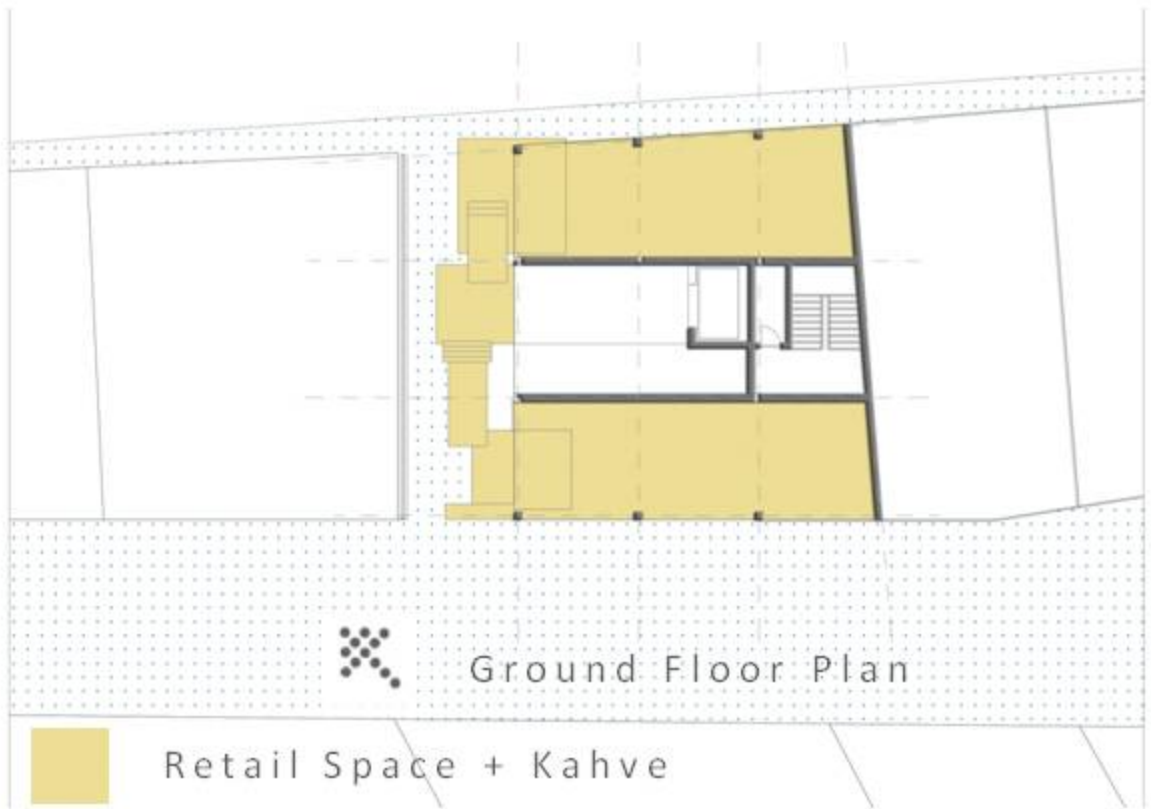
and unfortunately

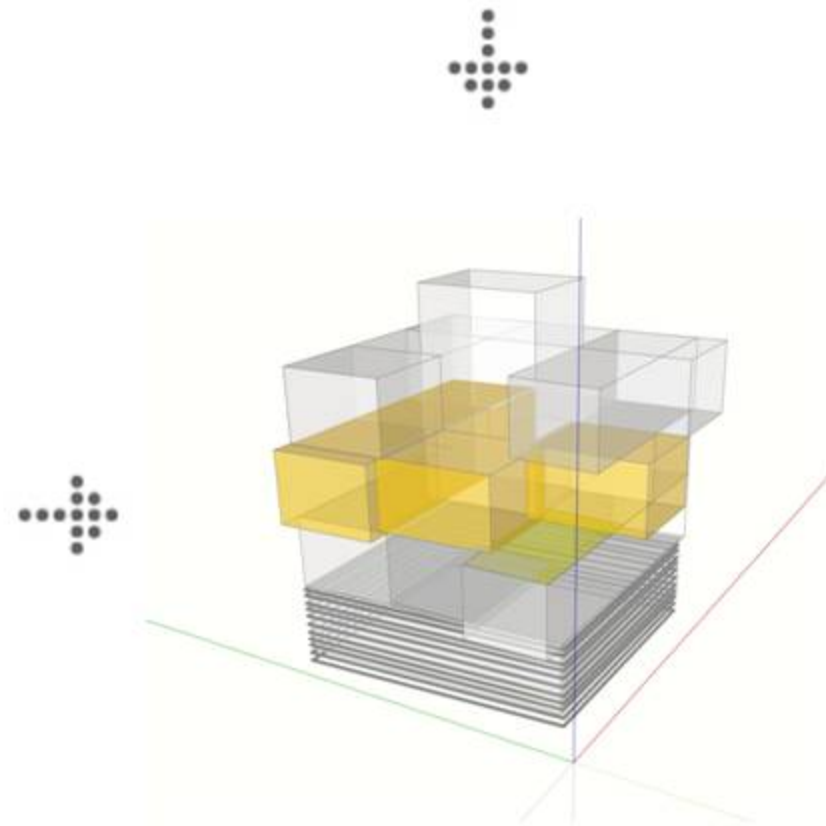
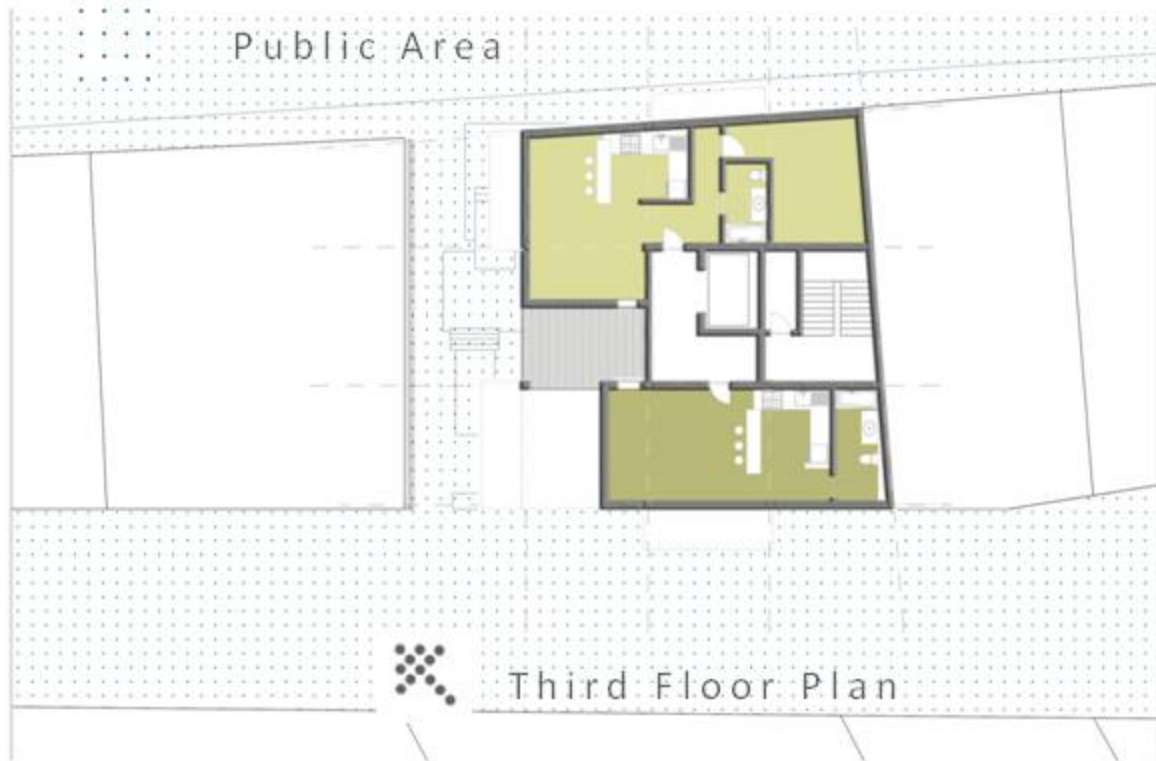
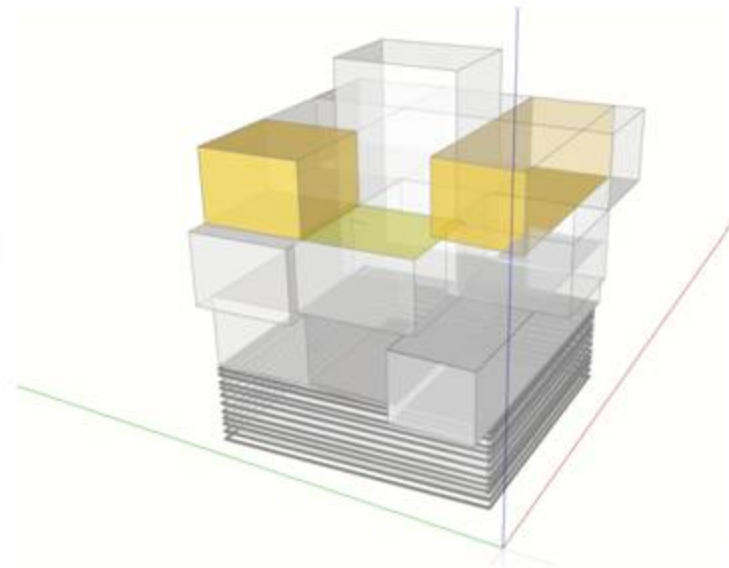
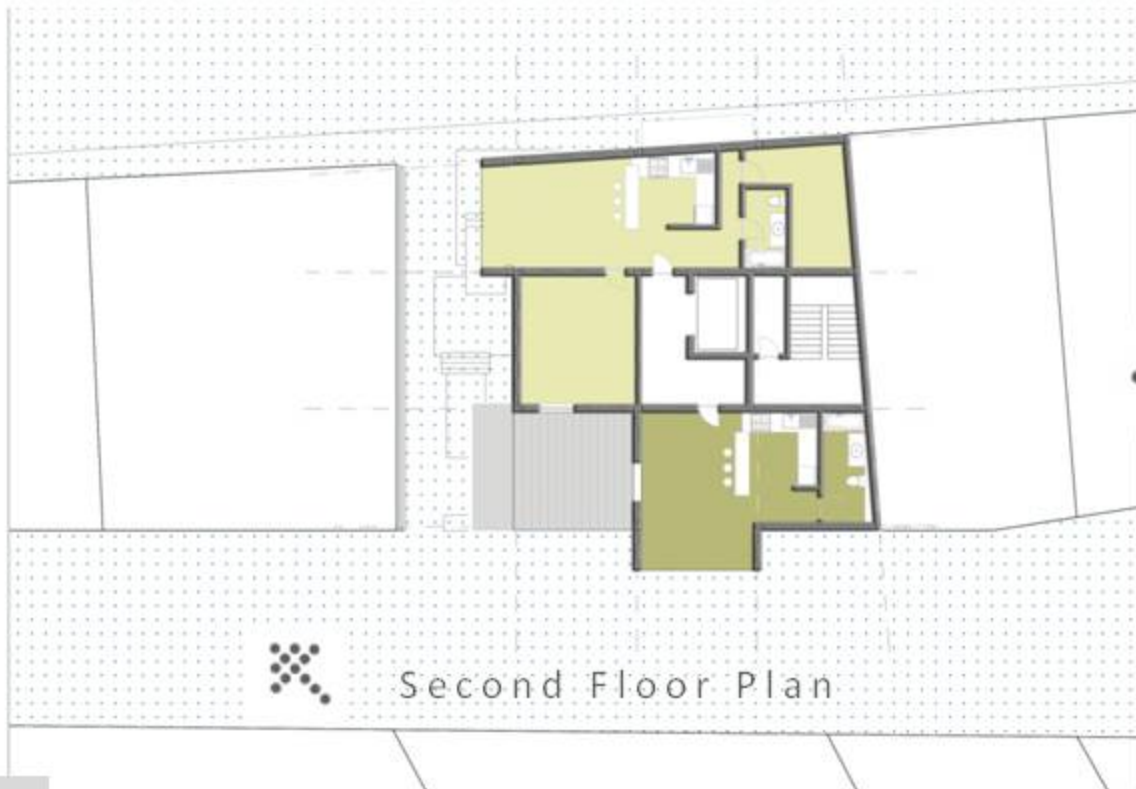
Instead of do

We love our houses.











We thought that it will

