

Abstract


Last semester, IPRO 319 created a web based application for analyzing costs of a warehouse's operations. This semester's goal was to expand on the existing program, add a new RFI/RFP tool, and supply information to make everything more user friendly. The existing Logistics Outsourcing Tool allowed companies to determine cost-effectiveness of outsourcing operations in a given warehouse. This semester more input fields for more valuable information were added to the program based on information provided by our sponsor WERC. Since the product of the program is information to inform the user of possible areas of financial improvement, the Request for Information/Proposal tool then allows the user to take their information one step further and find a solution to their outsourcing needs. As we investigated and completed tasks we realized that what we were creating might be a little complex to use, which is why the FAQ team created a user manual and provided information to make the process overall a little easier.

The Team of IPRO 319

Sponsor:
Warehouse Education and Research Council (WERC) and the Kern Family Foundation

Faculty:
Herb Shields

Students:
Khanh Duong
Uchenna Egwu
Justin Ma
Arthure Mcanally
Kristin Mrozinski
Doug Oh
Nicolay Schwarz
Sarah Stone
Aleksandar Sudar
Hee Jeoung Yu
Arthur Zavala





Programming Team

The team evaluated the existing program from last semester's work, added more fields for the user, and helped develop web based forms for the RFI/RFP team.

FAQ Team

The team took the existing mathematical model and produced a set of instructions, key term definitions, and questions the user might have to help them use the tools.





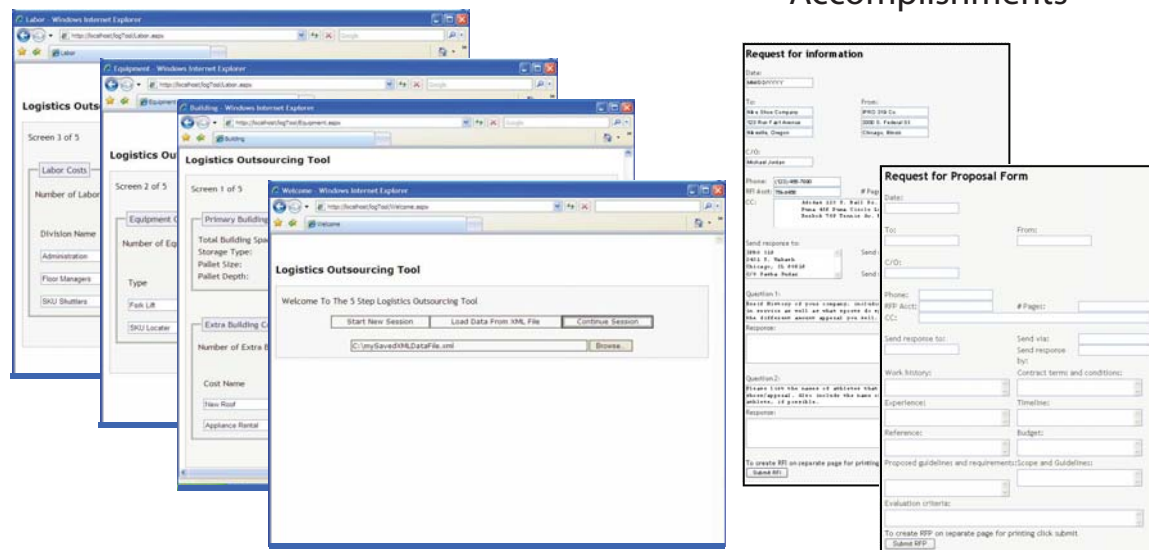
RFI/RFP Tool Development Team

The team researched and developed how warehouses might use request for proposals and information tools and applied it to a web based application available to all.

Obstacles

The main obstacle for the new semester was catching up with the amount of information and research that was completed last semester to be able to move the project forward. Once we established where we wanted to go with the project, we divided ourselves into three main sub-teams: the programming team, the FAQ team, and the RFI/RFP team. Even then, we had trouble coordinating the process of how the sub-teams would move forward since each of them were reliant on the progress of the other. The FAQ team wasn't able to create an instruction manual until the program was understood, the RFI/RFP team needed the programming knowledge to make their tool a reality, all while the programming team needed to improve on the old model. In the end, with much communication, the common goal was met and the Warehouse Logistics Tool came to life.

Accomplishments



- Mathematical Model
- Web-Based Application
- RFI/RFP

Inputs

Outputs

