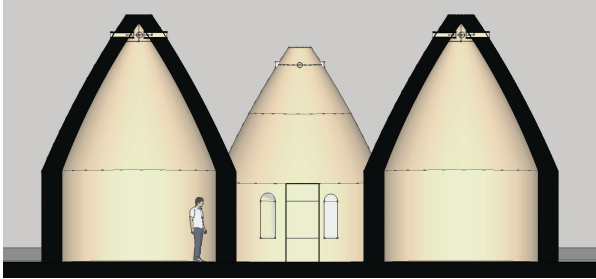


## Goal

To develop an economically sustainable solution to improve the quality of life in a community of Ugandan Coffee Farmers.



The solution will limit the existing processing defects, and allow the farmers to increase their income, without becoming dependant on external aid.

## Acknowledgements

Jennifer Keplinger  
Jacob Elster  
Terry Frigo  
IIT

## Objectives

Learn the methods and techniques of earthbag construction.

Develop documentation to provide farmers so they can apply earthbag technology

Travel to Uganda in June 2011

## Accomplishments

Full scale model of earthbag wall and dome.

Set of illustrated instructions for construction

Site preparation documents

## Future Agenda

Develop additional phase for the coffee banda facility.

Monitor the progress of the first banda and the effectiveness of the prepared documentation.

## Building Communities

Through Coffee

# IPRO 333



## Team Members

Sponsor: Crop to Cup

Ryan Bloom  
Laurel Campbell  
Emily Esko  
Cory Knapp  
Becca Waterloo  
Mark Swingler  
Nicolas Sanchez  
Jeremy Levin  
Mathilde Gatepin  
Dia Chatterjee  
Stacy Economy

Prof. Steve Beck  
Prof. Mark Snyder

