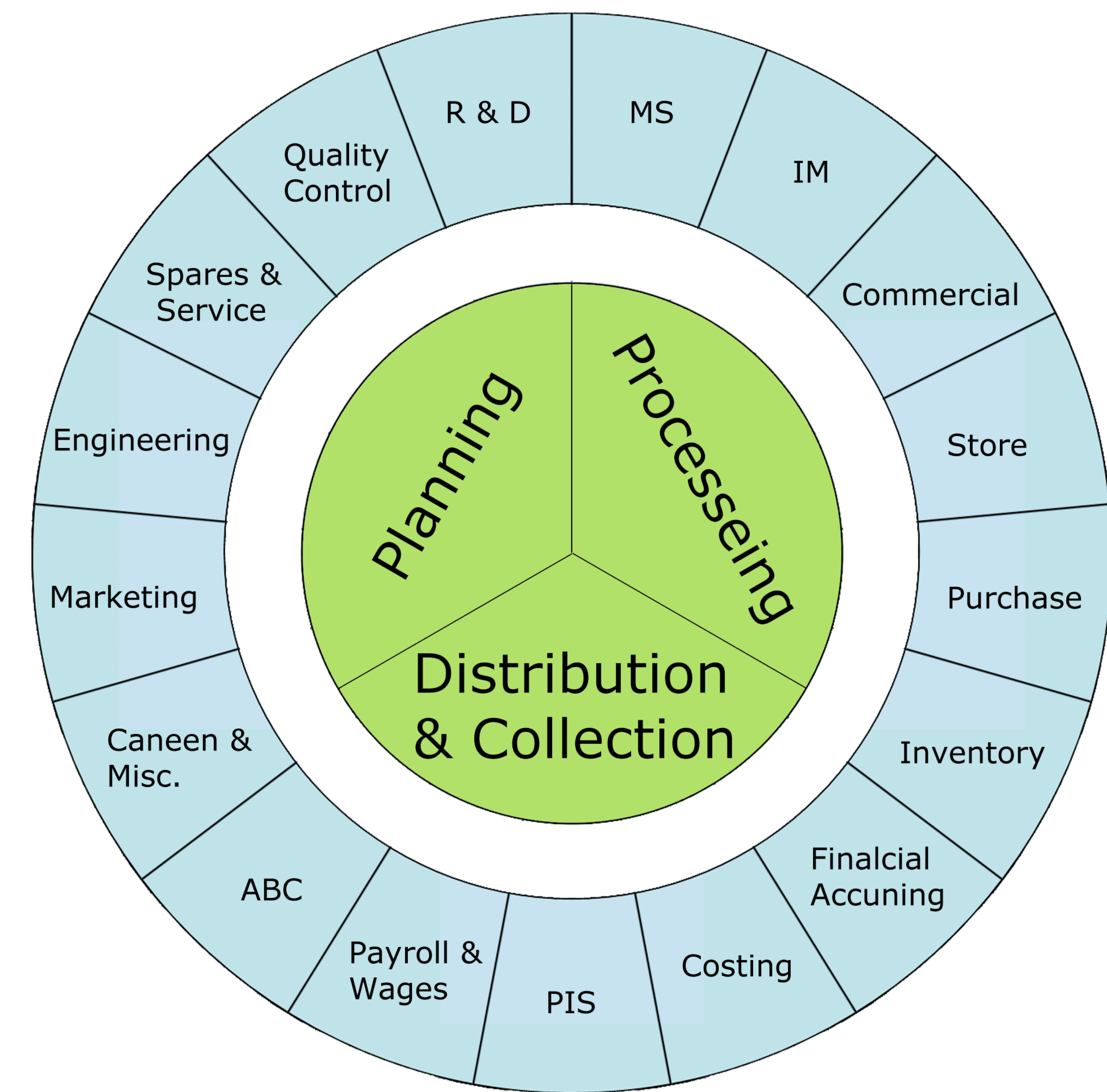
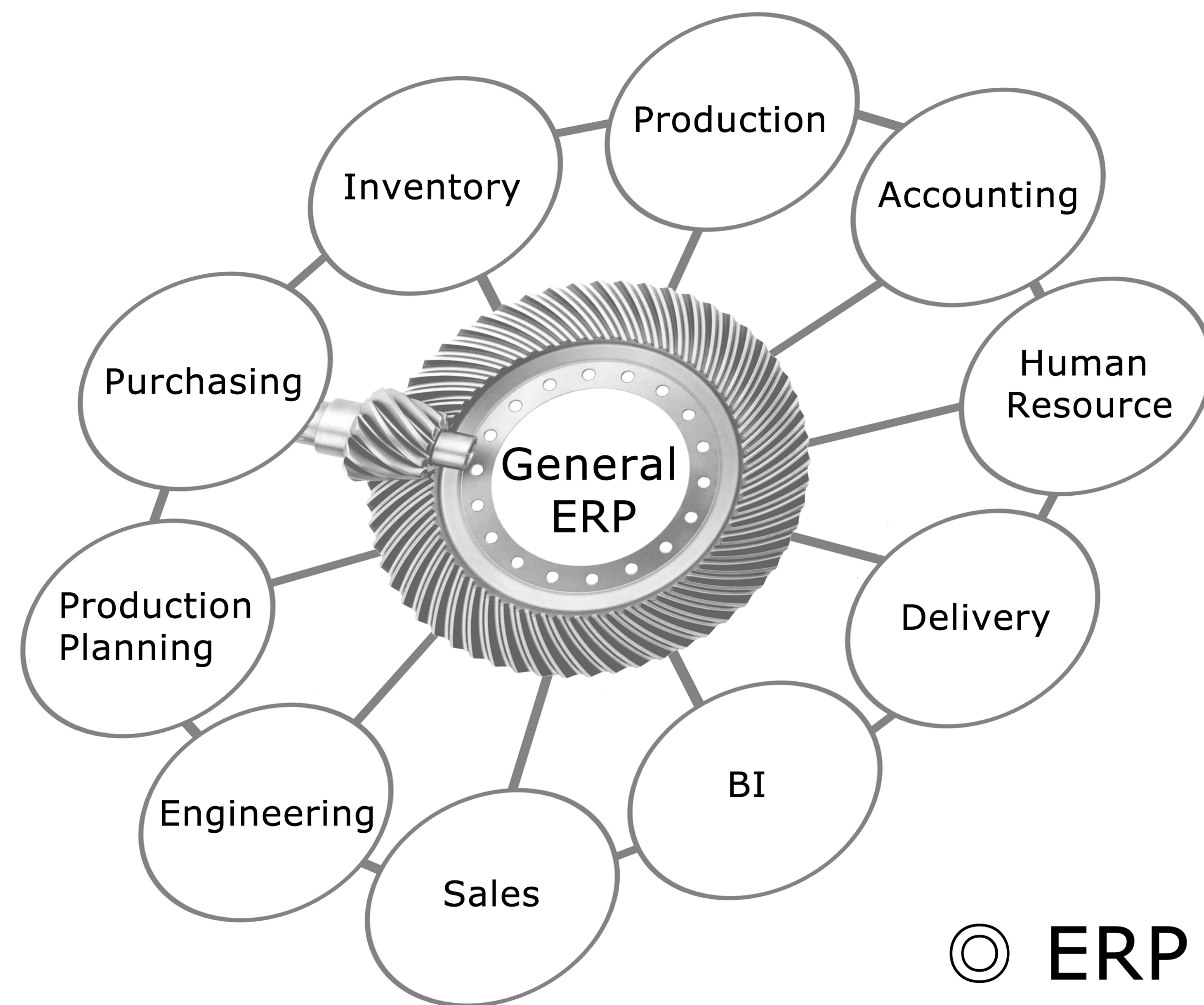


IPRO 320 S07

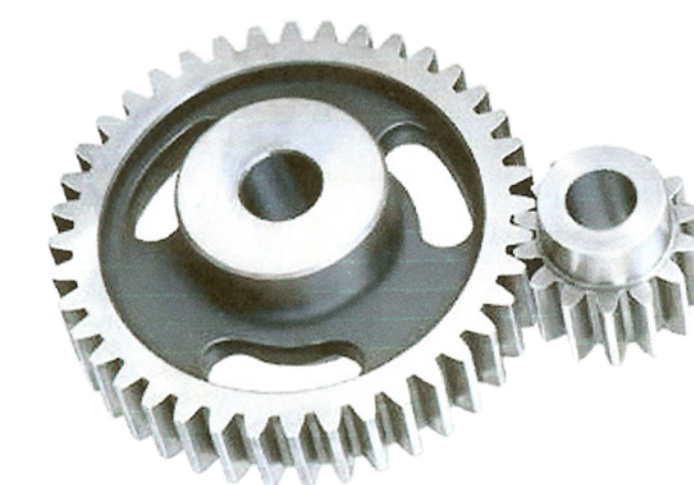


Planning the implementation of a New ERP software platform

© What is ERP?

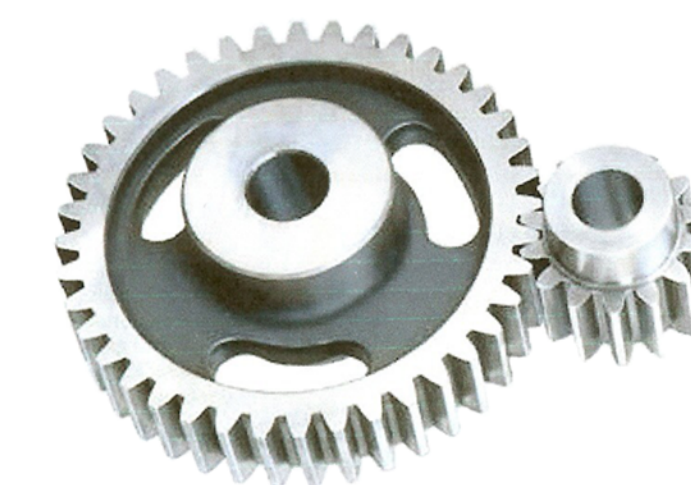


© ERP Implementation



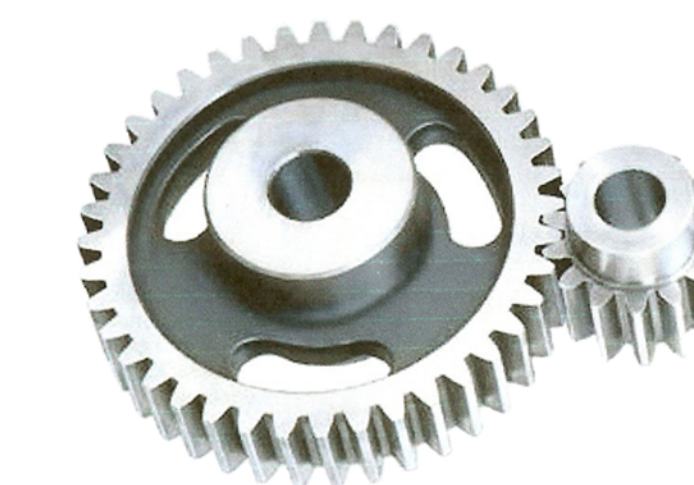
Consulting

Responsible for initial ERP implementation and subsequent delivery of work



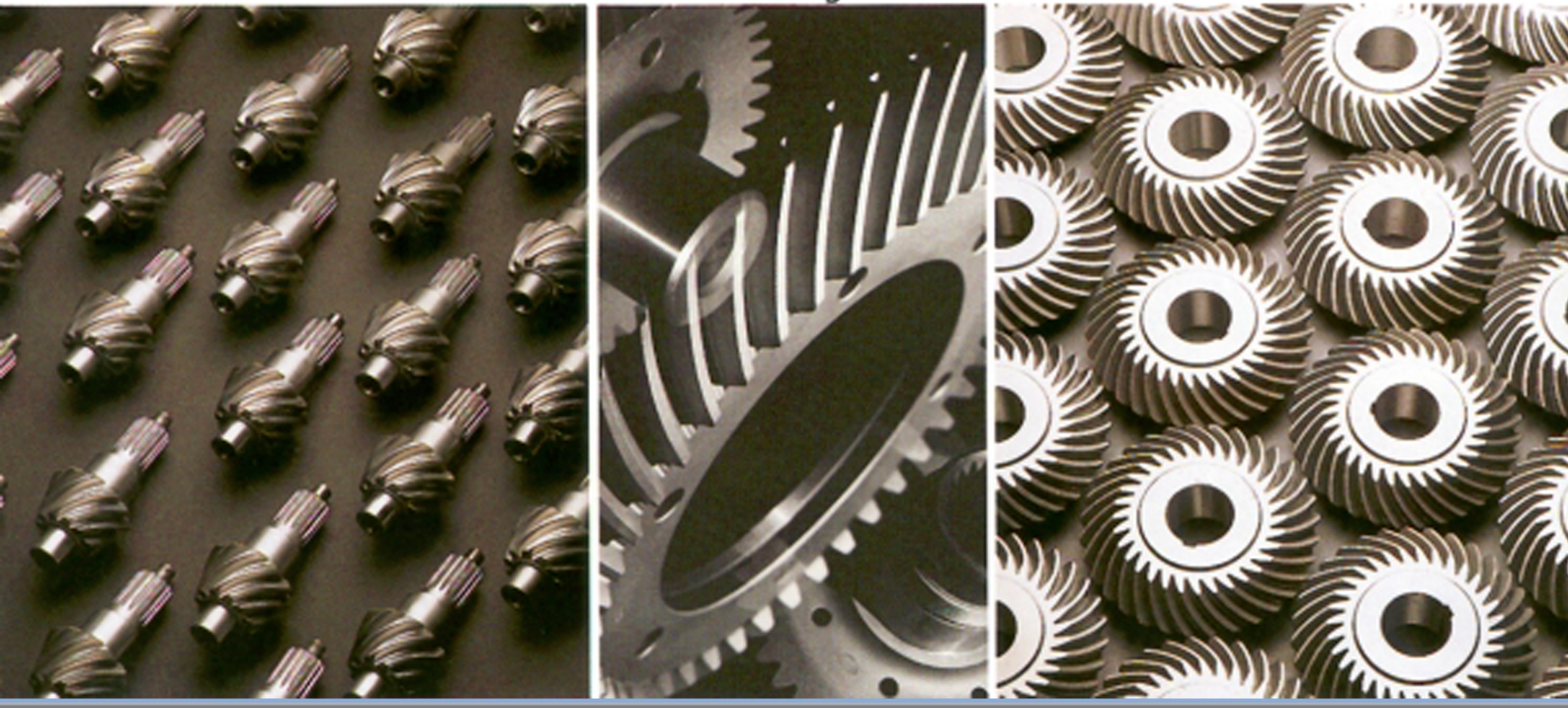
Customization

Process of extending or changing how the system works by writing new user interfaces

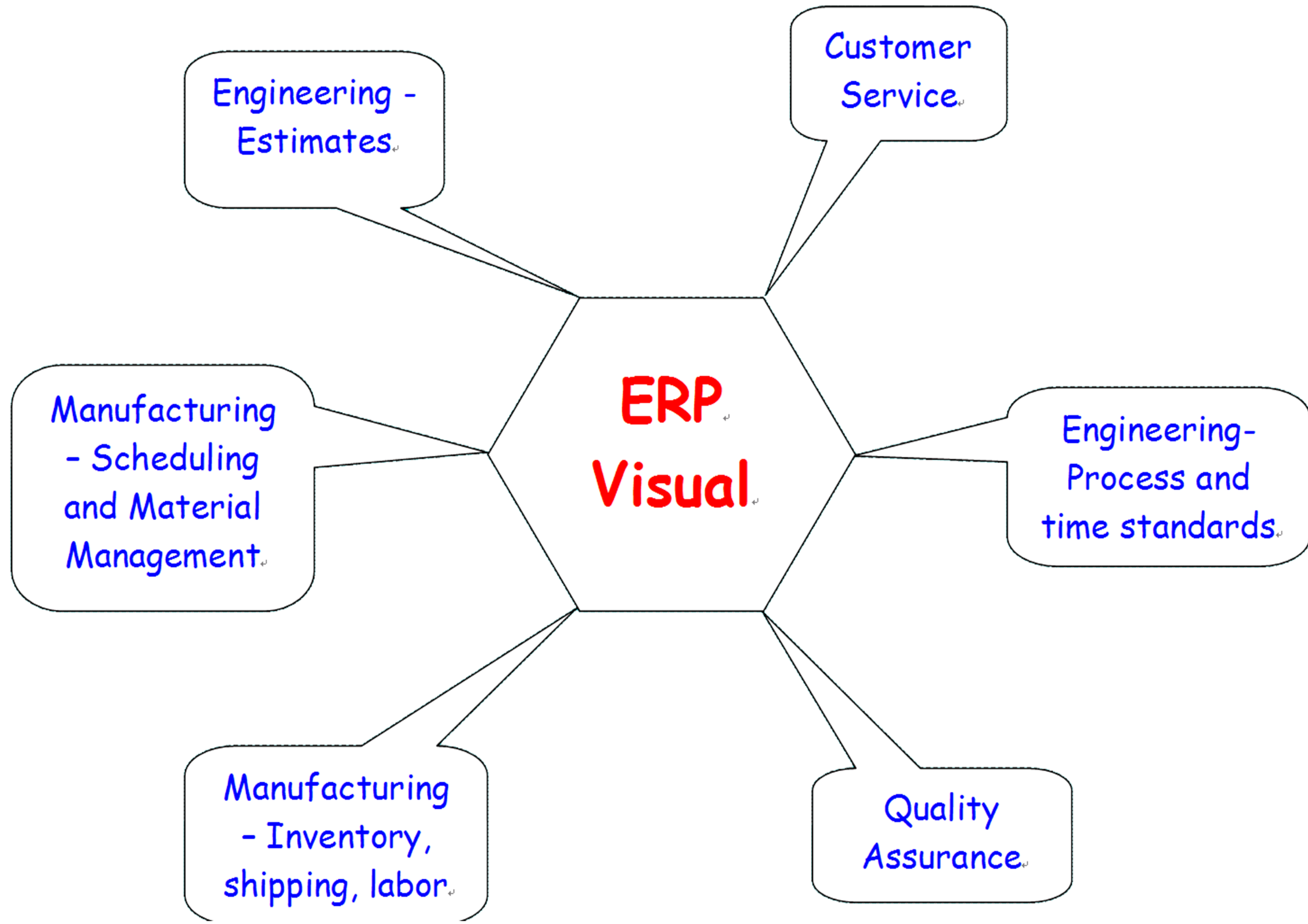
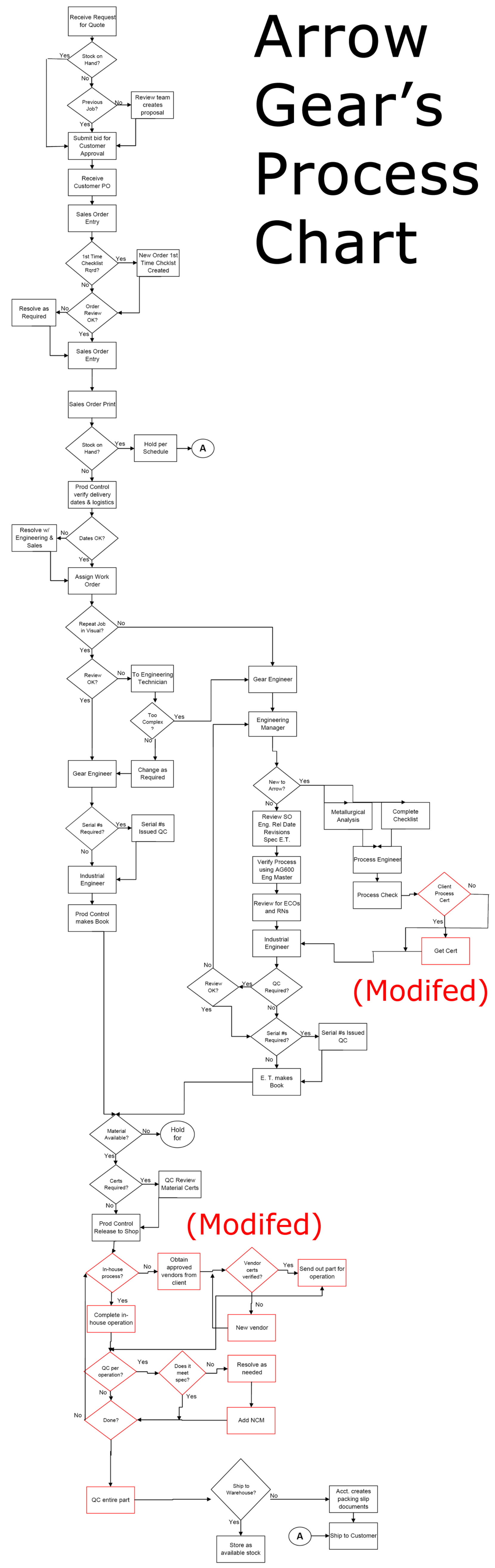


Support

Next phase of consulting to keep the ERP software running in an optimal way



Arrow Gear's Process Chart



Methodology

- ⇒ Seven Visits to Arrow Gear Company
- ⇒ Interviews with managers of different departments
- ⇒ Test the Visual Infor ERP software version 6.3.8
- ⇒ Attend training sessions Visual Infor ERP software 6.5.2
- ⇒ Learned the tutorial for Visual Infor ERP software 6.5.2
- ⇒ Identified several issues in Visual Infor ERP software & interviews

Some major issues

- ⇒ Inefficient interfaces within Visual ERP system
- ⇒ Lack of communication between modules of the software
- ⇒ Lack of logging events and changes
- ⇒ No estimation times for processes to accurately schedule jobs

Recommendations

- ⇒ Several issues were solved by upgrade
- ⇒ Better Training on software modules
- ⇒ Take into account machine setup time
- ⇒ Check job histories
- ⇒ Compare with previous estimates



- 1 Sourabh Sethi (CE): Process & Time Standards
- 2 Anthony Carfang (CE): Quality Assurance
- 3 Sam Solomon (CE): Shop Floor
- 4 Josef Velten (MMAE): Quality Assurance
- 5 Khoa Le (CE): Customer Service
- 6 Hong-Kwon Kim (INTM): Inventory Management
- 7 Rahul Tayal (CE): Process & Time Standards
- 8 Manu Pushpanath (INTM): Estimates
- 9 Adam Bain (CE): Material Management

