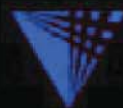


# Explore Your World



NAVTEQ



IPRO 305  
ILLINOIS INSTITUTE OF TECHNOLOGY

# Problem Statement

Establish methods and incentives for crowd sourcing map data



Source: Thermal imaging night vision grant writing tips

# Crowd Sourcing

**Crowd Sourcing:** Outsourcing tasks usually performed by an employee or contractor to a large group or community



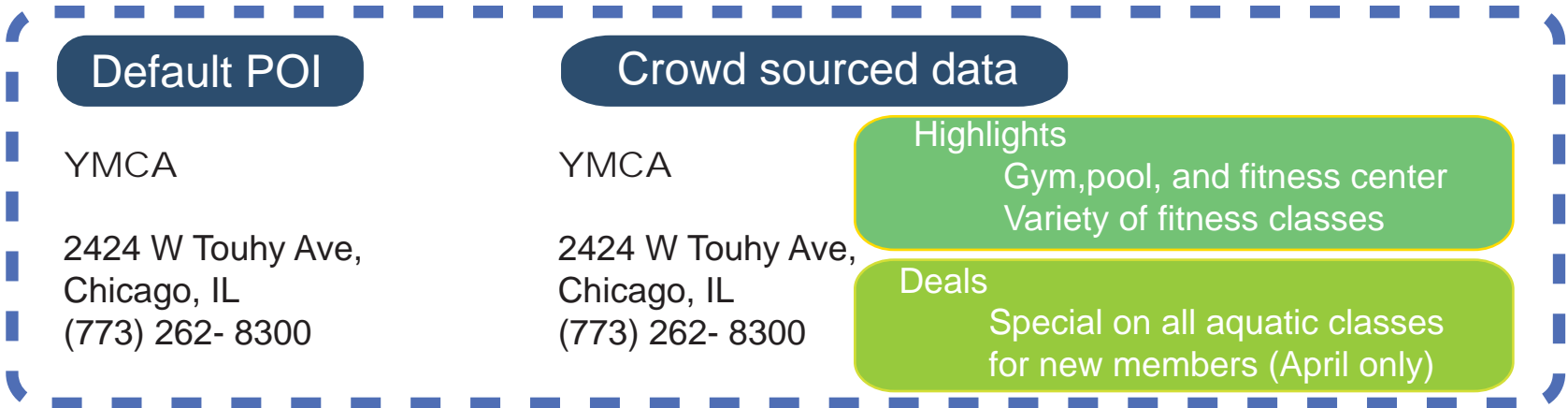
# Explaining the Problem

Man on the street perspective



Local deals and other time sensitive information

Crowd sourced data



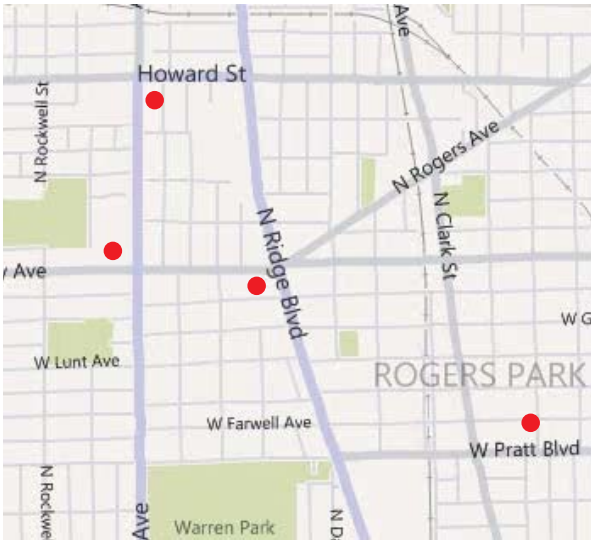
# Goals

Confirm that crowd sourcing can improve information displayed on NAVTEQ's maps

Launch the inaugural for NAVTEQ Community Data Gathering Challenge

Enlist schools in the Chicagoland area to participate

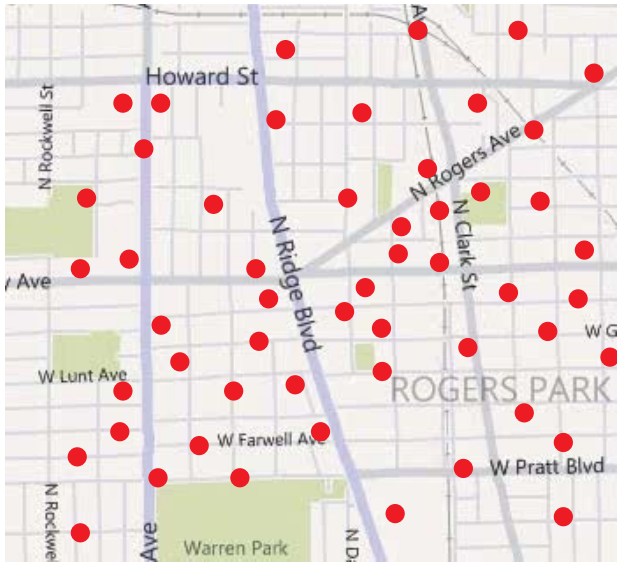
Default data



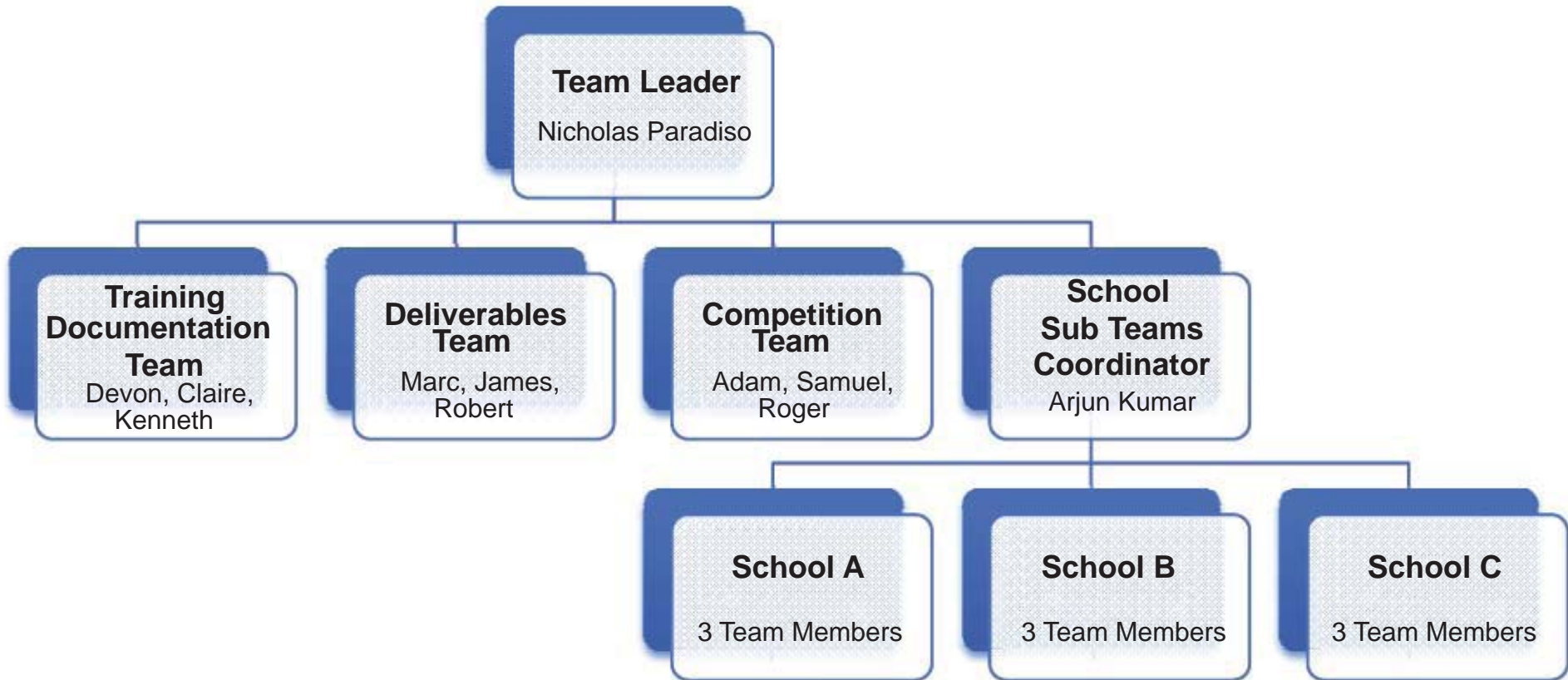

Community Data Gathering Challenge



User created data



# Team Structure



# Progress Towards Goals

Enlist three schools



George Armstrong



Philip Rogers



West Ridge



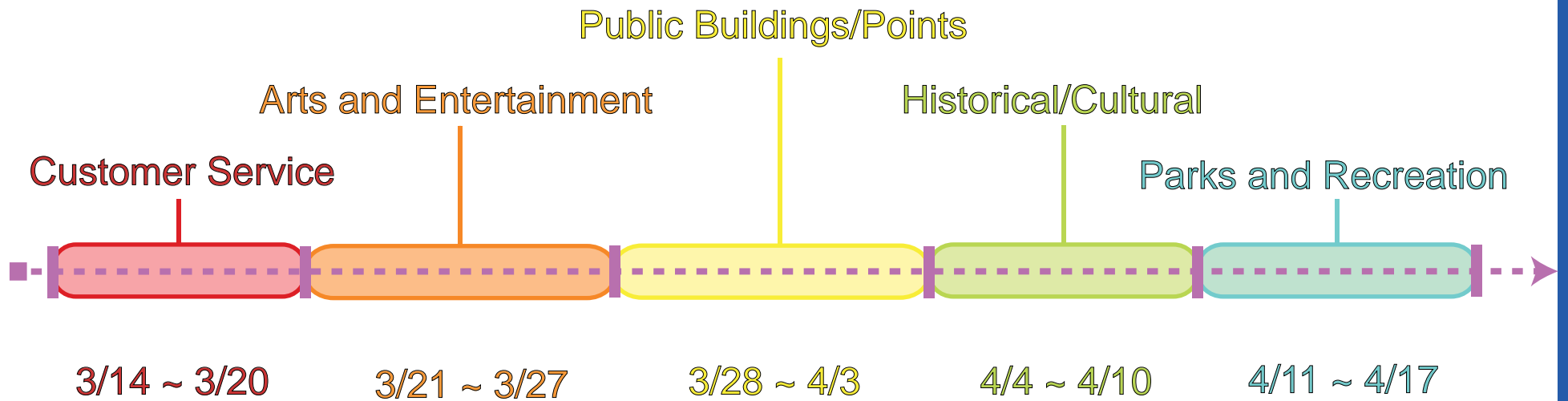
Marketing challenge expansion

Goals



# Progress Towards Goals

Developed inter-school competition data collection schedule





# Progress Towards Goals

Ushahidi: Open source POI and data collection platform



<http://184.73.241.75/ushahidi/main>

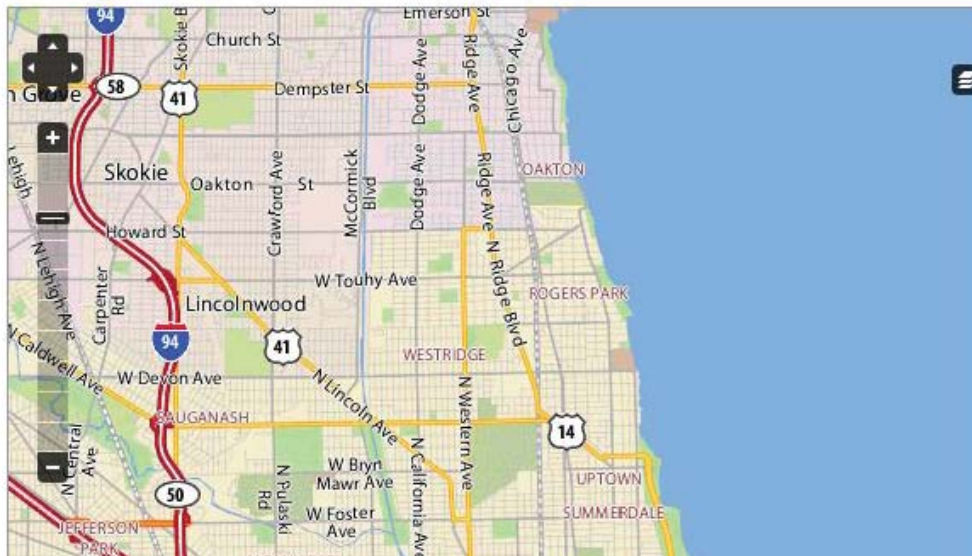
English (US)

**Navteq Community Data Gathering Challenge**  
It's your world, explore it!

HOME REPORTS SUBMIT A REPORT GET ALERTS CONTACT US SITE HELP COMPETITION

FILTERS → **REPORTS** NEWS PICTURES VIDEO ALL

↓ CATEGORY FILTER [HIDE]



ALL CATEGORIES

GEORGE ARMSTRONG

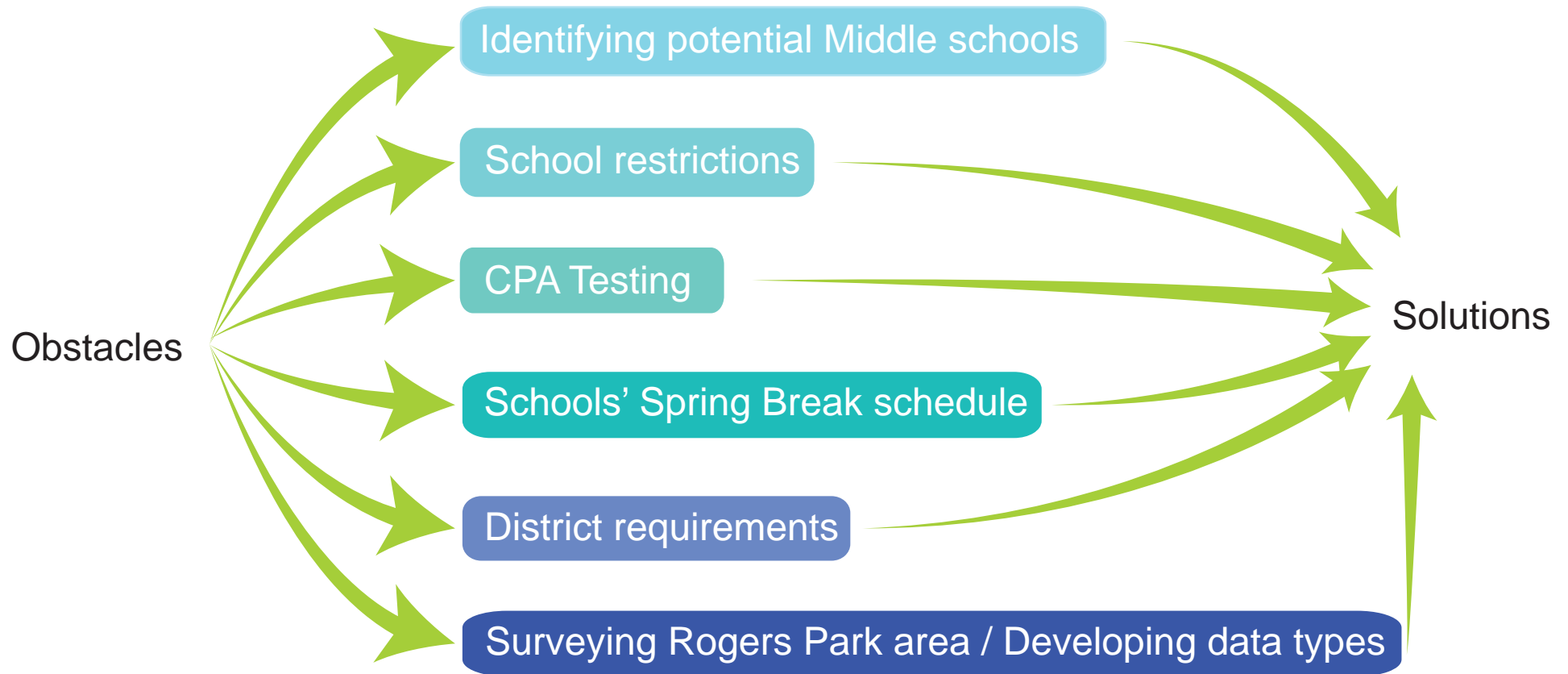
PHILIP ROGERS

WEST RIDGE

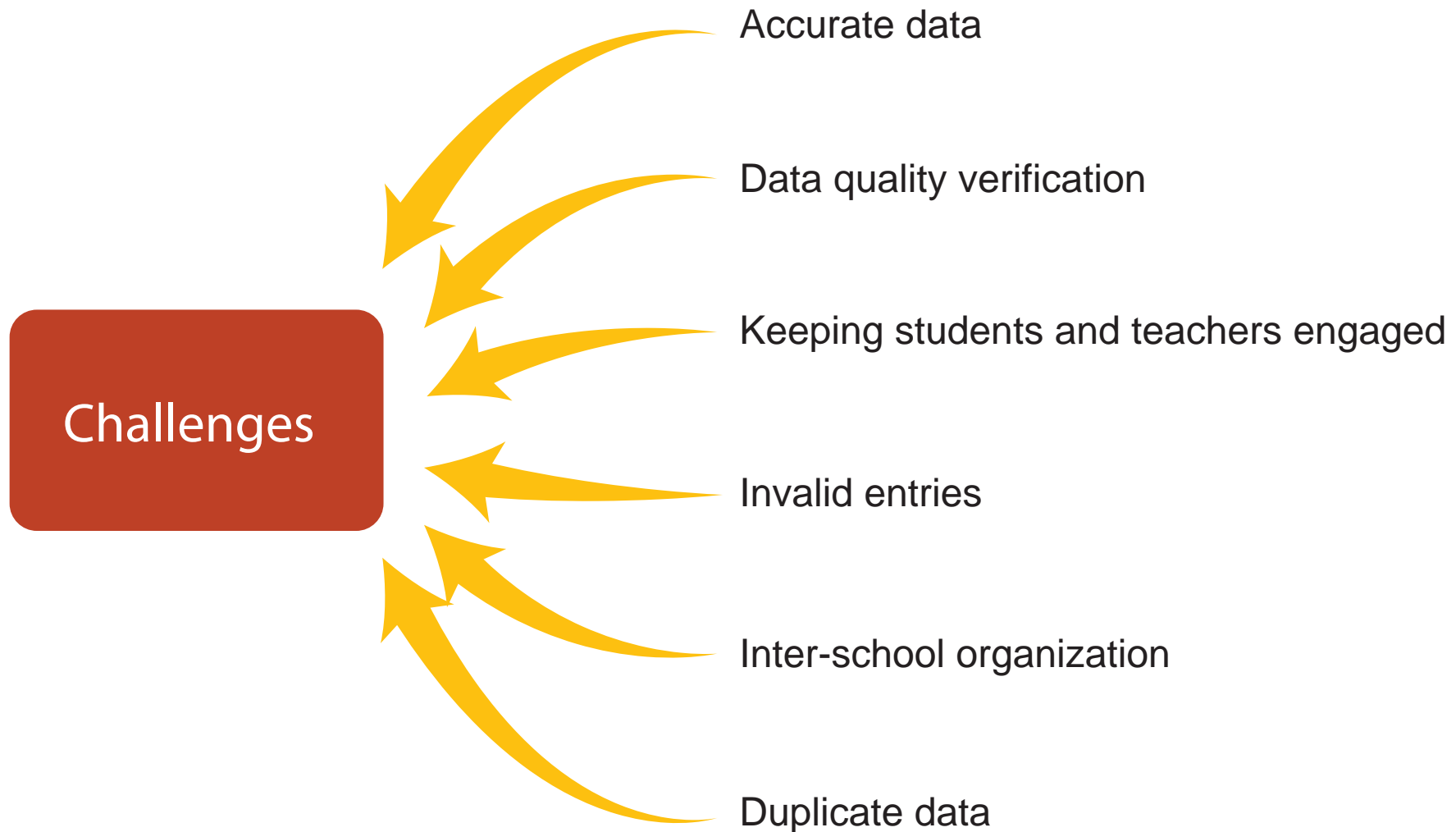
### How to Report

1. By sending an email to [ipro305@yahoo.com](mailto:ipro305@yahoo.com)
2. By filling this form

# Major Obstacles Encountered



# Anticipated Major Challenges



# Questions?

