

Flexible Housing Components

Focusing on flexibility to create a user defined space

Over the past several years the housing industry in the United States has suffered through one of the worst economic recessions in US history. Housing sales and new home construction is down; 50% of mortgaged households are effectively underwater; and foreclosure rates continue to climb. Now economists predict that the housing industry will eventually recover, however, I believe that in the wake of this housing crisis lies an opportunity to rethink and redesign housing for the average citizen.

My approach to this problem is spatial flexibility. My goal is to generate a system that focuses on flexibility in order to create space that is defined by the user. By letting the user define how the space within the home will be used will lead to a more attractive and effective housing model.

I began by consolidating all the "Hard Space" (space that is fixed due to plumbing systems, mechanical systems, etc.) into a single entity, which would then open up the rest of the area for the "Soft Space" (spatial functions that don't require hard elements to operate).

Program

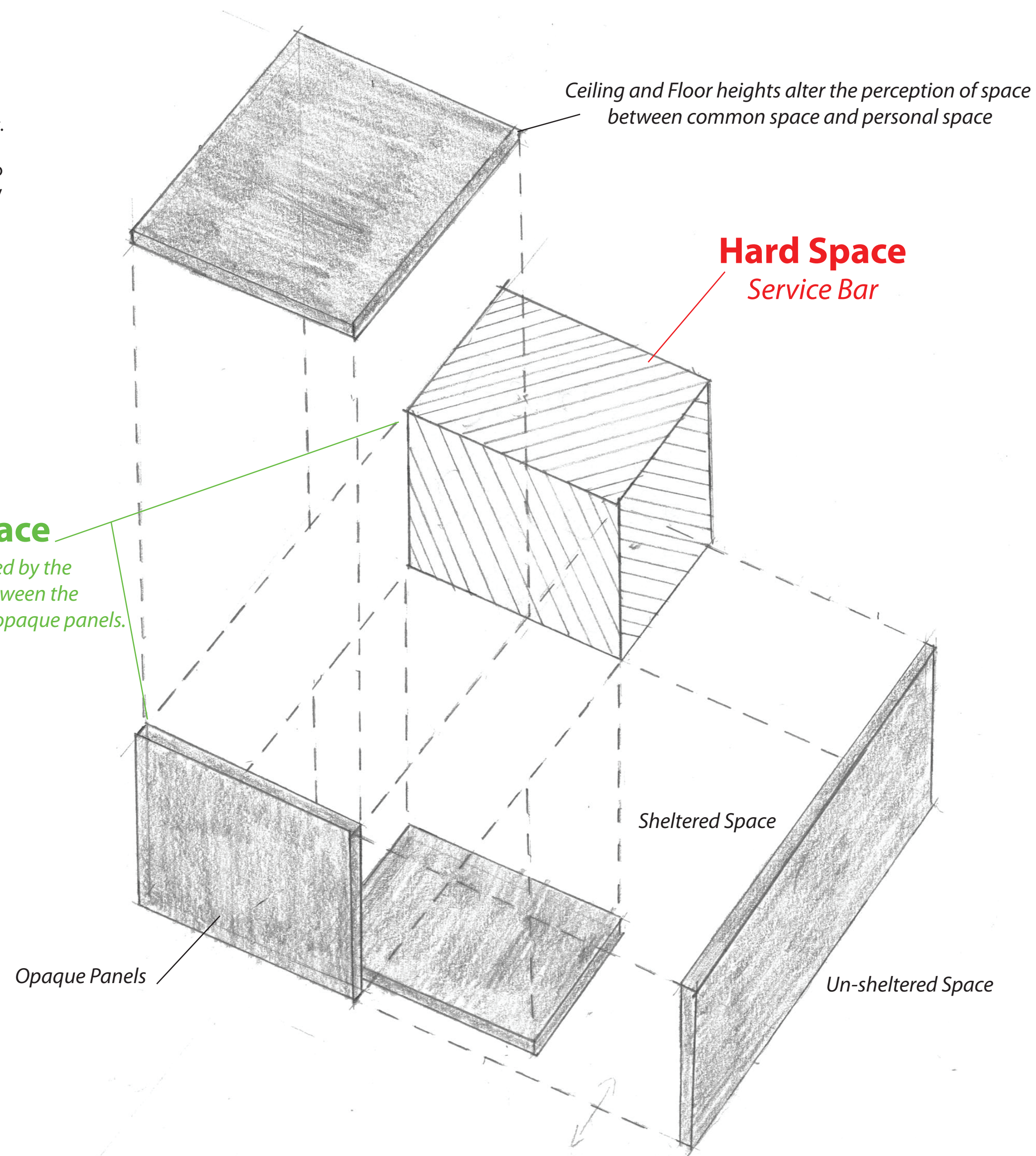
Hard Space

Bathrooms
Kitchen
Building Systems
Vertical Circulation

Soft Space

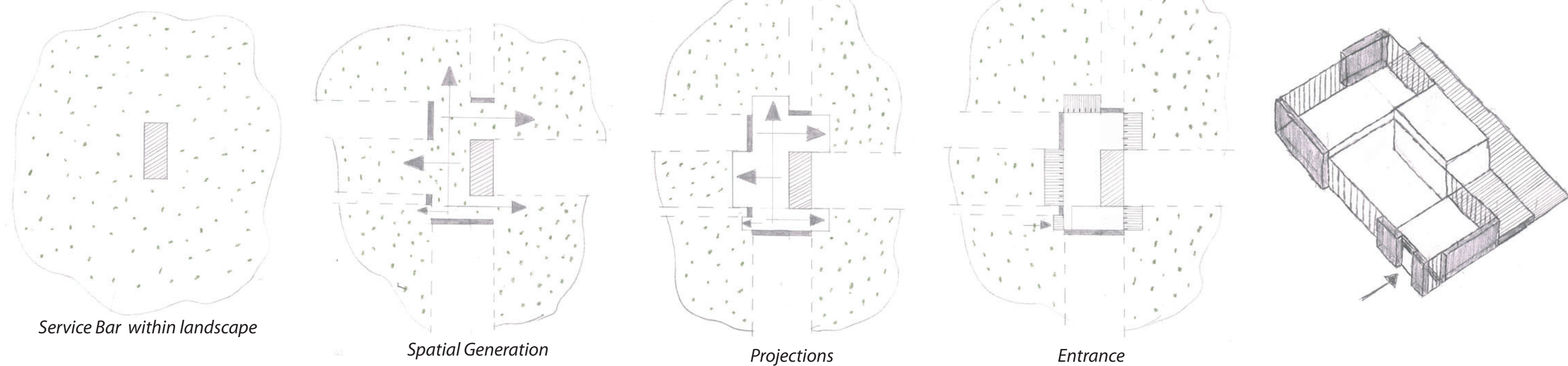
Dining Area
Living Area
Sleeping Area
Study Area

Soft Space
Space generated by the relationship between the Hard Space and the opaque panels.

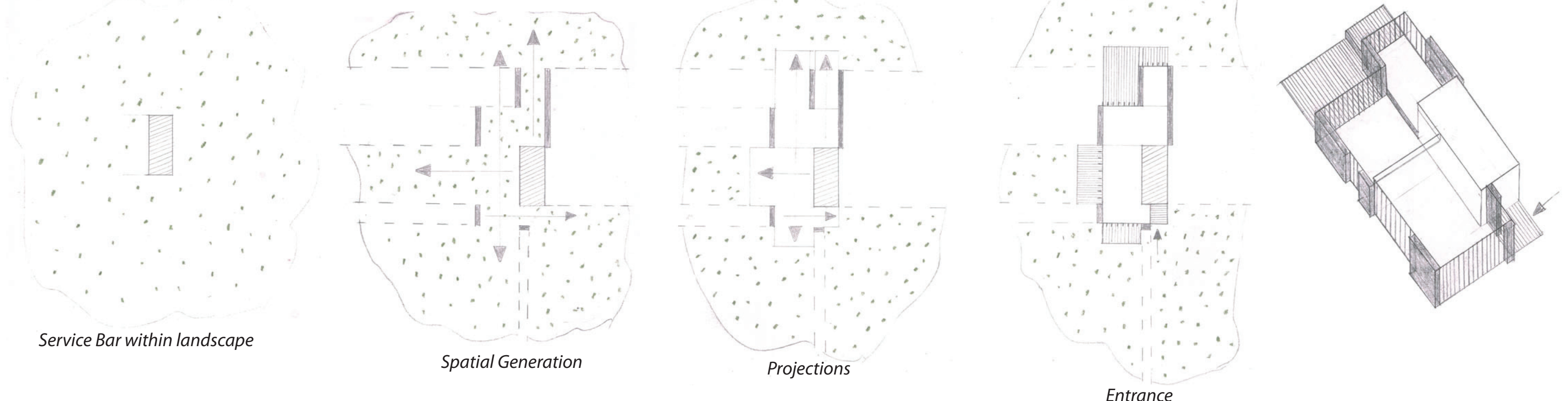


Spatial Exercises

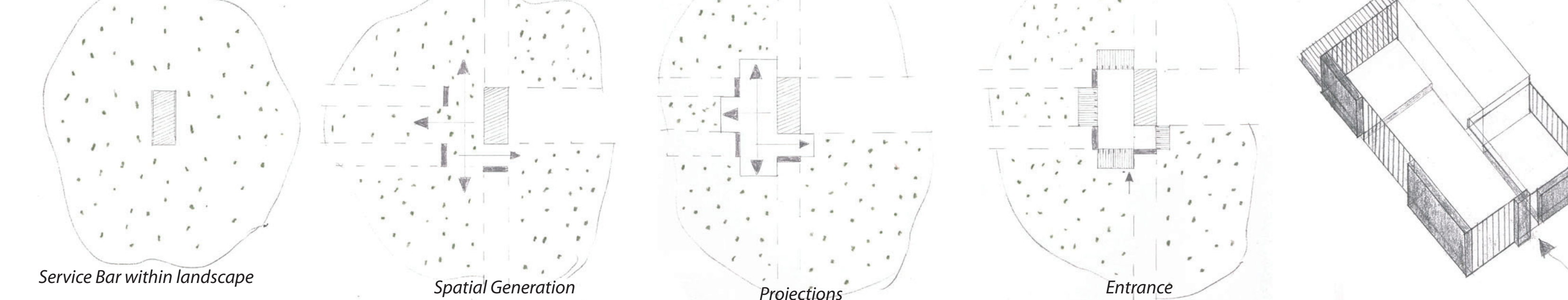
Loaded Service Bar



Loaded Service Bar

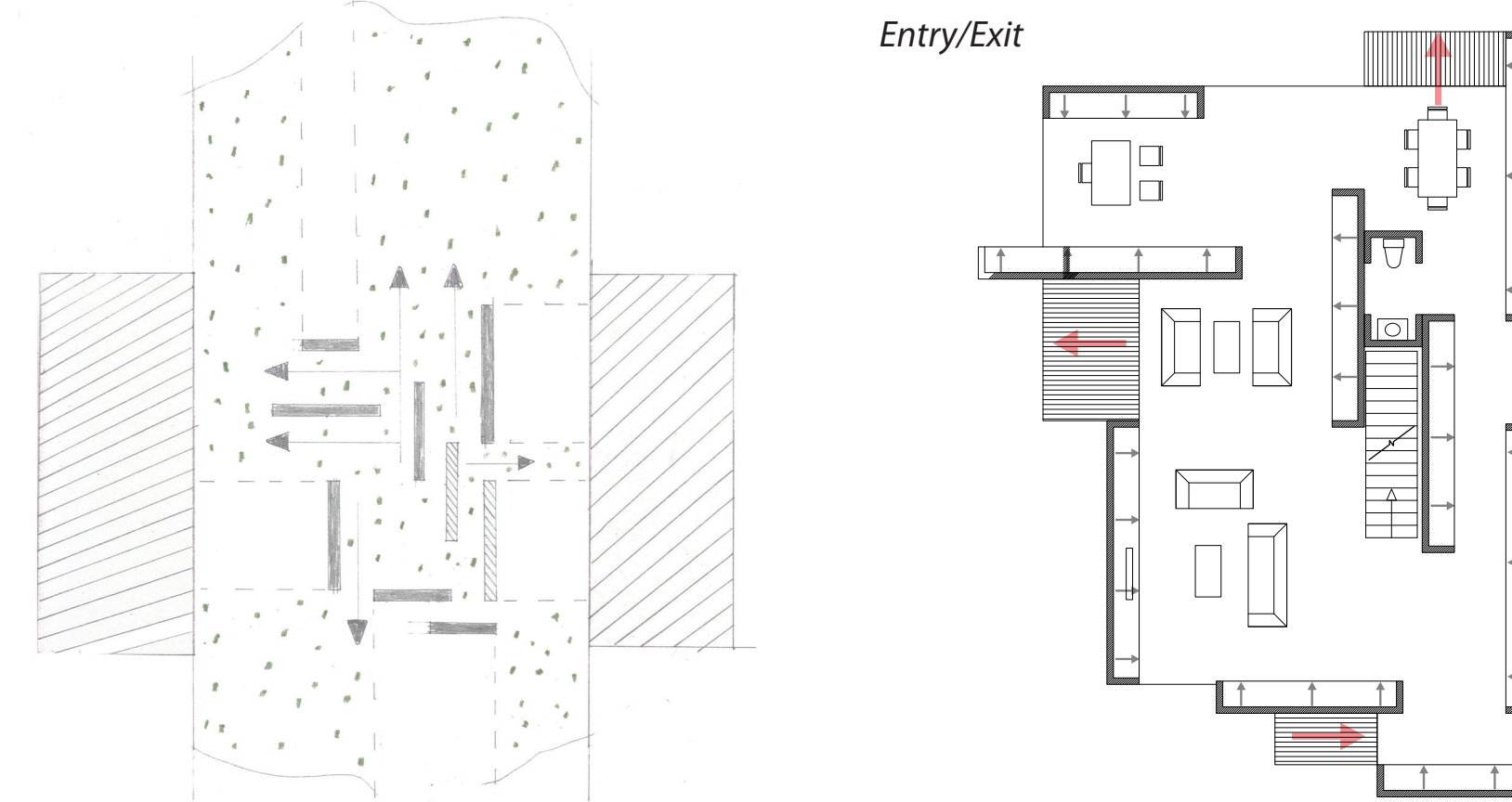


Loaded Service Bar

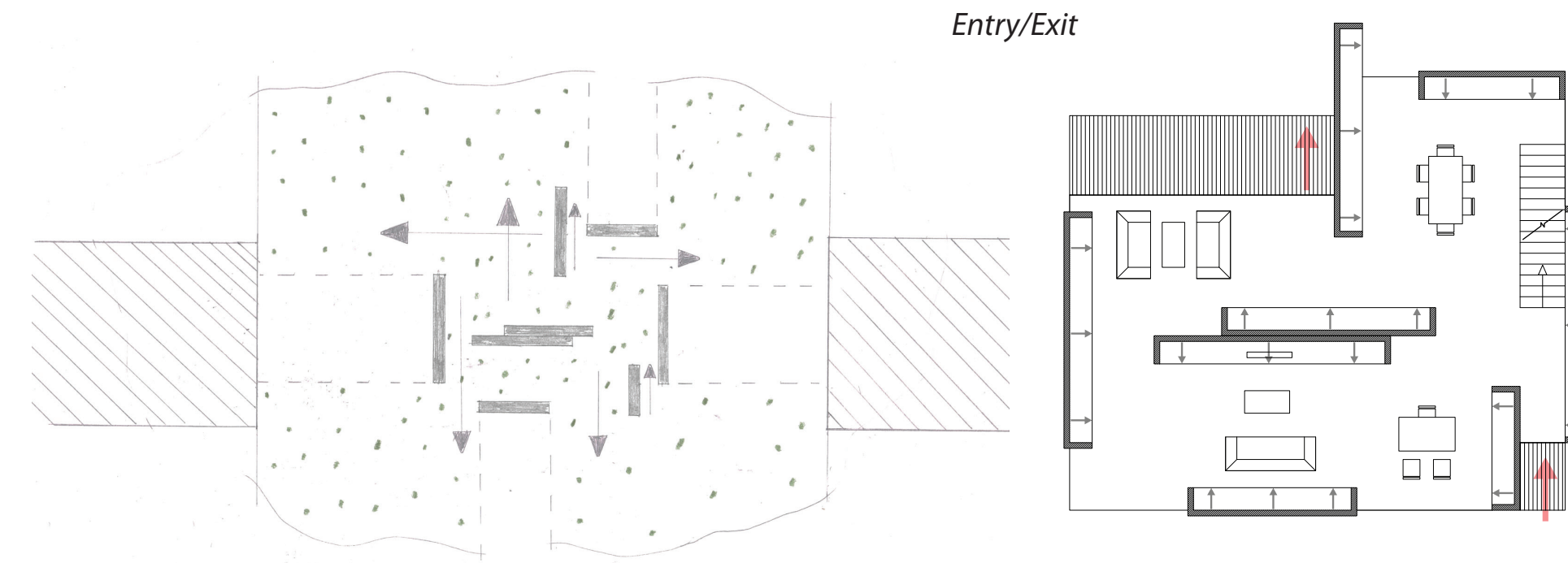


Possible Site Conditions

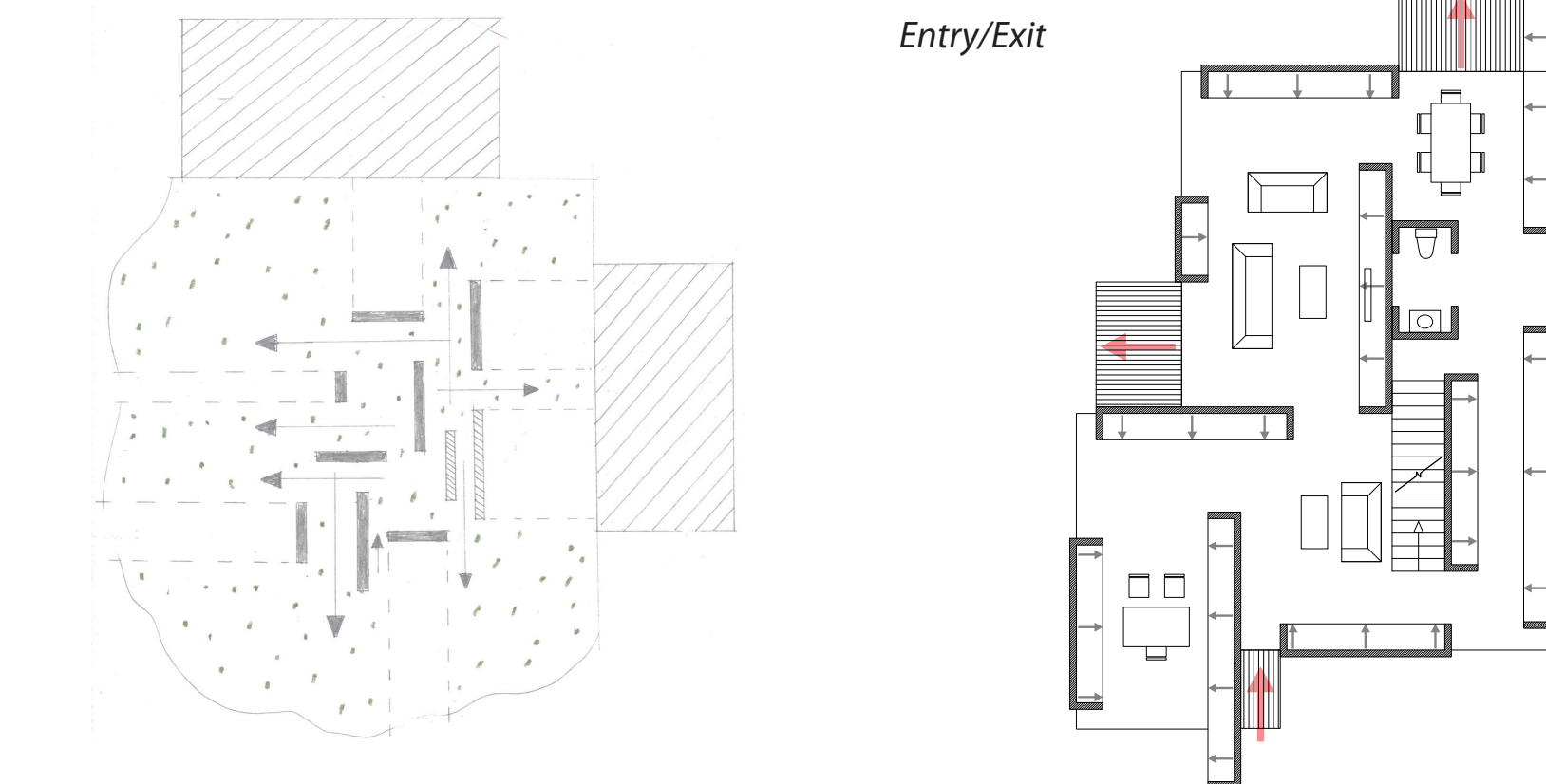
Perpendicular Site Condition



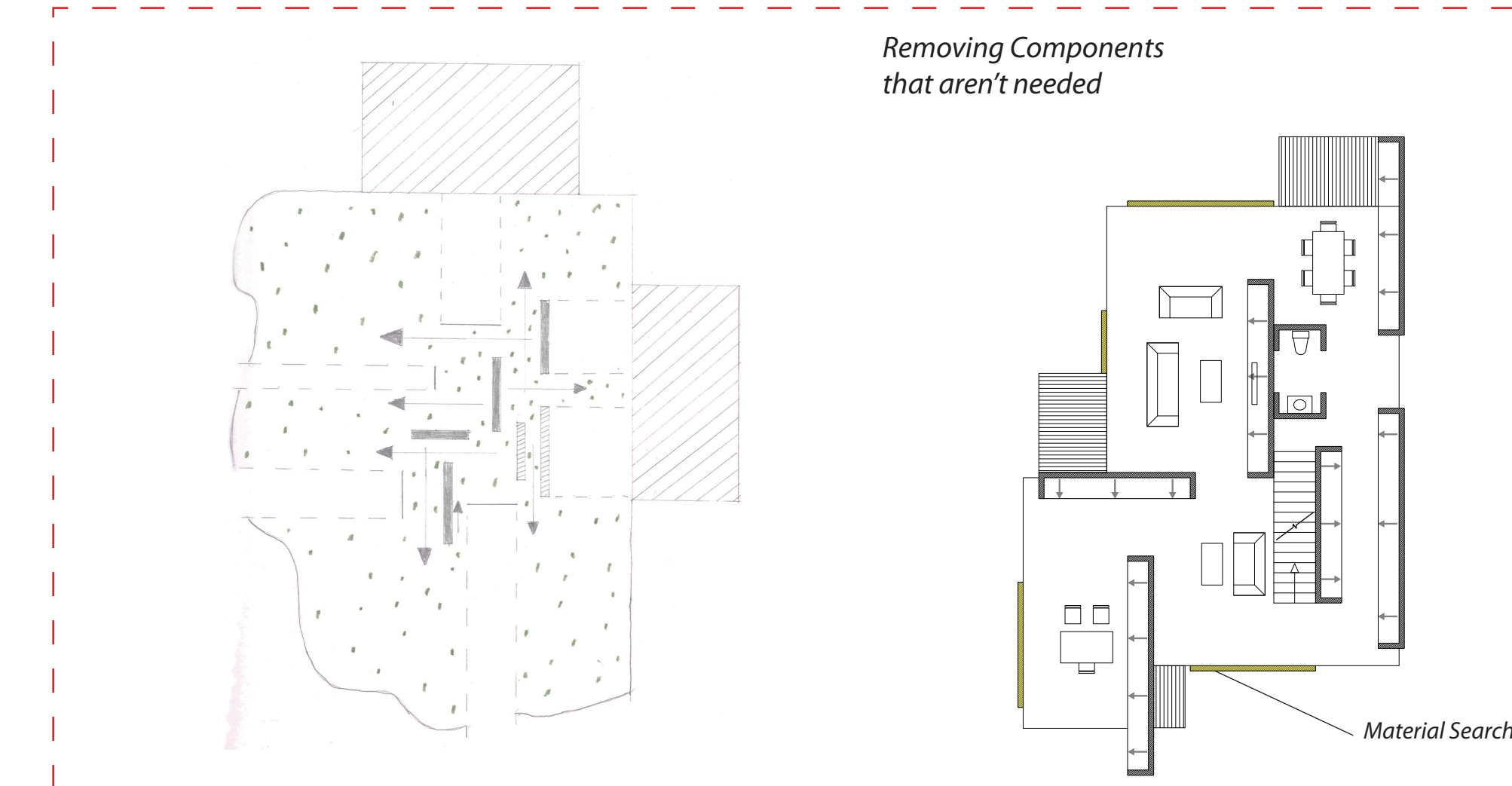
Horizontal Site Condition



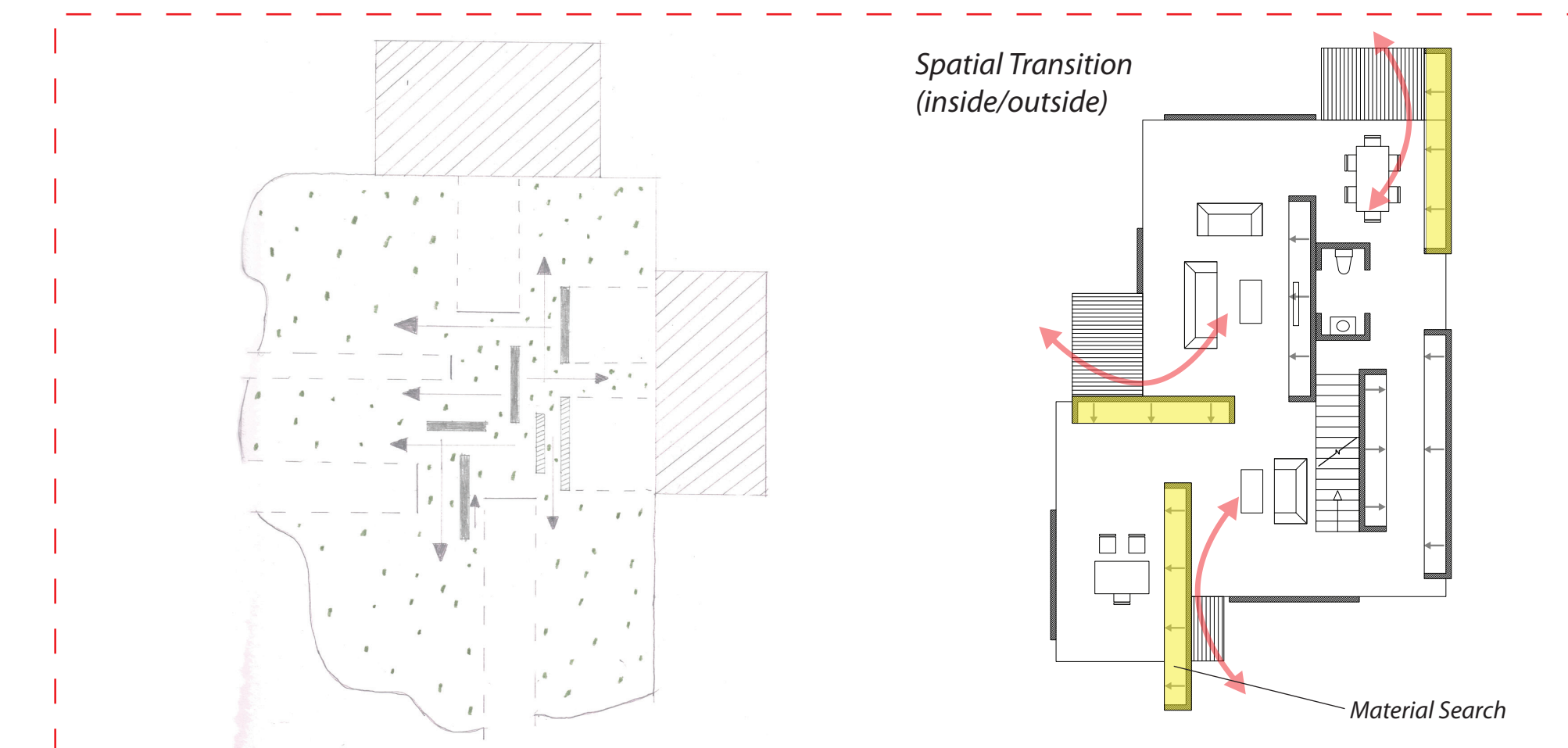
Corner Site Condition



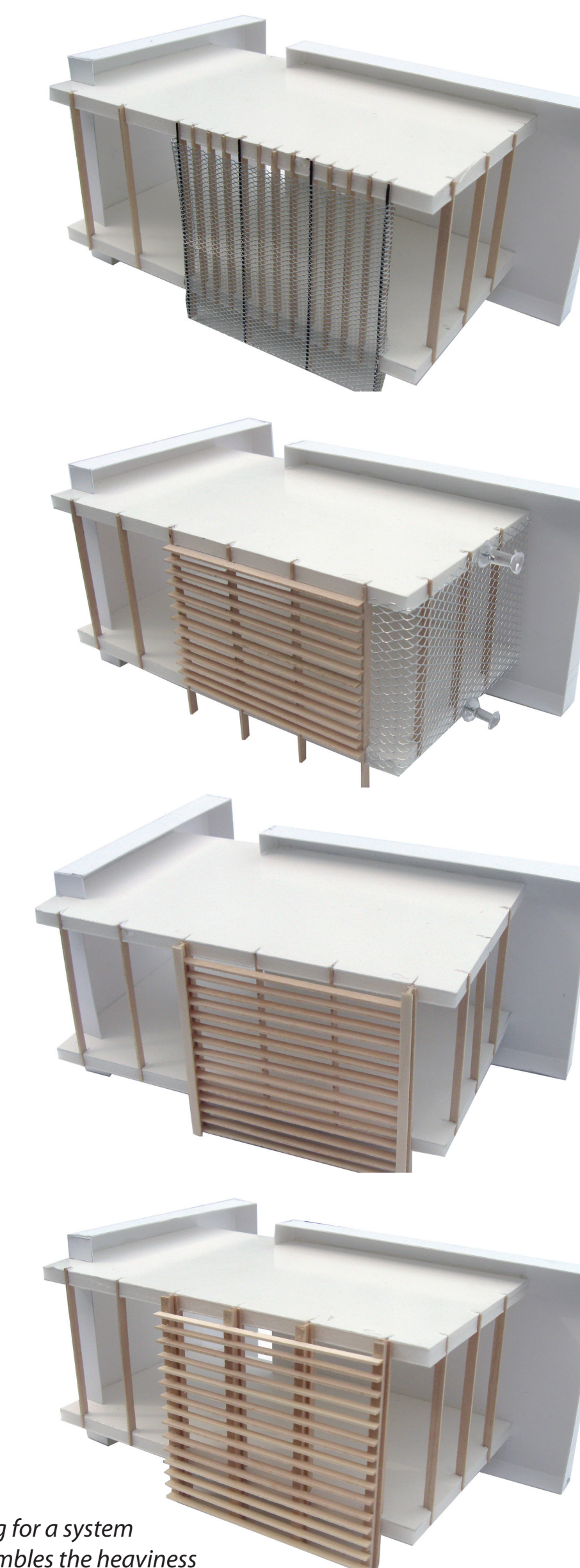
Corner Site Condition



Corner Site Condition



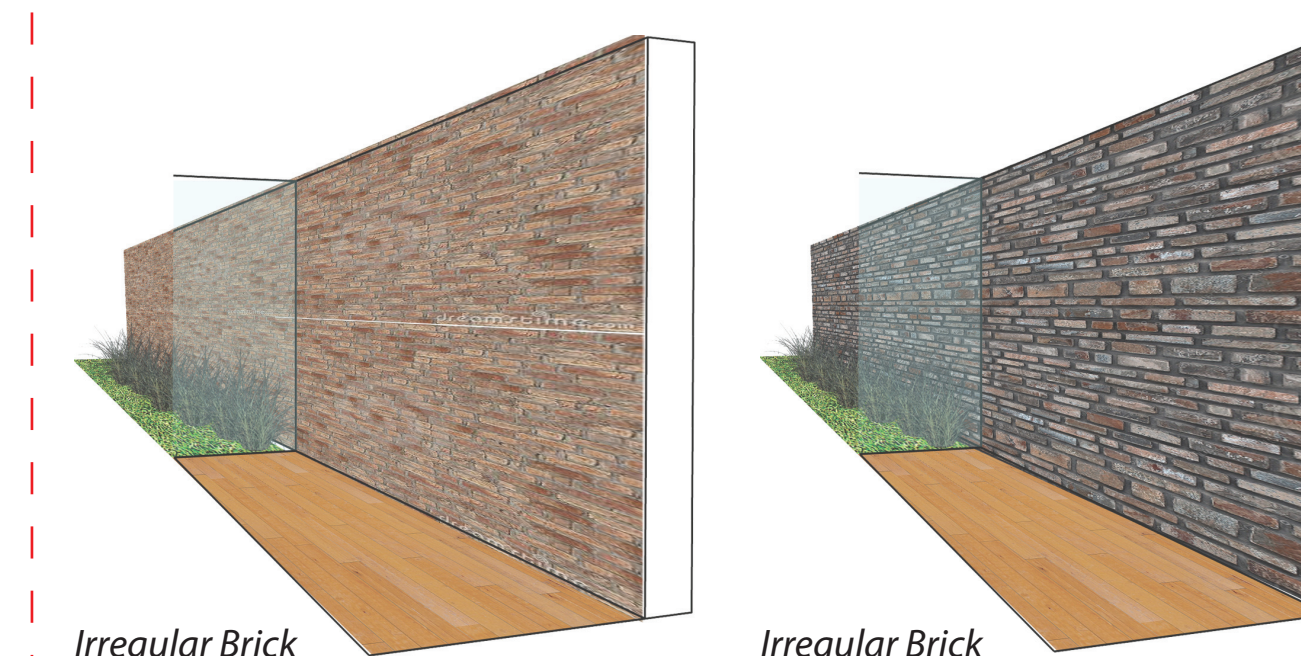
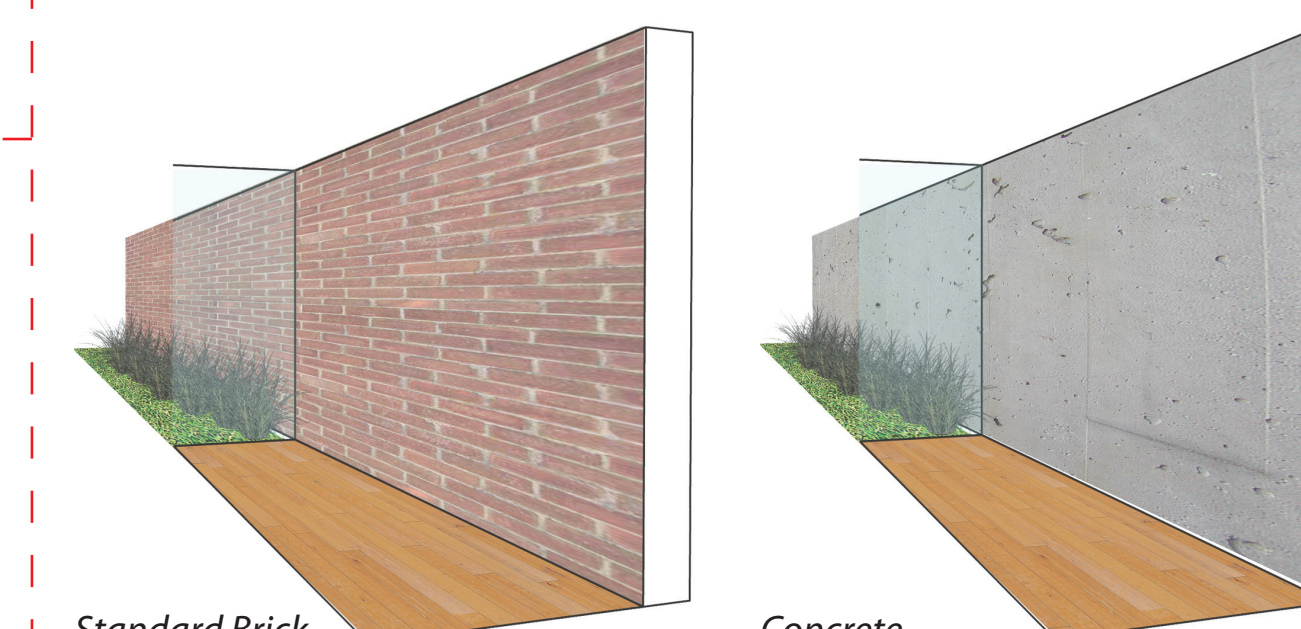
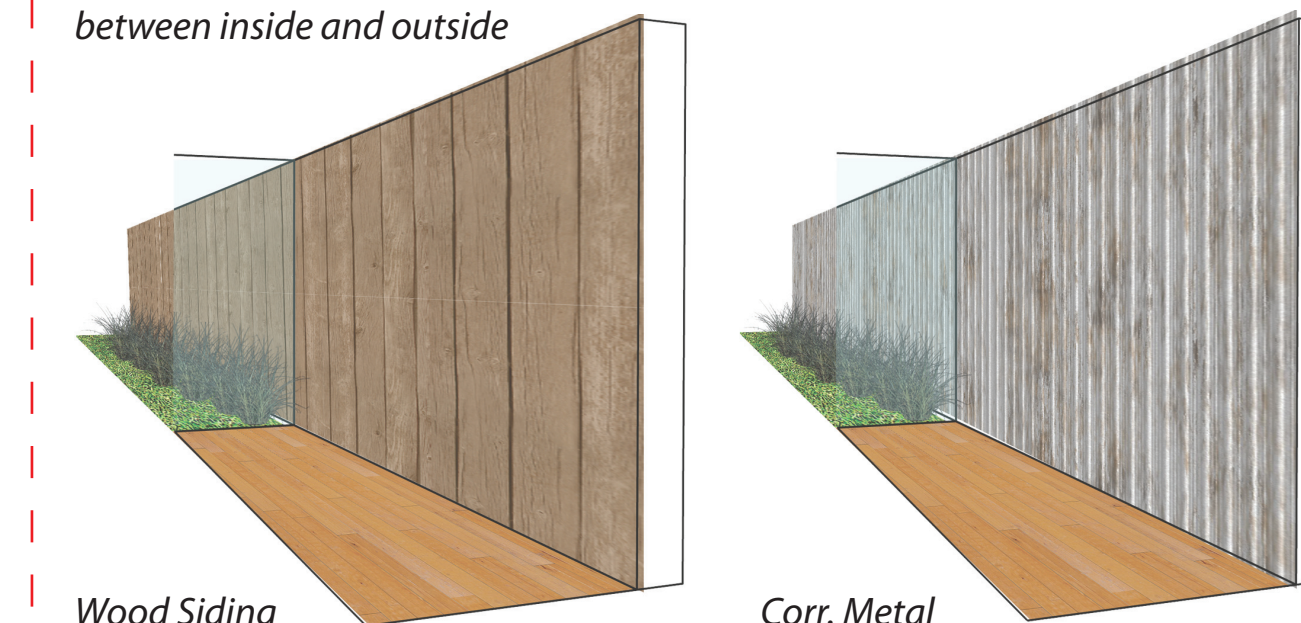
Study Models



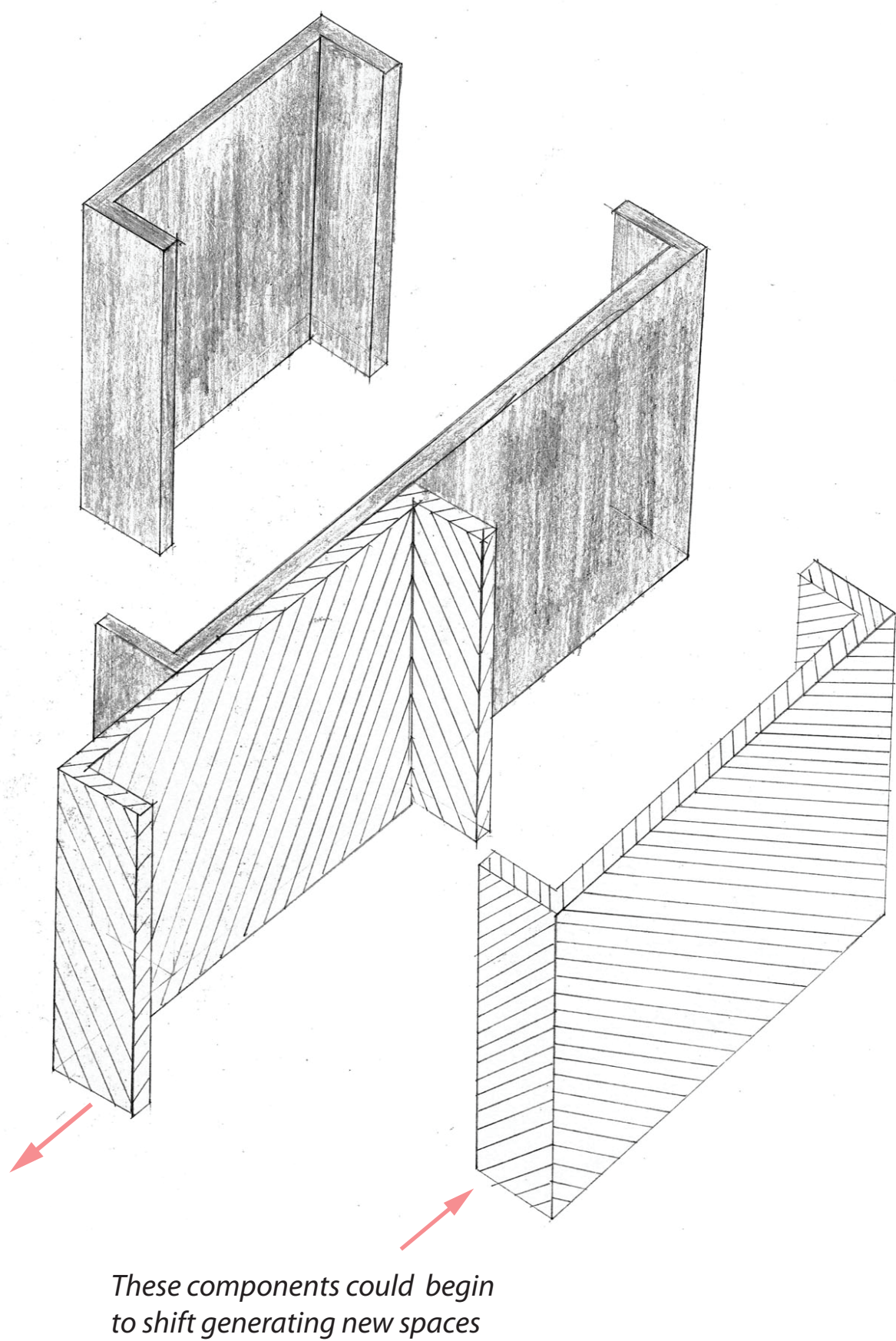
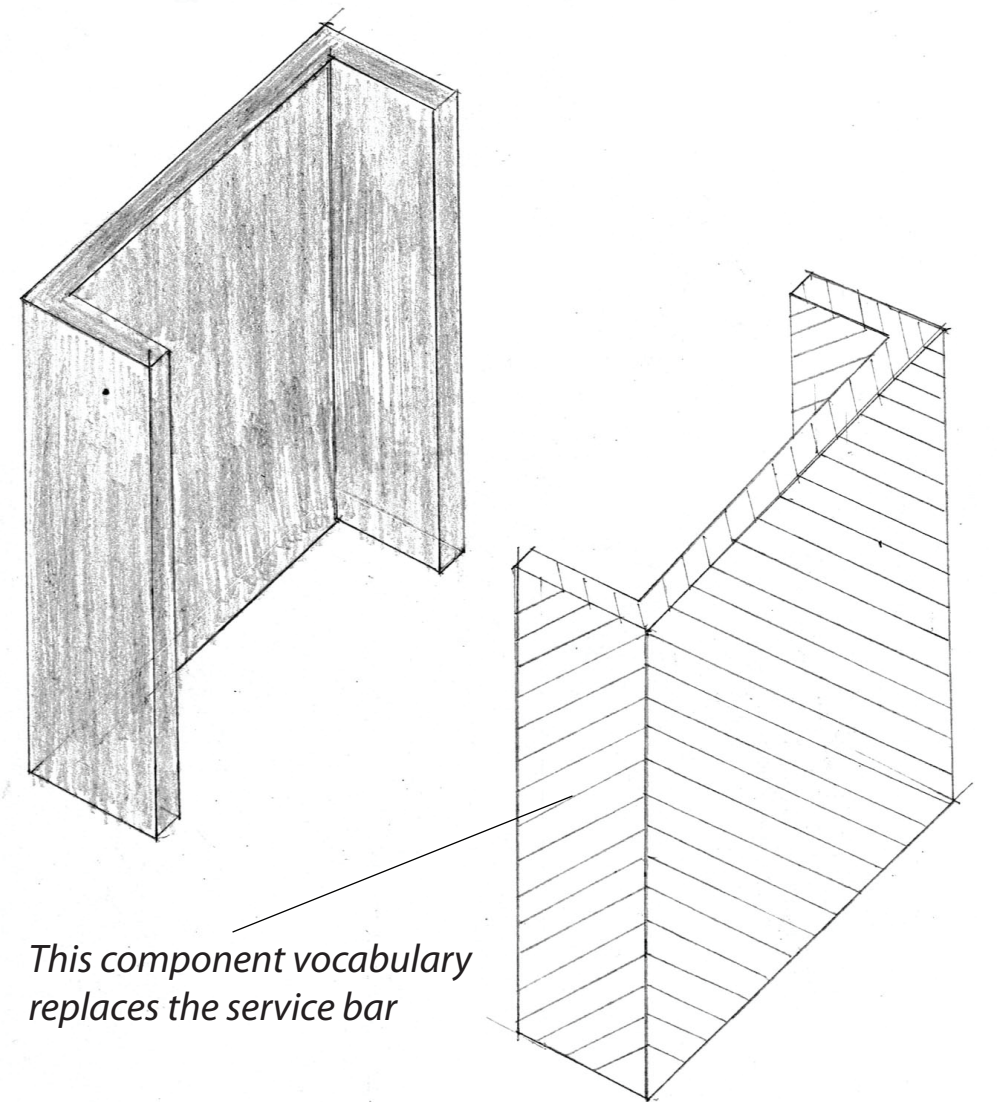
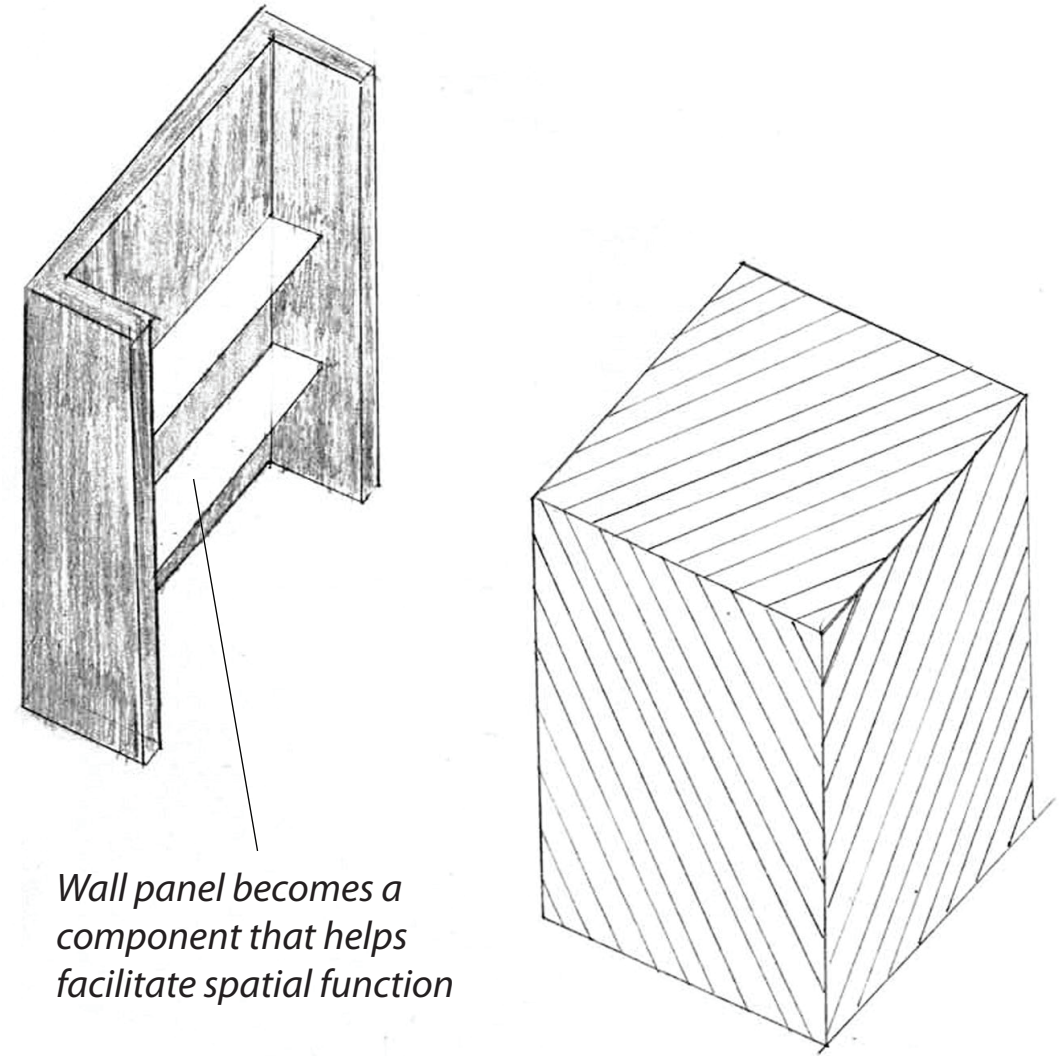
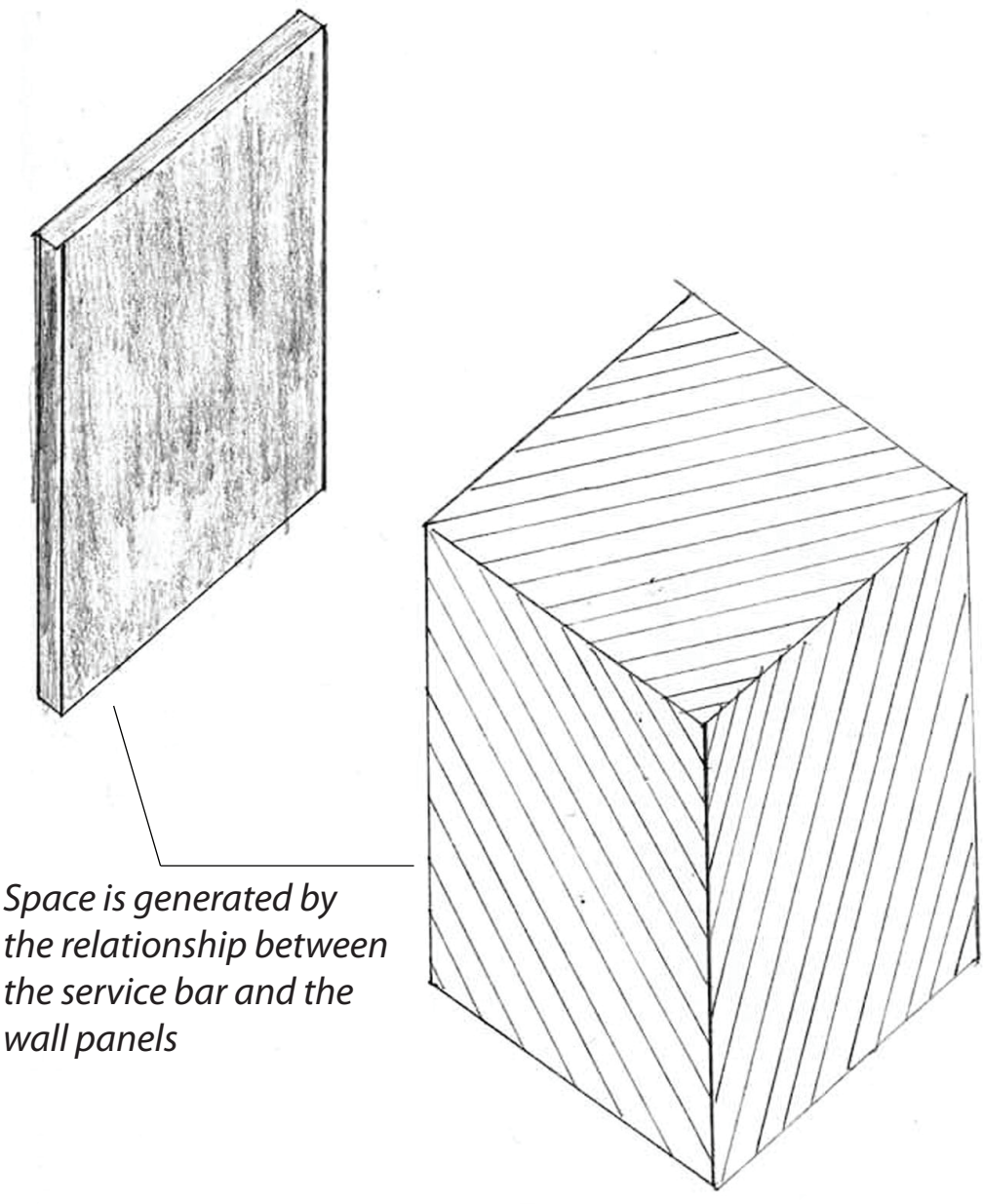
Searching for a system that resembles the heaviness of the removed components while maintaining its structural integrity

Material Study

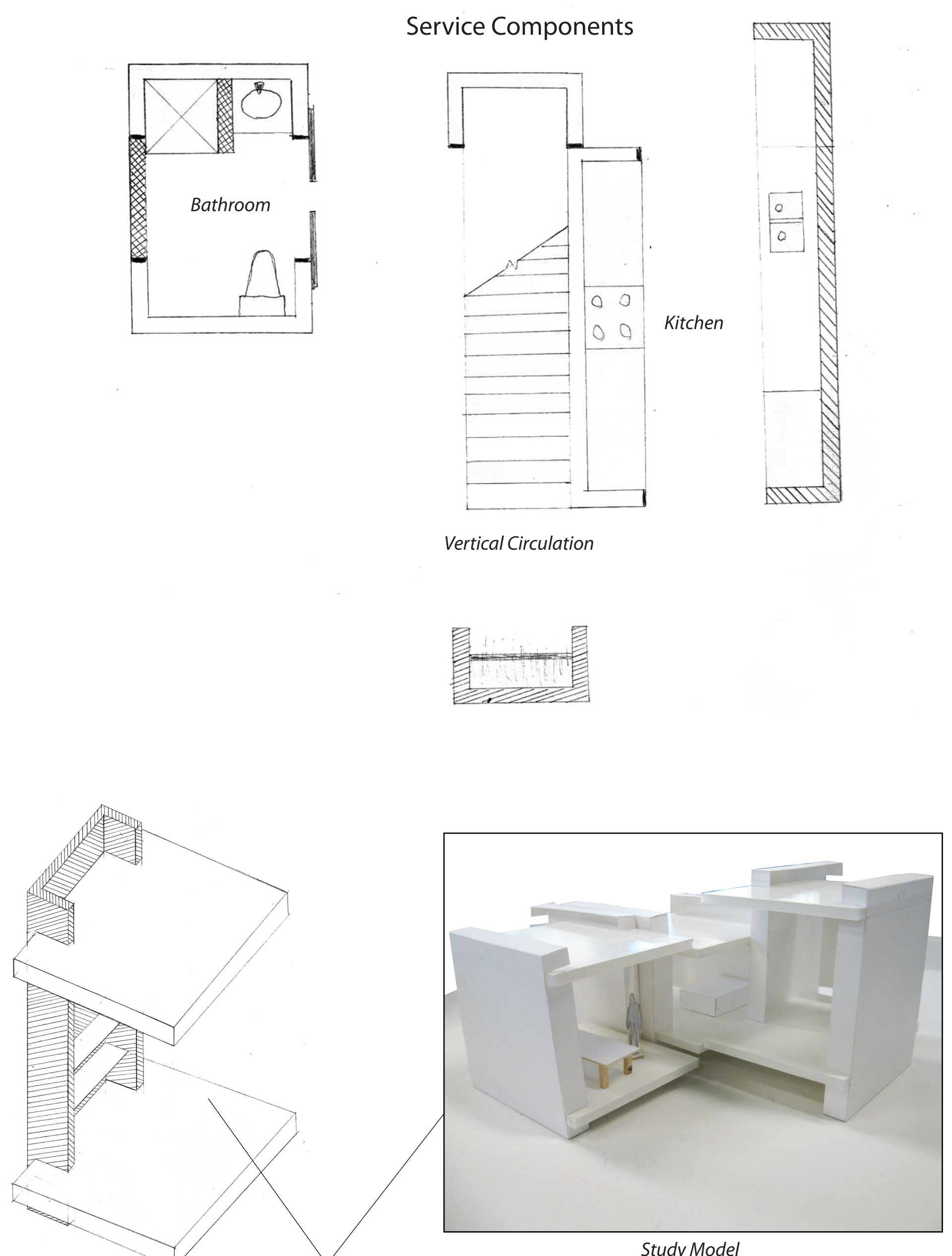
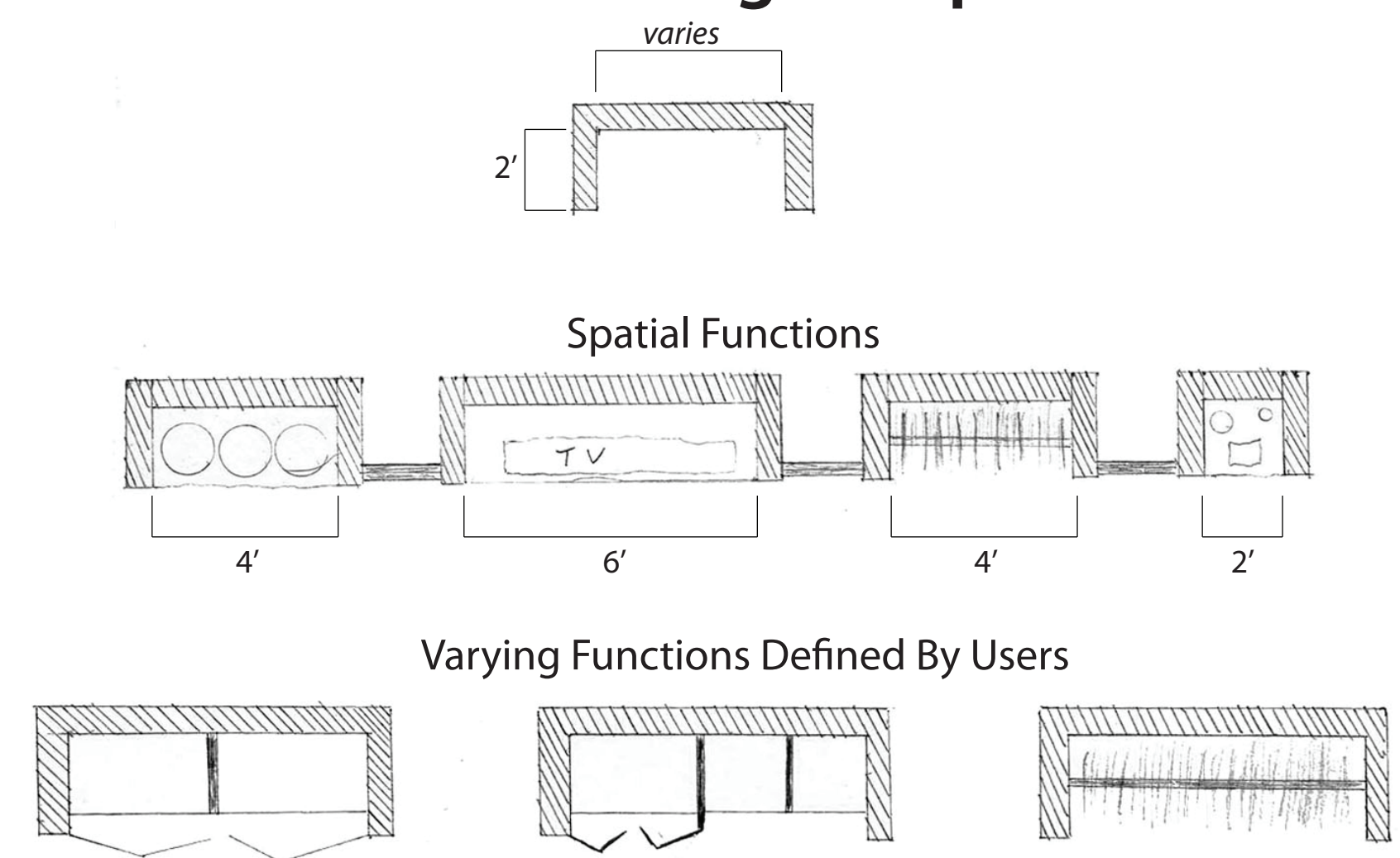
Blending the transition between inside and outside



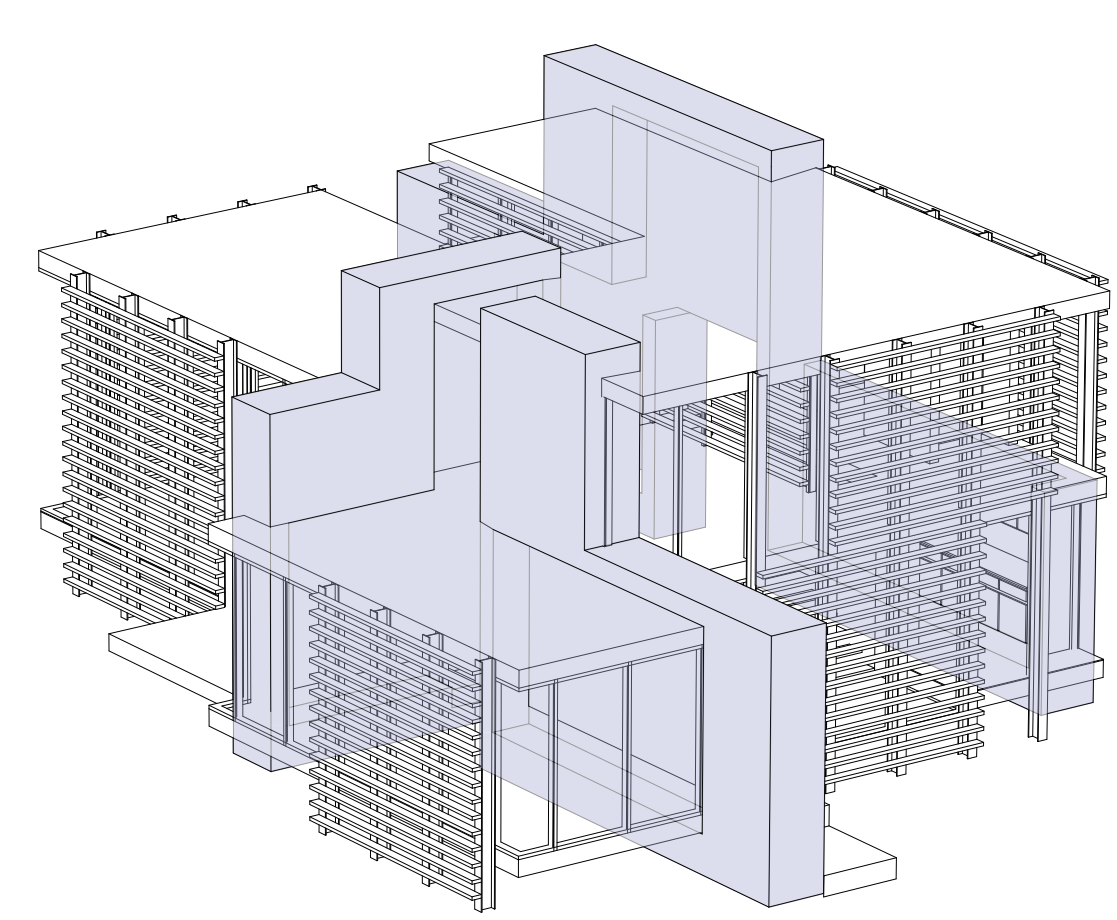
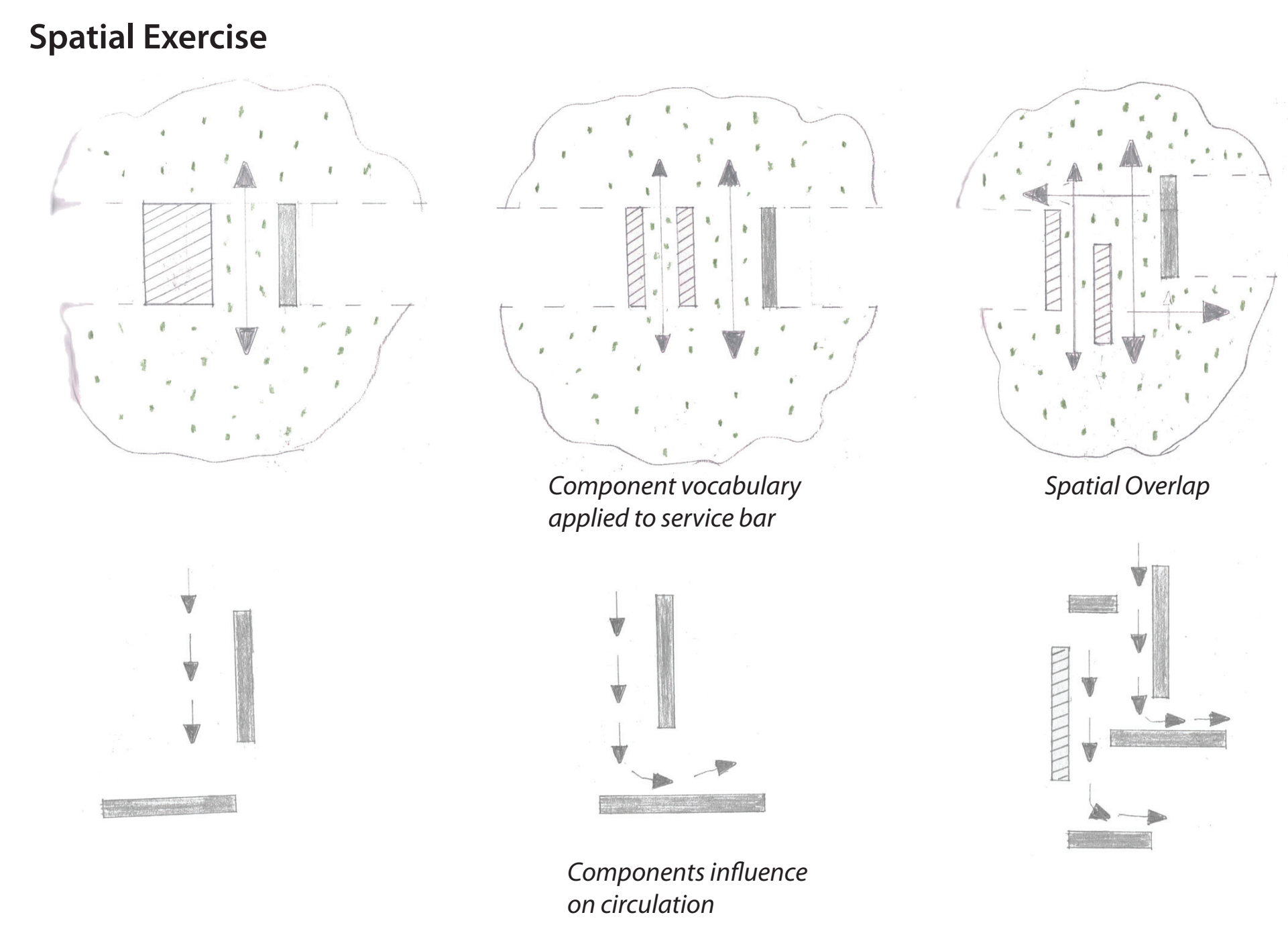
Vocabulary



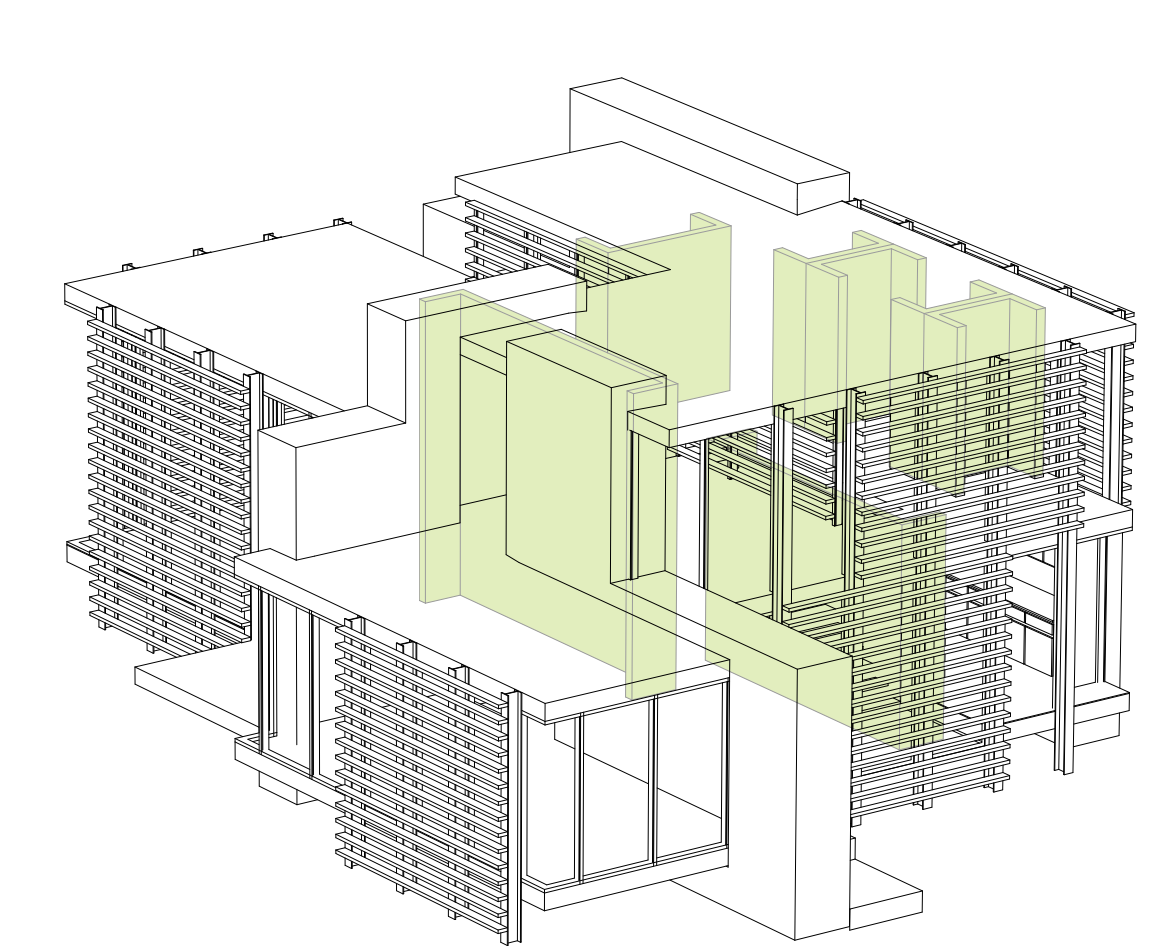
Flexible Housing Component



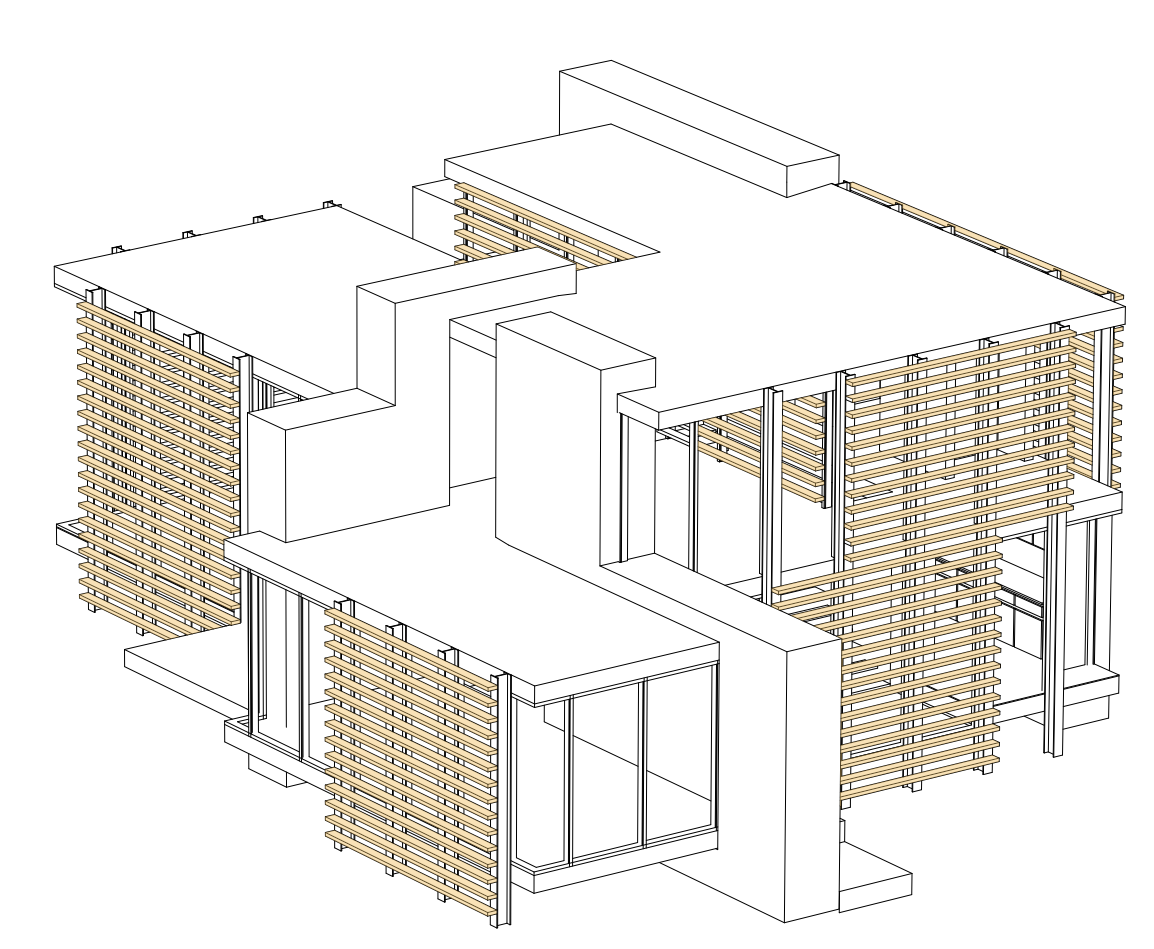
Components begin to hold the horizontal planes; varying the heights and altering the perception of space.



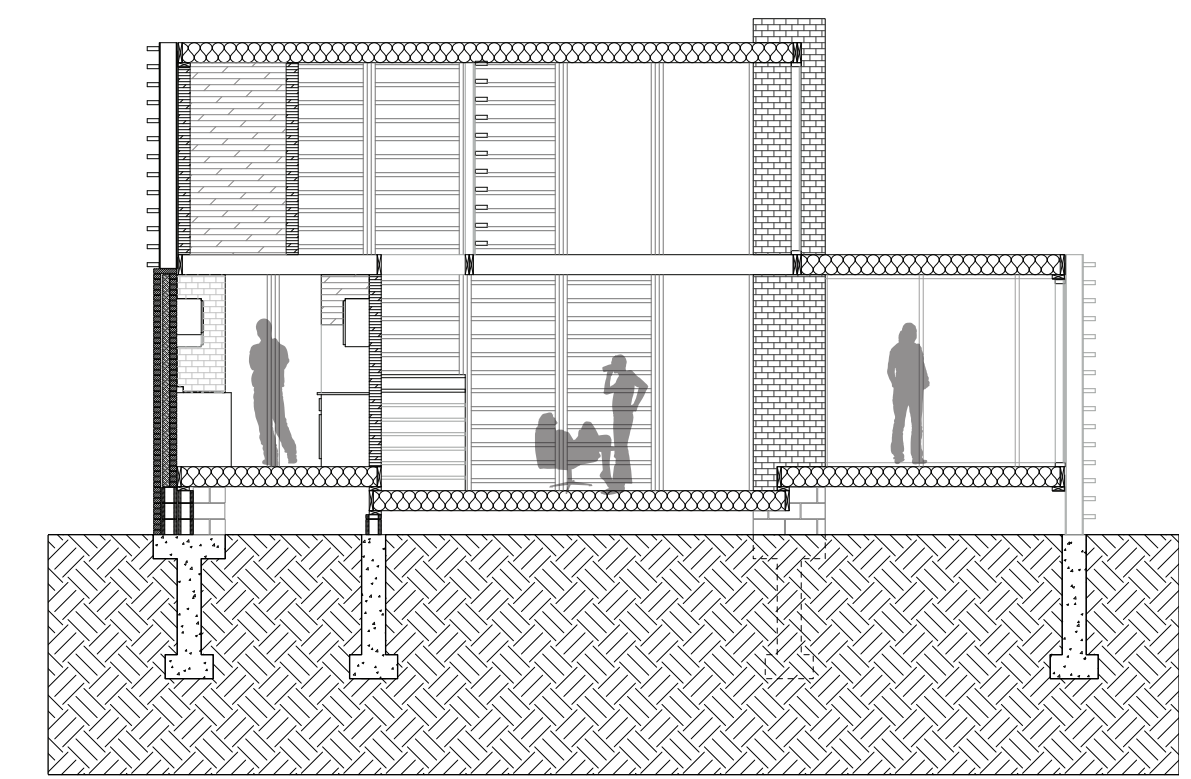
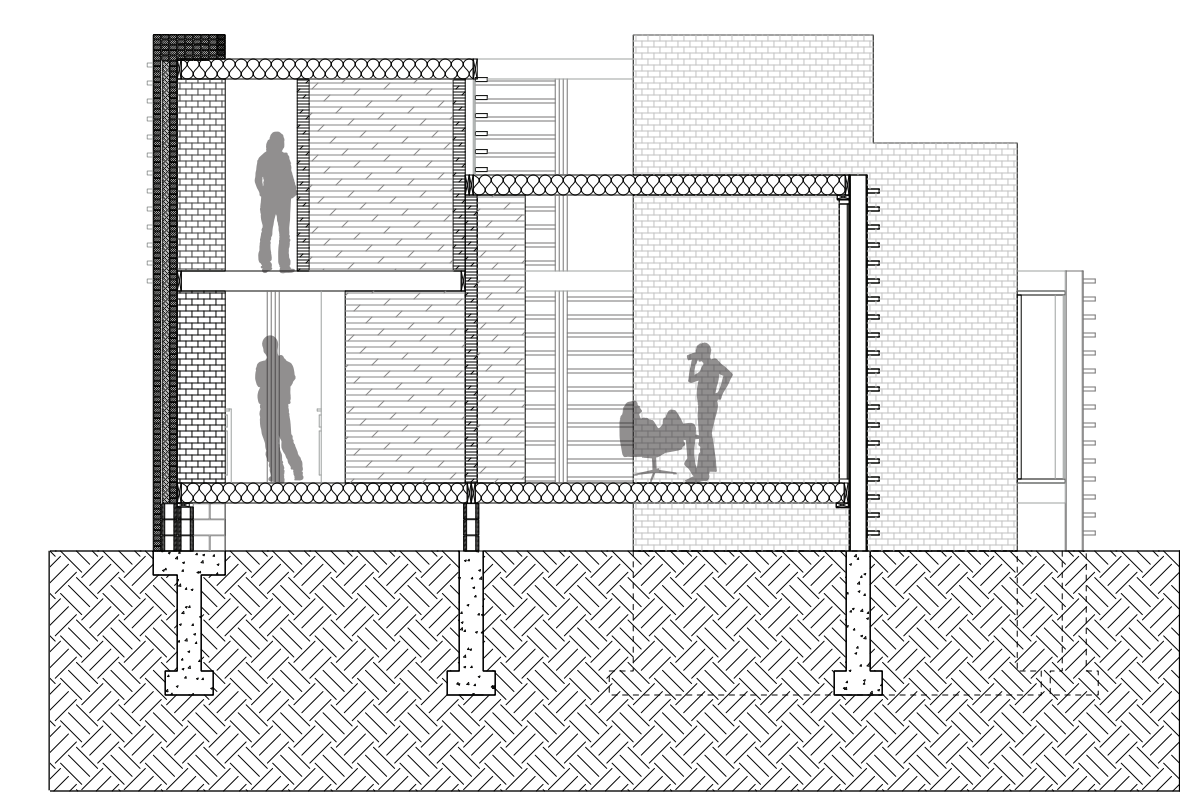
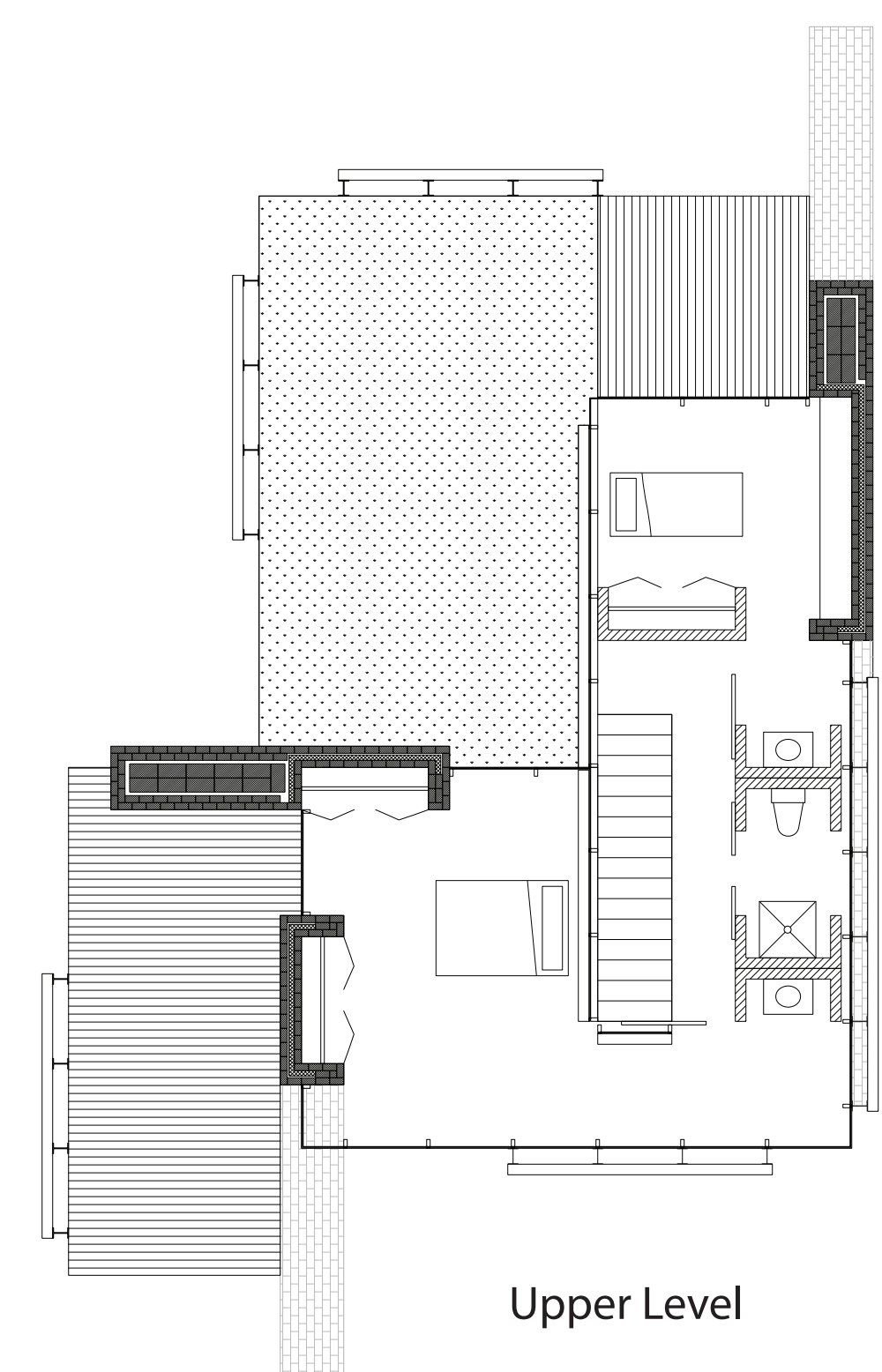
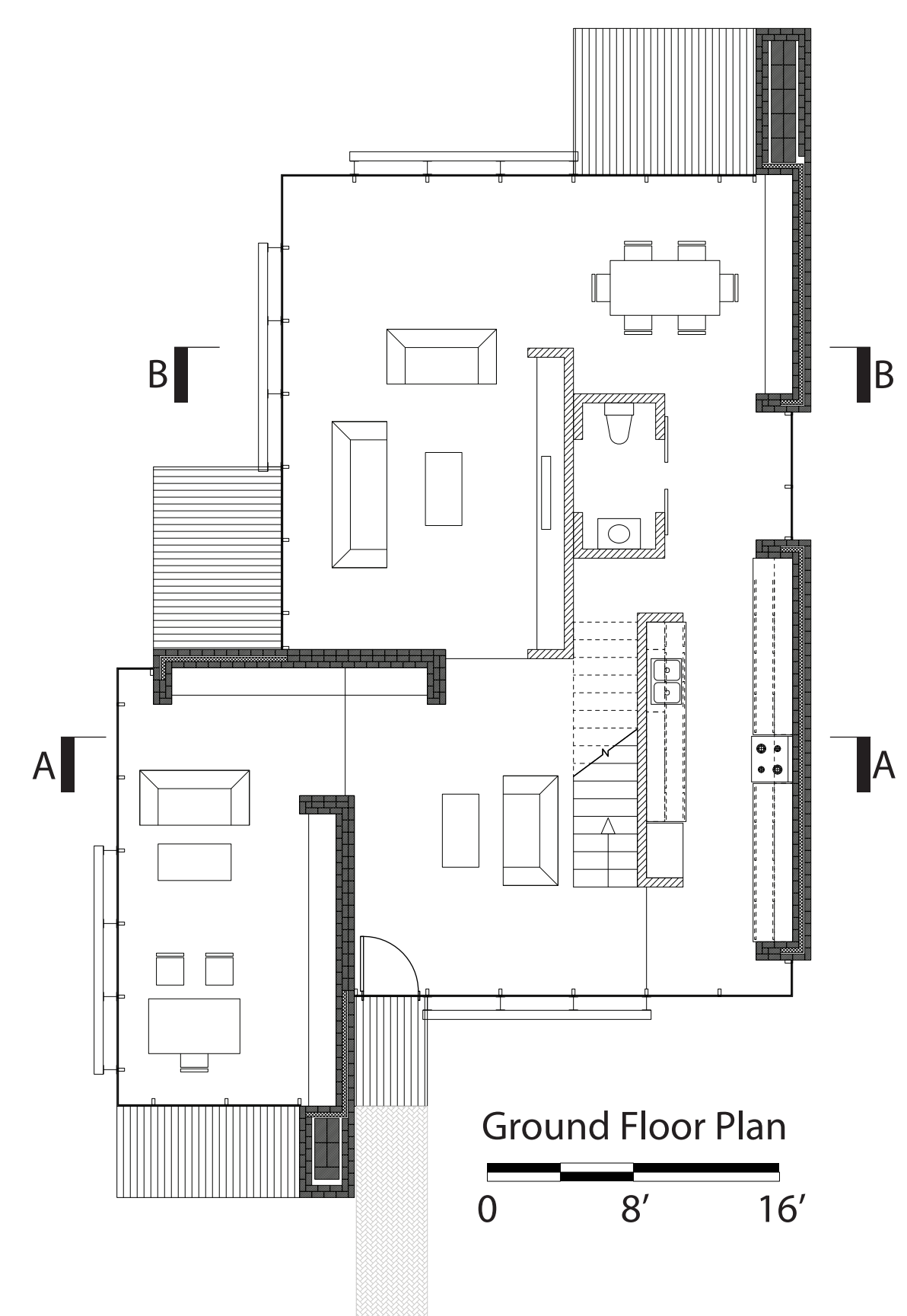
Solid Brick Construction



Mill Work Interior Panels with Mechanical Systems



Steel Column and Wooden Louver System



Corner Site Condition

