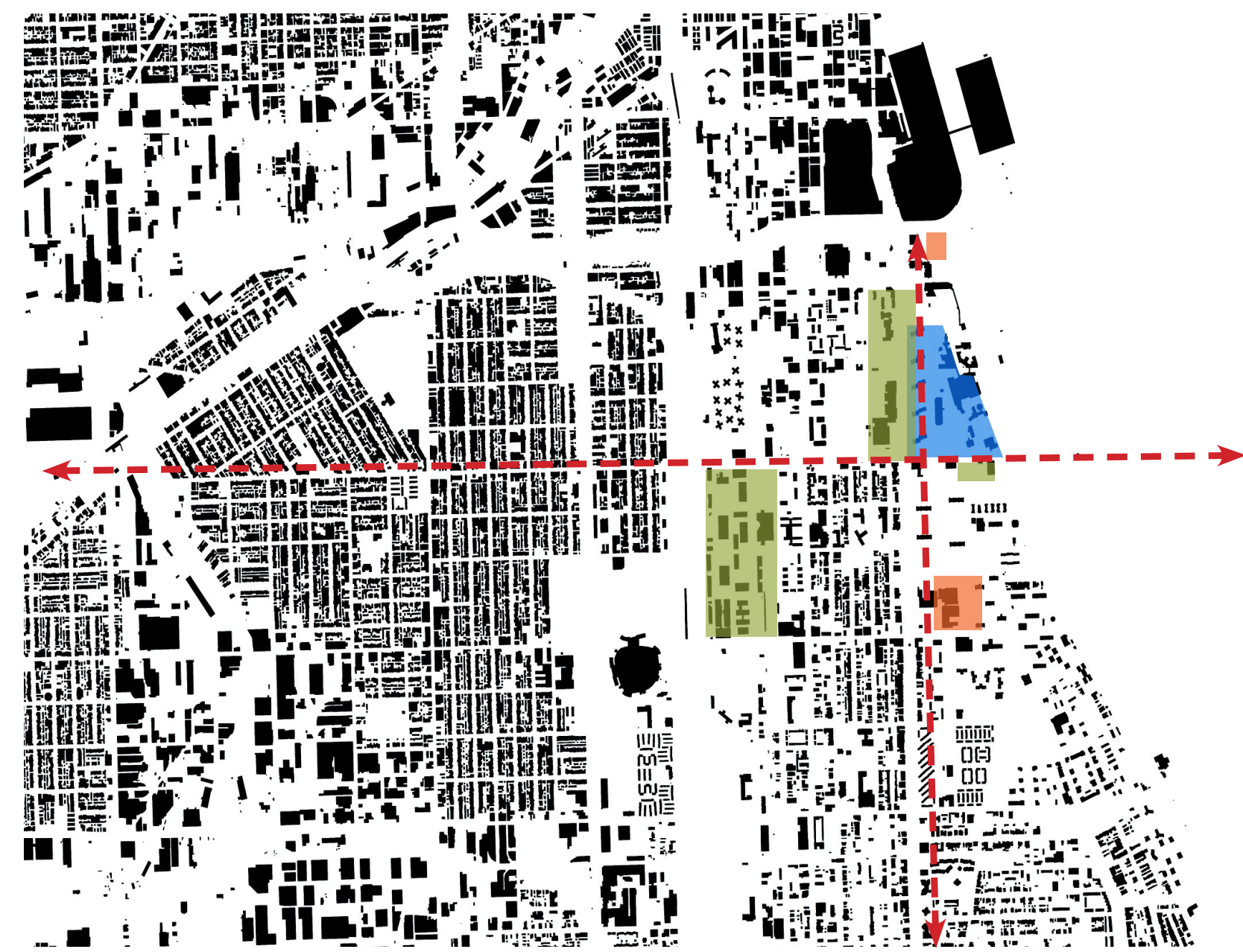


PROGRAMMATIC INTEGRATED HOUSING COMMUNITY DESIGN

REDEVELOPMENT OF PRAIRE SHORE COMMUNITY IN CHICAGO Arch593 master Project

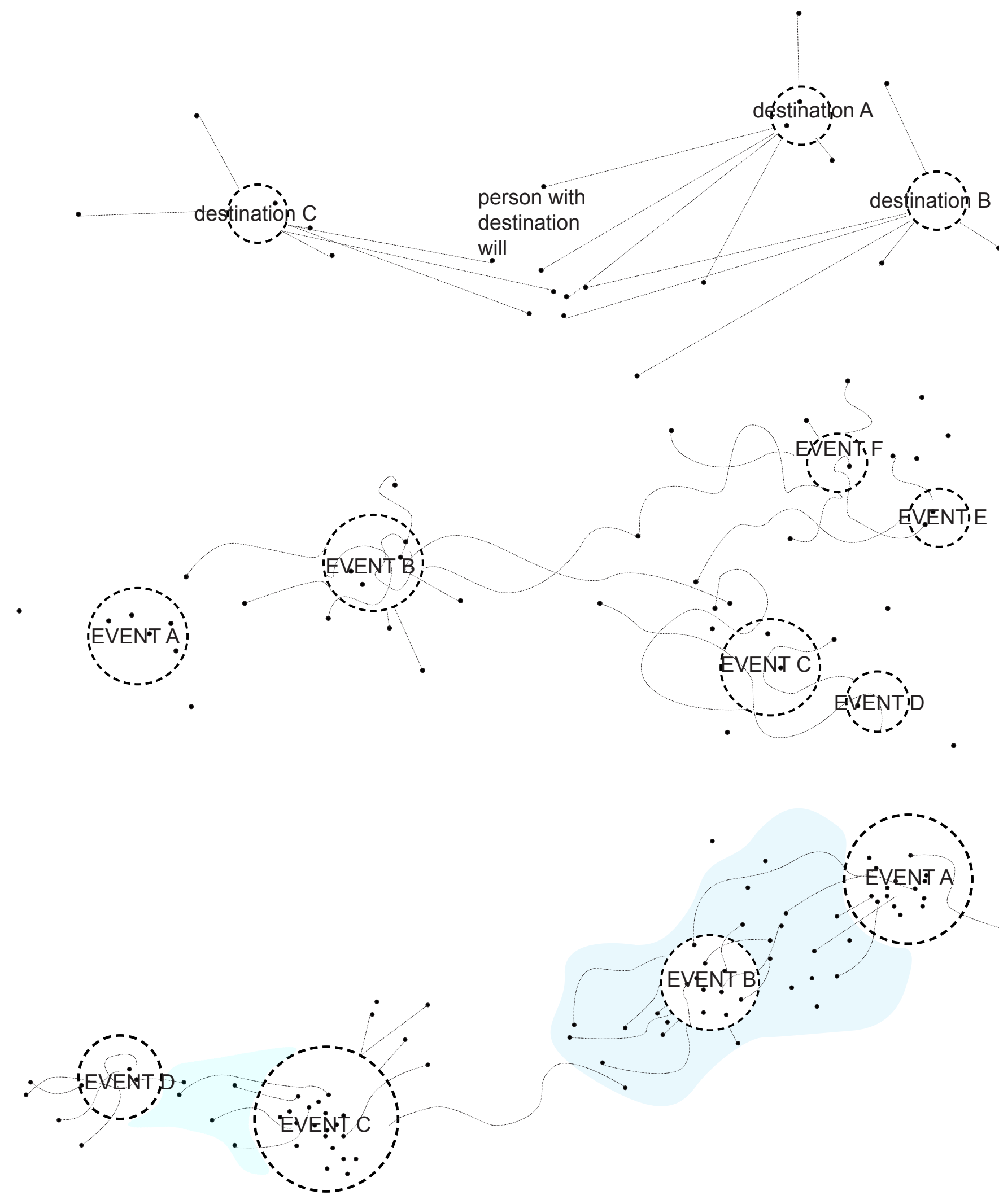
SITE ANALYSIS



- neighborhood Education
- Site Area
- neighborhood Commercial
- major transportation

Project Description

Basing on the plan of Lake Meadow re-development, the proposal of Prairie Shore residential area will meet the demand of the raising population, which will be a mixed used, mid density residents plan. The idea behind this proposal is trying to integrate programs to the housing plan which could also enhance the connection between people and the city. Each of the housing takes advantage of the site facing Lake Michigan and sunshine, the amenities and programs located on the ground level of building courtyard, supply the service of residents living by, while on the 31st street there are several types of commercial areas which will also contribute the vitality to this community.



NECESSARY ACTIVITIES

Necessary Activities

- activities such as going to school or work, shopping, waiting for a bus.
- a person is required to participate.
- these activities will take place throughout the year under nearly all conditions, and are more or less independent of the exterior environment.

OPTIONAL ACTIVITIES

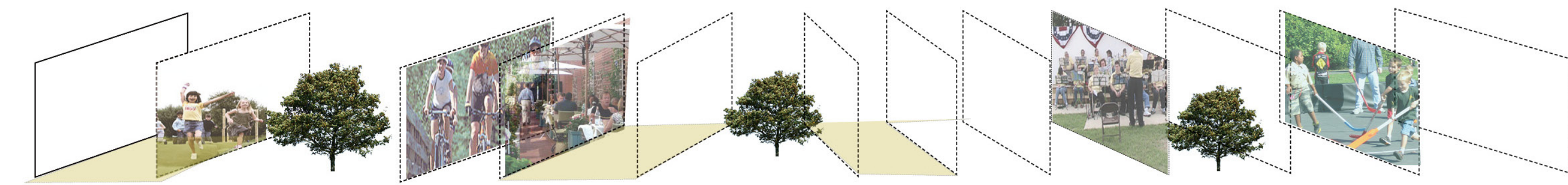
Optional Activities

- pursuits that are participated in if there is a wish to do so and if time and place make it possible - are quite another matter.
- category includes activities such as taking a walk or standing around to enjoy life or sitting to sunbathe
- these activities take place only when exterior conditions are optimal, when weather and place invite them.

SOCIAL ACTIVITIES

Social Activities

- all activities which depend on the presence of others in public spaces.
- activities include children at play, greetings and conversations, communal activities of all kinds and finally - passive contacts, simply seeing and hearing other people.
- could also be termed resultant activities because because in nearly all instances they evolve from activities linked to the other two categories.
- social activities occur spontaneously as a direct consequence of people moving about and being in the same space.



PROGRAMMATIC INTEGRATED HOUSING COMMUNITY DESIGN

REDEVELOPMENT OF PRAIRE SHORE COMMUNITY IN CHICAGO Arch593 master Project

