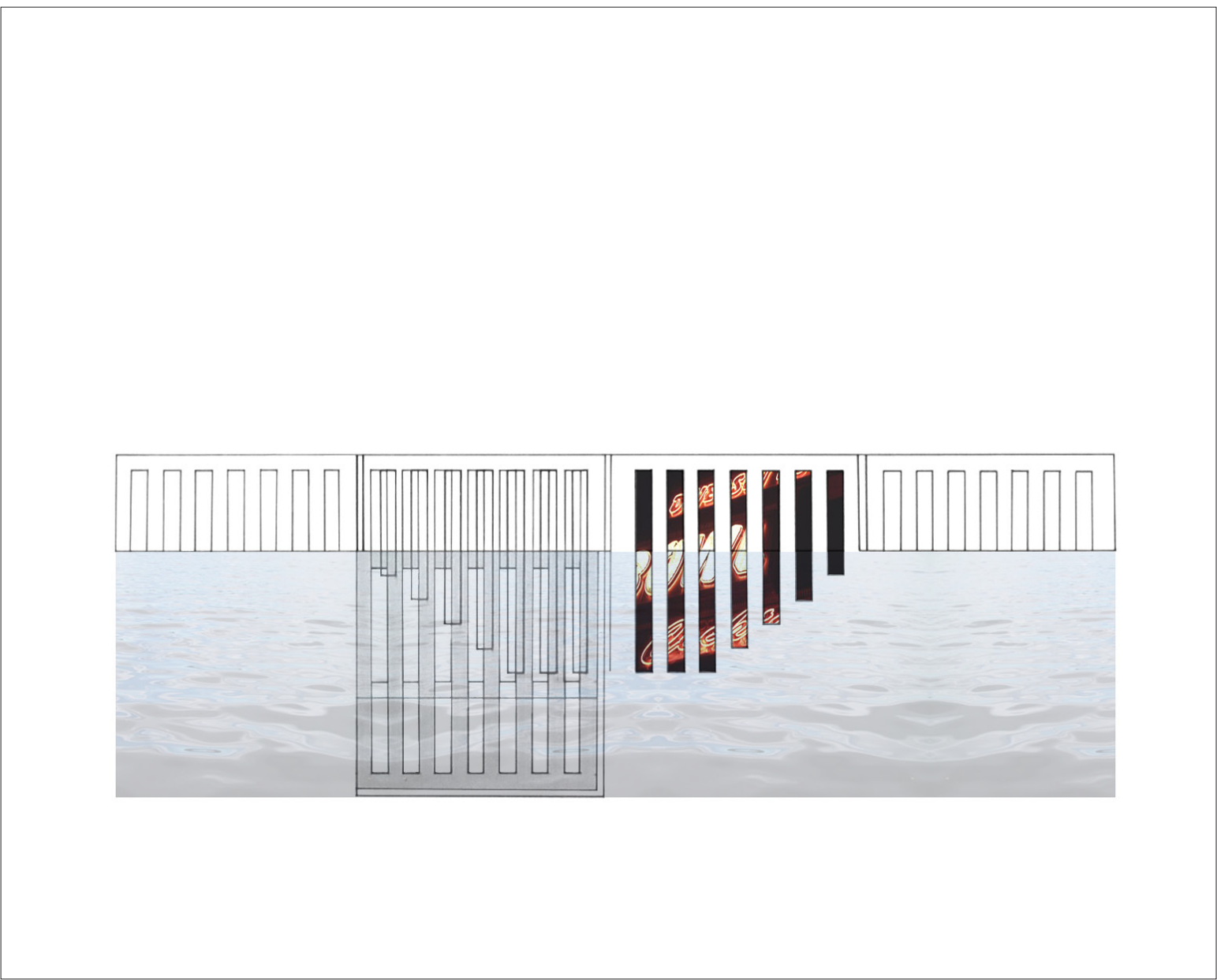
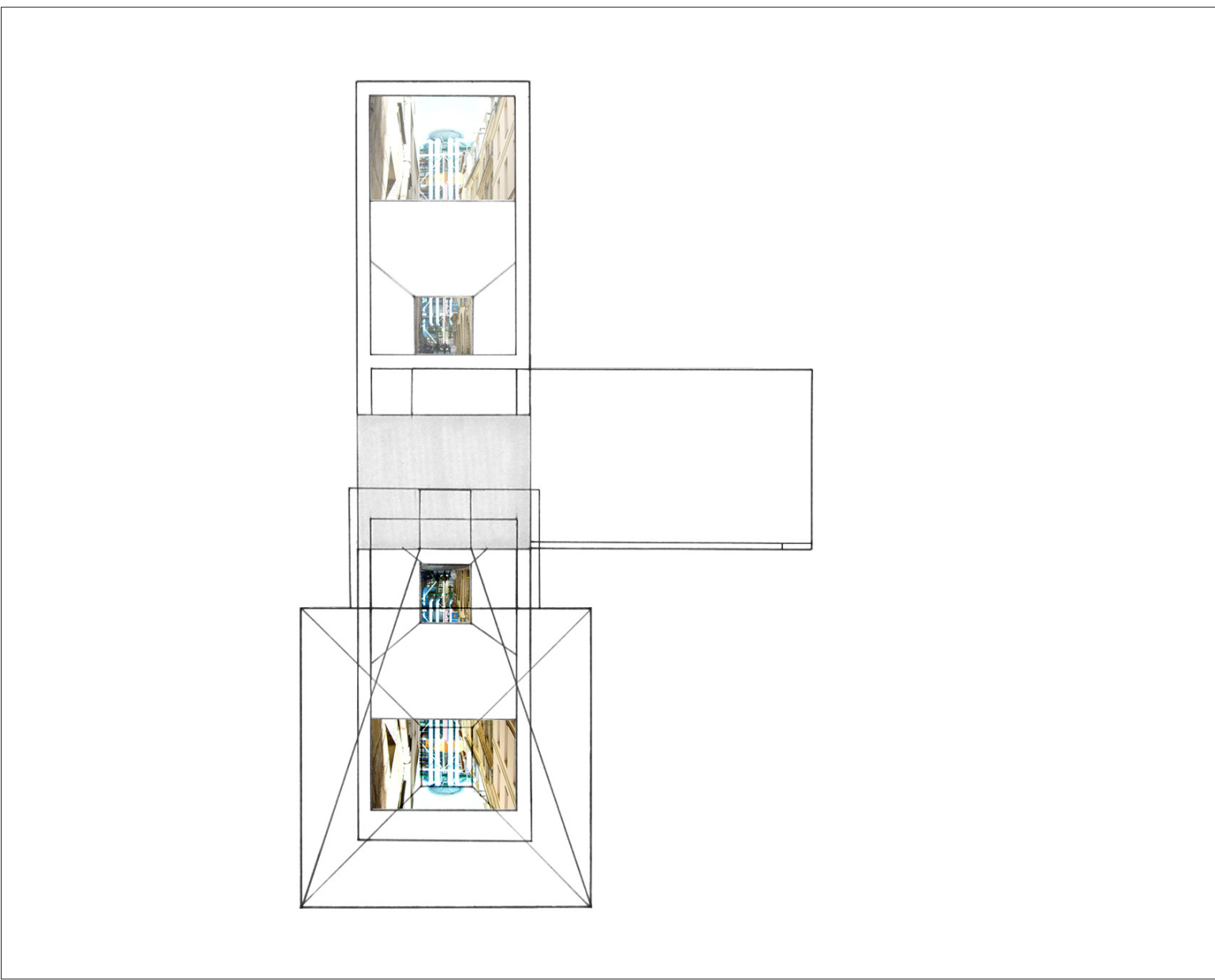
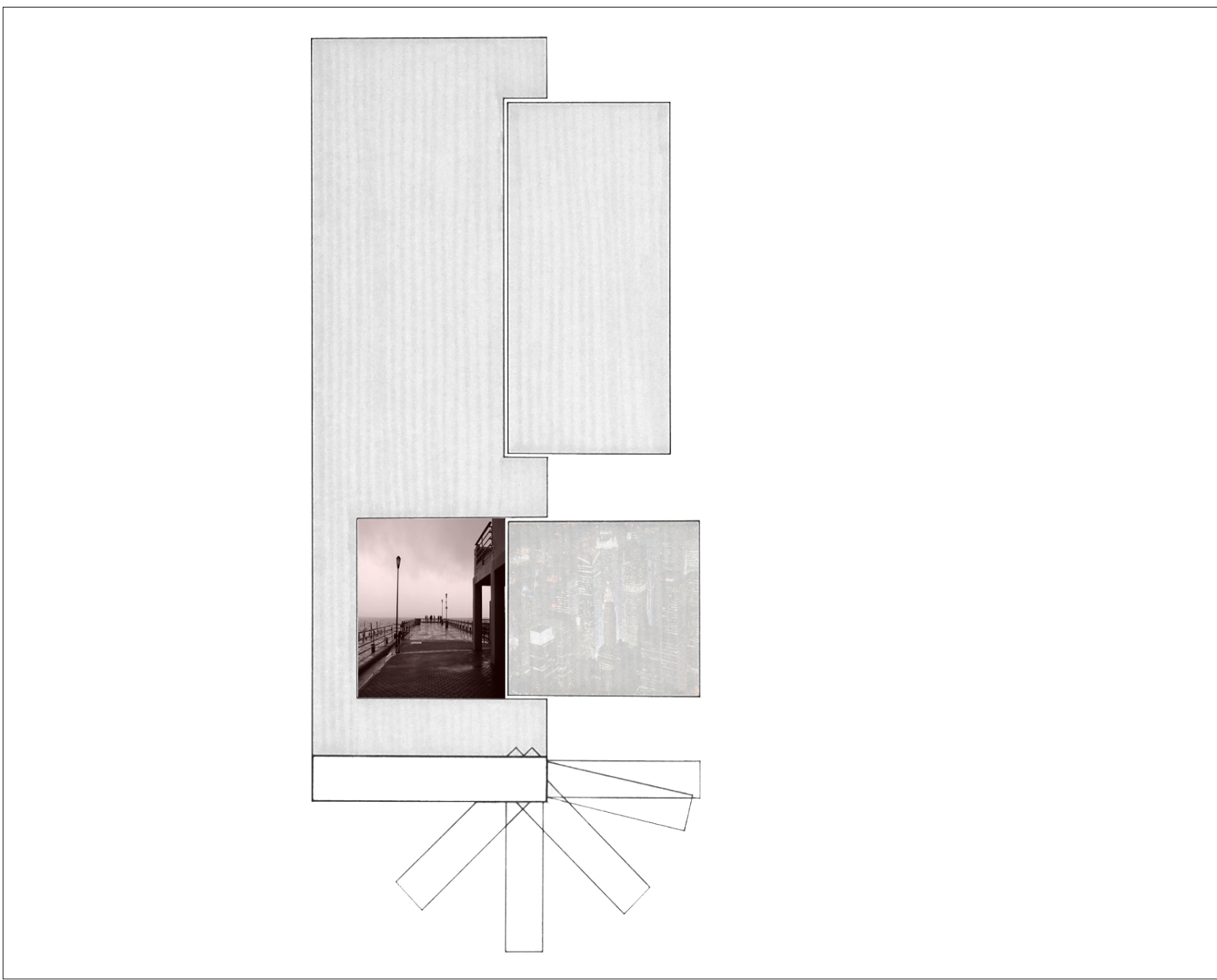
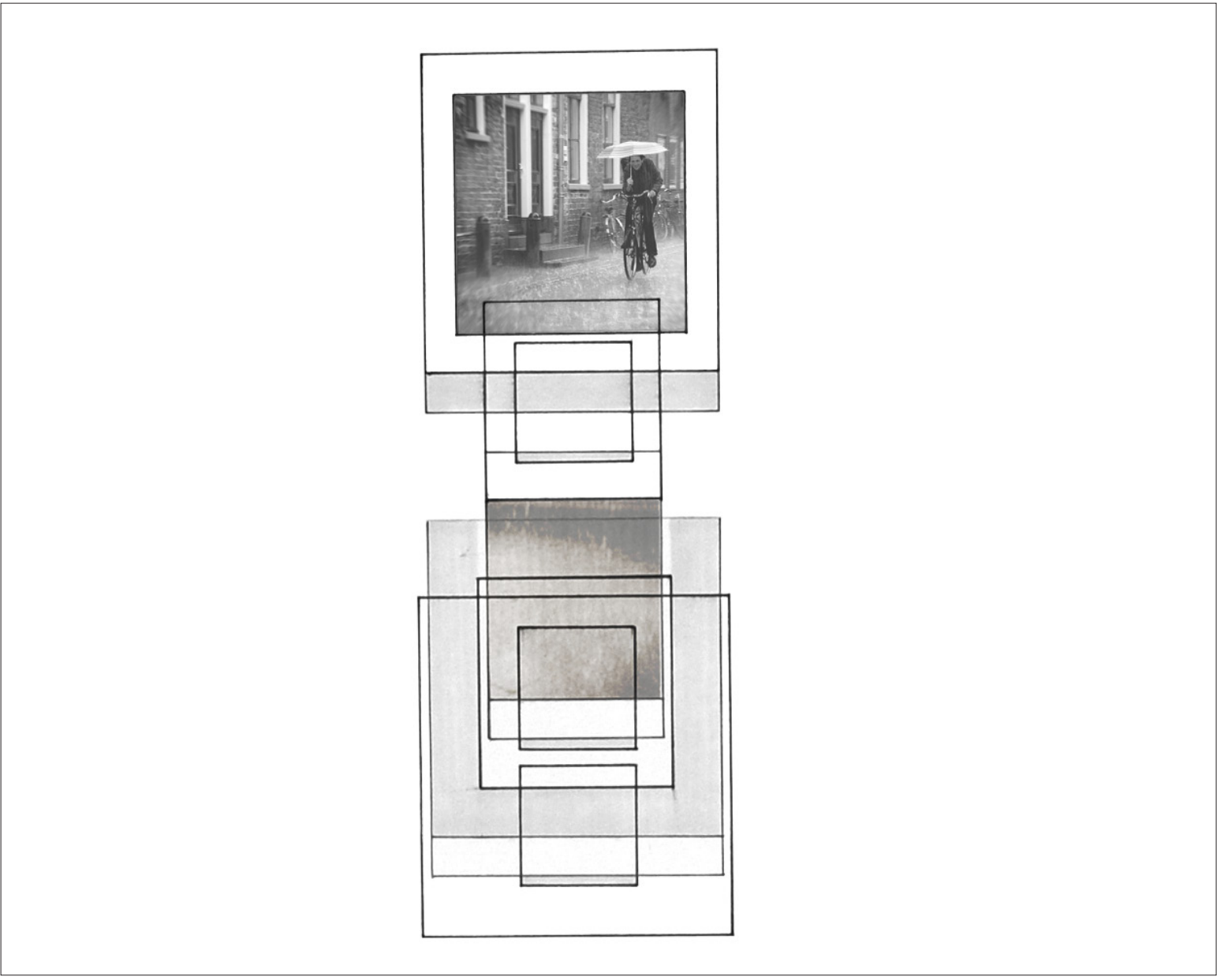
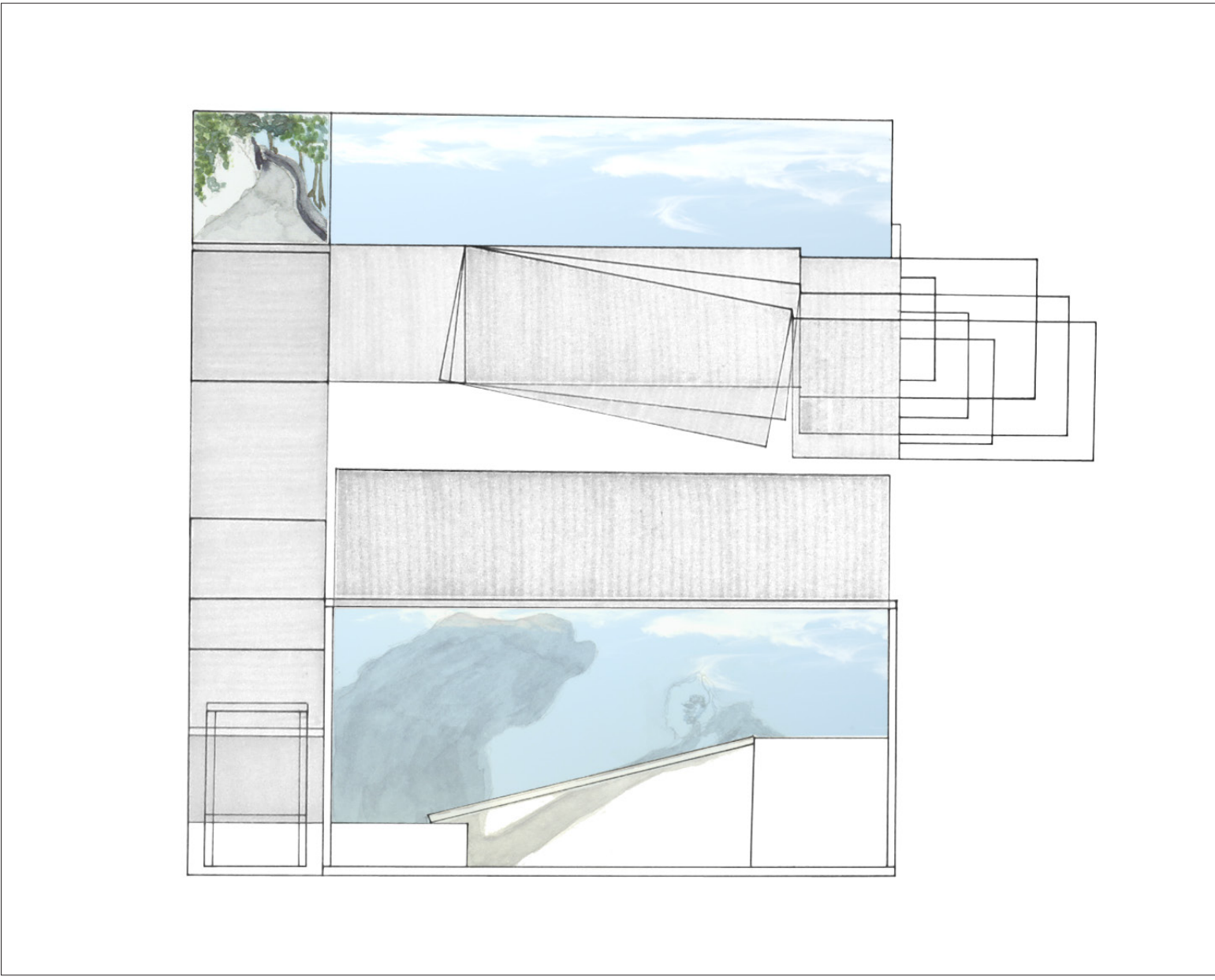
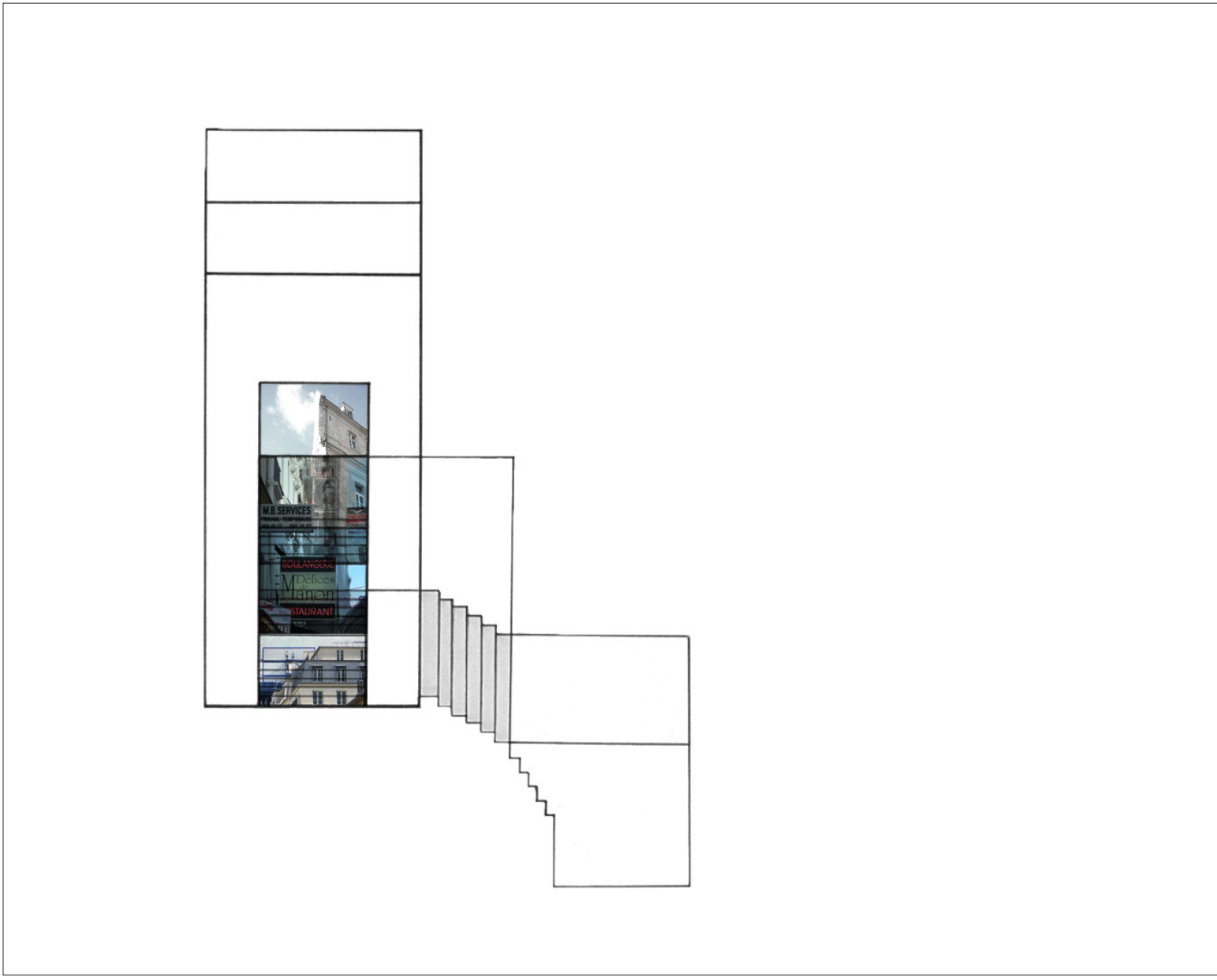


Commentary on education: examination of the experience of subject (space) and its relation to the object (place). Space is formed by a subject. Place is independent of subject. Space is formed by novels, films, photographs, stories, and memories as much as it is by its physical environment. Each subject defines the space differently each time he experiences and moves through it. To claim that one experience is real or that one perspective is the definitive reality of a place is absurd. Analytical architectural drawing begins to erode the subjective point of view by offering multiple views simultaneously. Plans and sections depict not our experienced reality but a reality of the object. By unfolding all surfaces of the object into one, a more complete reality of the object is revealed (pamphlet-drawing #3).



“Space
is a practiced
Place”
--Michel de Certeau

Island of Manhattan meets Hudson River, people engage, water moves, time passes
The meeting of two datums: land and water



Space is a subjective place. A perspective drawing depicts the experience of the object seen from one point of view (pamphlet-drawing #2); a subject's movement, depicted as an unfolded drawing of a path, introduces time into the experience of the object (pamphlet-drawing #4). A subject's view within the space of an object portrays the experience of the subject (pamphlet-drawing #1); a subject's unfolded path drawn with images of connotations and temporal conditions represents a more comprehensive view of the experience of the subject (pamphlet-drawing #5). Thoughts and experiences are framed by the object as they are affected by it but not necessarily related to it.

