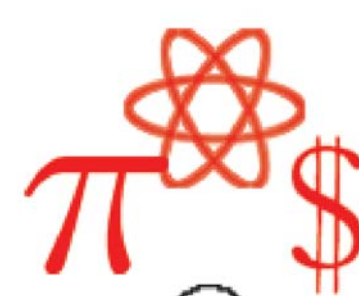
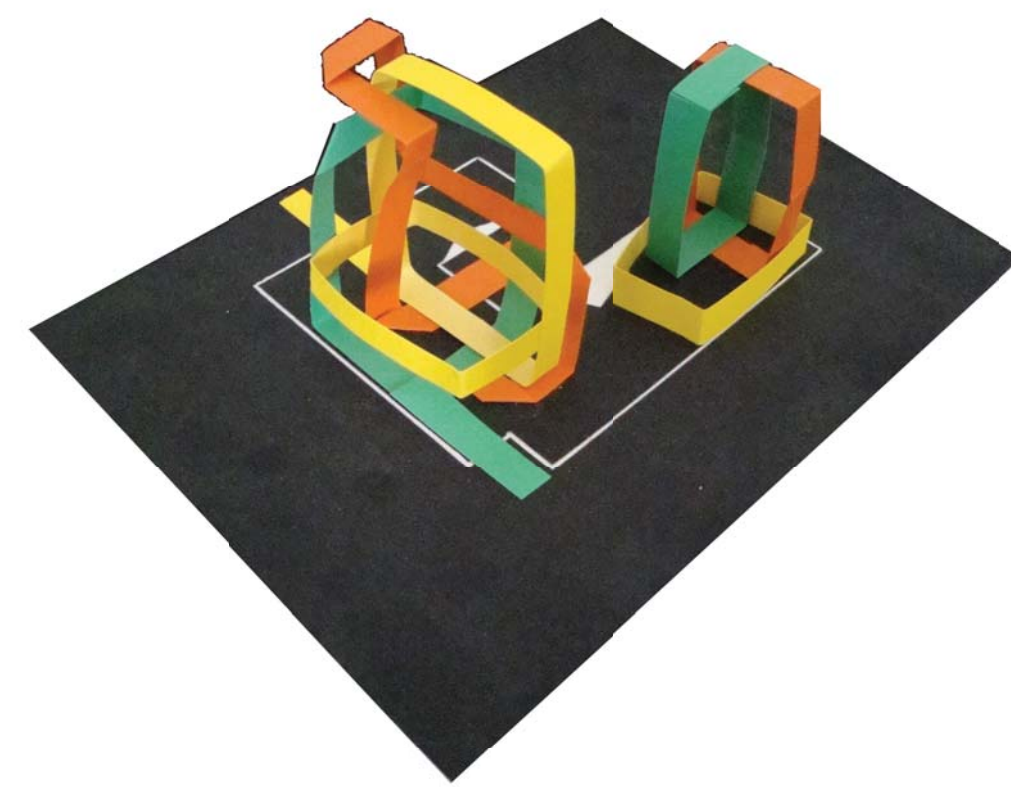
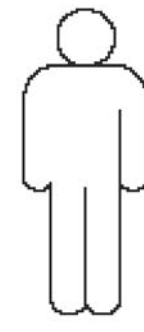
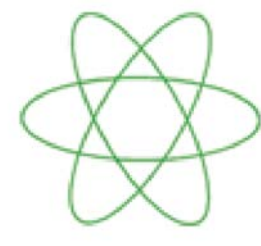
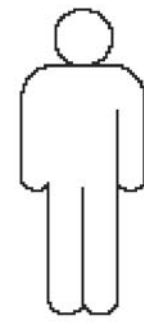


CENTER FOR INTERDISCIPLINARY EDUCATION

ACADEMIC BUILDING - MONMOUTH COLLEGE (IL).

THE PROGRAM MERGES THE DISCIPLINES OF BUSINESS, MATHEMATICS, AND SCIENCE WITH EMPHASIS ON THE NECESSARY COLLABORATION TO ACHIEVE A SUCCESSFUL LIBERAL ARTS EDUCATION.

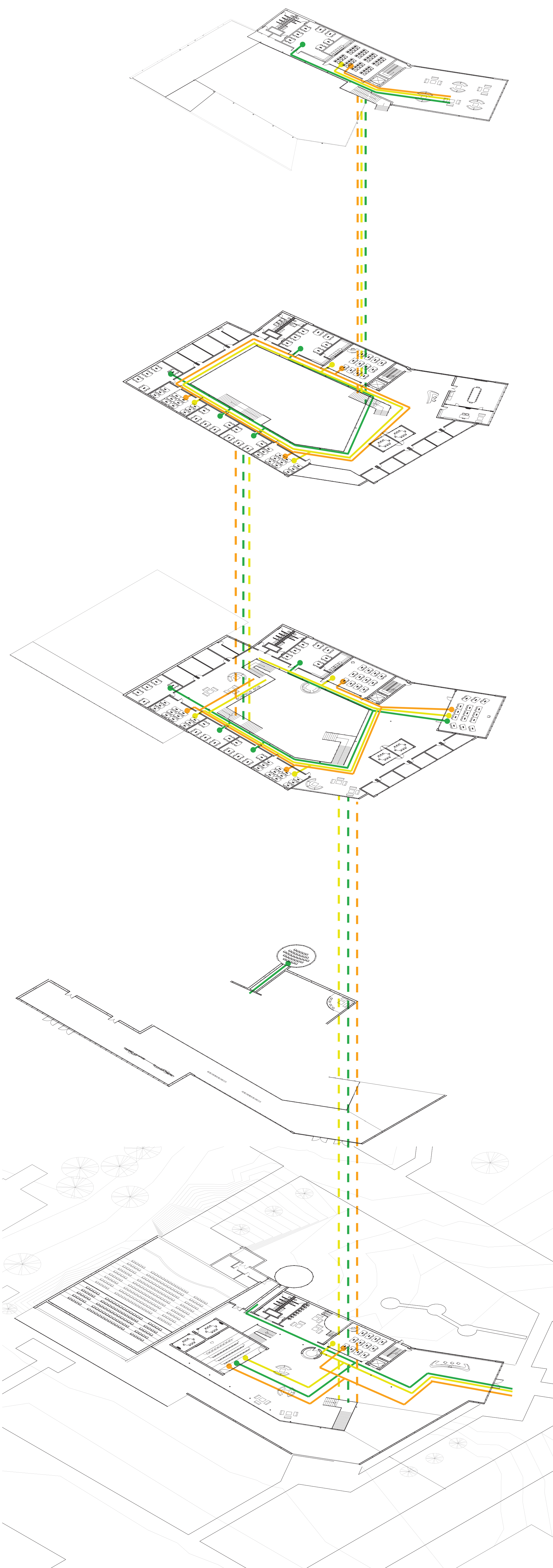
SHARED SPACES, EXPOSED FACULTY OFFICES AND STUDIES, AND GUIDED CIRCULATION ARE INTENDED TO INCREASE INTERACTION AMONG STUDENTS AND FACULTY.



CONVENTIONAL EDUCATION SEPARATES DISCIPLINES AND LIMITS EXPOSURE TO OTHER FIELDS, HENCE HINDERING STUDENTS' LEARNING CAPACITY.

DNA *CONCEPTUAL MODEL
LABS AND CLASSROOMS FROM ALL DISCIPLINES ARE DISPERSED TO CREATE EXPOSURE THROUGH CIRCULATION.

AN EVOLVING CURRICULUM, AND A FACILITY THAT ENCOURAGES INTER-DISCIPLINARY COLLABORATION WILL RESULT IN A BROADER EDUCATION.

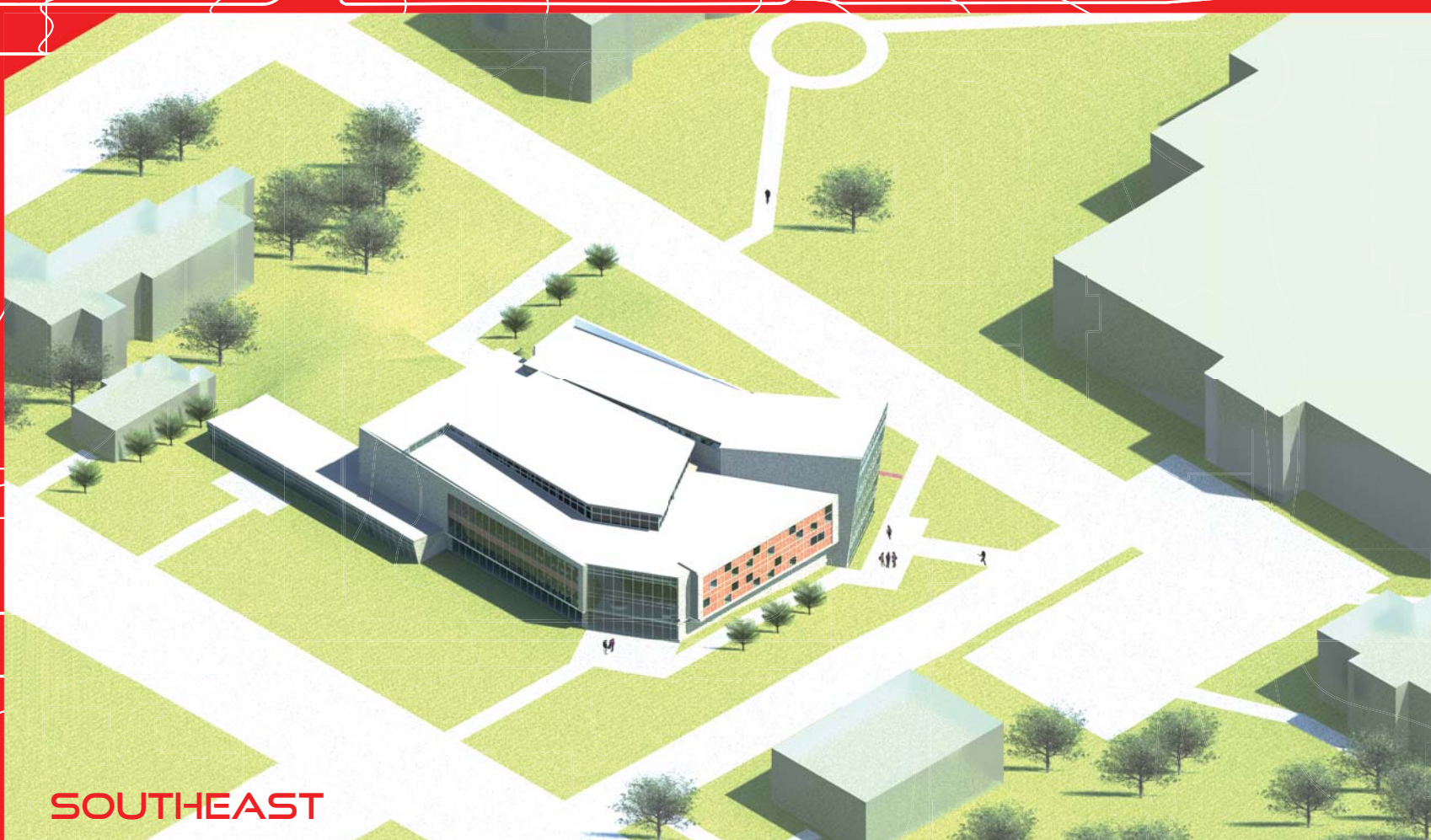


MONMOUTH COLLEGE

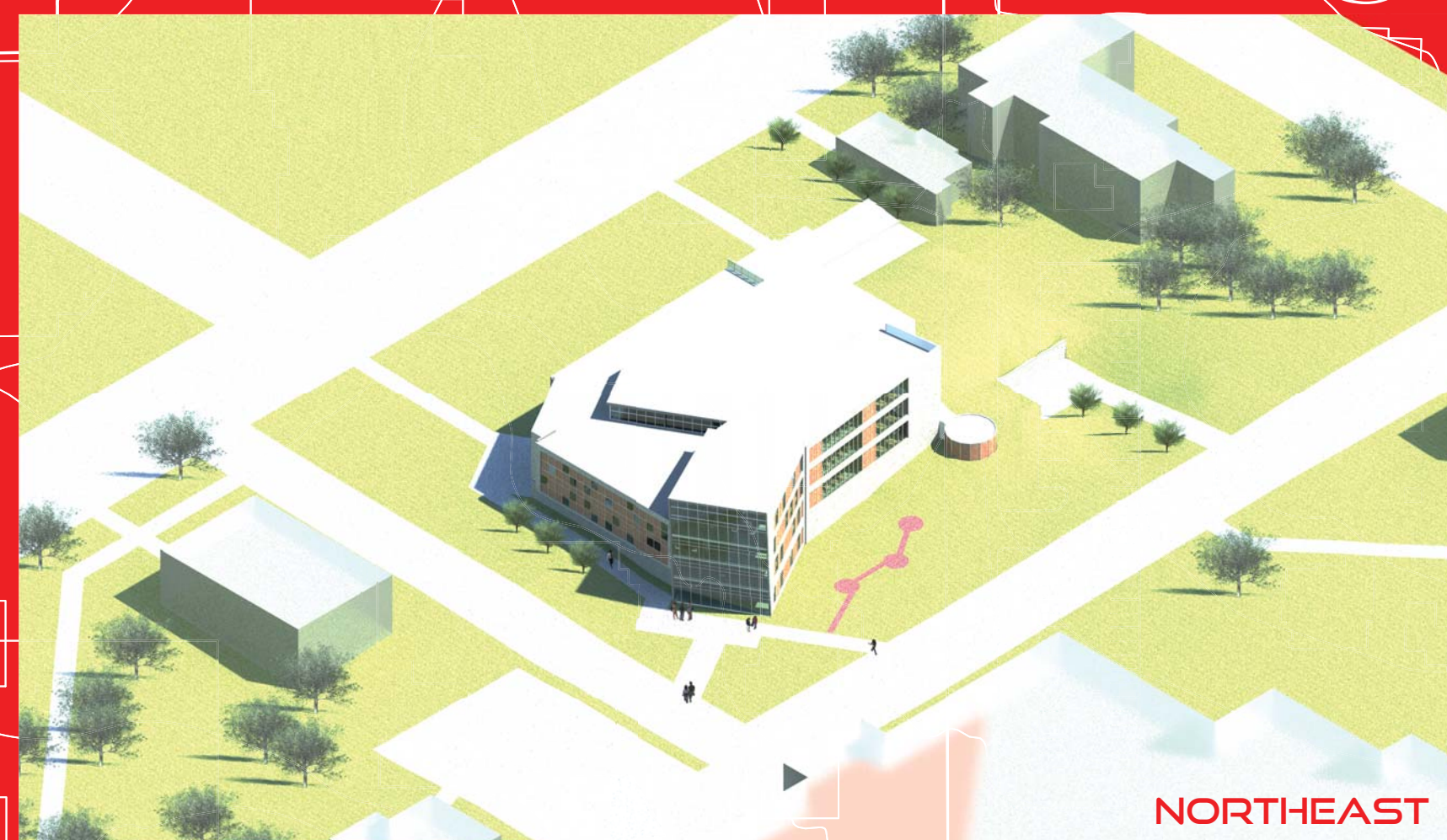


COMMON ENTRANCE

THE ICONIC ENTRY CULMINATES THE CULTURAL TRANSFORMATION MONMOUTH COLLEGE WILL UNDERGO BY INTEGRATING DISTANT DISCIPLINES INTO A COMPREHENSIVE EDUCATION.



SOUTHEAST

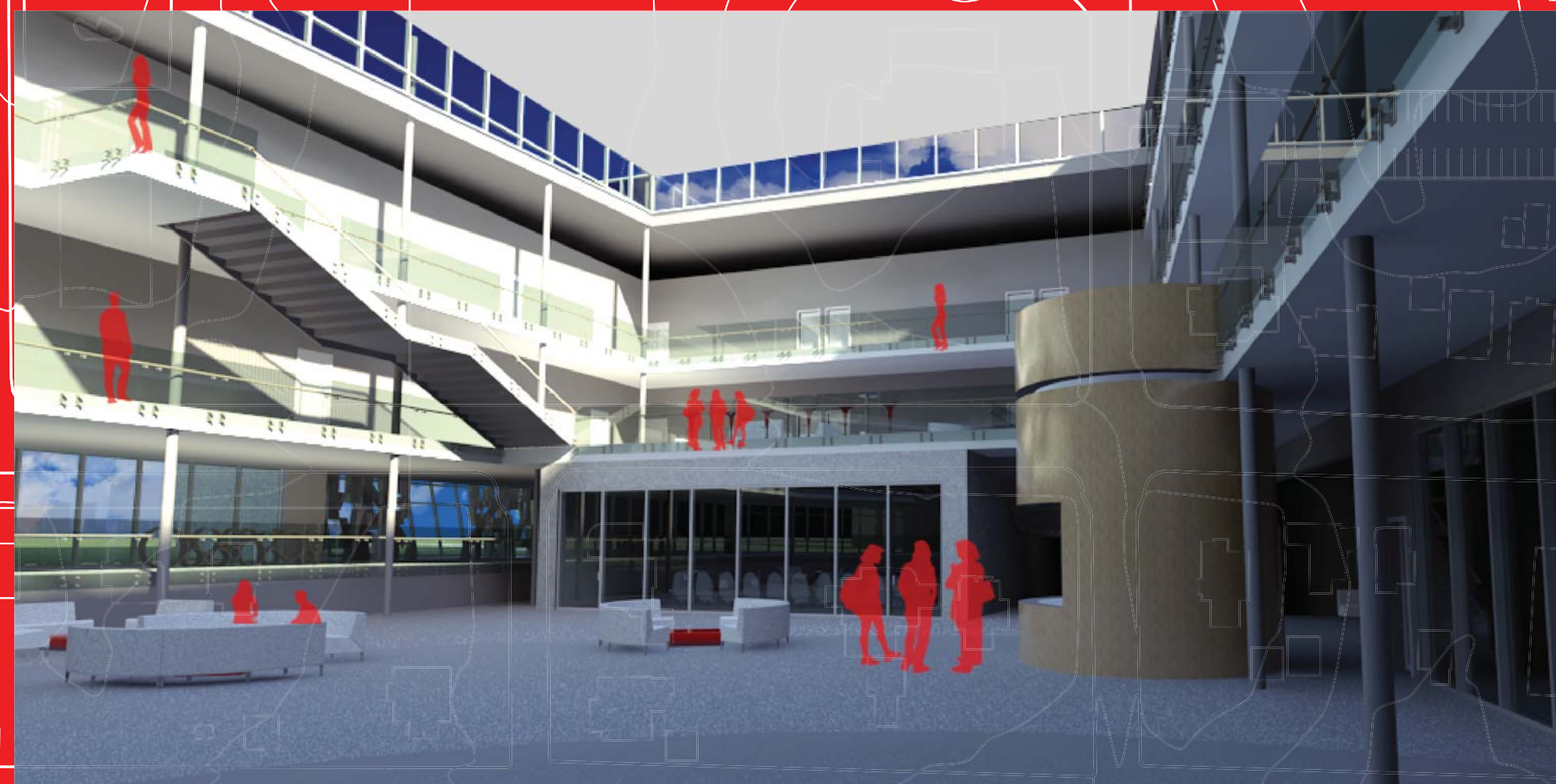


NORTHEAST

THE NEW ACADEMIC FACILITY IS LOCATED AT THE EDGE OF CAMPUS, CREATING A NEW FACE FOR MONMOUTH COLLEGE. THE MERGING OF THE THREE DISCIPLINES WILL RESTRUCTURE CAMPUS CULTURE BY DIRECTING OVER 80% OF STUDENT TRAFFIC TO ONE COMMON PLACE.



THE BUILDING'S ATRIUM PROVIDES VARIOUS LOUNGES AND STUDY AREAS WHILE MAINTAINING VISUAL CONNECTIONS AMONG STUDENTS.



STAIRS ARE SHIFTED FROM FLOOR-TO-FLOOR IN ORDER TO ENCOURAGE INTERACTION AND EXPOSURE THROUGH HORIZONTAL CIRCULATION.

