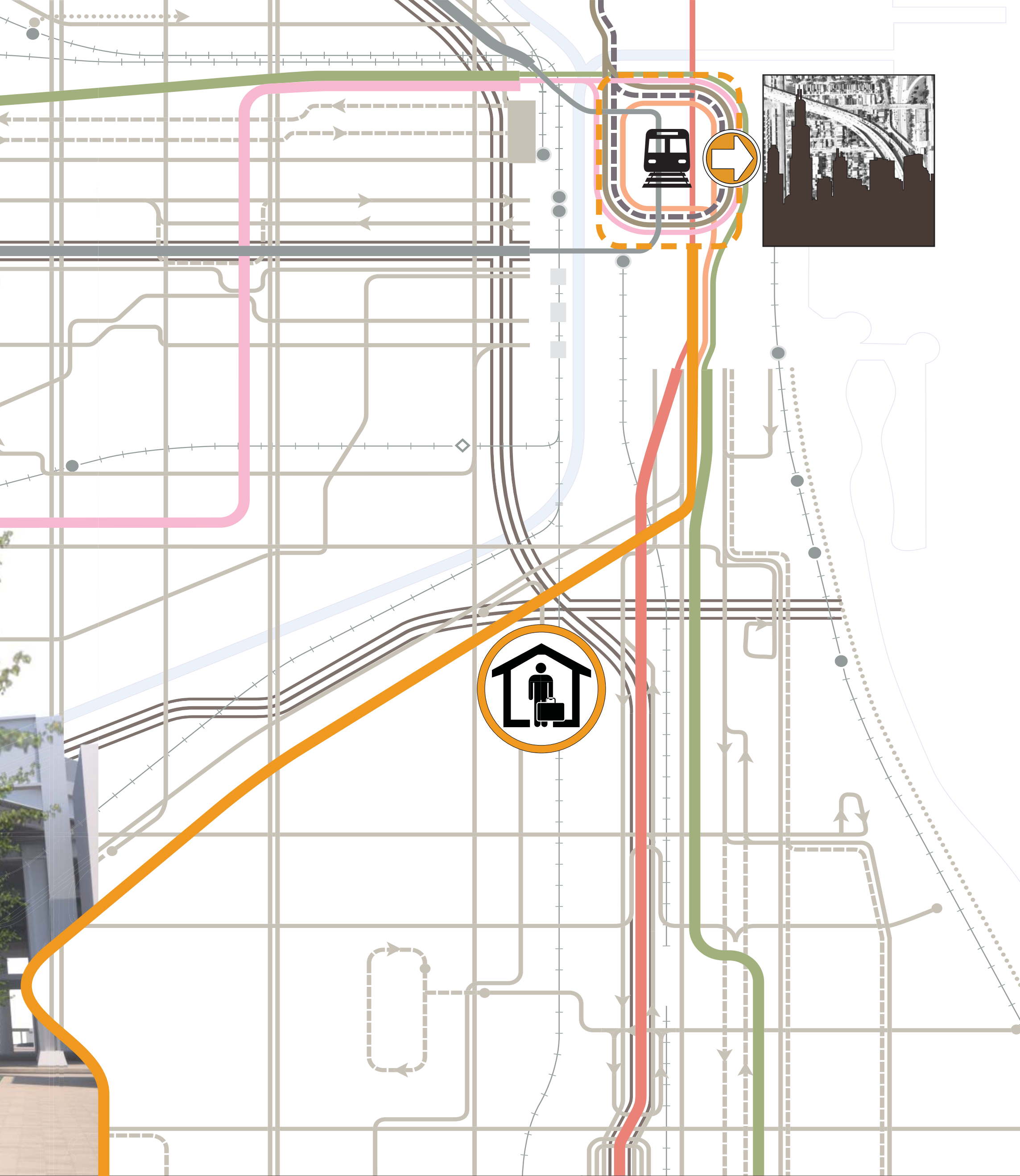
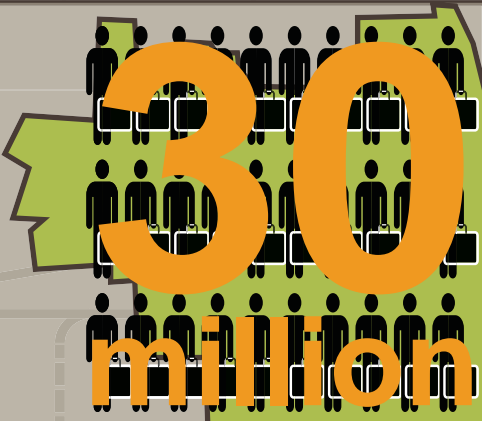


HOSTEL SPACES



This year **30 million** tourists will come to Chicago.



Within the city **5** hostels share the duty of providing cost effective lodging for many of these travelers.

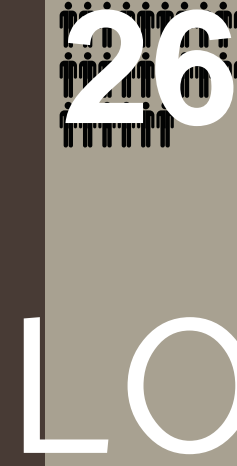


5

hostels share the duty of providing cost effective lodging for many of these travelers.



45
NYC



26
LON

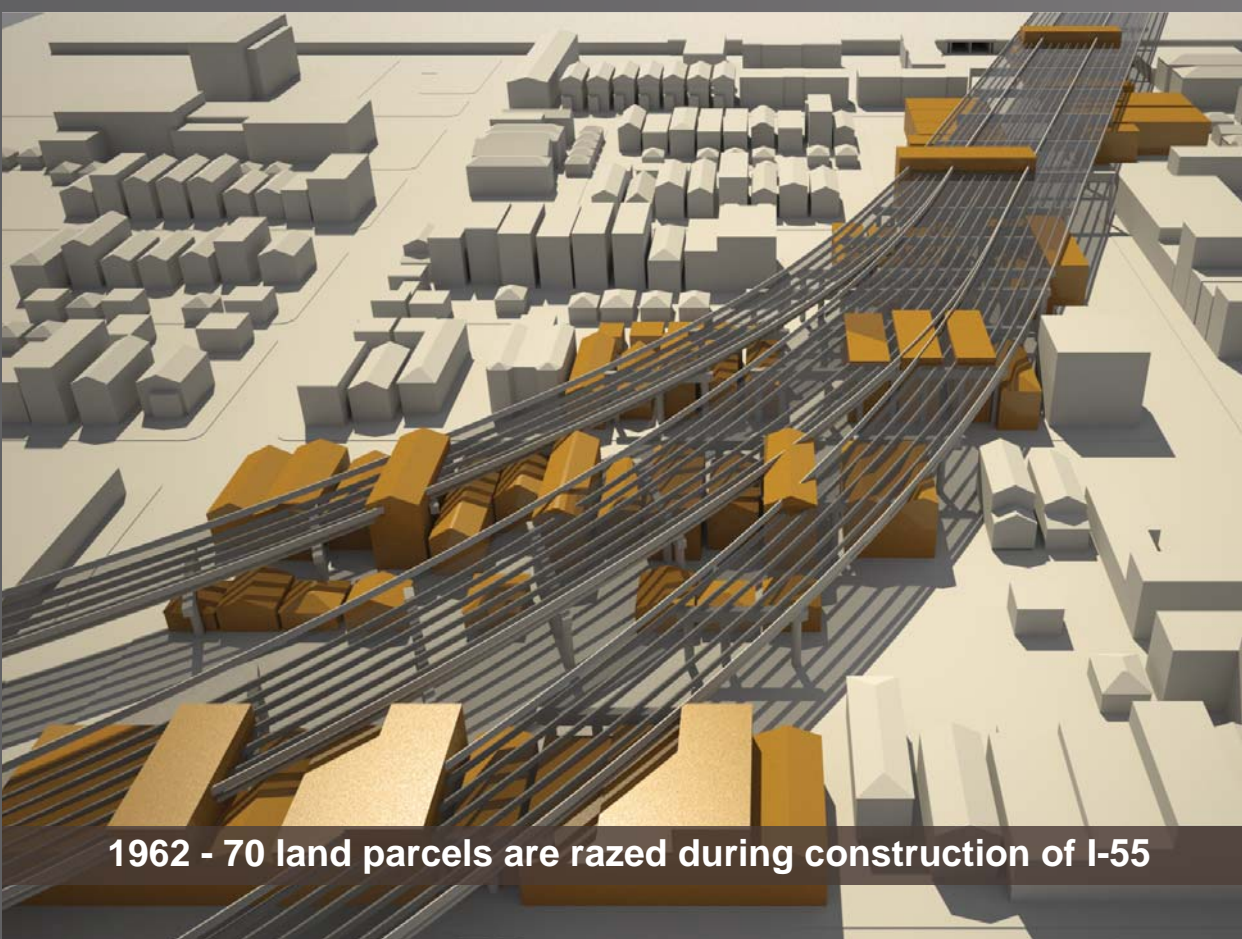


8
BER

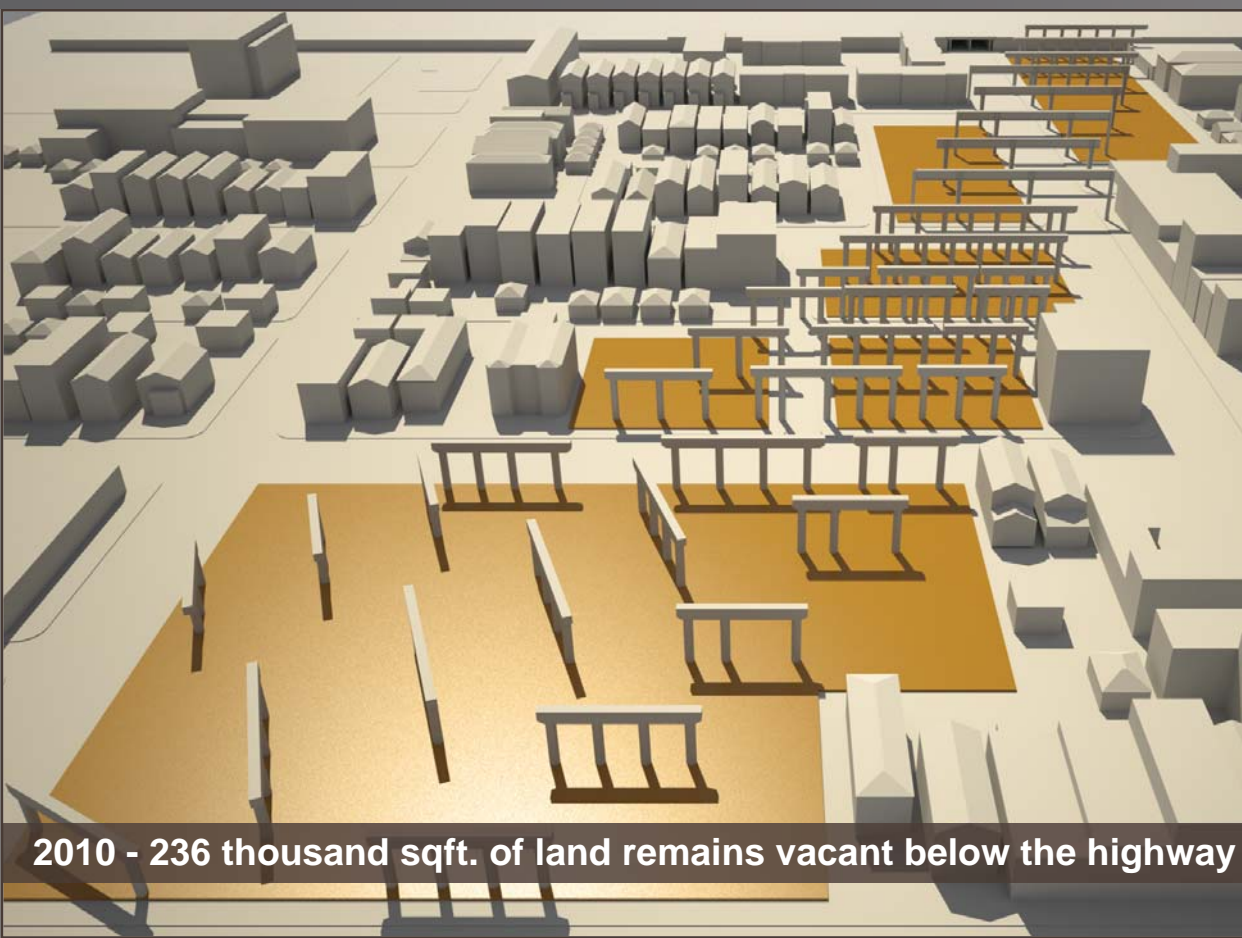
Eclipsed by comparison to nearly every other global city.



1960 - Armour Square Community, South of downtown Chicago

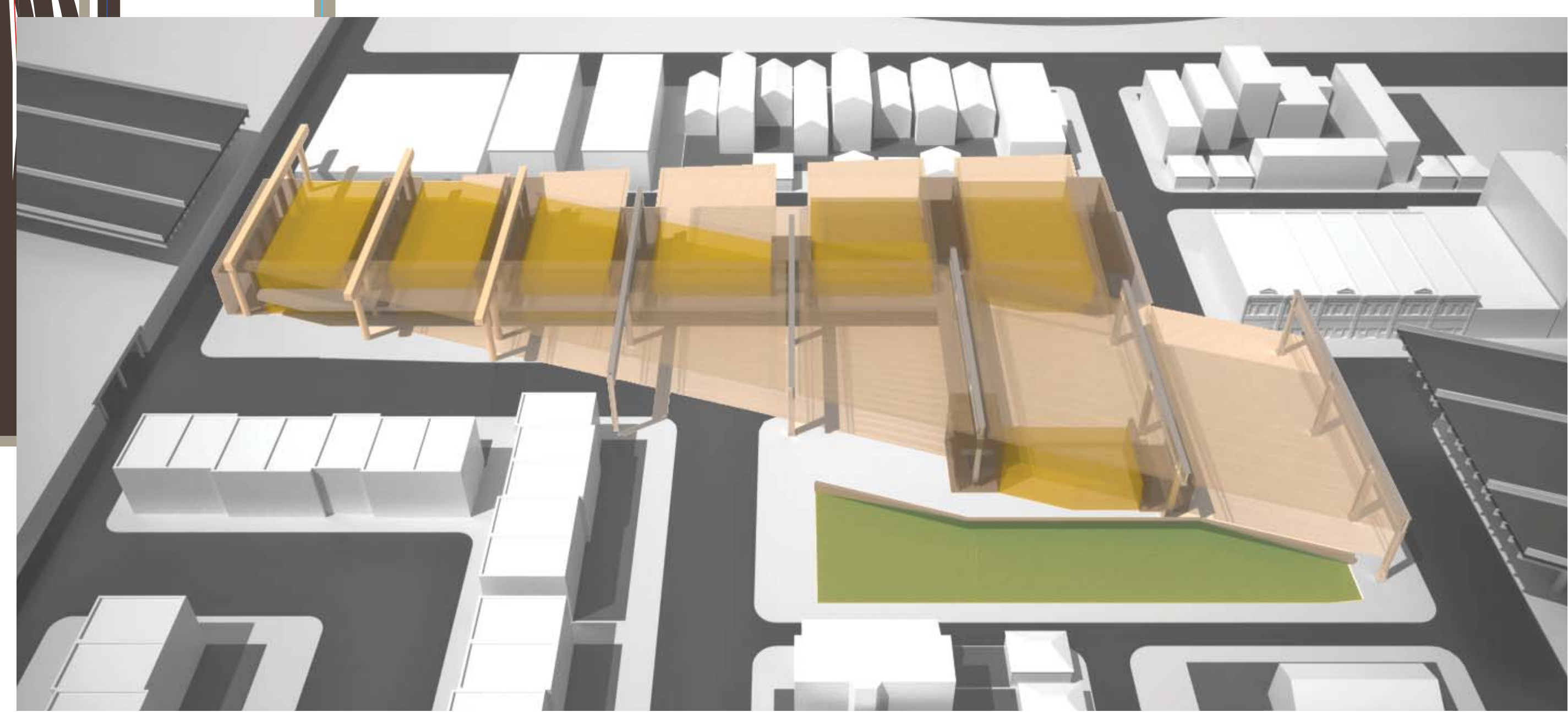


1962 - 70 land parcels are razed during construction of I-55



2010 - 236 thousand sqft. of land remains vacant below the highway

On the outskirts of Chicago, an acrobatic display of civil engineering embodies the potential to become a hostel space. At the crossroads of interstates I-90 and I-55 the collision of high speed thoroughfares is mitigated through a complex ballet of elevation changes via ramps and overpasses. Beneath these concrete ribbons is vacant land, inhabited only by shadows and columns.



To make the hostile hospitable, the Hostel Spaces concept seeks to reclaim places filibustered by highway infrastructure and give communities the choice to embrace, or transcend the social, physical and psychological boundaries they have embodied for decades. For the South Chicago Hostel this concept will connect people to the city by re-connecting a community.

