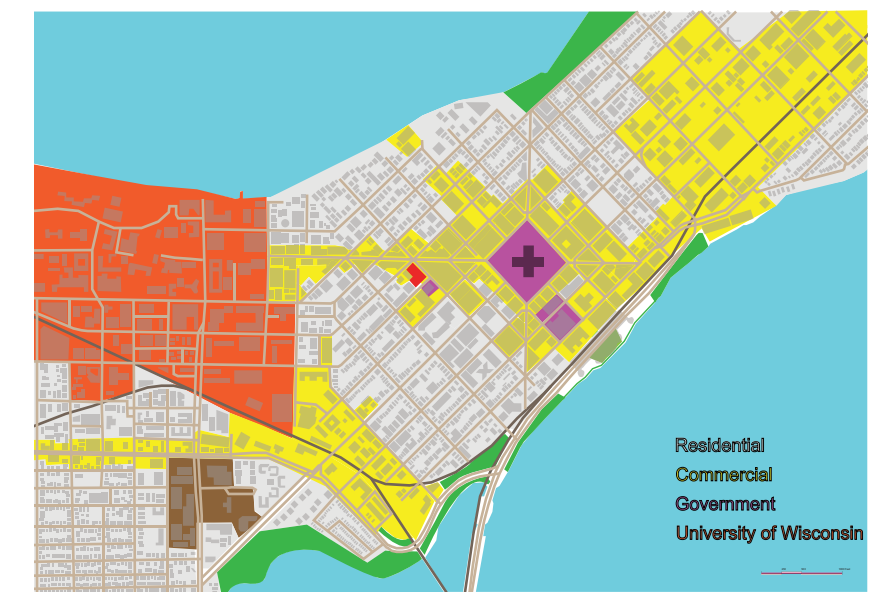


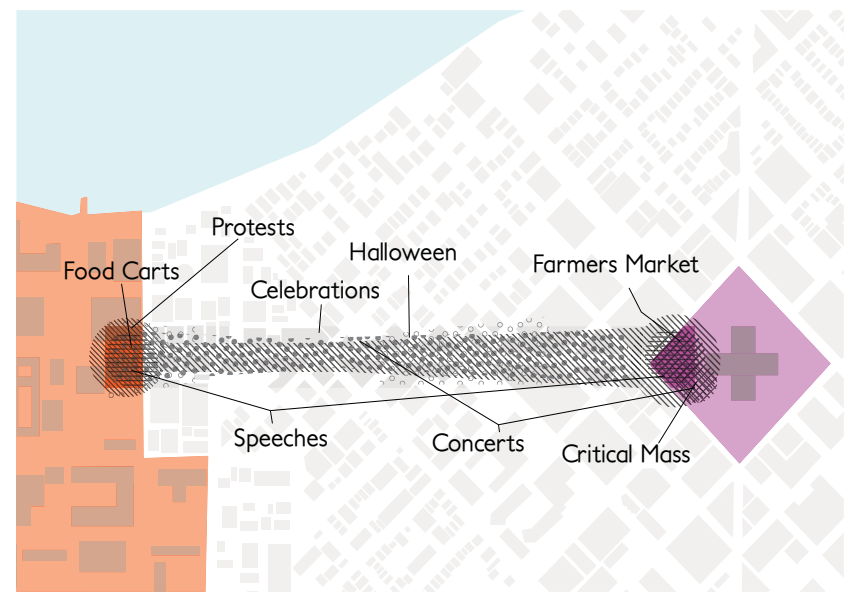
# Defining the Role of the 21st Century Public Library in Madison

Madison, Wisconsin is dominated by two main forces; the state government in the center of the isthmus, and the University of Wisconsin to the west. These two institutions are linked by State Street, a pedestrian and bike corridor. State Street serves as the main public gathering space for the city. Celebrations, protests, and gatherings form and travel along its length between the University and Capital.

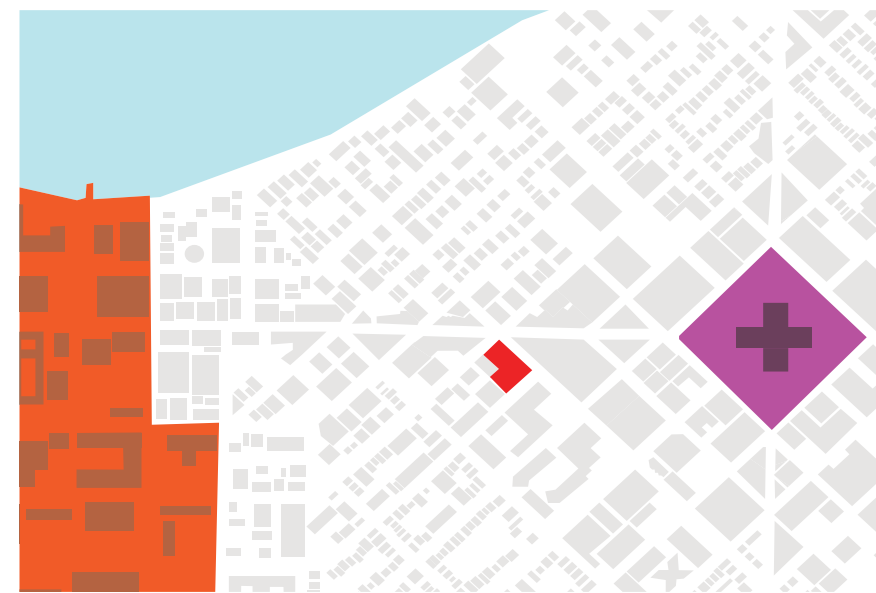
While these two institutions represent Madison, neither one are truly public. The placement of the new Central Public Library along this strip will provide a free, democratic space for all Madison citizens. Beyond collecting books and storing media, the Madison Library offers opportunities for gatherings and informational exchanges 24 hours a day.



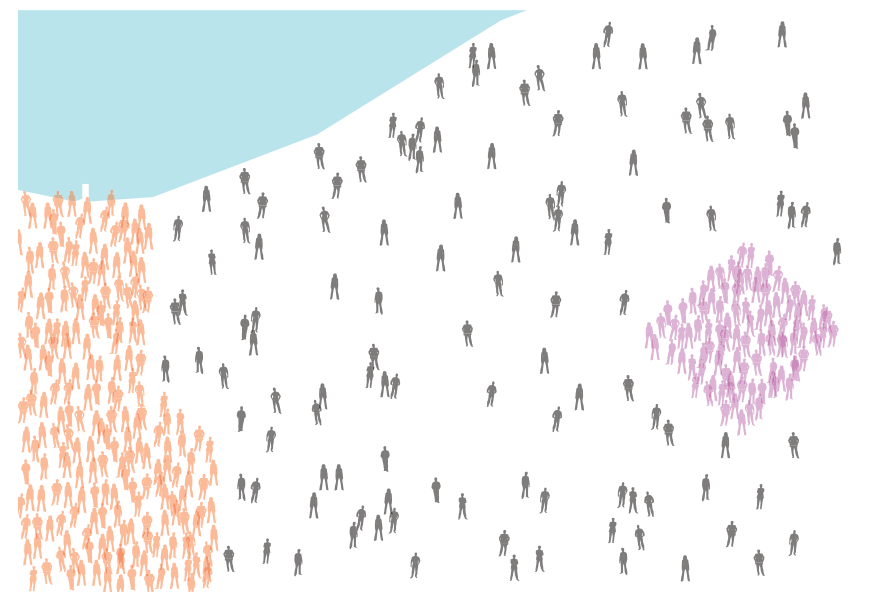
Current Condition



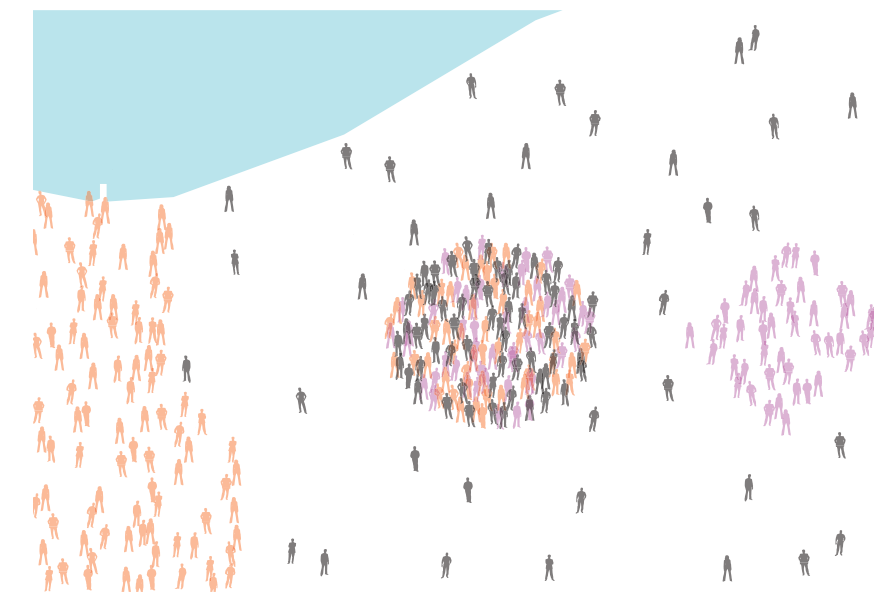
State Street



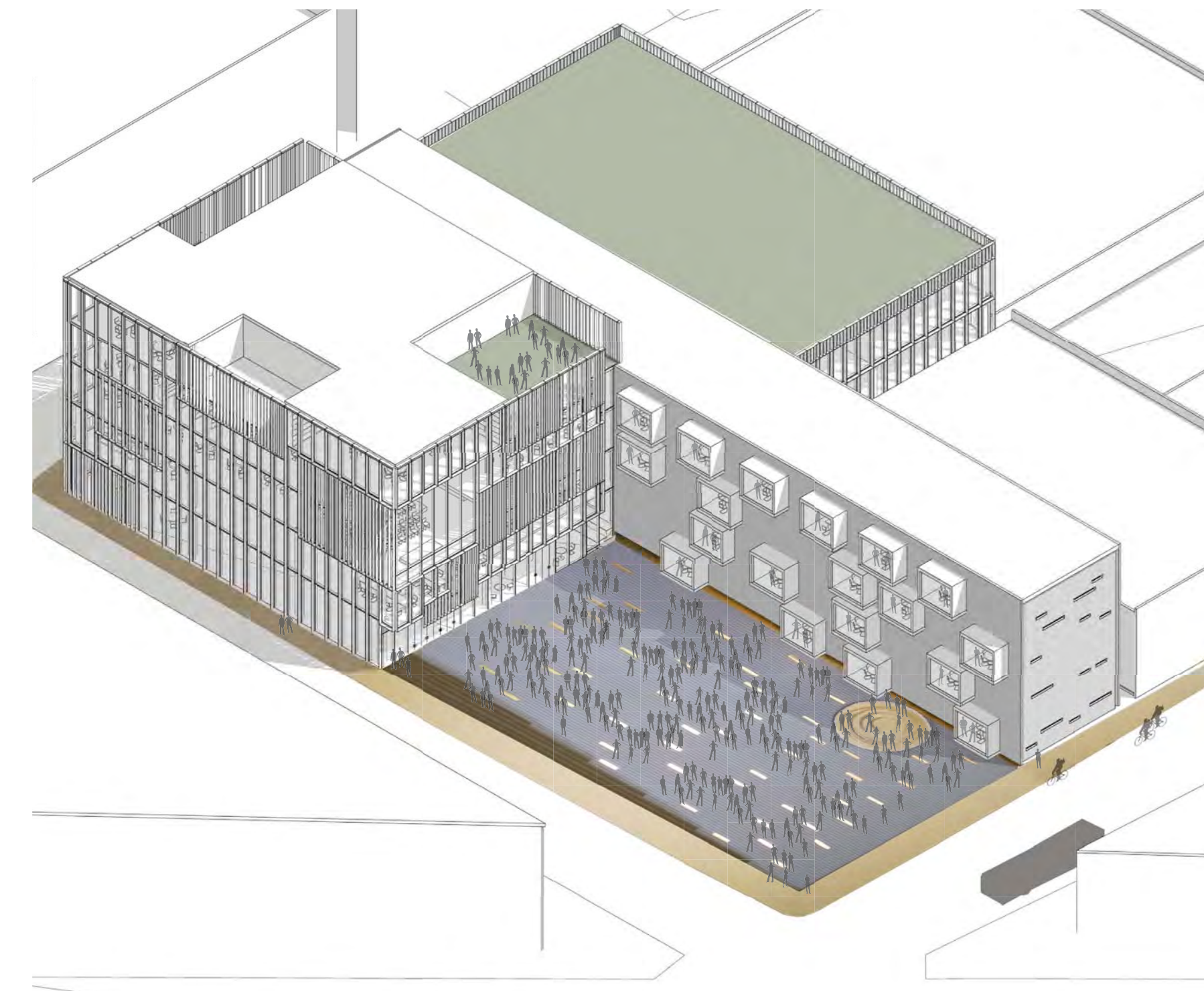
University and Capital



Current Grouping



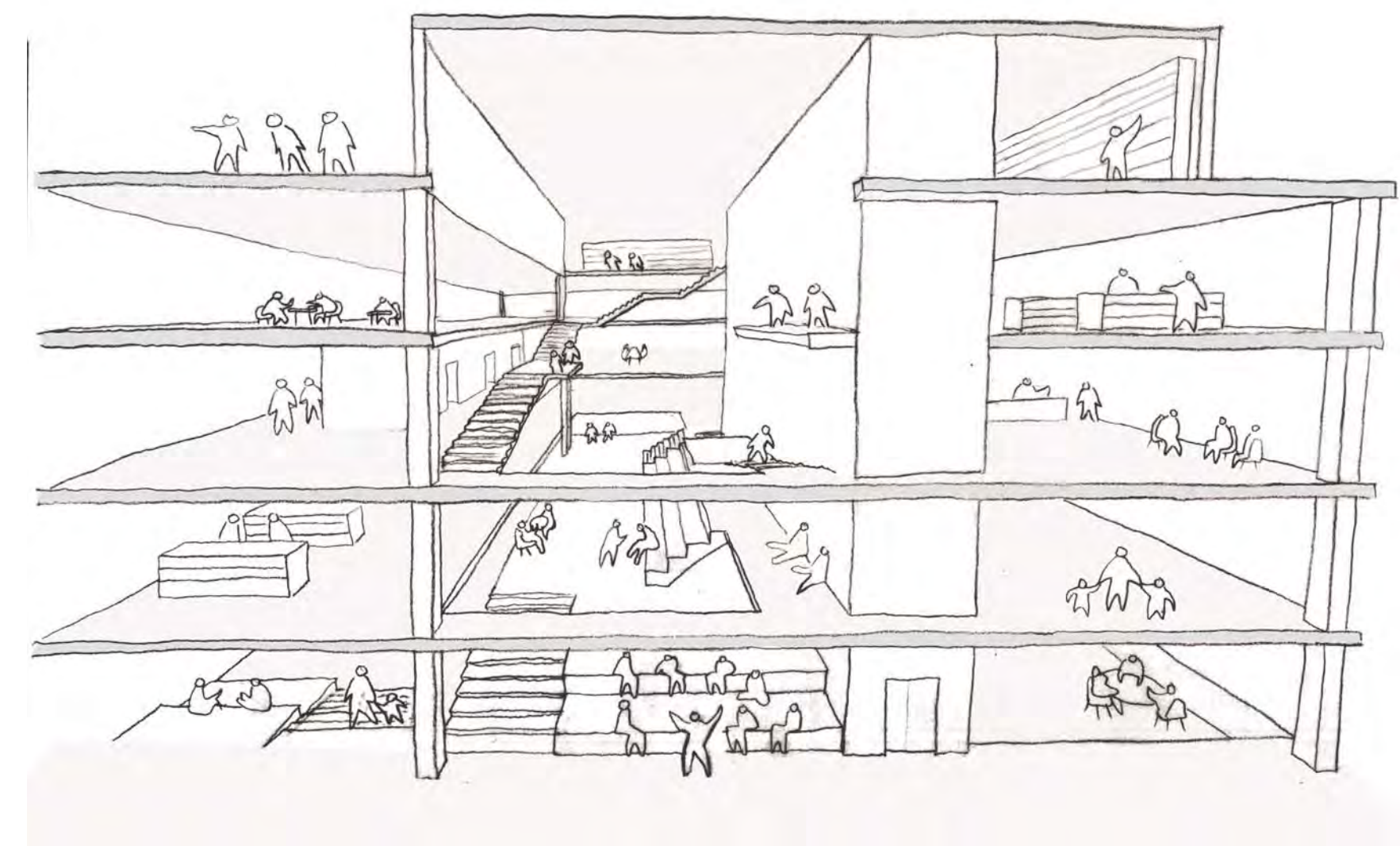
Library as New Node



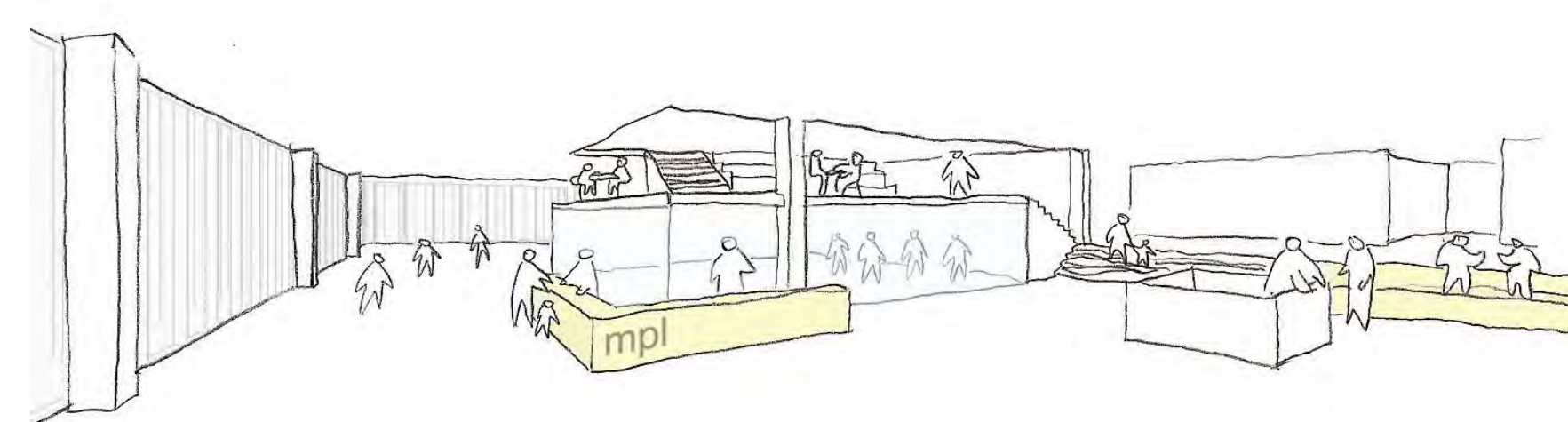
State Street Plaza



Main Circulation / Meeting



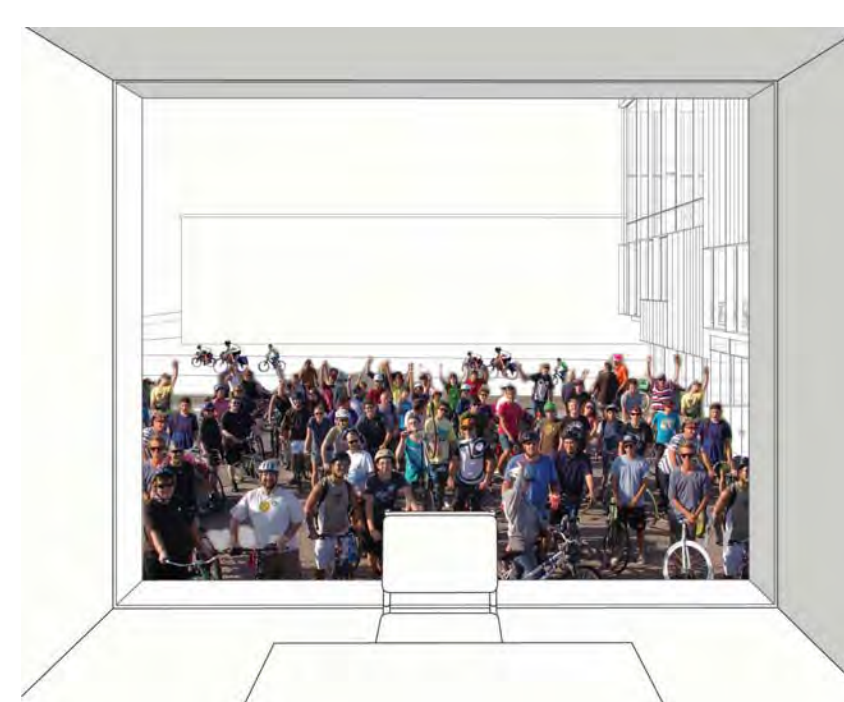
Main Circulation / Meeting



Entry and Event Space



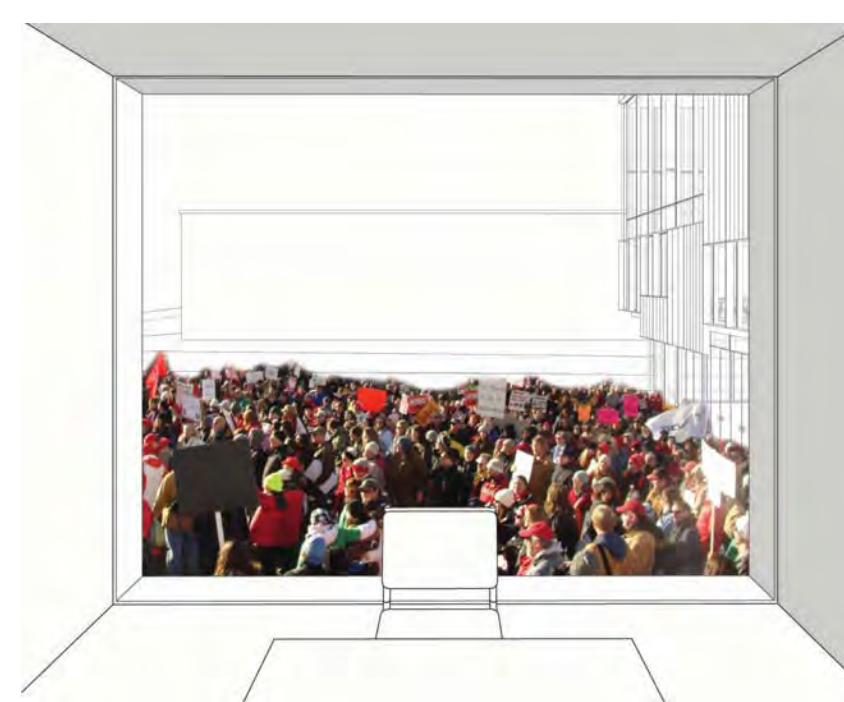
Winter



Spring

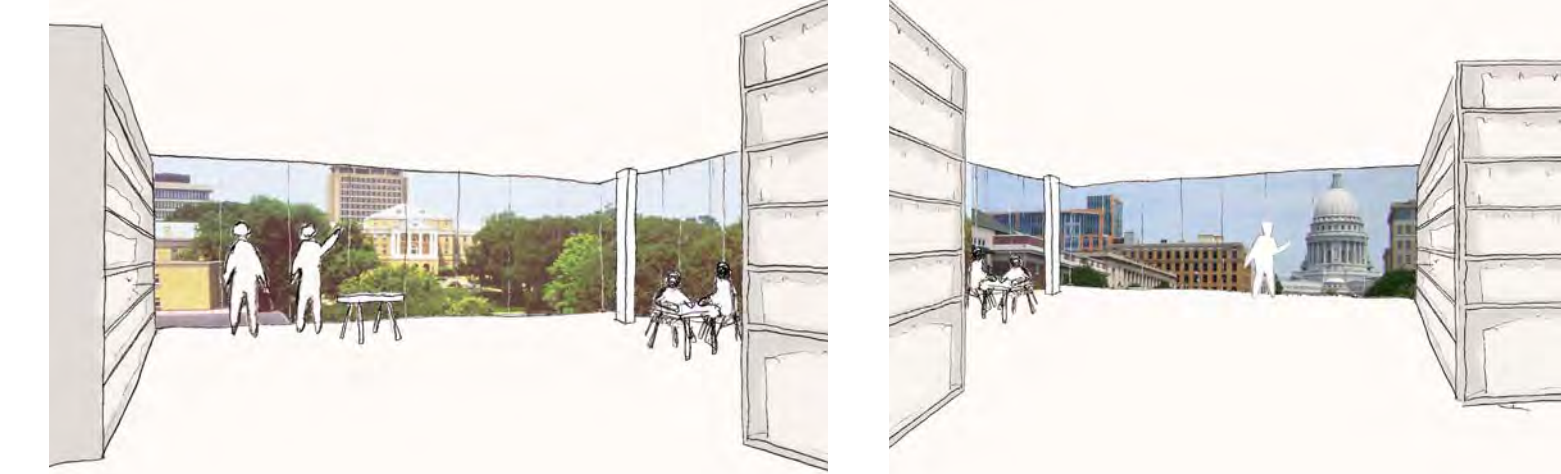
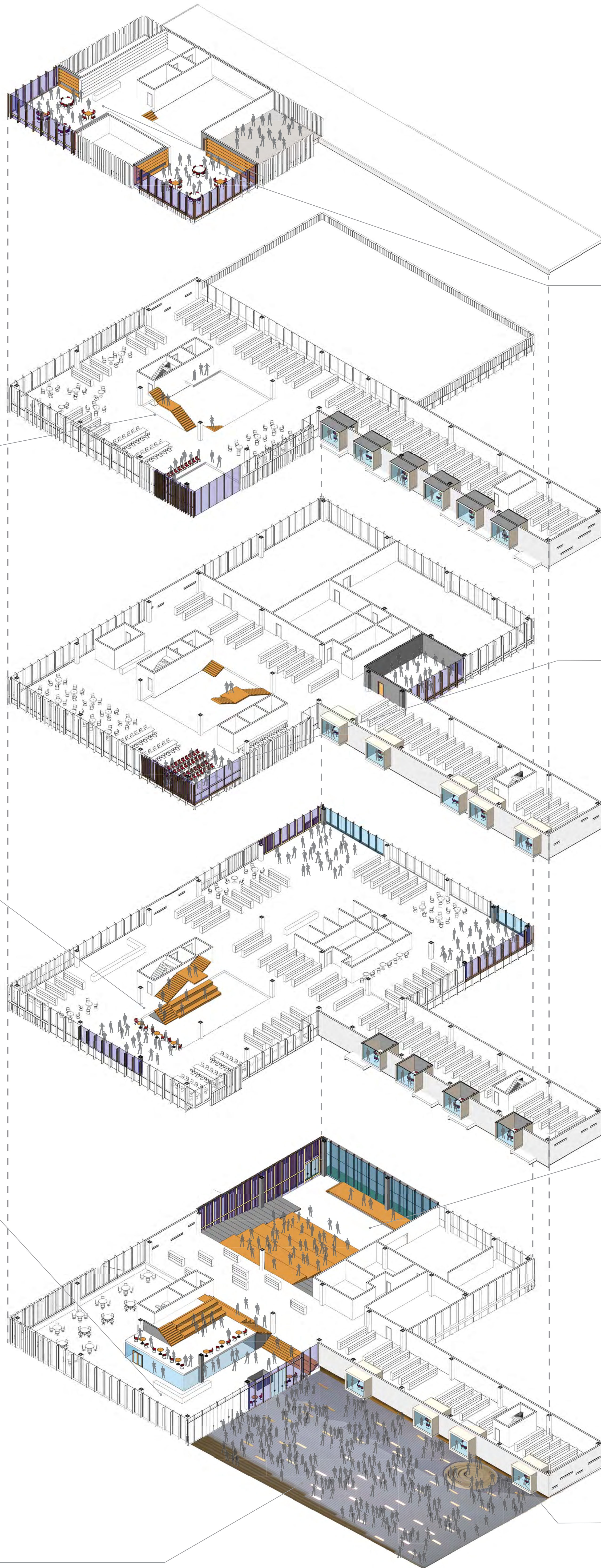


Summer



Fall

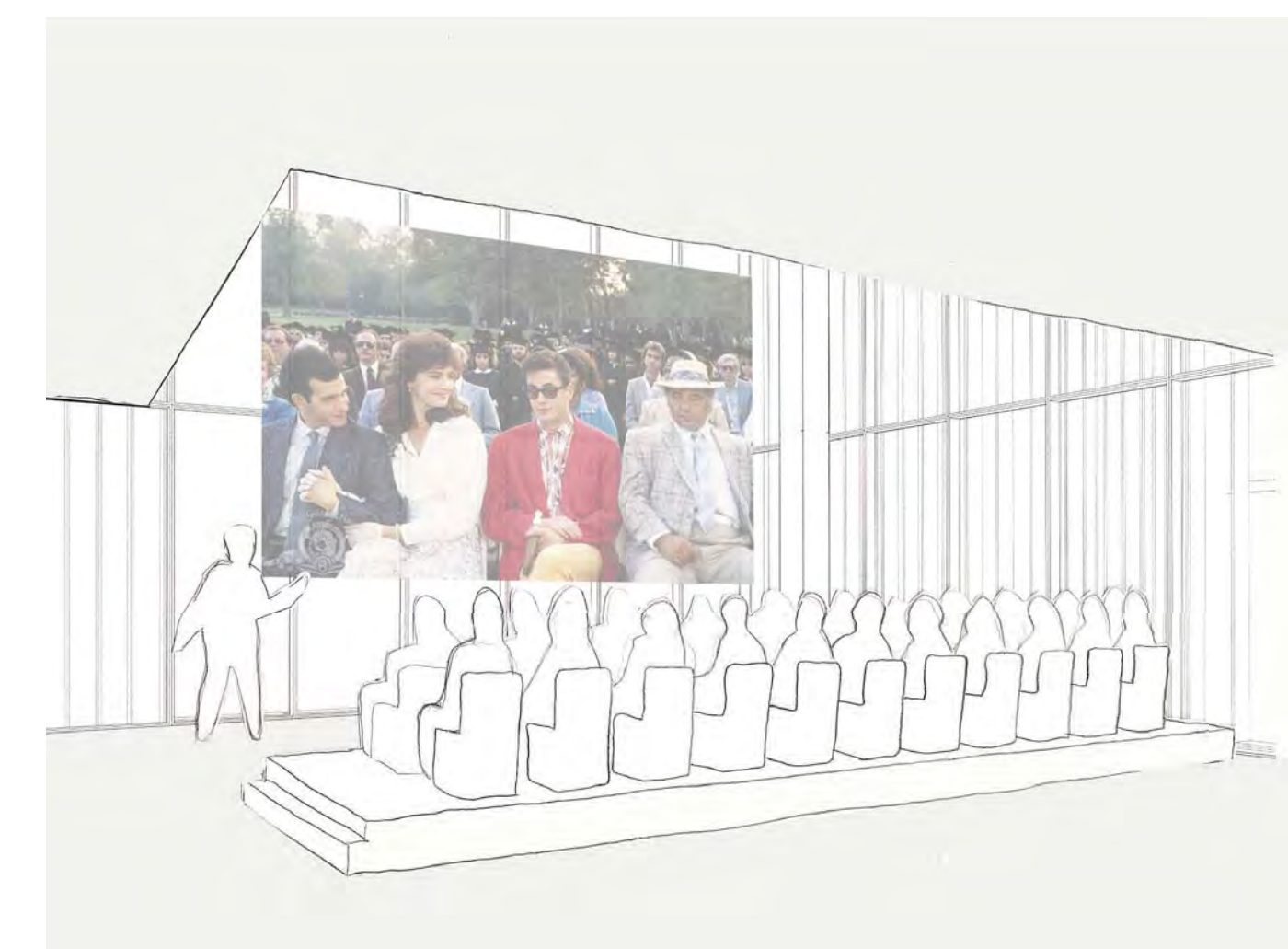
View out to Plaza



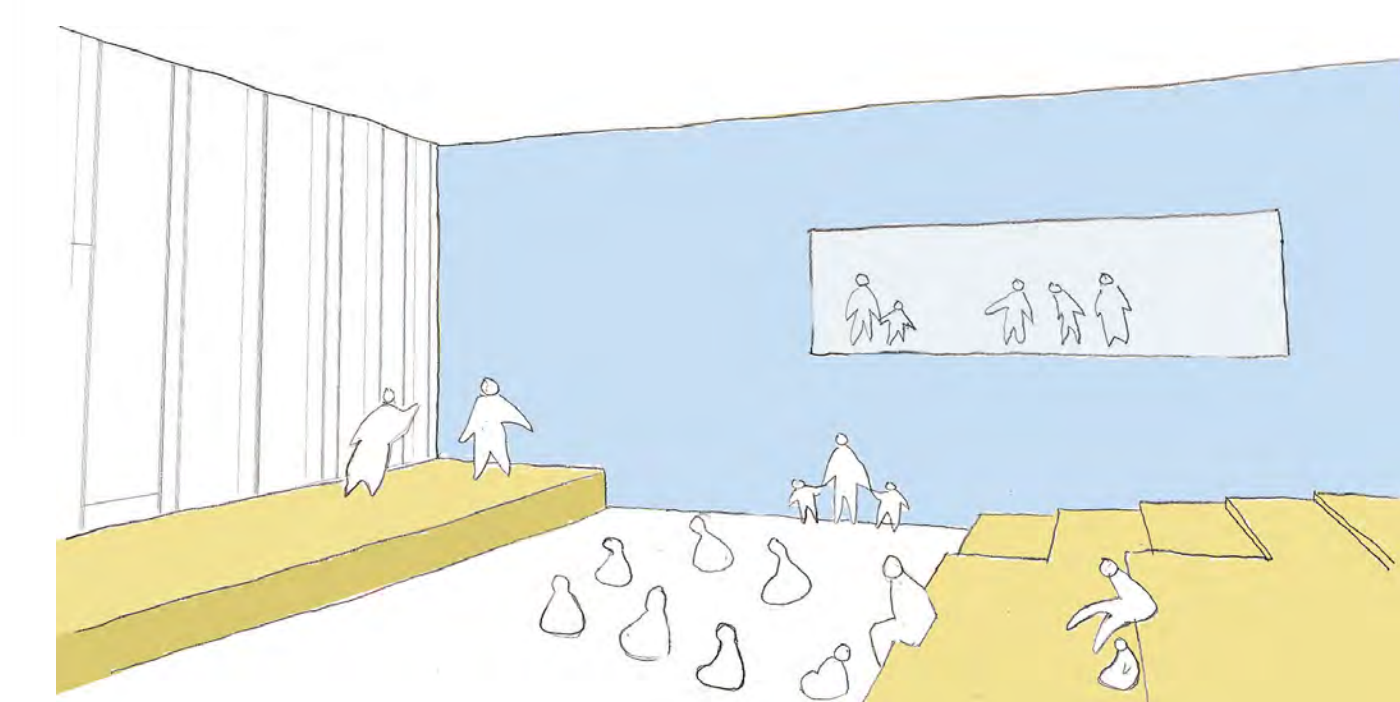
View out of University

Madison Room

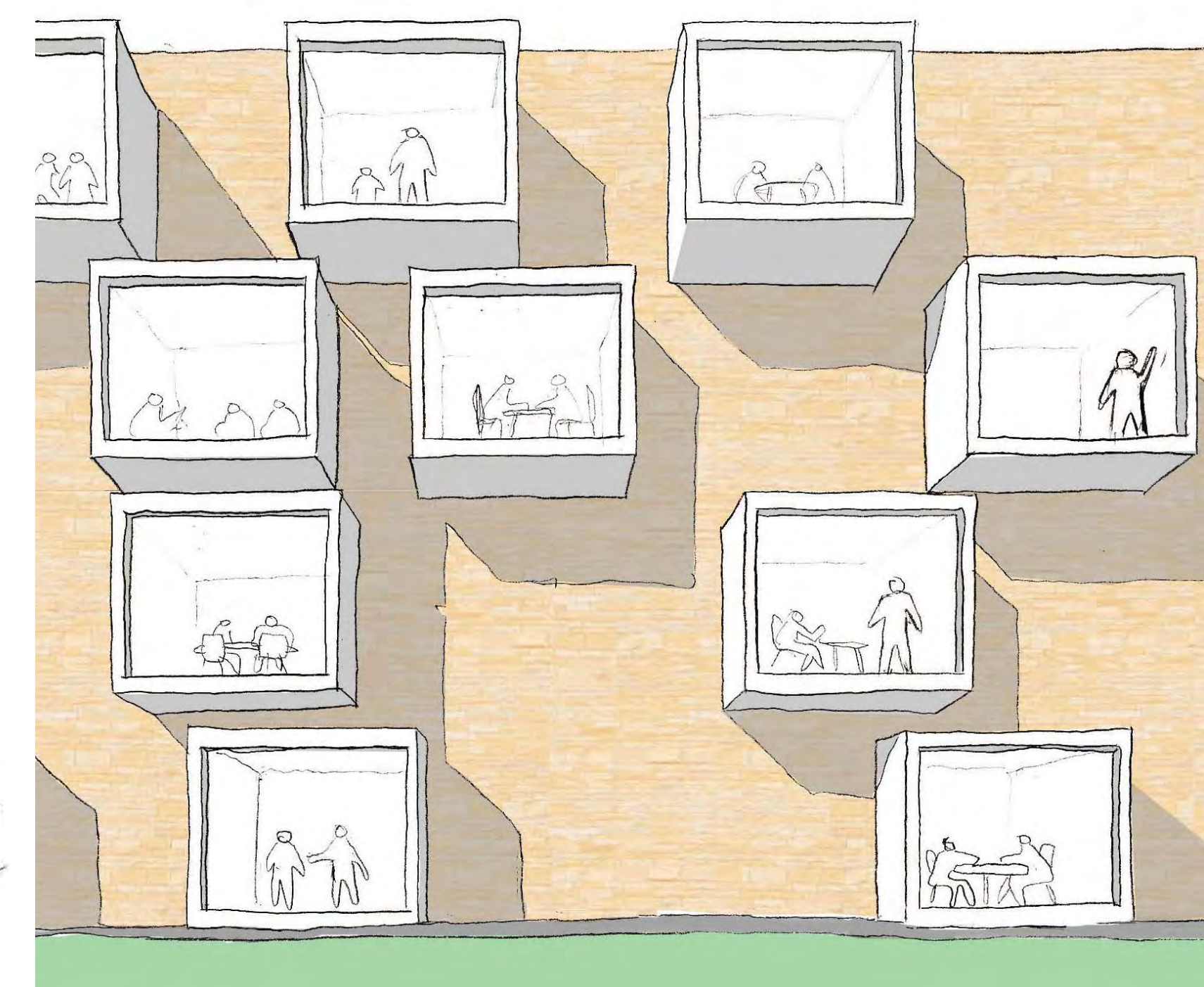
View out of State Capital



Presentation Area



Auditorium



View of Small Group Study Rooms