

IPRO340

Design of a Green Community Health Center of the Future

Final Presentation Fall 2008

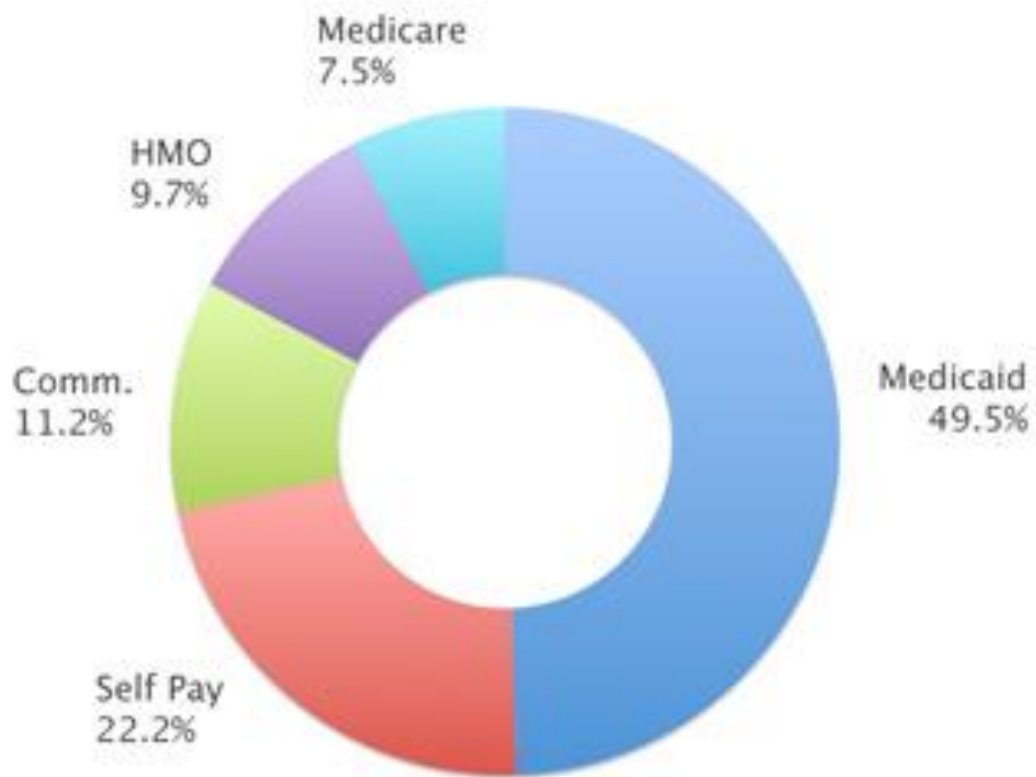
Introduction

- *“Providing affordable, quality health care among Chicagoland’s medically underserved.”*¹
- Access Community Health Network provides medical services for Chicago’s uninsured and underinsured population
- Over 50 ACCESS facilities constitute the nation’s largest health network



¹Source: ACCESS Mission Statement

Introduction



Service Population by Payer Source



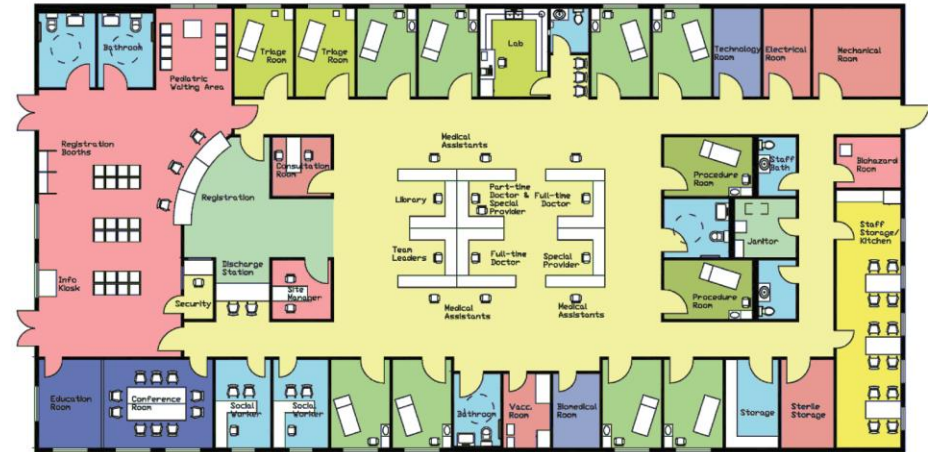
Design Principles

- Implementation of Technology
- Sustainability
- Healing Environment
- LEAN Principles
- Open Communication

Design Principles

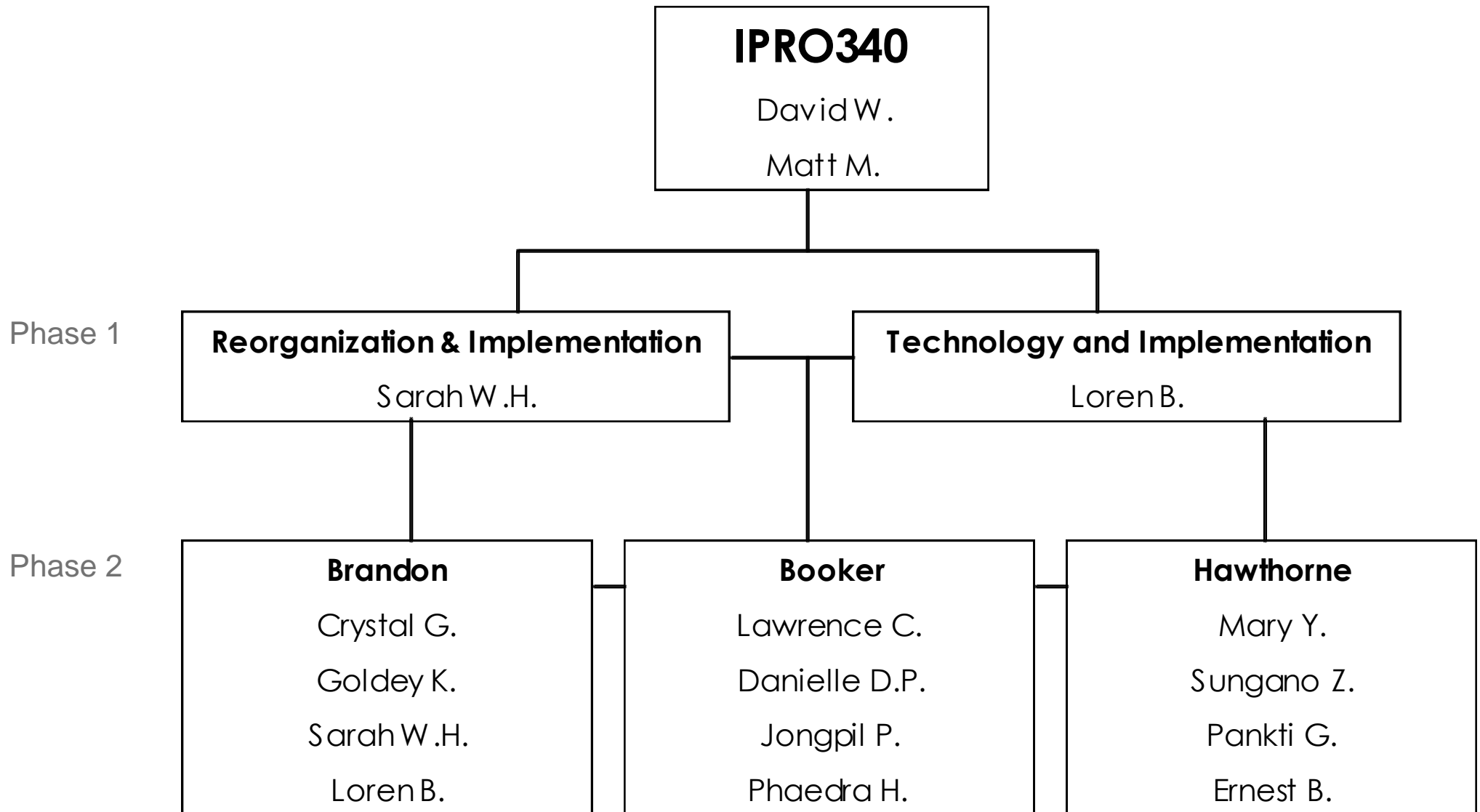


Hamburger



Hotdog

Team Breakdown



Design Principles

- Implementation of Technology
- Sustainability
- Healing Environment
- LEAN Principles
- Open Communication

Technology

- HEMOCUE B-Hemoglobin Photometer

Hemoglobin A1C test is used to diagnose patients with diabetes

The photometer produces accurate results in less than one minute

Pre-calibrated, portable analyzer that requires minimal maintenance

Price: \$300.00



Technology



- Originatic: The Universal Computer
Price: \$1,799

Design Principles

- Implementation of Technology
- **Sustainability**
 - eco-friendly materials
 - reducing energy use
- Healing Environment
- LEAN Principles
- Open Communication

Sustainability

- Tubular Skylights
Material cost: \$30-800



Sustainability

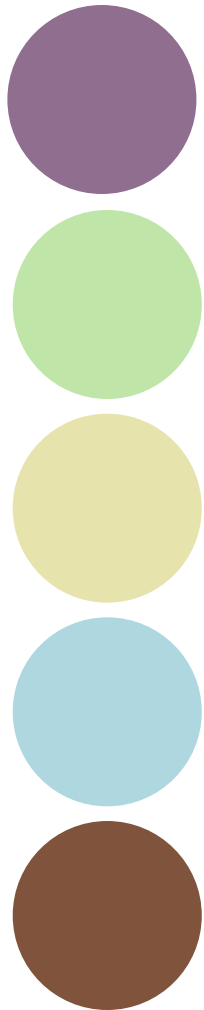
- Hyperseal roof reflectivity paint
Material cost: \$30 per gallon



Design Principles

- Implementation of Technology
- Sustainability
- **Healing Environment**
 - aesthetics
 - atmosphere
- LEAN Principles
- Open Communication

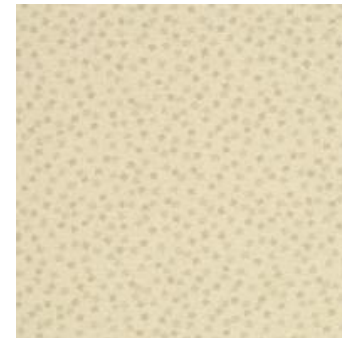
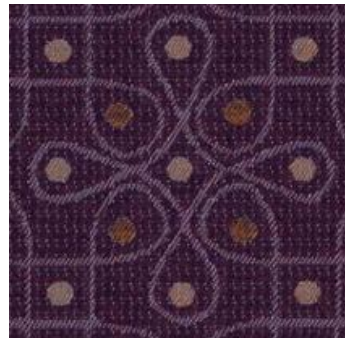
Healing Environment



- Spa Therapy Atmosphere¹
- Sherwin Williams Harmony Paint
 - Contains no Volatile Organic Compounds
 - Low Fumes
 - Addresses Sustainability
 - \$24.95/gallon

Healing Environment

- Anti-microbial seating fabric
- PVC-free
- Made from recycled fiber
- Pricing based on project size



Healing Environment

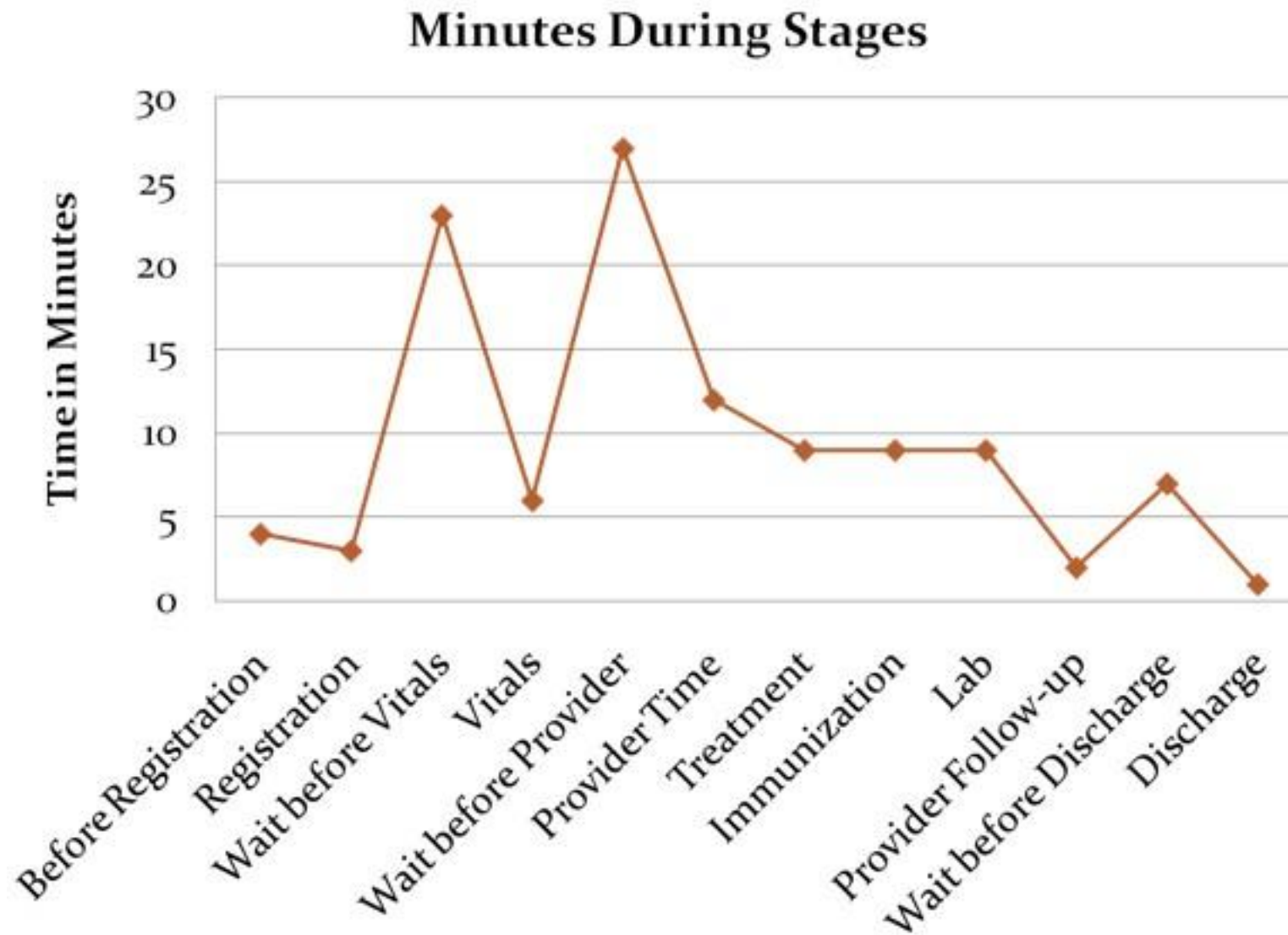
- Nora rubber flooring
 - Recyclable and renewable
 - Durable
 - Hygienic
 - Aesthetically pleasing
- Price: \$2.82 per sq ft.



Design Principles

- Implementation of Technology
- Sustainability
- Healing Environment
- **LEAN Principles**
 - Identification and steady elimination of waste
 - Improvement of quality
 - Improvement of production time
 - Cost reduction
- Open Communication

LEAN Principles



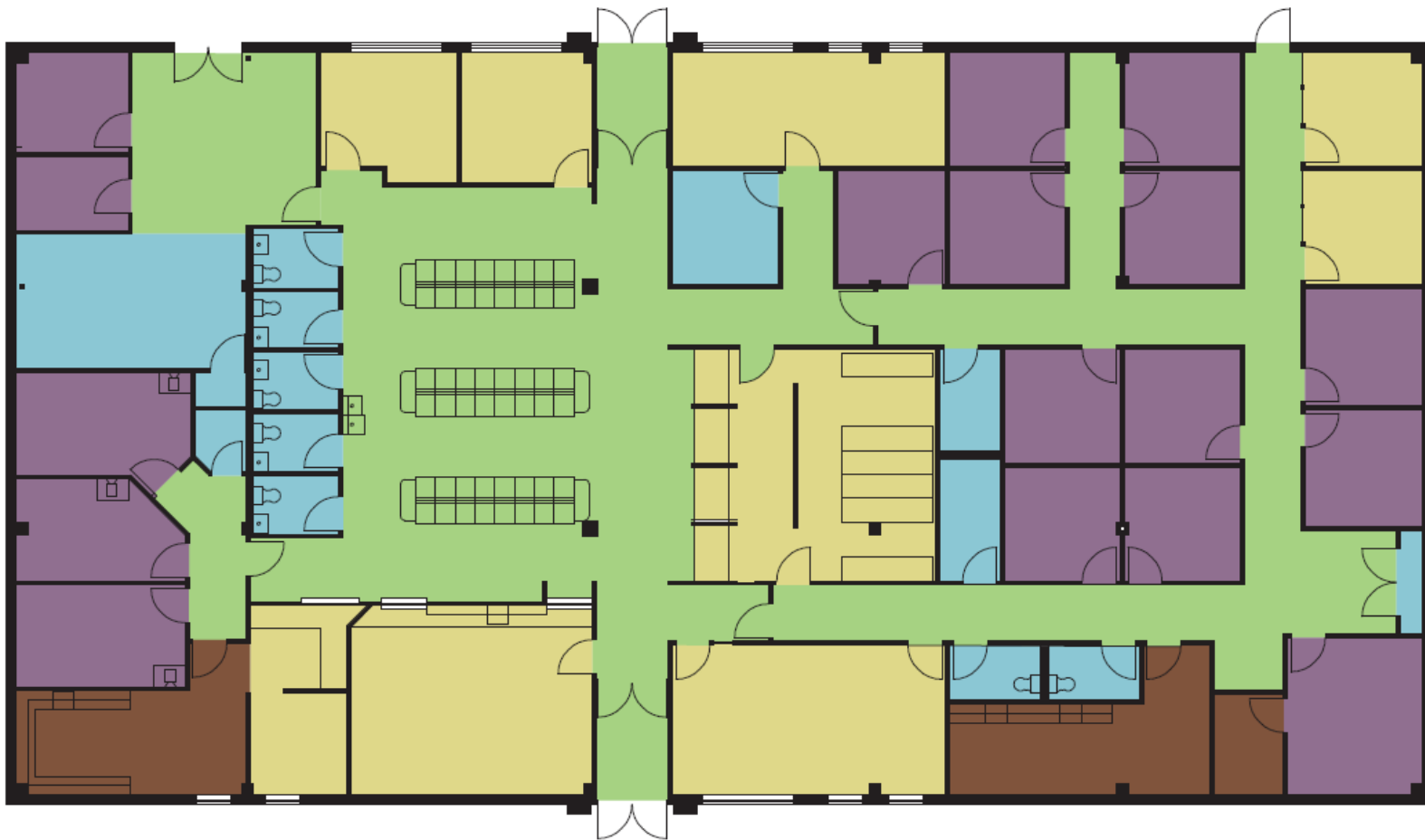
Design Principles

- Implementation of Technology
- Sustainability
- Healing Environment
- LEAN Principles
- Open Communication

Healing Environment

Current Floor Plan

B
O
O
K
E
R

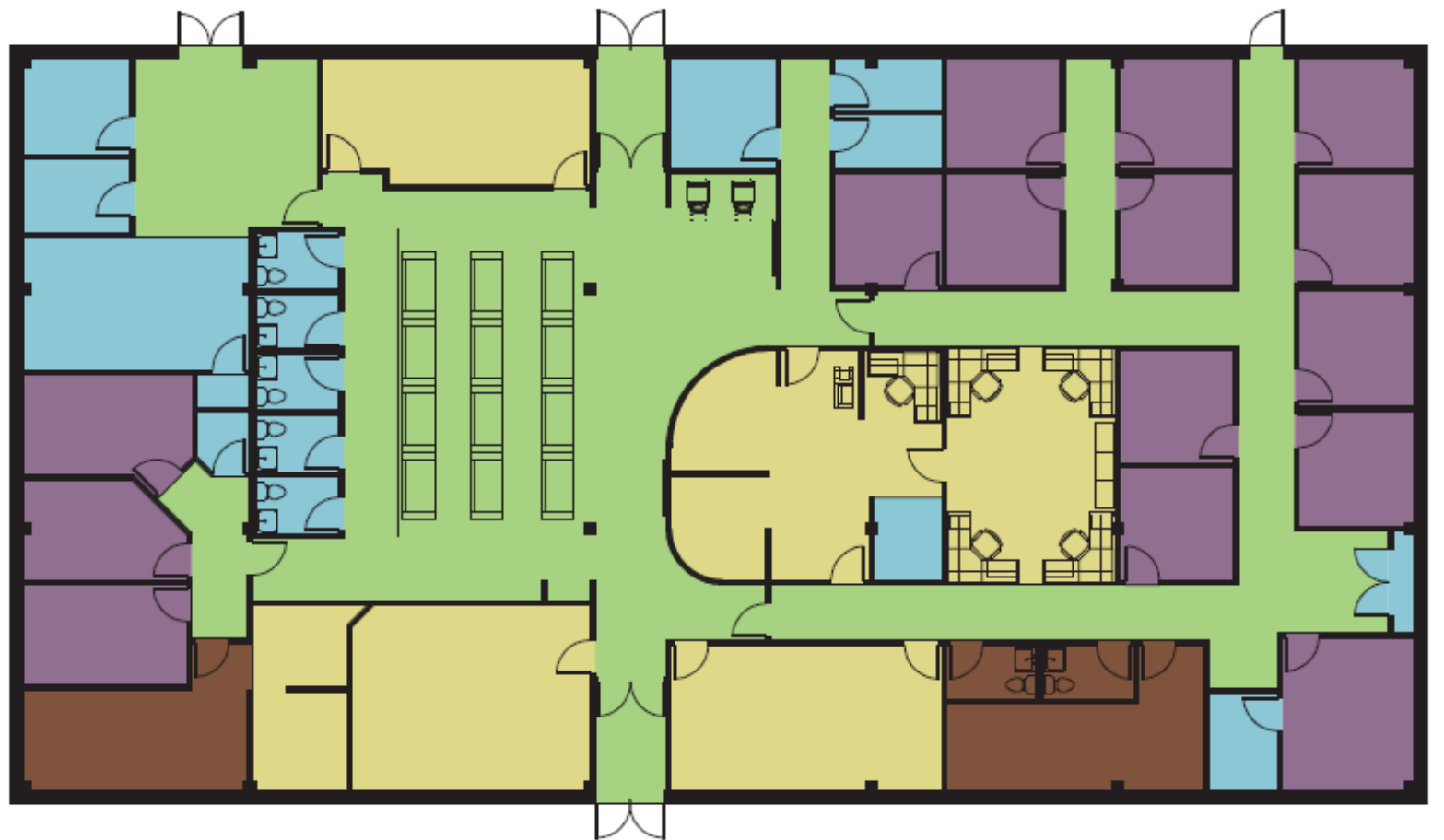


■ Exam Rooms ■ Public ■ Staff ■ Prep & Diagnostic ■ Support

Healing Environment

Revised Floor Plan

B
O
O
K
E
R



Healing Environment

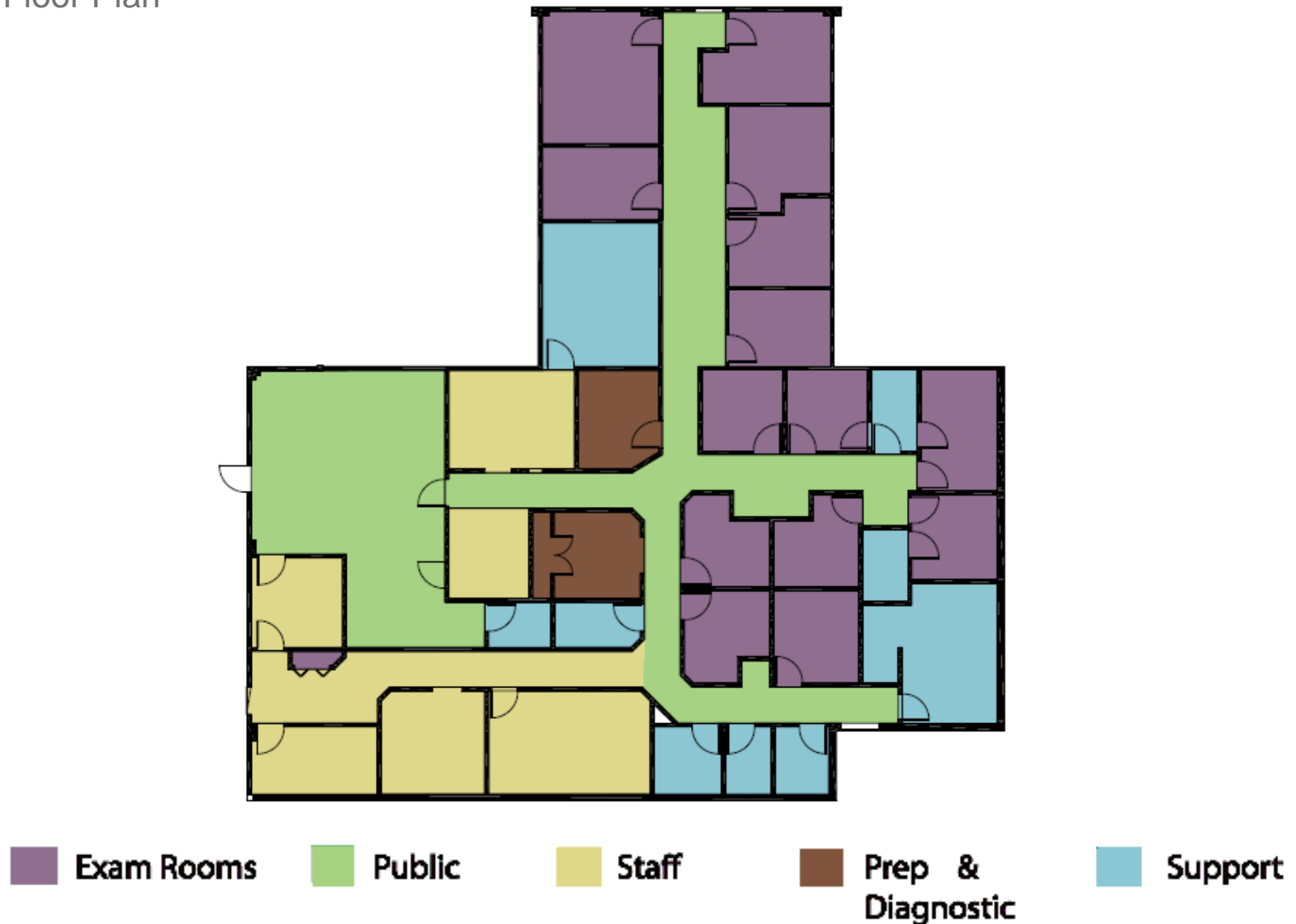
B
O
O
K
E
R



LEAN Principles

Current Floor Plan

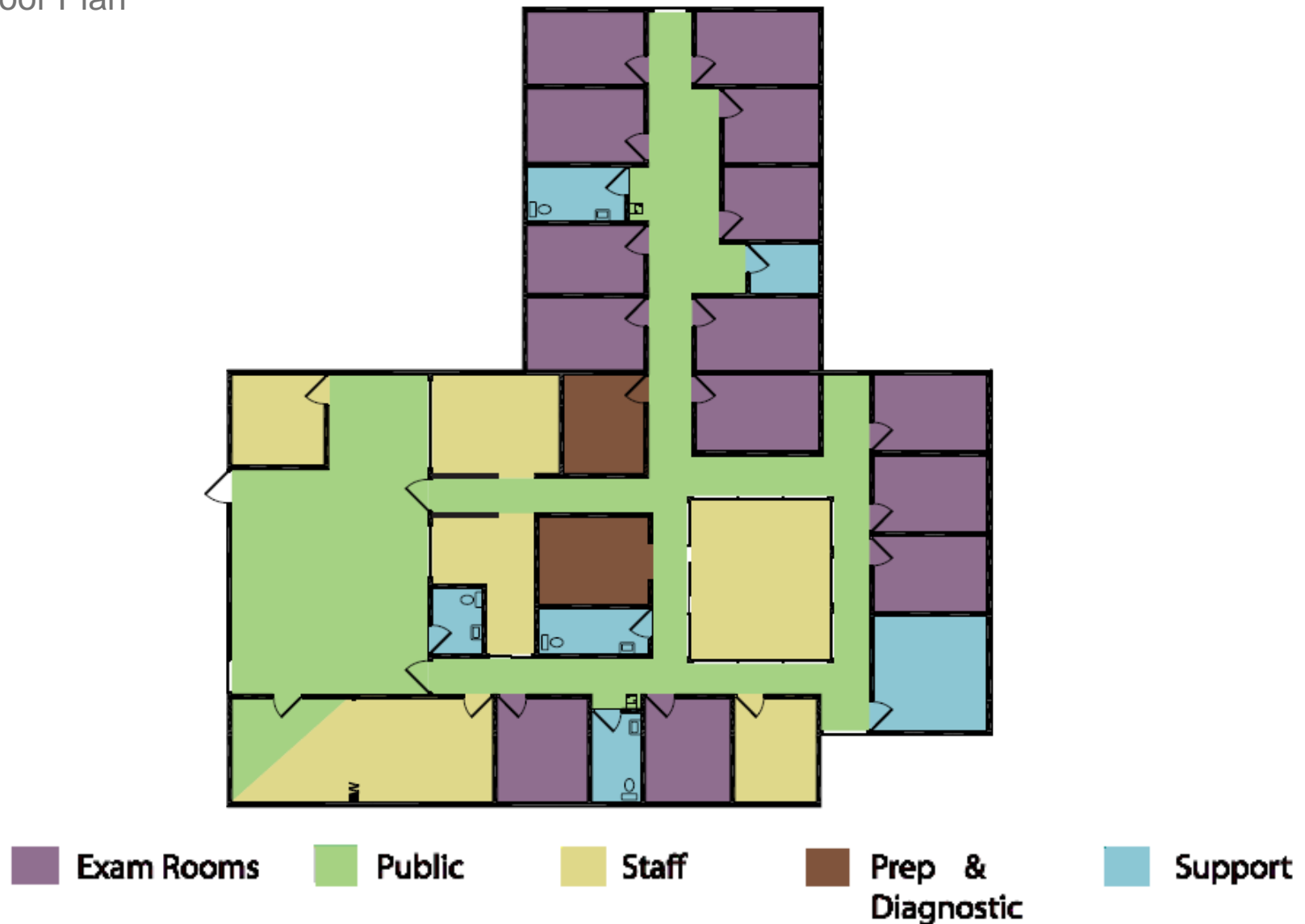
H
A
W
T
H
O
R
N
E



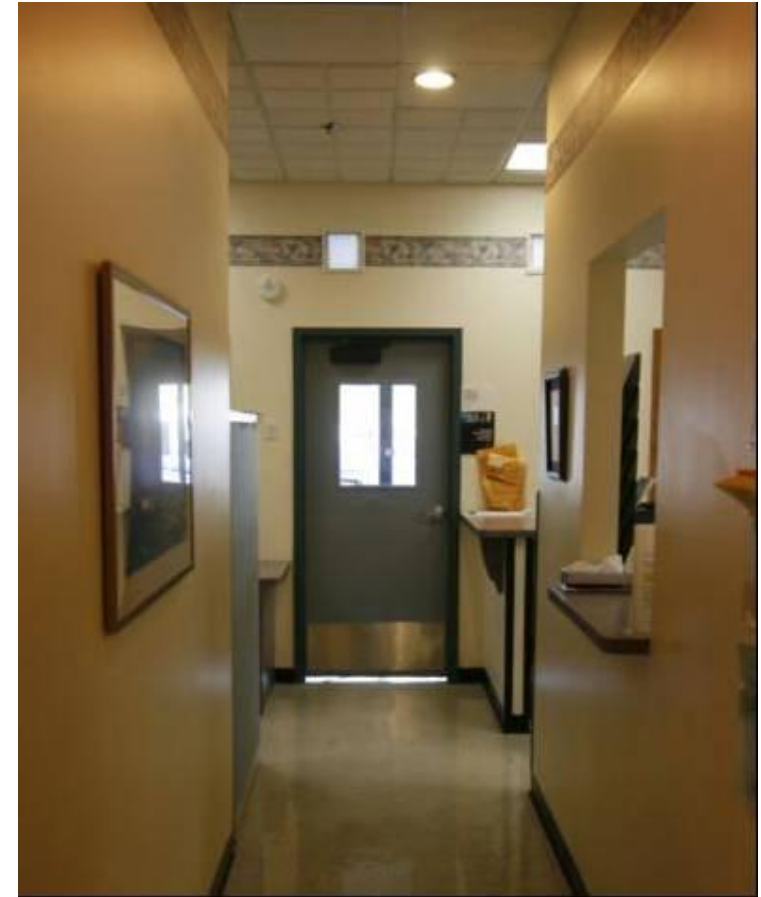
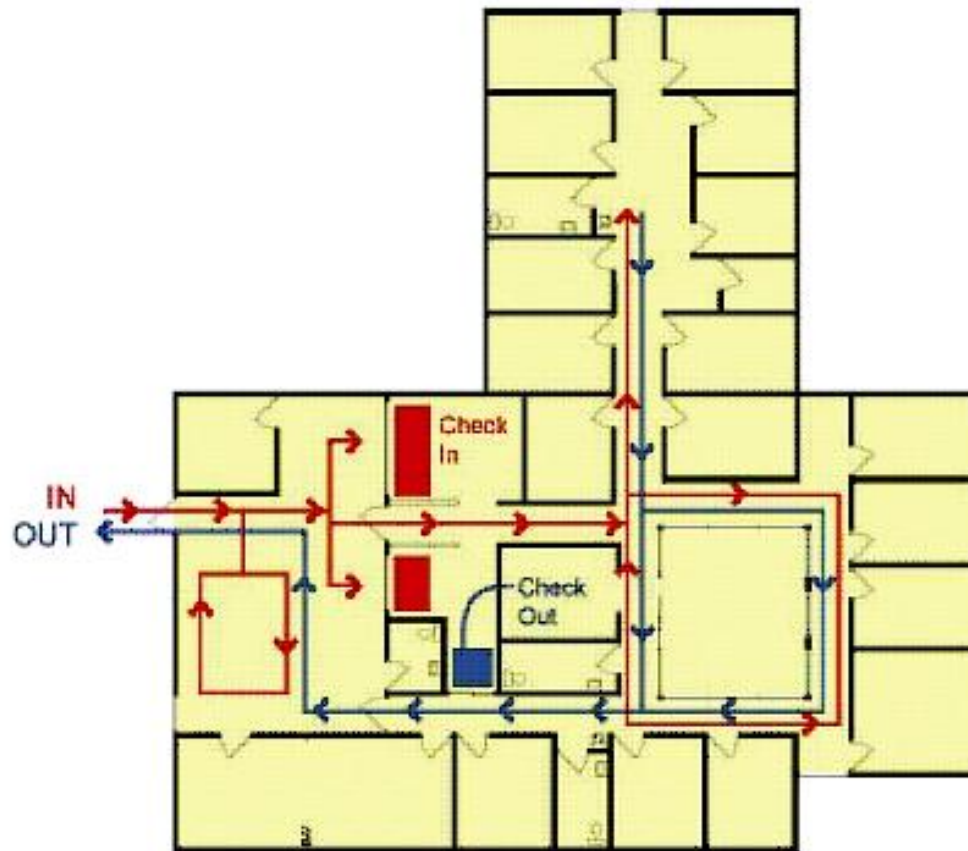
LEAN Principles

Revised Floor Plan

H
A
W
T
H
O
R
N
E



LEAN Principles



H
A
W
T
H
O
R
N
E

Open Communication

Current Floor Plan

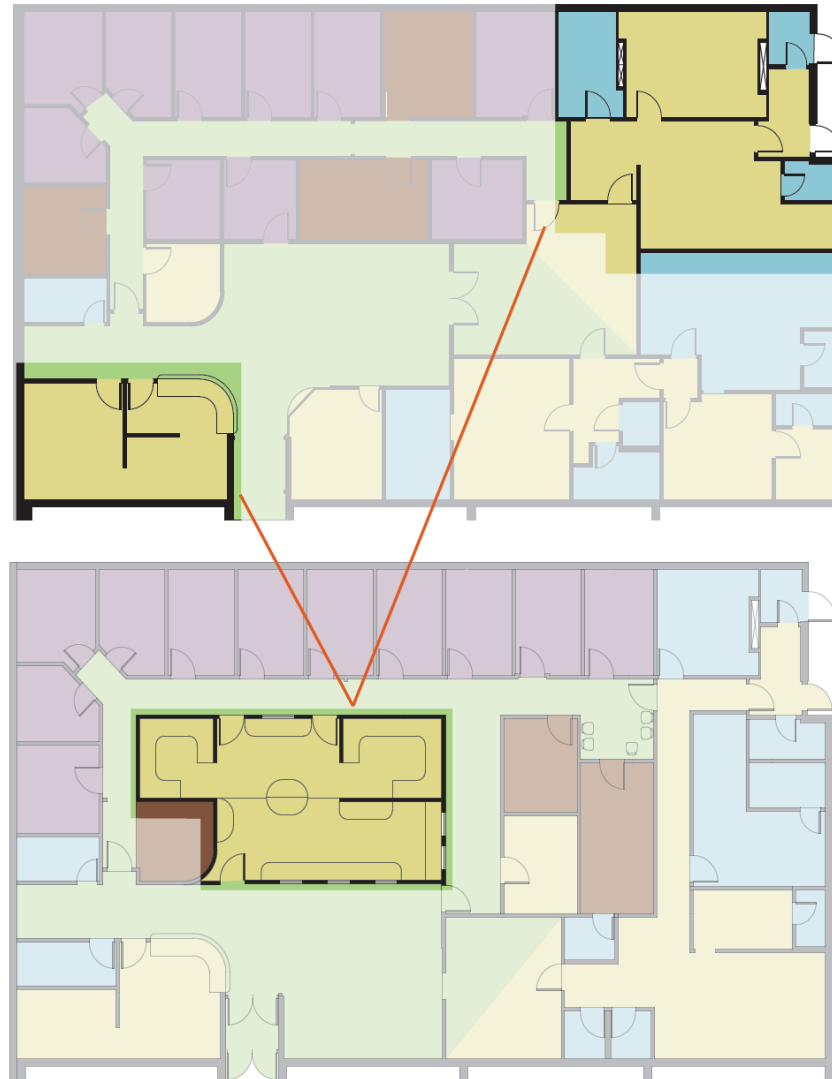
B
R
A
N
D
O
N



 Exam Rooms	 Public	 Staff	 Prep & Diagnostic	 Support
--	--	--	---	---

Open Communication

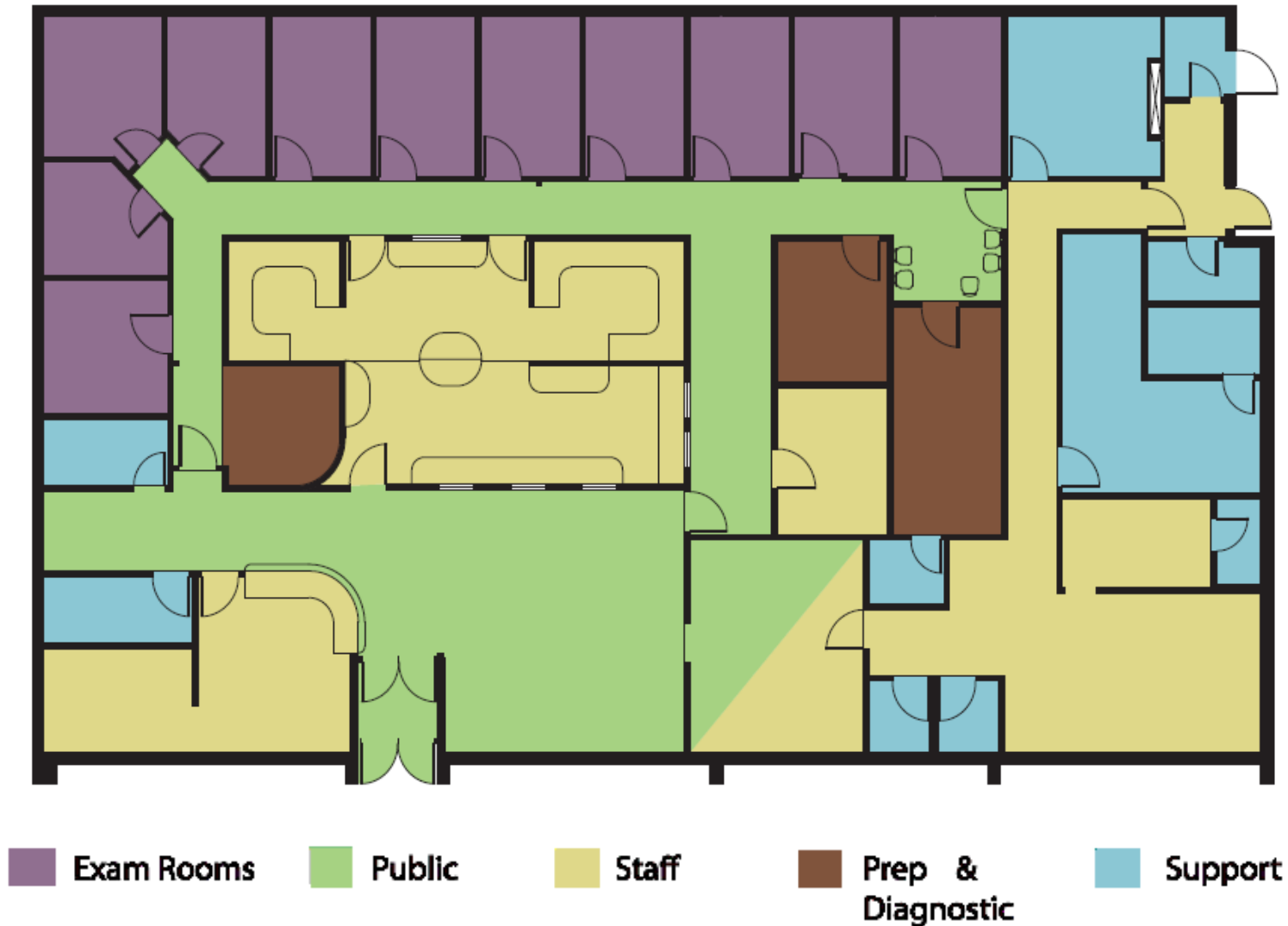
B
R
A
N
D
O
N



Open Communication

Revised Floor Plan

B
R
A
N
D
O
N



Finance

	Brandon	Booker	Hawthorne
Demolition	\$8,679	\$3,270	\$7,460
Construction	\$121,691	\$102,050	\$148,060
Misc	\$76,136	\$83,690	\$90,620
Furniture	\$15,657	--	\$13,860
Total	\$222,163	\$189,010	\$260,200

Challenges Encountered

- Understanding and defining the problem
- Tardiness amongst group members
- Difficulties scheduling site visits
- Lack of transportation available
- Coordinating formats used

Team Members

- Ernest Bellamy
5th Year Arch.
- Loren Bo
5th Year Arch.
- Lawrence Chung
3rd Year BME.
- Danielle Di Pego
5th year Arch.
- Pankti Gala
3rd Year BME.
- Crystal Glover
4th Year Arch.
- Jongpil Park
4th Year Arch.
- Phaedra Howe
3rd Year BME.
- Goldey Khanna
2nd Year ChemE.
- Sarah Wahlstrom Helgren
4th Year BME.
- Mary Yu
3rd Year BME.
- Sungano Ziswa
5th Year Arch.
- Matt Miller
Advisor
- David Winkin
Advisor