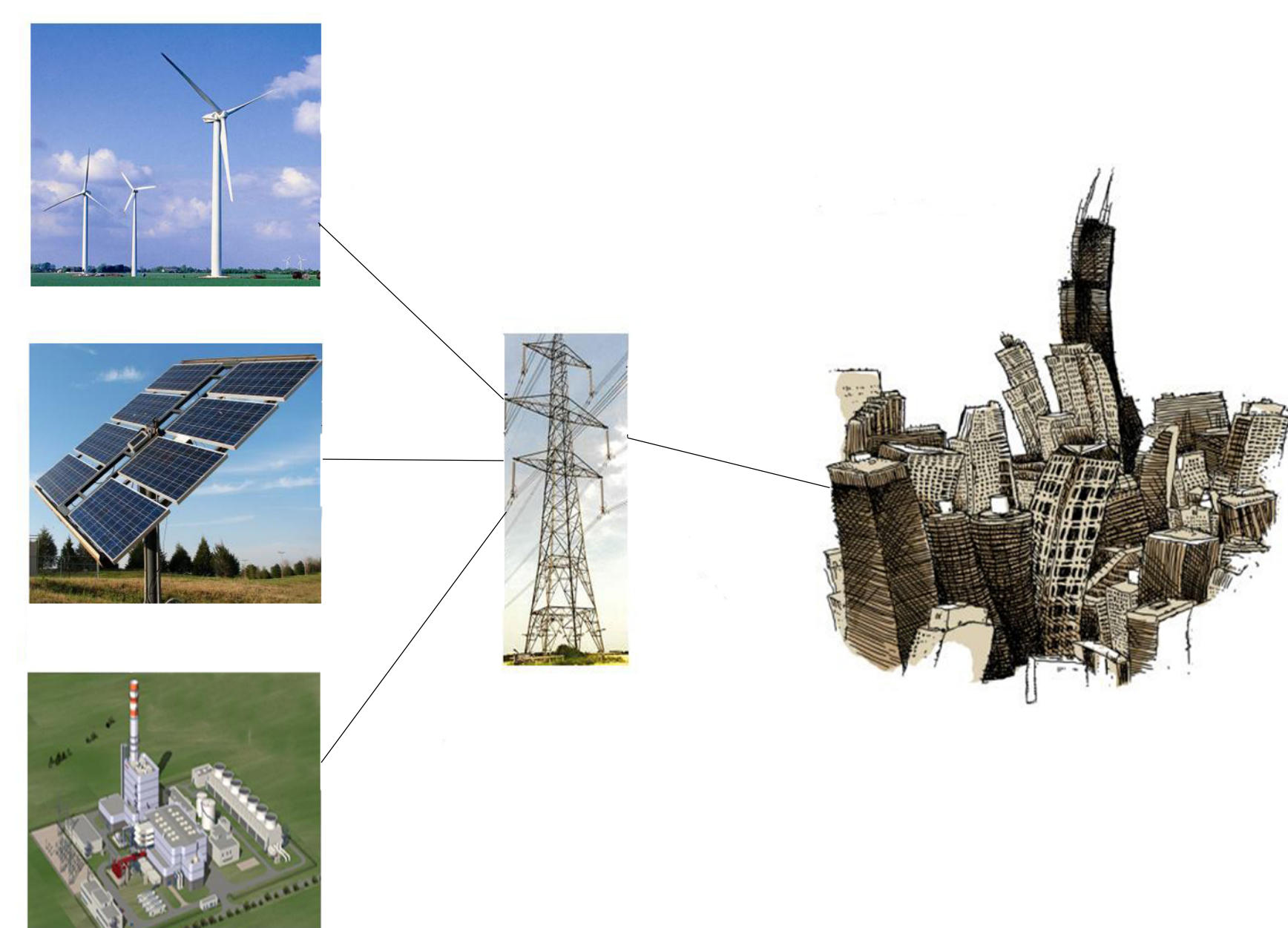




AMPS - Alternative Metropolitan Power Strategy

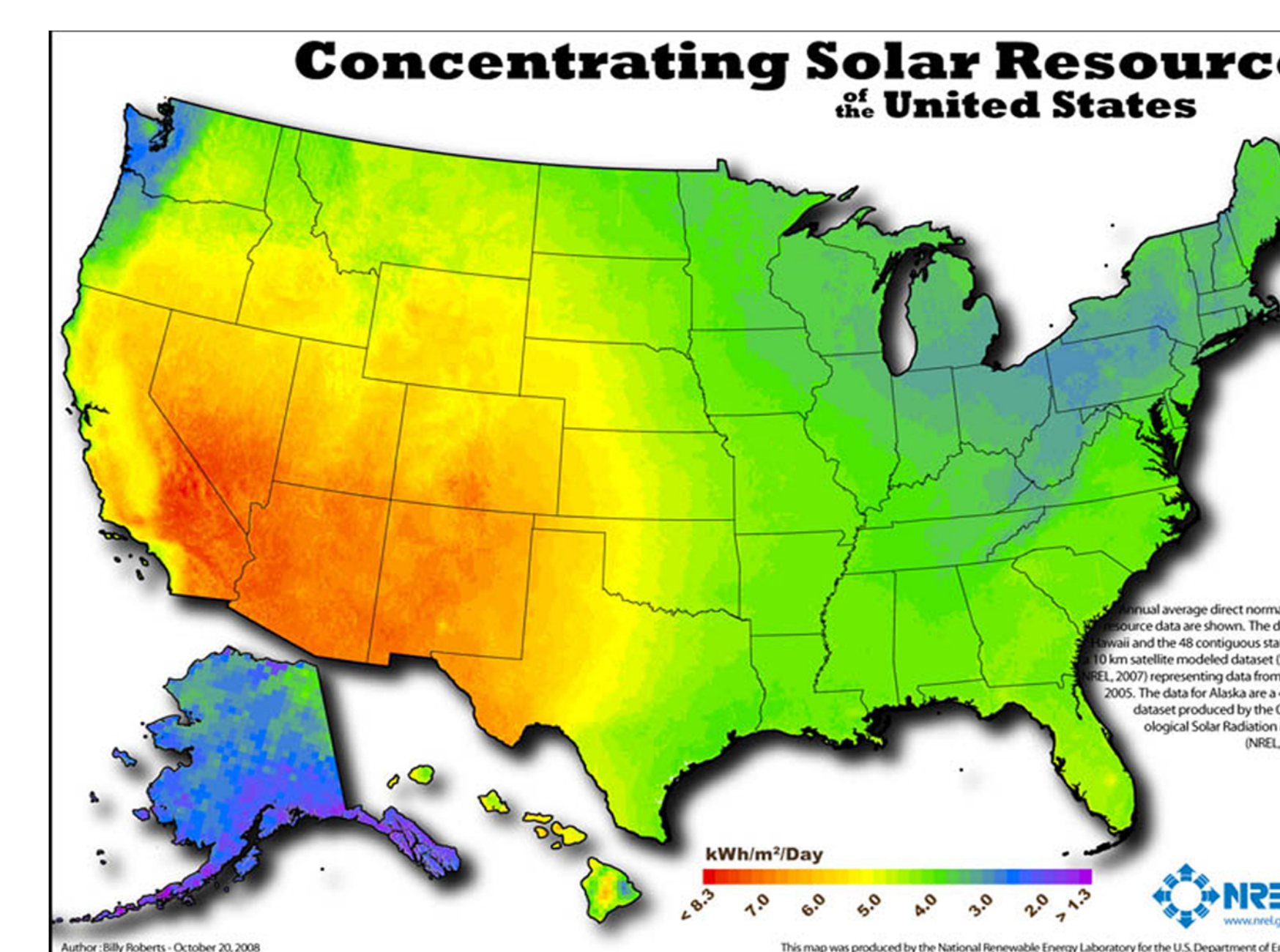
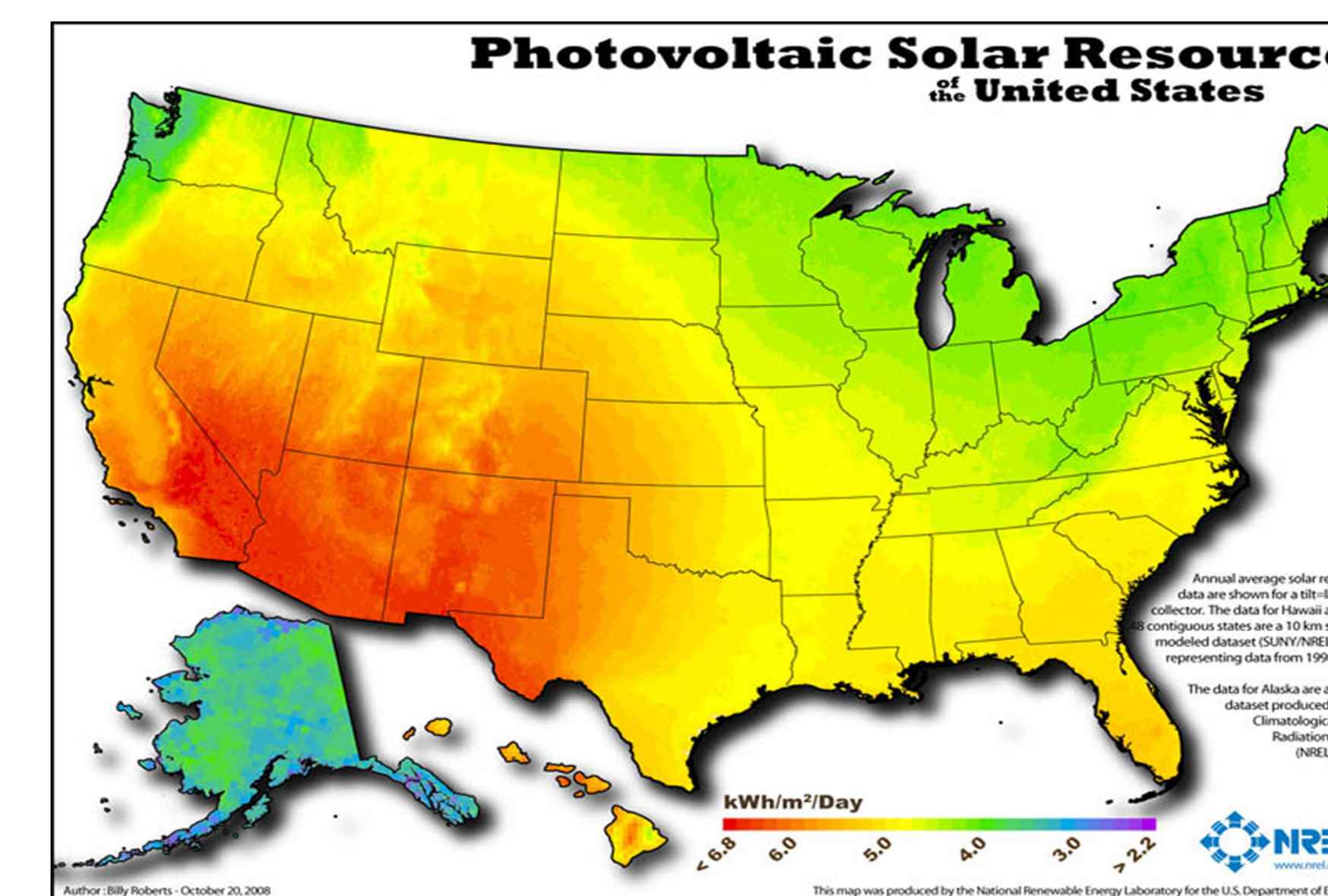
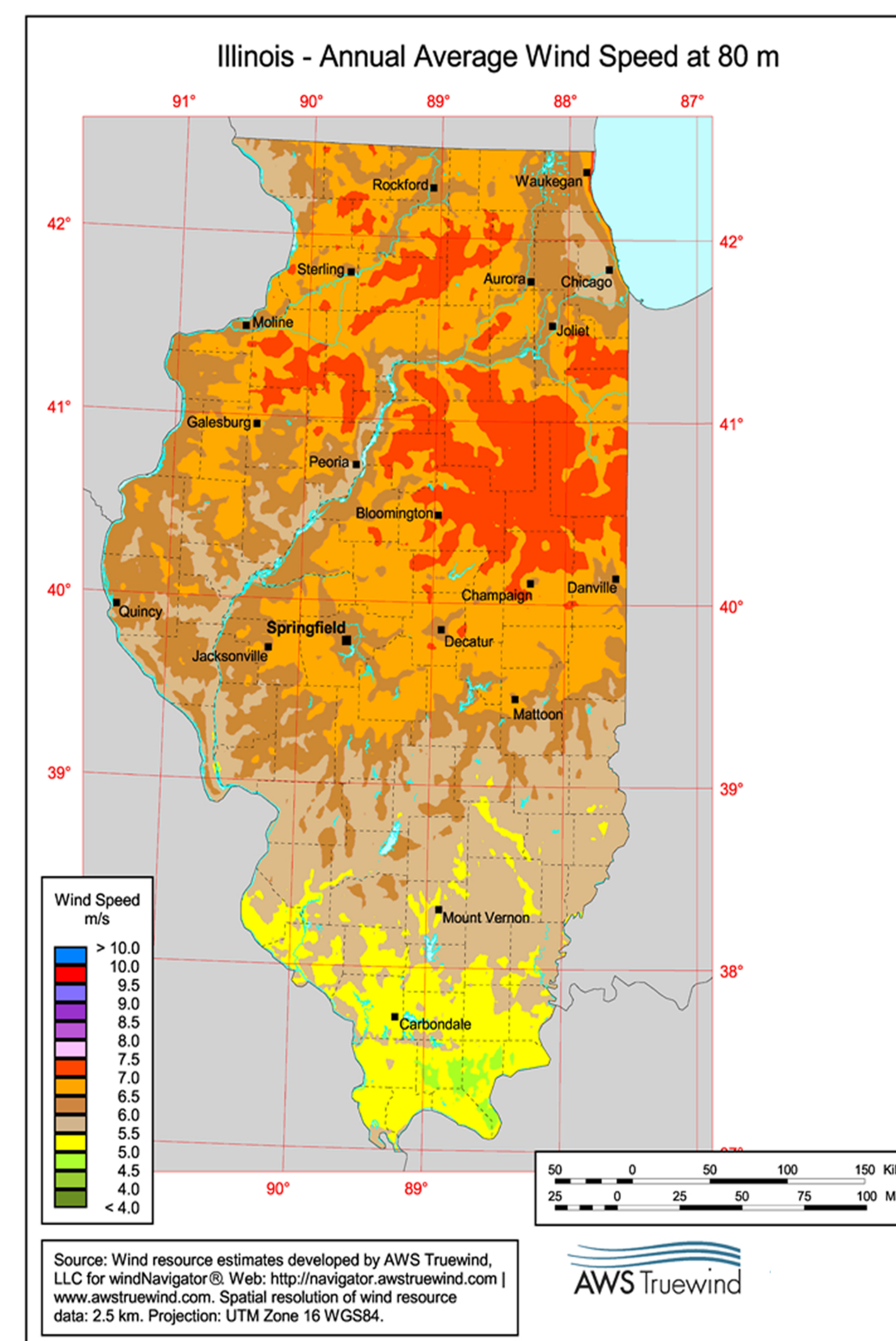
Problem

- The federal government is considering mandating a 20% Renewable Portfolio Standard (RPS) nationwide.
- We want to identify how Chicago could meet the 20% by
 - Identifying Chicago's energy demand
 - Investigate renewable energy technologies
 - Wind
 - Solar (Photovoltaic & Thermal)
 - Combustion turbines for backup
- Perform Cost-Benefit Analysis

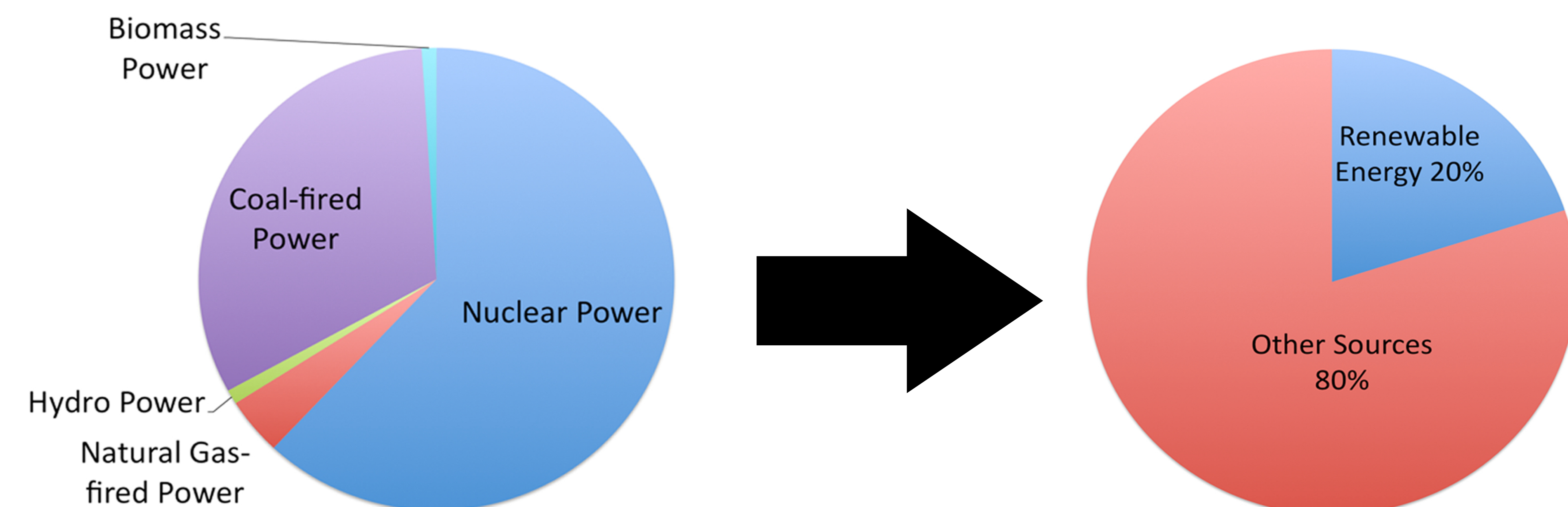


Research

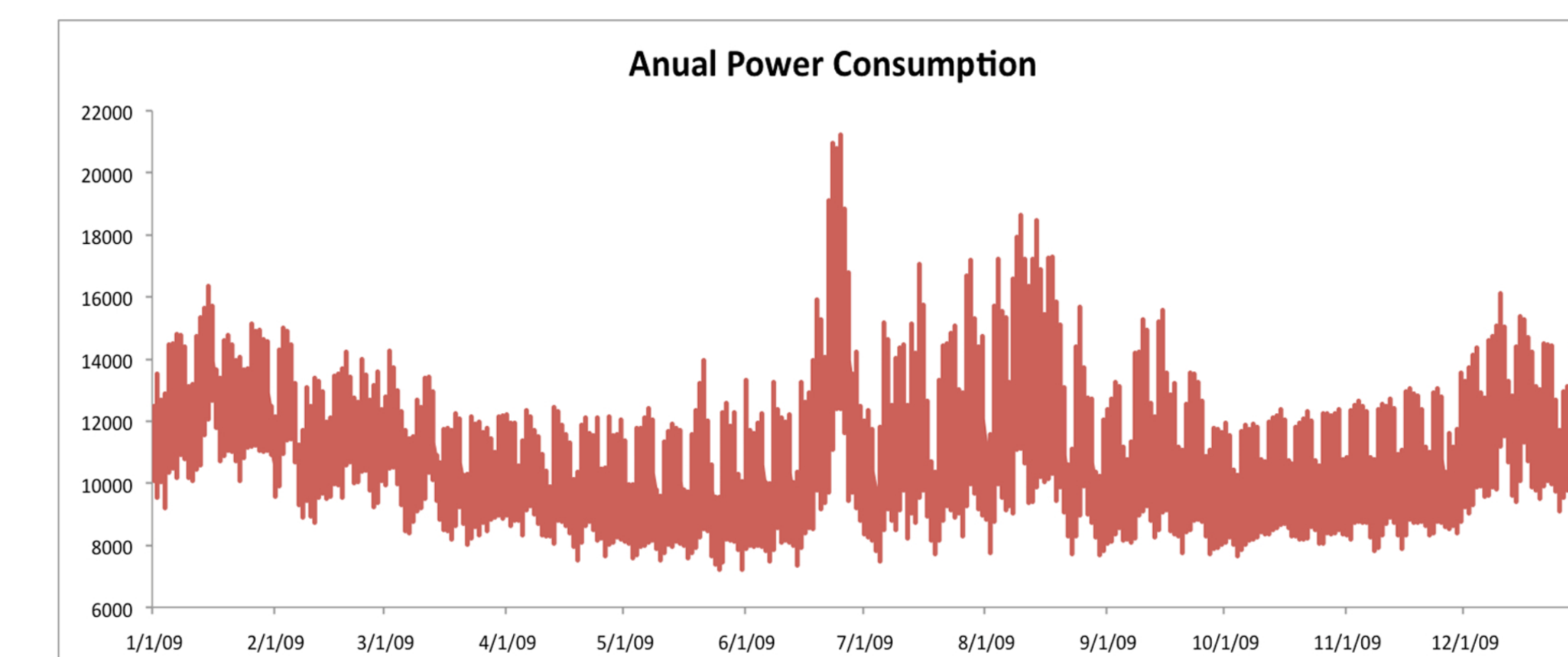
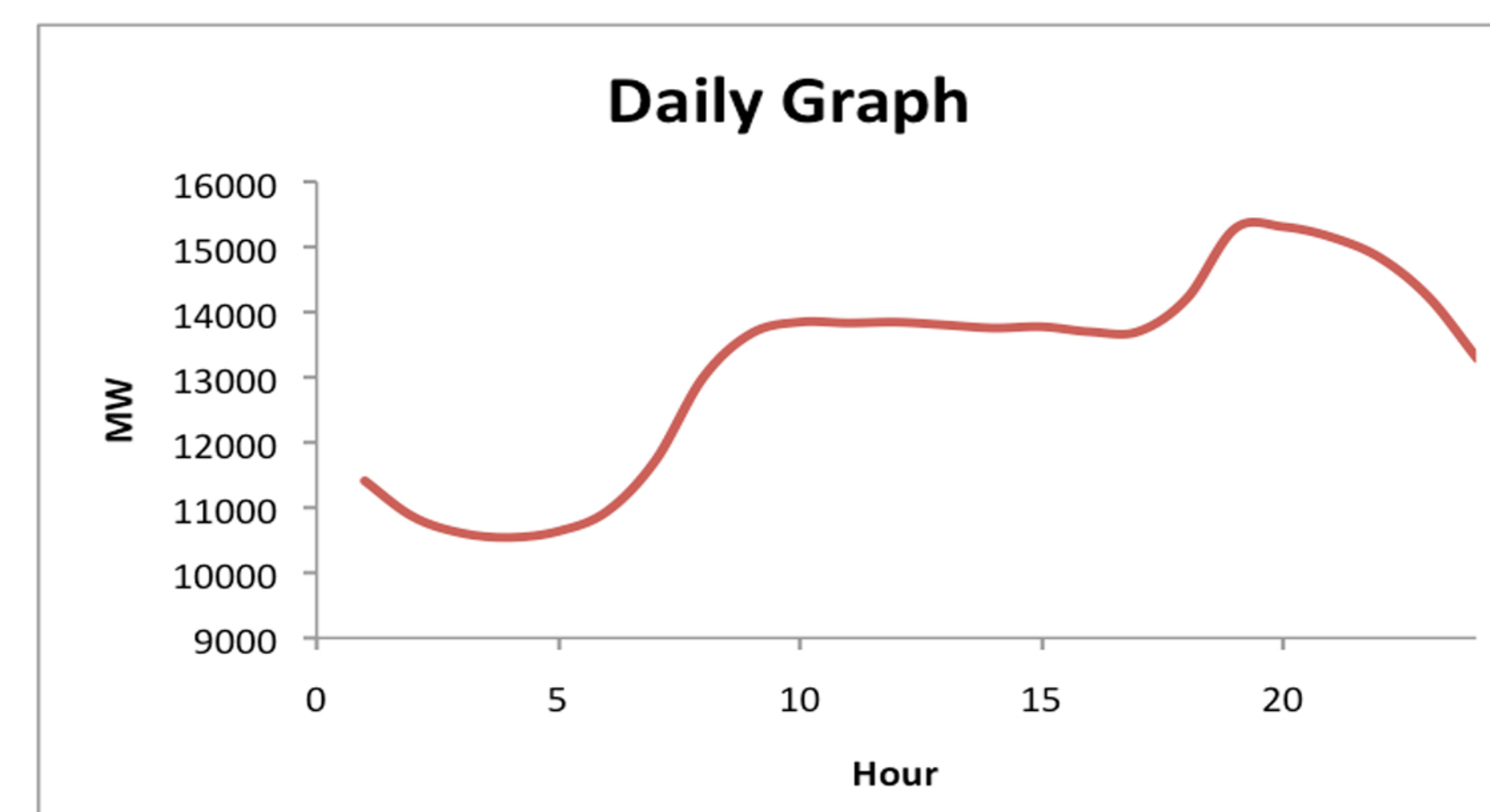
Environmental Data



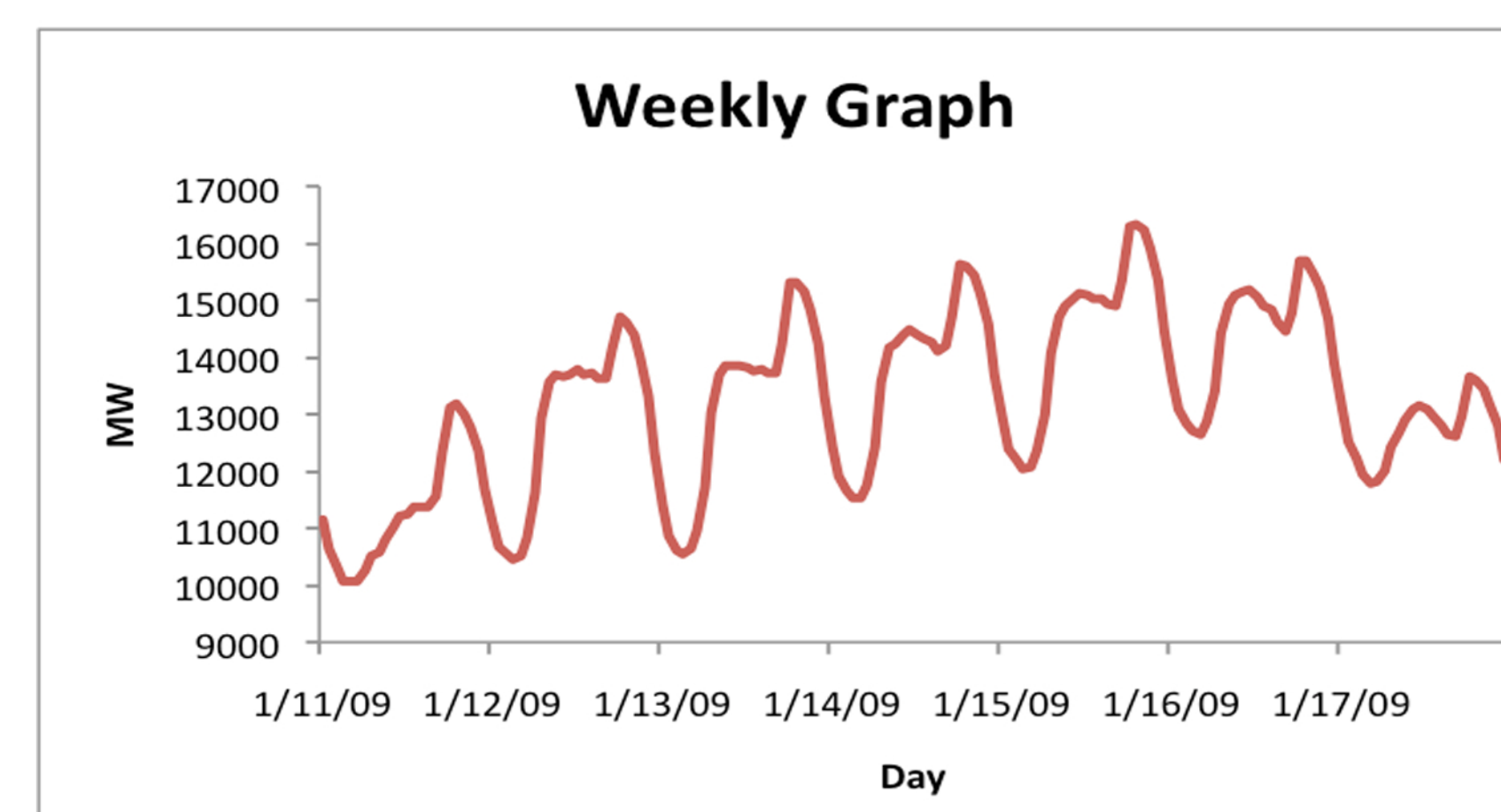
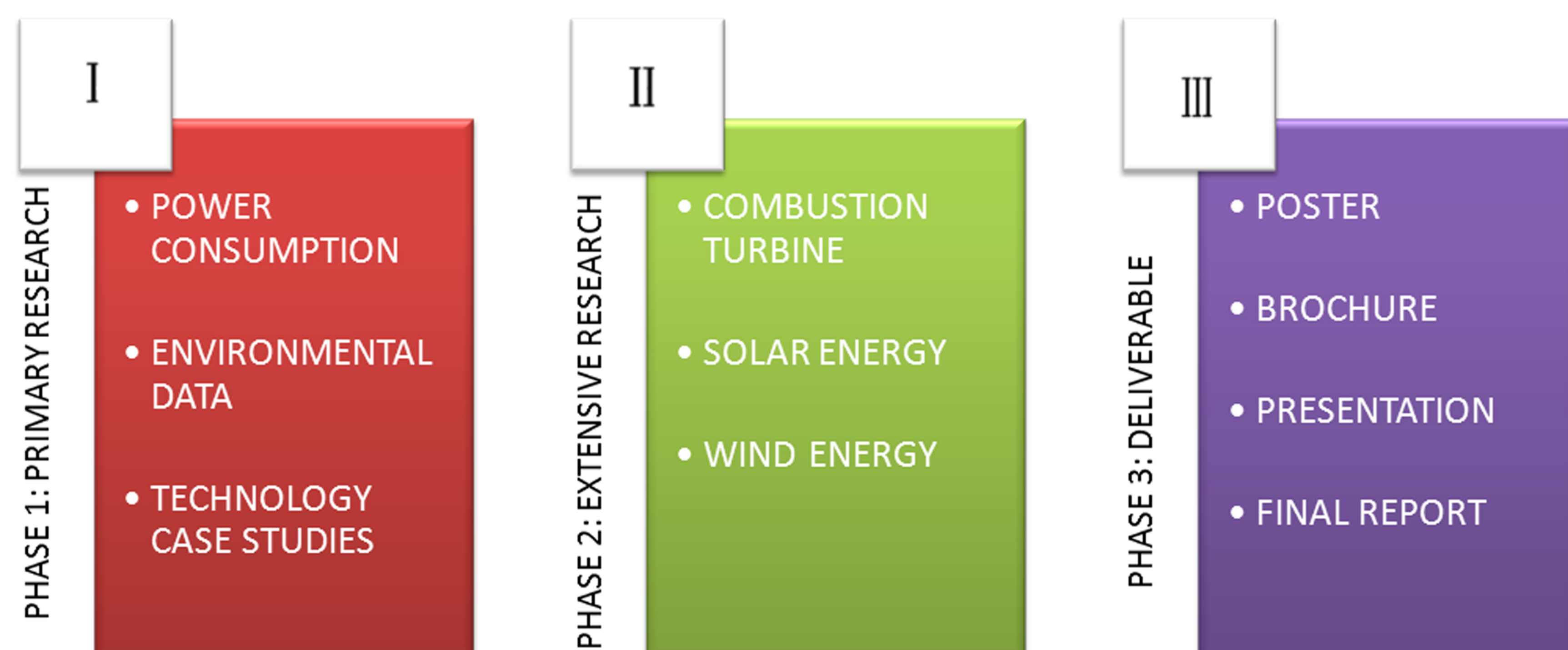
Objective



Energy Consumption Data



Approach



Renewable Energy 20% = 3,140 GWhr/Year