

# I PRO 307 Intermodal Container Transport Solutions



**MI-JACK**  
PRODUCTS

# I PRO 307

- Streamlining Intermodal freight yards
- Understanding how a freight city functions
- Making the transportation of people and goods more efficient and sustainable

# Team Objectives

- **MiJack- Pathfinder technology simulation**
  - (Ryan Beau-Luby, Joel Zook, Matt Wiese)
- **Define current techniques for intermodal facilities and transportation logistics at Joliet.**
  - (Bryan Slonski, Konstantin Balakirev, David Dziuba, John Bouikidis)
    - Existing Facilities
    - Truck/Train/Barge/Pipeline
    - Intra facility transportation
    - Regulations
- **Investigate alternative fuel types and applications.**
  - (Matt Cargill, Matt Kehoe, Melat Tesfaye, Chris Wiseman)
    - Availability
    - Emissions and environmental effects
    - Efficiency comparison
    - Laws, regulations, restrictions

# Team Process

- **Monitoring progress**
  - Meeting twice a week, presenting progress each day.
- **Adapting to change**
  - The existing facility group has expanded to overlap with alternative fuels in creating an off site fueling station
- **Obstacles overcome**
  - Realization of related trends involved with urban development
    - micro -> MACRO
  - Integrating the surrounding aspects of a freight facility into a cohesive whole
  - Lack of students having experience with simulation programs
  - Obtaining data from fueling stations and freight yards



# Site

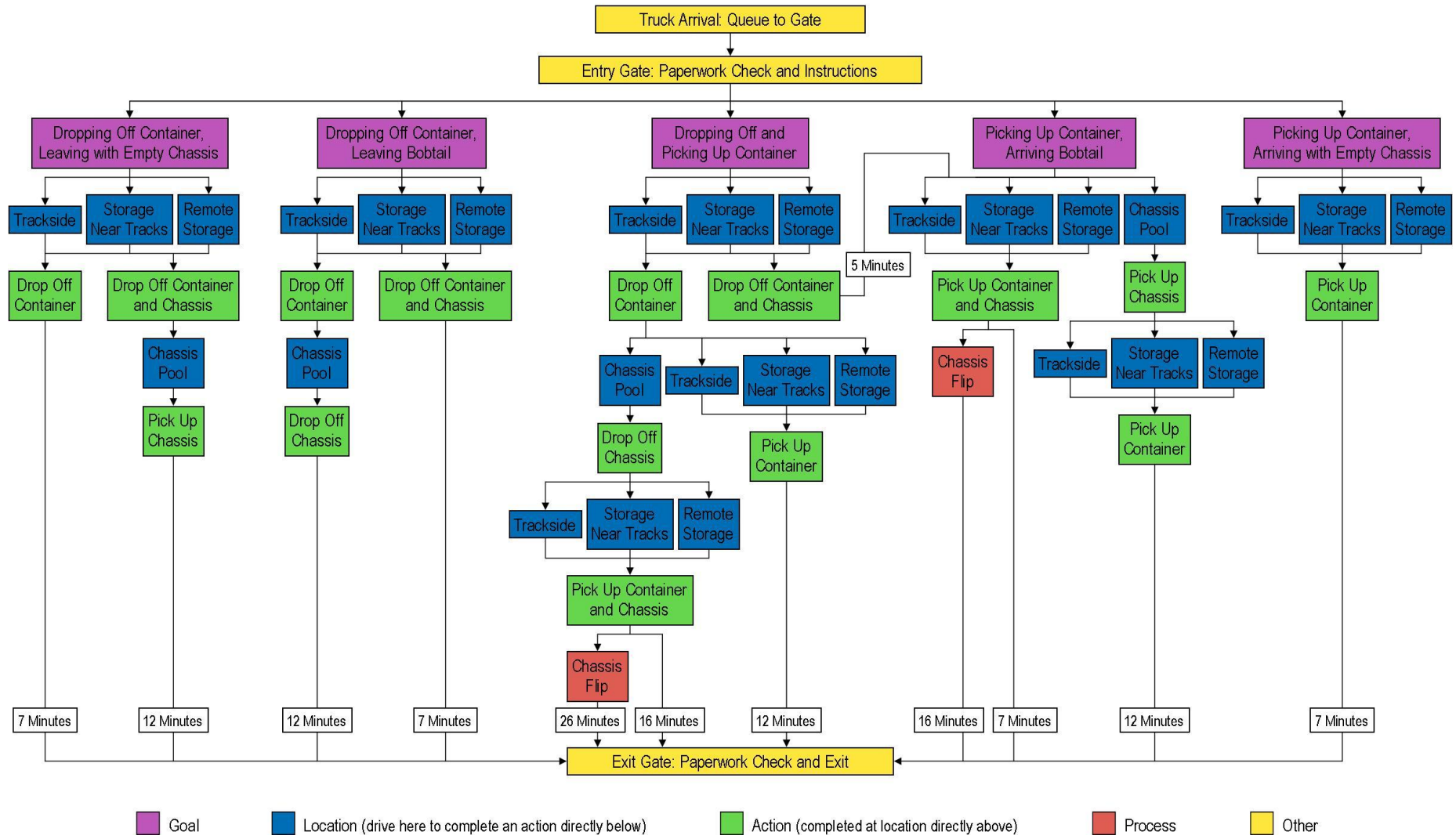


6273 ft

Image IndianaMap Framework Data  
Image NOAA  
Image USDA Farm Service Agency

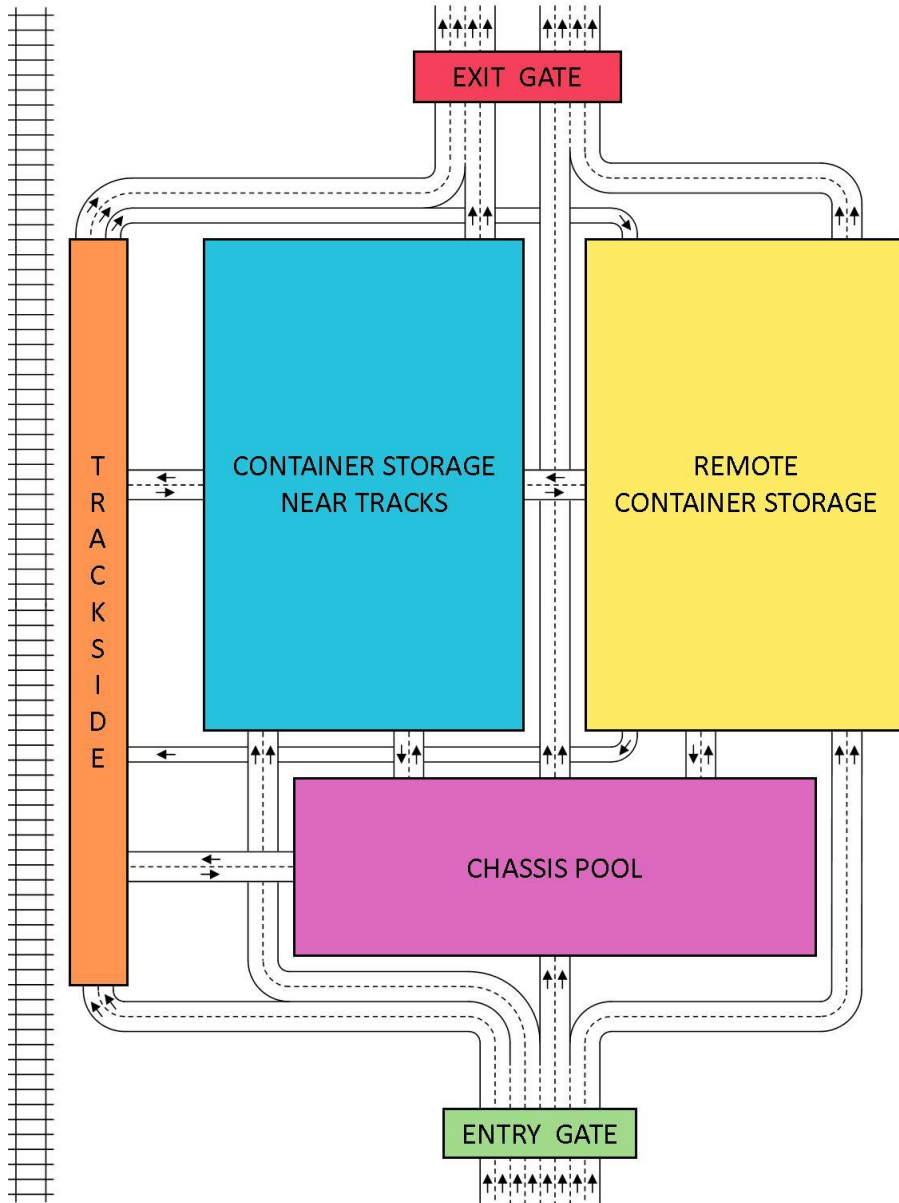
©2009 Google

# Truck Processes: Conventional Terminal





# Conventional Terminal Diagram

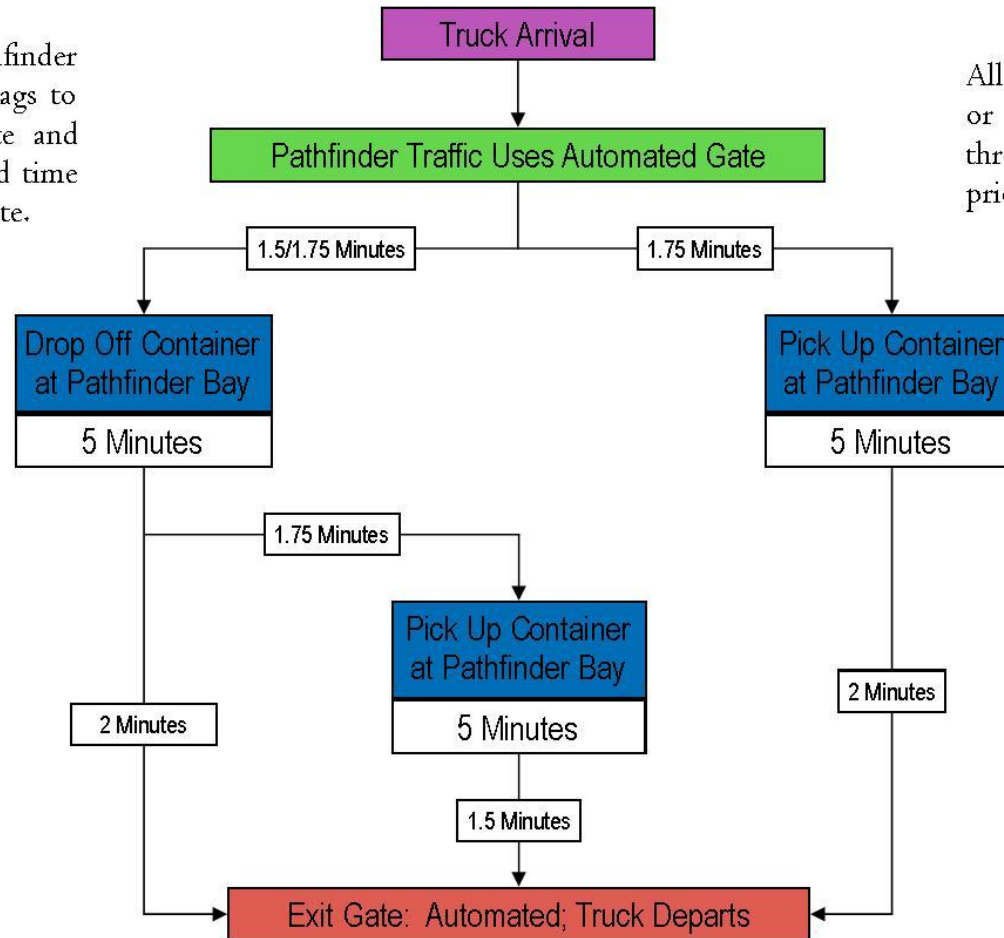


Conceptual diagram showing truck flow in a conventional intermodal terminal. Notice that most traffic within the facility is two-way.



# Truck Processes: Terminal with Pathfinders

All tractors using the Pathfinder system will have RFID tags to open the automated gate and record time of arrival and time of departure at the exit gate.



All data pertaining to pick up or delivery is pre-arranged through the Pathfinder system prior to entering the terminal.

Outbound containers are delivered to designated corridor. Pathfinder bays, identified by numbers, ensure no miss-parked containers. The truck driver operates the Pathfinder to load the container into the designated Pathfinder bay. Blocking is automatic.

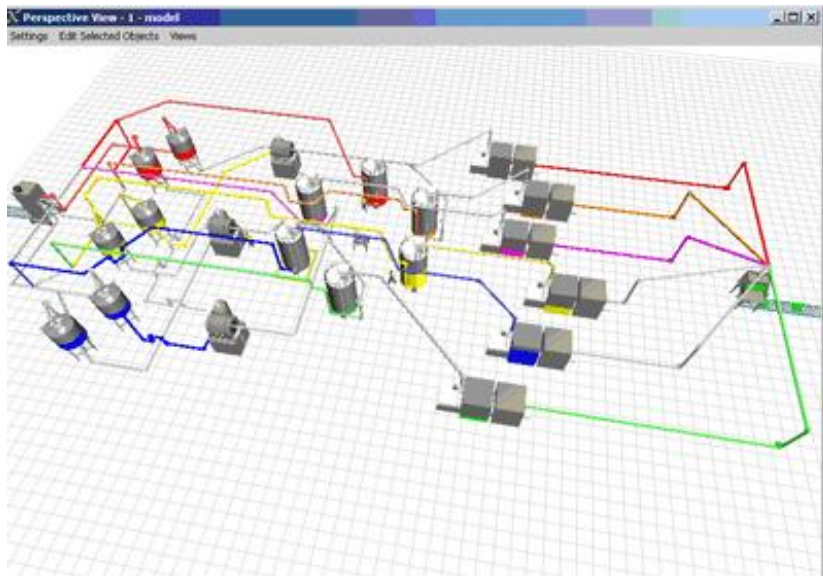
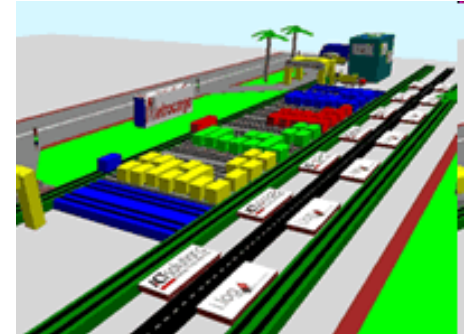
For inbound pick up, container/ Pathfinder information is sent via communication software to the truck line the moment that the container is set in the Pathfinder bay.





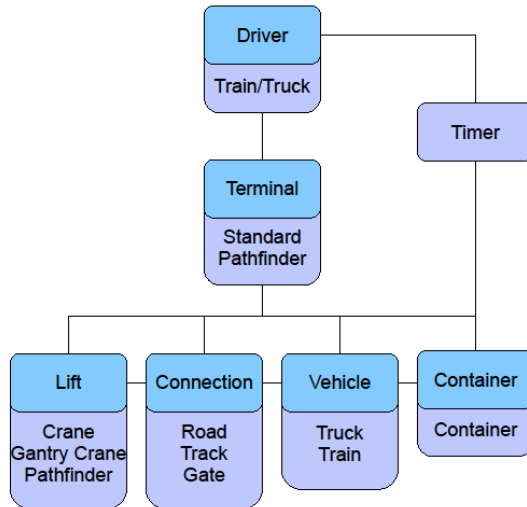
# Simulation Programs

*Flexsim*



# Simulation Results (custom)

## Intermodal Systems Simulator



```

PathfinderSolution - WordPad
File Edit View Insert Format Help
import java.util.Random;
import java.util.ArrayList;

public class PathfinderSolution implements Terminal {
    //cranes:
    //assumes containers are always where they are needed to be
    //
    private Random random = new Random();
    private int railroads, gantryperrail;
    private Rail rails[];
    private int capacity;
    private int dropoffPercent; //percent of Trucks that are going to drop off a container
    private int pickupPercent; //percent of trucks dropping off a container that are picking one up too
    private int timeBetweenTrains = 600; //5 min between two trains

    private int lifts = 0;
    private int trucks = 0;
    private int trains = 0;
    private long trucktime = 0;
    private long traintime = 0;

    private class Rail {
        int status = 0; //0: waiting for train, 1: train is being unloaded, 2: train is being loaded
        int containers; // # of containers in rail
        int count = 0; //counter for the train
        int train = 0; //length of the train
        int enteredAt = 0; //time the train entered
        int[] counters; //a counter for each gantry crane
        ArrayList<Truck> trucks = new ArrayList<Truck>(); //list of trucks at the rail
        public Rail(int cranes, int containers, int time) { //initialize the Rail
            enteredAt = time;
            counters = new int[cranes];
            containers = random.nextInt(40) + 60;
        }
    }

    private class Truck {

```

## Example Pathfinder(Future) Solution Simulation

~/simulation> java Simulator Pathfinder 3 80 30

\*\*\*\*\*

\* Pathfinder Solution \*

\*\*\*\*\*

\* Settings: Railroads = 3

\* Settings: Cranes Per Railroad = 1

\*\*\*\*\*

\* Lifts Per Hour = 104.33

\* Trucks Per Hour = 172.00

\* Trains Per Hour = 0.73

\* Average Truck Duration Within Terminal = 5.10 minutes

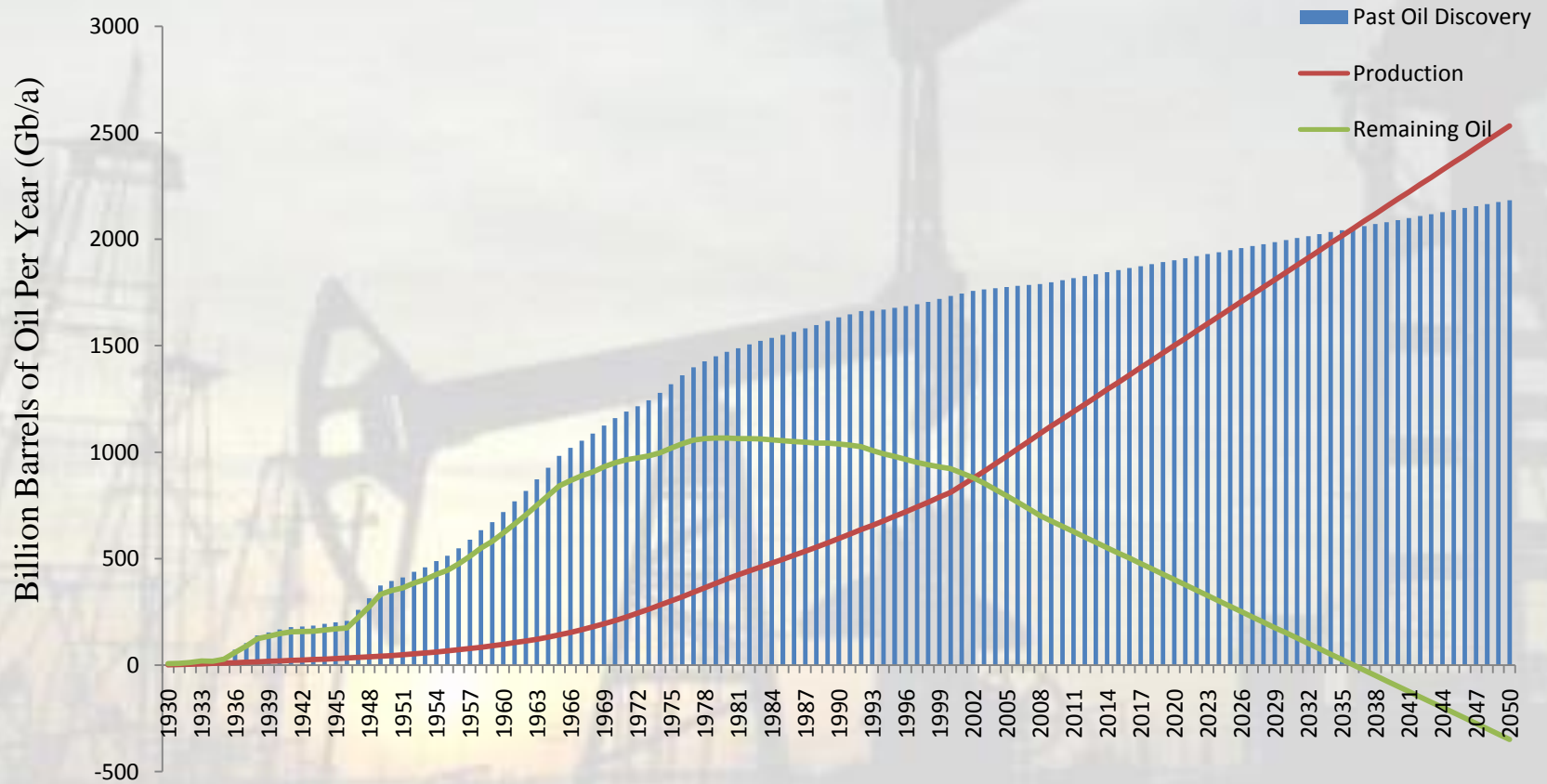
\* Average Train Duration Within Terminal = 161.02 minutes

\*\*\*\*\*






# Peak Oil

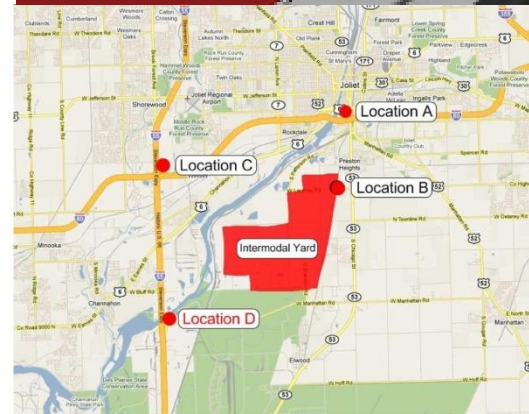
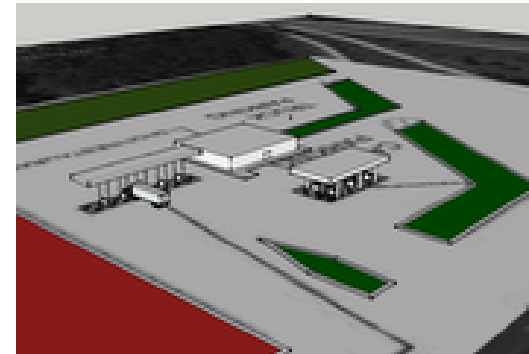
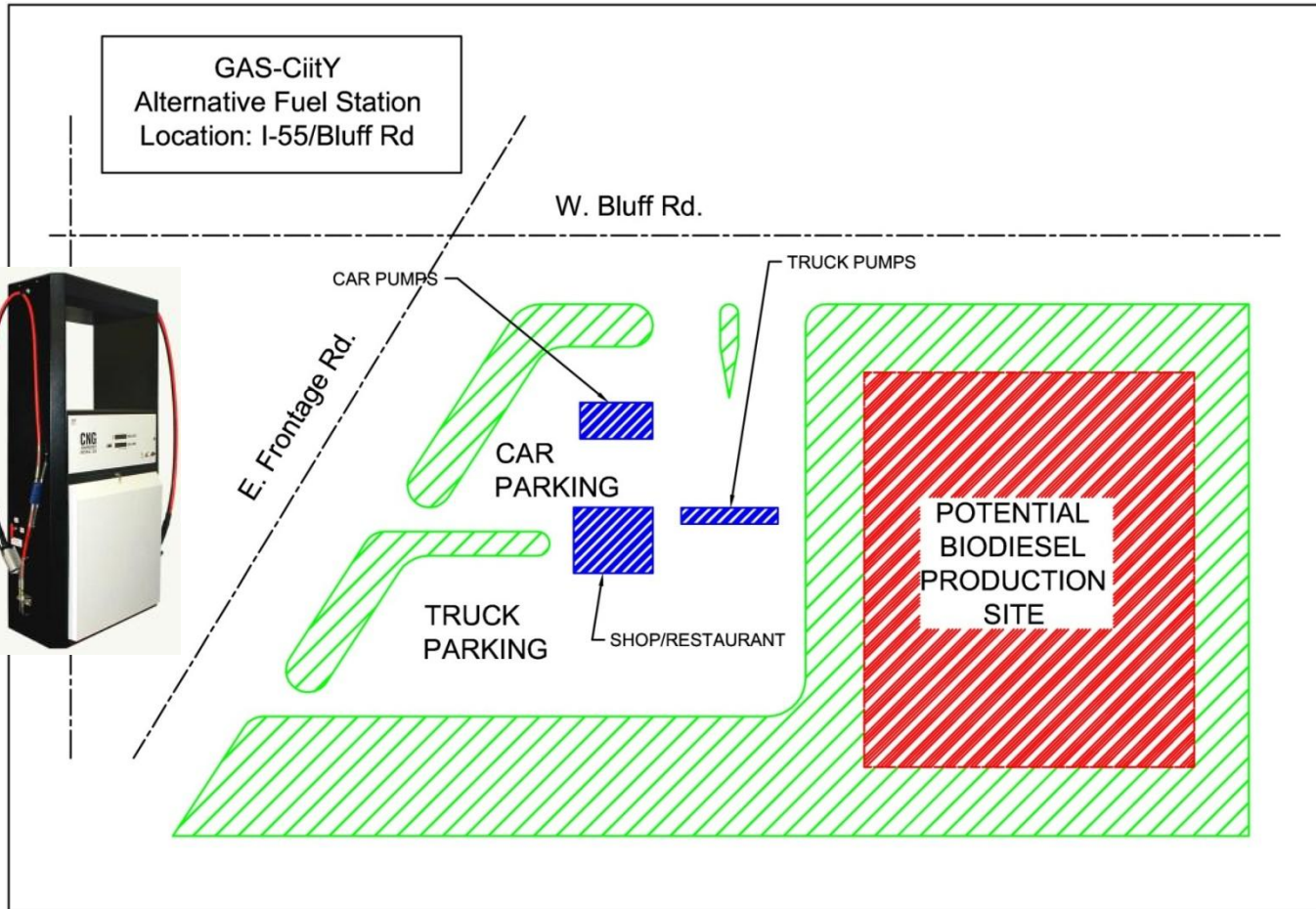
The Growing Gap  
Regular Conventional Oil: Discovery, Production & Remaining



# Alternative Fuels

Fuel Type	Availability	Cost of fuel (gal)	Vehicle Alterations Required	Processing	Efficiency	Emmissions	Pros / Cons	Infrastructure
Vegetable Oil (WVO, SVO)						<p style="text-align: center;"><b>Ethanol</b></p> $\left(\frac{1300 \times 10^3 J}{\text{mol}}\right) \left(\frac{1 \text{ mol}}{46 \text{ g}}\right) \left(\frac{786 \text{ kg}}{\text{m}^3}\right) \left(\frac{\text{m}^3}{264 \text{ gal}}\right) X = 6.225 \times 10^{20} J$ $\left(\frac{7.40 \times 10^{15} \text{ gal}}{1}\right) \left(\frac{57.38 \times 10^6 \text{ gal}}{\text{year}}\right) = 1.28 \times 10^8 (\text{years} \cdot \text{plants})$ $27(\text{years})X = 1.28 \times 10^{14} (\text{years} \cdot \text{plants})$ $X = 185185 \frac{\text{plants}}{\text{year}}$		
Biodiesel								
Algae Fuel (biodiesel/biobutanol)								
Hydrogen fuel cell								
Propane/LPG						<p style="text-align: center;"><b>Hydrogen</b></p> $\left(\frac{286 \times 10^3 J}{\text{mol}}\right) \left(\frac{1 \text{ mol}}{2 \text{ g}}\right) \left(\frac{1000 \text{ g}}{\text{kg}}\right) \left(\frac{0.0899 \text{ kg}}{\text{m}^3}\right) \left(\frac{\text{m}^3}{264 \text{ gal}}\right) X = 6.225 \times 10^{20} J$ $X = 1.27 \times 10^{16} \text{ gallons}$ $\left(\frac{1.27 \times 10^{16} \text{ gal}}{1}\right) \left(\frac{2.31 \times 10^7 \text{ m}^3}{\text{year}}\right) \left(\frac{\text{m}^3}{264 \text{ gal}}\right) = 2.08 \times 10^6 (\text{years} \cdot \text{plants})$ $27(\text{years})X = 2.08 \times 10^6 (\text{years} \cdot \text{plants})$ $X = 7.70 \times 10^4 \text{ plants}$ $X = 2852 \frac{\text{plants}}{\text{year}}$ <p style="text-align: center;"><b>Biodiesel</b></p> $X = 4.41 \times 10^{12} \text{ gallons}$ $\left(\frac{4.41 \times 10^{12} \text{ gal}}{1}\right) \left(\frac{8228571 \text{ gal}}{\text{year}}\right) = 535937 (\text{years} \cdot \text{plants})$ $X = 1.98 \times 10^4 \text{ plants} \Rightarrow 735 \frac{\text{plants}}{\text{year}}$		
Ethanol								
CNG								
LNG								

# Alternative Fuel Station





# Value

- Value of project, benefits drawn from project
  - A more efficient intermodal freight terminal allows for less materials, less time required for drivers, and less room for error
  - With oil running out and greenhouse gas emissions rising, we *need* alternatives to keep our economy running and also keep the earth as an inhabitable environment
- Major impacts, risks and challenges
  - Faster more efficient yards may eliminate jobs
  - Capital development and installation
- Ethical Issues
  - Land use and neighboring area
  - Alternative fuel restrictions (EPA fines \$30,000 for engine/tank alterations without a permit)
- Next Step for continuing IPRO = in-city = Harvey, Illinois

# In Conclusion



- Increased reliance on basic freight traffic
- The importance of implementing alternative fuel for practical, economical and ecological purposes