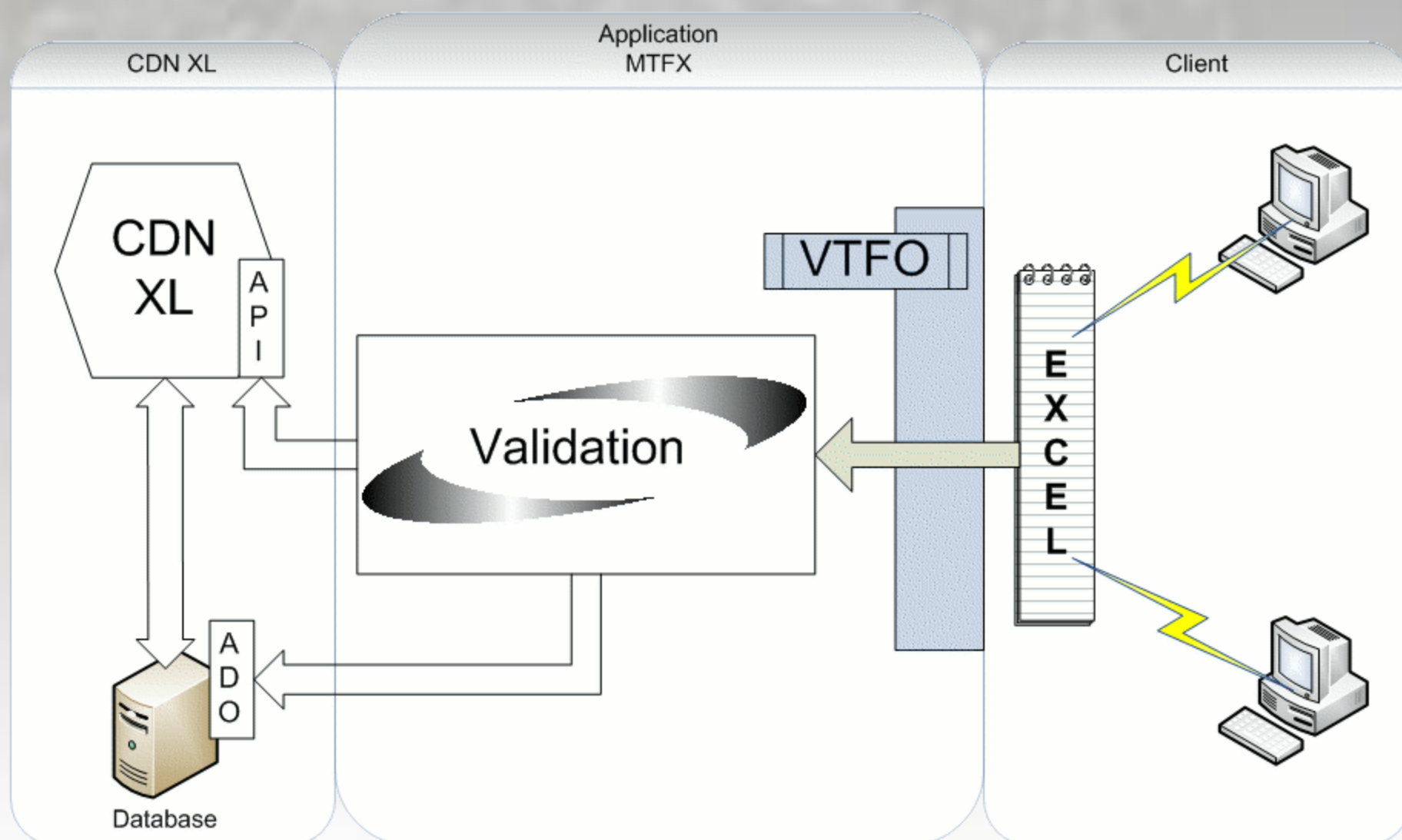
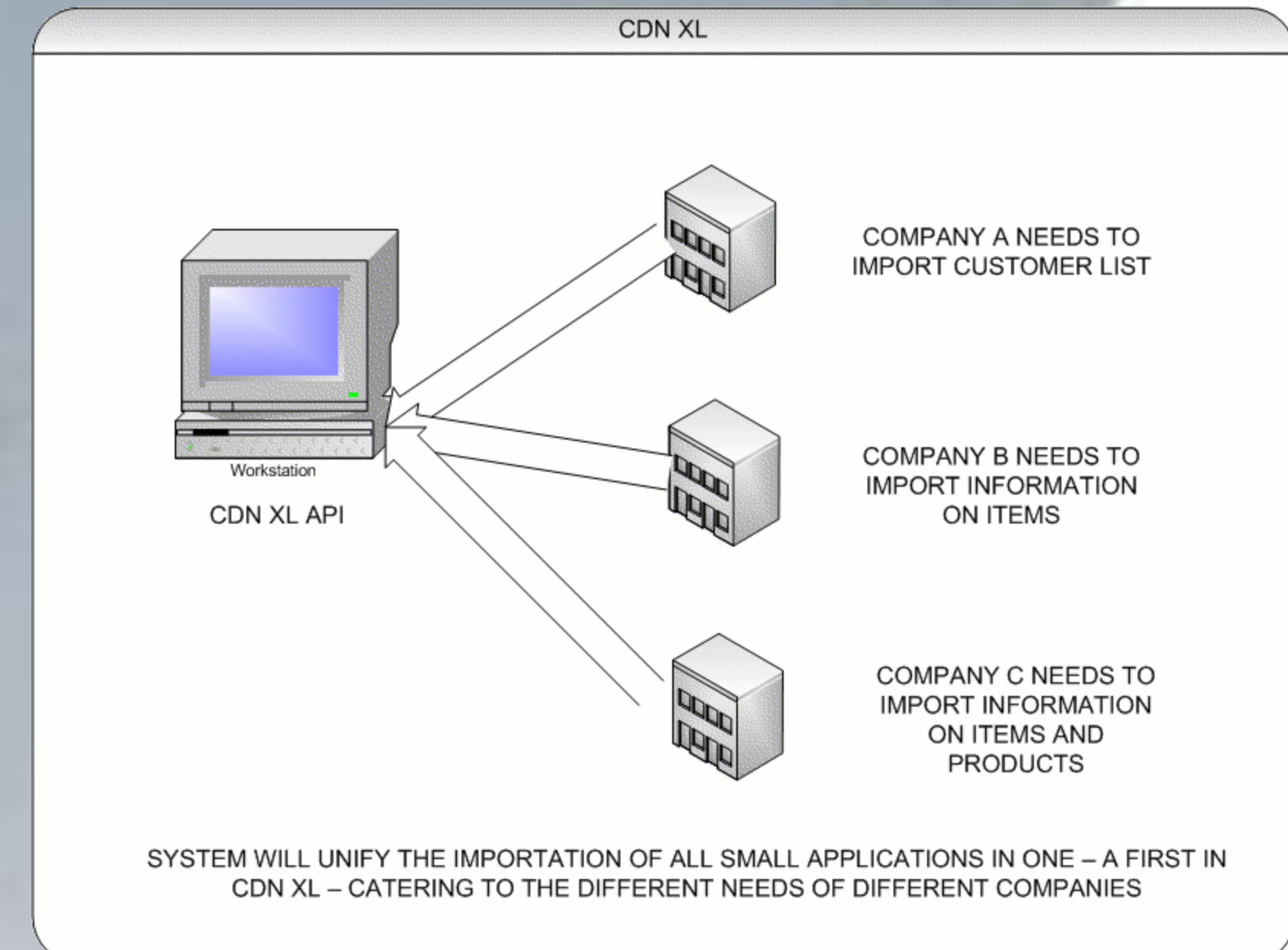


PROBLEM:

Integrating files into an ERP is time consuming. When a customer is ready to transfer operations into CDN XL, a deployer is required to make new importation programs to import the company's data. The integration process being too slow could result in a loss of profit.

OBJECTIVE:

The main objective of the team is to create the application to provide the functionality of importing data from external, heterogeneous sources to CDN XL database. CDN XL API will be used for most of the data, and ADO API will be used for data that cannot be transported by the CDN XL API.

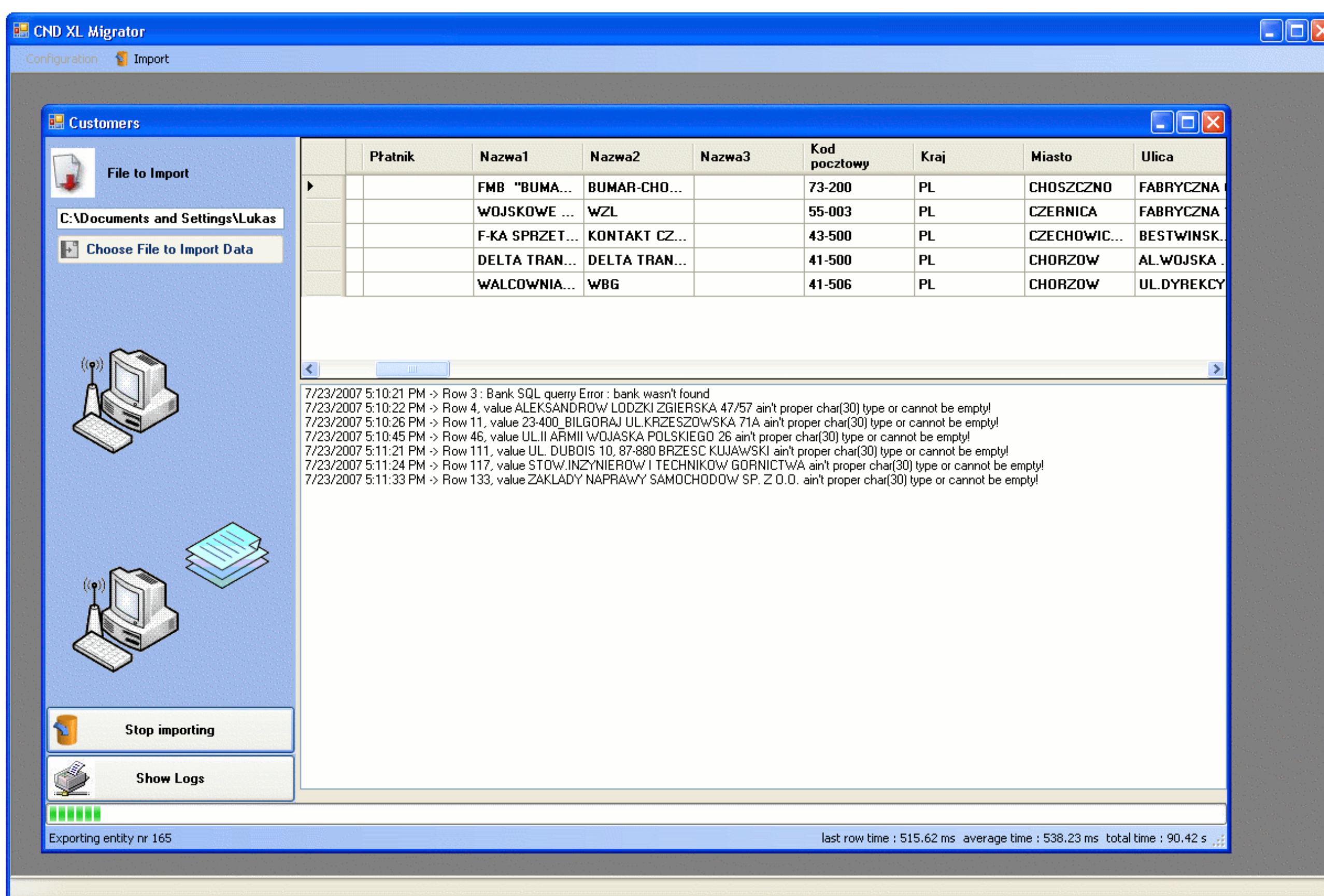


Model of Data Migration into CDN XL

The data to be integrated is in EXCEL template files which are validated to ensure correct data collection in CDN XL. Data is then imported to CDN XL by either API or ADO.

SOLUTION: Make integration process simpler.

This process could be shortened by having one program to import various data types from different files. This new application, which saves time in integration, will be a key selling point to businesses that are uncertain as to which ERP system to select.



Interface of the Application



Group Members with Supervisor Tomasz Masternak