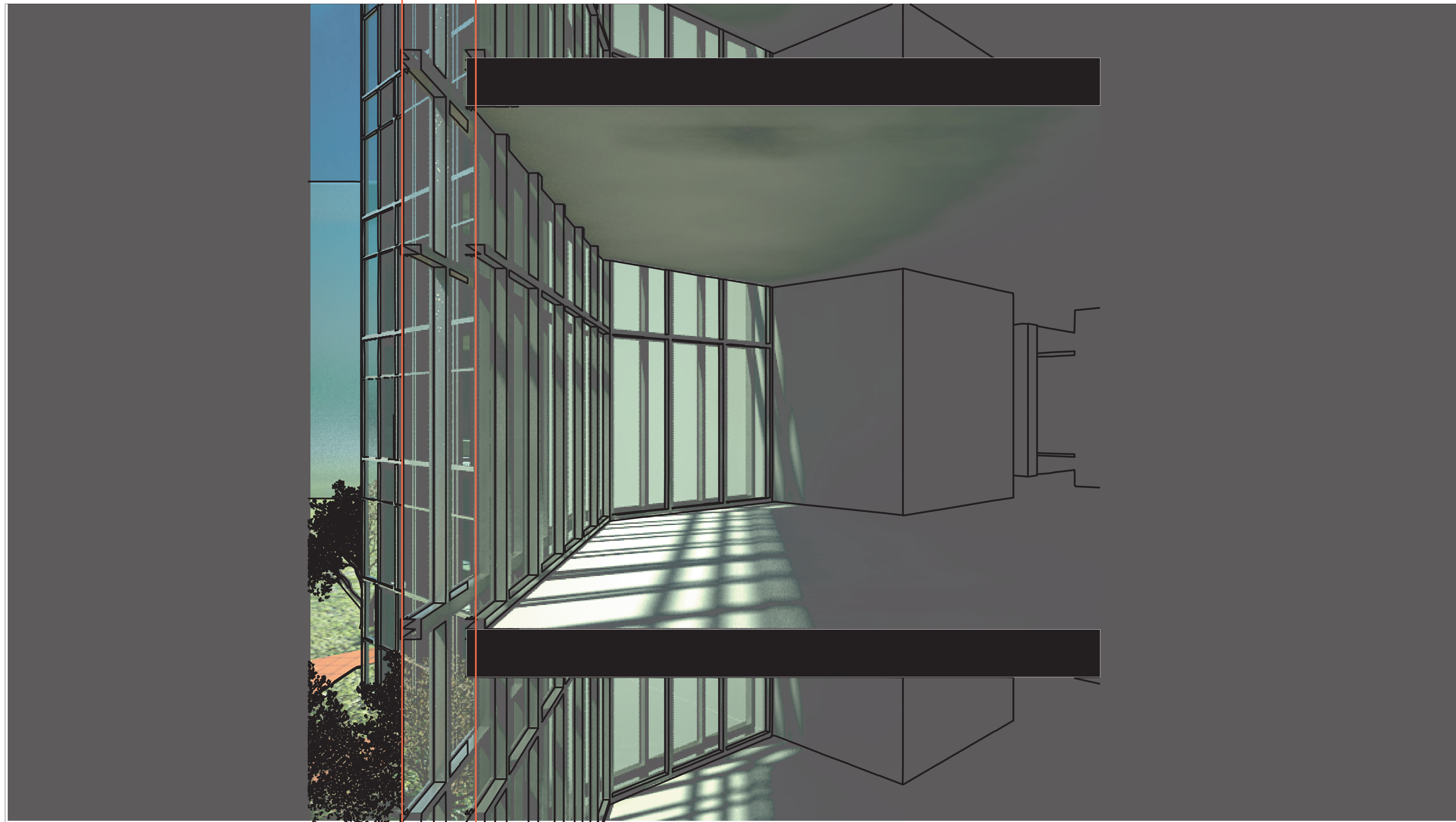


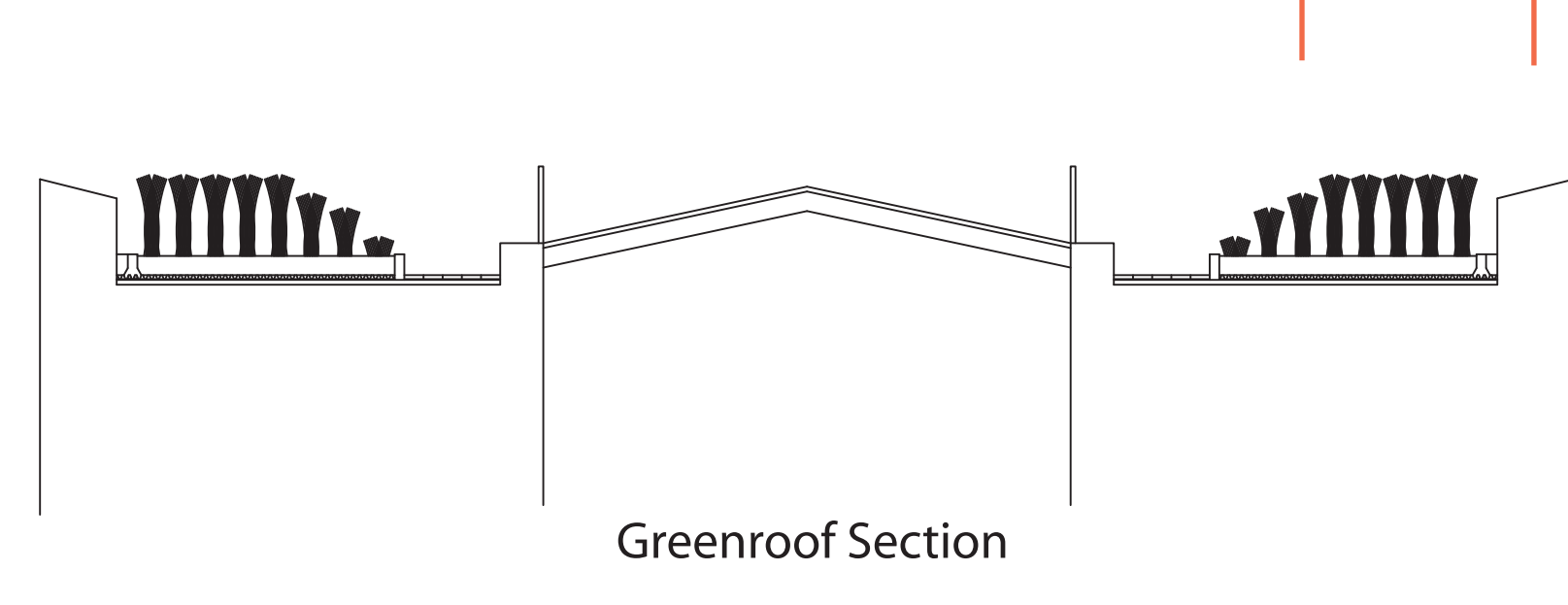
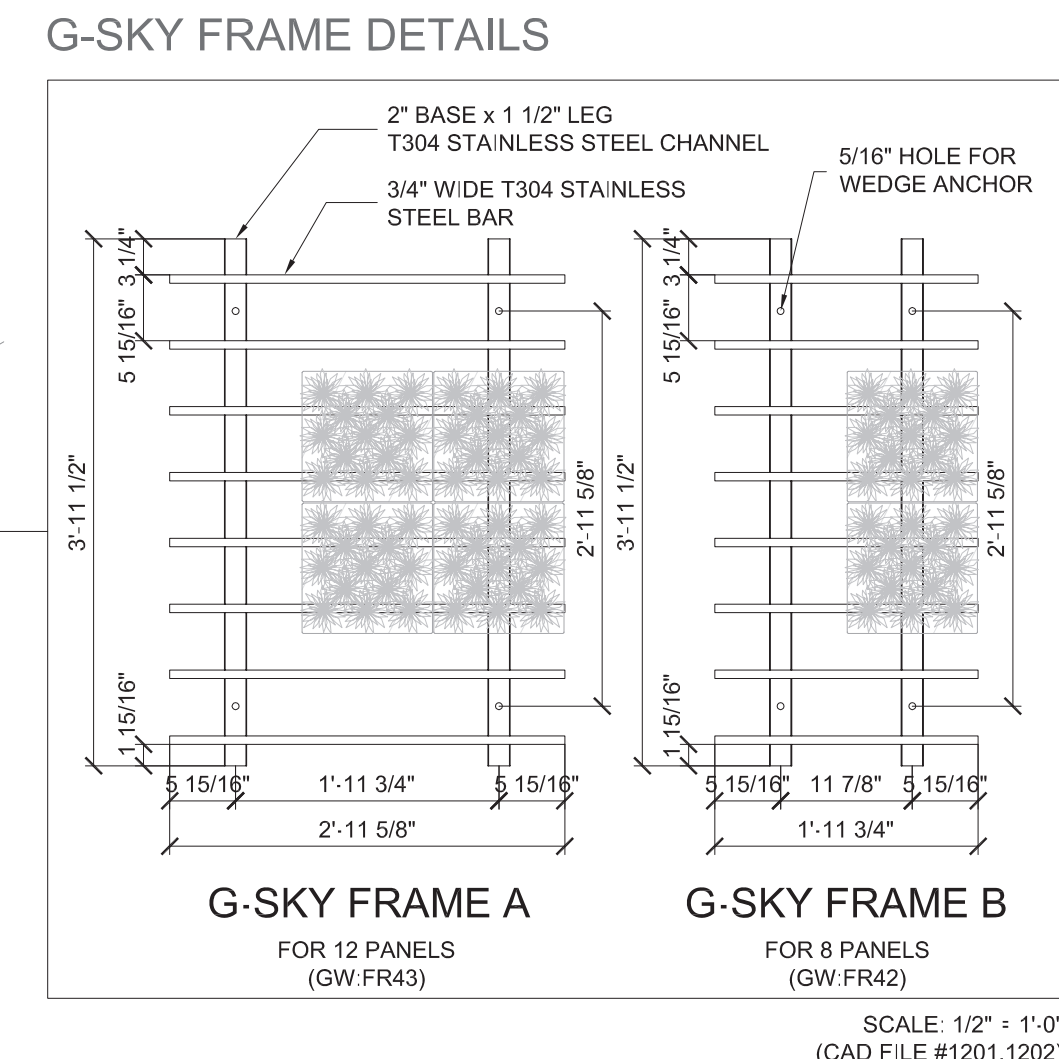
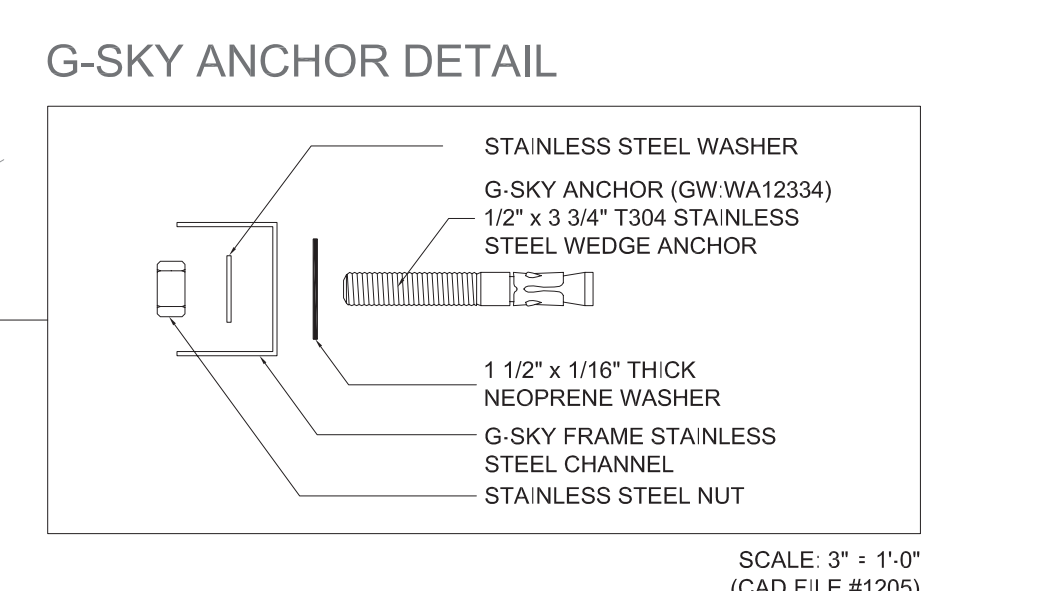
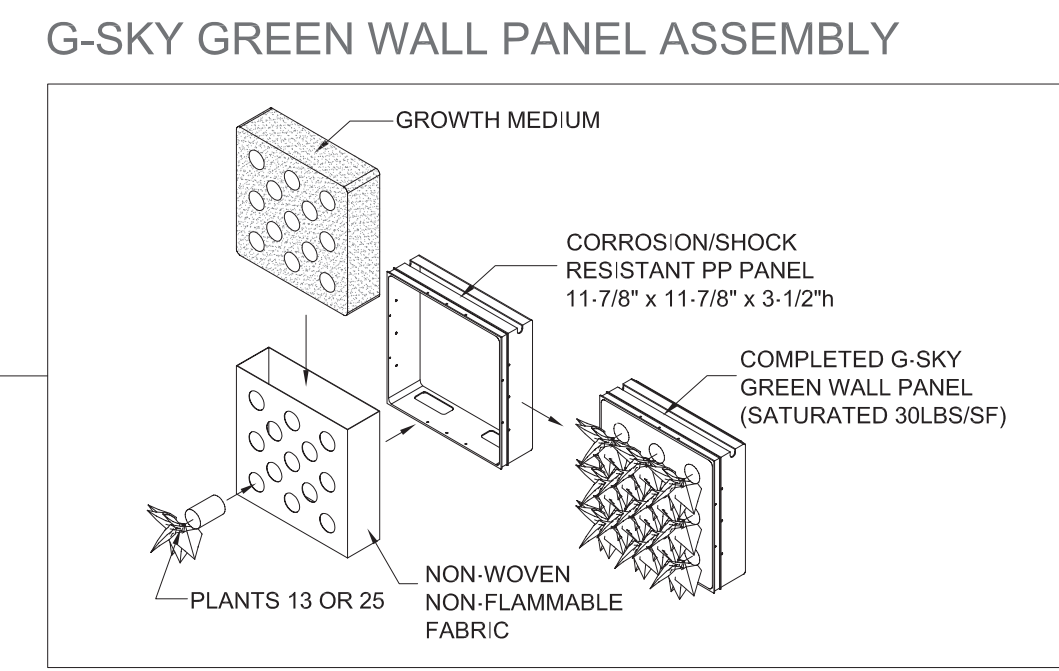
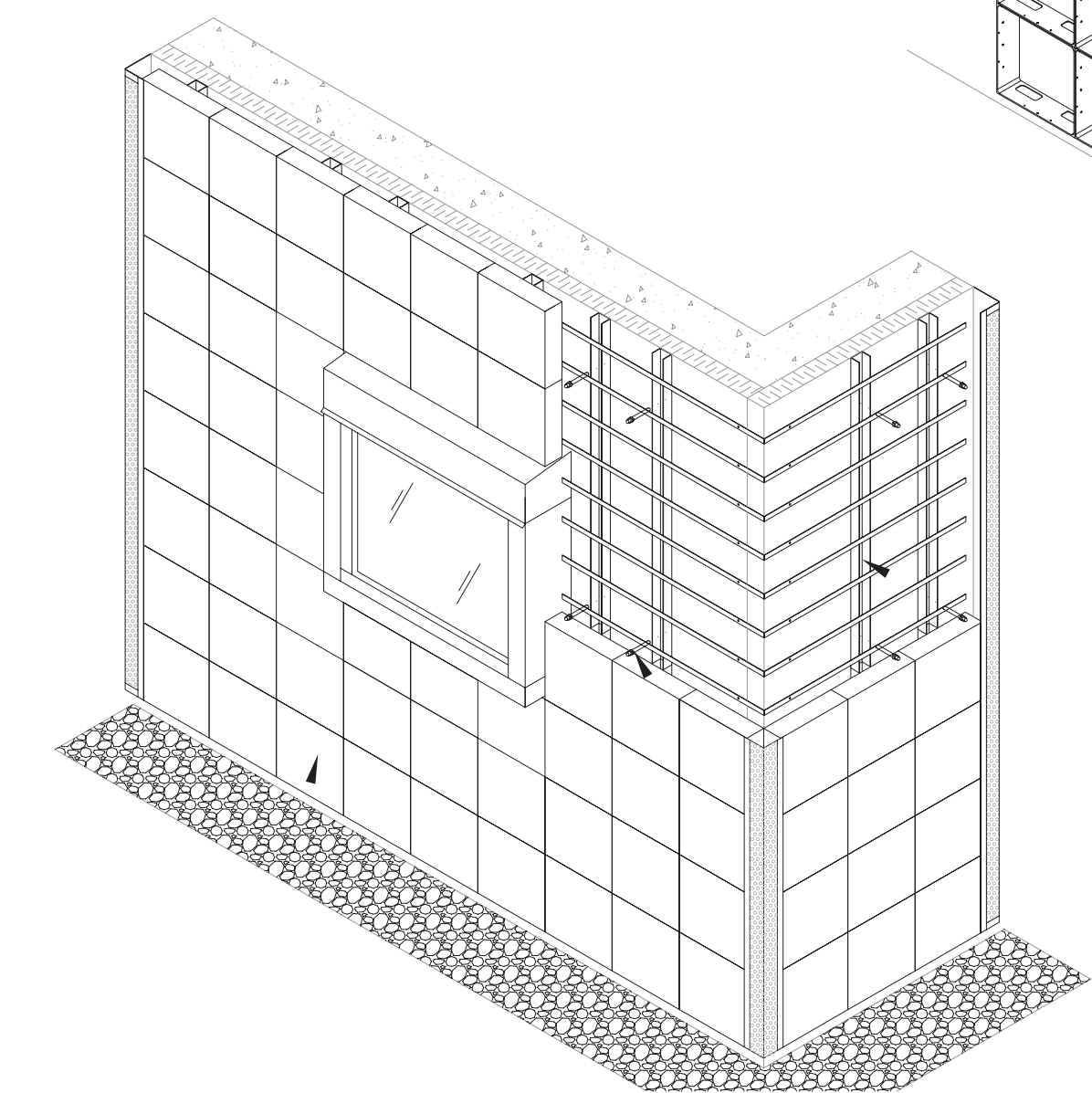
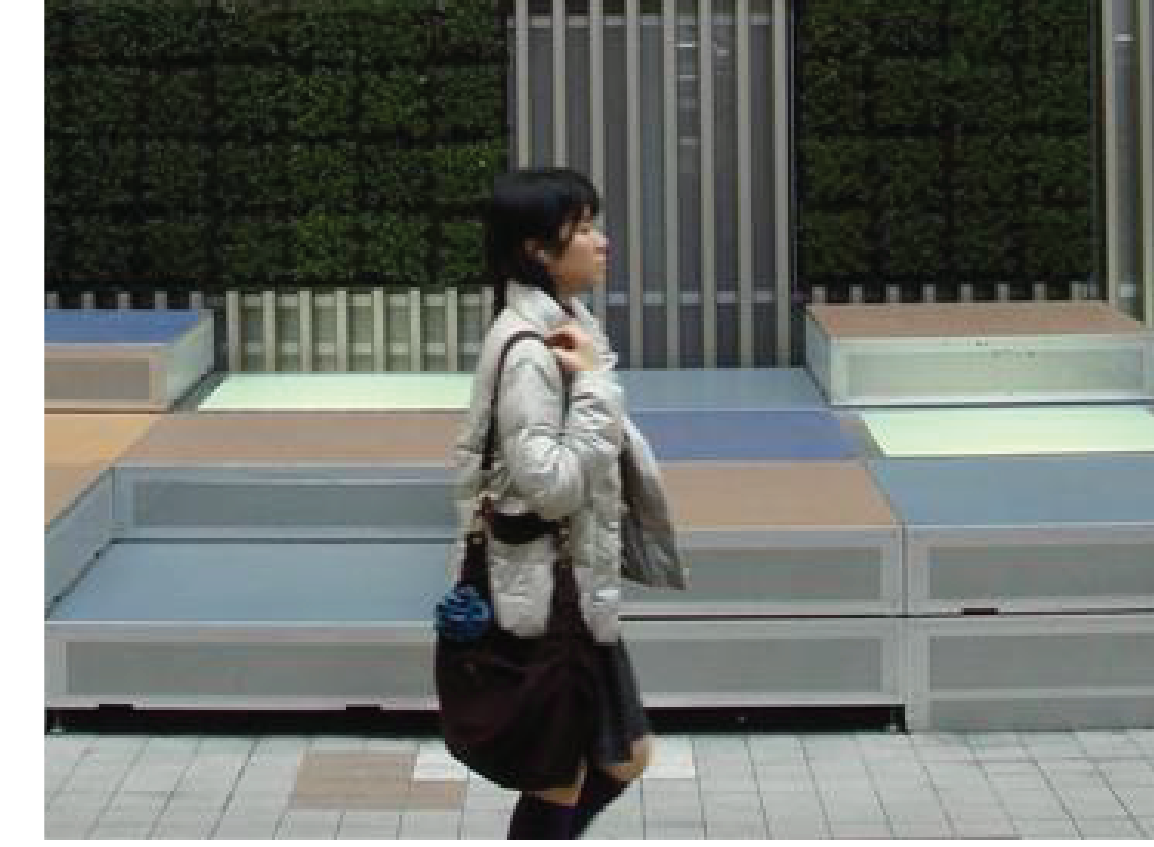
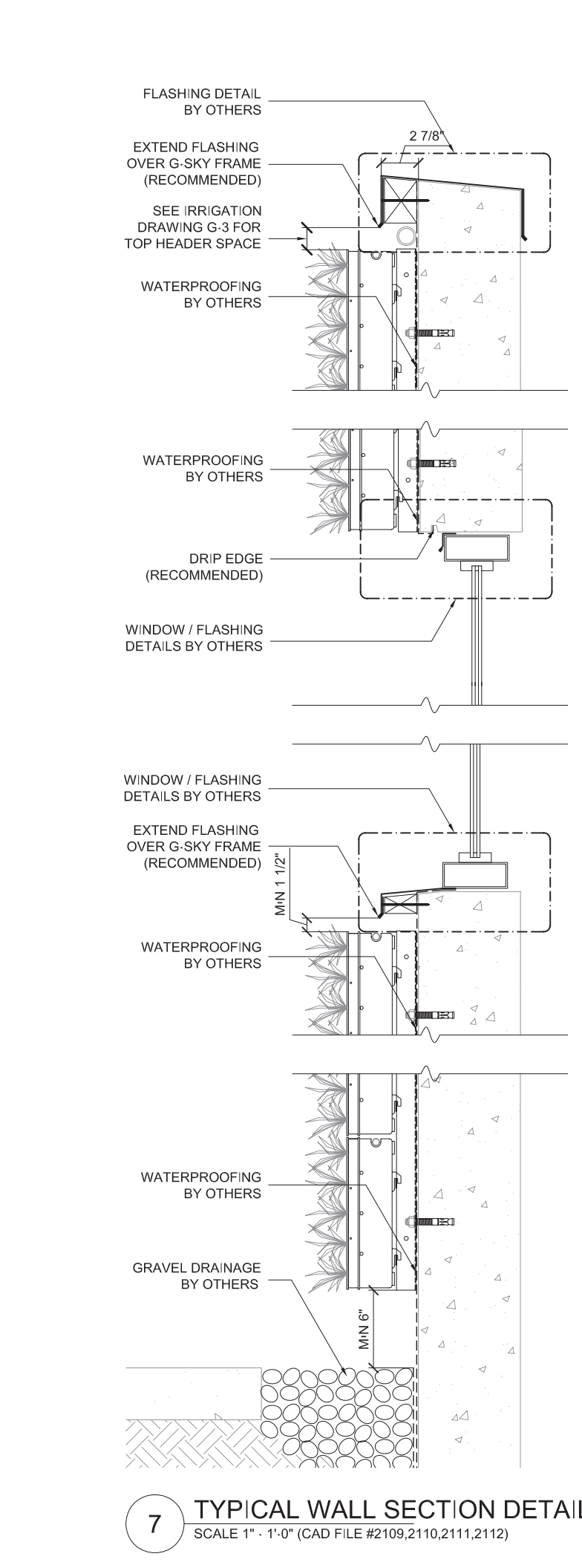
# Materials & Building Systems

**Double Skin System:**  
This system allows for increased performance of the envelope. Use of high performance glass along with increasing the air space in between the two skins increases the R-value of the glazed assembly.

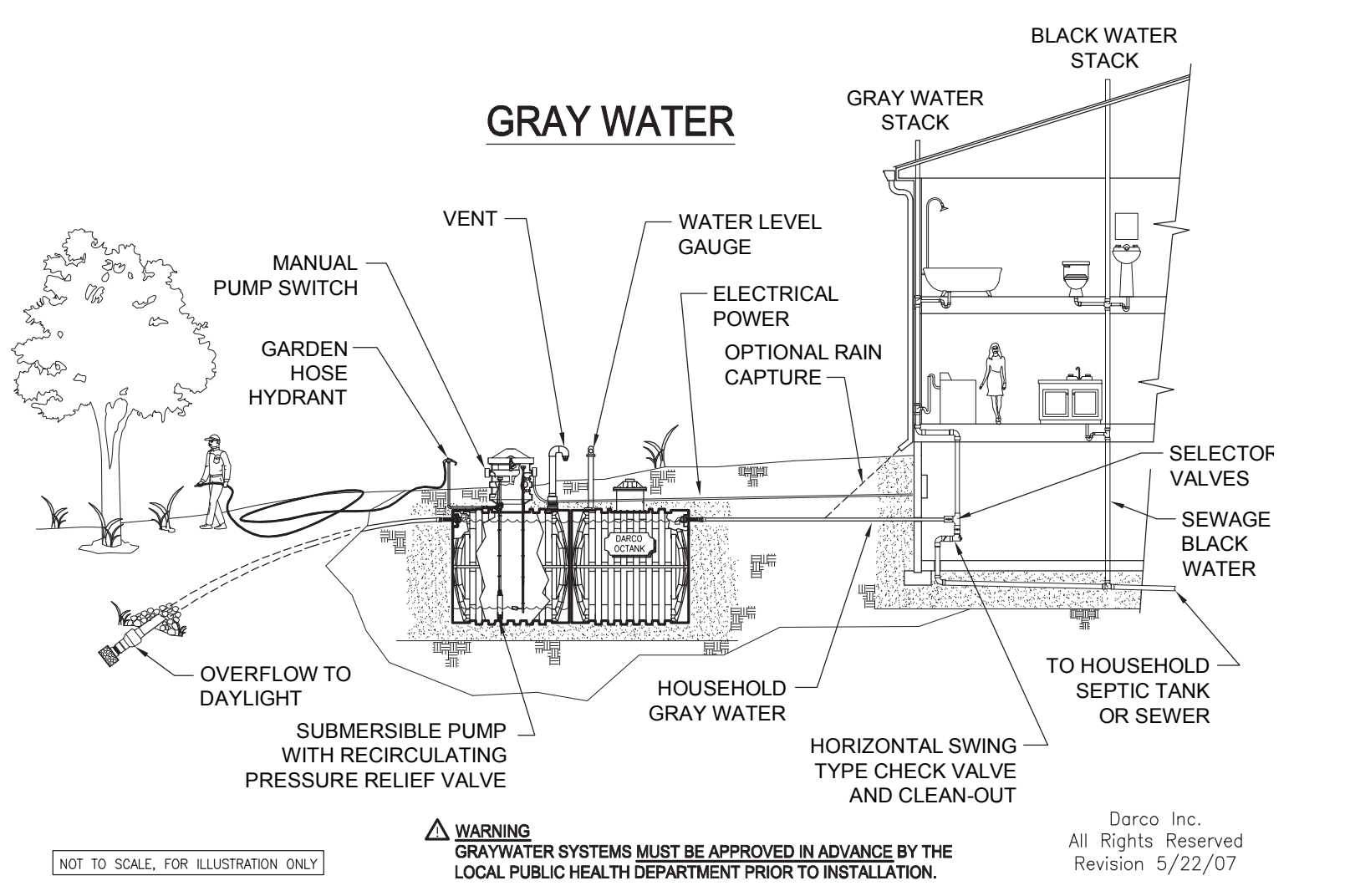
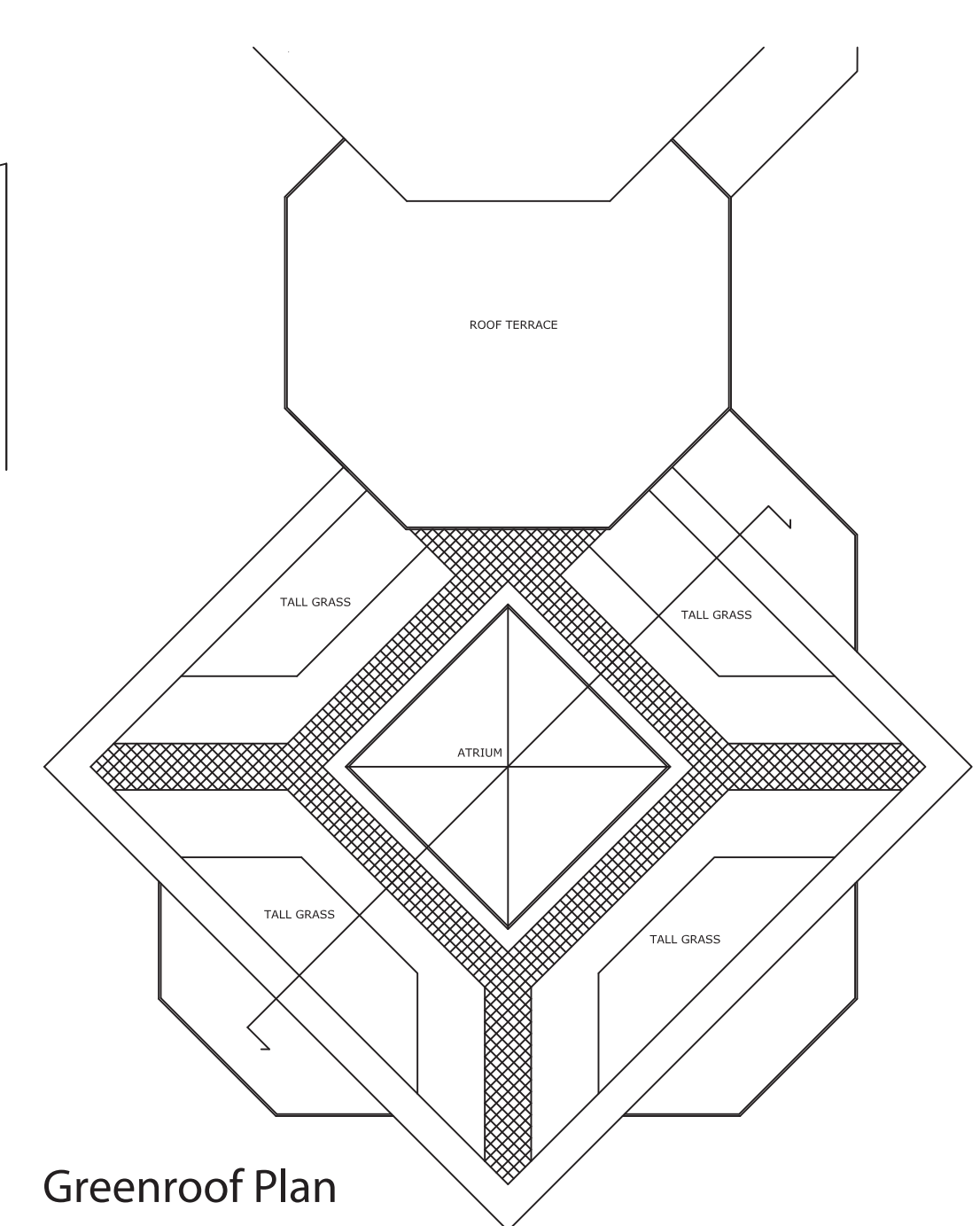


M:\P\Illustrator1.jpg 0000

## Gsky Green Wall Panels



**Greenroof:**  
We virtually decreased the building footprint by adding a greenroof to the lower tower. It reduces storm water runoff and creates a pleasant view for residents while incorporating native prairie grasses.



**GREY WATER CALCS**  
Combined - if no gray water recycling

Total Hot SFU:	253.725	Total Hot GPM:	74
Total Cold SFU:	949.725	Total Cold GPM:	200
Total SFU:	1309.9	Total GPM:	240

Hot Water Pipe Size:	2 1/2"
Cold Water Pipe Size:	3 1/2"
Main Pipe size:	3 1/2"

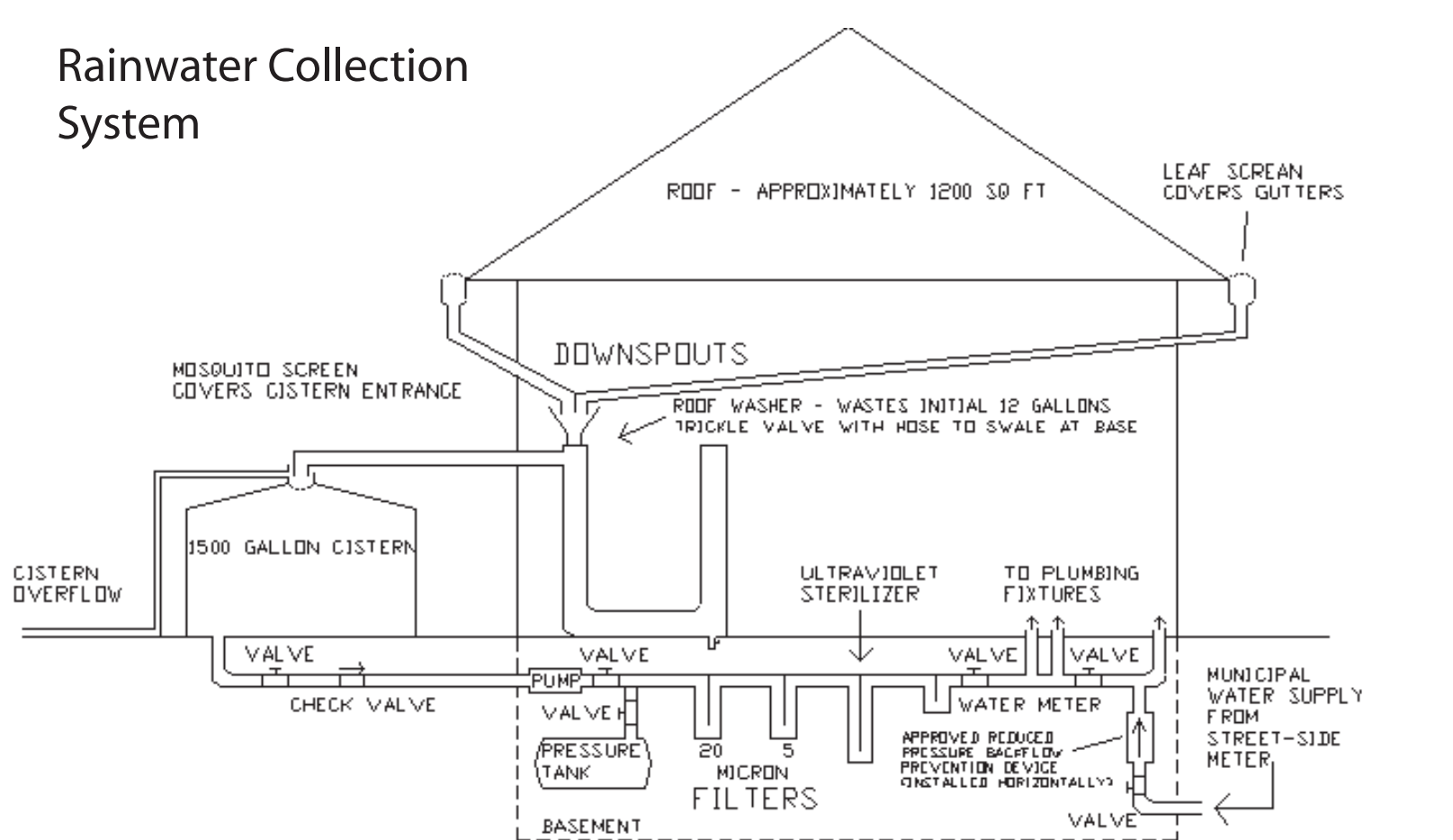
  

Potable water use - if gray water recycling is used

Total Hot SFU:	253.725	Total Hot GPM:	74
Total Cold SFU:	254.725	Total Cold GPM:	100
Total SFU:	614.9	Total GPM:	155

Hot Water Pipe Size:	2 1/2"
Cold Water Pipe Size:	3"
Main Pipe size:	2 1/2"



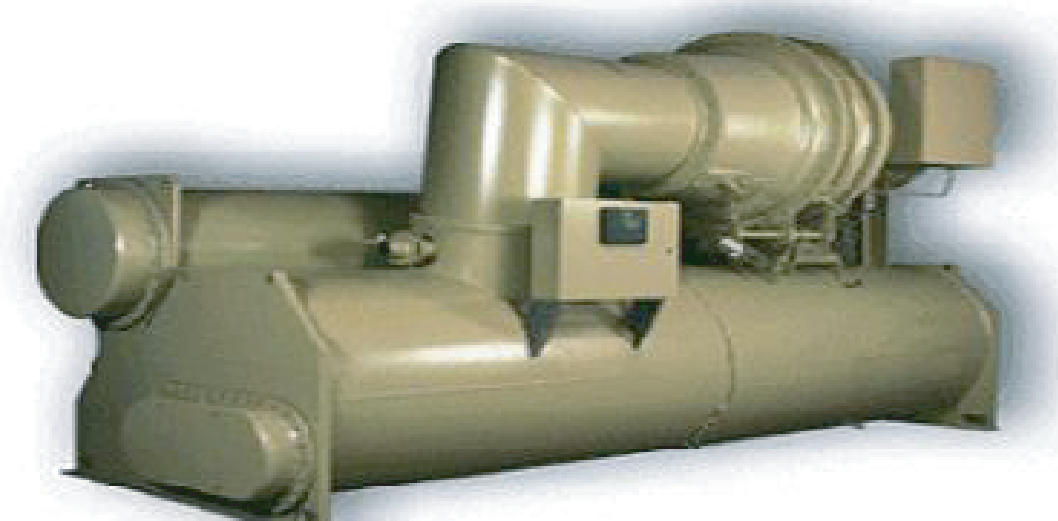
**Rainwater Collection: Benefits**  
-Savings of 30-50% of total water bill if used for irrigation-could be more if used inside building  
-Free water for irrigation and toilet flushing and with proper treatment, laundry.  
-Saves owner money after install  
-Decreases urban system flooding during storms

**Negative Aspects**  
-Higher initial costs for pumps, piping, filters  
-Need for more room in building for storage tanks



### EarthWise CenTraVac Centrifugal Chiller

Lowest total refrigerant emissions rate in the industry

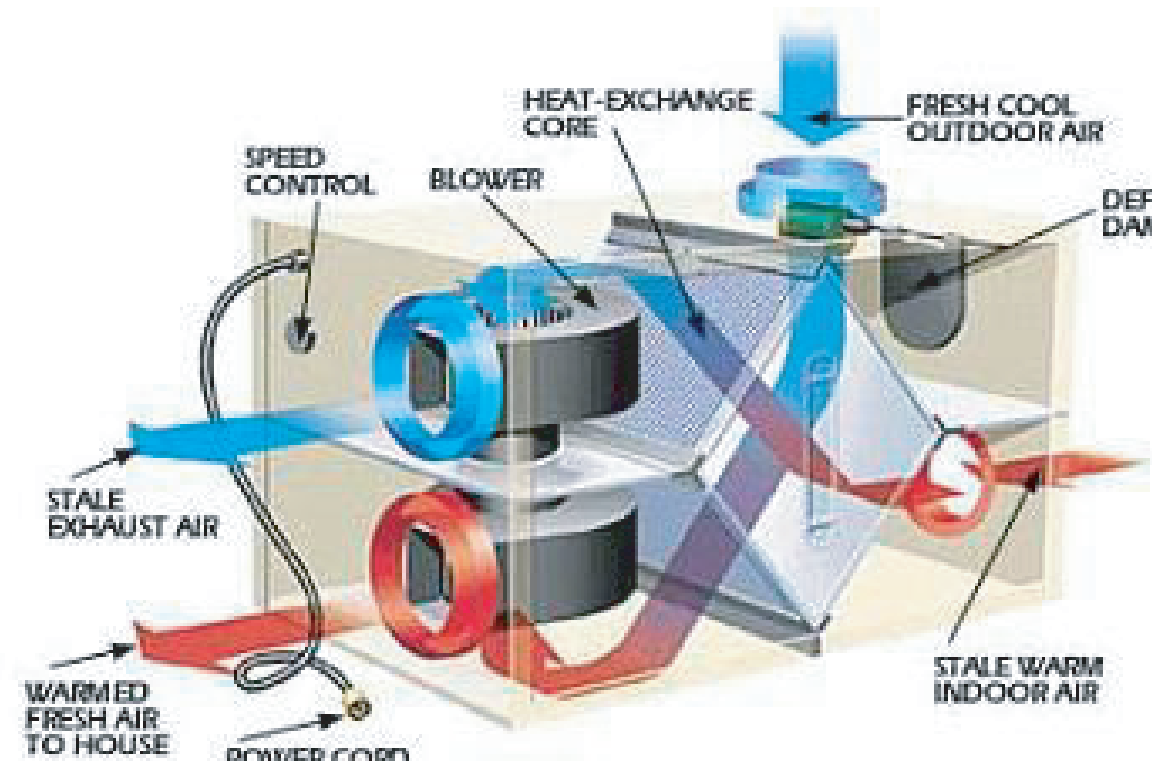


Primary Efficiency of 0.553 kW/ton  
12.5% more efficient than ASHRAE 90.1 require

### Heat Recovery System

How it works:

In heating season for example, the heat from the exhaust air is used to raise the temperature of the makeup outdoor air before it enters the air handling unit. This reduces the amount of energy needed to heat the outdoor air before supplying it to the building.



The selected unit heats up the outdoor air by 60°F in heating season and cools it by 15°F in cooling season.



### HALO RECESSED LED DOWNLIGHTING

**HALO LED FEATURES**

- Superior light quality
- Consumes 75% less energy compared to 80W BR30 incandescent lamp
- For use in new construction or existing applications
- Uses less than 12 watts
- 600 lumen output
- Projected 50,000 hour life
- Warm color temperature (3000°K with CRI over 80)
- Greater than 40 lumens per watt
- Dimmable
- Designed to last
- Virtually maintenance free
- Three year limited warranty

**H750ICAT Recessed Housing**

**ML706830 LED Module**

**494 Trim**

6" New Construction Housing, Module and Trim 24 Compliant

Model: H750ICAT, Module: ML706830, Trim: 494, White Reflect		GENERAL LIGHTING DIMENSION DATA	
DIMENSIONS (INCHES)		DIMENSIONS (MILLIMETERS)	
Overall Diameter	6.00	Overall Diameter	152.4
Mounting Hole Diameter	5.50	Mounting Hole Diameter	139.7
Trim Diameter	5.75	Trim Diameter	146.1
Trim Mounting Hole Diameter	5.25	Trim Mounting Hole Diameter	133.3
Trim Depth	0.75	Trim Depth	19.0
Trim Mounting Hole Depth	0.75	Trim Mounting Hole Depth	19.0
Trim Mounting Hole Diameter	5.25	Trim Mounting Hole Diameter	133.3
Trim Mounting Hole Depth	0.75	Trim Mounting Hole Depth	19.0
Trim Mounting Hole Diameter	5.25	Trim Mounting Hole Diameter	133.3
Trim Mounting Hole Depth	0.75	Trim Mounting Hole Depth	19.0

