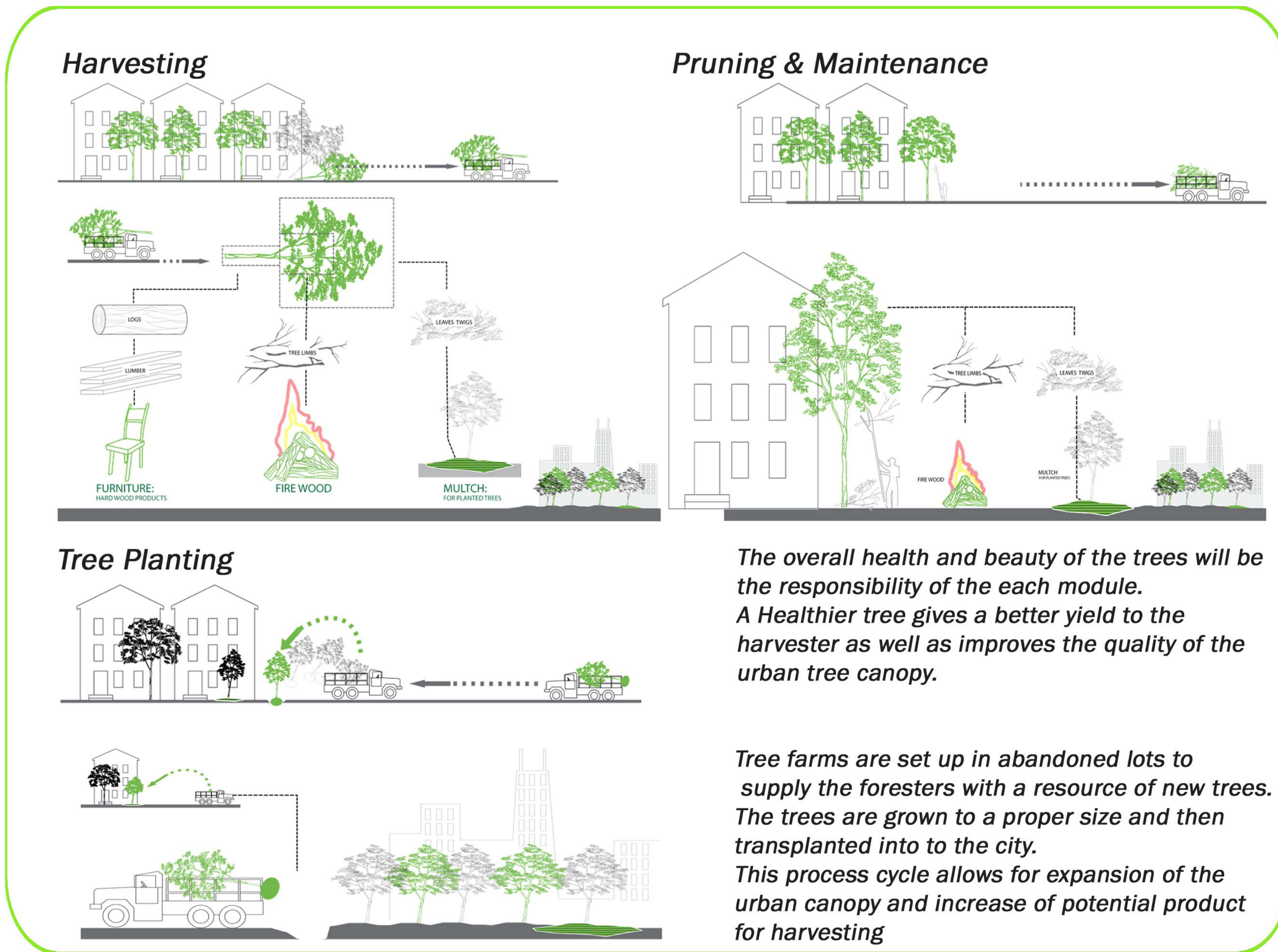


# I PRO 317 URBAN FORESTRY

## UrbForM - Urban Forestry Management



### The Mill Module

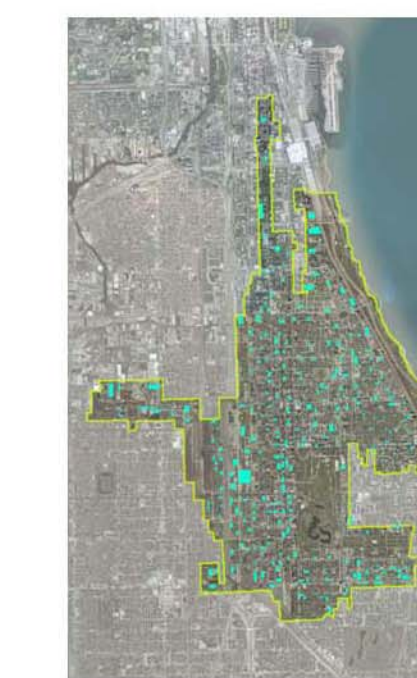
#### Space Requirement



- Operational Space Required:
- Wood storage uncut =2500 square ft
  - Wood storage milled =900 square ft
  - Kilns = 900 square ft
  - Sawmill =270 square ft
  - Fork truck =38 square ft
  - Truck dual axel =180 square ft
  - Truck with Flatbed =270 square ft
  - Office =500 square ft
  - Equipment storage =900 square ft
  - Total Area Need 6458 square feet

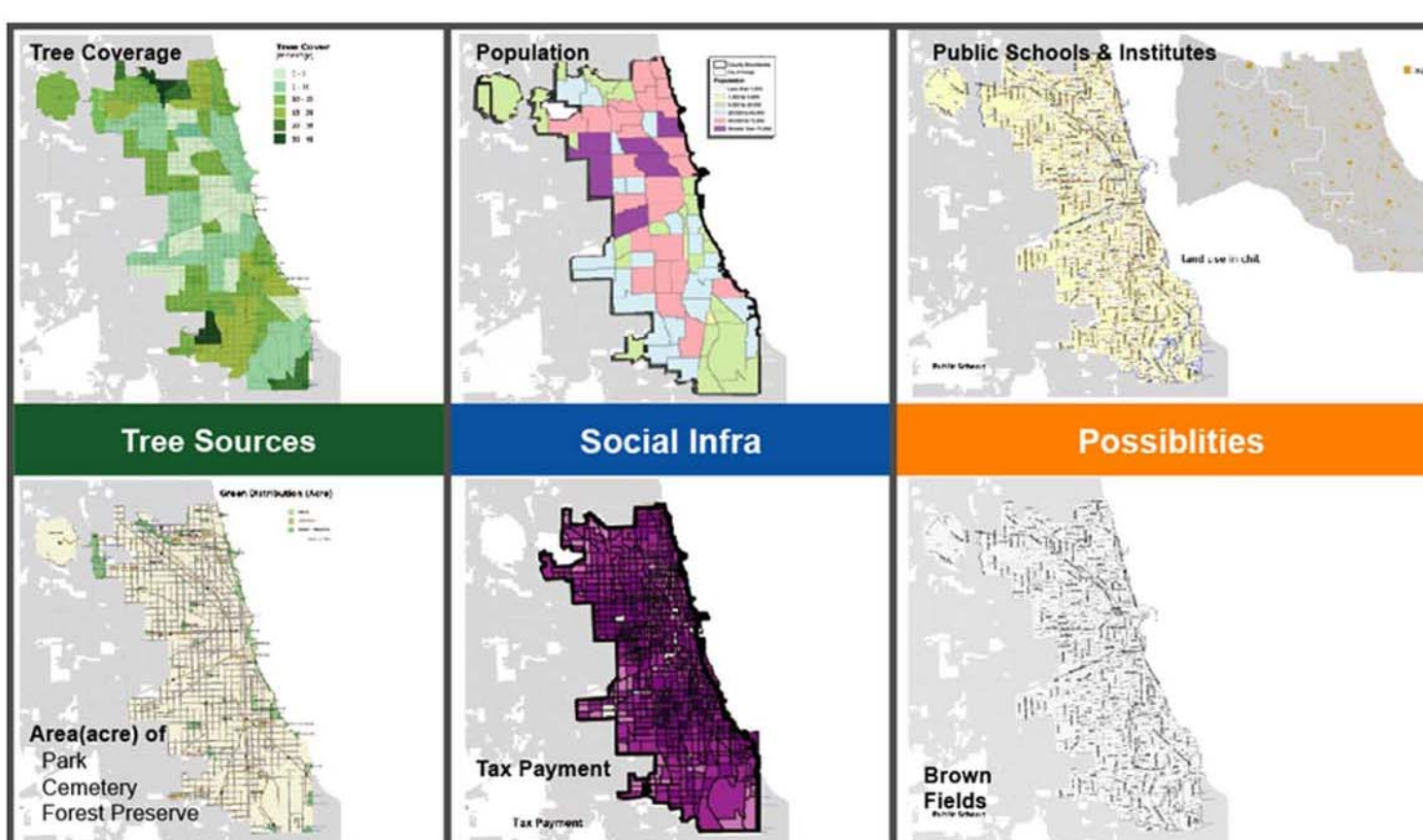
A SAWMILL OF THIS SCALE would only require square footage equal to that of a typical CHICAGO DOUBLE LOT.

### How can UrbForM impact the Entire Metropolis?



- ONE Module of Land!
- Scalability  
This system has the ability to operate at any size and any place!
- City Operations savings  
\$1,170,000.00 of salary savings annually.
- Franchise Value  
\$385,000.00 selling price for one franchise module.

### Map Research



### Module Description

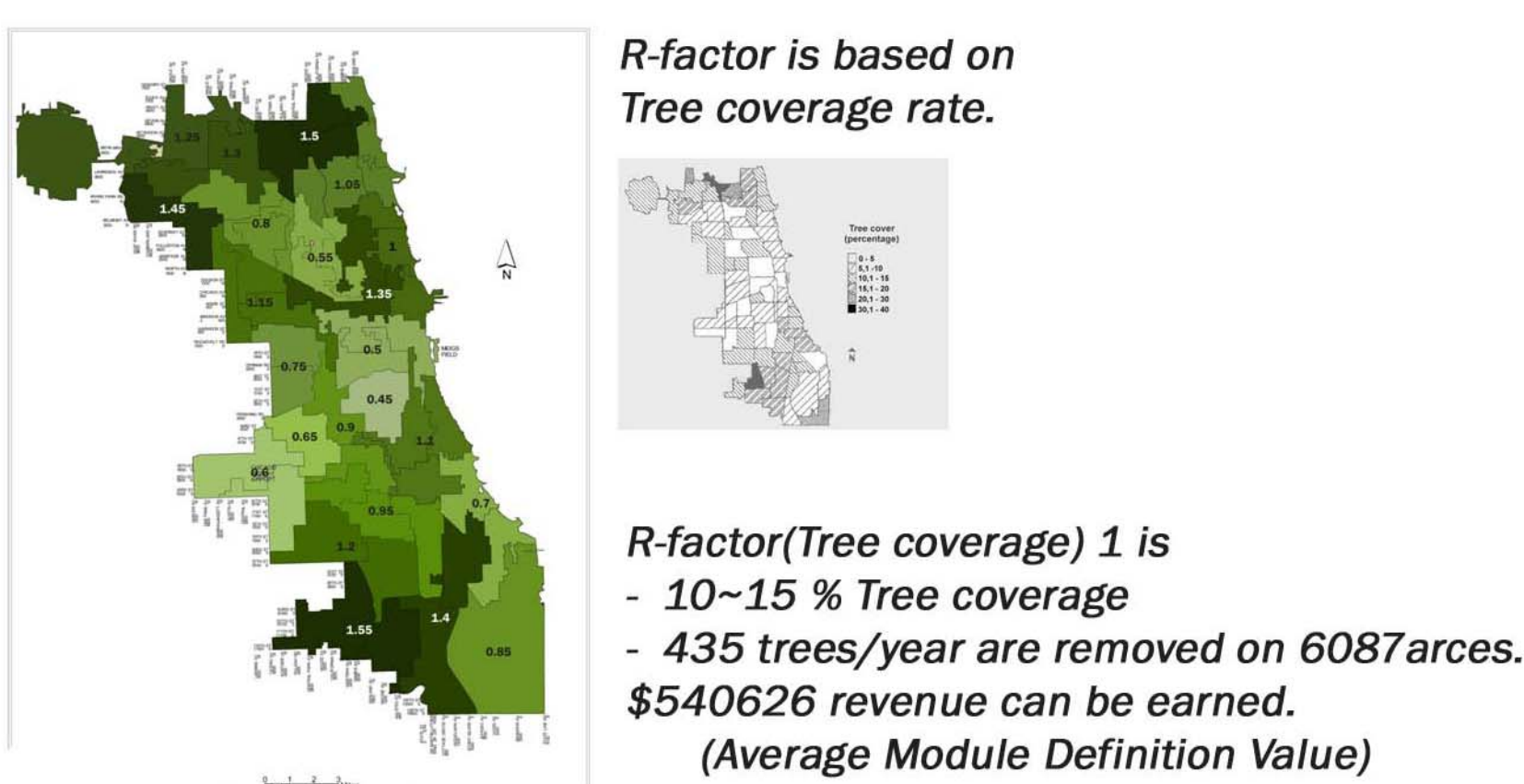
What's Wrong with the current operations



### Sample Development I



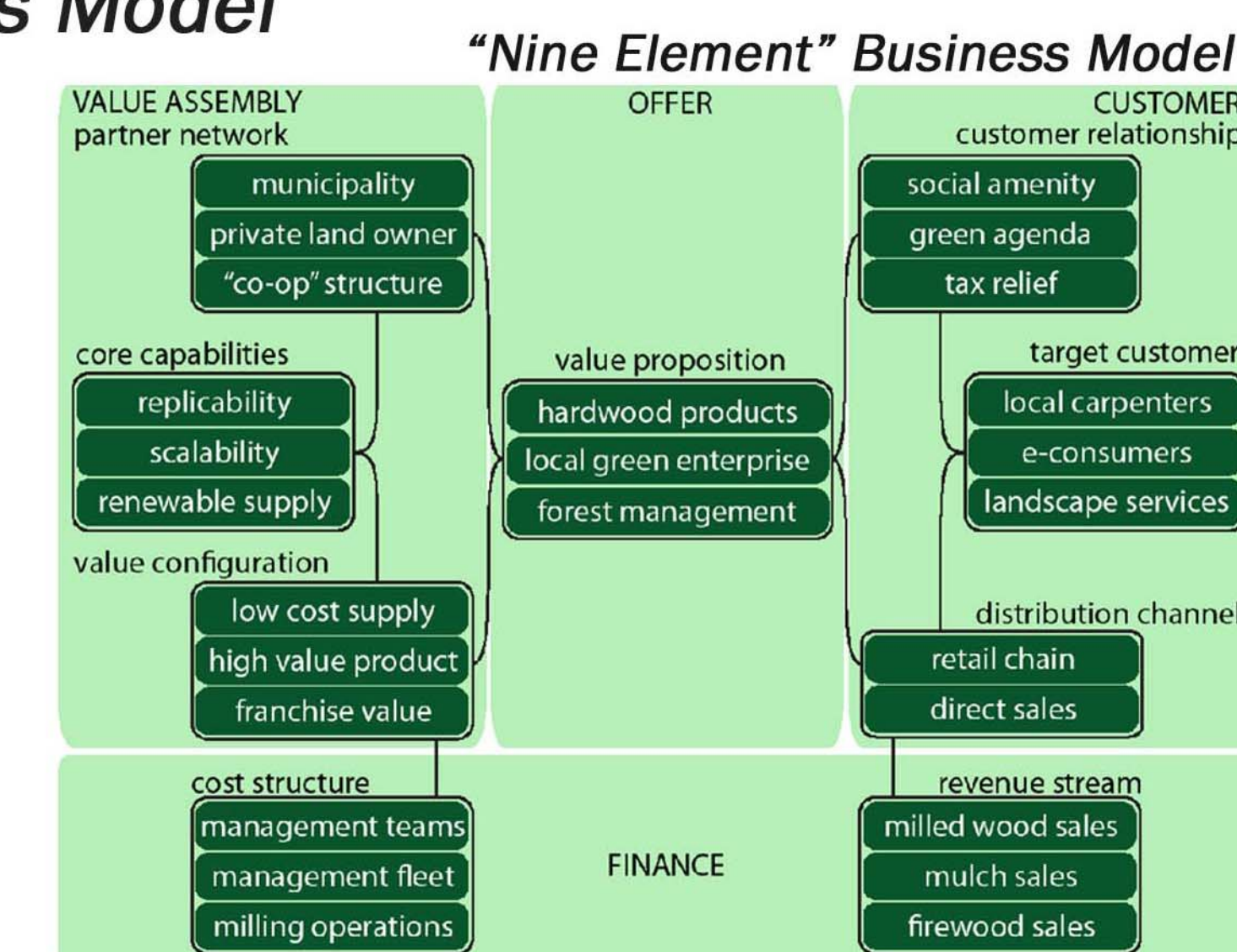
### R-Factor



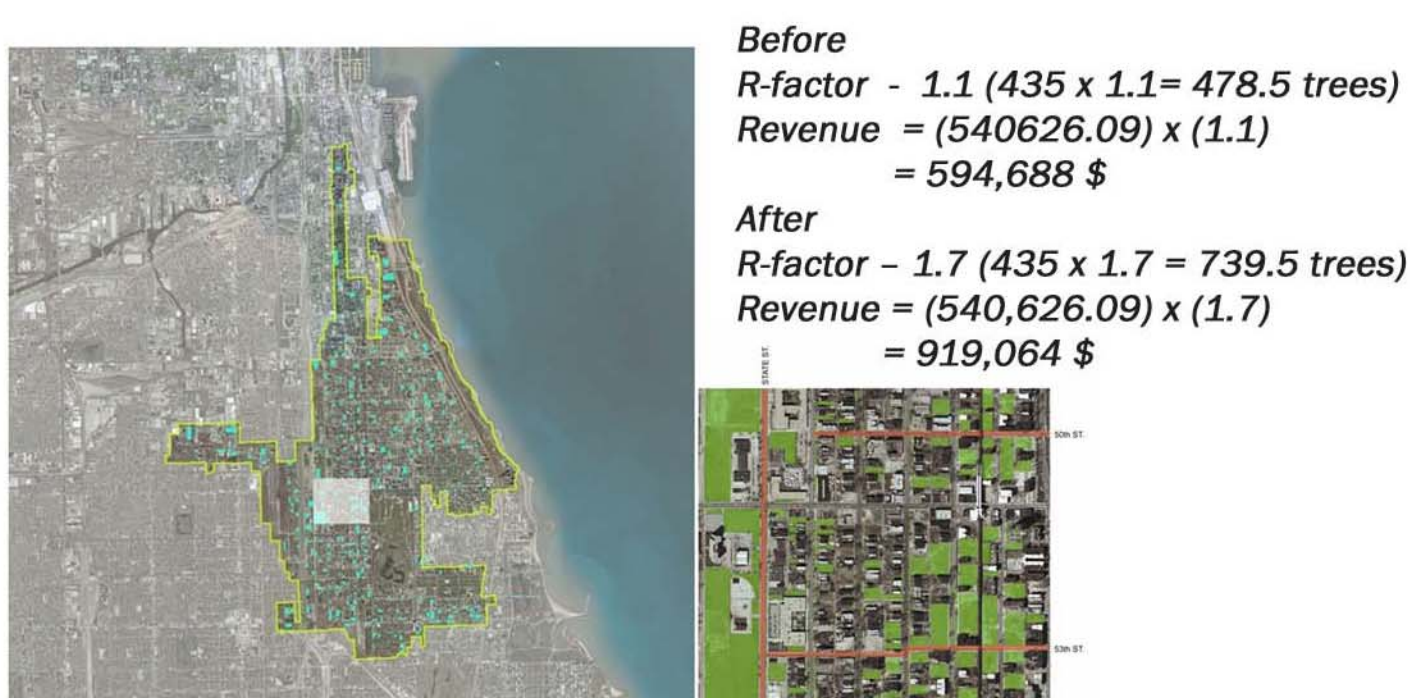
### What are current Operations



### Business Model



### Sample Development



### What is the potential



\$12,436,200 of Potential Profit each year through sawn wood, firewood, and chips/mulch. City currently makes \$176,000 each year