



GREEN BUILDING

I PRO 335

Mission Statement

- The team has a mission of sustainable design.
- The task is to integrate multiple energy-saving MEP systems into a high performance and visually compelling structure.

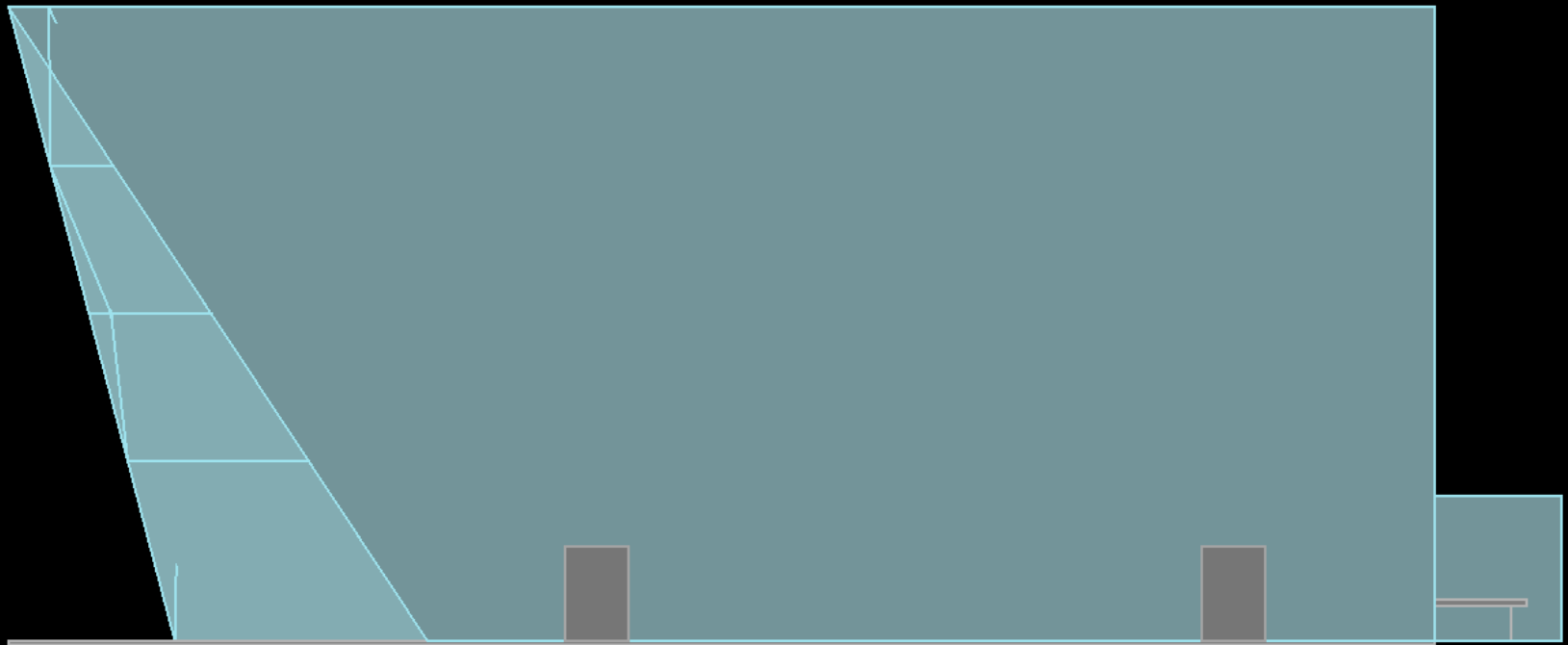
Team Divisions

- Architectural Design
- Building Envelope
- Plumbing System
- Electrical System/Solar Panels
- Geothermal/HVAC System Design
- Landscaping/Green Roof
- Fire Protection System
- Cost Estimating/Scheduling
- Energy Modeling

Team Objectives

- Choose optimal materials
- Efficient Climate Control
- Roof Layout
- Implementing the solar panels to electrical system
- Design a resourceful water system

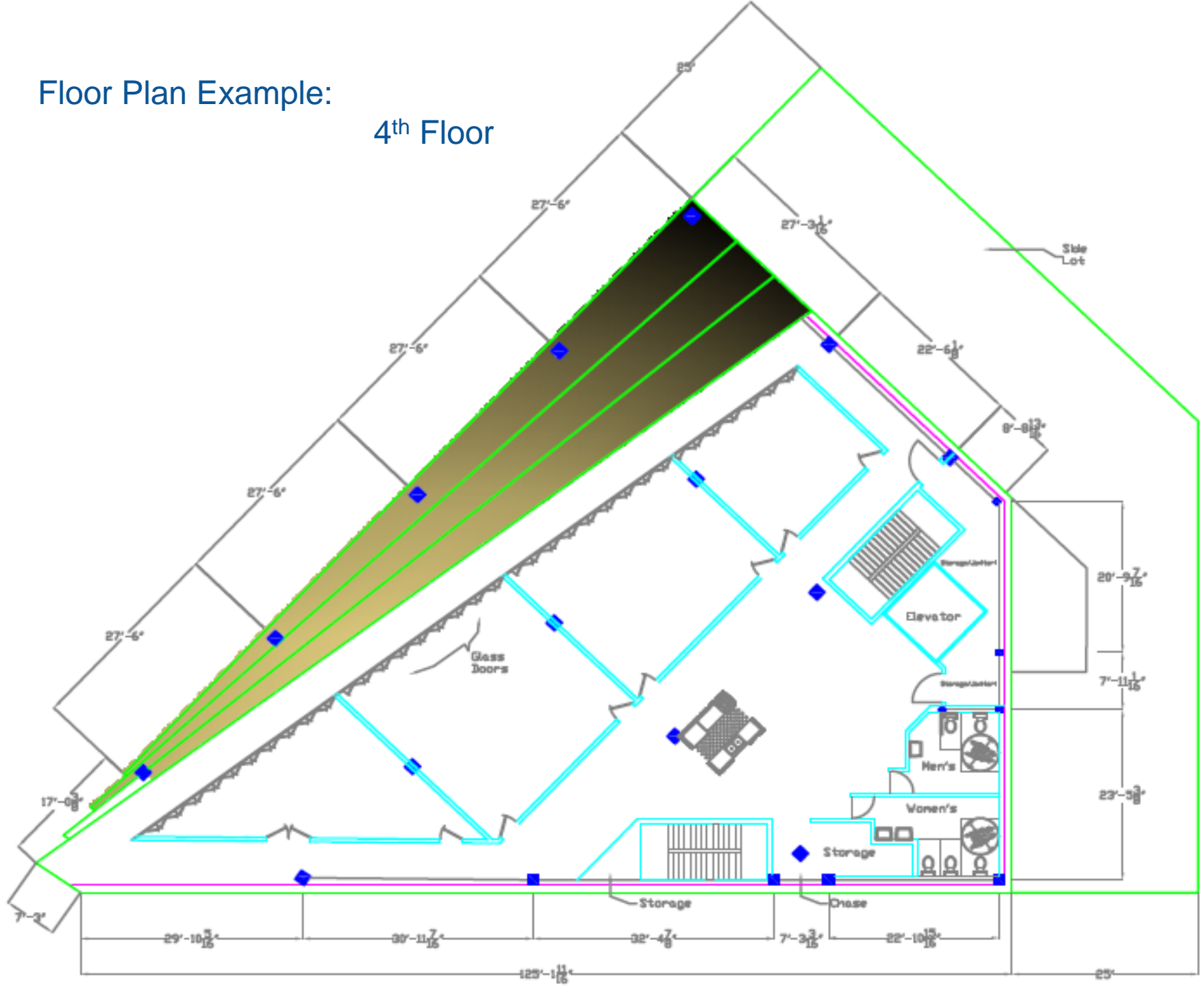
Progress



z
x

Floor Plan Example:

4th Floor



Obstacles

- Creating the most efficient integrated design
- Choosing the optimum solar panel system
- Overcoming time constraints
- Coordinating diverse team interests and objectives
- Scheduling and anticipating future requirements between teams

Anticipated Challenges

- Analysis of proposed designs
- Integrating systems with architecture
- Energy modeling
- Accepting the realities of infinite constraints