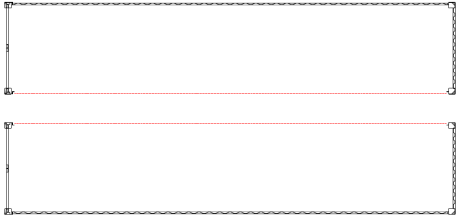
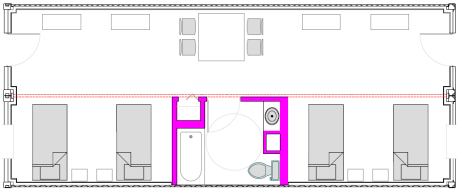


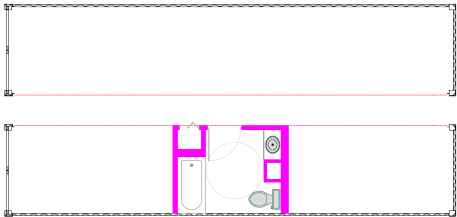
Step 1:  
Two 40' steel  
shipping con-  
tainers



Step 2:  
One side  
removed  
from each  
container



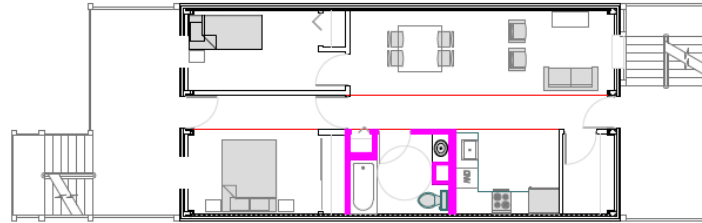
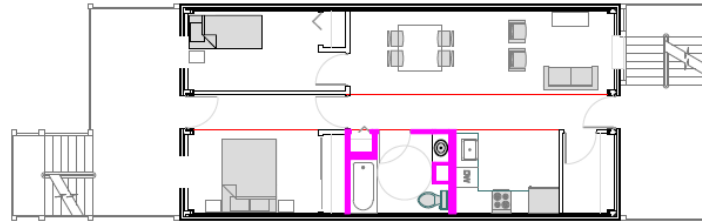
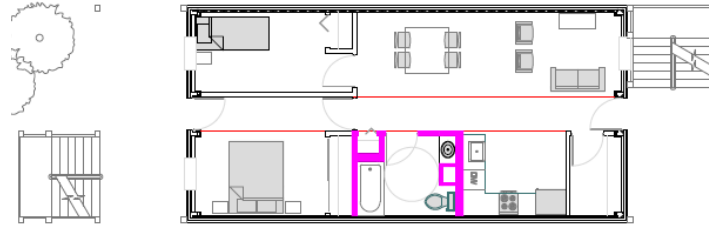
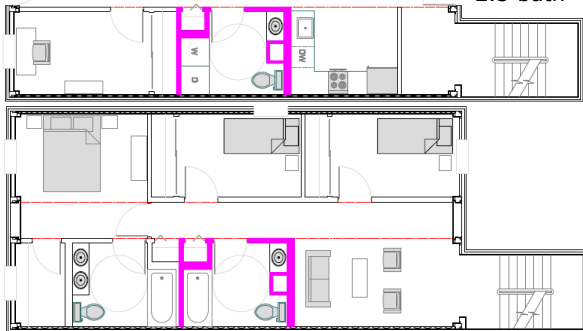
Step 3:  
Olympic Unit,  
houses four  
athletes



Step 4:  
Disassembled  
for transport;  
bathroom  
remains



Step 5a:  
Two-story,  
single family  
home; 3 bed,  
2.5 bath



Step 5b: Three-story, multi family home; 2 bed, 1 bath each

**I PRO** It takes a team!  
INTERPROFESSIONAL  
PROJECTS PROGRAM



**IPRO 339**

## Adapting Shipping Containers to Create Affordable Housing



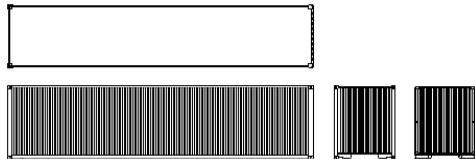
**I PRO** It takes a team!  
INTERPROFESSIONAL  
PROJECTS PROGRAM

From Shipping Containers...

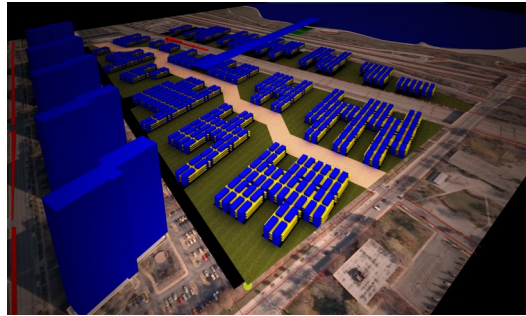


**GOAL:** convert used steel shipping containers into affordable housing.

**SEMESTER OBJECTIVE:** propose a design for the 2016 Olympic Village which needs to house 17,000 athletes and successfully converting the housing into affordable single family housing after the Olympics.



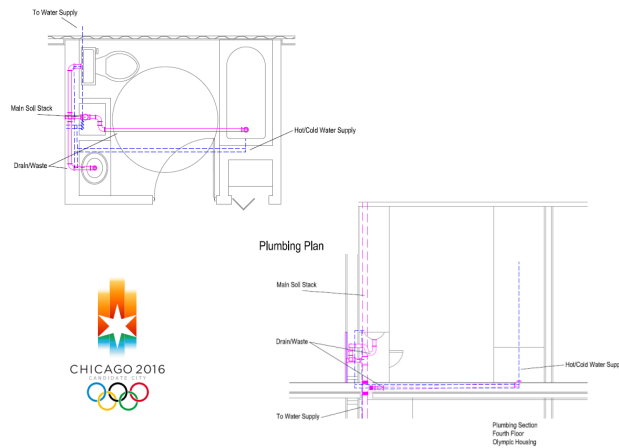
...to an Olympic Village...



**OBSTACLES:**

- The need to house 17,000 athletes in a limited space
- Transition between Olympic housing to single family housing
  - Plumbing
  - Room layout
  - Accessibility
  - Façade

Avoid past problems of social housing (e.g. blight on the neighborhood)



...to Affordable Housing for Chicago.



**ACCOMPLISHMENTS:**

- Designed a master plan of Olympic Village, using low-rise buildings, with access to the lake front.
- Improved the transition between Olympic housing and permanent affordable housing.
  - Solved plumbing issues
  - Ability to blend in on a Chicago lot

