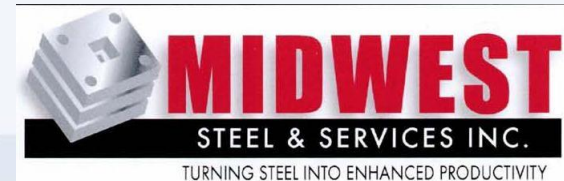


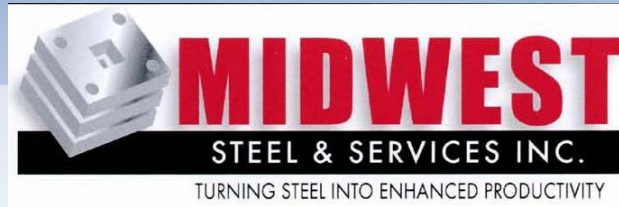
# IPRO 342

Second Semester

Developing a Real Time Information System

Advisor: William Maurer





- Purchases and converts plate steel commodities into mold and die bases specialties for the plastic and steel industries.
- Market Niche
  - Fast Turn Around Time -Ability to deliver finished product within 6-7 days.



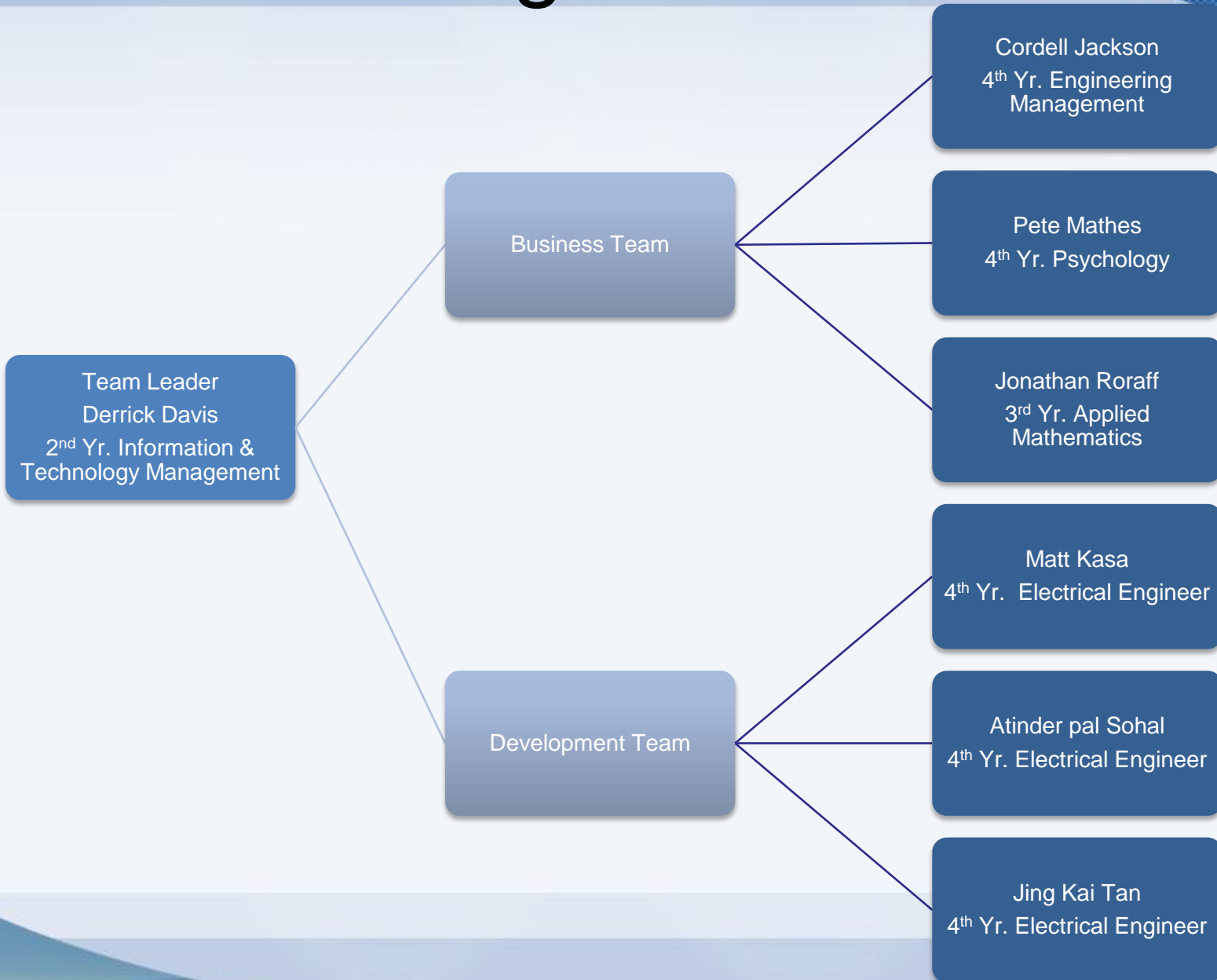
# Magnitude of Problem

- Multiple Software Platforms
  - Microsoft Access 
  - Microsoft Excel 
  - Exact JobBOSS
- Real Time Access to Inventory
- Generating Inventory and Usage Reports

# Team Challenges/Obstacles

- Obtaining the previous semester's framework
  - Configuring the application to work with our development team members' computers
- Knowledge of ASP.net and C# (C-Sharp)
- Midwest Steel's Availability
- Getting the team on the same page

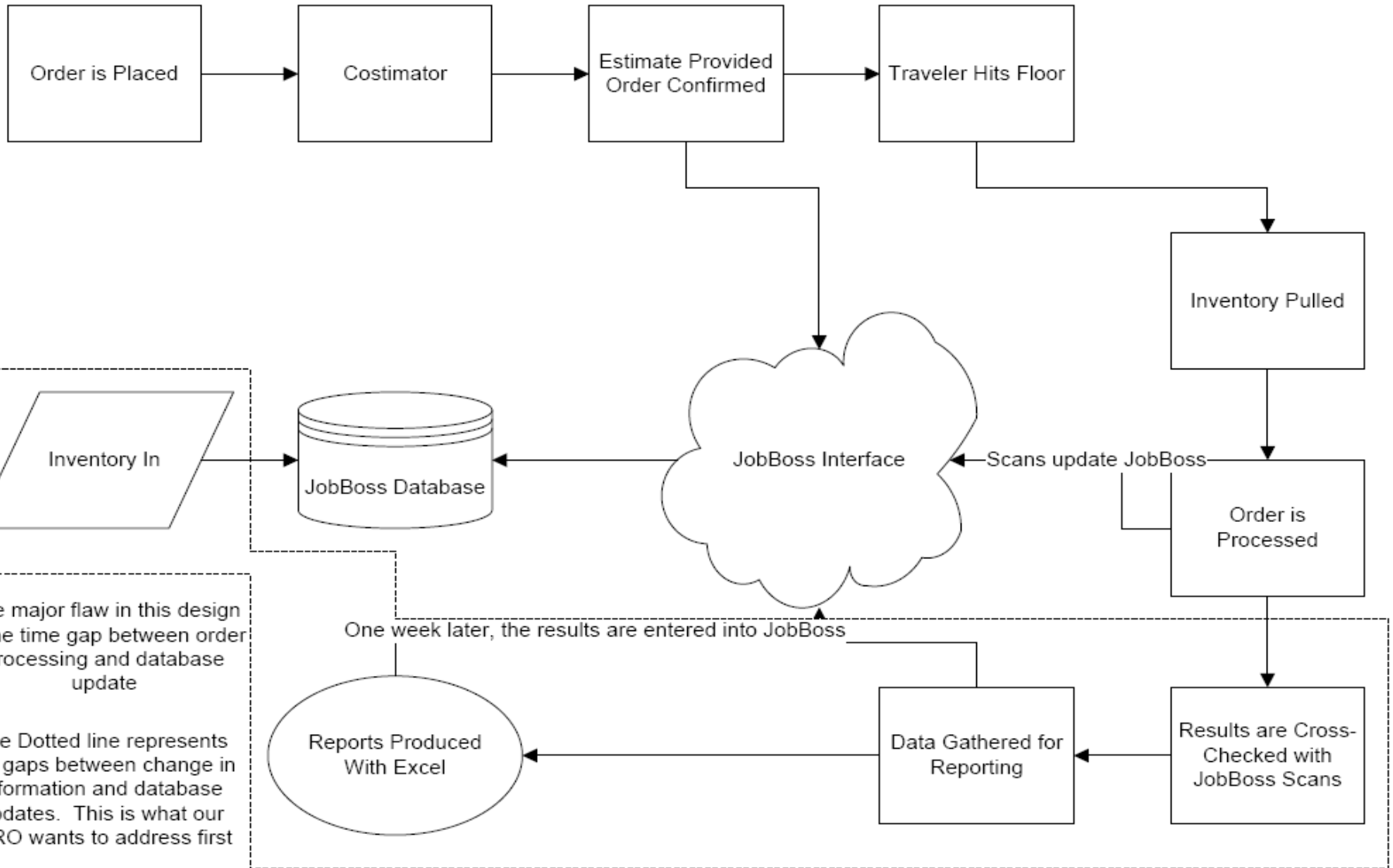
# Organization



# Business Team Objectives

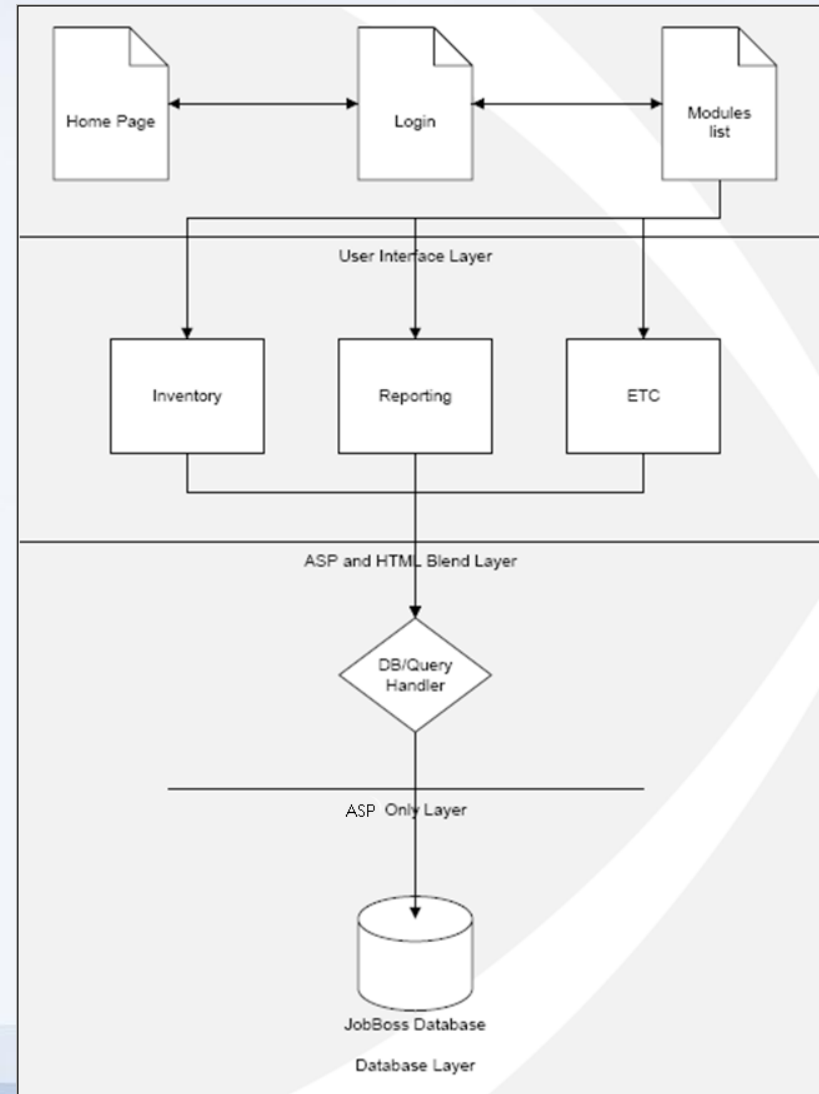
- Evaluate Order Process Flow
  - How are requested quotes received and produced?
  - After client places order, how are those orders fulfilled and tracked?
- Analyze inventory reports
  - How is inventory currently tracked?
- Design system user interface

# Current Process Flow



# Development Team Objectives

- Implement the process flow into a web application
- 'provide a monthly inventory and usage report' - Paul Santos | Controller Midwest Steel & Services





# Learning, Testing, and Implementing

- Consultation
  - Industry Professionals
  - ITM faculty and graduate student
- Web application
  - ASP.net and C# (C-Sharp)
  - Inventory Functions – view & add
  - Reports – usage
  - Estimation Capability\*
  - Job Data adjusting\*

# Web Application - Home

Midwest Steel & Services Intranet



[Home](#) [Inventory](#) [Reports](#)

[Welcome](#) [Login](#)

Last refresh: 10:47:26 AM

Log In

User Name:

Password:

Support Information

[Trouble logging in](#)

[here's help ++](#)

[Which browsers are supported](#)

[here's help ++](#)

[FAQ's](#)

[Frequently Aske Questions ++](#)



## Who, Where, What...

Midwest Steel & Services, Inc. is a metal service and processing center serving the plastic injection mold building and metal stamping industries. We specifically serve mold builders, mold base builders and stamping die producers. "Turning Steel into Enhanced Productivity" is more than our slogan; it's our way of doing business. With our convenient in-house processing, we provide quick turnaround, saving our customers time and money while helping them focus on their core

# Web Application - Inventory

Midwest Steel & Services Intranet

## Bar Display

Select Grade:

4130 PH

Enter actual thickness of bar:

.625

Enter bar width:

75

Enter bar length:

90

Enter bar location:

FLOOR

Enter producing mill name:

IIPRO342

Enter cost per cwt:

34.78

Enter heat number:

IITIPRO342

Enter supplying vendor:

IIPRO342CLASS

Enter PO#:

342

Post Item

Update Item

Delete Item

Reset

# Web Application - Reports

Reports



Announcements here

Home Inventory **Reports**

Welcome Last refresh: 11:03:42 AM

Start Date   
End Date

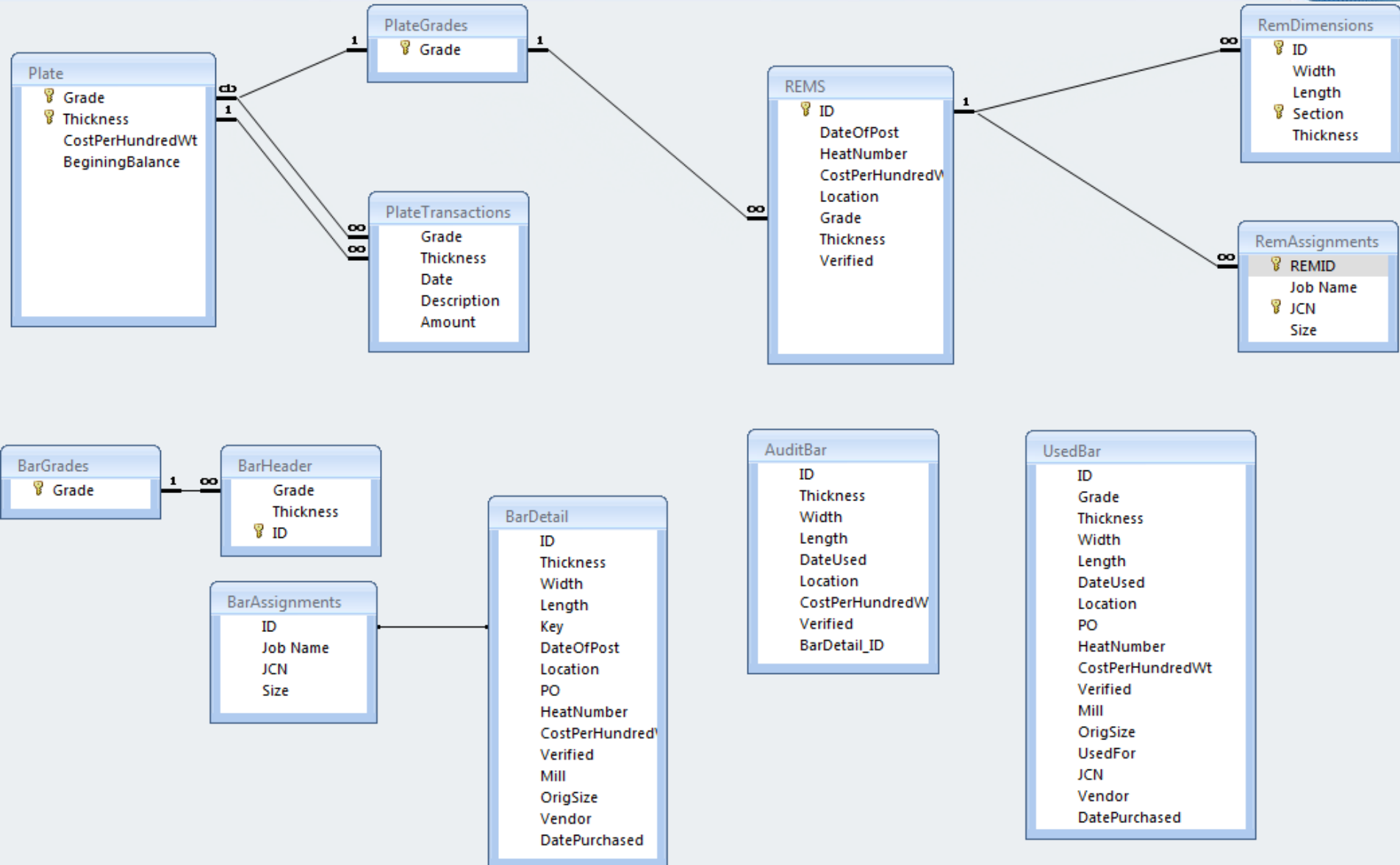
Total Value   
Total Weight

Grade	Thickness	Width	Length	CostPerHundredWt	Weight	Value
A-36	0.625	1.75	46	55.30374	14.26913	7.891362
A-36	0.625	1.75	46	55.30374	14.26913	7.891362
A-36	0.625	1.75	46	55.30374	14.26913	7.891362
A-36	0.625	2.5	29.875	55.30374	13.23883	7.321566
A-36	0.625	2.5	29.875	55.30374	13.23883	7.321566
A-36	0.625	2.5	29.875	55.30374	13.23883	7.321566
A-36	0.625	3.5	34	55.30374	21.09349	11.66549
A-36	0.625	3.5	34	55.30374	21.09349	11.66549
A-36	0.625	3.5	34	55.30374	21.09349	11.66549
A-36	0.625	3.75	14.25	55.30374	9.472131	5.238443
A-36	0.625	3.75	14.25	55.30374	9.472131	5.238443
A-36	0.625	3.75	14.25	55.30374	9.472131	5.238443

# Future Objectives

- Database Redesign
  - Create separate tables for each type of steel category
  - Create Unique ID's for each inventory item
- Web Application
  - Implement 'edit and delete record features to Inventory module'
  - Implement 'Crystal Report' feature to Reports module
  - Integrate with JobBoss
- Update Flow Chart

# Database Structure



# Acknowledgments

- Valerie Scarlata - ITM Professor
- Maharshi Dave - ITM Graduate Student
- William Maurer - Advisor, INTM Professor
- Midwest Steel & Services, Inc. - Sponsor
  - Paul Santos, Controller
  - Mike Murtha, Purchasing Manager

