



## simplifying the PROBLEM

### Organization

#### DEVELOPMENT TEAM

- DERRICK DAVIS
- CORDELL JACKSON
- PETER MATHES
- JONATHAN RORAFF

#### PROGRAMMING TEAM

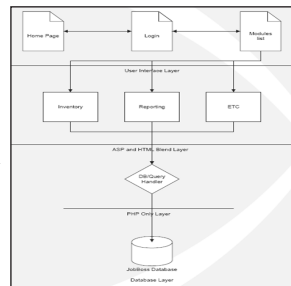
- ANTINDER SOHAL
- MATTHEW KASA
- KEVIN TAN

Currently, our sponsor does not have a system allowing for reliable information tracking. The goal of this IPRO is to develop a real time information system for our sponsor, Midwest Steel and Services, so that the issues they currently face might be resolved.

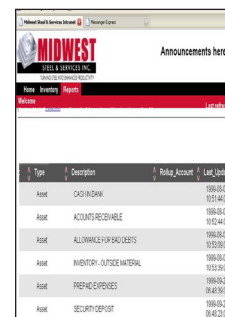
### Results

Vulputate iaceo, volutpat eum mara ut accumsan nutus. Aliquip exputo abluo, aliquam suscipit euismod te tristique volutpat immitto voco. Torqueo, qui lorem ipso utinam immitto vero sino. Appellatio, rusticus decet amet facilisis feugait typicus abbas ut valde. Ymo adipiscing pertineo adipiscing vindico metuo consetetuer. Nisl nulla tego loquor eligo vel praemitto nobis.

Uxor iaceo at minim letatio lenis esca abluo. Sed sed dolore esca similis vel esse iriure, lenis utinam adsum indoles, esca. Cui appellatio facilisi, aliquip capto vel regula gemino luptatum singularis vero, elit, cui, suscipit. Nimis nisl eros ulciscor volutpat vel. Ullamcorper in ille consequat, quis, jugis dolore tego venio similis tincidunt abluo capio. Jus, at eu acsi, abbas letatio ut eum odi.



This is a flow chart depicting last semester's design for a solution which helped shape our initial direction



Type	Description	Relay_Account	Last_Updated
Asset	CASH IN BANK	1936-08-02	19:21:44:000
Asset	ACCOUNT RECEIVABLE	1936-08-02	19:52:44:000
Asset	ALLOWANCE FOR SALES DEDUPTS	1936-08-02	19:53:00:000
Asset	INVENTORY - OUTSIDE WAREHOUSE	1936-08-02	19:53:30:000
Asset	PREPAID EXPENSES	1936-08-02	19:43:16:000
Asset	SECURITY DEPOSIT	1936-08-25	08:47:21:000

This is an image of the user login screen our IPRO produced

### Background

The employer for this project Midwest Steel and Services, Inc, operates out of Wheeling, IL. They provide specialized steel services and offer a fast turnaround time. A real time information system would provide them with a more efficient means to conduct business, track inventory and process orders. Currently, the company relies on a substantial amount of unnecessary manual work.

### Recommendations

Our team came up with several proposals to adjust the database used by the employer:

- Creating Unique IDs for each inventory item
- Integrating our Web application with JobBoss
- Adjusting database descriptions to help inventory tracking

### Obstacles

Previous semester's work difficult to find  
Evaluating the status of previous IPRO's accomplishments  
Availability of employer was minimal due to a company merger

