



GREEN LINK

I PRO 338

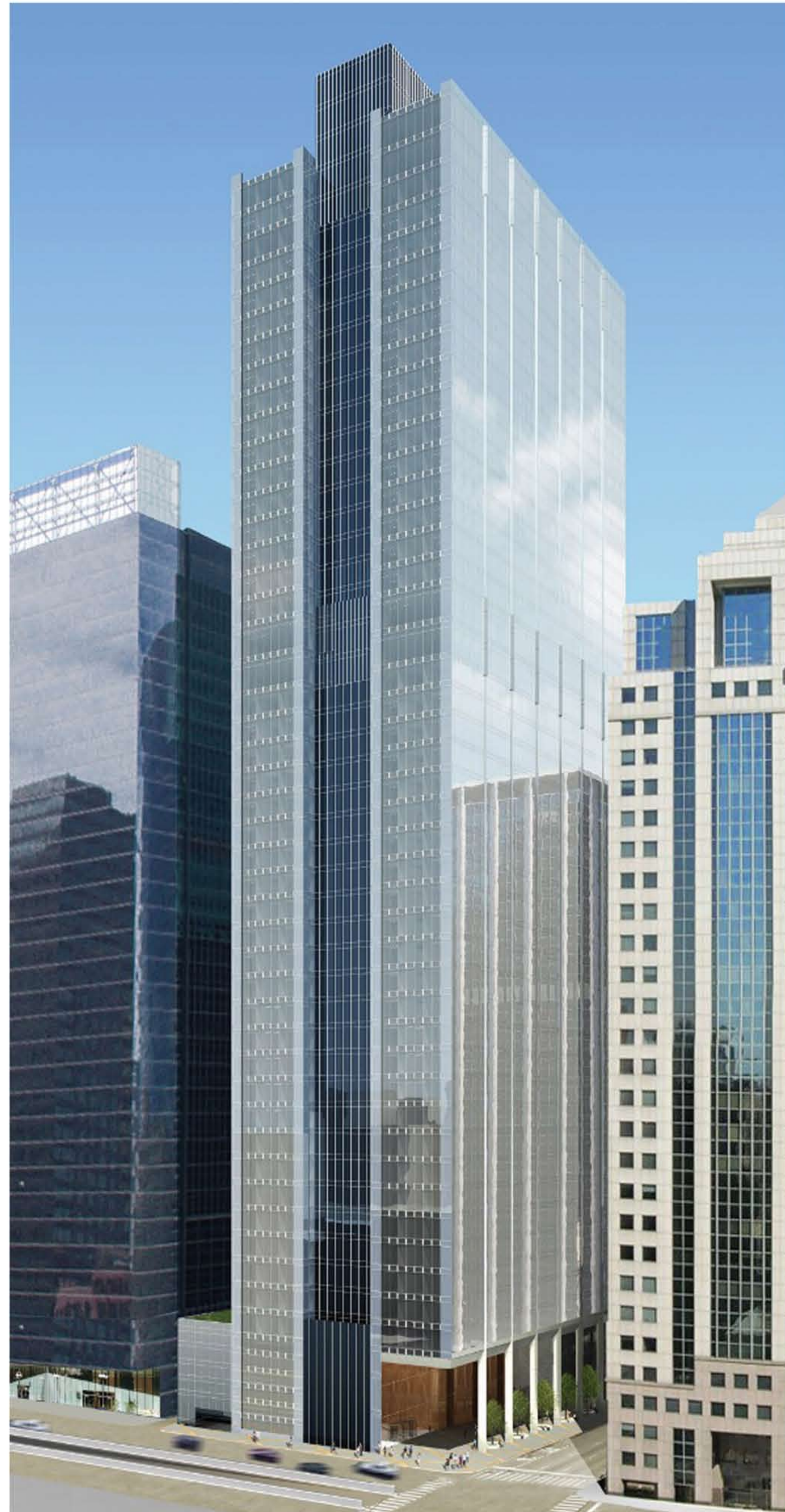
Green Technology in Electrical Construction

Sponsored by: Electrical Contractors' Association of City of Chicago, Inc.



||||| SITE VISIT 155 N WACKER |||||

||||| CONCLUSION |||||

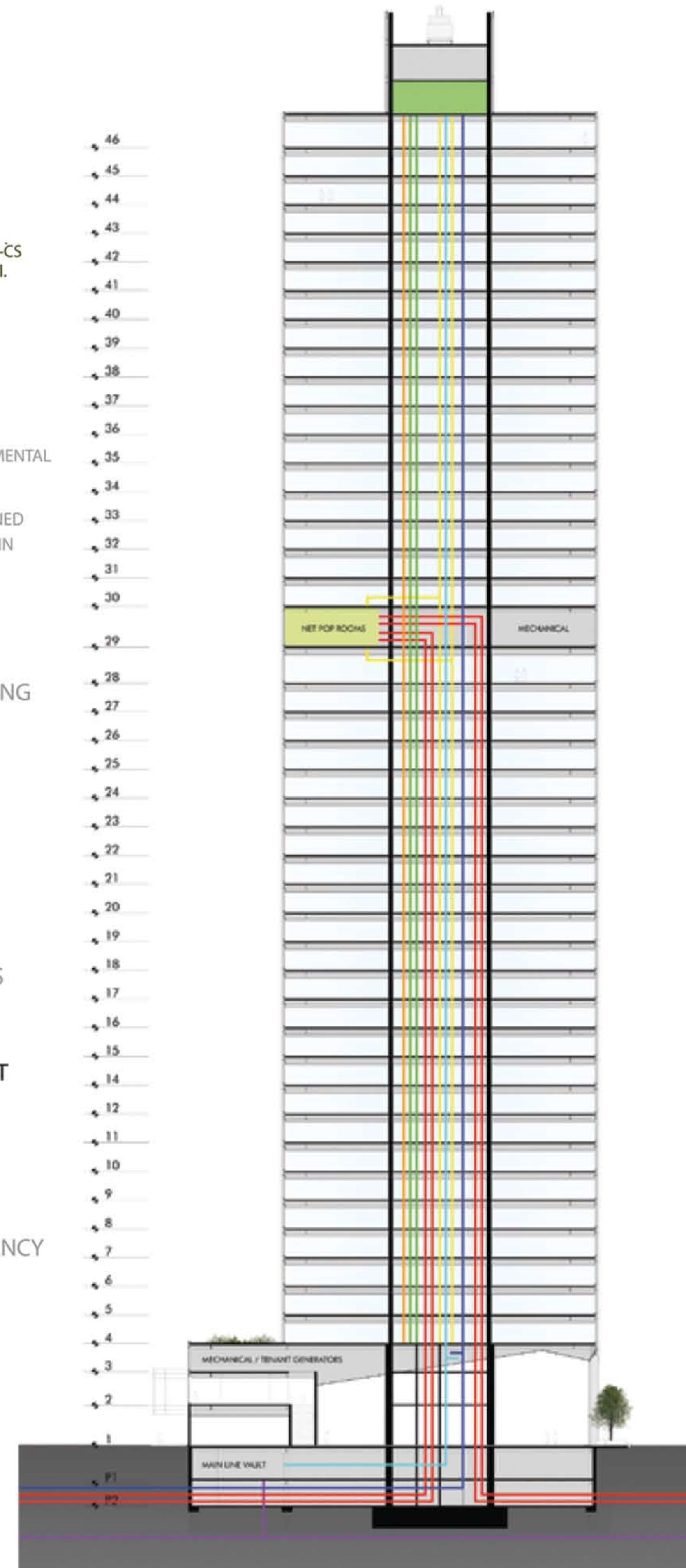


This project has been pre-certified as LEED-CS Silver by the U.S. Green Building Council.

LEED ("LEADERSHIP IN ENERGY AND ENVIRONMENTAL DESIGN") IS A PROGRAM CREATED BY THE UNITED STATES GREEN BUILDING COUNCIL TO PROVIDE AN OBJECTIVE SYSTEM FOR MEASURING OR RATING THE ENVIRONMENTAL SUSTAINABILITY OF BUILDINGS.

155 NORTH WACKER DRIVE WAS DESIGNED TO SATISFY THE LEED® REQUIREMENTS IN THE FOLLOWING CATEGORIES:

- ◆ IMPROVED AIR QUALITY LEADING TO HEALTHY ENVIRONMENT AND REDUCING EMPLOYEE ABSENTEEISM
- ◆ SUSTAINABLE SITE
- ◆ WATER EFFICIENCY
- ◆ ENERGY AND ATMOSPHERE
- ◆ MATERIALS AND RESOURCES
- OPERATIONS ENHANCEMENT
- ◆ BACKBONE FOR ENHANCED BLACKBERRY AND CELL PHONE USE
- ◆ INFRASTRUCTURE REDUNDANCY FOR ELECTRICAL POWER, VOICE/DATA & HVAC, REDUCING THE RISK OF BUSINESS INTERRUPTIONS



TECHNOLOGY PROFILE

- ◆ VOICE/DATA RISERS FOR COPPER AND FIBER OPTICS SIZED FOR A MINIMUM OF EIGHT (8) CARRIERS WITH TWO (2) REDUNDANT FEEDS
- ◆ POWER SERVICE FROM TWO (2) SEPARATE SUBSTATIONS
- ◆ ROOF-TOP TECHNOLOGY PLATFORM/PATHWAY
- ◆ TWO (2) OVERSIZED BUILDING VOICE/DATA DISTRIBUTION RISERS WITH TWO (2) VOICE/DATA CLOSETS PER FLOOR
- ◆ 12 KVA RISER TO COM-ED VAULTS SERVING EACH OFFICE FLOOR
- ◆ PATHWAYS FOR TENANT BACK-UP POWER
- ◆ DISTRICT COOLING CHILLED WATER RISER

I PRO 338 made a significant progress continuing the work of the two previous semesters. We successfully completed a website and database for electrical contractors, which was turn-over and approved by our sponsor.

Green Link

Home Find Products Manufacturers LEED Ratings Grants Research

Helping Electrical Contractors Locate LEED Point Eligible Rated Products

Welcome to Green Link, your resource for green products and information from every corner of the electrical construction world, provided by the Electrical Contractors' Association of City of Chicago. You can learn about how LEED certification affects you as an electrical contractor and what products will help you make your project green. You can become informed about this new and growing part of the building industry and get the knowledge you need to stay competitive in the marketplace.

Resources

The purpose of this website is to host a user-friendly online database of green technologies information for the Electrical Contractors Association of City of Chicago. This website provides data on green electrical products with cut sheets, pricing and distributor information, return on investment projections, and LEED certification facts. The use of this website should help create a well informed transition from industry standard electrical products, to green alternative products, as well as cut down on miscommunication between architects and electrical contractors.

Product Details

Name	LEED Credit		
T8 Rapid Start Fluorescent-PHILIPS LAMPS	EAp3		
Category	Model#	Cost	%Recycled
Lighting	F40T8/TL741/ALTO	19.82	
Description	Straight Lamps; Lamp Type - Rapid Start Fluorescent; Watts 40; Lamp Size - T8; Base - Medium Bipin; Lamp Style - TL 70; Color Temperature - 4100K; Length (in) - 60; Avg Life (hrs) - 20000; Initial Lumens - 3600 CRI - 78; Package Quantity - 25; Additional Information - ALTO Lamp		
Manufacturer	PHILIPS LAMPS	Power Usage	W
Notes	http://www.nam.lighting.philips.com/us/ Philips Electronics North America 3000 Minuteman Road, N/S 109 Andover, MA 01810		
Misc		Files	Download T8 Rapid Start Fluorescent.pdf



Home Find Products Manufacturers LEED Ratings Grants Research

Manufacturers

Click on a manufacturer's name to see more details. Click on the name, city, or state headings to sort the table.

Name	Contact	City	State	Filter by State
Cooper Lighting		Peachtree City	GA	GA
PHILIPS LAMPS		Andover	MA	MA
GE LAMPS		Chicago	IL	IL
Westinghouse Lighting				GA
EIKO		Shawnee	KS	IL
SHAT-R-SHIELD	Pete Givens	Salisbury	NC	MA
PANASONIC INC		Secaucus	NJ	NC
SYLVANIA LAMPS		Danvers	MD	KS
SATCO		New York	NY	NJ
EROSIVE MINDS		Syracuse	NY	MD
DUALITE		Williamsburg	OH	NY
LITHONIA LIGHTING		Coryers	GA	OH
LUTRON		Copersburg	PA	PA
ADVANCE TRANSFORMER		Rosemont	IL	TN
UNIVERSAL LIGHTING		Nashville	TN	OK
LEVITON	Bob Freshman	Little Neck	NY	TX
RAB		Northvale	NJ	MN
PASS & SEYMOUR		Syracuse	NY	MO
				CO