



**SLOAN.**

# Mid Term Review

## I PRO 306: Technology and Business Innovations to Improve Operations

Faculty Instructor: John Caltagirone

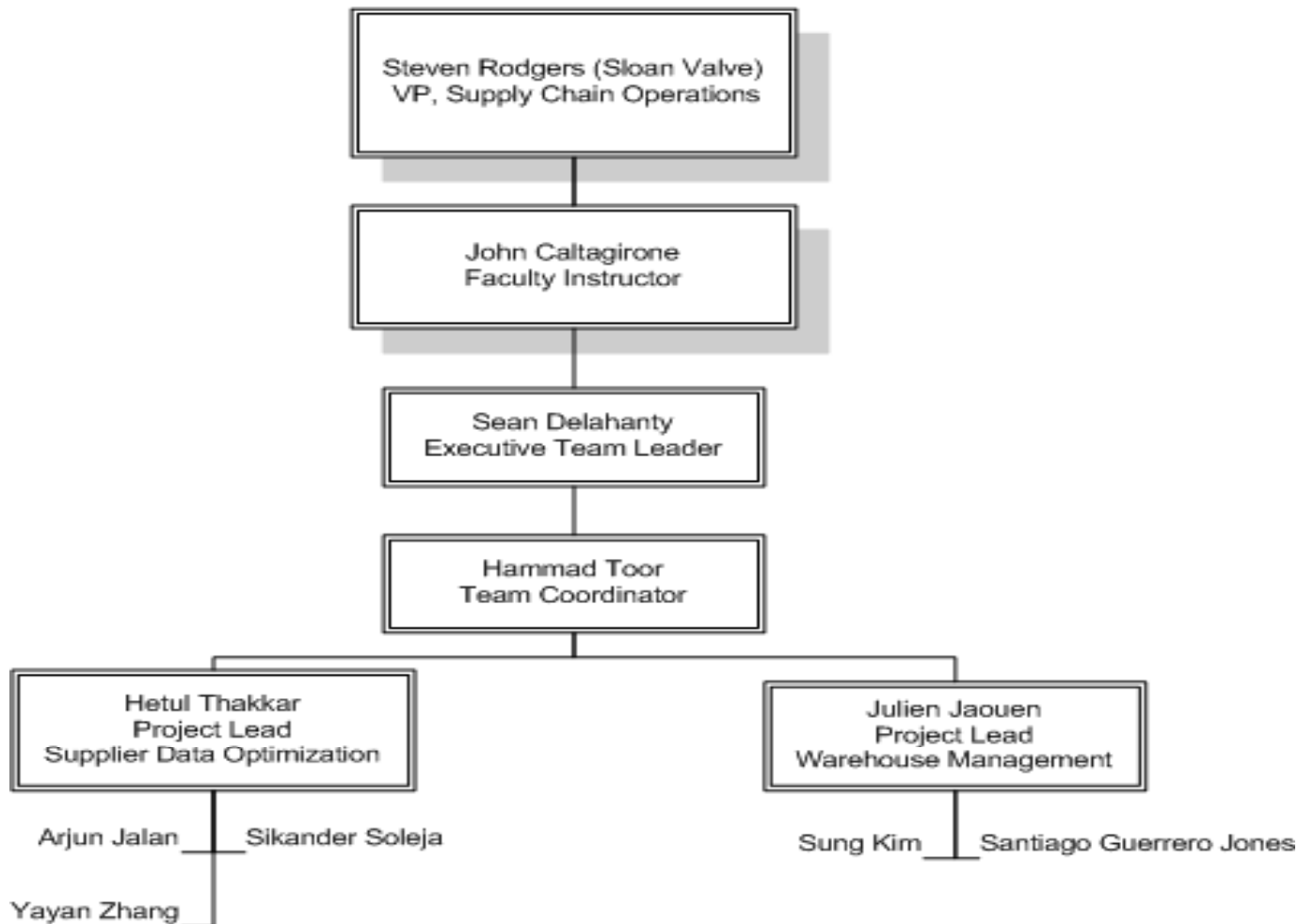
# Statement of the Problem

**Create process efficiencies through the utilization of technology.**

## HOW?

- Warehouse Improvements through the Implementation of WMS
- Optimization of Supplier Data

# Team Structure



# Warehouse Management

## Current Issues

- Changes in Company Network and Distribution Structure
- Manual Processes
- Inefficiencies Created and CS Levels Impacted

## Goals of the Project

- Increase the Organization and Performance of the Warehouse
- Establish Policies and Procedures for WM Implementation

# Warehouse Management

## Current Progress

- Re-defined ABC Classification
- Assessment of Warehouse Layout
- Advised on Material « Slotting »

## Main Obstacles

- Sloan / Technical Jargon
- Analyzing the « right » data
- Lack of Key Data

# Warehouse Management

## Challenges Ahead

- Maintain Momentum
- Build a Comfort Level within SAP WM Module
- Finish all the scheduled tasks on time
- Exceed Sloan's Expectations

# Supplier Data Optimization

## Current Issues

- A lot of inaccurate Master Supplier Data
- Procurement and production inventory shortages
- Currently there is no process to effectively manage the Supplier's Info Records

## Goals of the Project

- Eliminate procurement and production inventory shortages caused by inaccurate supplier data
- Create a process within SAP to manage and update supplier data that greatly eliminates the issues moving forward

# Supplier Data Optimization

## Current Progress

- Analyzed info records and broken down in different categories, added missing information to info records
- Eliminated duplicate info records and unwanted fields
- Validated vendor information by contacting vendors

## Main Obstacles

- Working on a large number of info records and contacting so many suppliers becomes time consuming
- To understand the terminology within SAP



# Supplier Data Optimization

## Challenges Ahead

- Input the data into the SAP system
- Create a process within SAP to effectively manage and update info records on regular schedule

**Thank You!**

**Questions?**