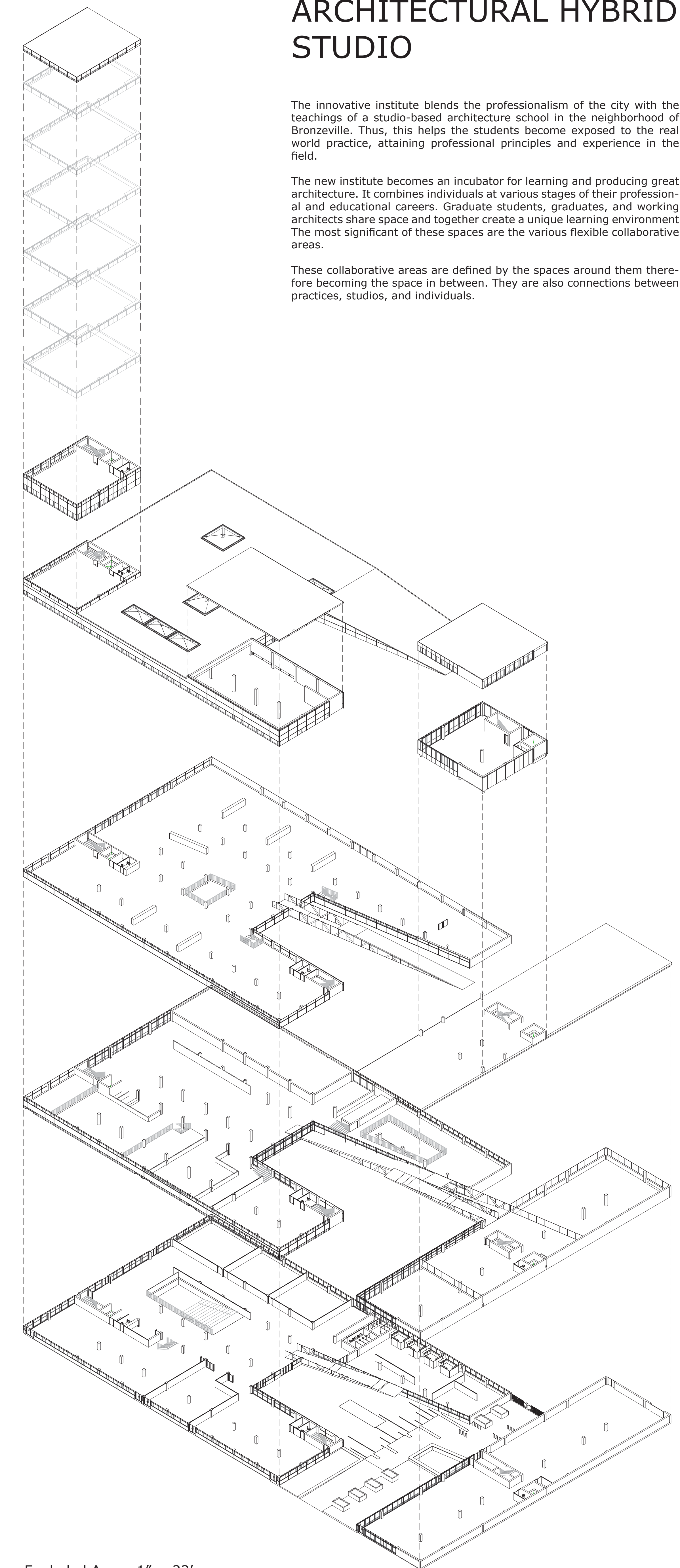
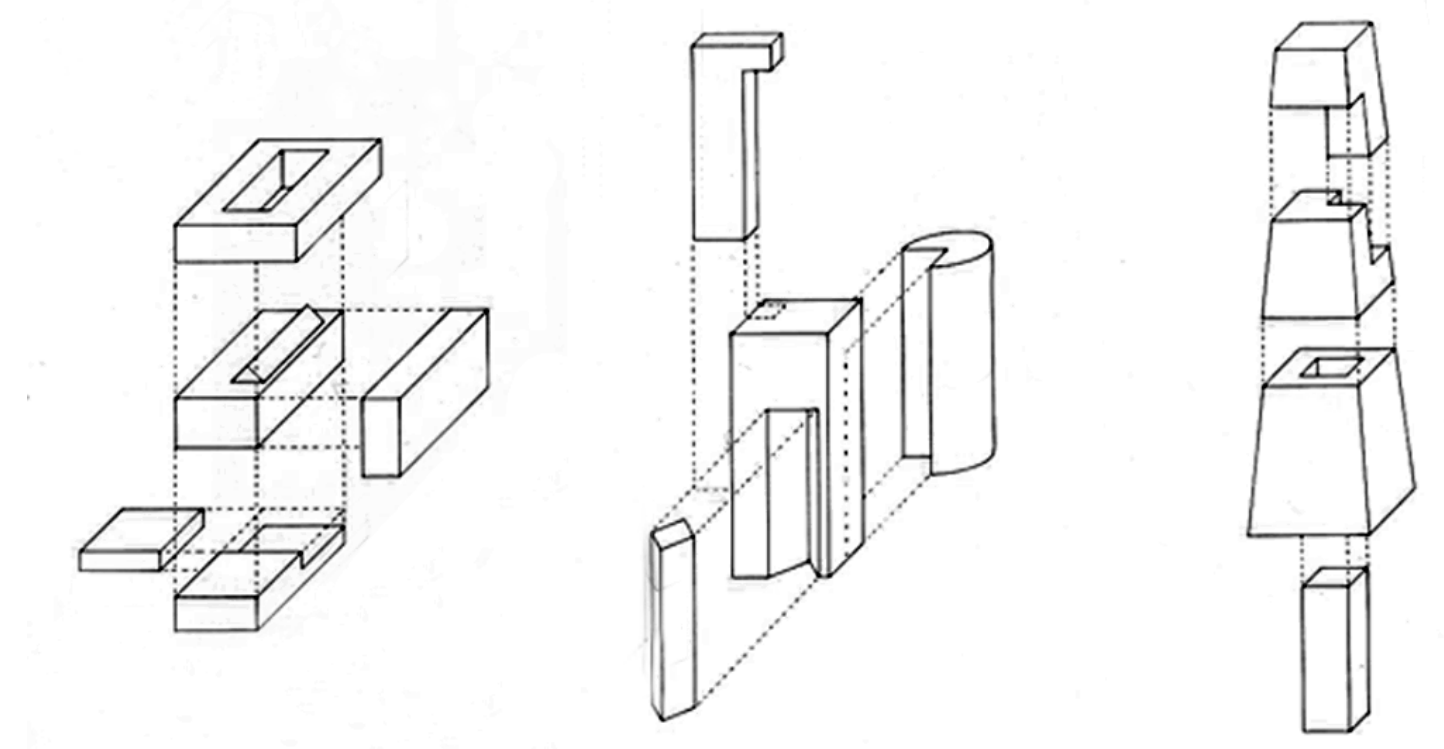
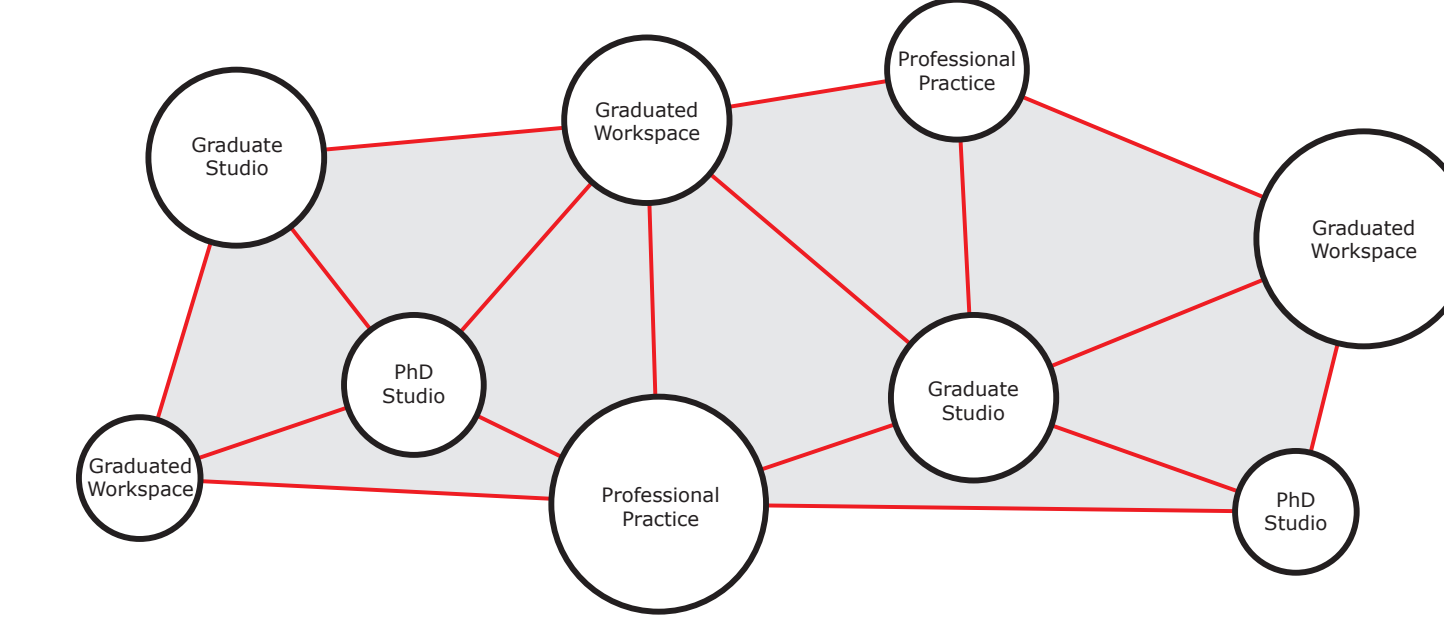
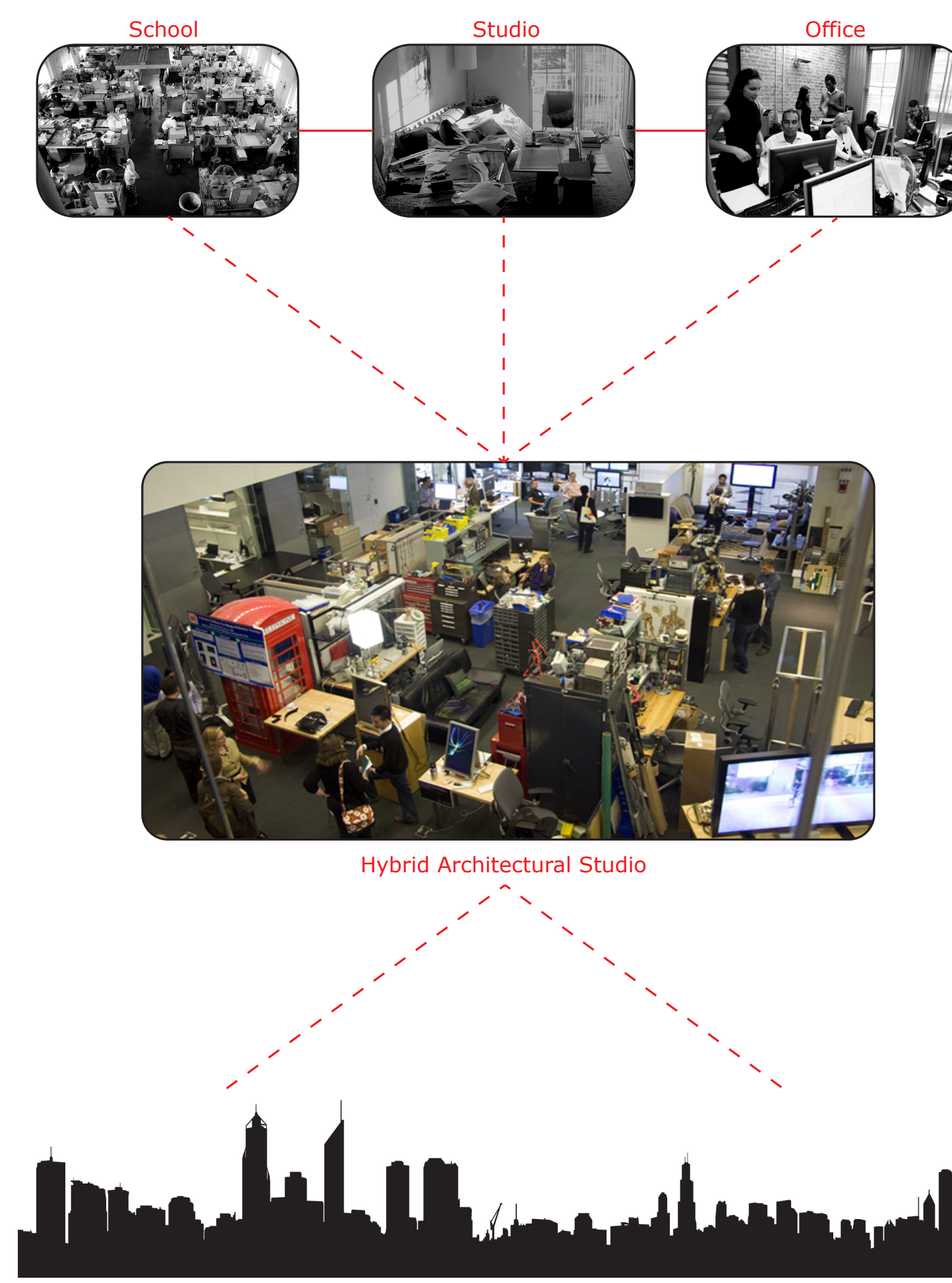
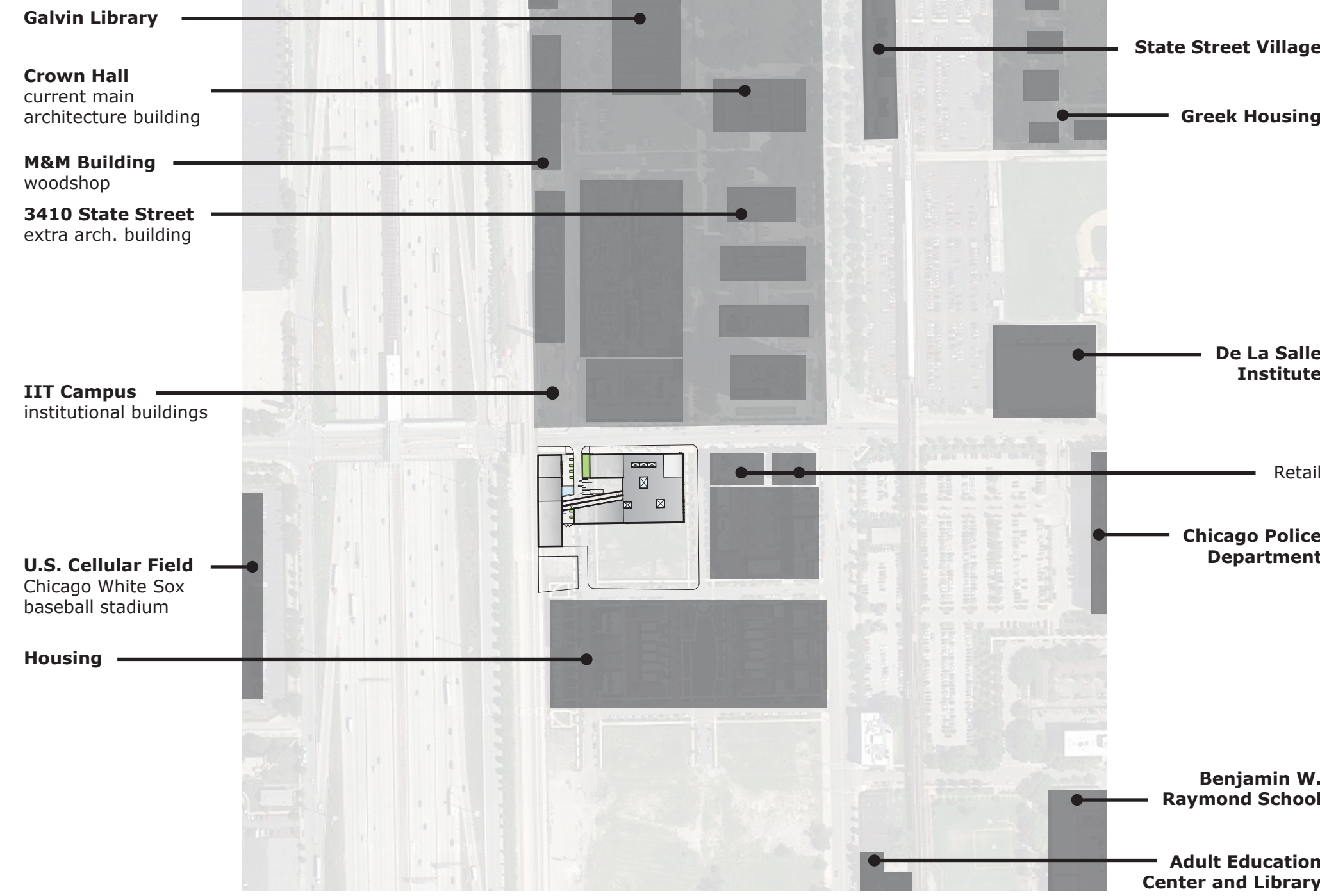
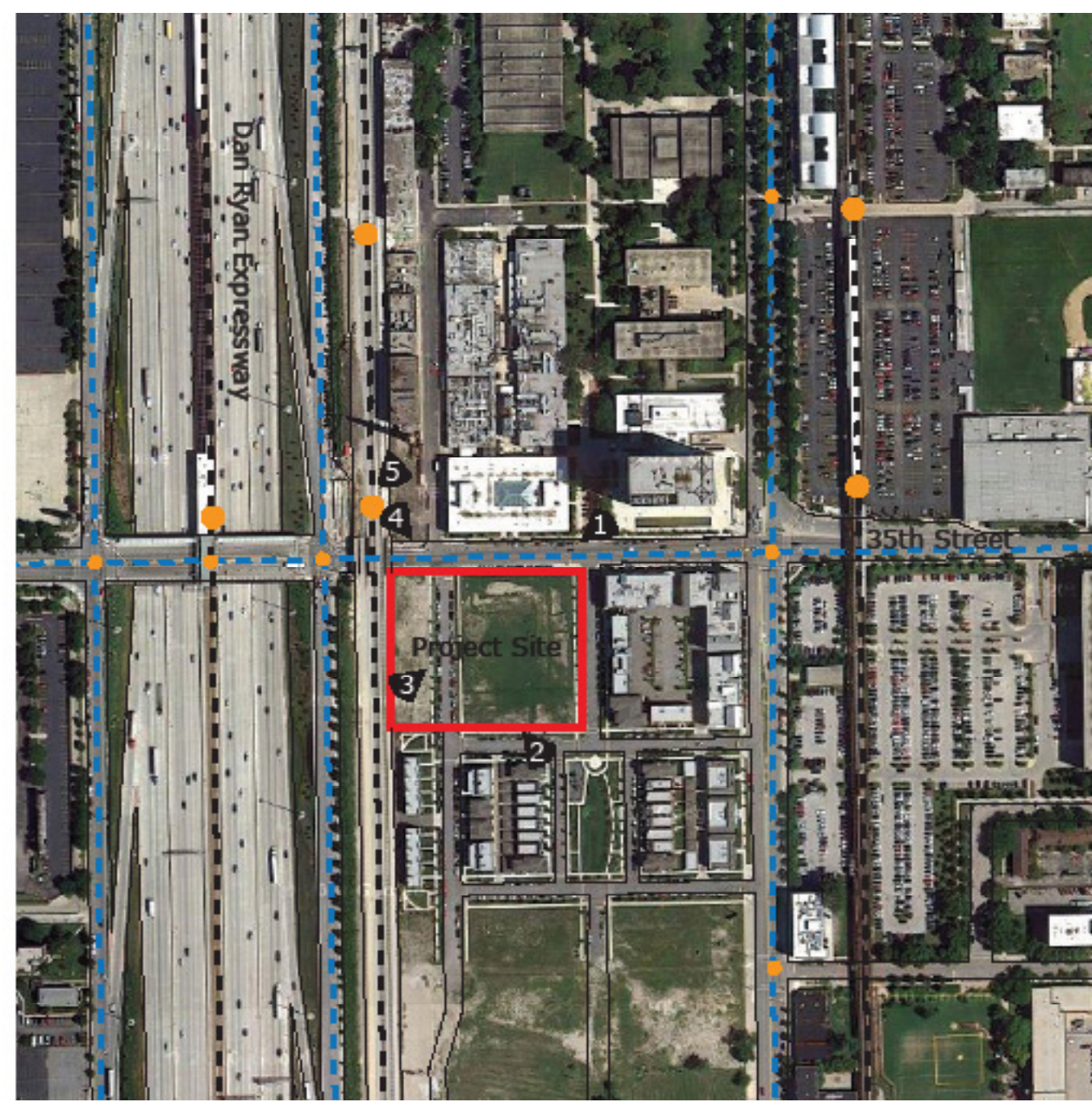


ARCHITECTURAL HYBRID STUDIO

The innovative institute blends the professionalism of the city with the teachings of a studio-based architecture school in the neighborhood of Bronzeville. Thus, this helps the students become exposed to the real world practice, attaining professional principles and experience in the field.

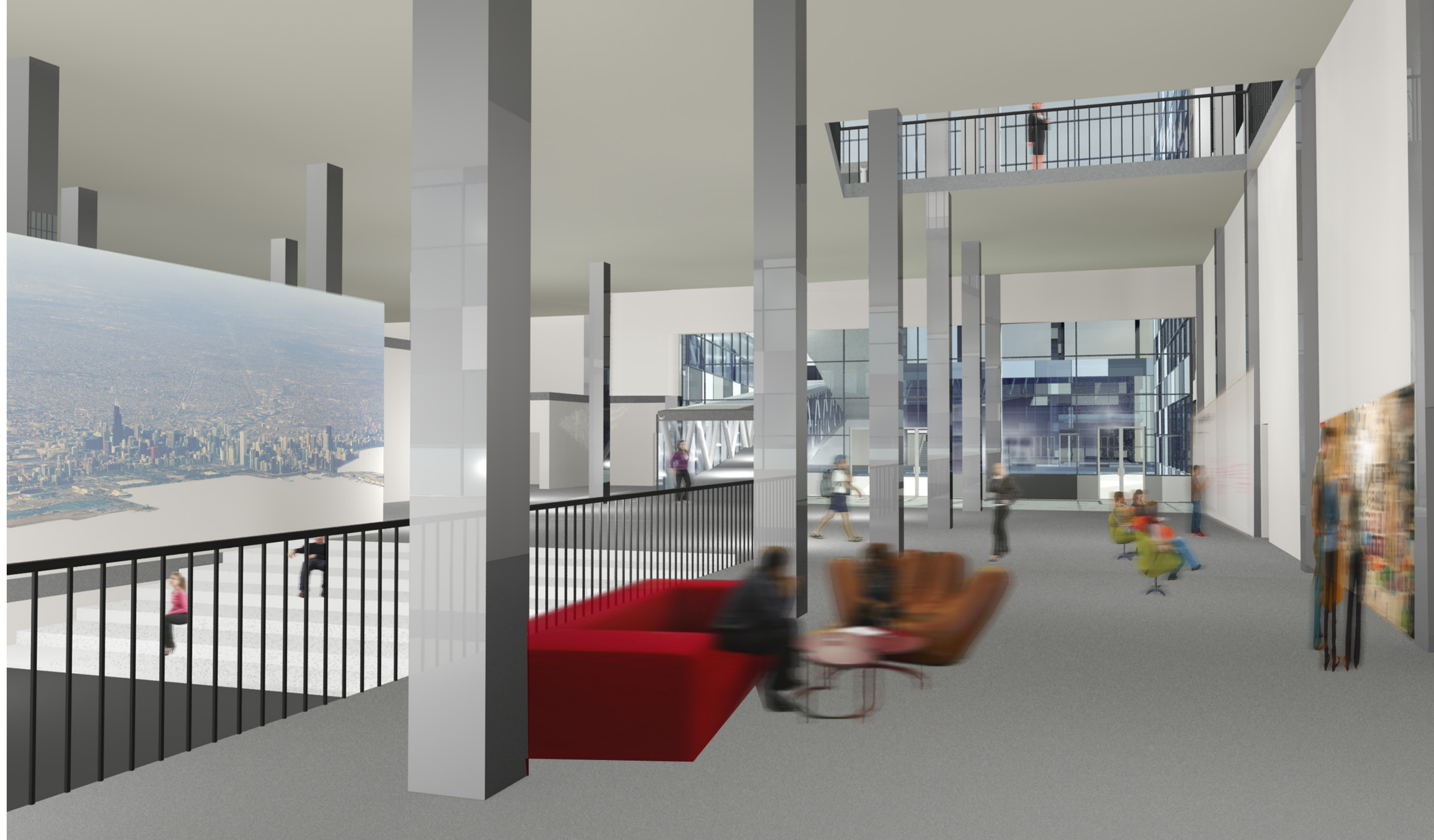
The new institute becomes an incubator for learning and producing great architecture. It combines individuals at various stages of their professional and educational careers. Graduate students, graduates, and working architects share space and together create a unique learning environment. The most significant of these spaces are the various flexible collaborative areas.

These collaborative areas are defined by the spaces around them therefore becoming the space in between. They are also connections between practices, studios, and individuals.

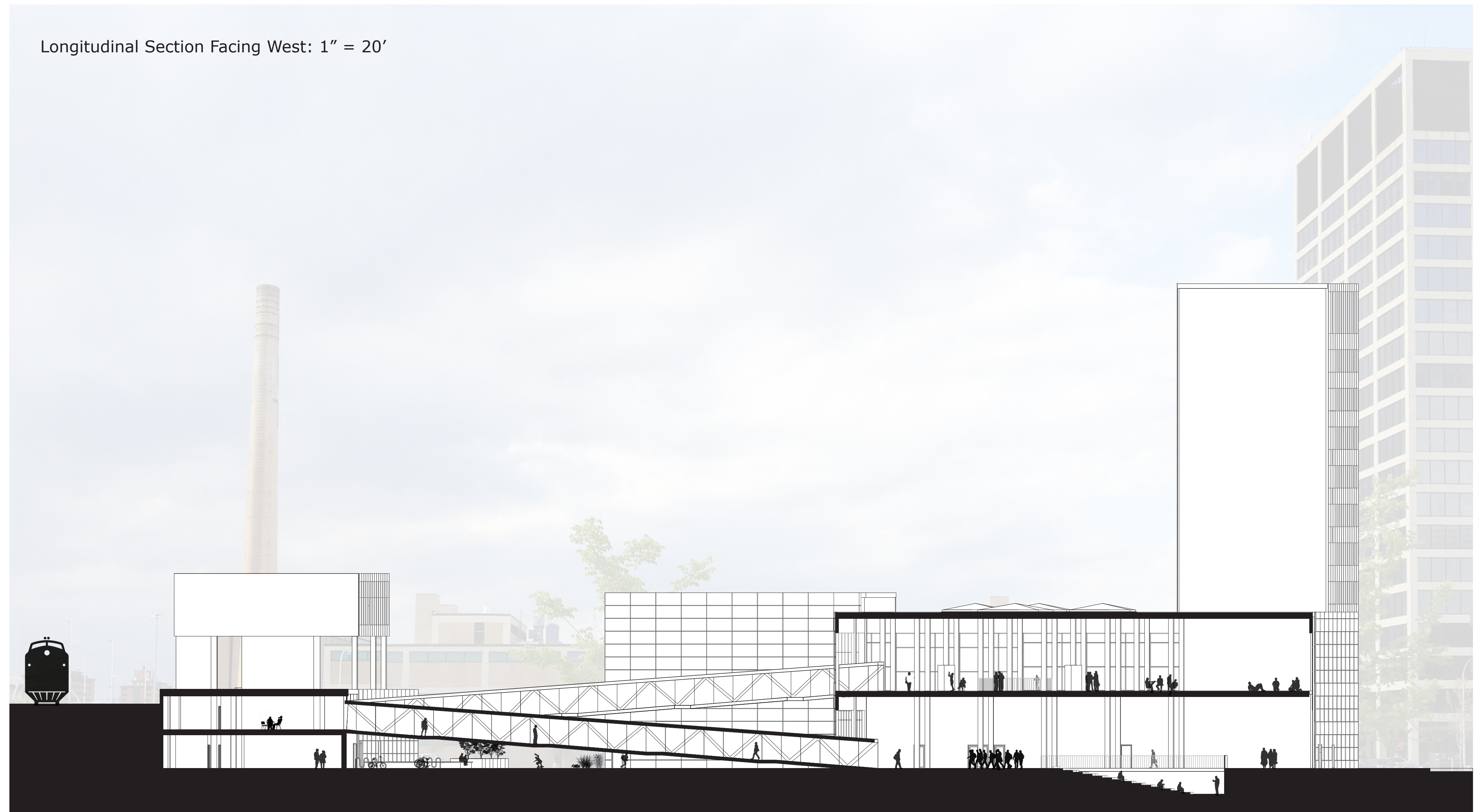


Exploded Axon: 1" = 32'





Longitudinal Section Facing West: 1" = 20'



Cross Section Facing West: 1" = 20'

