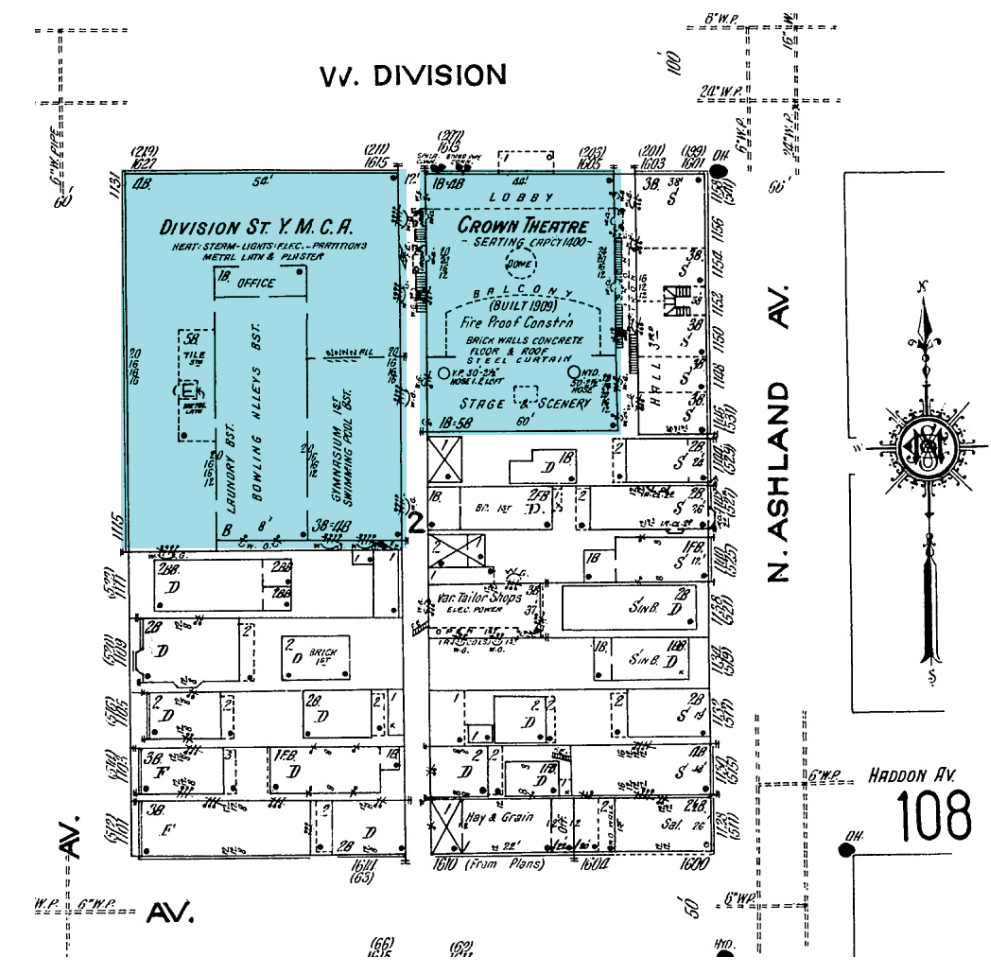
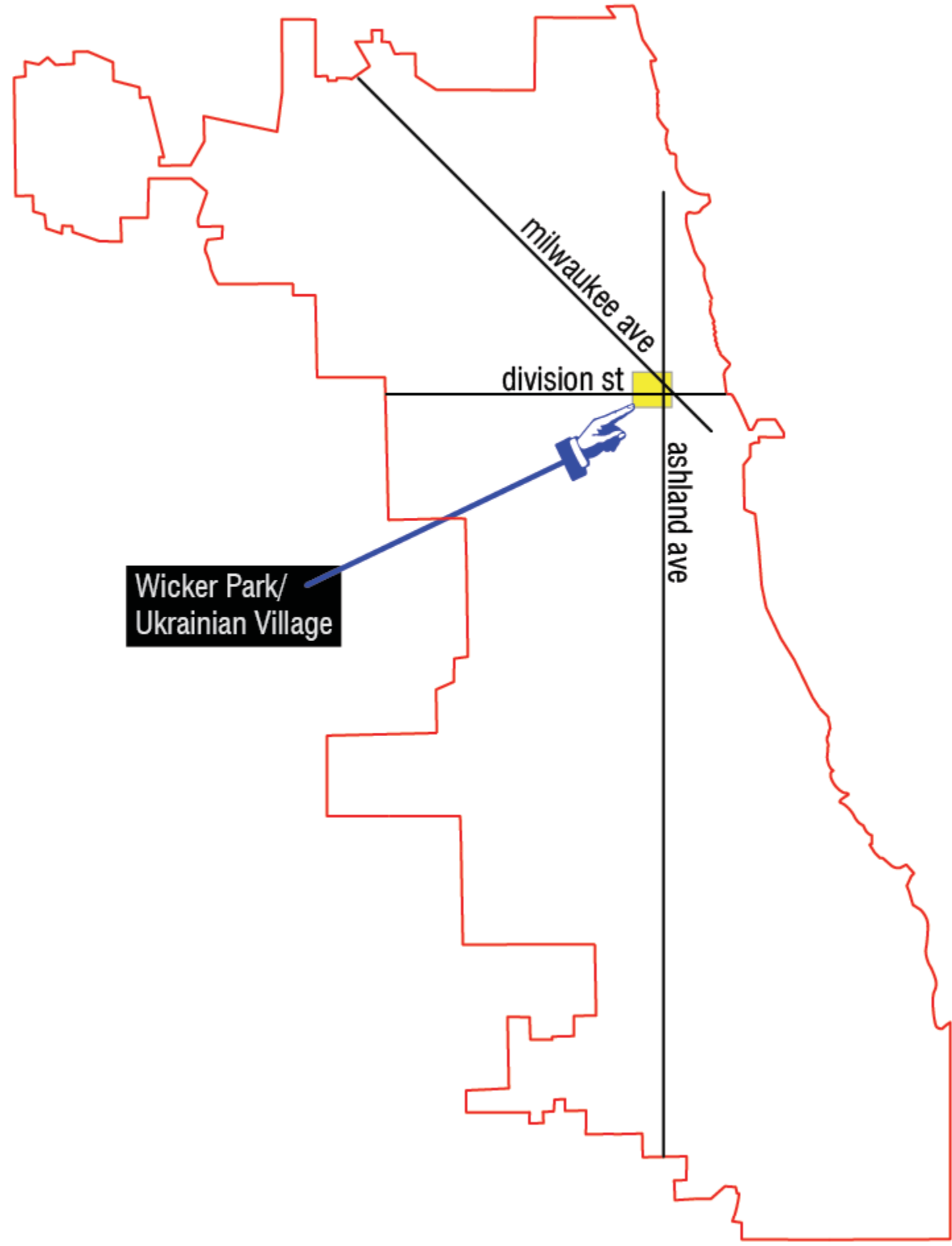


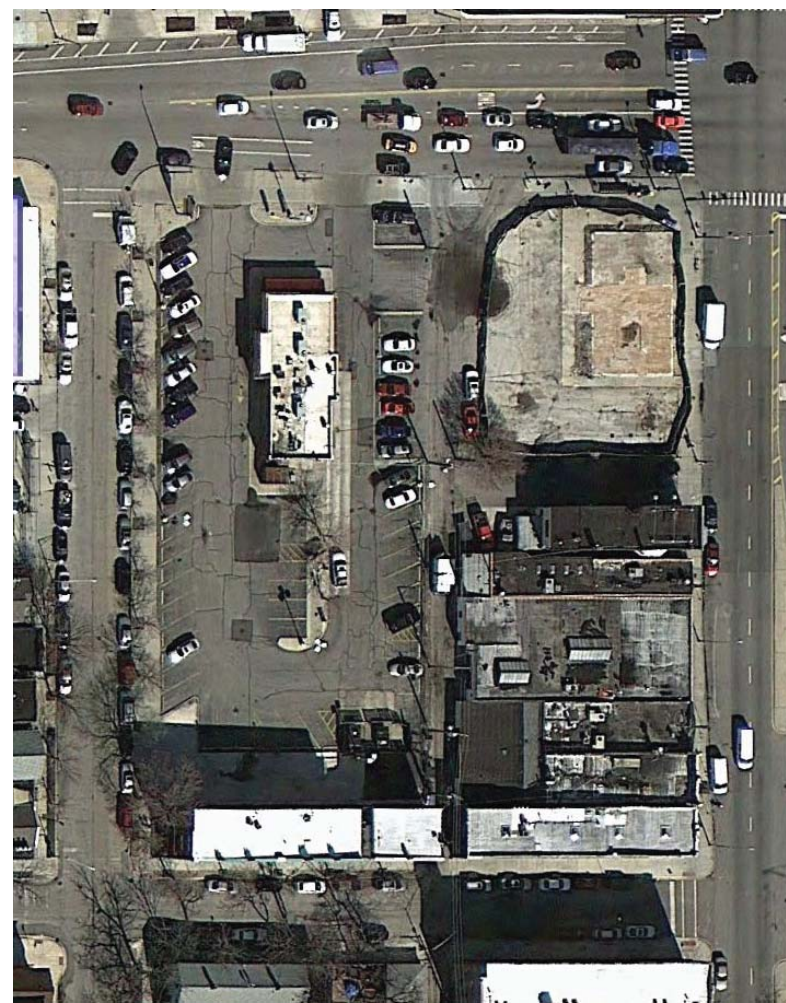
# Division St. Dance Academy

Division Street Dance Academy is designed to form a symbiotic relationship with the neighborhoods of Wicker Park and Ukrainian Village. All too often, new developments in mature Chicago neighborhoods exploit the positive aspects of location for private gain, while contributing little else than gentrification, additional traffic and parking. Wicker Park's history as an artistic and cultural center in Chicago allow it to be an ideal host for the dance facility. The Academy re-emphasizes this connection formally by inviting the public into the building for performances and lectures, and informally by showcasing the movement of rehearsal and circulation. The premier dance studio is placed on corner of the building, exchanging views with the Polish Triangle across the intersection. This dialog happens across the course of a day, with activity levels changing inside and out.

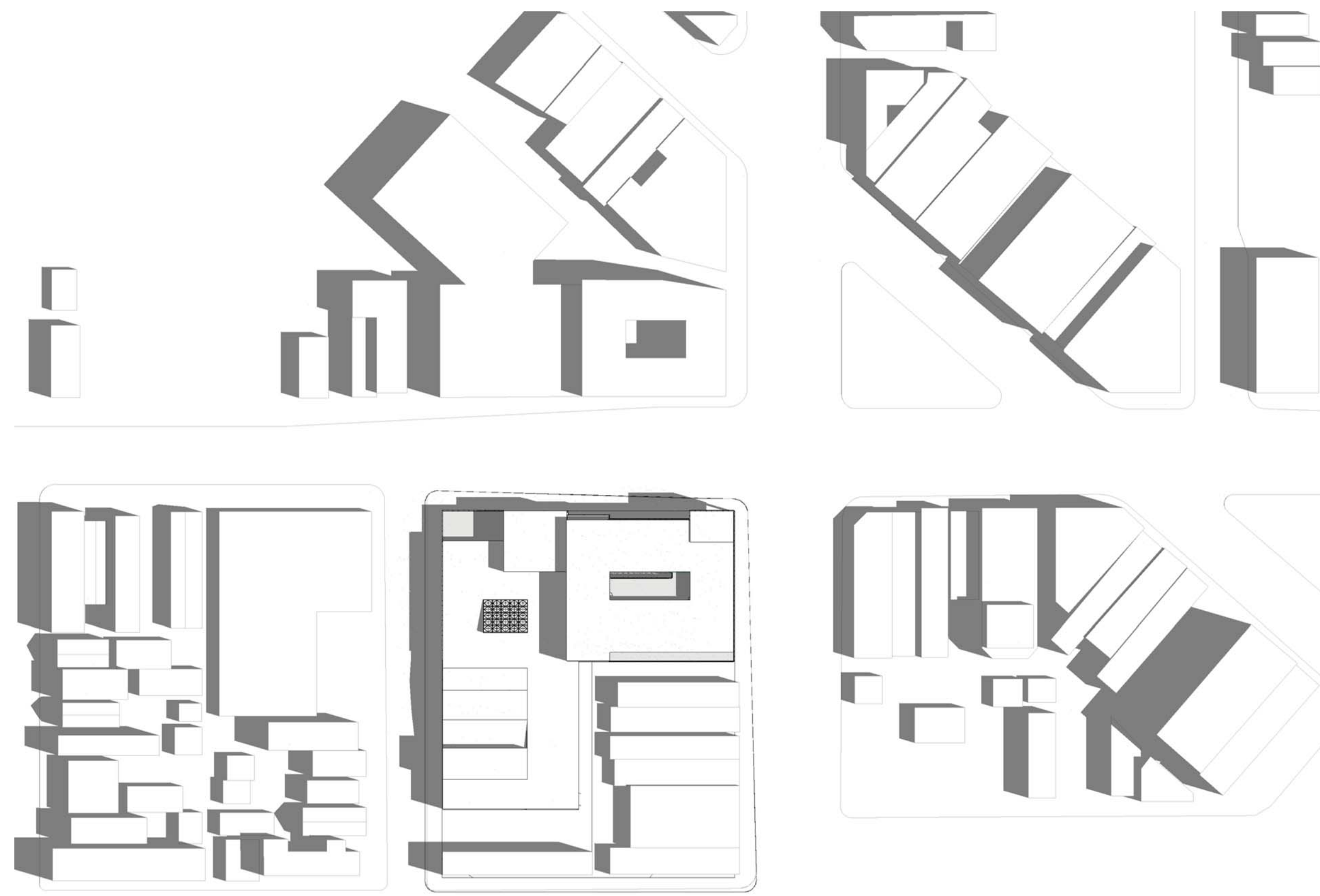
The Division Street Dance Academy is designed to be the home of a professional modern dance company, teaching academy with residences for out-of-town students and a performing arts venue with a 300-seat mainstage auditorium, 99-seat convertible black box theater and a 120-seat lecture hall. Much as the visual transparency of the envelope connects the academy to the neighborhood, a series of double-height spaces create vertical connections within the building.



1951 Sanborn Fire Insurance map



2012 Google Earth image



Division Street Dance Academy site plan, 1"=80'

## 24 hours at Division St Dance Academy:

**Early through mid morning:**  
resident dancers rise in their dorms  
sunrise yoga class in jewel box studio  
administrative staff arrives  
neighbors and students get coffee and breakfast at the cafe



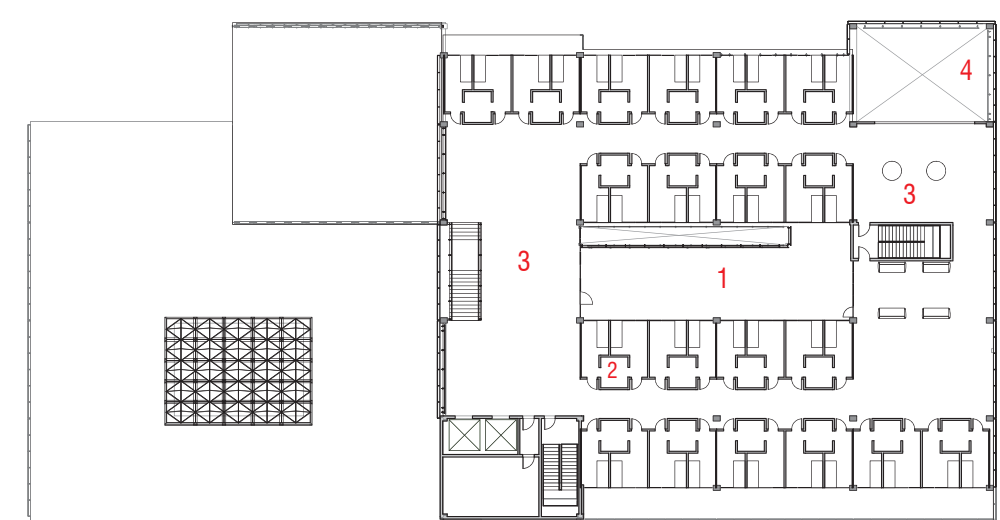
**Throughout the day:**  
company dancers and students rehearse in studios  
classrooms, library and physical therapy on second floor  
administrative staff conducts business at street level  
cafe continues to serve the neighborhood



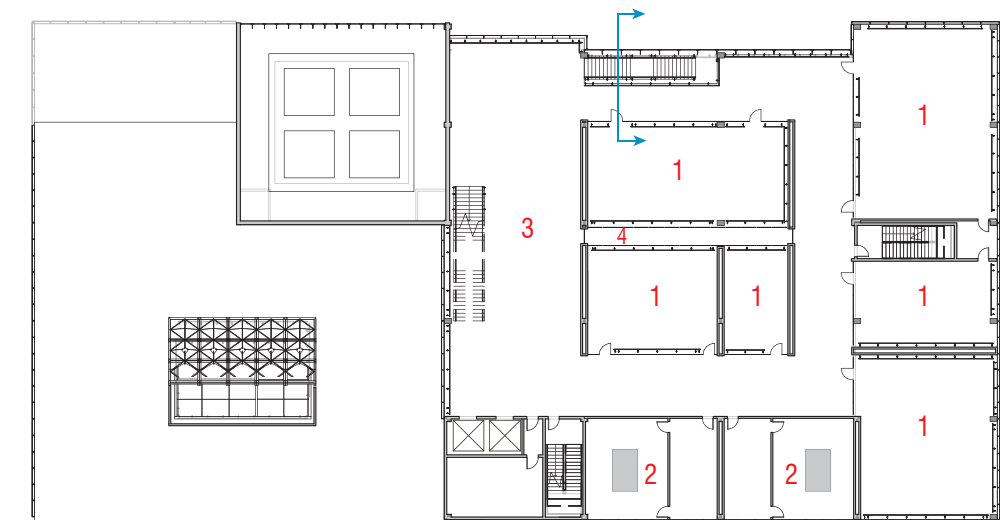
**Evening through late night:**  
performances in main stage and black box theaters  
drinks in the lobby  
lectures in the studio auditorium  
late evening yoga classes in the jewel box studio  
resident dancers retire to the dorm level



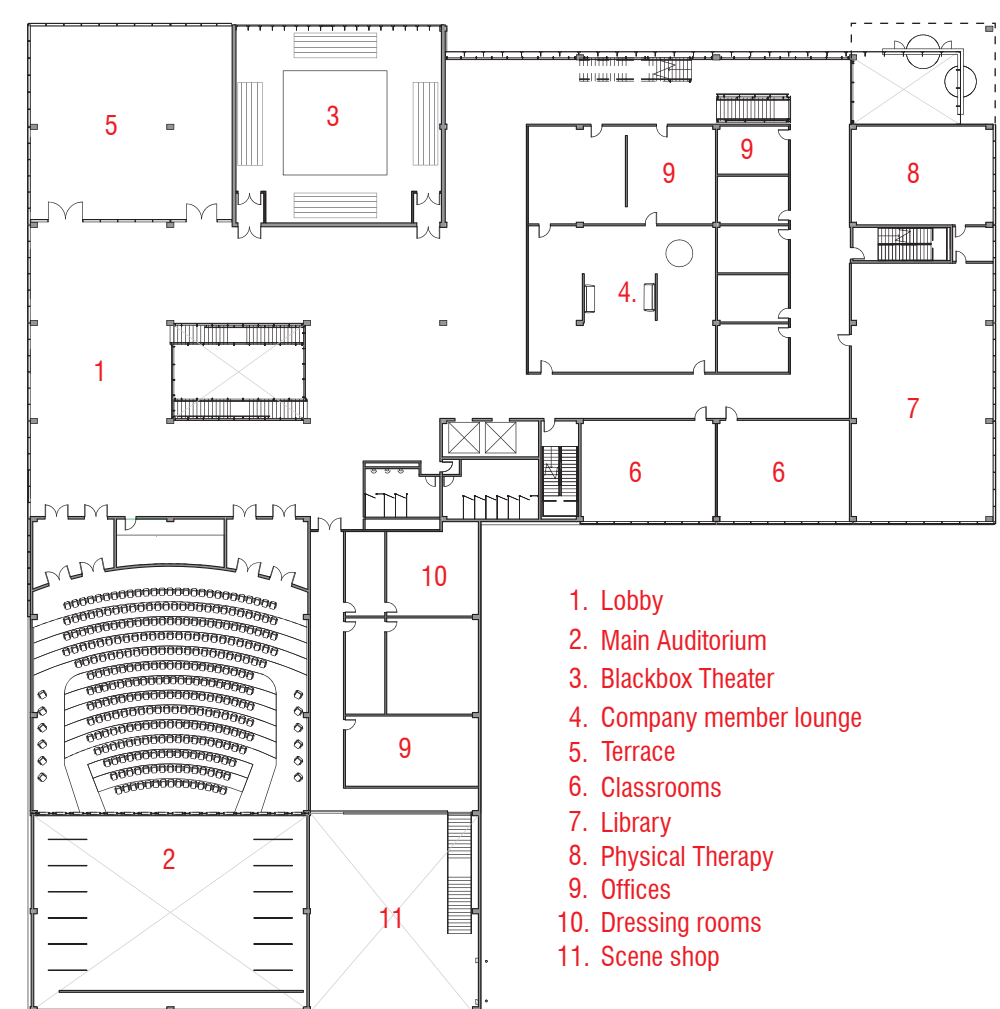




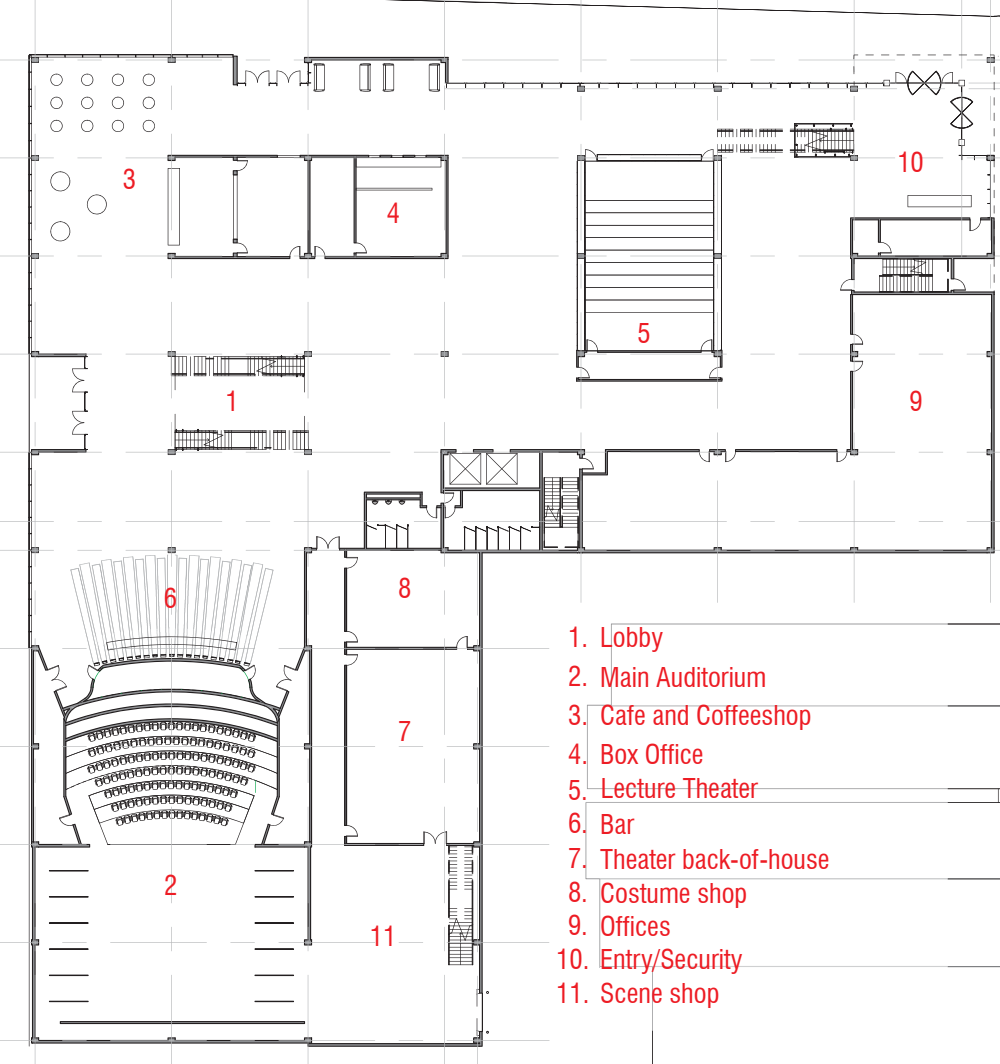
Level 04 1"=50'



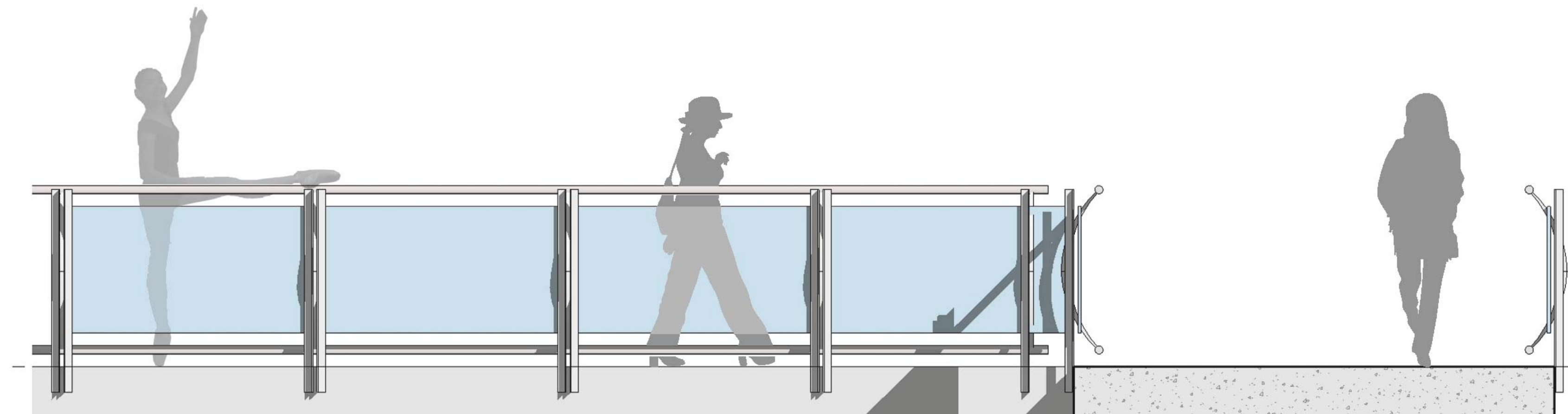
Level 03 1"=50'



Level 02 1"=50'



Level 01 1"=50'



Envelope Section, 1/4"=1'

Vegetated roof

Double dormitory unit

Dance Studio "B"

Harlequin Dance Floor

Subfloor Systems Distribution

Dance Company Lounge

Lecture Theater