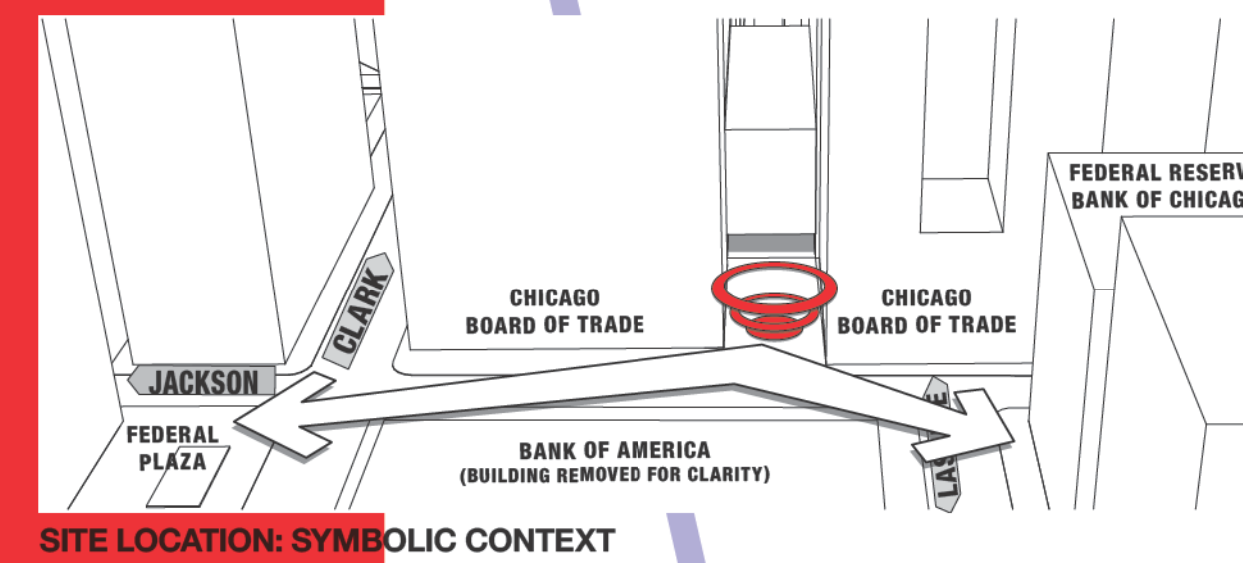
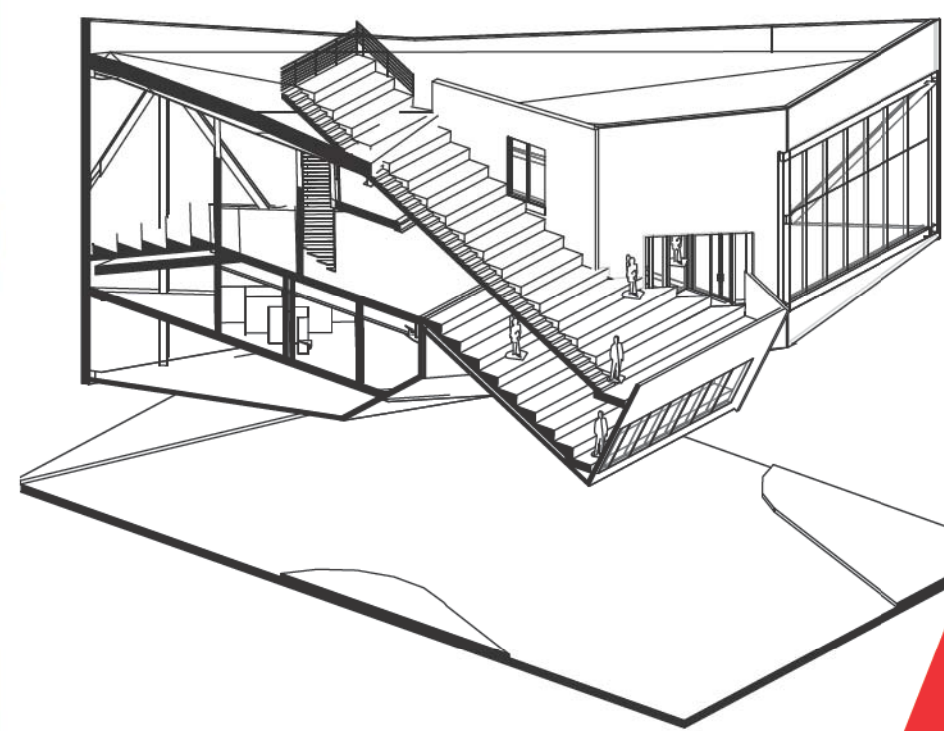
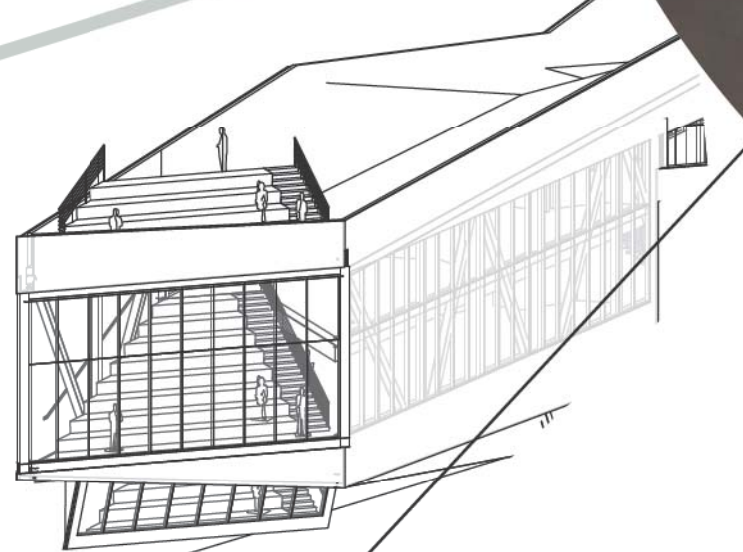
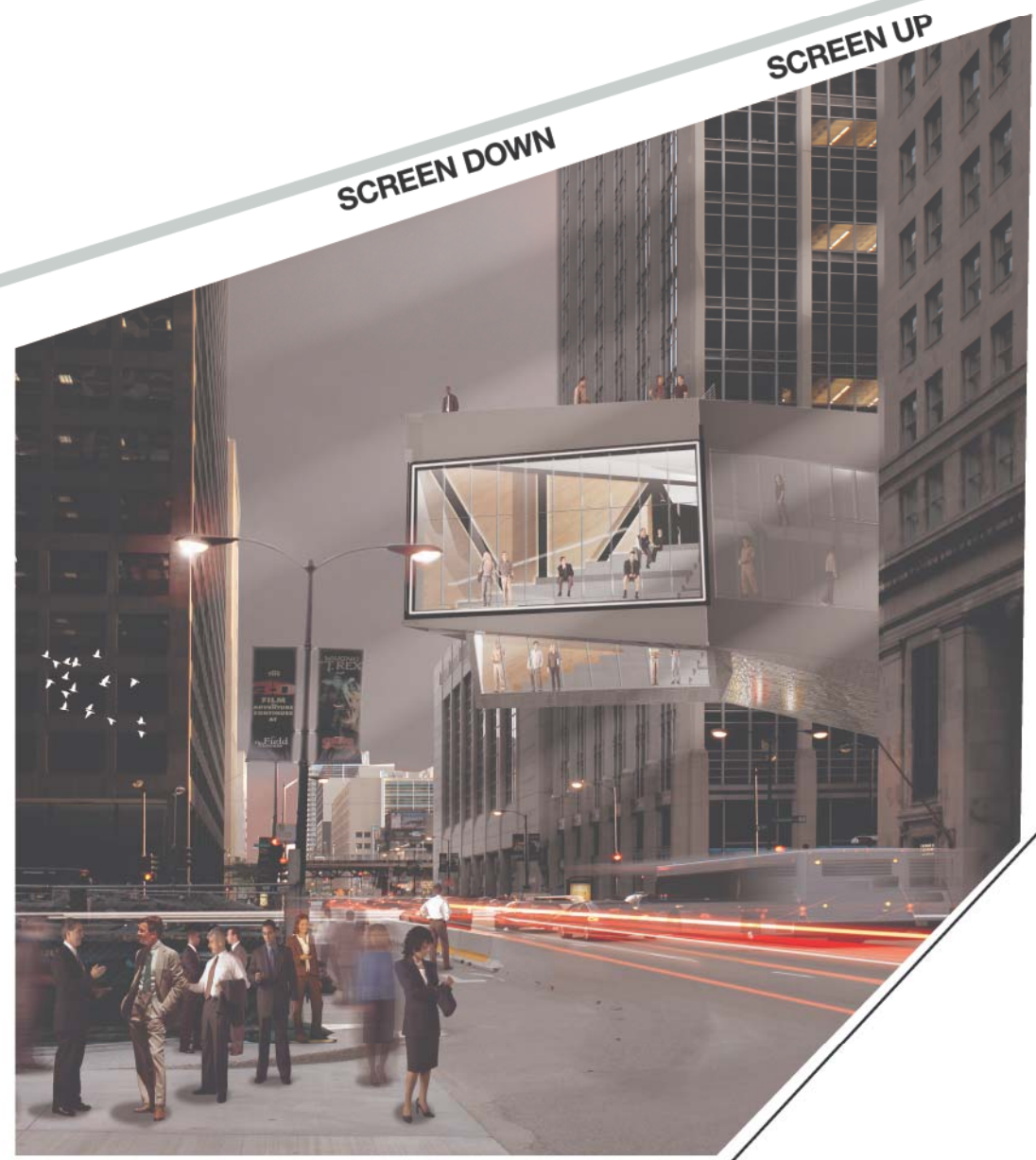
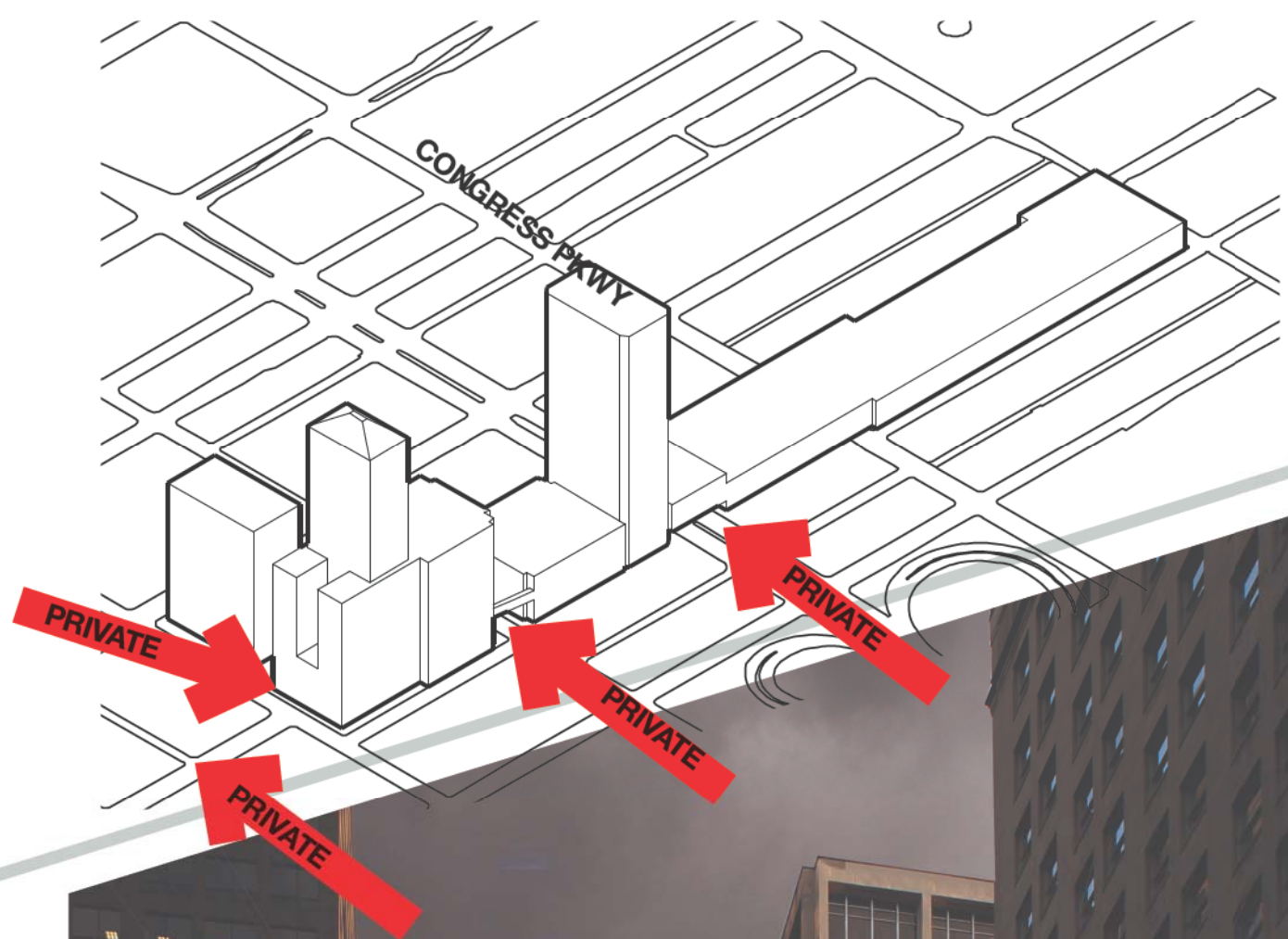


# UNIVERSITY OF CHICAGO CENTER FOR CIVIL DISOBEDIENCE



IMPETUS: THE PRIVATIZATION OF PUBLIC SPACE



SITE LOCATION: SYMBOLIC CONTEXT

EXTRUDED EDGES

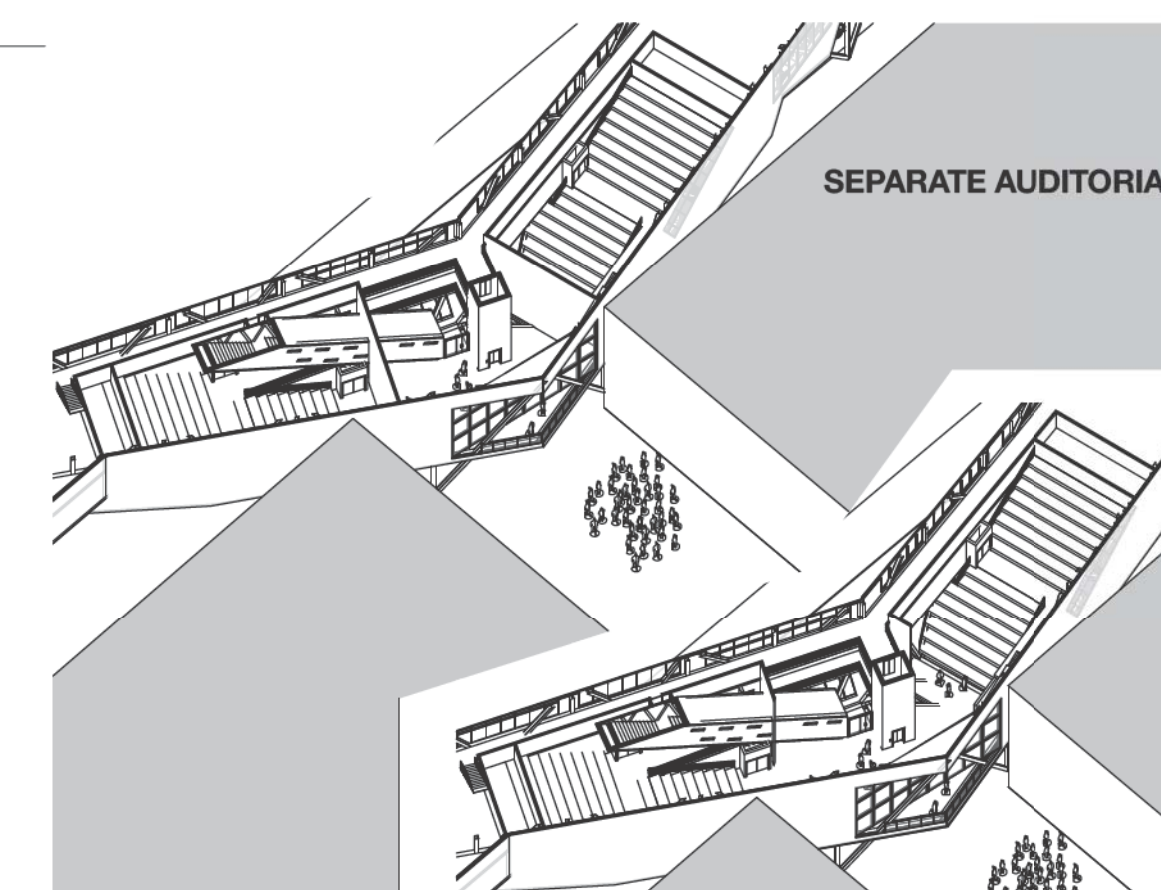
RAISED TO MAINTAIN VEHICULAR TRAFFIC FLOW

PROGRAM IS HUNG FROM ARMATURE

UPPER PLAZA: COMMUNAL TOPOGRAPHY

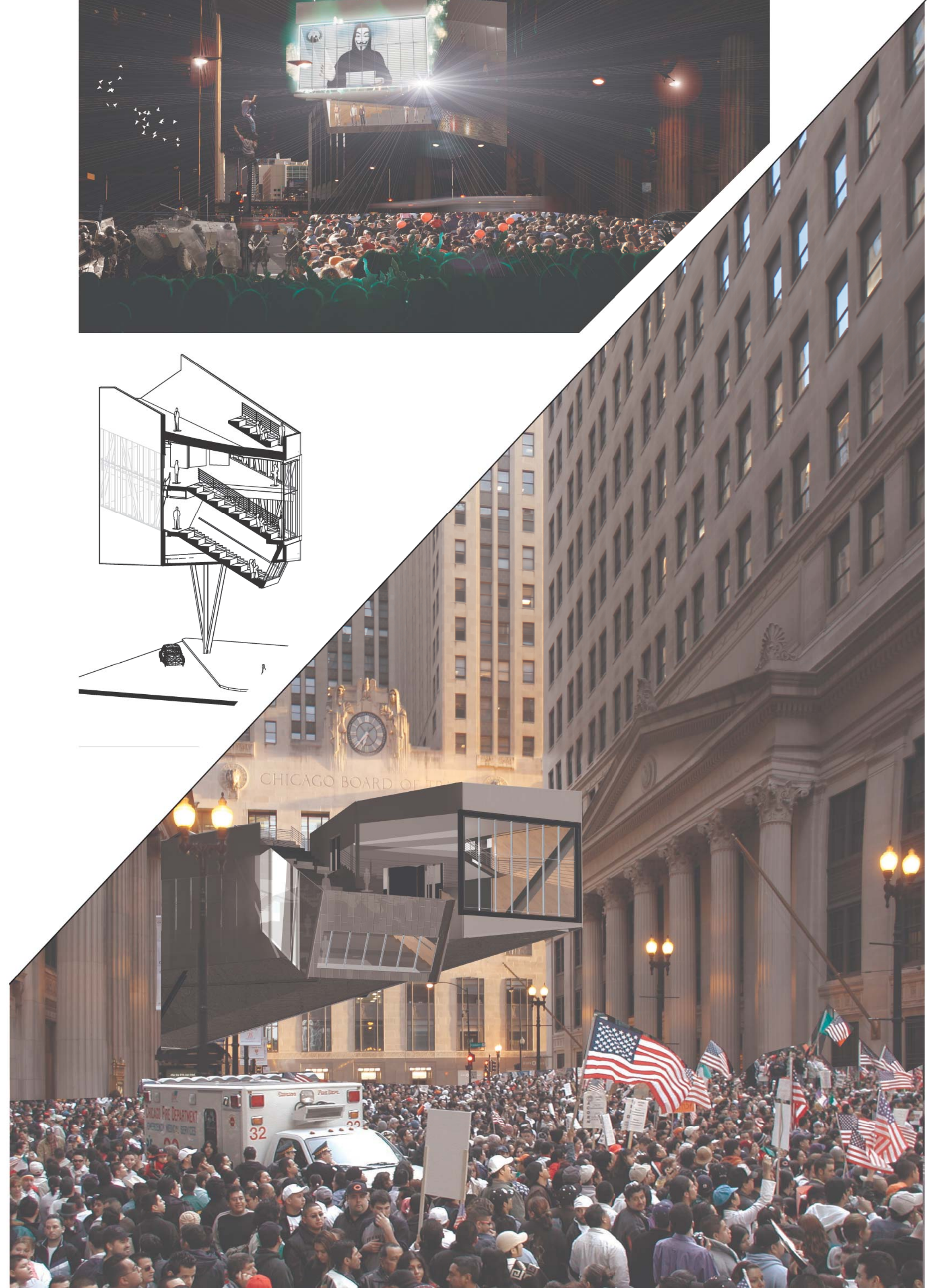
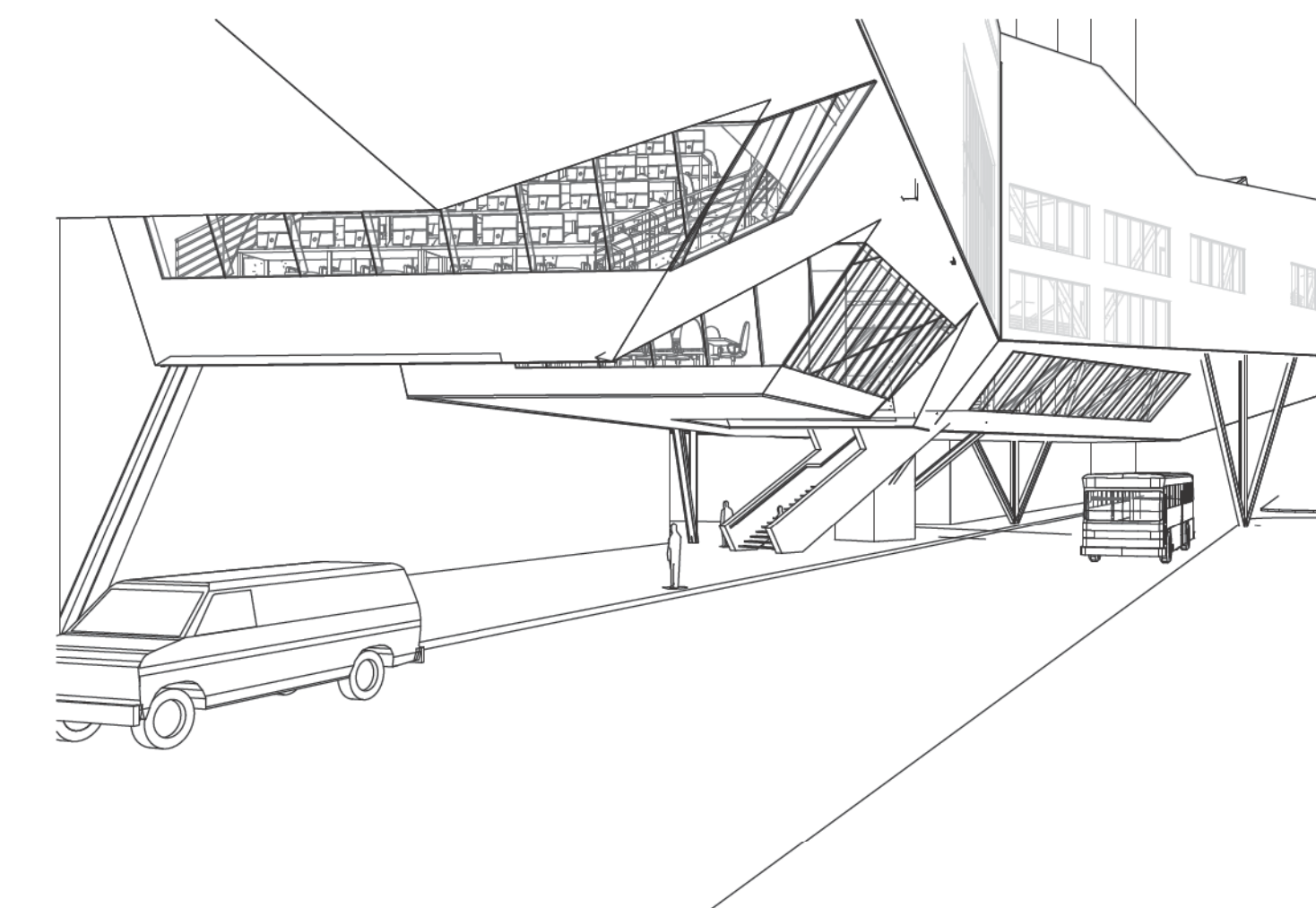
LOWER PLAZA: FLEX-SPACE

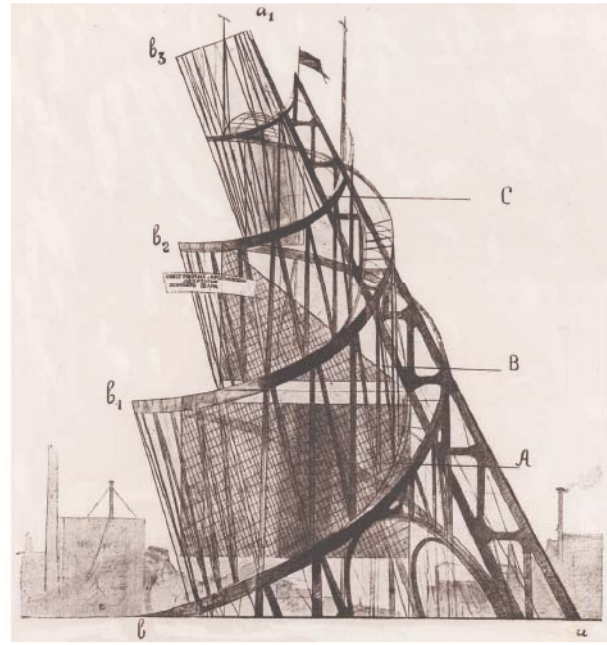
DIAGRAM TRANSLATED TO ARCHITECTURE



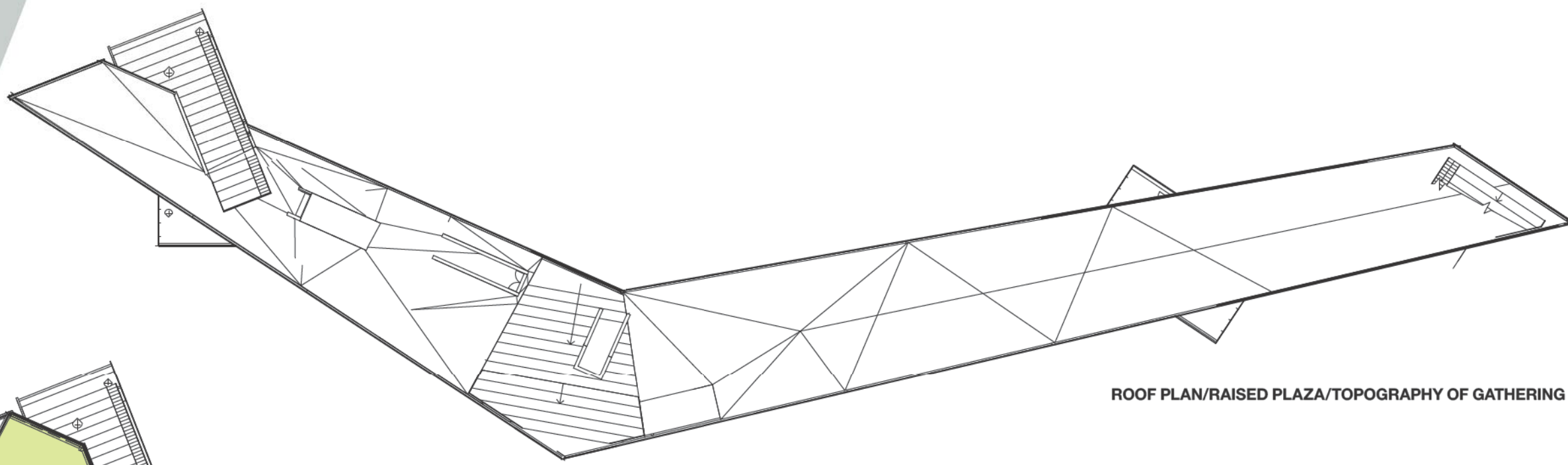
AUDITORIA OPEN TO EACH OTHER

AUDITORIA OPEN TO THE STREET

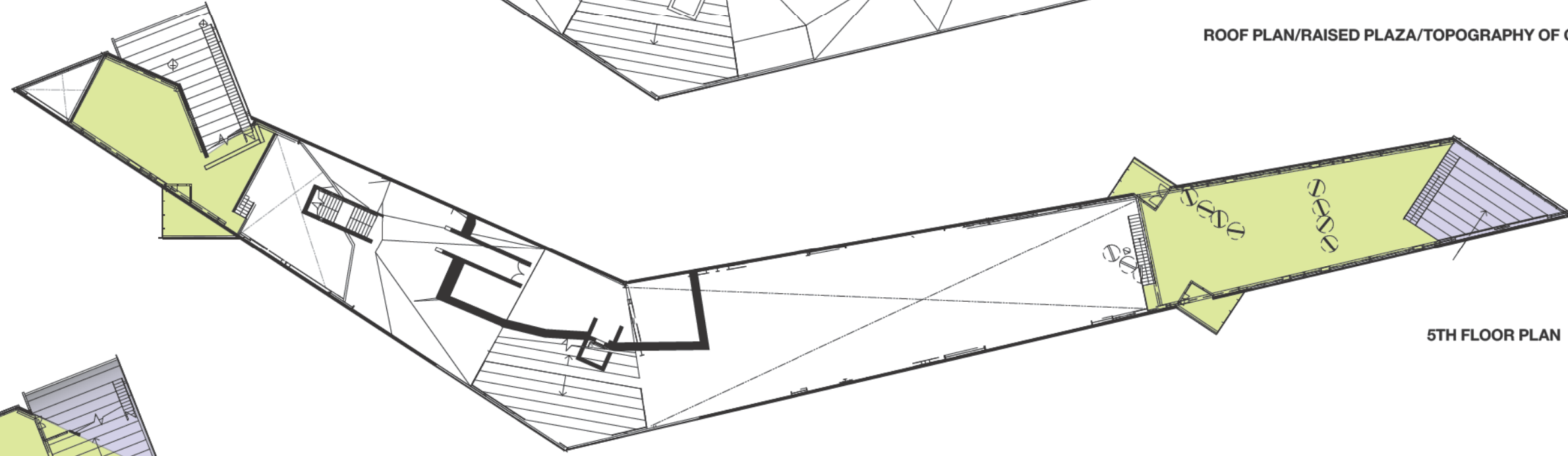




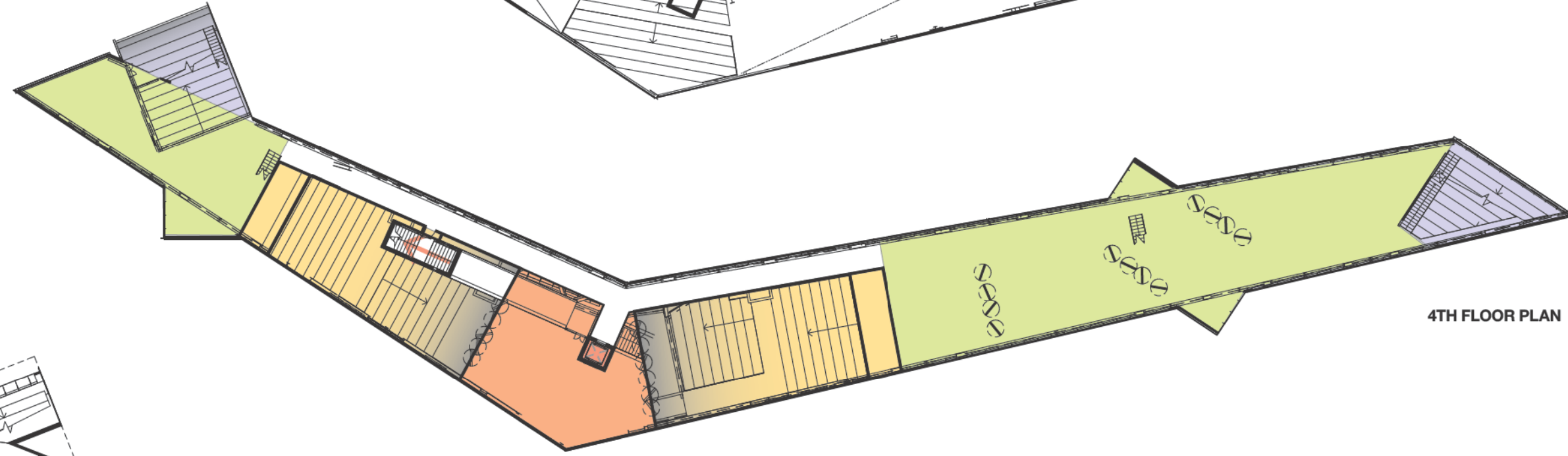
"ONLY THE CONSTRUCTIVISTS CAME CLOSE TO DEVELOPING A NEW ARCHITECTURE REPRESENTING THE NEW POLITICS OF THE TIME."  
- HENRI LEFEBVRE



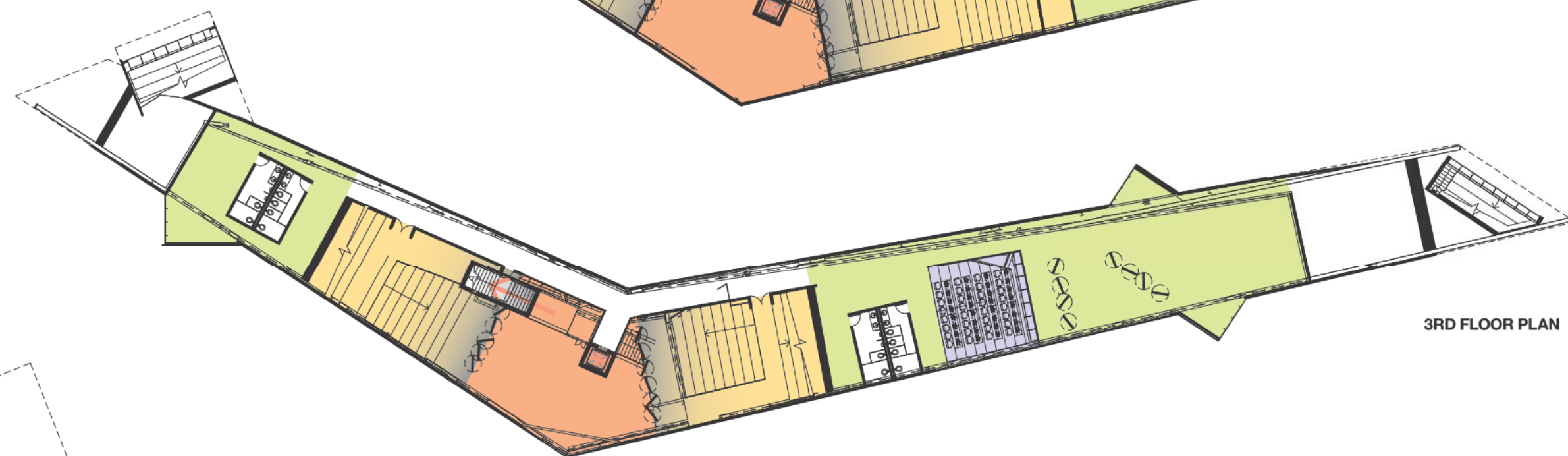
ROOF PLAN/RAISED PLAZA/TOPOGRAPHY OF GATHERING



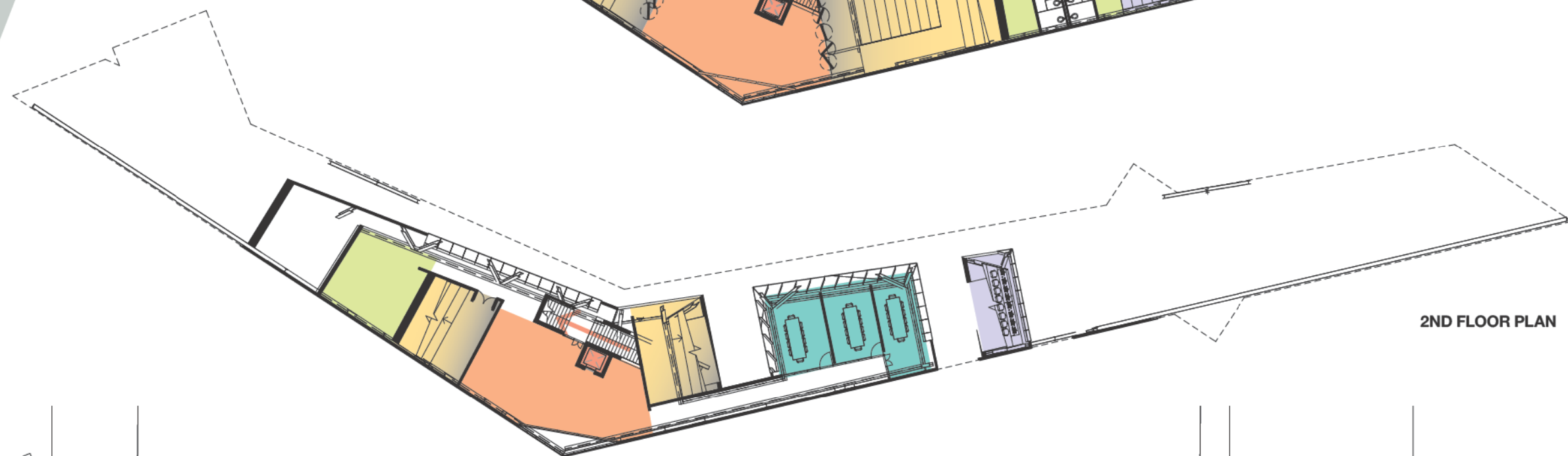
5TH FLOOR PLAN



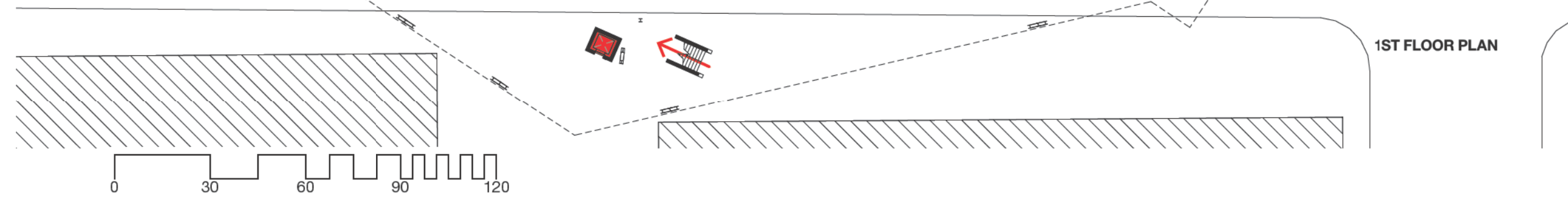
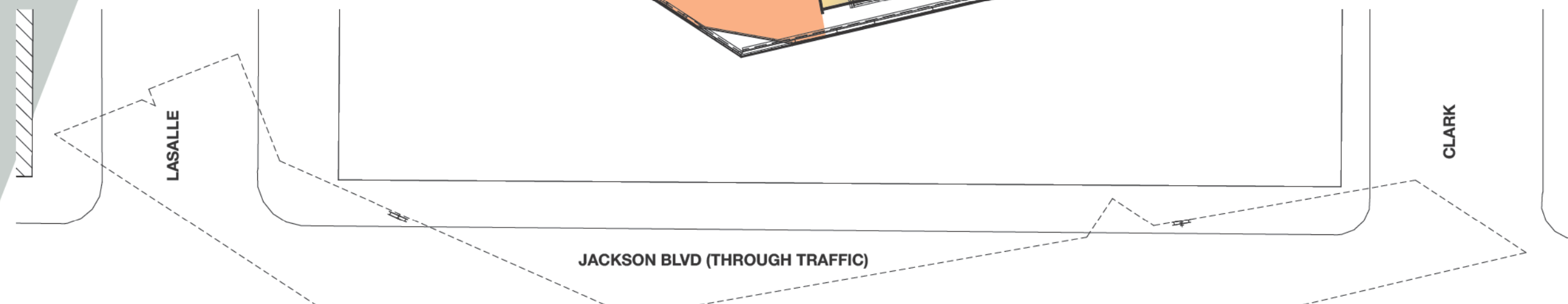
4TH FLOOR PLAN



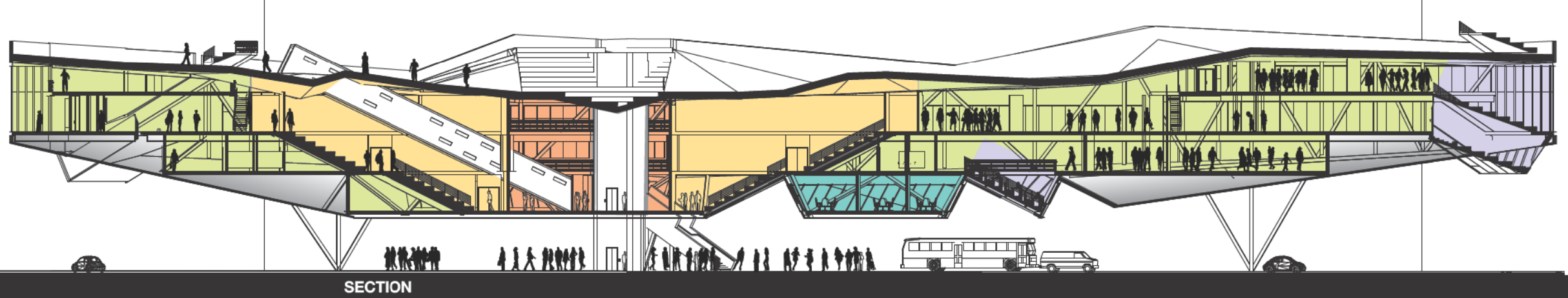
3RD FLOOR PLAN



2ND FLOOR PLAN



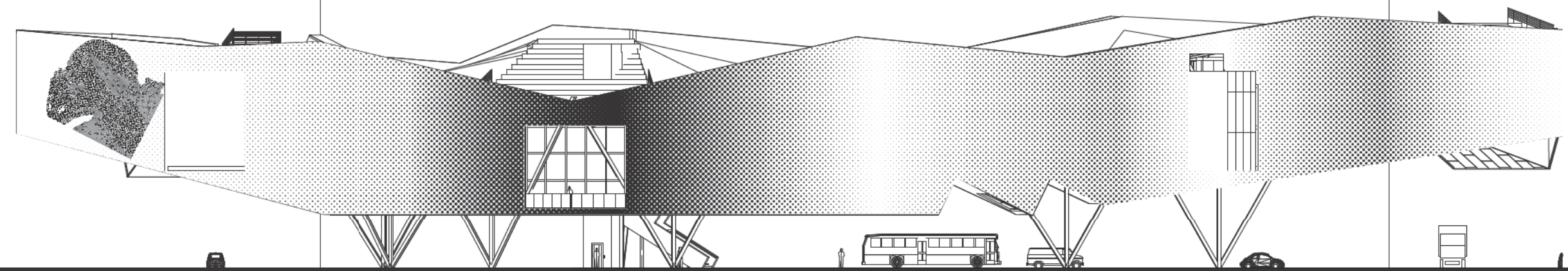
1ST FLOOR PLAN



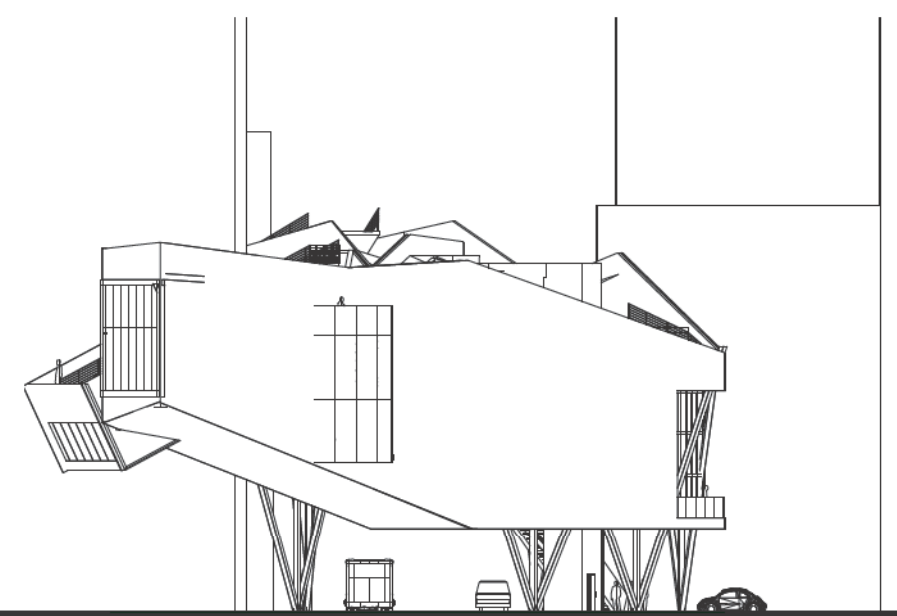
SECTION



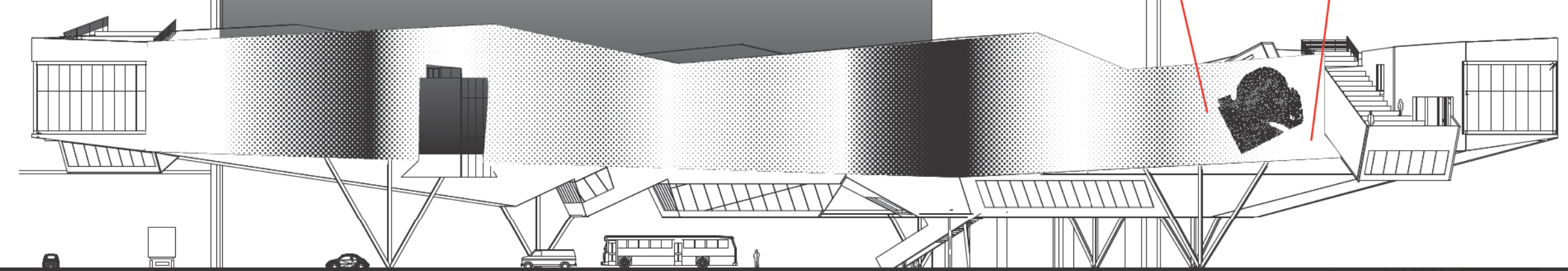
EAST ELEVATION



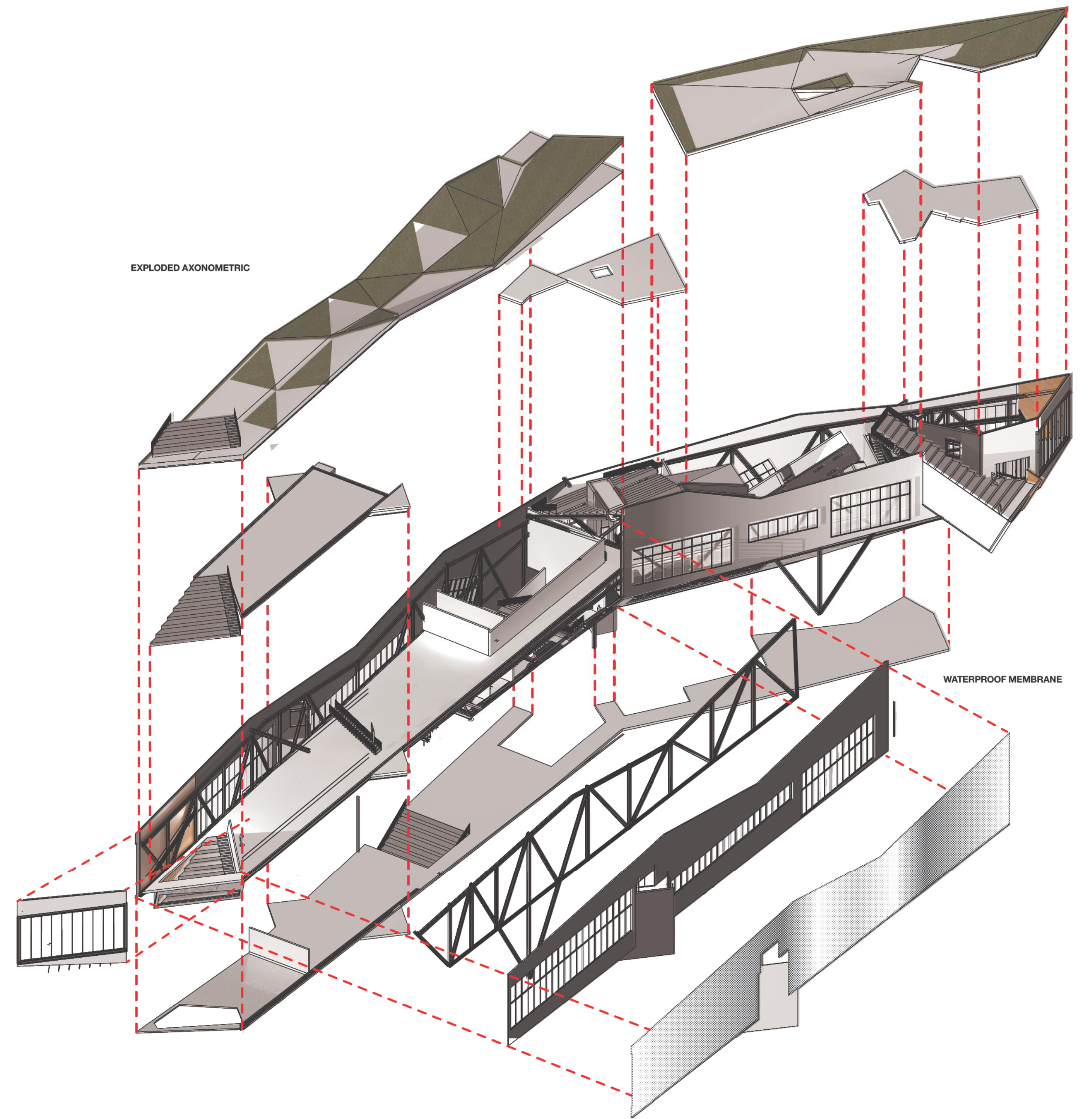
SOUTH ELEVATION



WEST ELEVATION

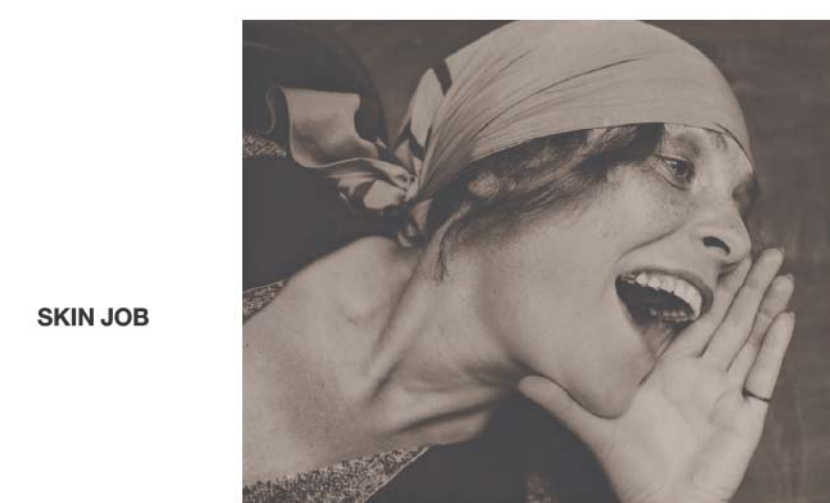


NORTH ELEVATION



EXPLODED AXONOMETRIC

WATERPROOF MEMBRANE



SKIN JOB

