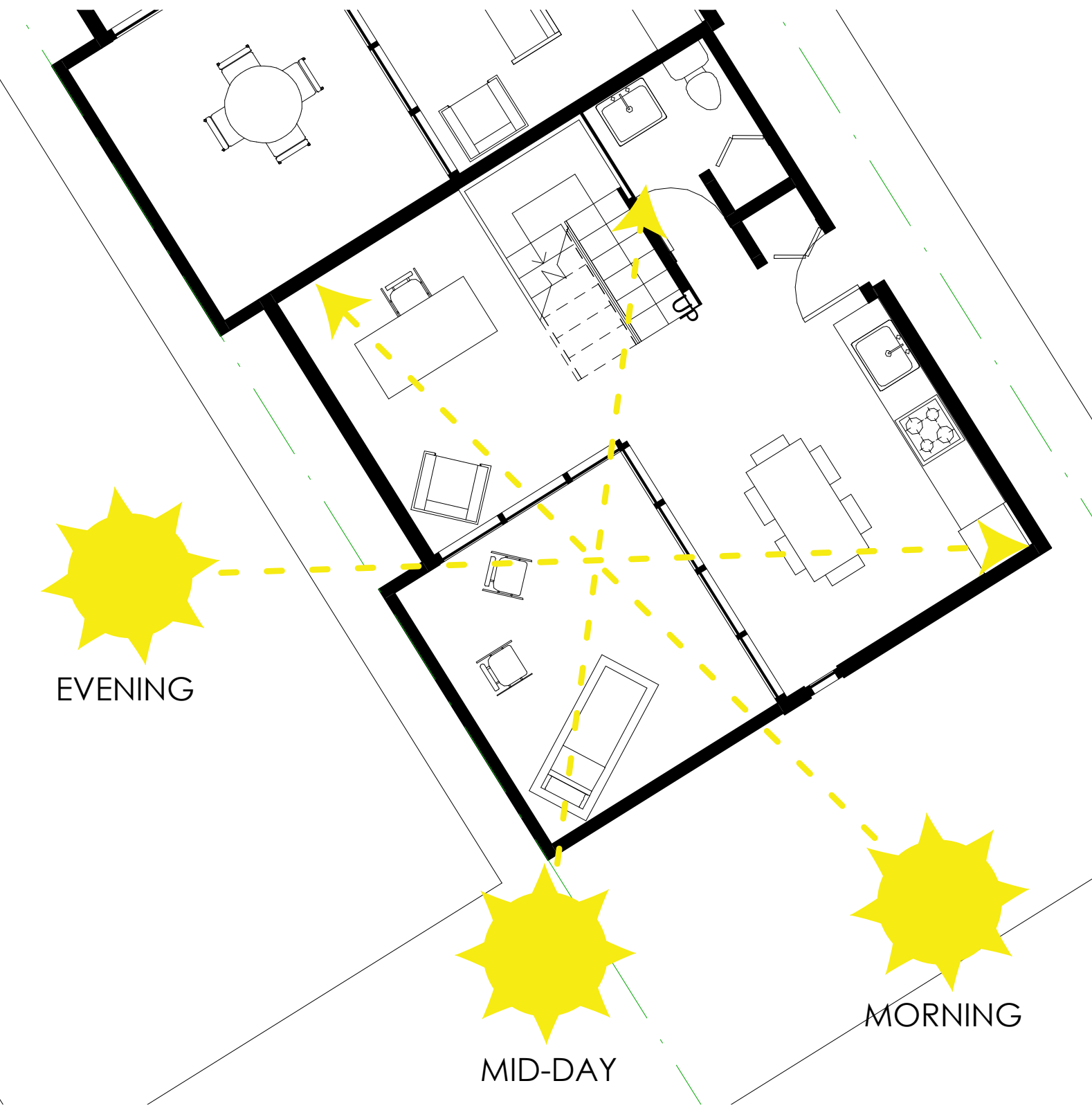
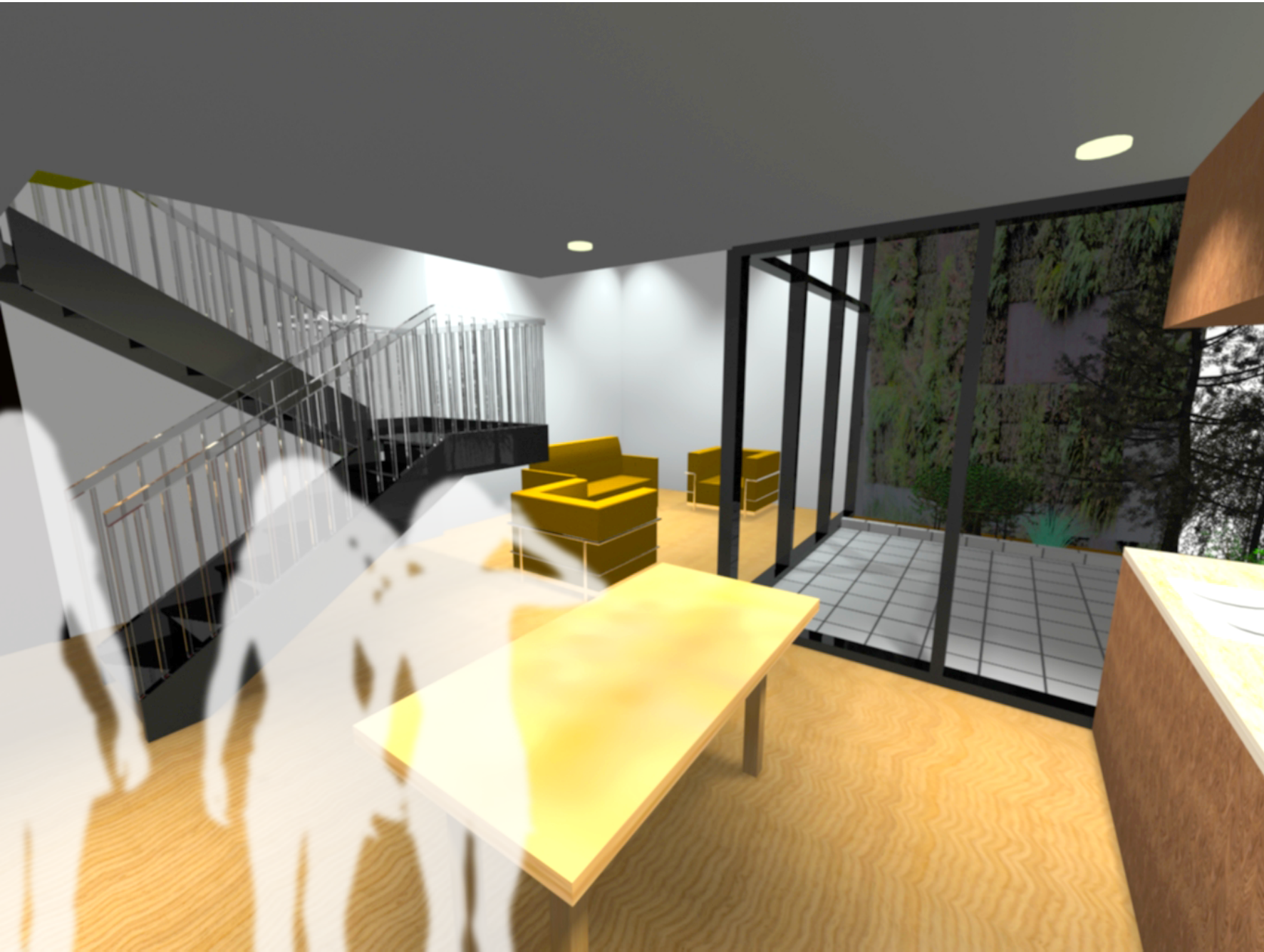
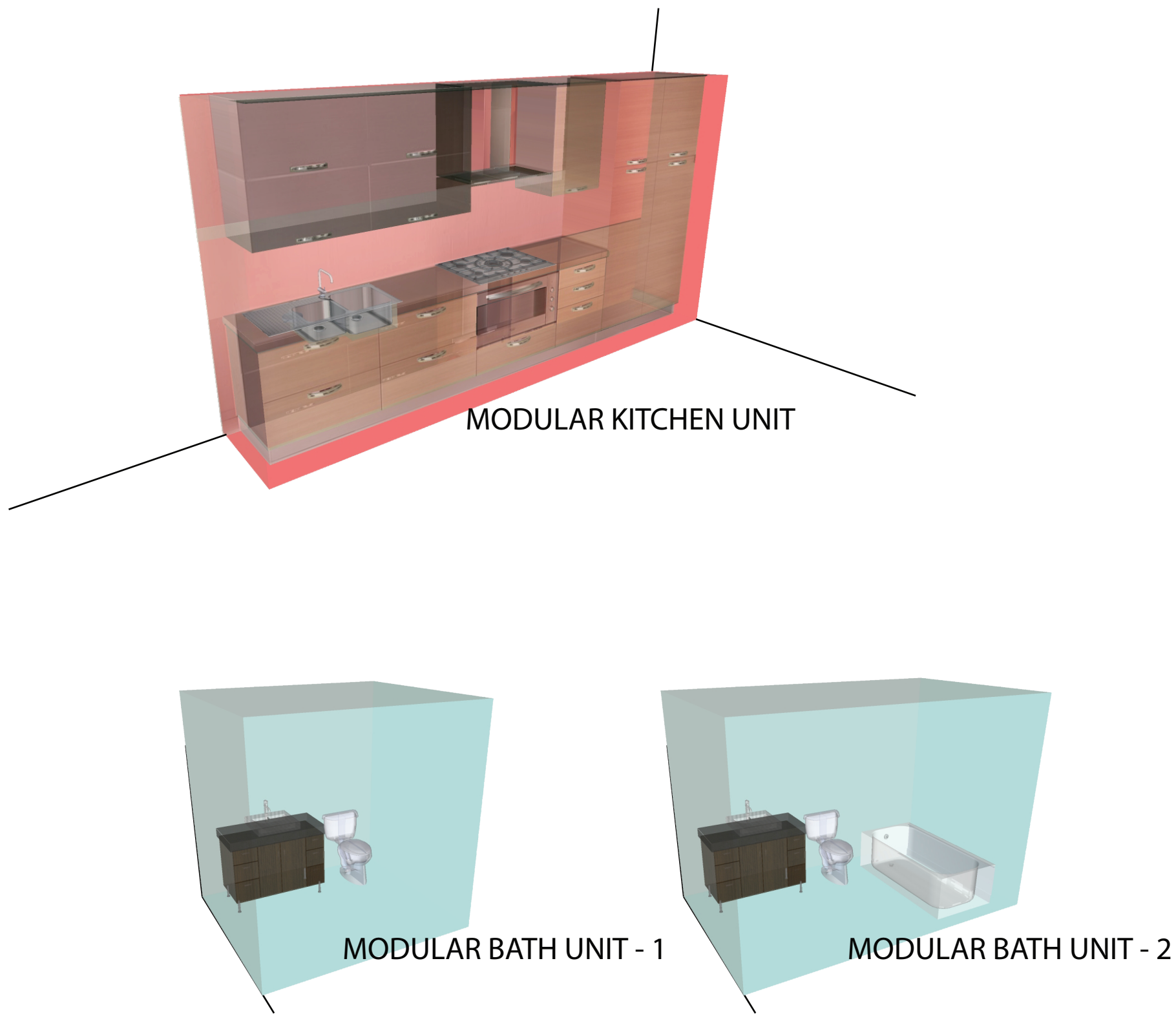
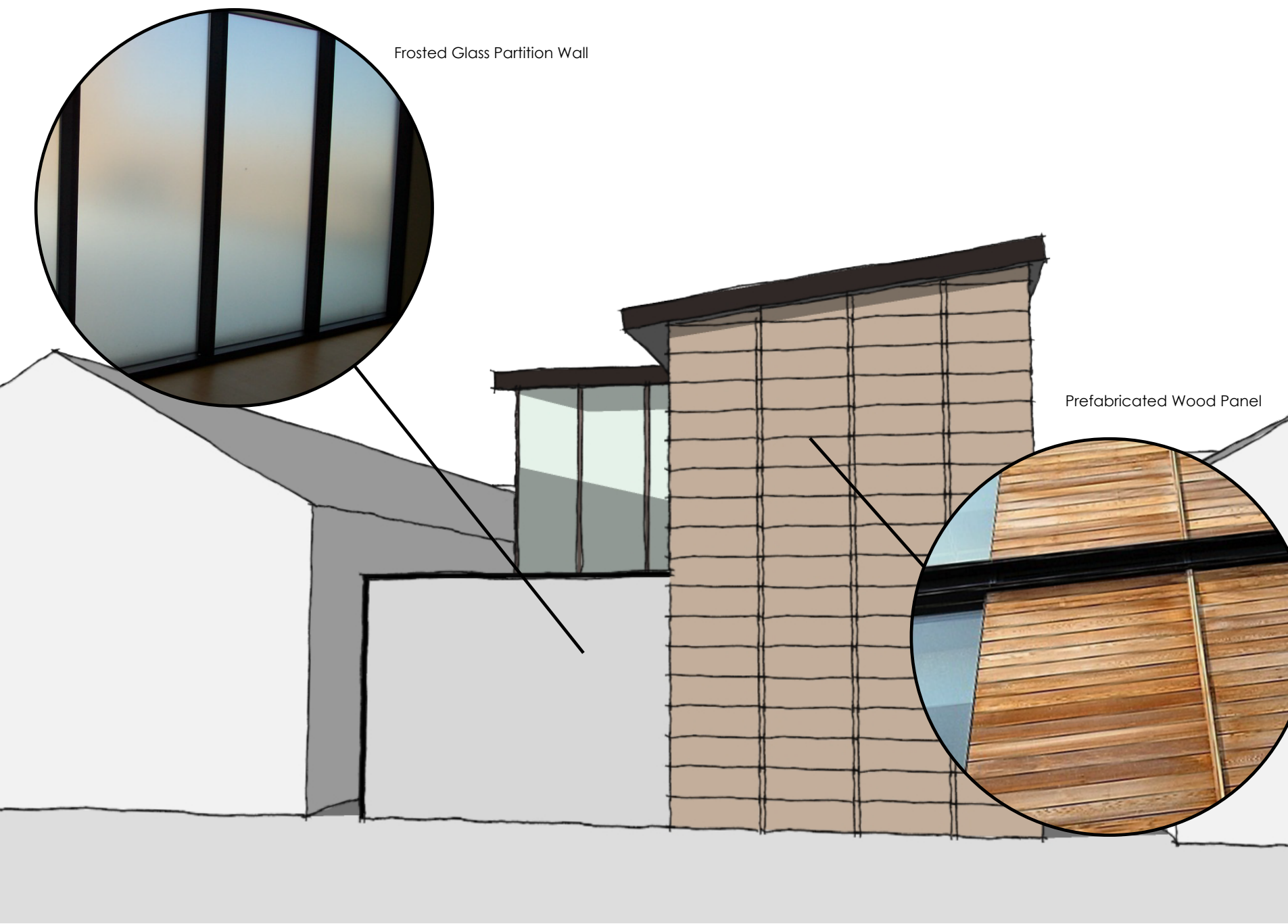
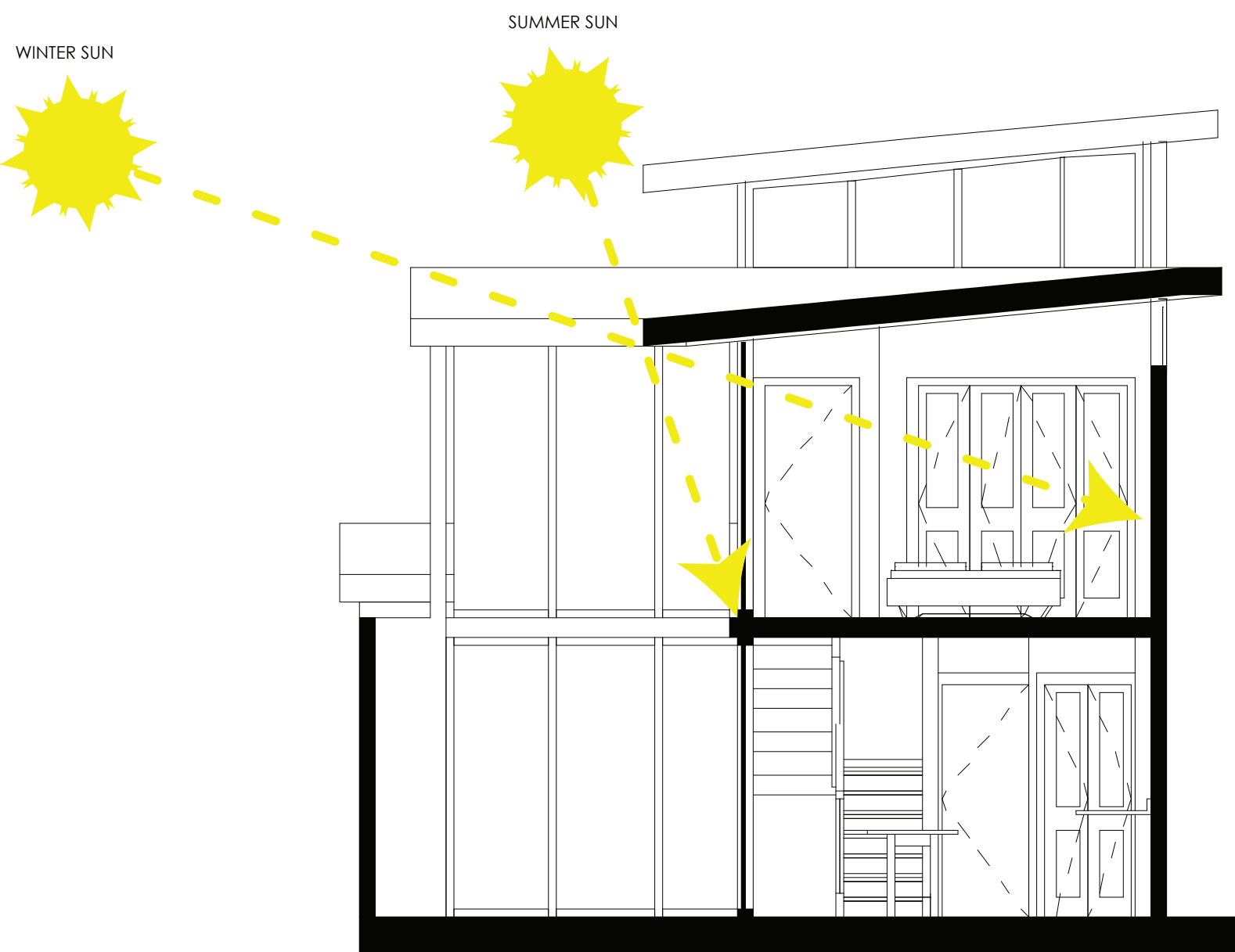
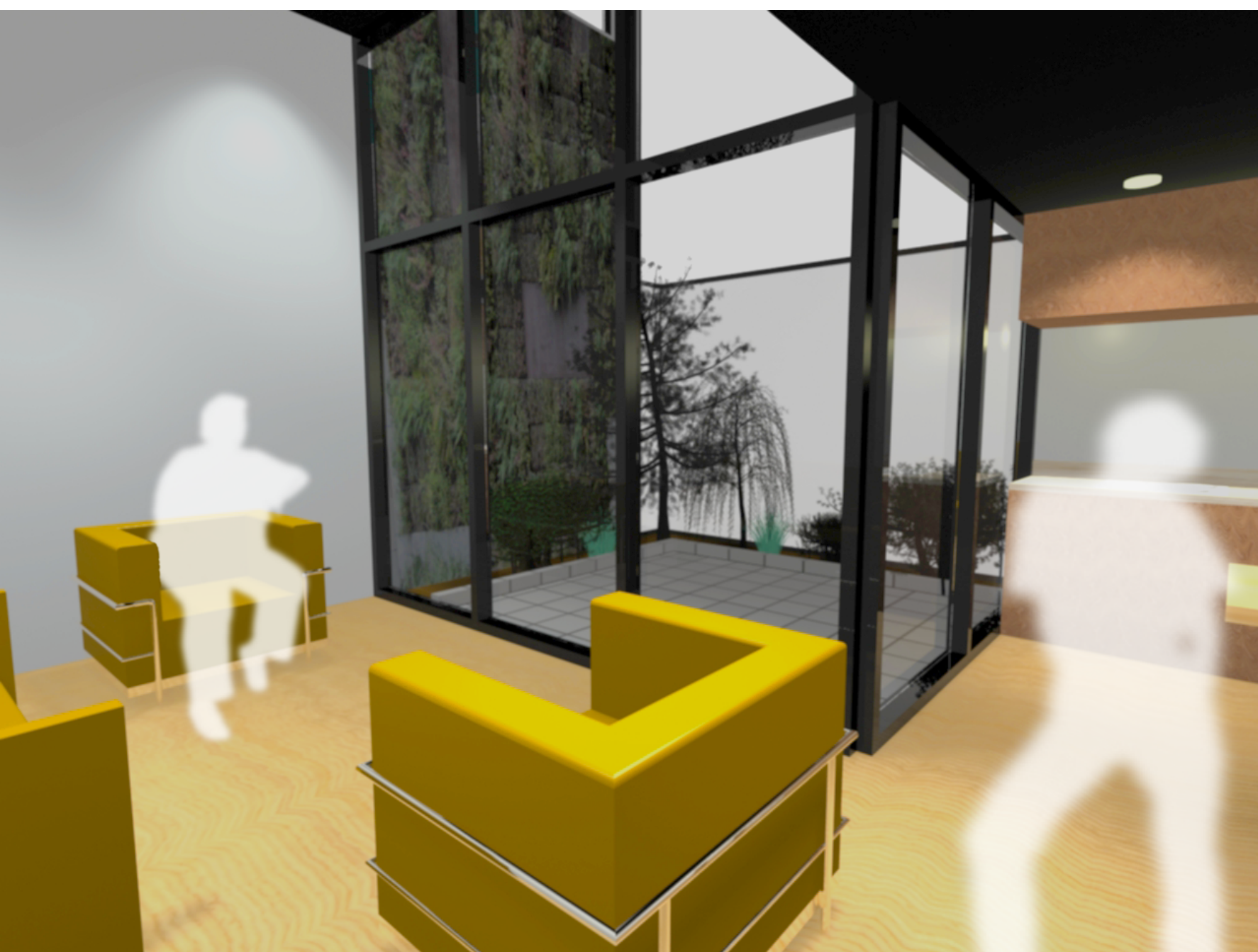
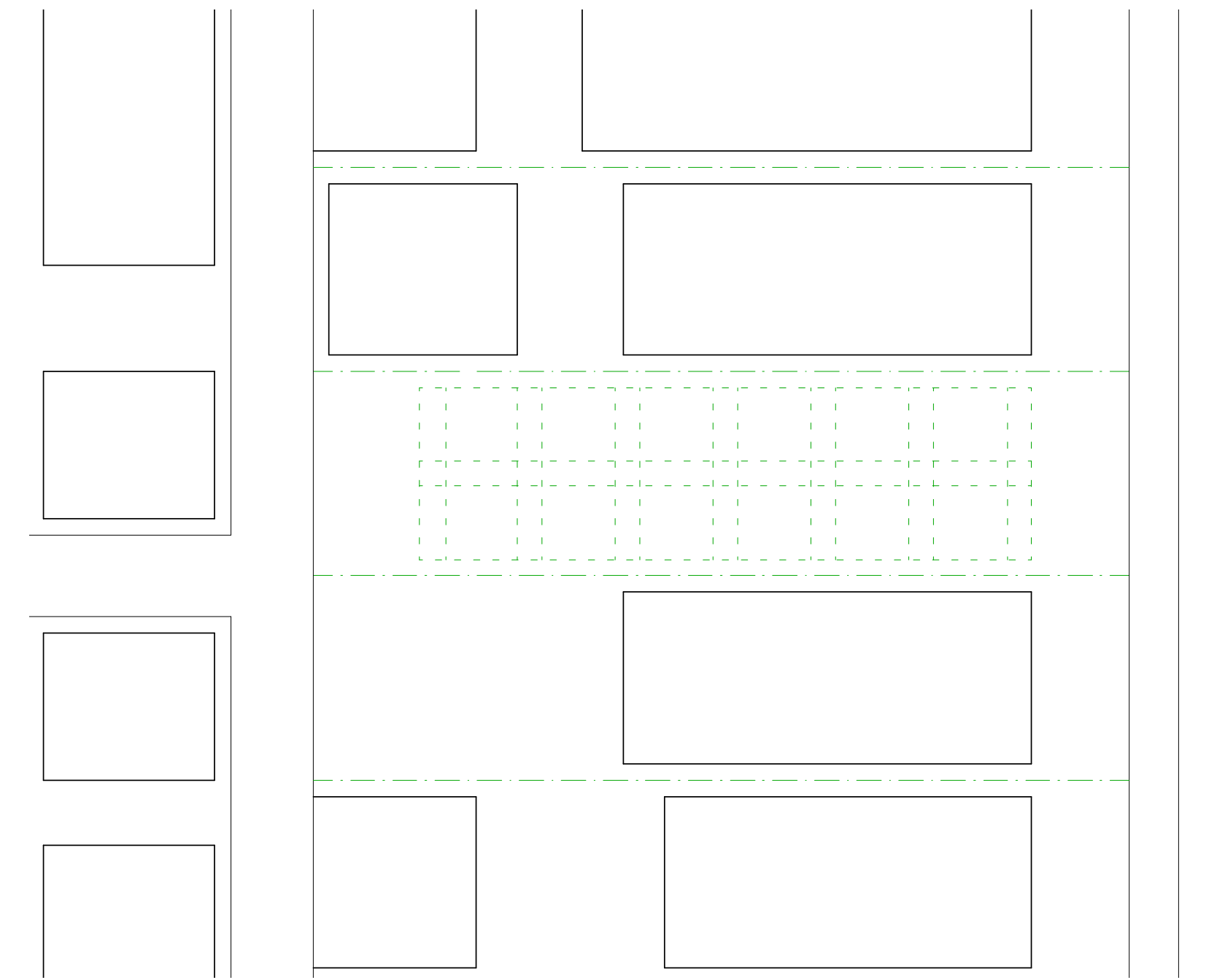


An ergonomic grid system of 3' and 9' was developed to organize the site which could be easily translated onto different lot sizes making the general plan for the house flexible enough to be used on lots of varying dimensions. The construction process is a hybrid between traditional stick built methods and prefabricated elements. Traditional stick built practices have been refined and proven economic. In order to cut down on the scale of on-site delivery, but still take advantage of the precision and efficiency of prefabrication, smaller modules such as kitchens and bathrooms will be fabricated and delivered to the site to be installed with a fork lift, eliminating the need for a crane to install large prefabricated modules.



FLEXIBILITY TO ADAPT TO VARIOUS LOT SIZES



40' WIDE LOT



60' WIDE LOT

