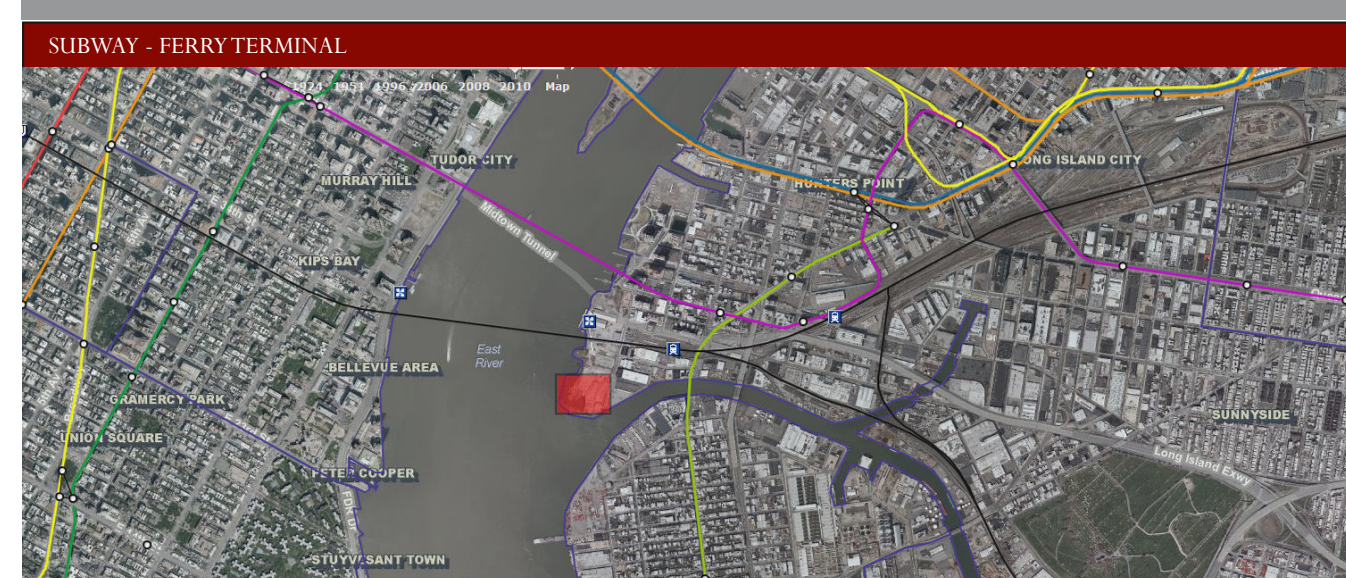
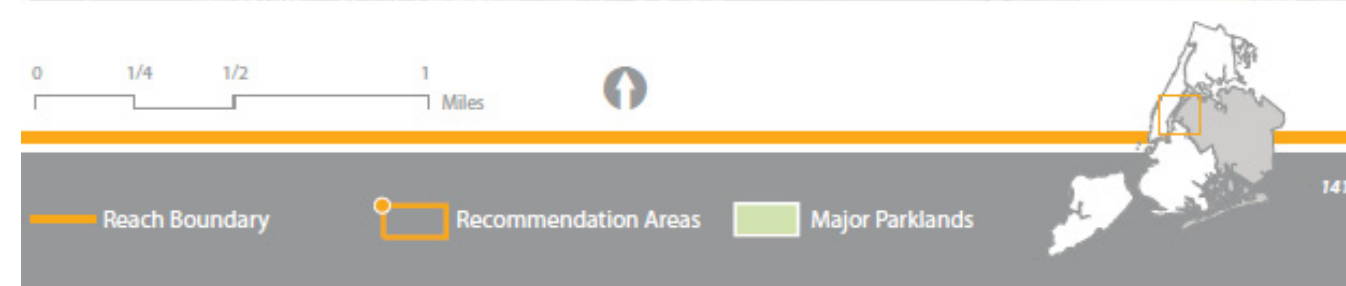


MARINE BIOLOGY RESEARCH CENTER NEW YORK CITY-HUNTER'S SOUTH POINT

SITE ANALYSIS

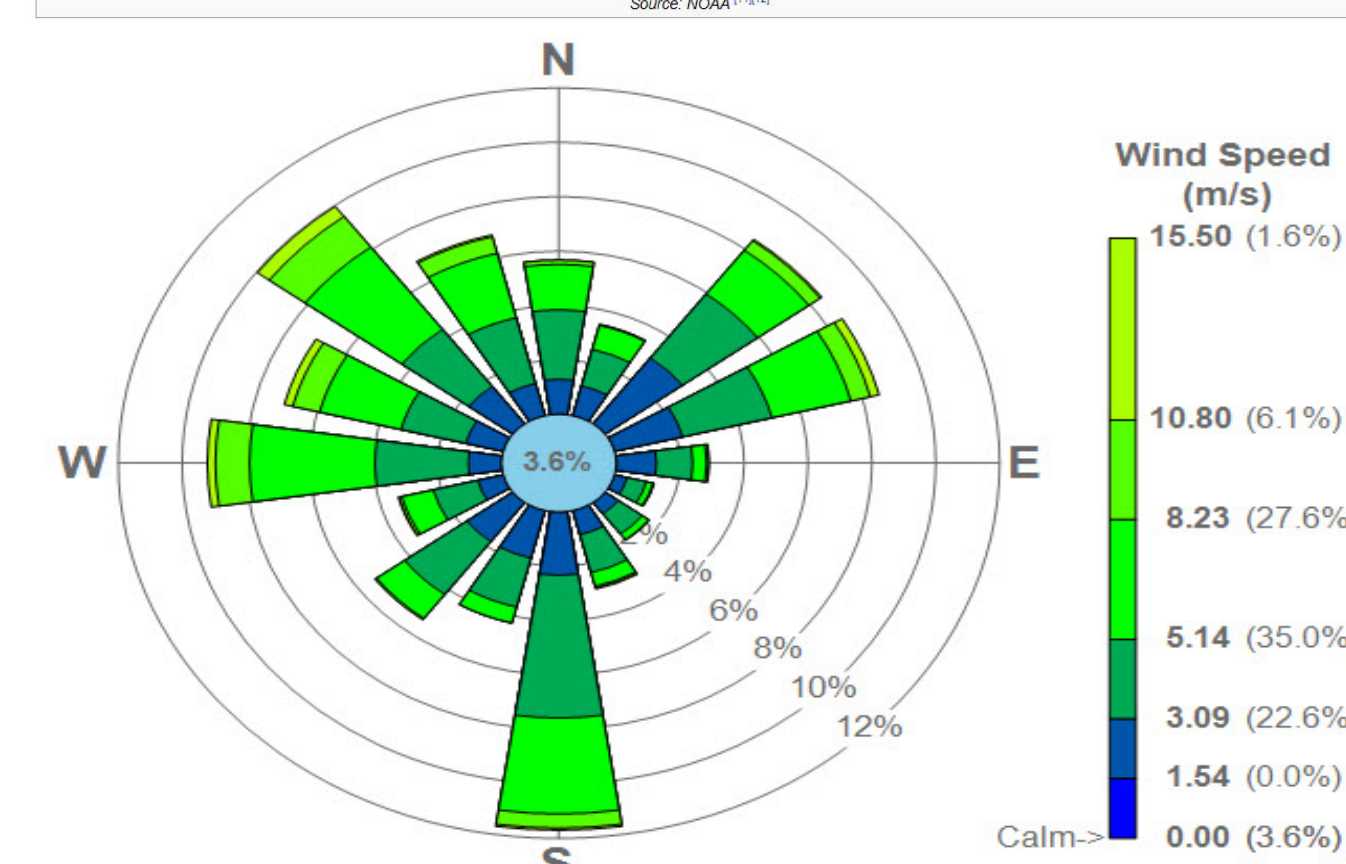


QUEENS COMMUNITY DISTRICT 2



Climate data for New York (Central Park)

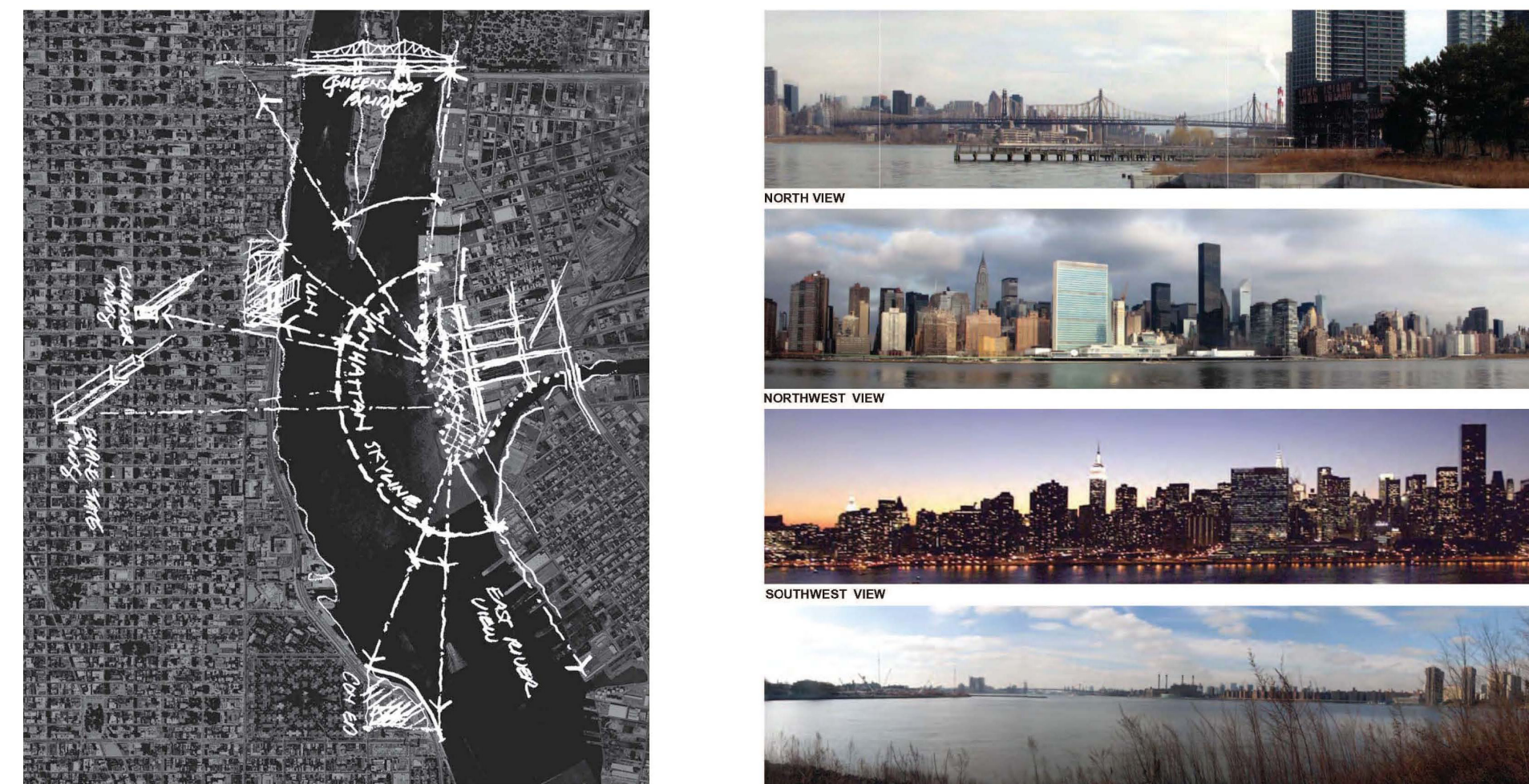
Month	Jan	Feb	Mar	Apr	May	Jun	Jul	Aug	Sep	Oct	Nov	Dec	Year
Record high °F (°C)	75 (24)	82 (28)	90 (32)	97 (36)	104 (40)	111 (45)	118 (48)	124 (51)	130 (54)	136 (58)	141 (61)	146 (64)	150
Average high °F (°C)	38.0 (3.0)	41.0 (5.0)	45.9 (7.2)	52.1 (11.2)	59.5 (15.3)	67.2 (19.5)	73.1 (22.8)	77.6 (25.8)	80.4 (27.4)	81.1 (27.8)	77.6 (25.8)	69.4 (21.3)	61.9
Average low °F (°C)	-3.2 (-23.2)	0.1 (-17.7)	3.1 (17.5)	6.2 (43.2)	11.1 (51.8)	16.1 (60.8)	20.9 (69.6)	24.6 (76.3)	26.4 (79.5)	25.9 (78.6)	21.3 (60.3)	13.9 (56.8)	10.2
Record low °F (°C)	-23.0 (-30.8)	-18.0 (-7.8)	-11.1 (-11.8)	-2.2 (27.9)	7.1 (44.8)	14.1 (57.4)	19.1 (66.4)	22.9 (73.2)	24.6 (76.3)	22.9 (73.2)	16.1 (60.8)	7.1 (44.8)	0.0
Precipitation inches (mm)	4.0 (101.6)	3.9 (99.1)	3.8 (96.5)	3.7 (94.0)	3.6 (91.4)	3.5 (88.9)	3.4 (86.3)	3.3 (84.8)	3.2 (81.3)	3.1 (78.7)	3.0 (76.2)	2.9 (73.7)	3.2
Snowfall inches (cm)	31.1 (793)	28.1 (714)	24.1 (612)	18.1 (457)	11.1 (281)	6.1 (155)	3.1 (79)	1.1 (28)	0.1 (2.5)	0.1 (2.5)	0.1 (2.5)	0.1 (2.5)	10.2
% Humidity	63.1	60.0	62.3	66.3	69.4	71.7	73.2	74.7	71.6	68.3	64.4	60.0	63.2
Avg. precipitation days (≥ 0.01 in)	16.2	15.1	14.1	12.1	10.1	8.1	6.1	5.1	4.1	3.1	2.1	1.1	10.2
Avg. snowy days (≥ 1 in)	4.1	3.1	1.6	0	0	0	0	0	0	0	0	0	10.2
Sunshine hours	162.7	166.1	210.0	228.6	266.4	297.9	262.2	208.2	179.3	111.2	65.0	19.0	1,534



HISTORY OF SITE



VIEWS FROM SITE



SITE VIEWS FROM NEARBY CONTEXT

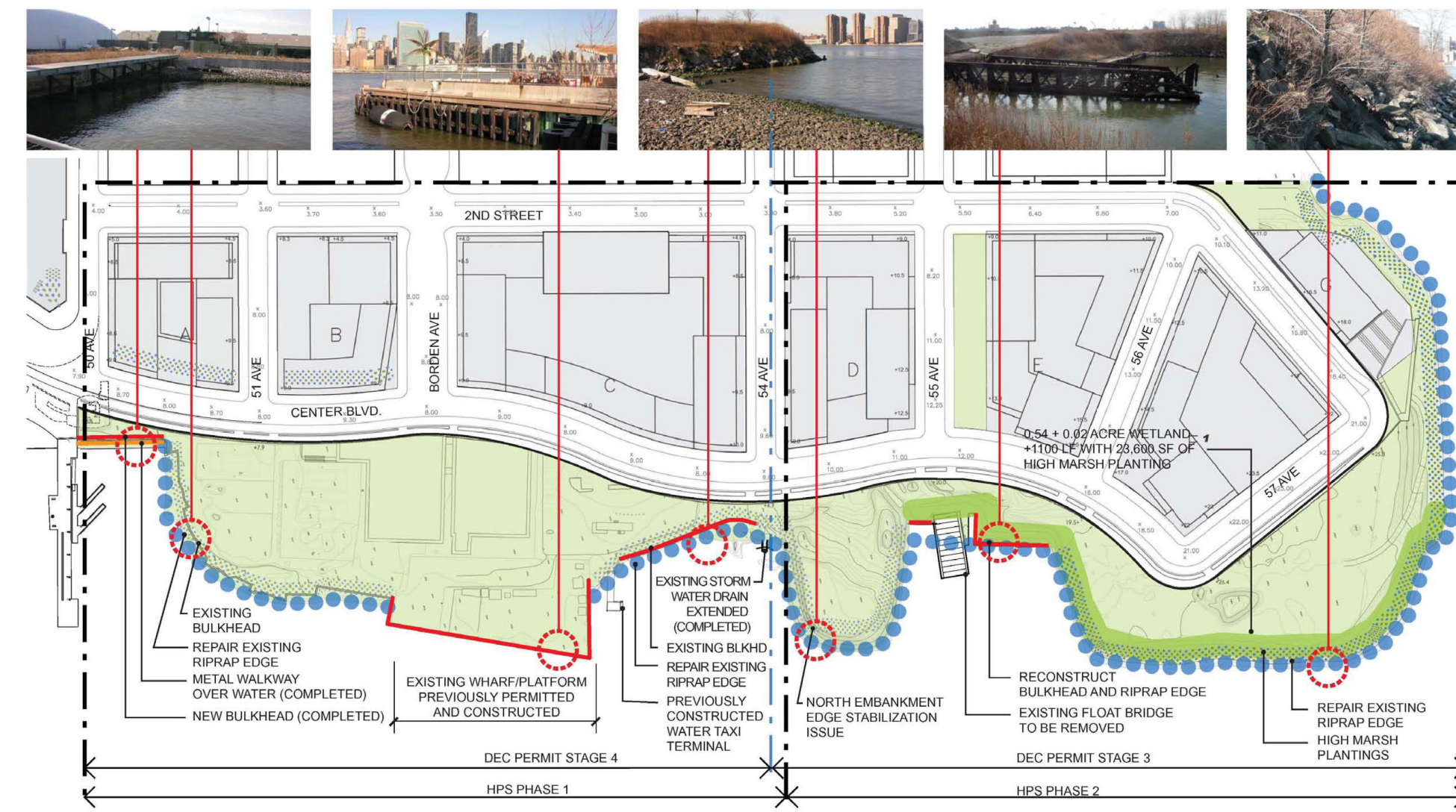


HUNTER'S POINT SOUTH: EXISTING CONDITION

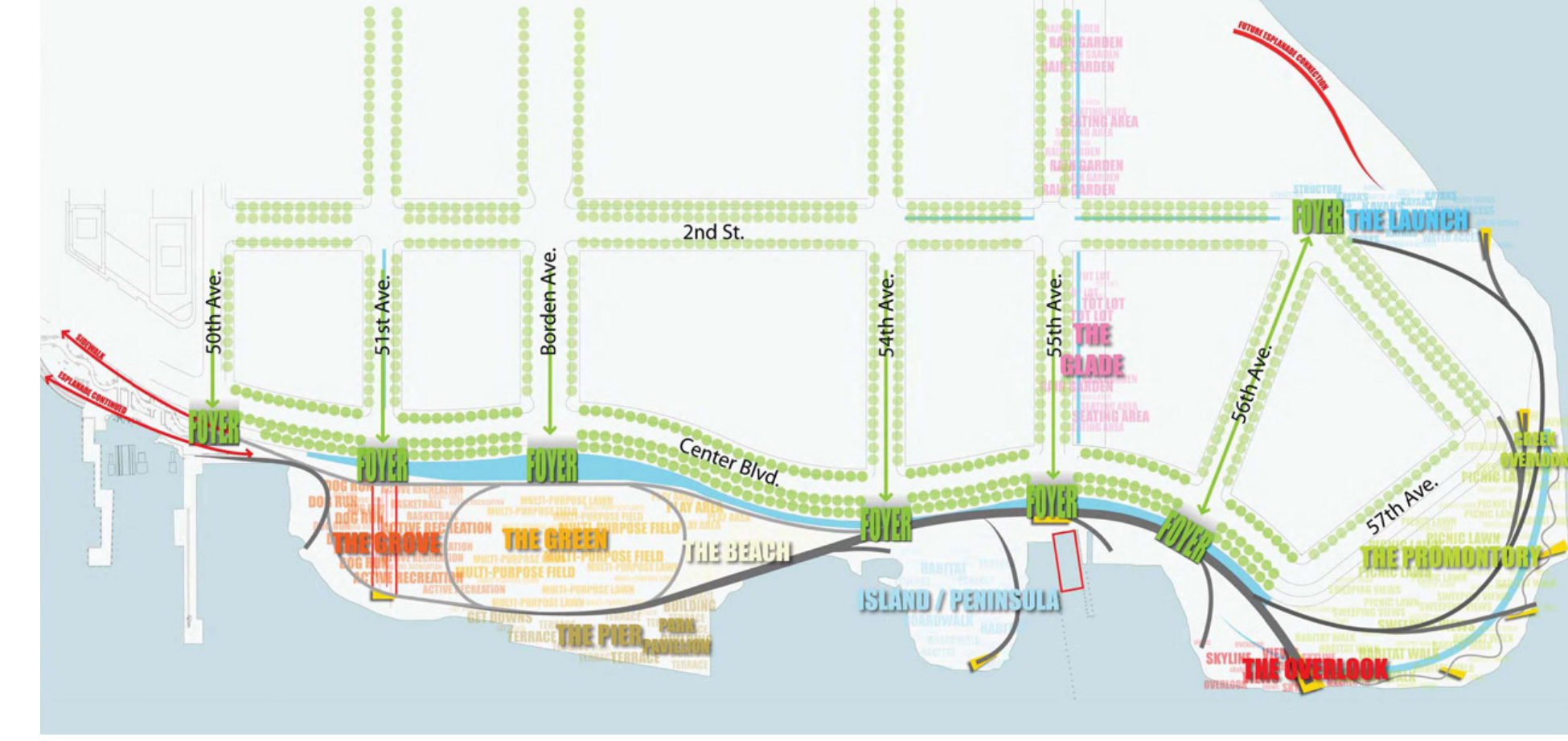
- + LARGELY VACANT WATERFRONT SITE
- + WITHIN WALKING DISTANCE 7 SUBWAY LINE WITH ONE STOP TO MIDTOWN MANHATTAN AND ON SITE ACCESS TO FERRY SERVICE TO MIDTOWN
- + ADJACENT TO DYNAMIC QUEENS WEST & LIC COMMERCIAL CORRIDOR



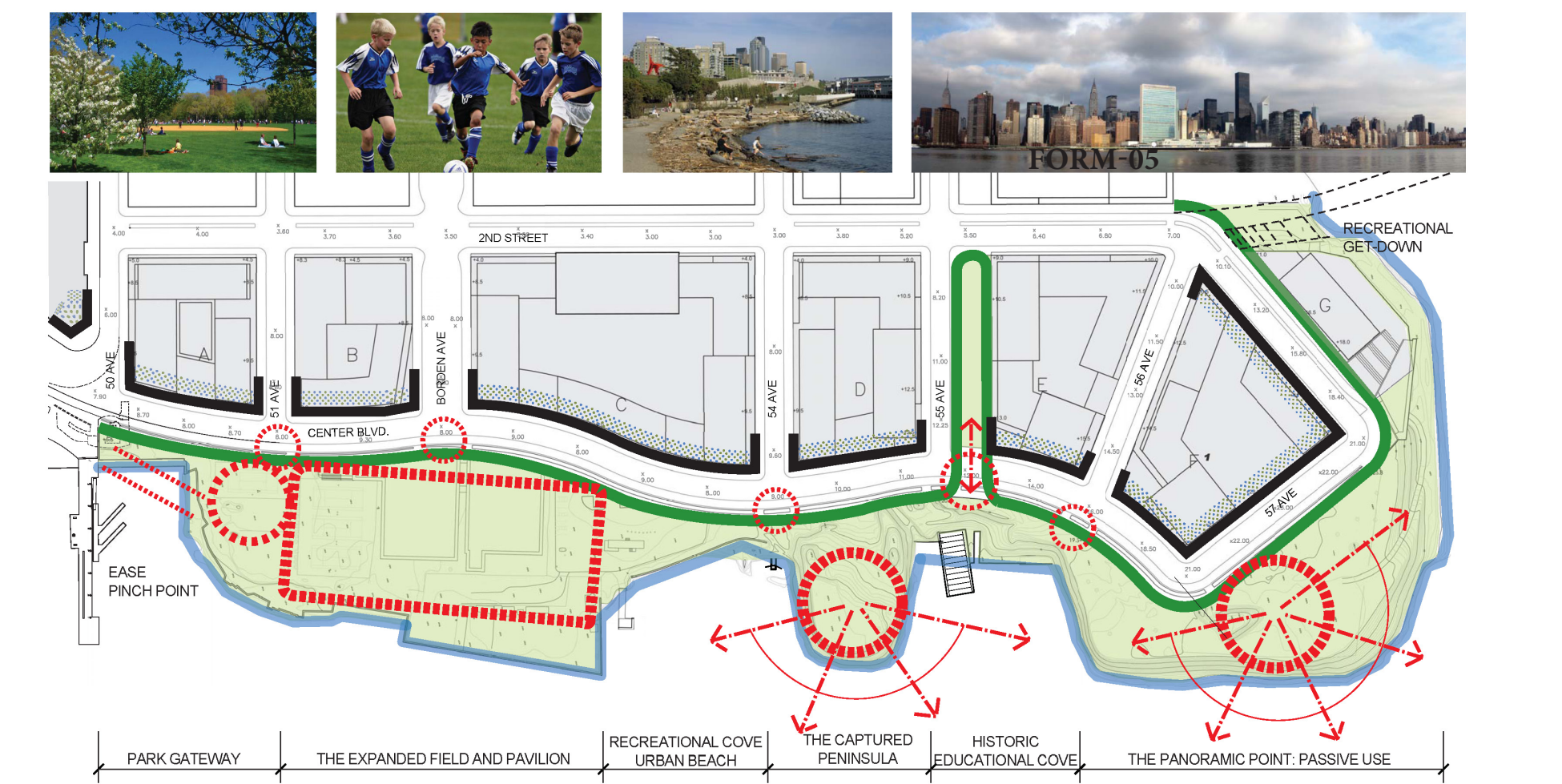
WATERFRONT PARK CONCEPT



CONNECTIONS



*Arup, Thomas Babbley Associates, Weiss, Manfredi
http://www.nyc.gov.com/project/hunters-point-south



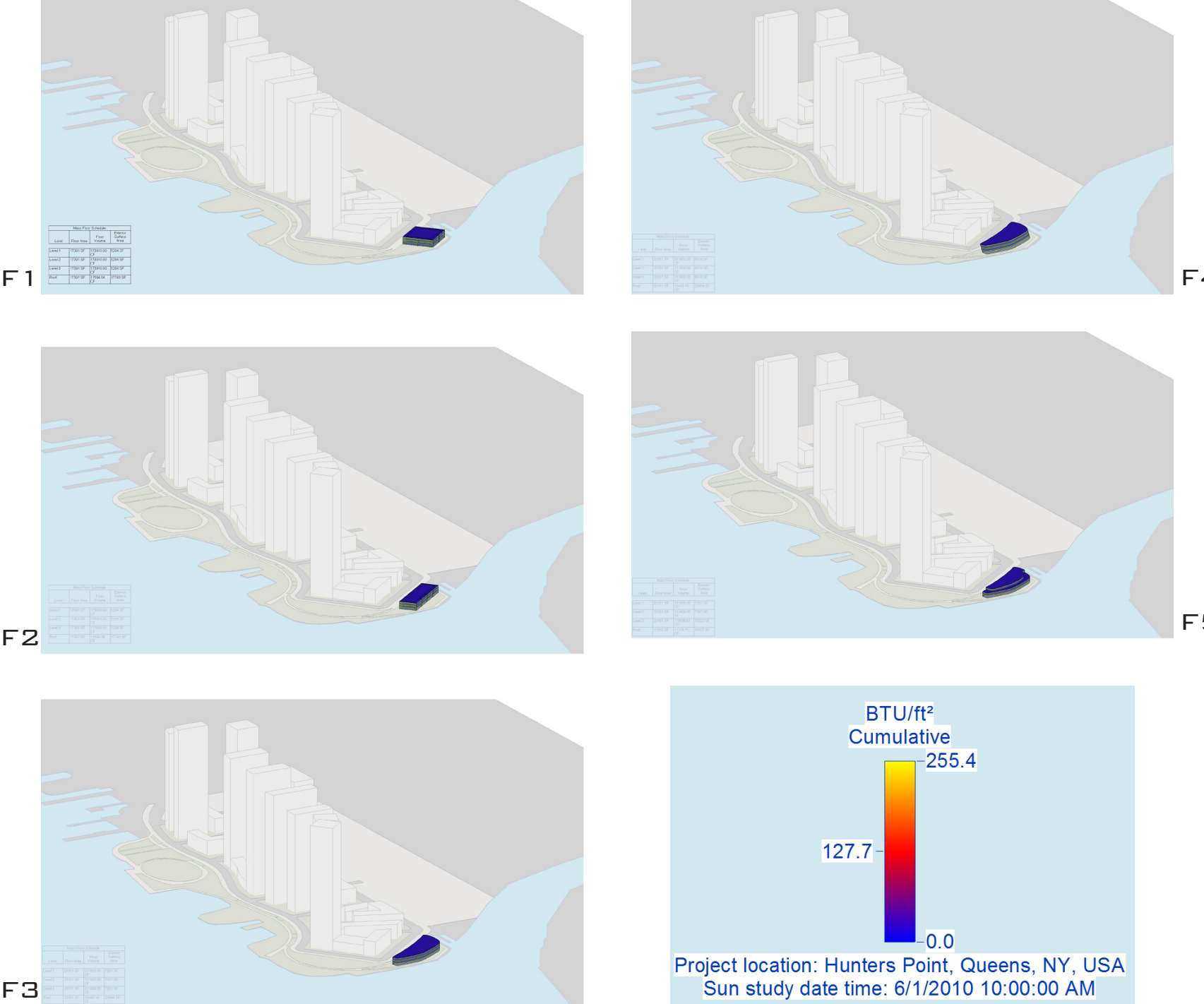
PROPOSED PROJECT TO NYCEDC



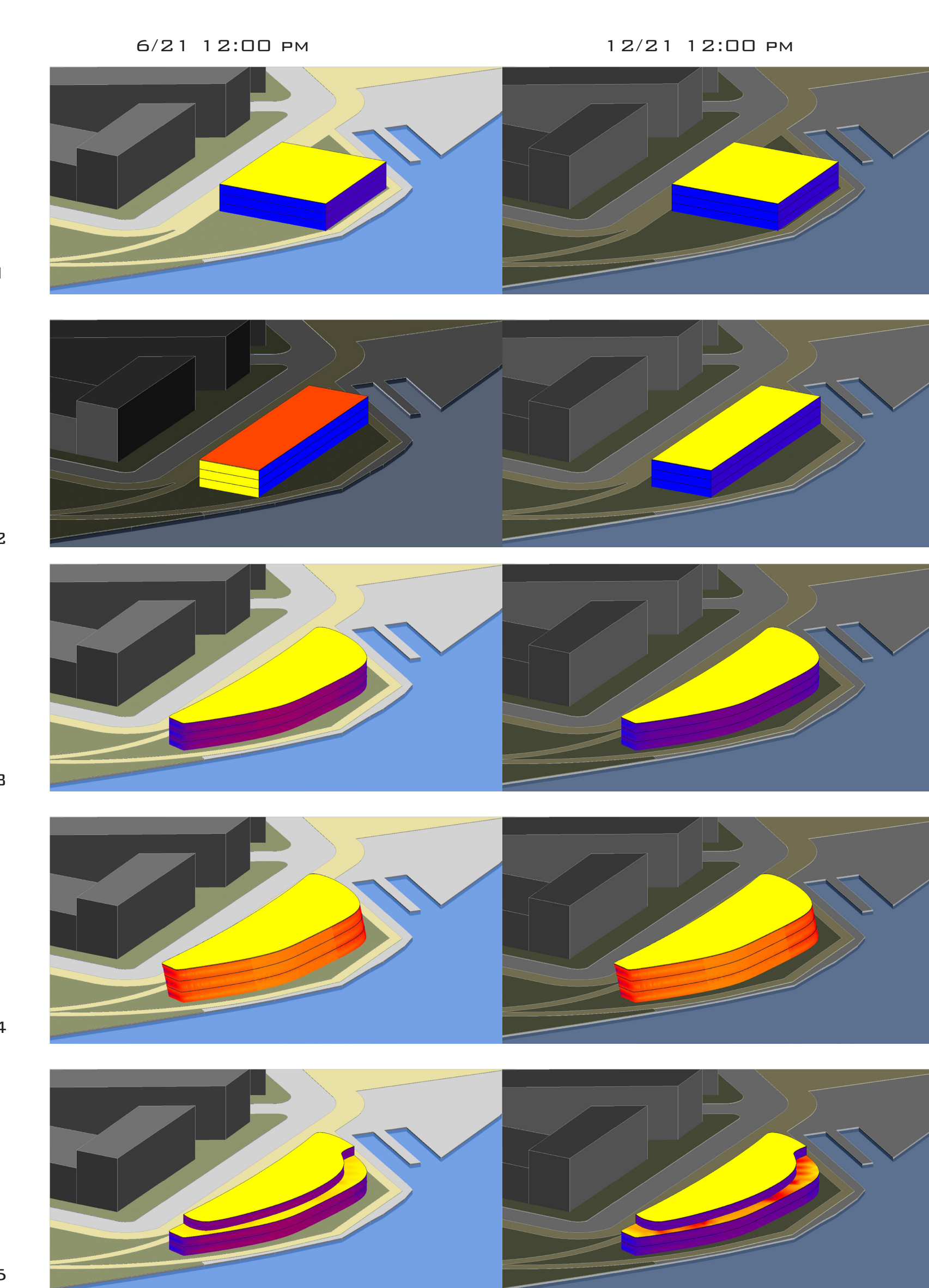
THIS IS PROPOSED PROJECT FOR HUNTER'S POINT SOUTH. IT IS MIXED-USED, MIDDLE-INCOME HOUSING DEVELOPMENT SITUATED ON APPROXIMATELY 30 ACRES OF PRIME WATERFRONT PROPERTY IN LONG ISLAND CITY, QUEENS 2007. MY RESEARCH BIOLOGY CENTER IS GOING TO BE PART OF THIS MASTER PLAN. THE BEST LOCATION IS ON THE SOUTH POINT OF THE SITE HIGHLIGHTED IN RED.

ENERGY CONSIDERATIONS

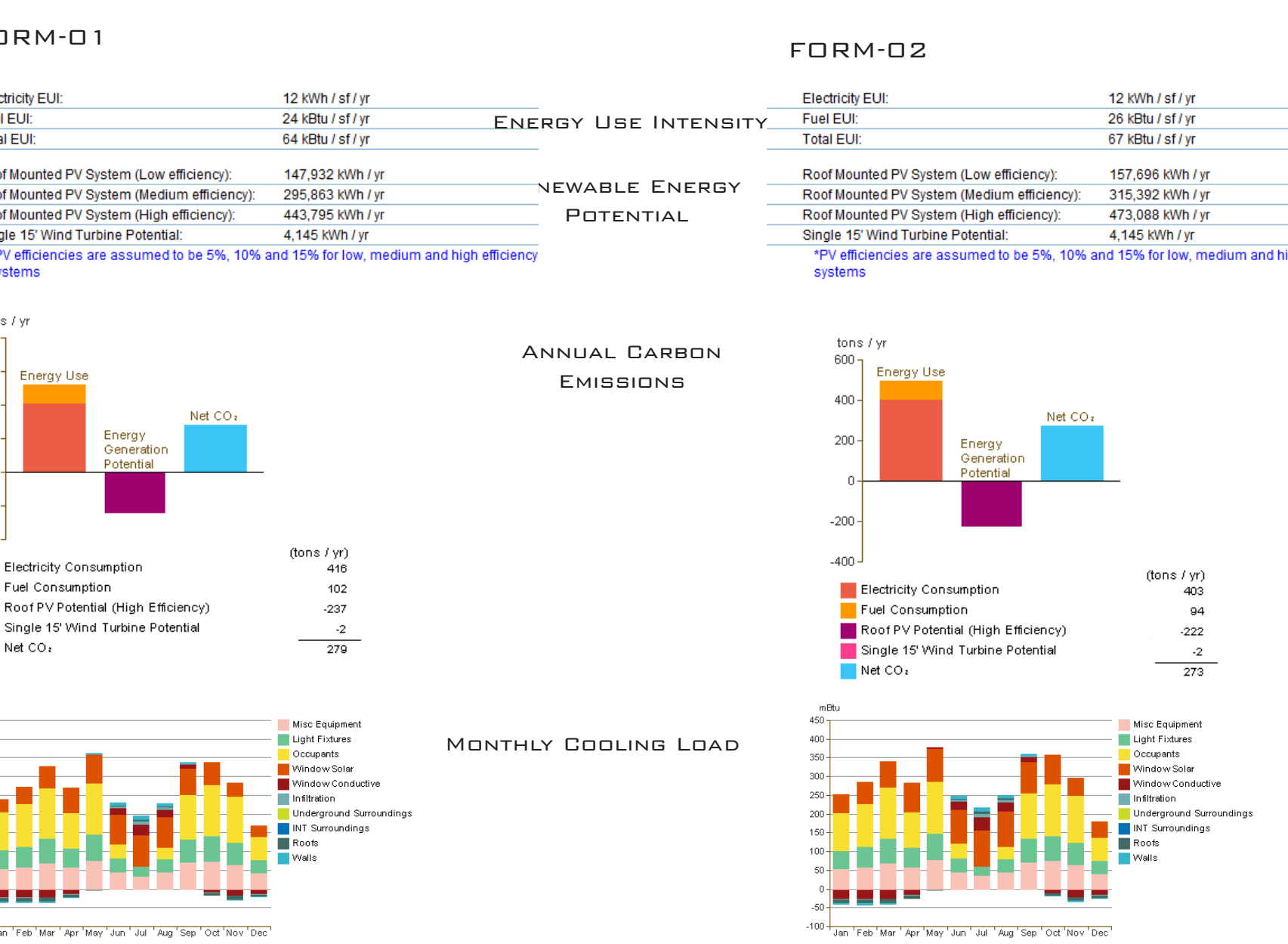
INITIALLY 5 DIFFERENT FORMS DECIDED TO ANALYSE INTERMS OF SOLAR RADIATION AND ENERGY EFFICIENCY OF FORM. FORM 4 WAS DECIDED SINCE THE MOST IT IS EFFICIENT ONE



SOLAR RADIATION ANALYSIS



ENERGY ANALYSIS COMPARISON



MARINE BIOLOGY RESEARCH CENTER

NEW YORK CITY-HUNTER'S SOUTH POINT

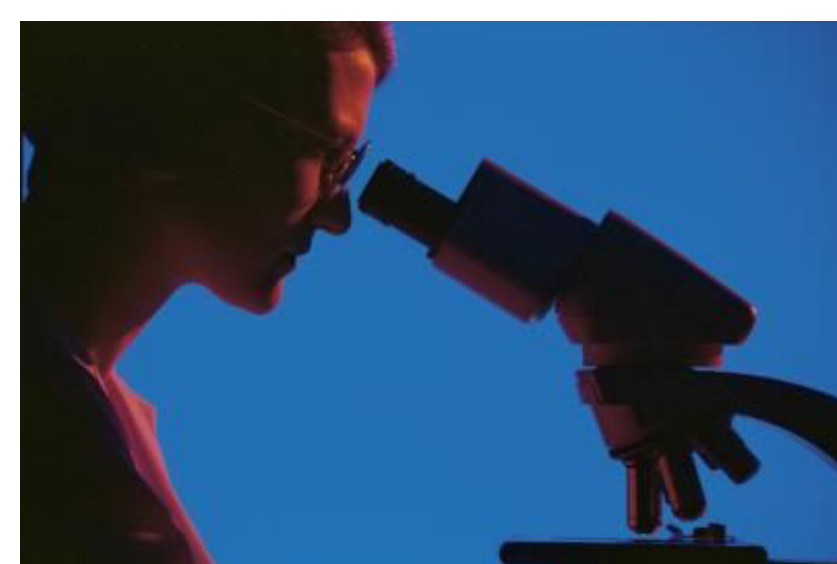
LIBRARY OF LOCAL FAUNA AND FLORA

- | | | |
|----------------|---|---------------------------------|
| PUBLIC | ACADEMIC | ENVIRONMENTAL MONITORING |
| CONFERENCES | COLLECTION/LIBRARY OF LOCAL FLORA AND FAUNA | REMOTE OPERATION CONTROL |
| SEA WORLD | RESEARCHES | MEDIA PRODUCTION CENTER |
| SEA FOOD | FISH BIOLOGY | |
| FISH CATCHING | MARINE ENVIRONMENT | |
| SCUBA DIVING | ECOLOGY OF ENDANGERED SPECIES | |
| | MOLECULAR BIOLOGY AND GENETIC | |
| DISPLAY | UNDERWATER COMMUNICATION | |
| OBSERVATION | AQUACULTURE | |

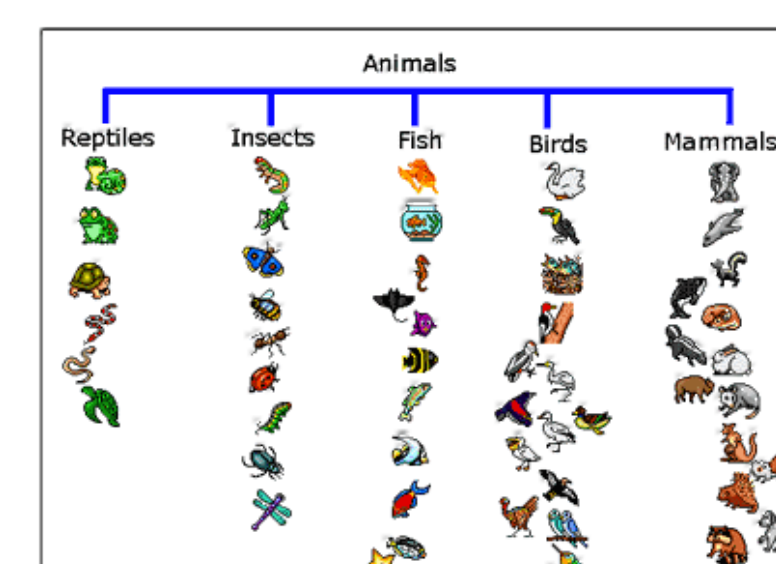
ACTIVITIES



COLLECT



RESEARCH



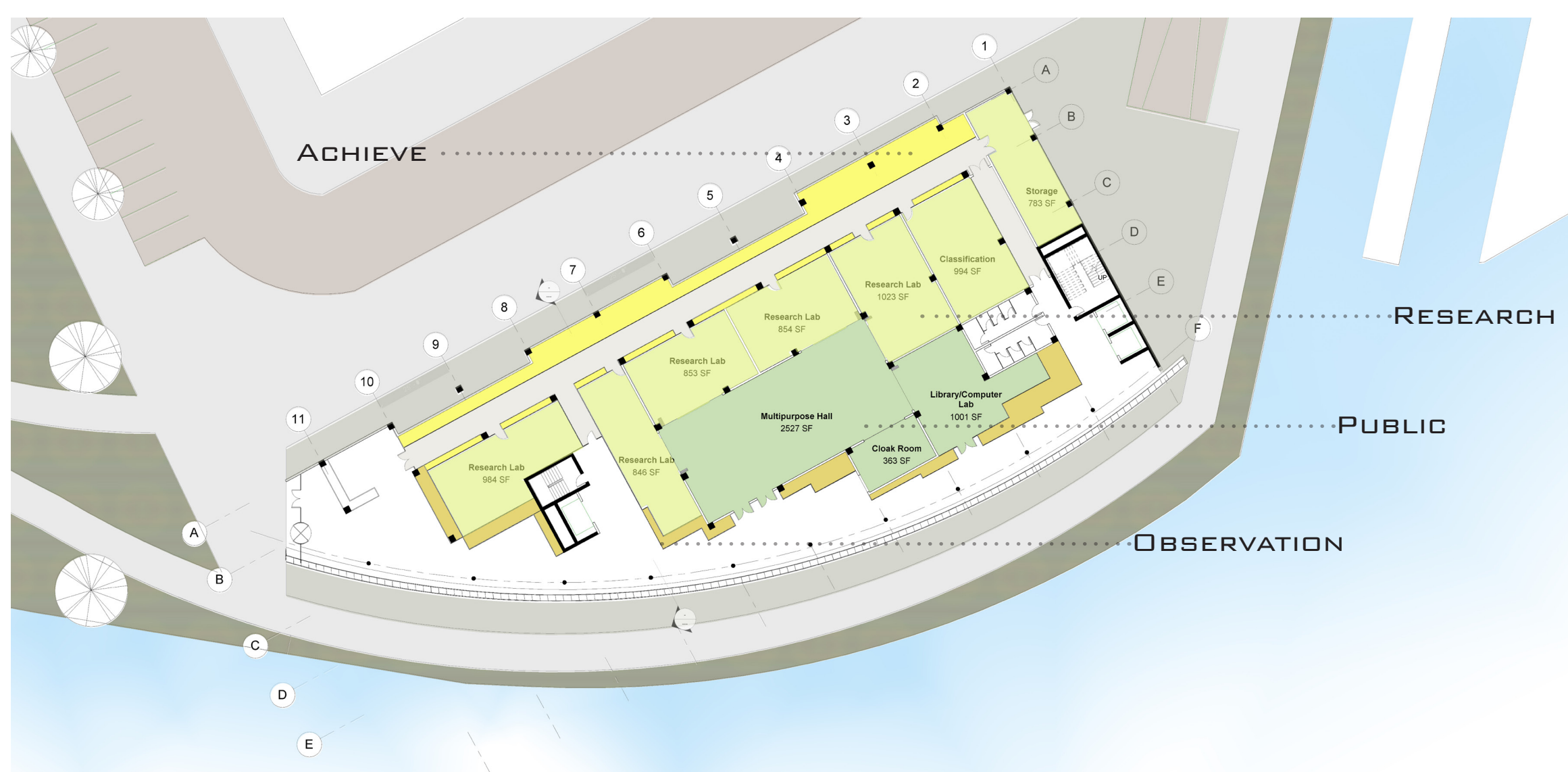
CLASSIFY



ARCHIVE



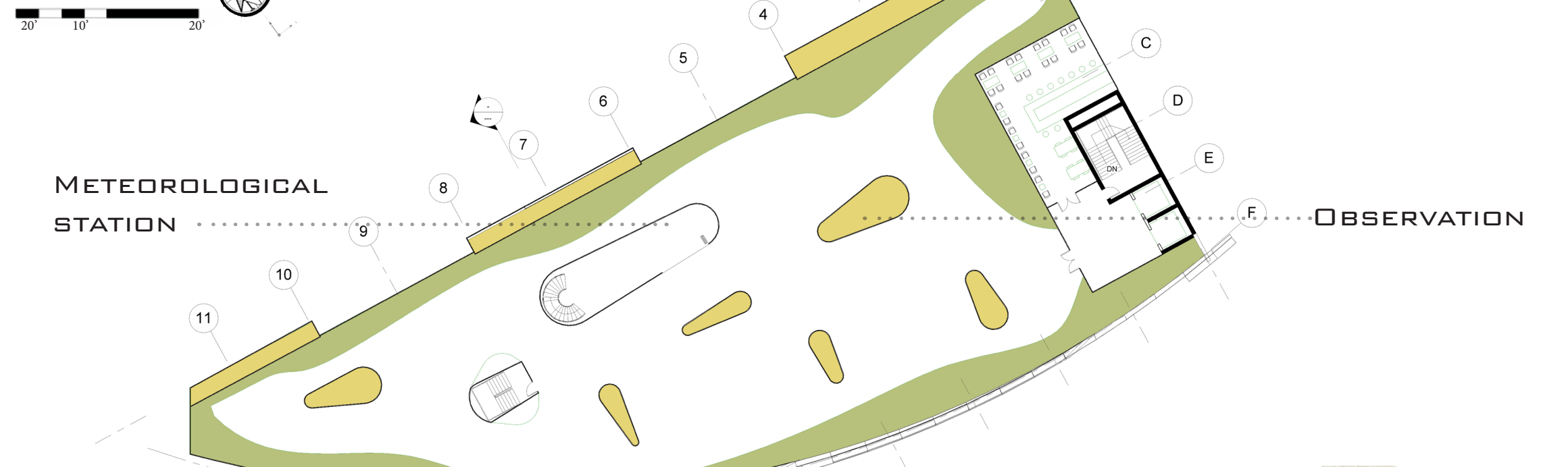
EXHIBIT



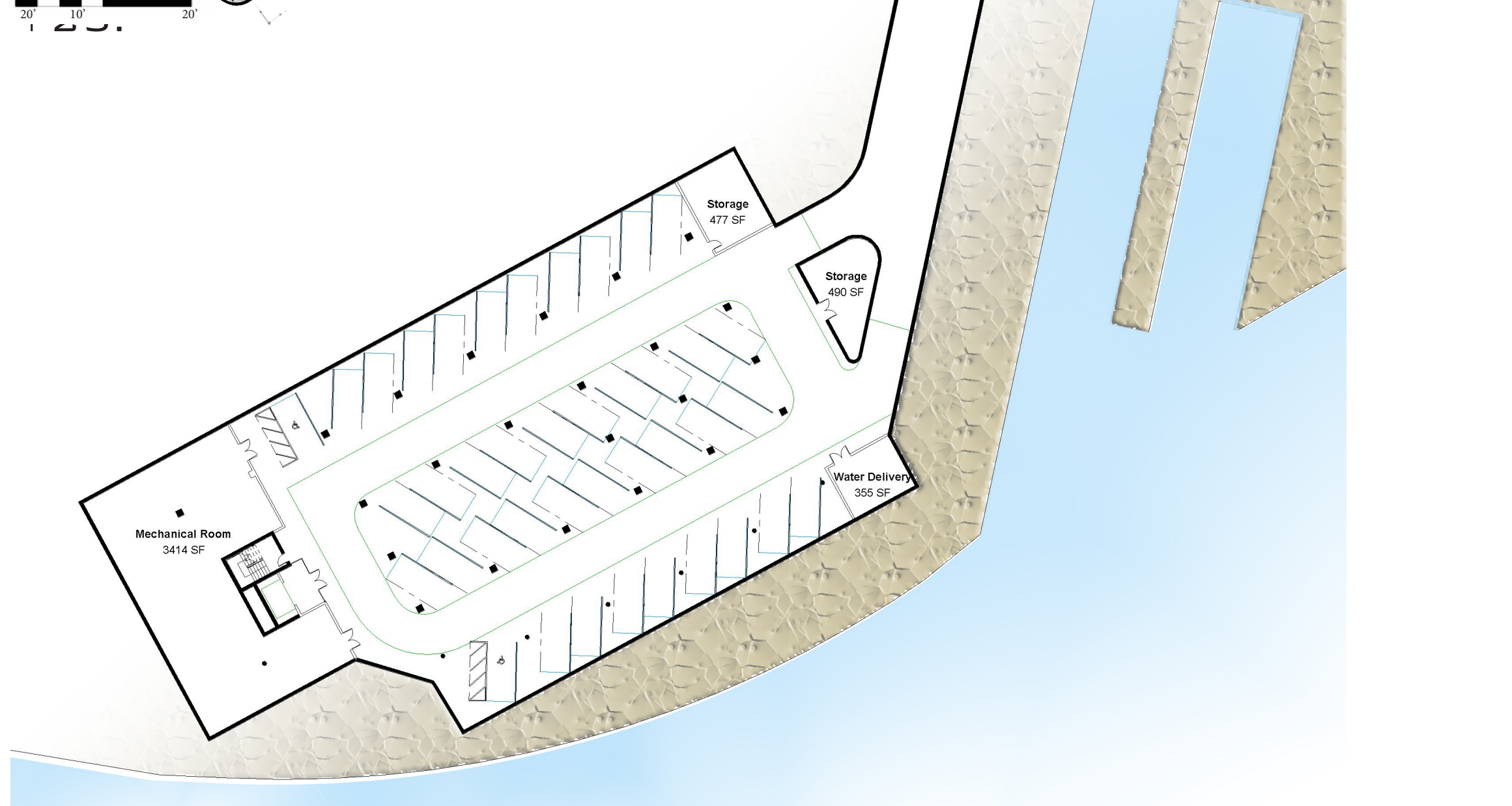
LEVEL 1



LEVEL 2



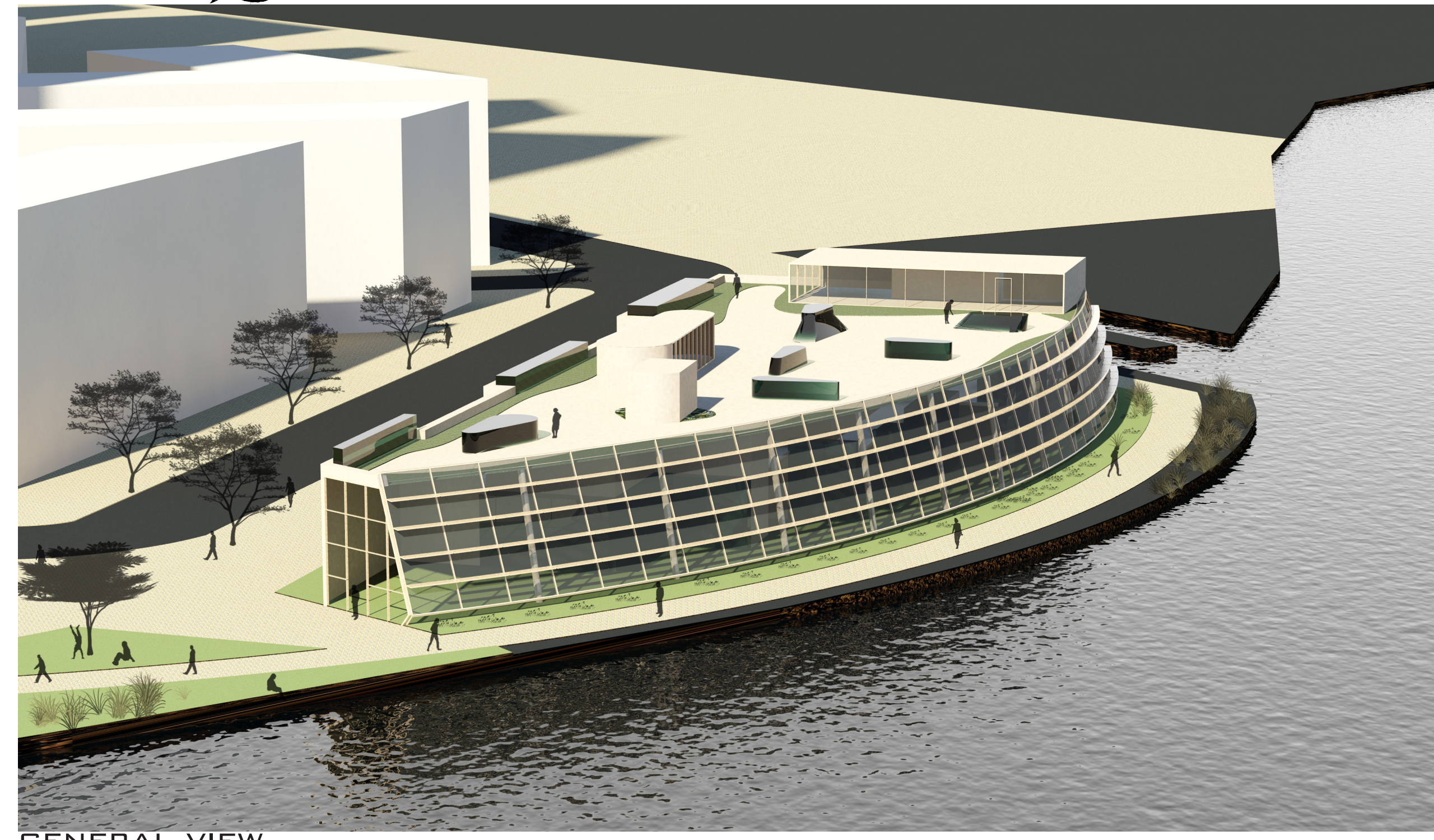
ROOF



BASEMENT



SITE PLAN



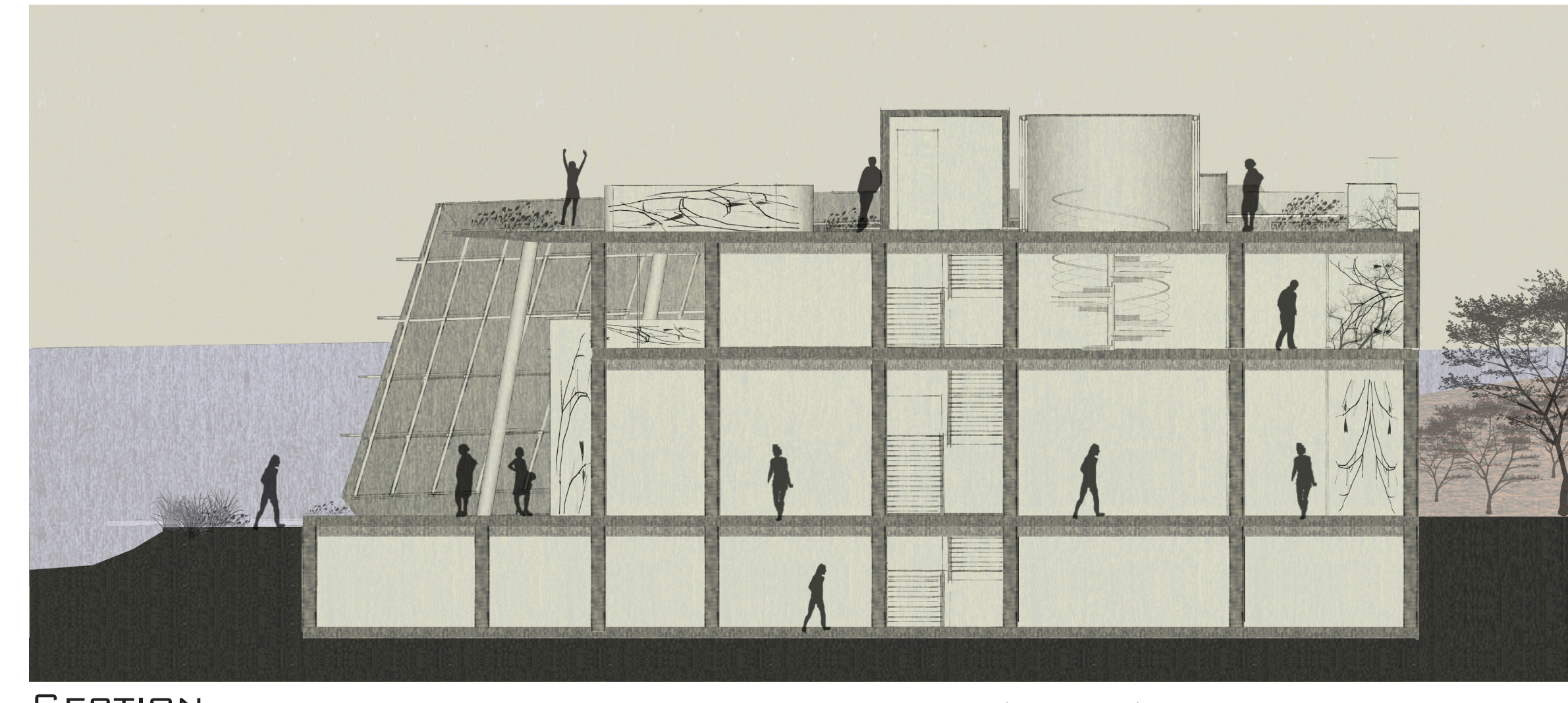
GENERAL VIEW



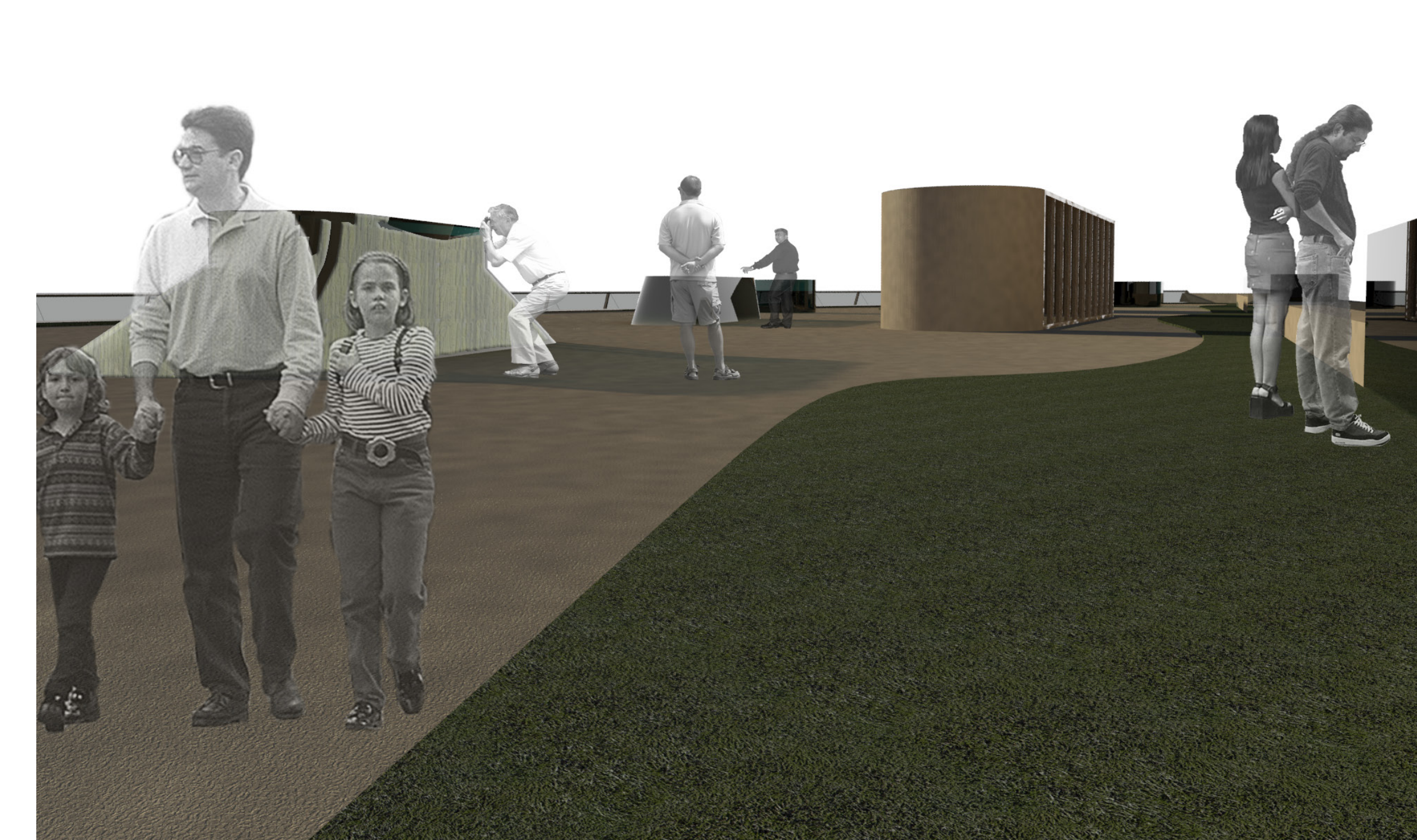
SOUTH FACADE



SITE INTEGRATION CONTINUATION OF PARKING SYSTEM OBSERVATION/DESTINATION/ACTIVITIES



SECTION LEFT TO RIGHT ORGANIZATION IS PUBLIC TO PRIVATE OBSERVATION/RESEARCH/ARCHIVE



ROOF TERRACE _ OBSERVATION SPACES FROM THE BUILDING CONTINUE ON THE ROOF