

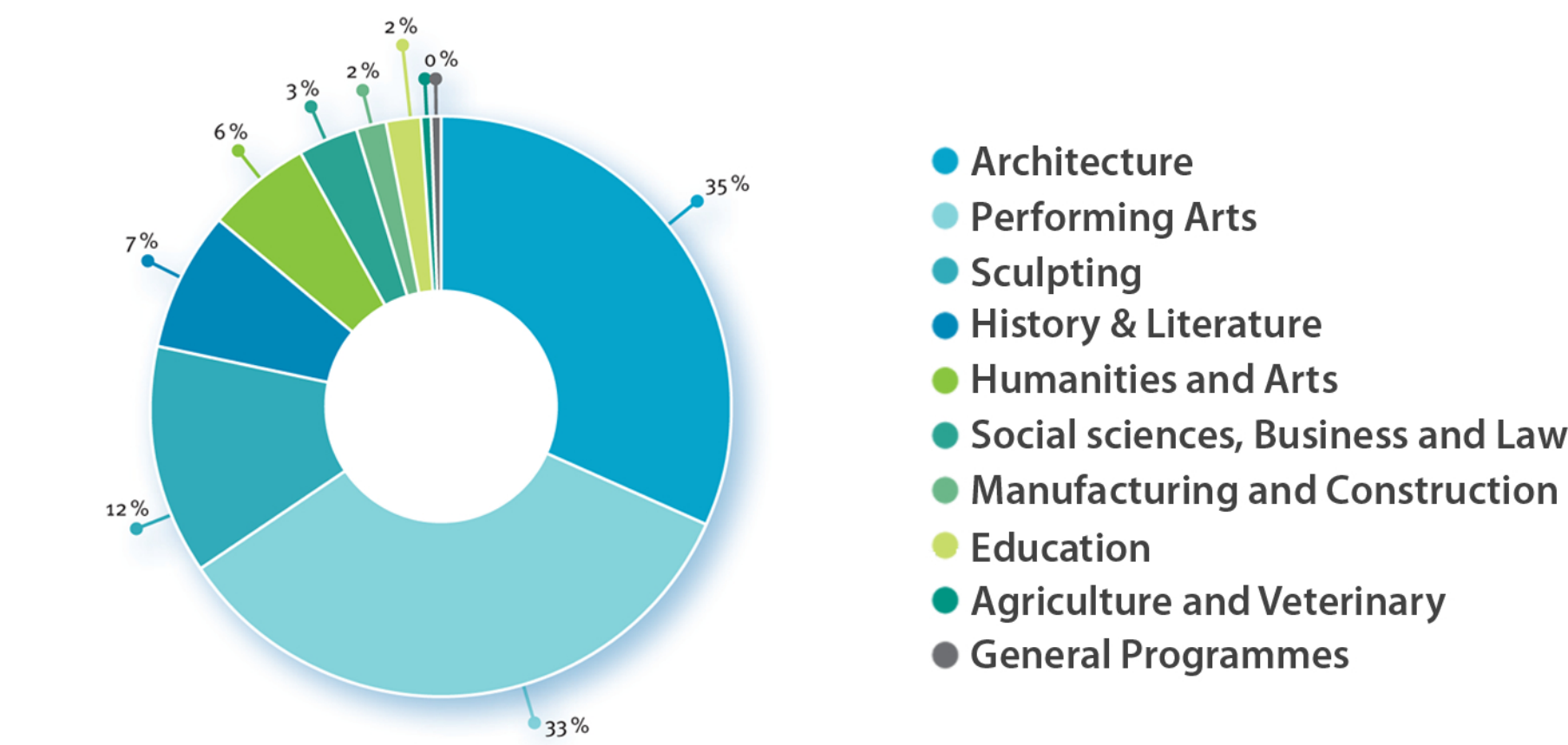
# BRIDGING CULTURES

INTERCULTURAL ERASMUS PROGRAM STUDENT ACCOMMODATIONS

“An urban center for supporting the lives and celebrating the cultures of both local and visiting exchange students of EU’s Erasmus Student Network (ESN) in Istanbul, Turkey.”

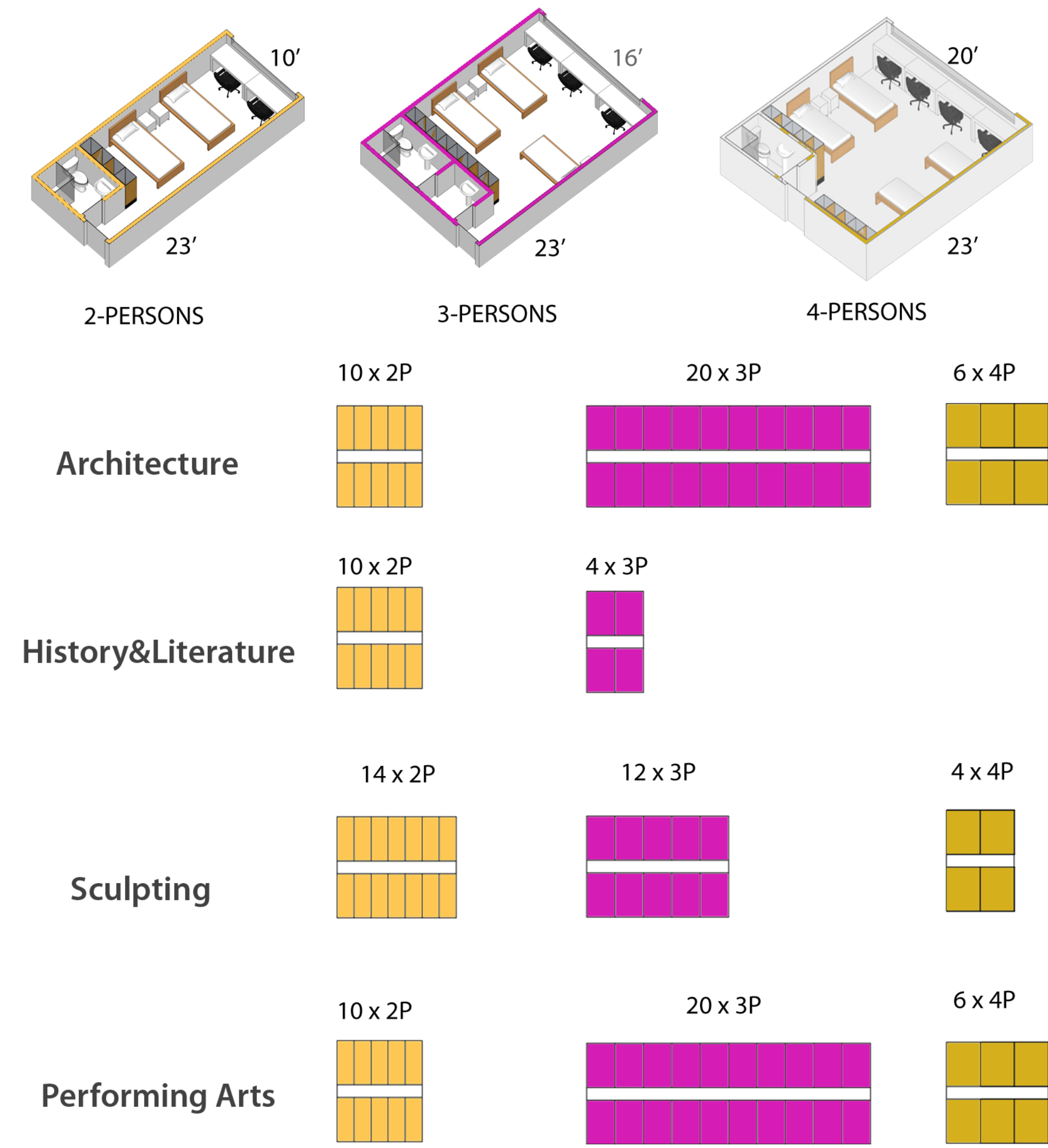
ESN is of the biggest non-profit interdisciplinary student associations in Europe, founded in 1989 by EU for supporting and developind student ex-change. ESN presents in 358 universities from 35 countries.

On the other hans, the ESN DOES NOT provide space to accommodate stu-dents in their programs.



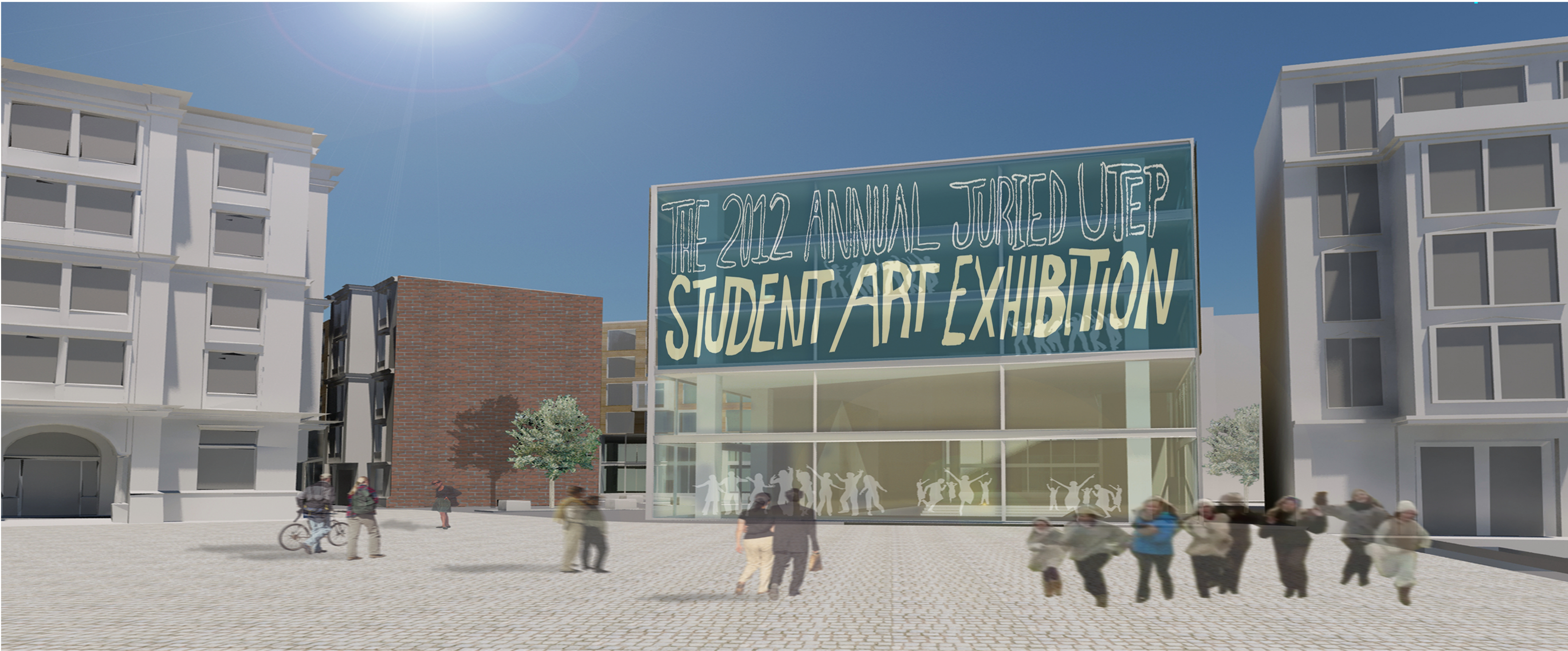
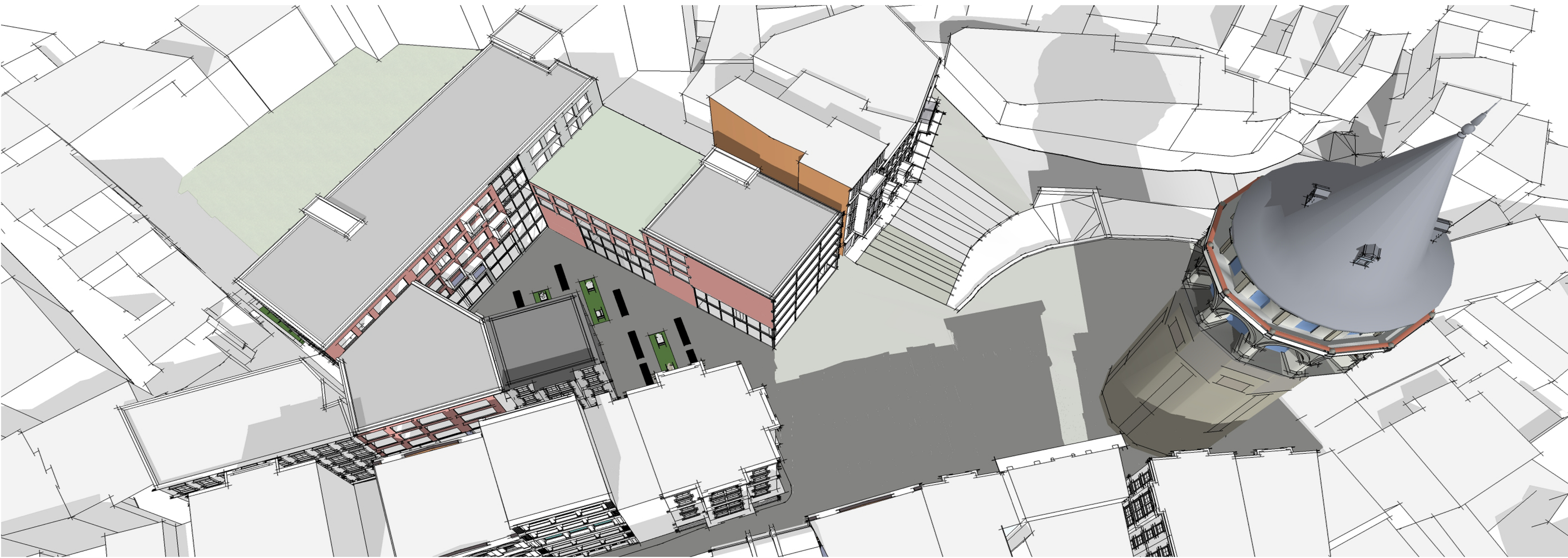
Share of subject areas in mobility studies in Istanbul, Turkey.

“The aim is to engage students and local people by intercultural interactions. Thereby, the program structure will be broken down to two categories: individual and open-public spaces.”

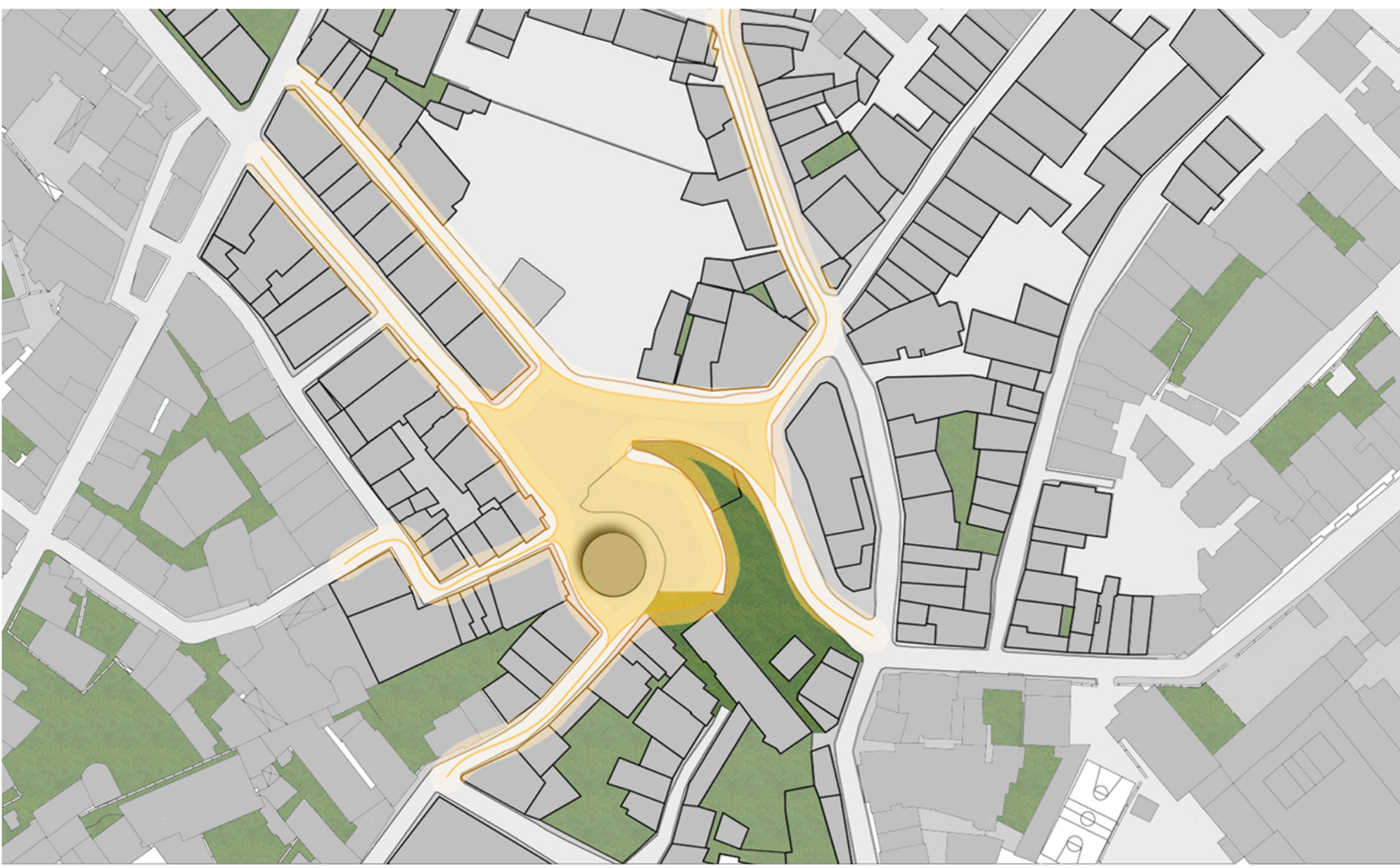


Modulated private student room types and quantities.

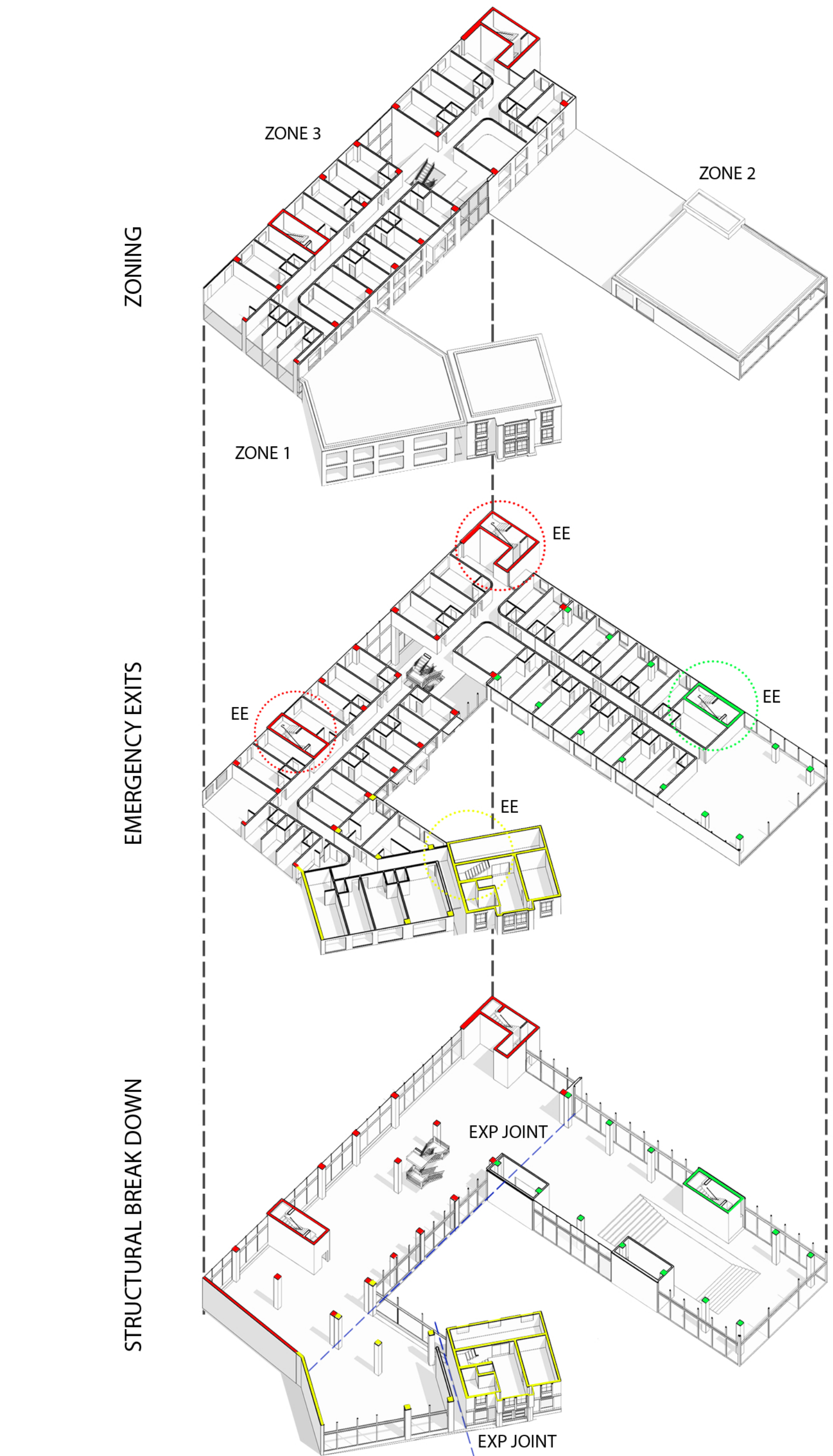
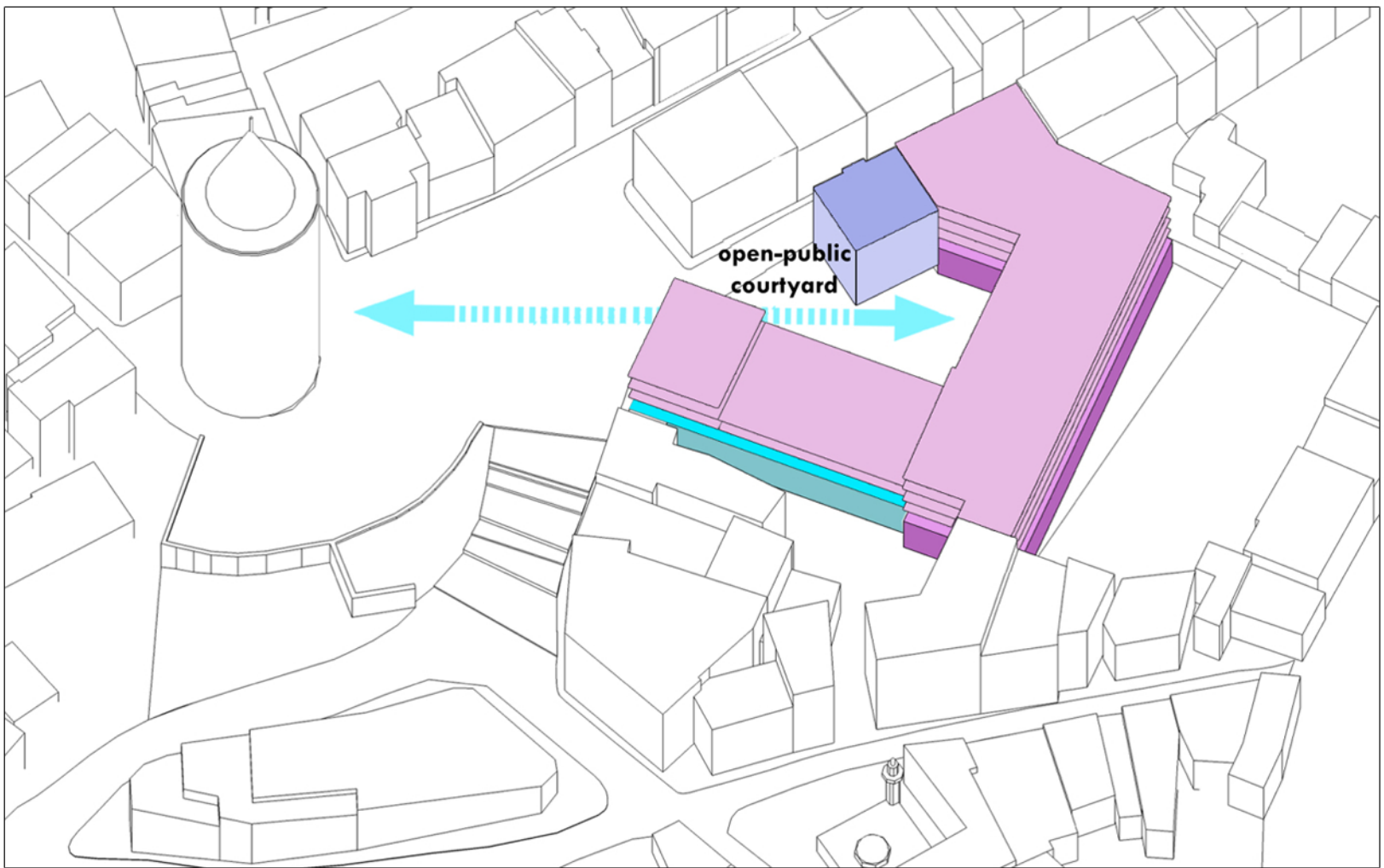
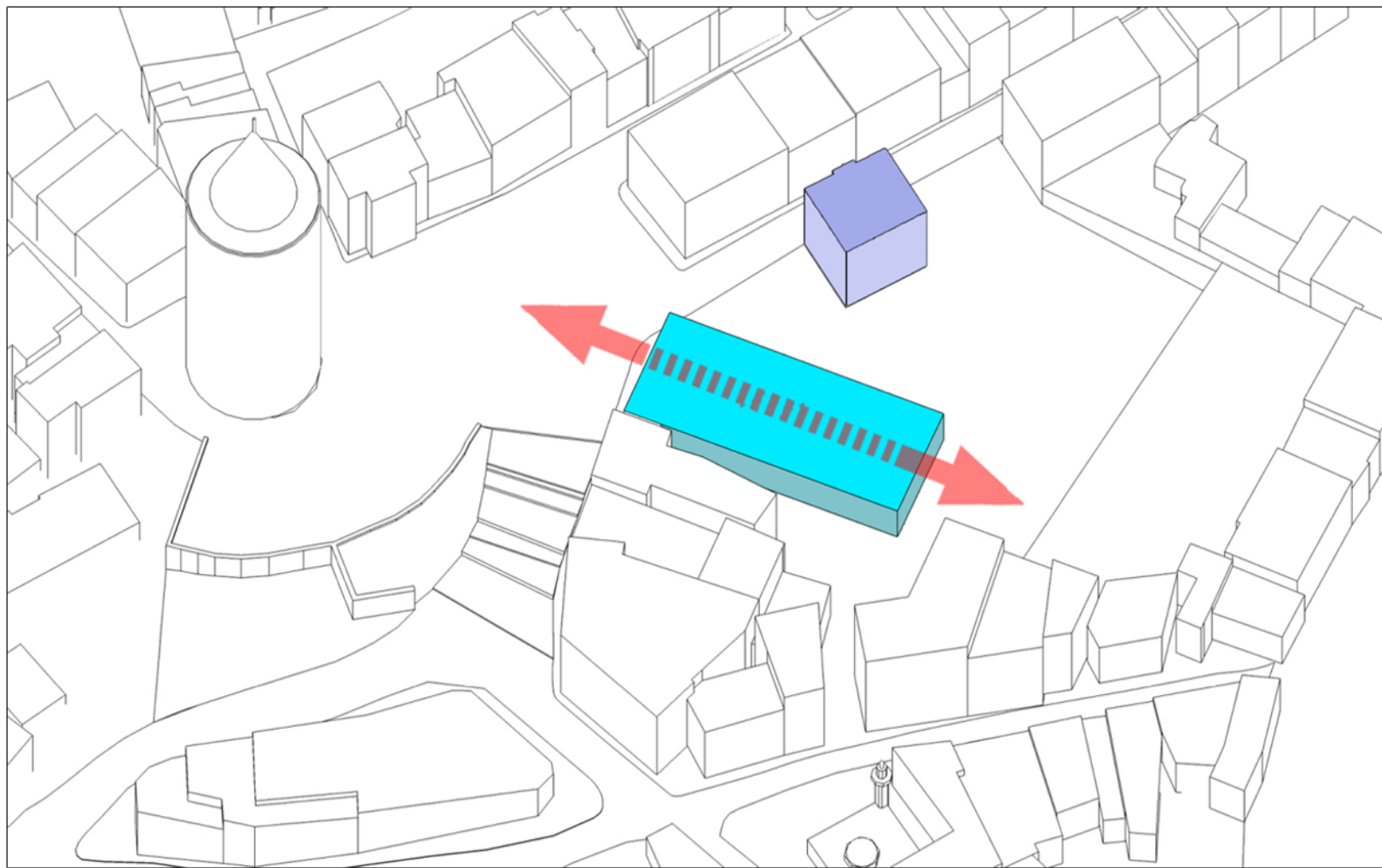
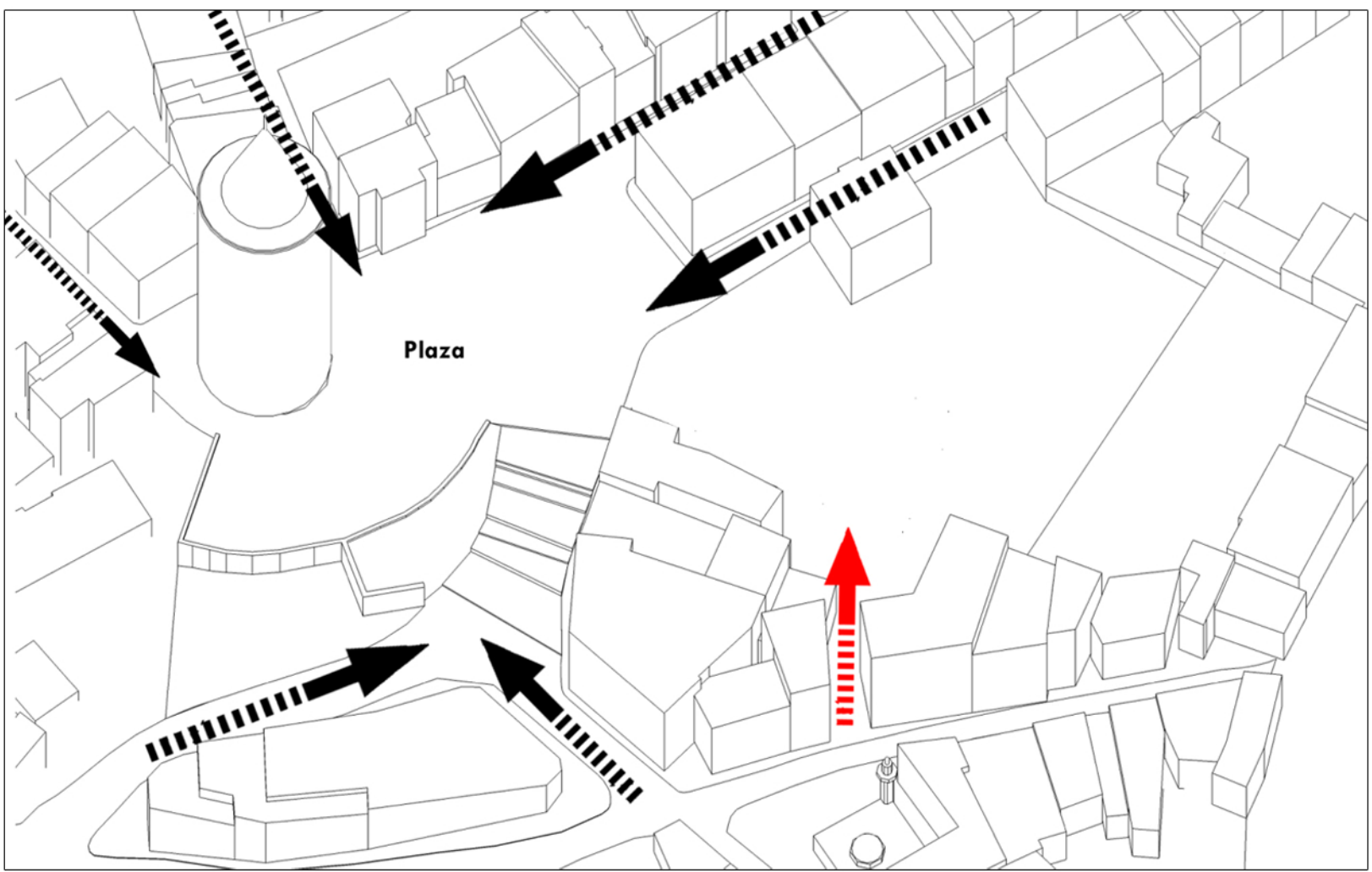
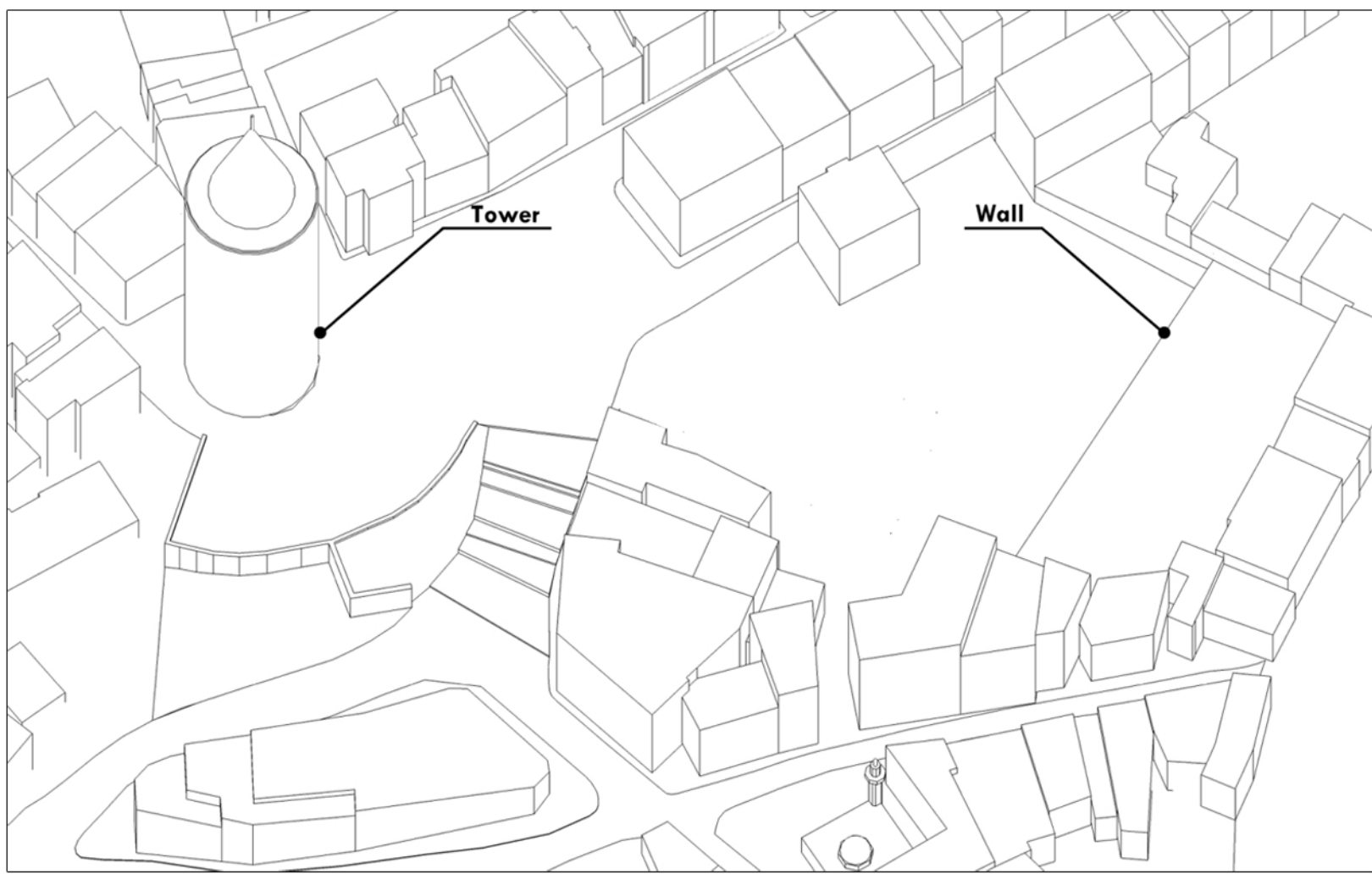
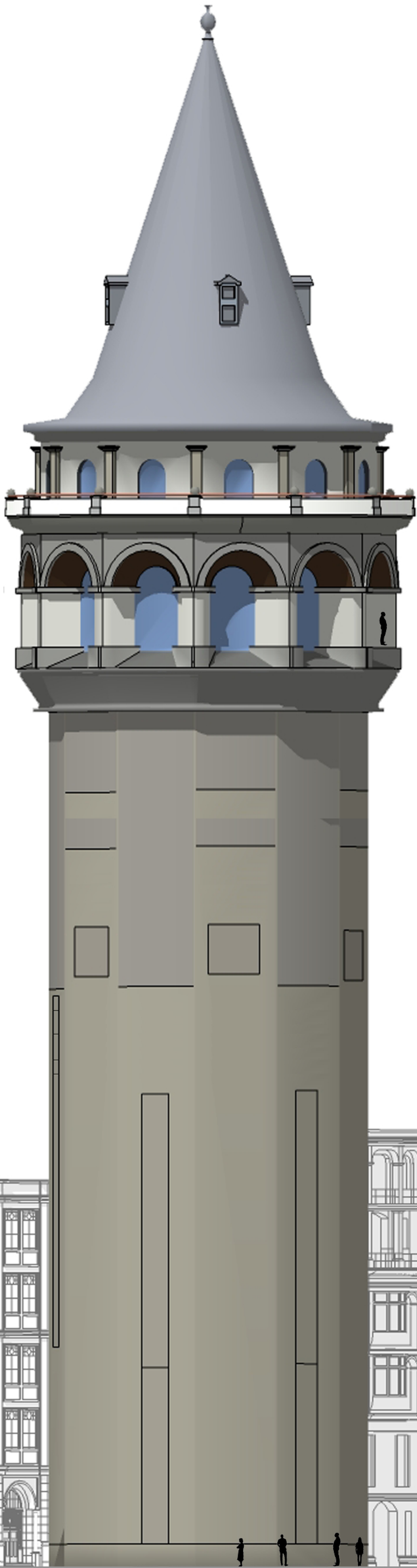
“According to the researches made regarding the proximity of the project site to the university campuses and preferred major study fields, the project will be housing 300 ESN students.”







Galata is Istanbul's prominent pedestrian district. The plaza and the site is only pedestrian accessible as well.



Istanbul is one of a host of quake-threatened cities in the developing world. Regarding the new building codes, pre-stressed precast concrete is selected and the system is broken down to zones with designated emergency exits on each.