



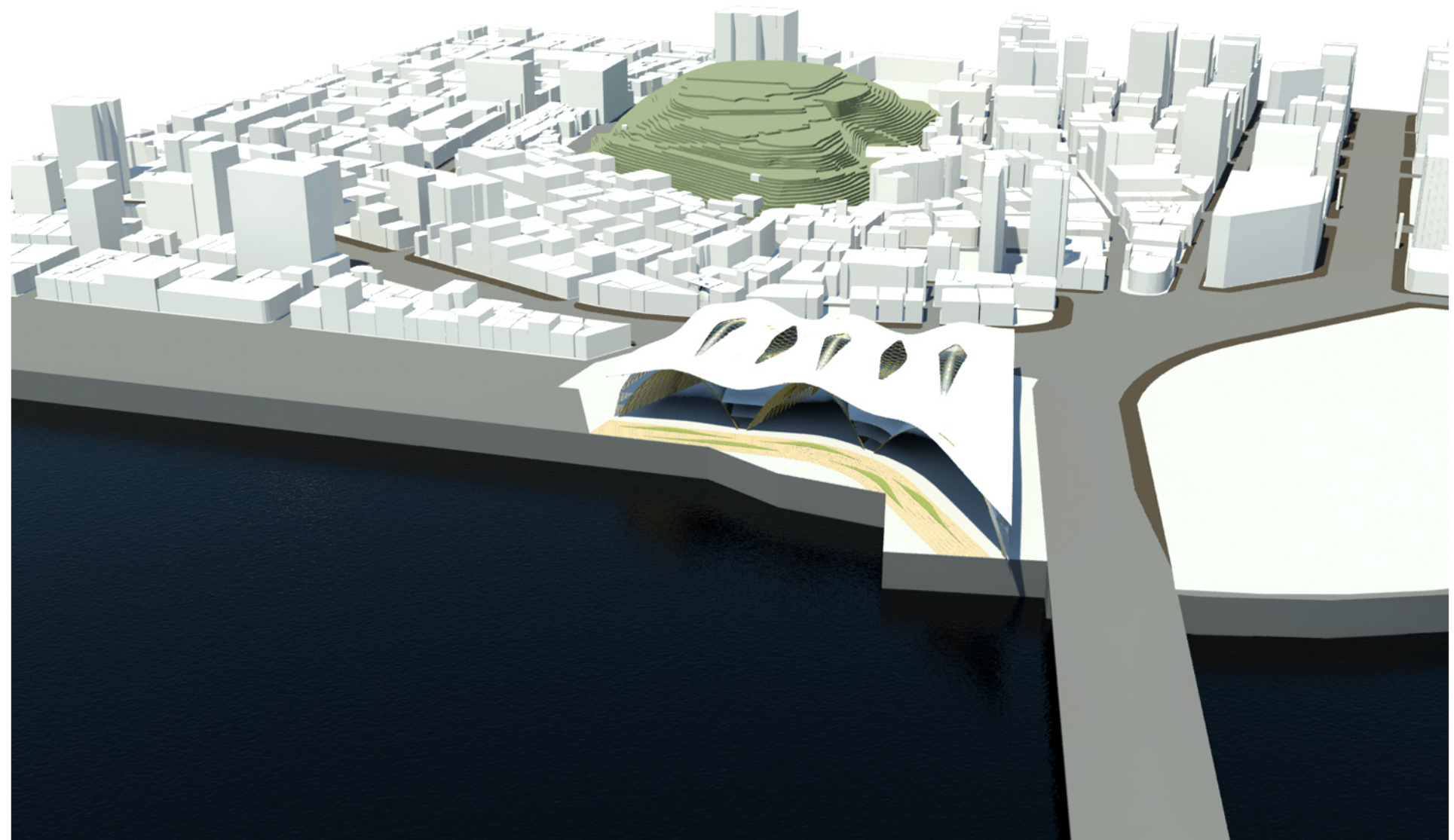
Nampodong Traditional Marketplace Redevelopment

Joongkyu Park

Introduction

The old market is medical herbs and dried fish market. Those stores have started with street stalls from 1900. This market was one of the Busan's attractions. However, as department store, big mart and hotels comes around the market, it has lost its competitiveness. And this place will be developed as tourist complex area.

My goal is to redevelop its original role as market and provide public space for customers and tourist.



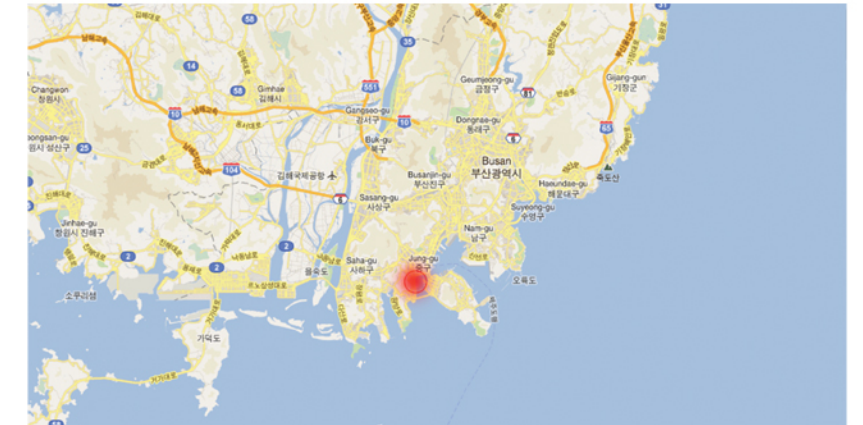
Site



Korea



Busan, Korea

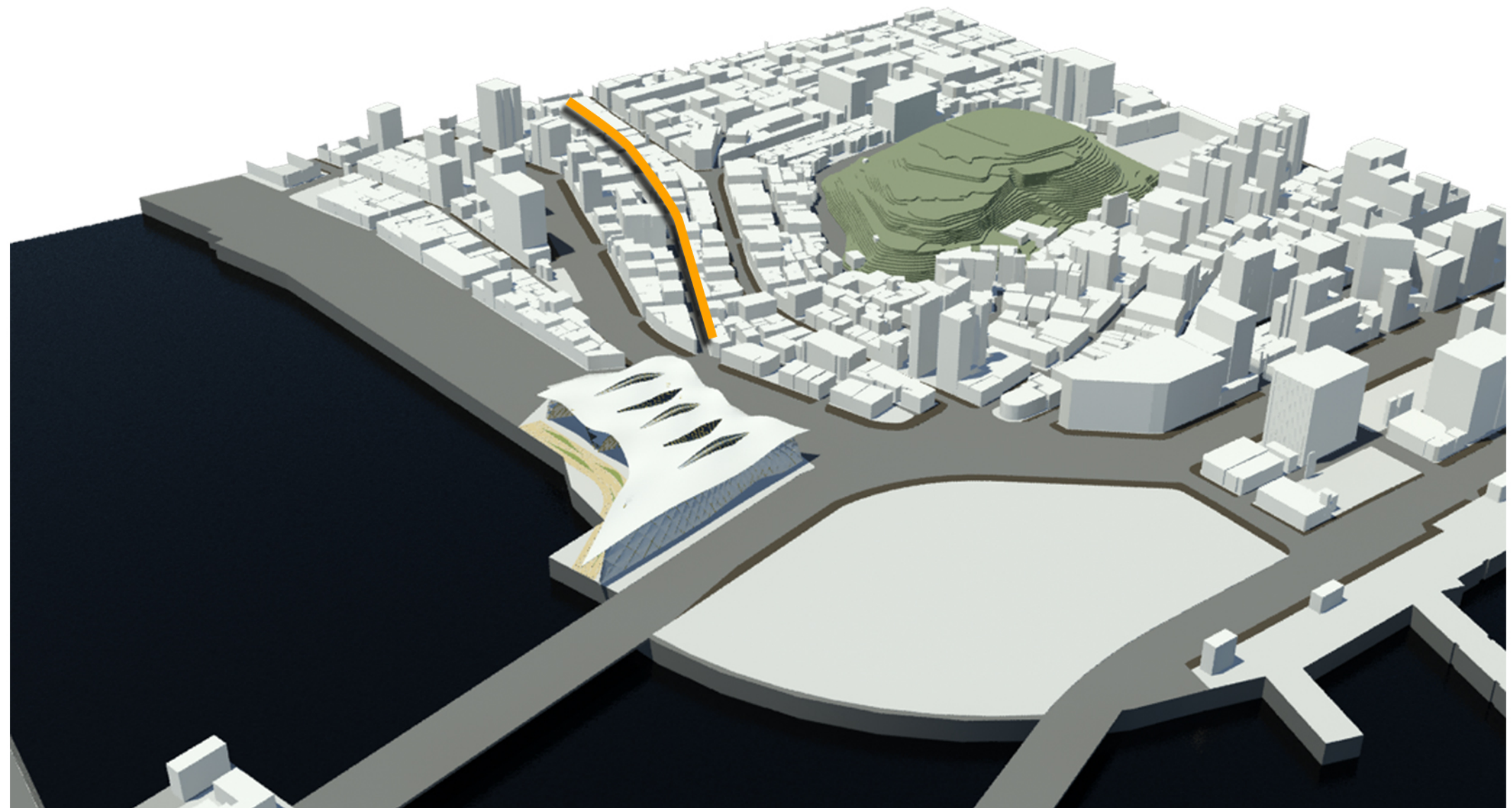


Nampo-dong, Jung-Gu, Busan, Korea



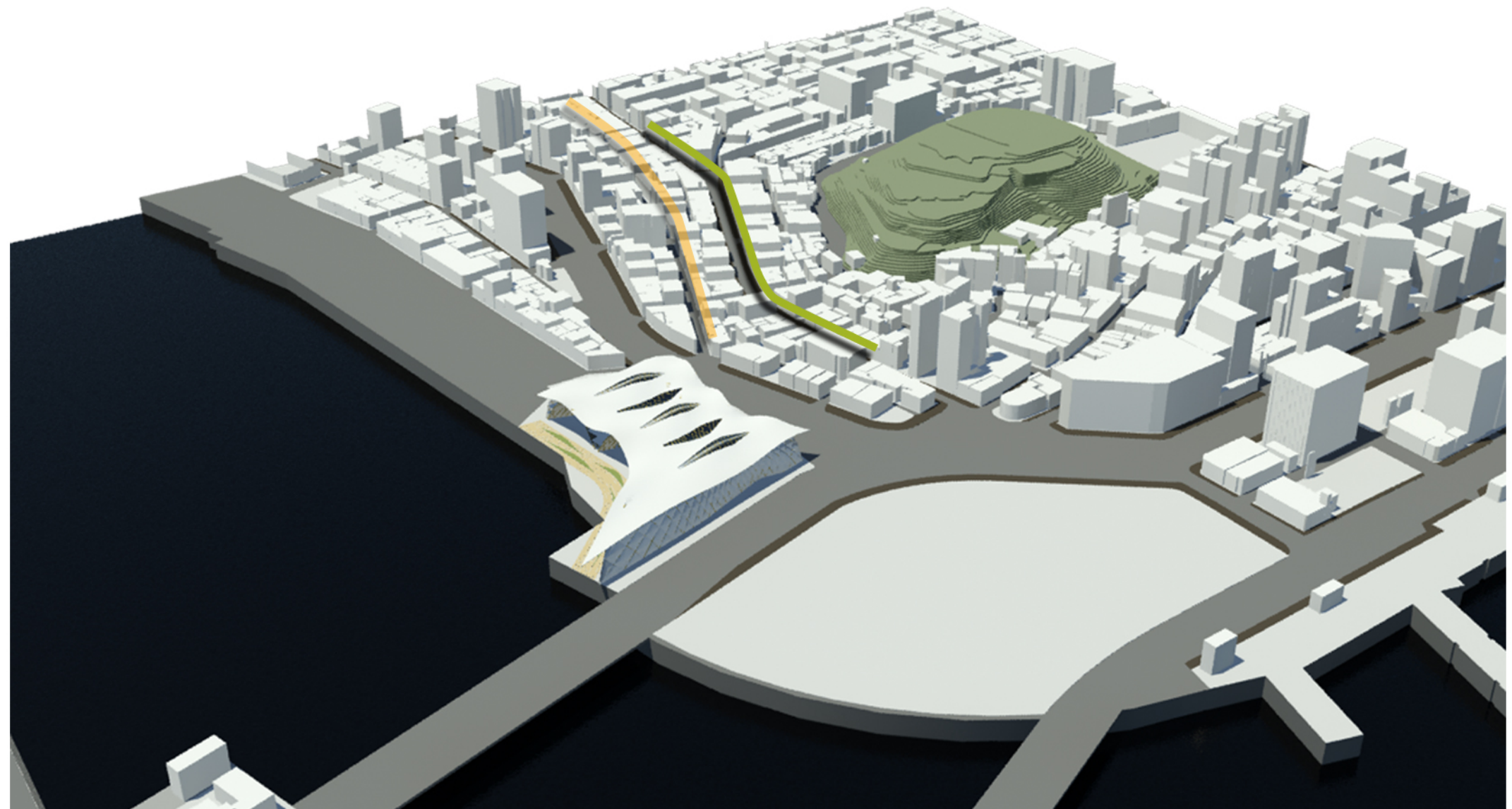
Site

BIFF(Busan international Film Festival) Street



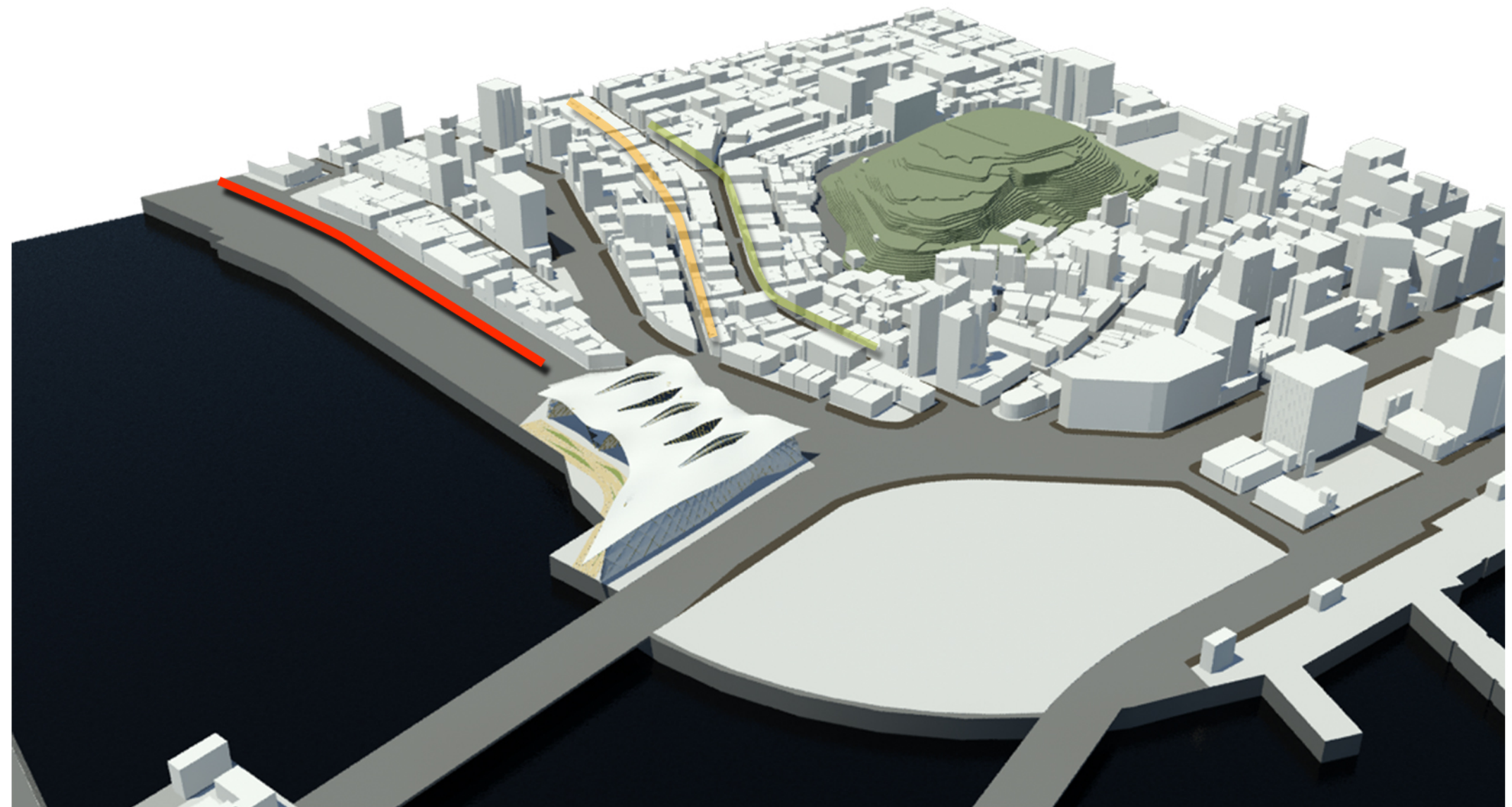
Site

Gwangbok Fashion Street



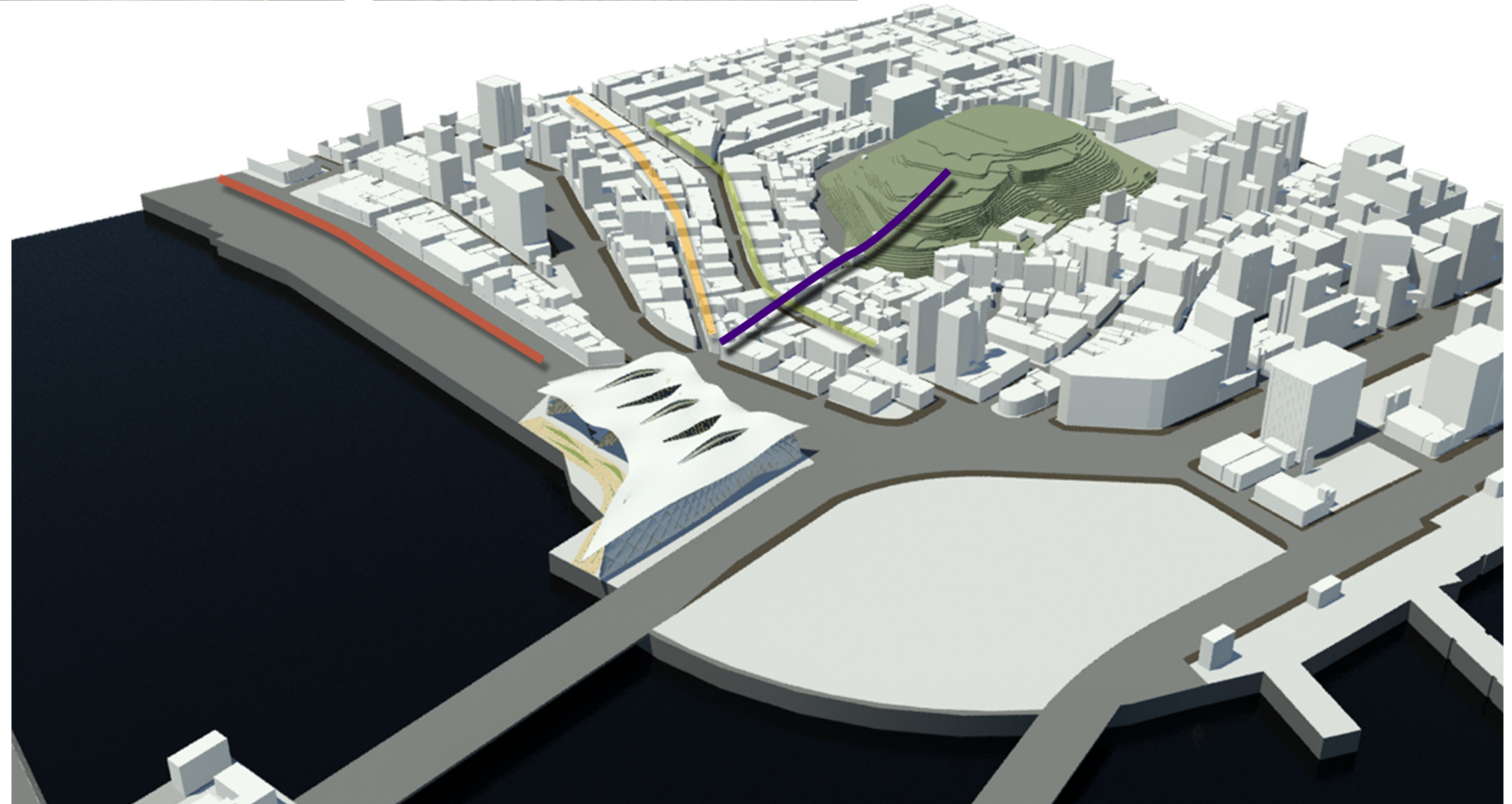
Site

Jagalchi Fish Market



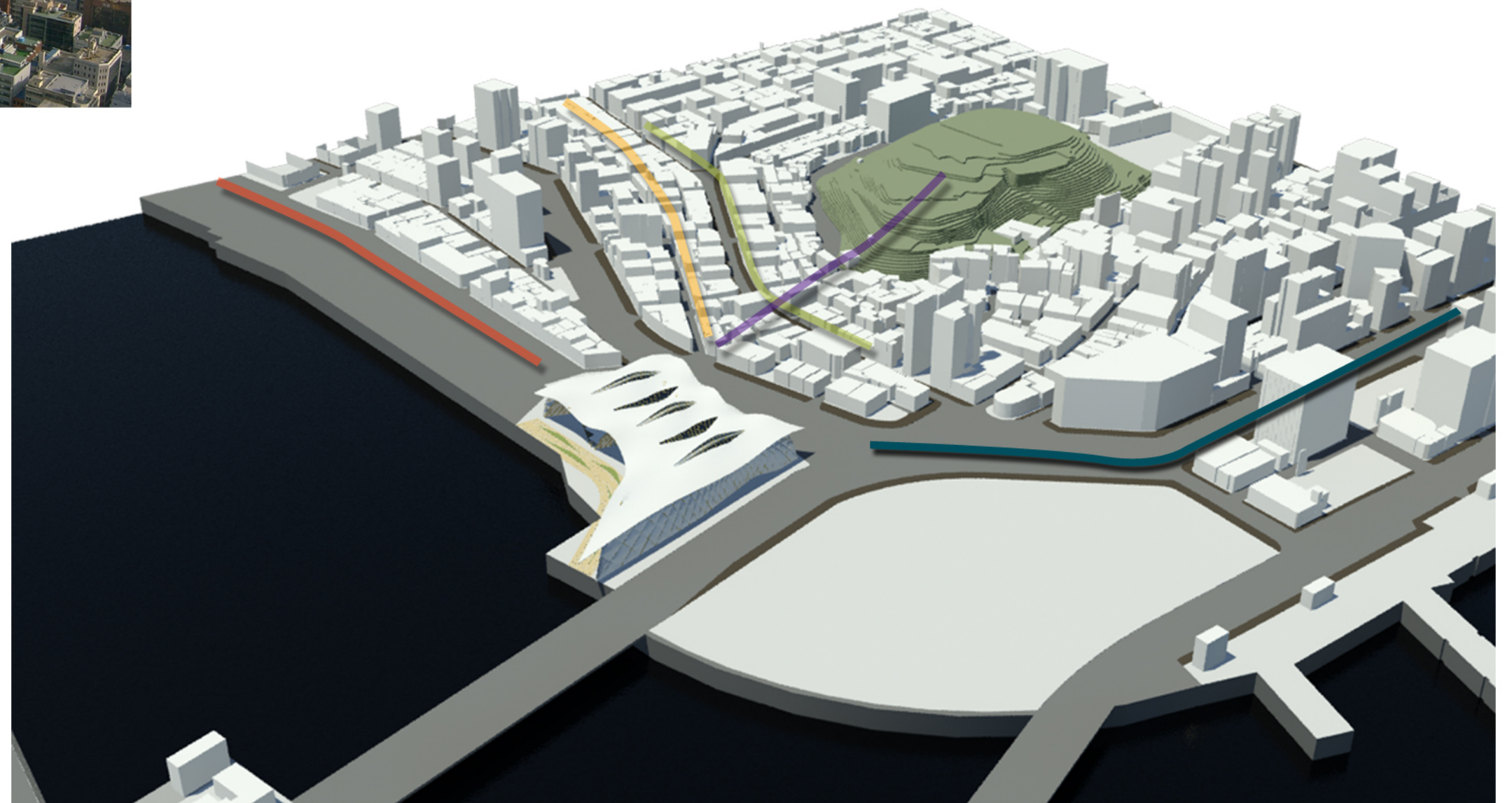
Site

Yongdu Park



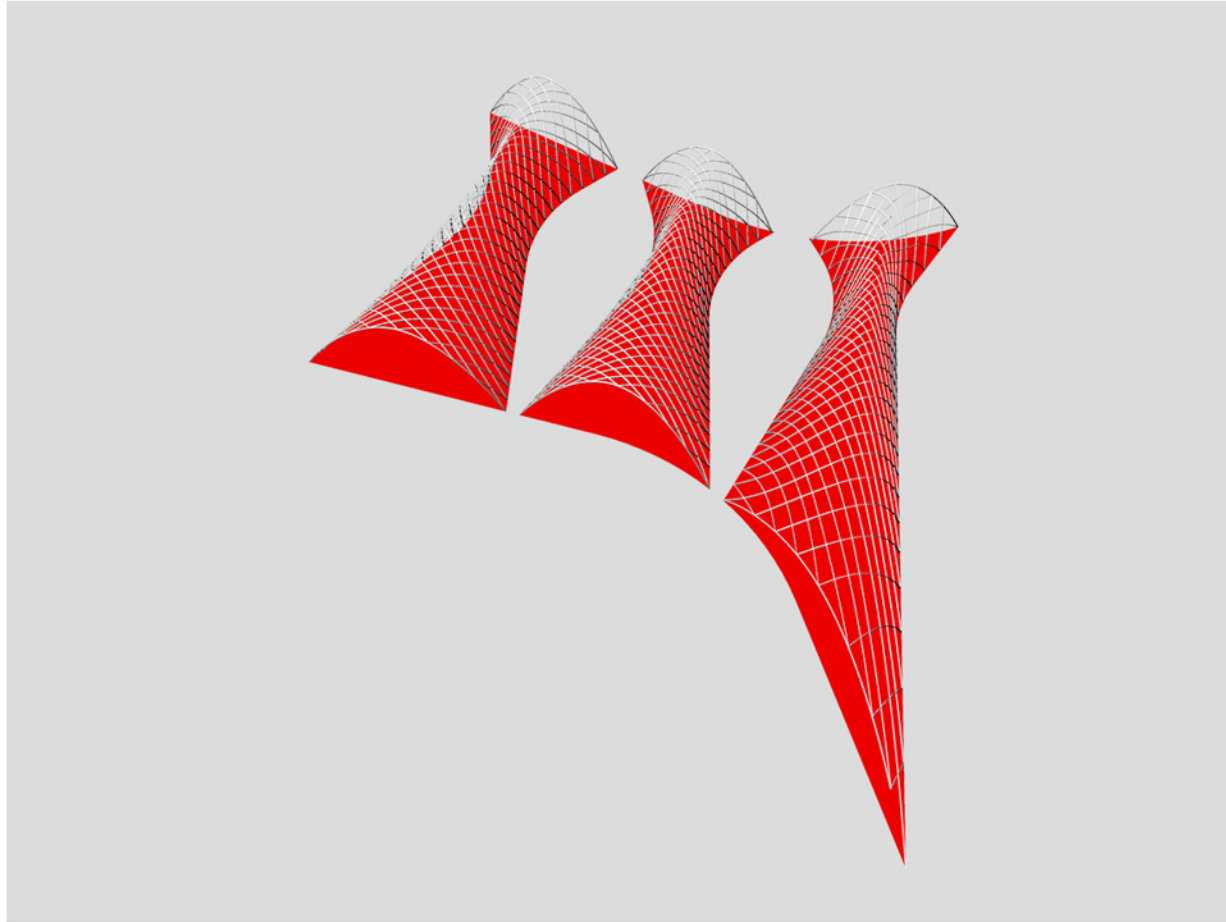
Site

Commercial Street

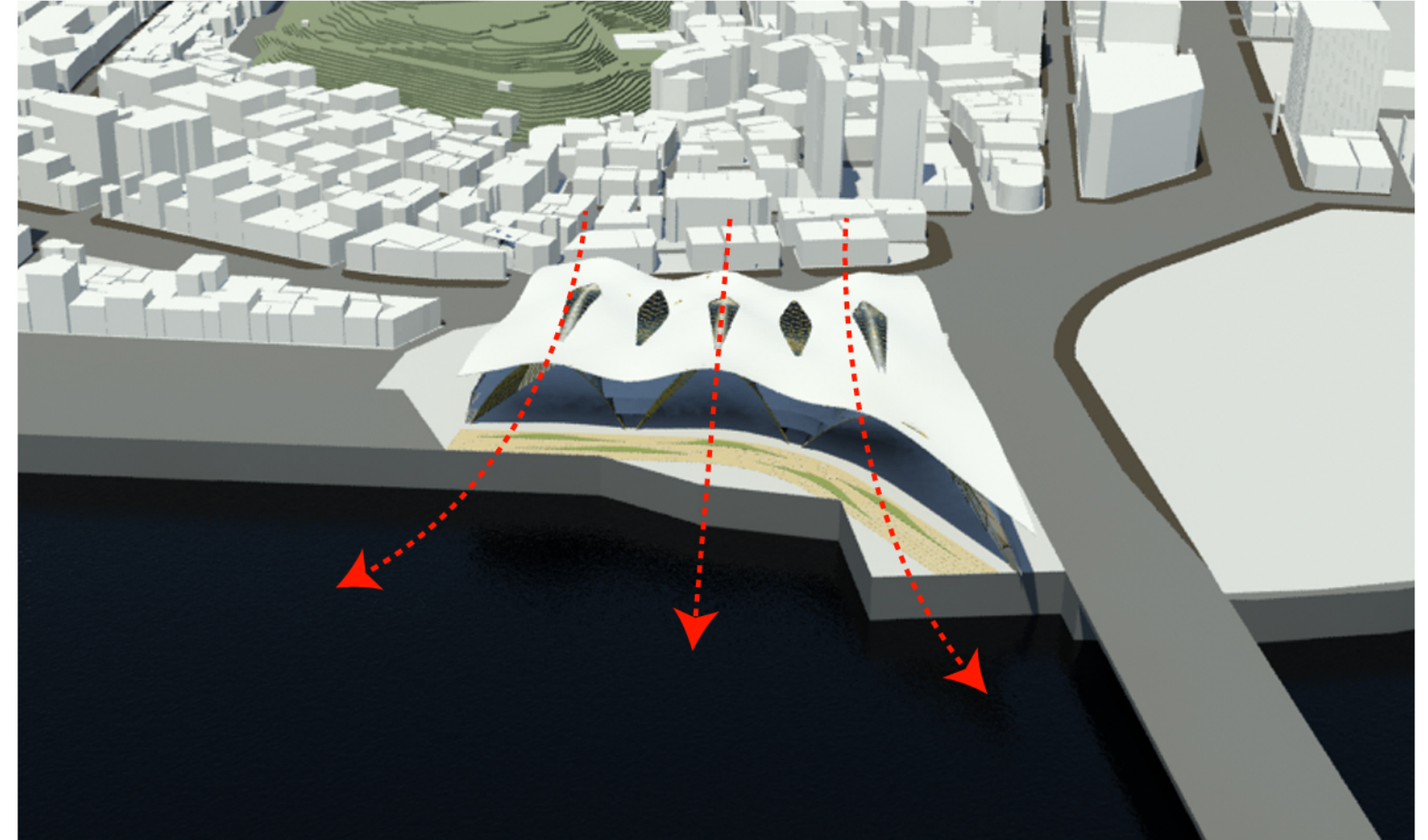


Program

Open Market

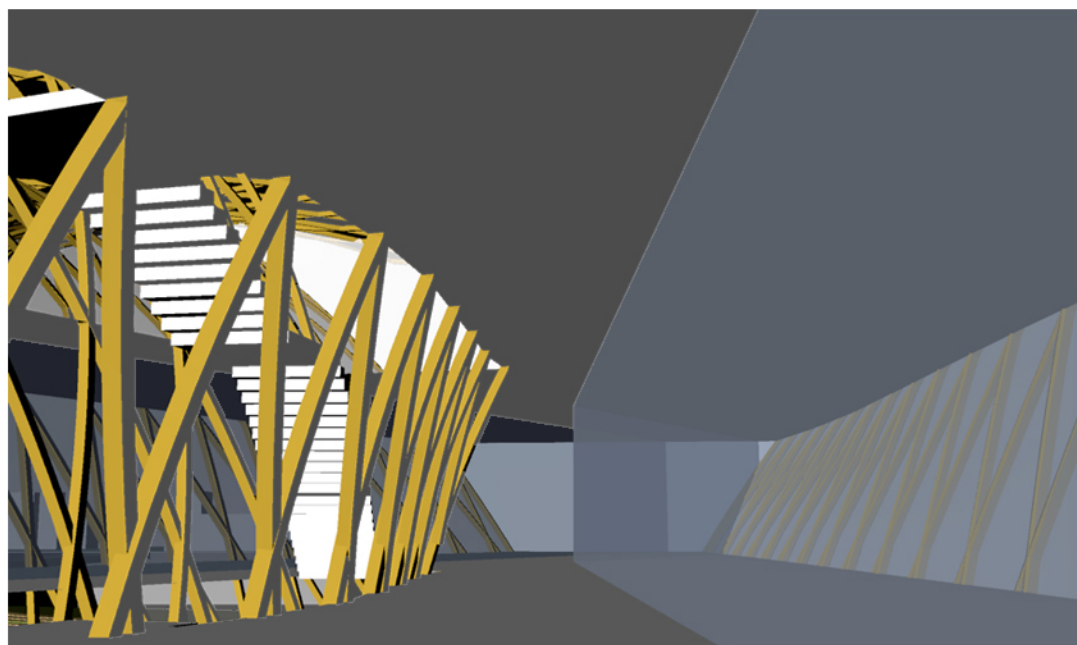
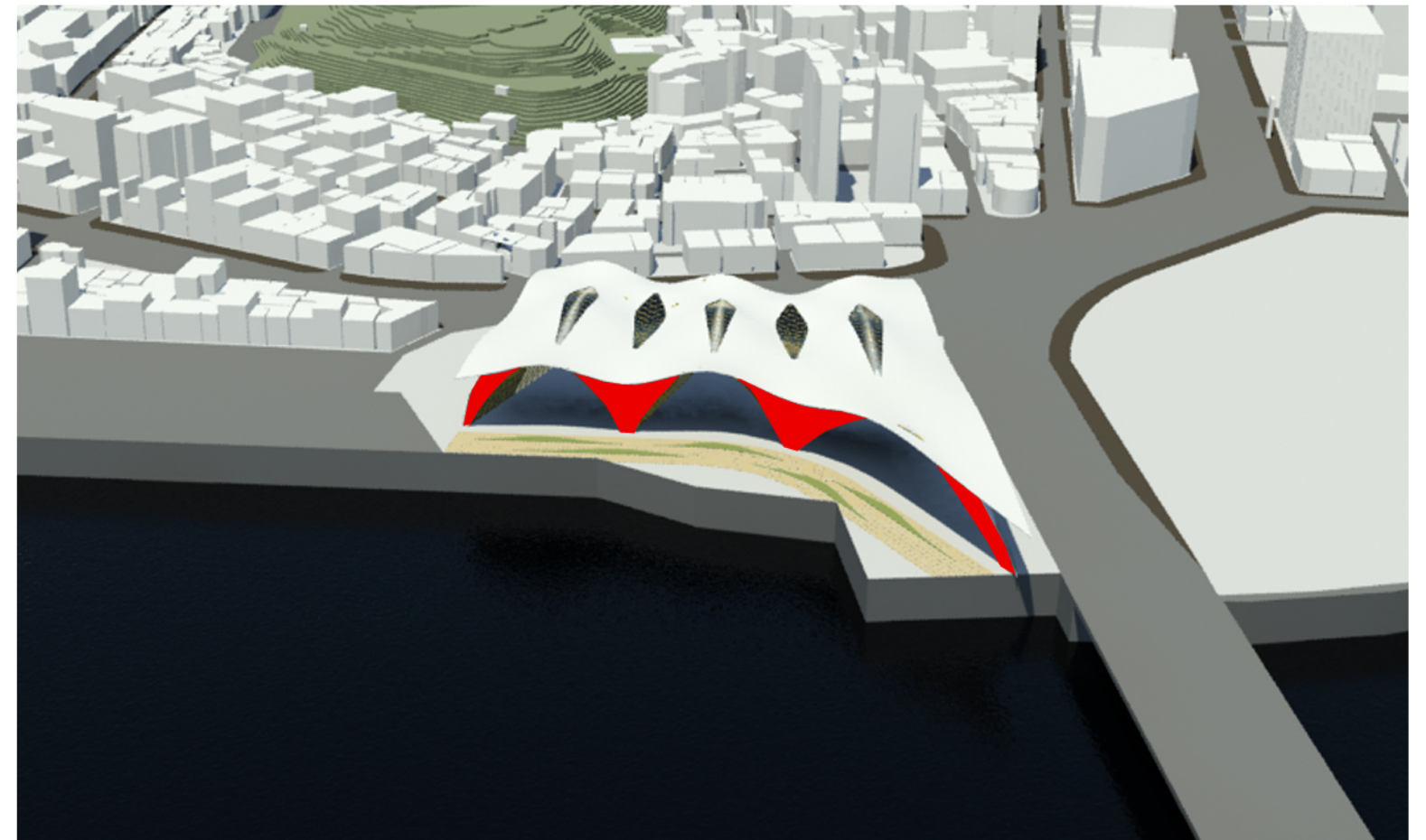
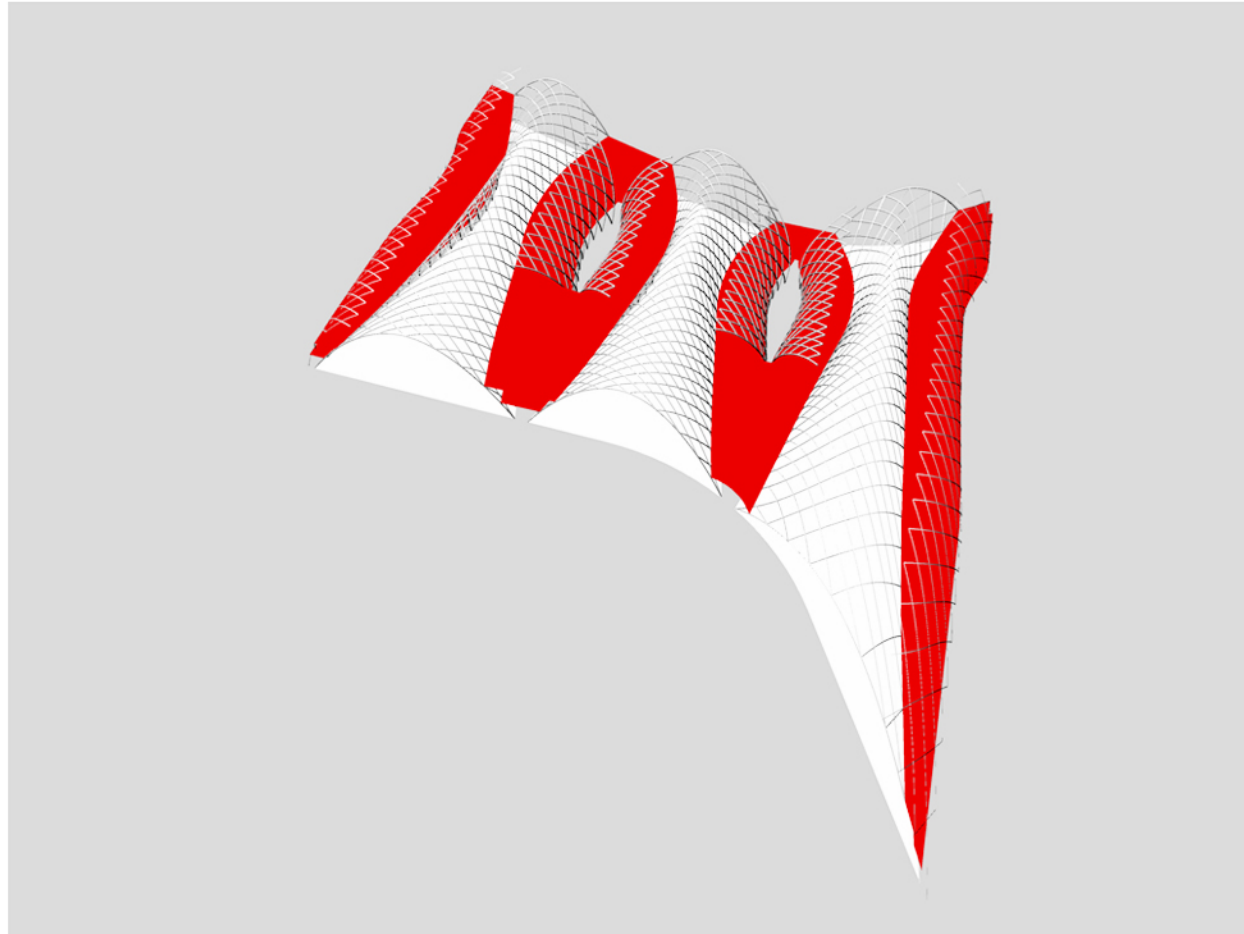


Visual Connection



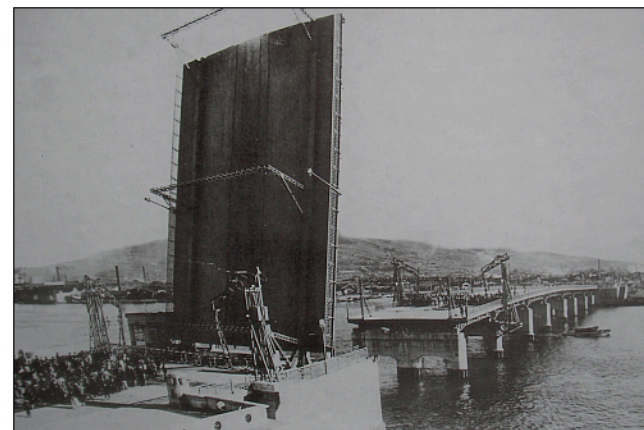
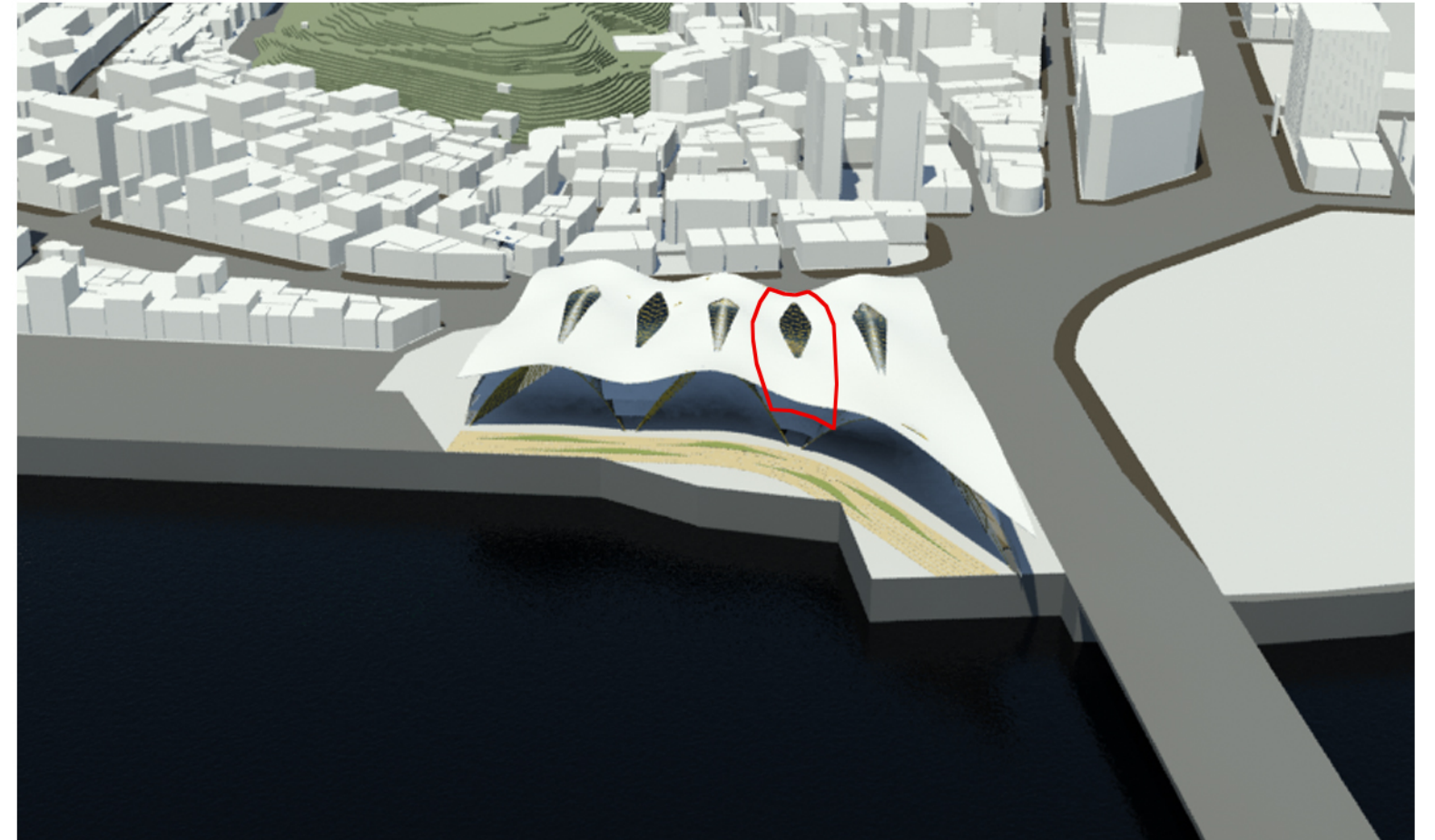
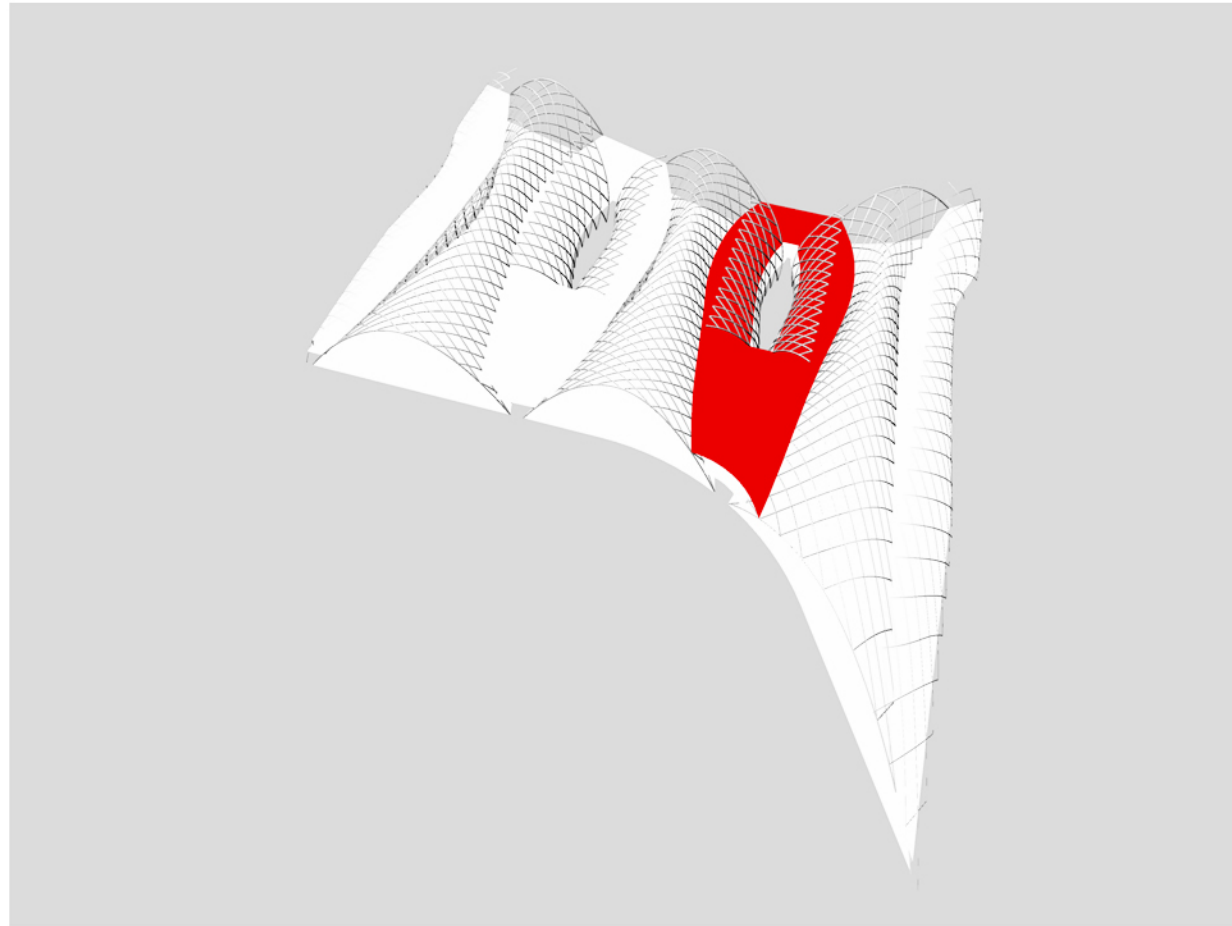
Program

Inside Market



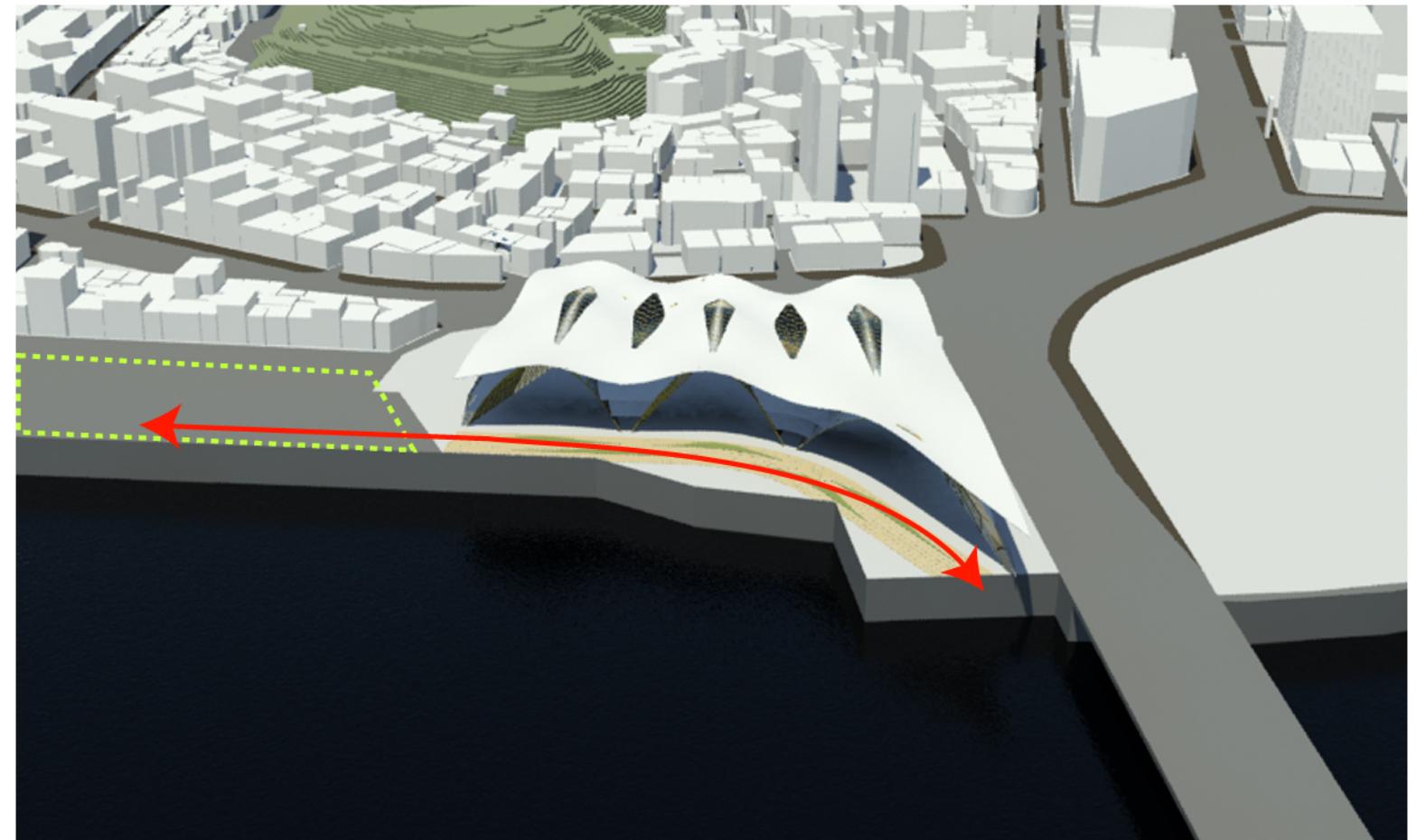
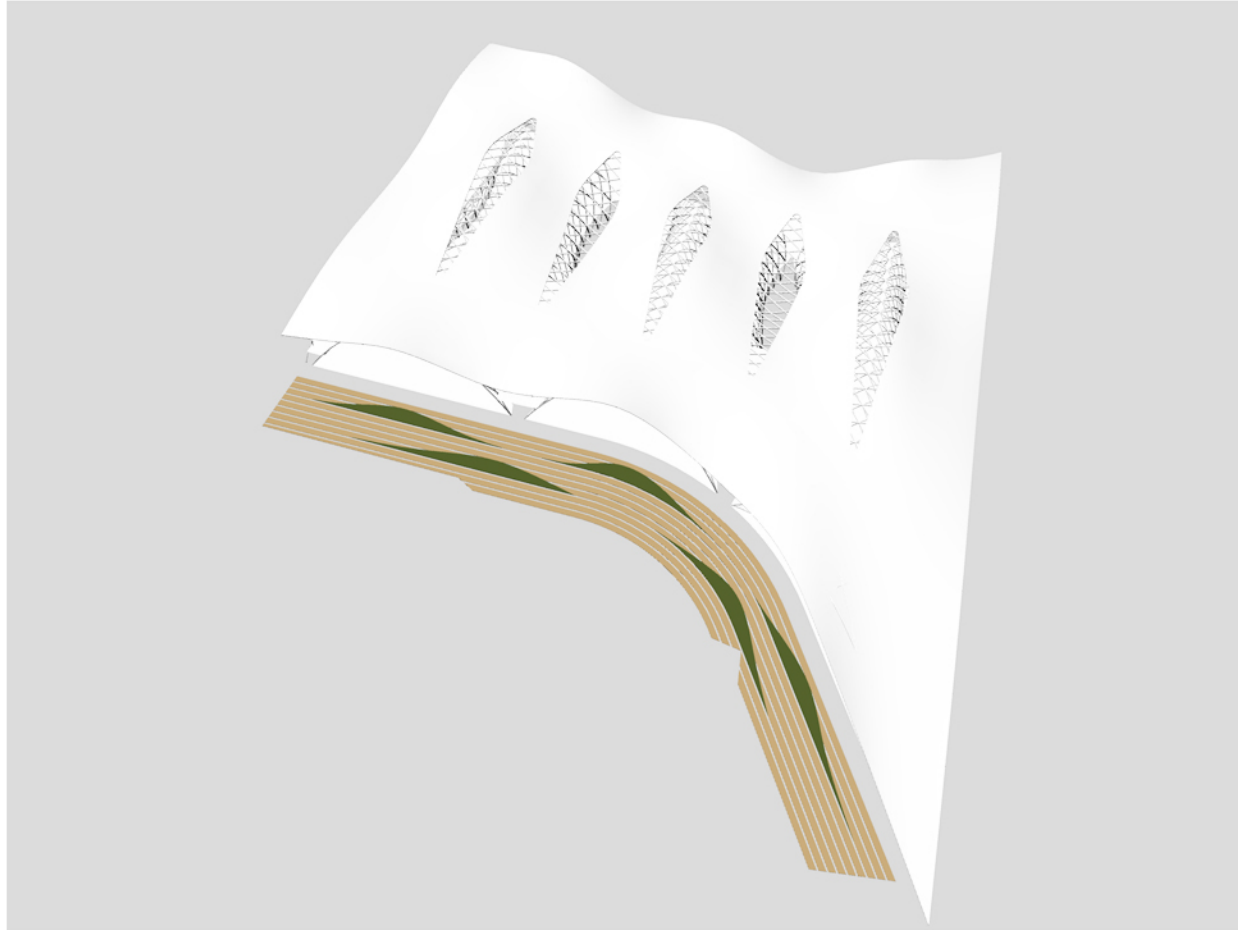
Program

Memorial Hall

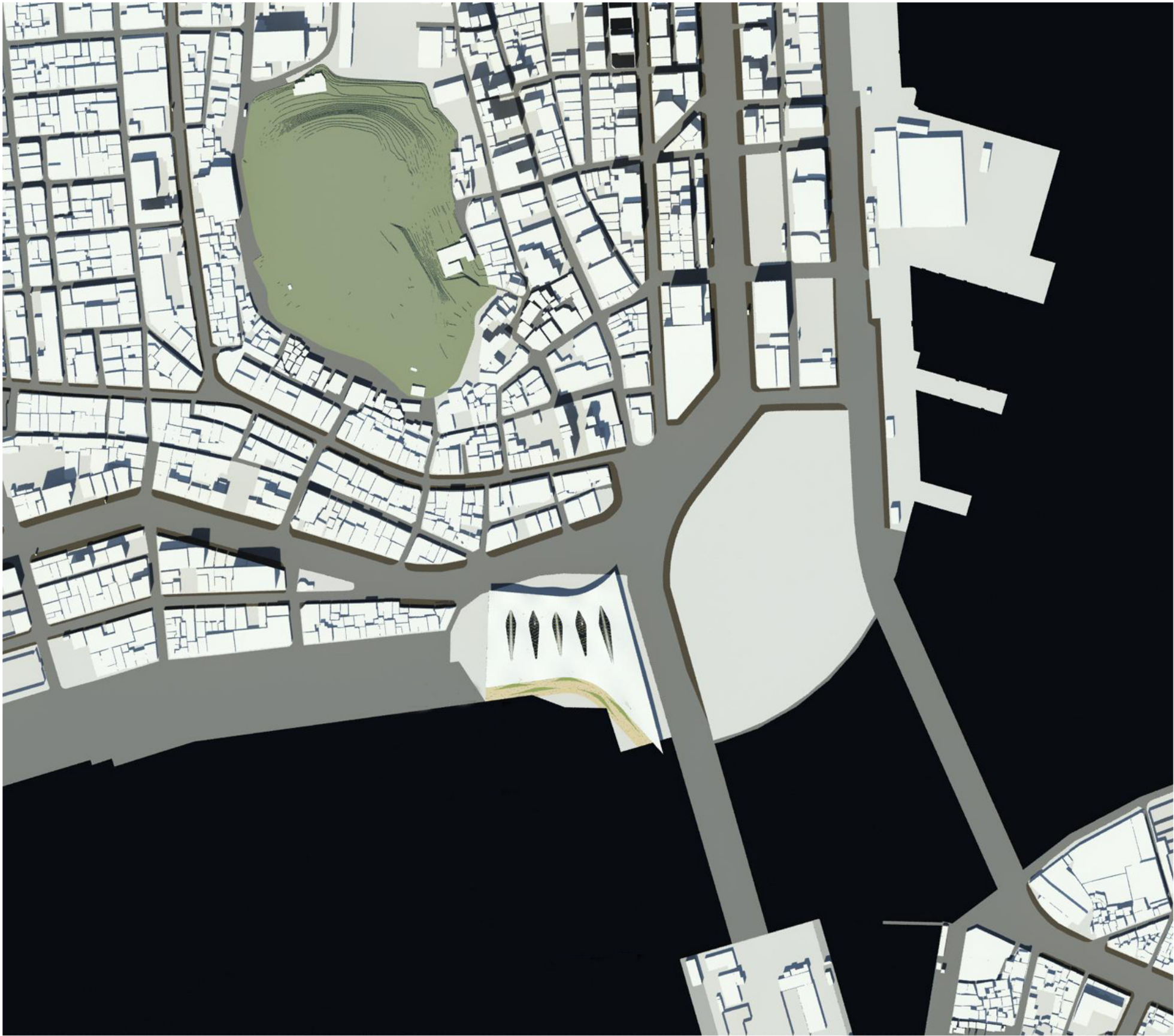


Program

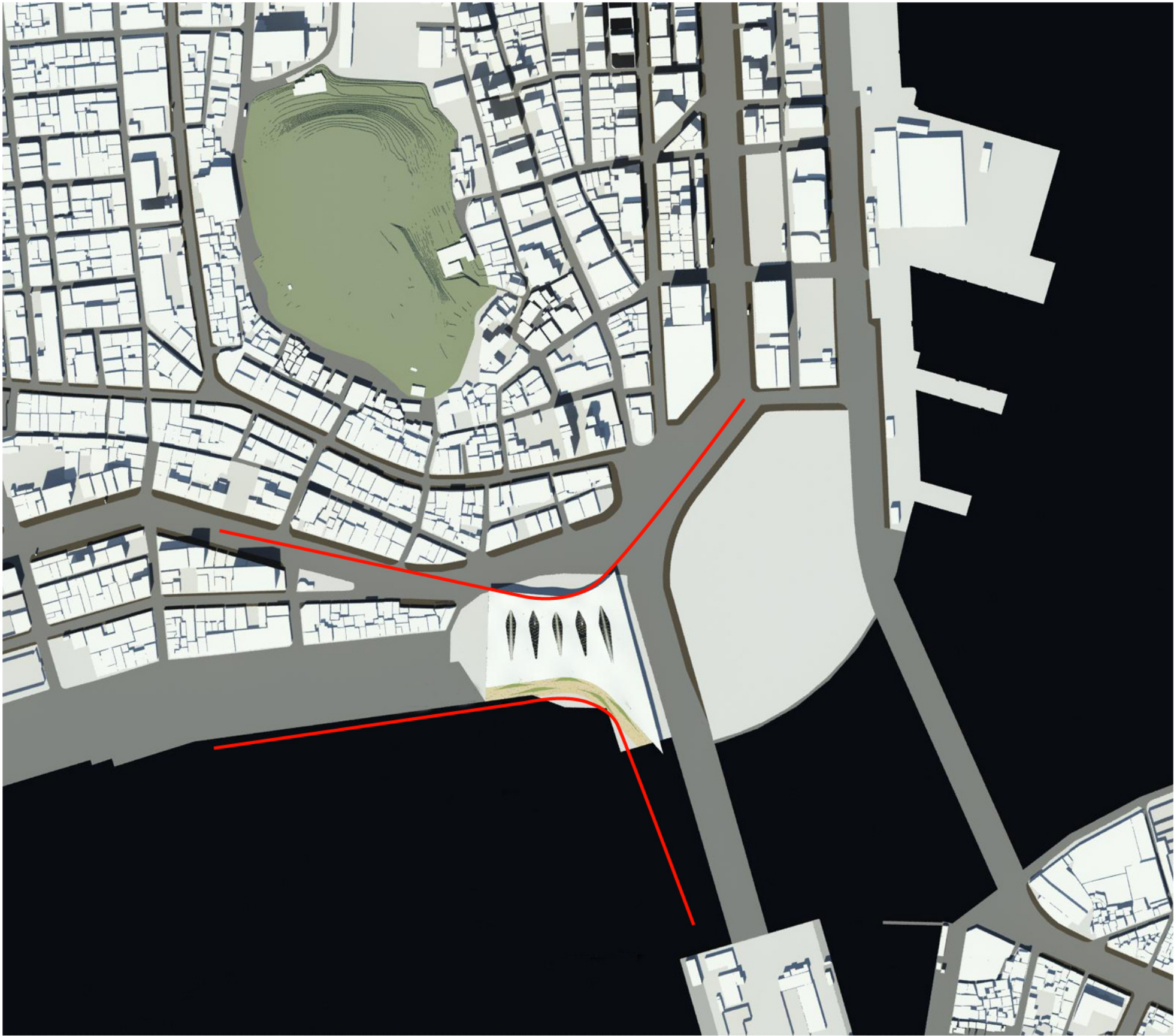
Waterfront Park



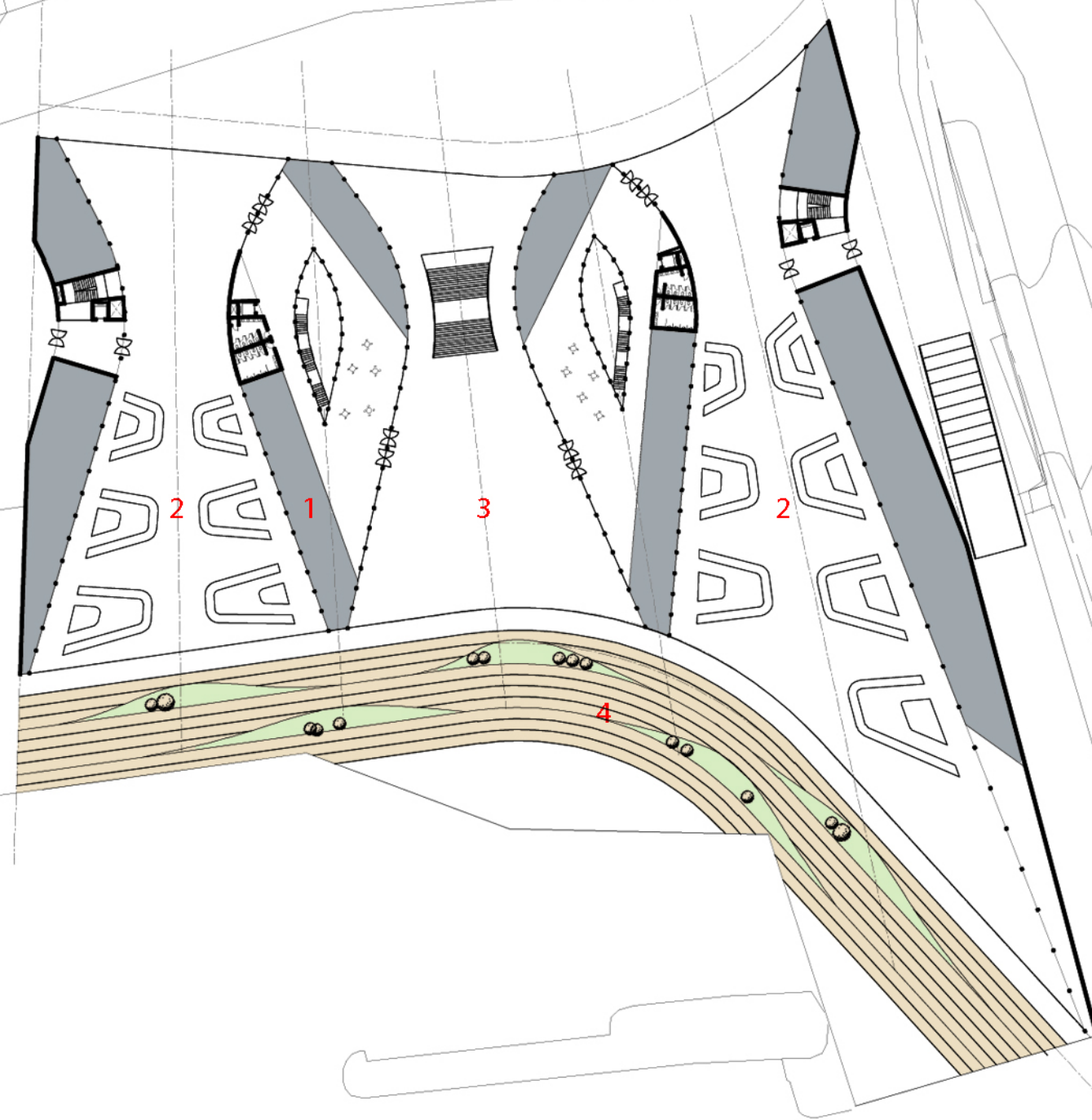
Site Plan



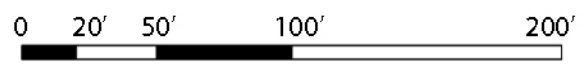
Site Plan



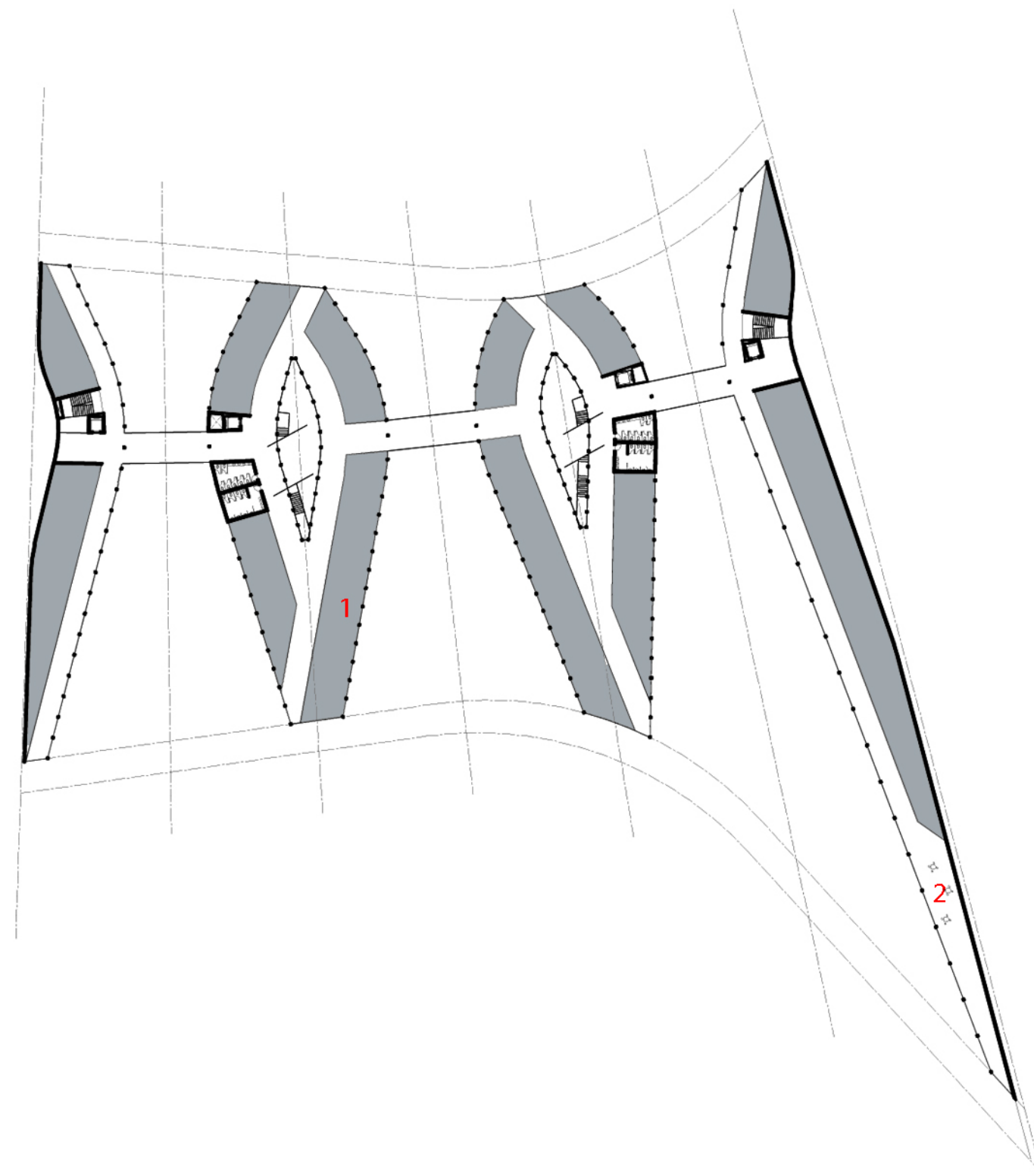
1F



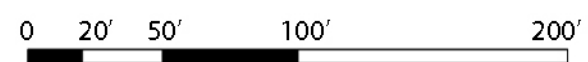
- 1 Stores
- 2 Open Market
- 3 Main Hall
- 4 Waterfront Park



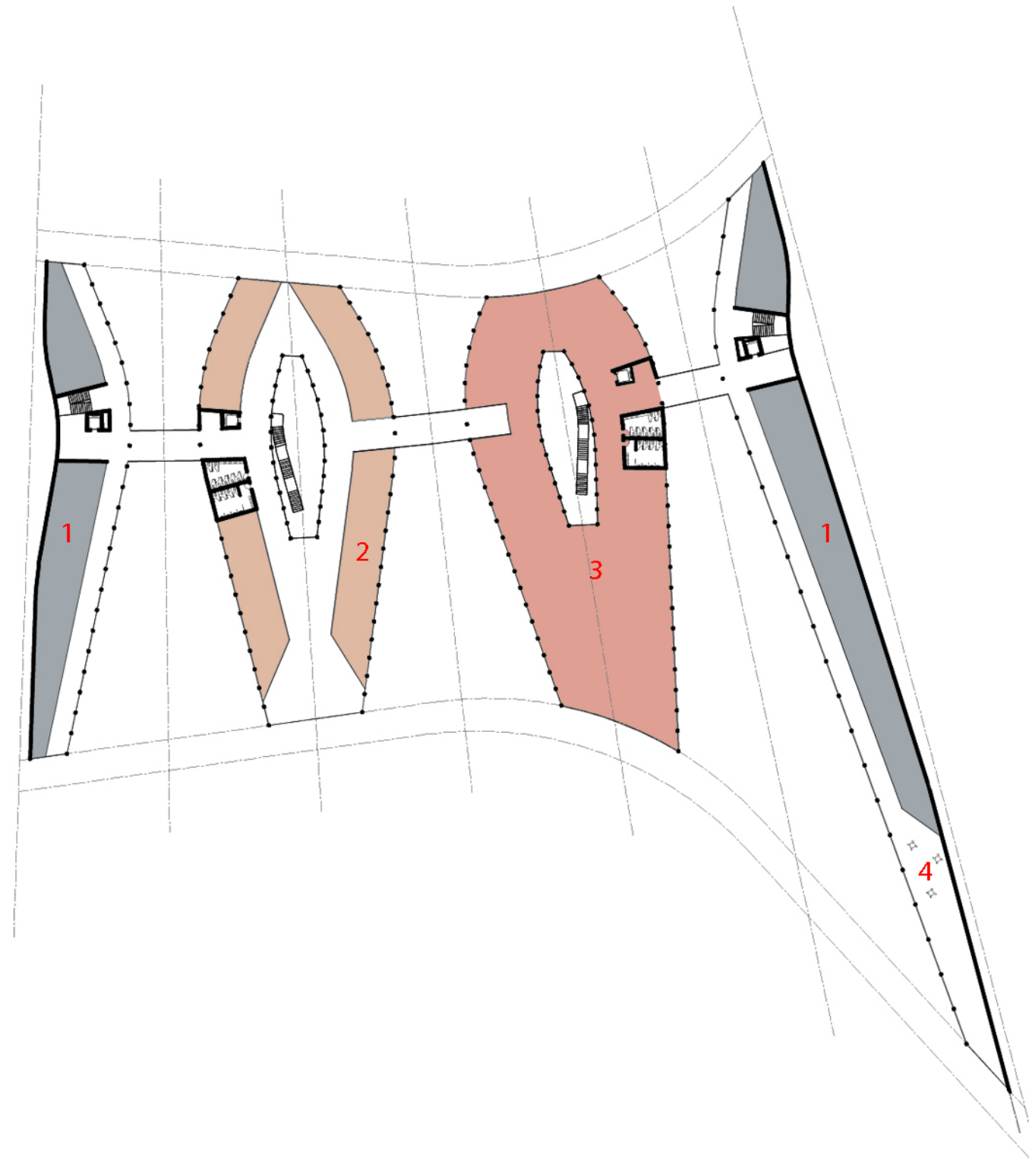
2F



- 1 Stores
- 2 Lounge



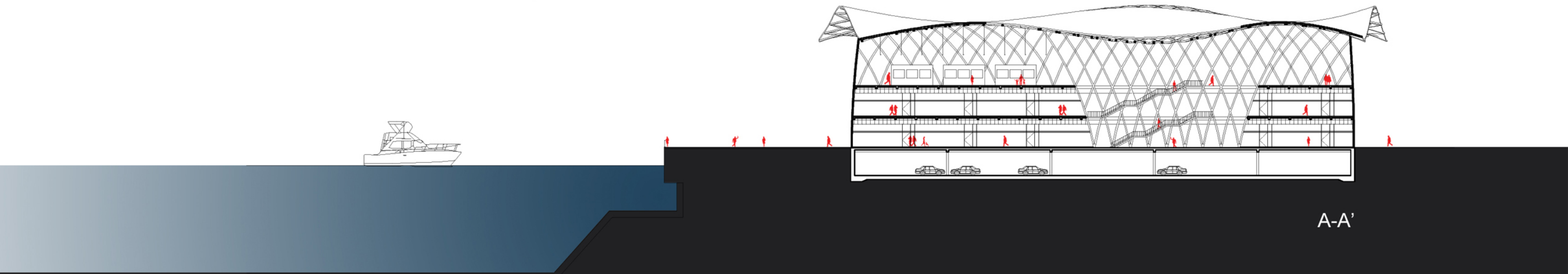
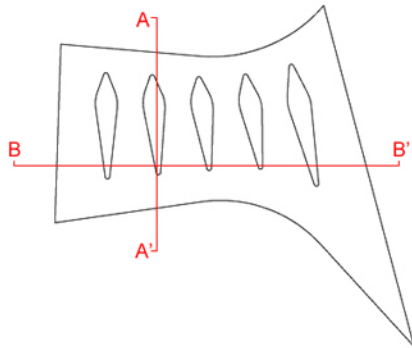
3F



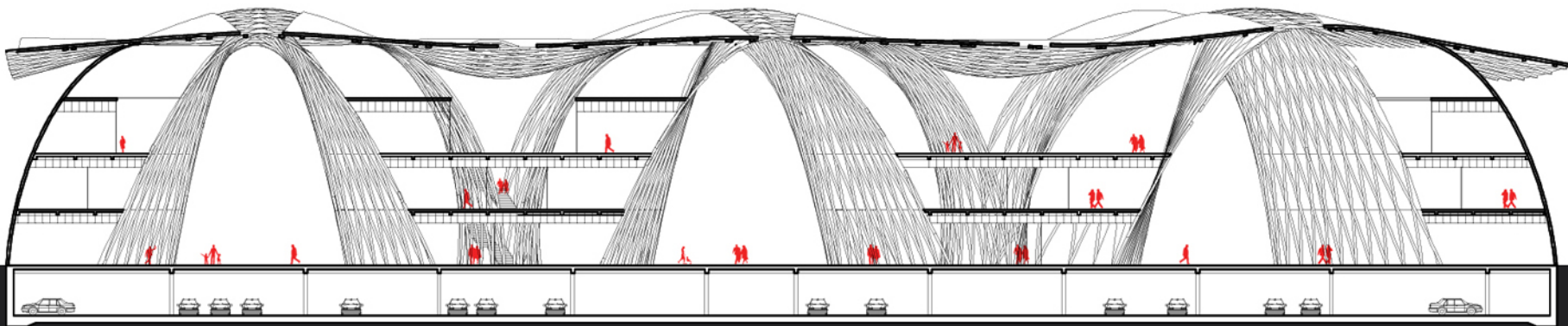
- 1 Stores
- 2 Restaurants
- 3 Memorial Hall
- 4 Lounge

0 20' 50' 100' 200'

Section



A-A'

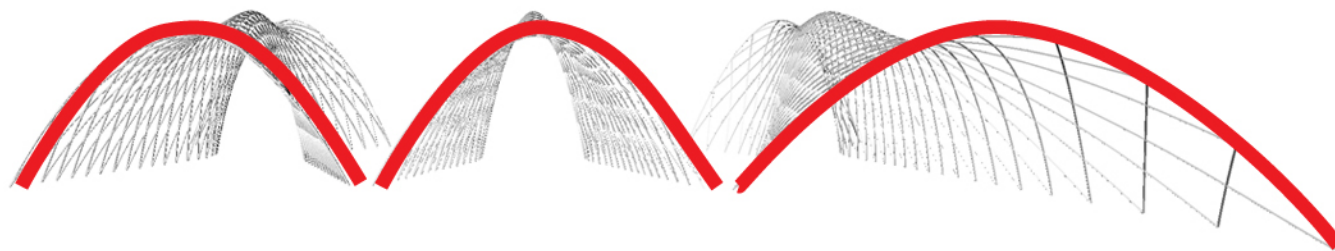
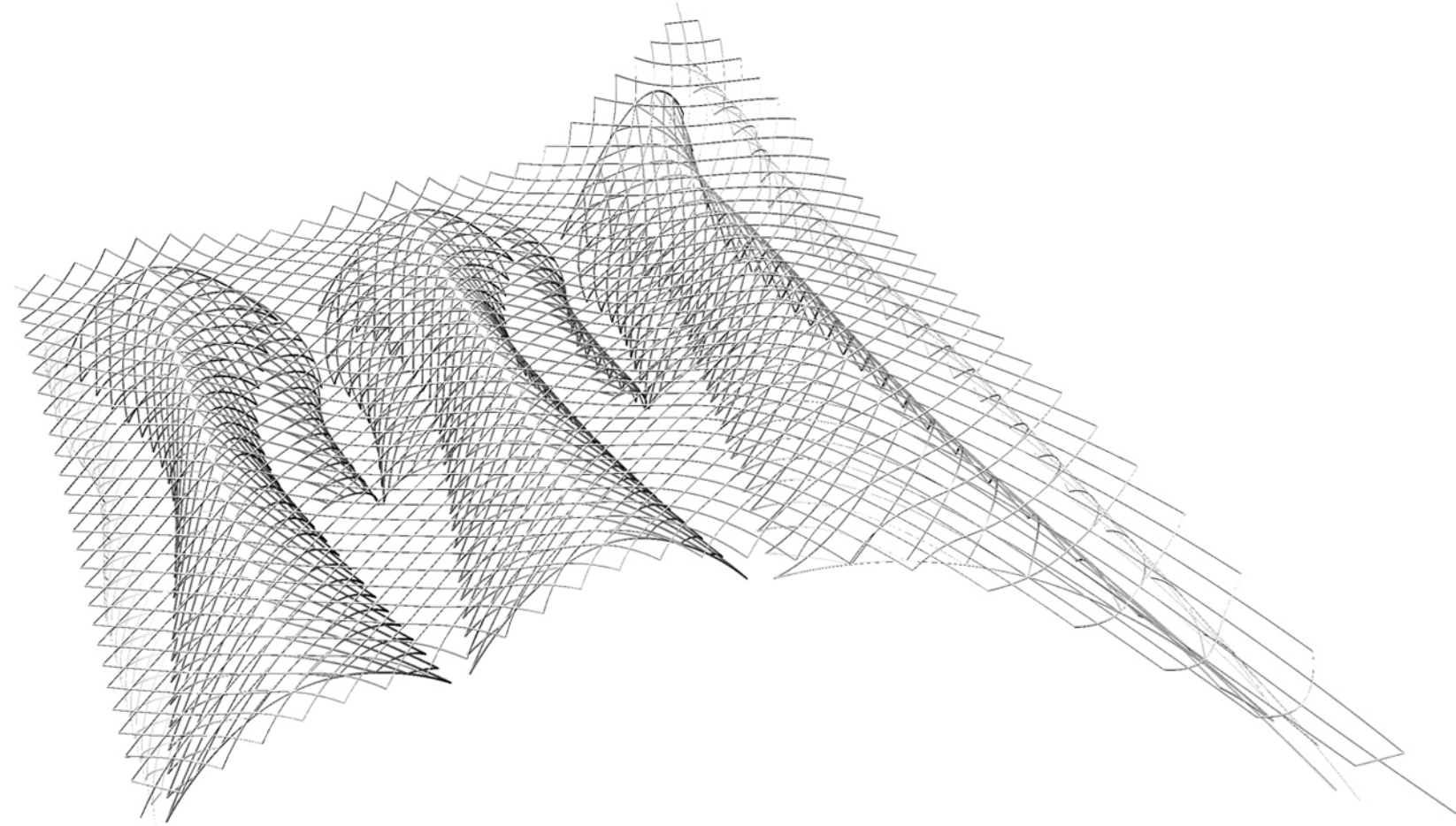
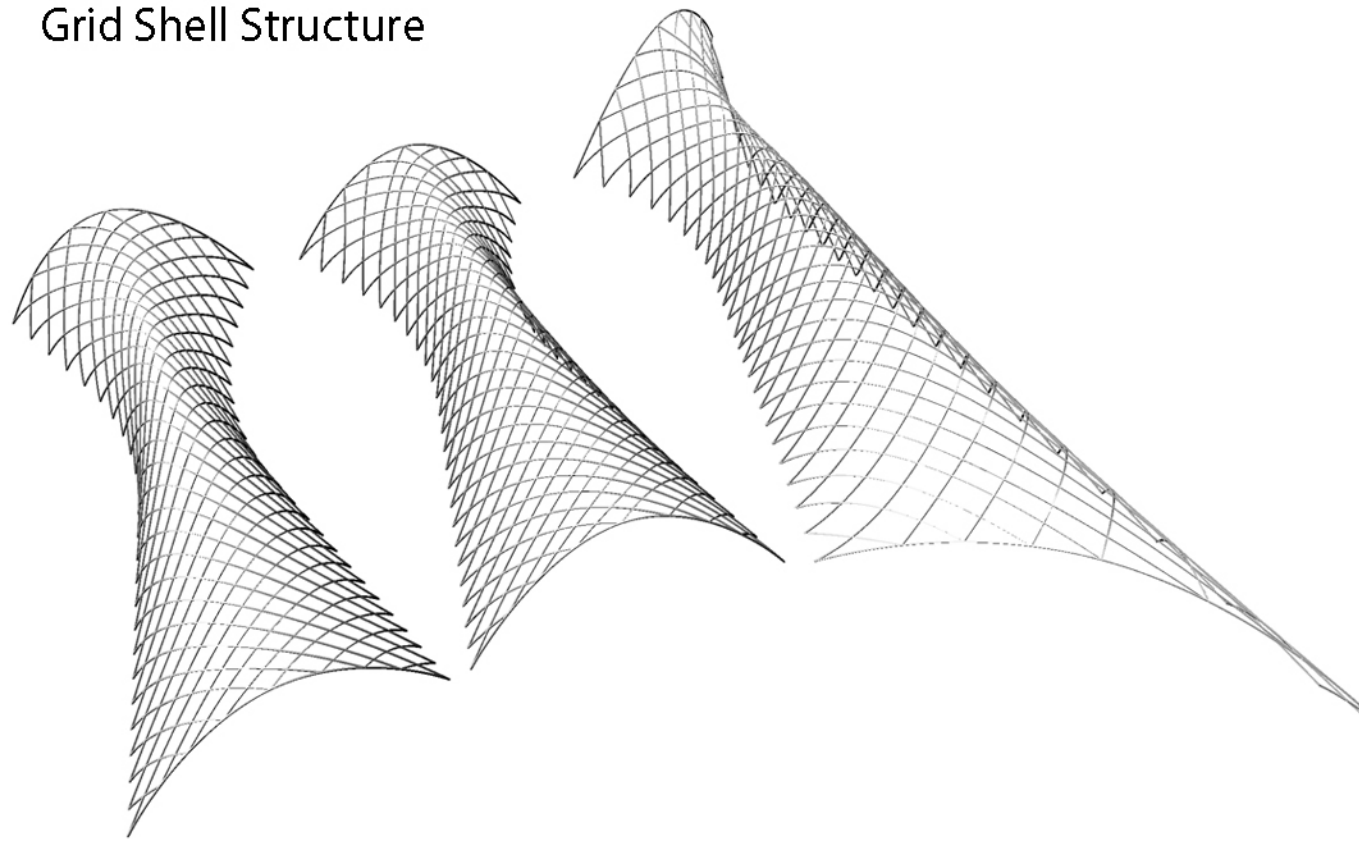


B-B'

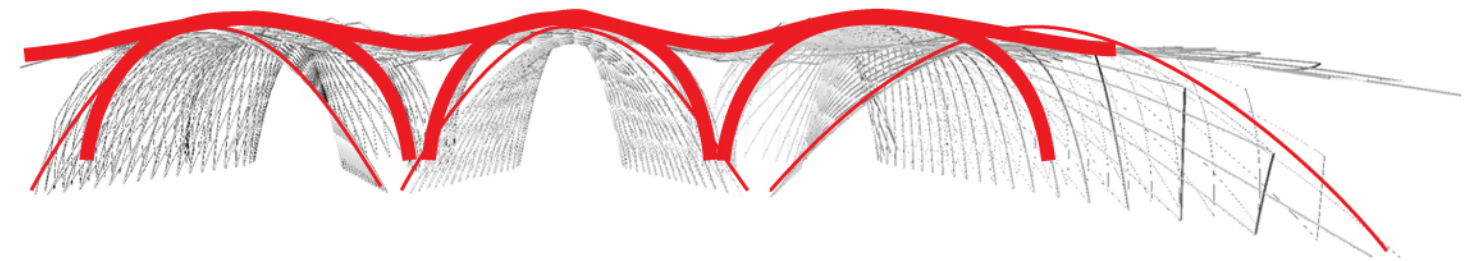


Structure

Grid Shell Structure



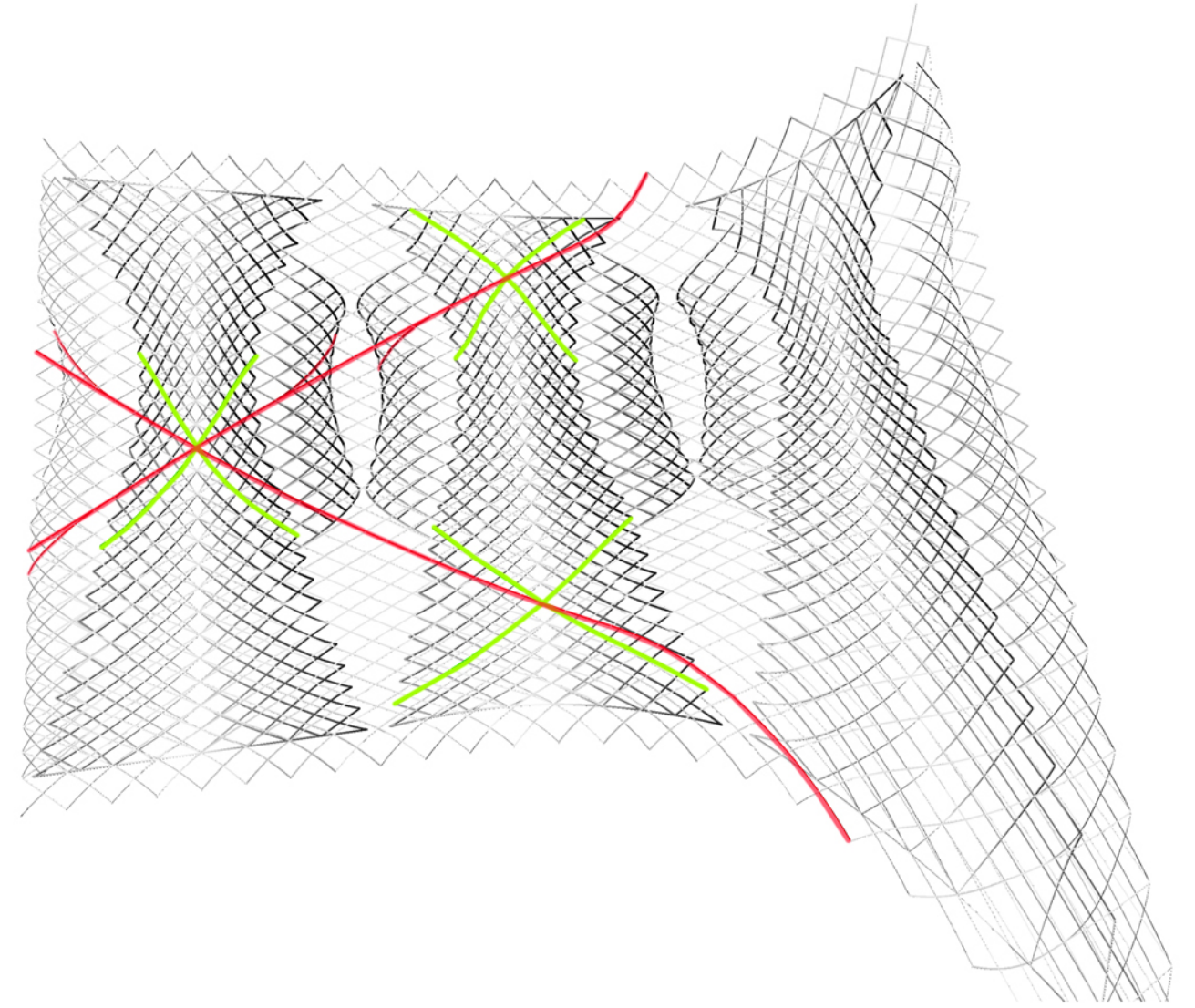
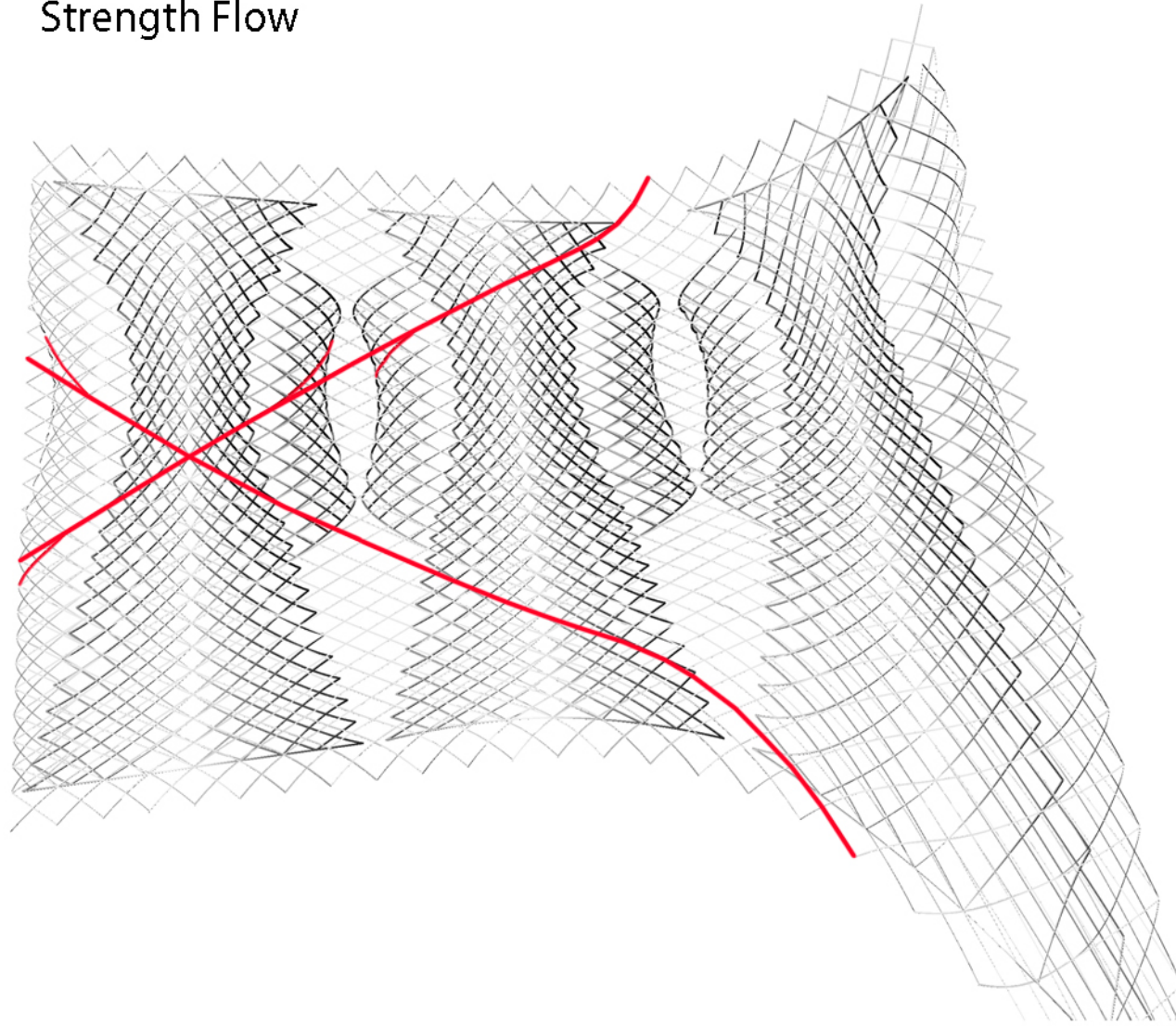
Small Arch



Big Arch and Roof

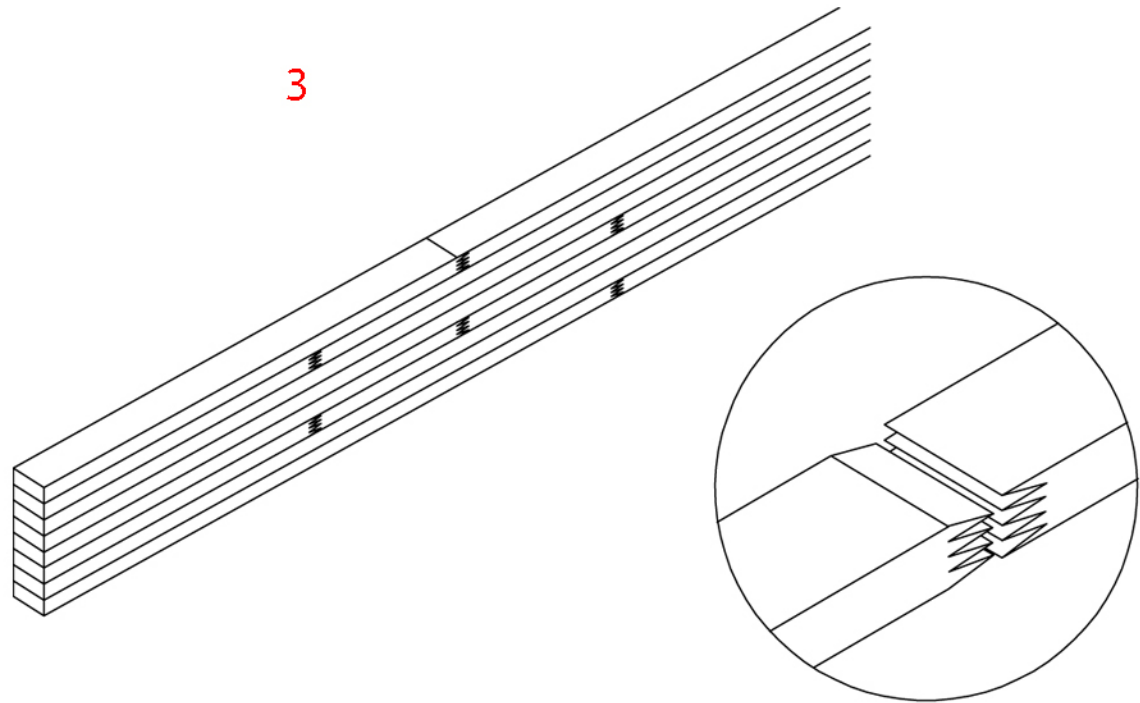
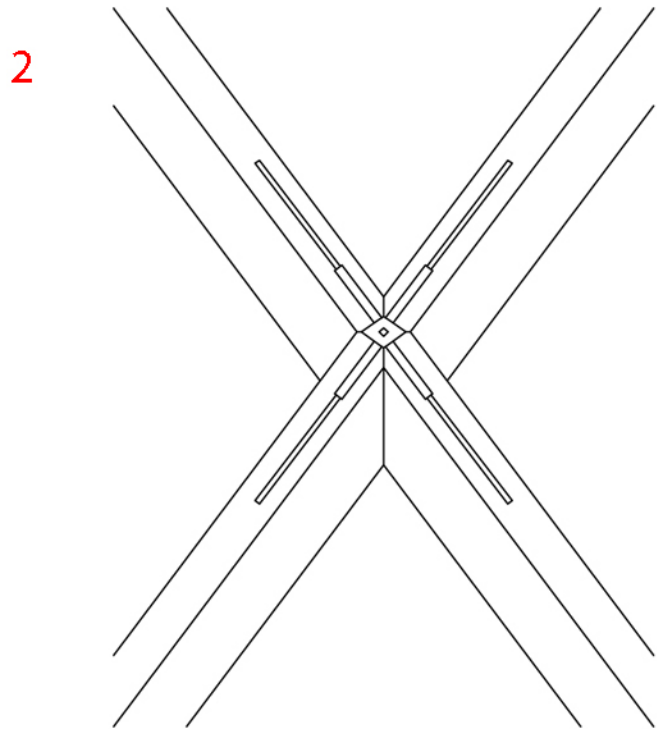
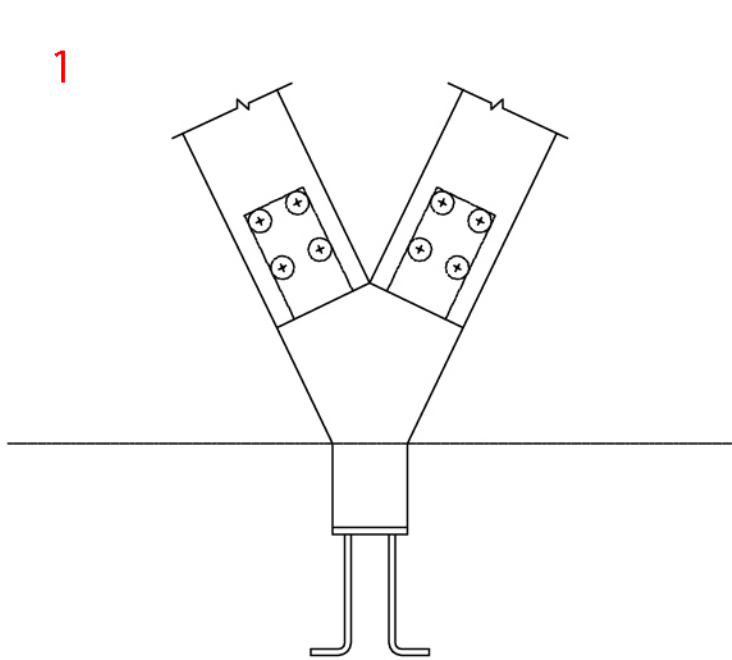
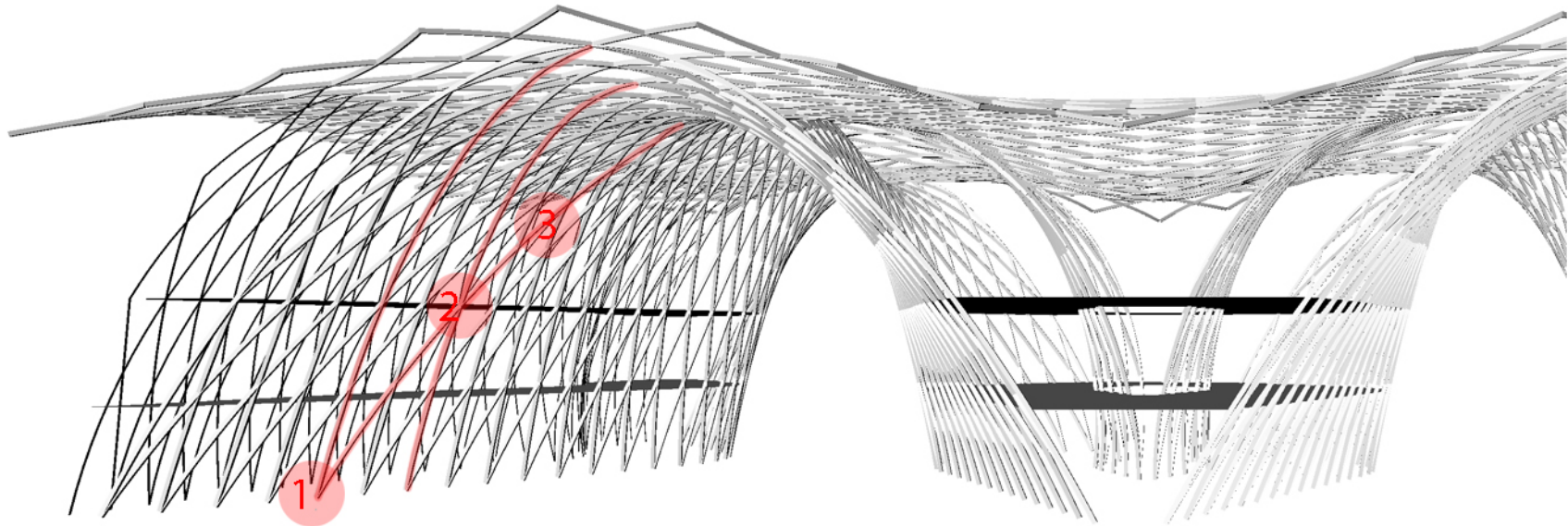
Structure

Strength Flow

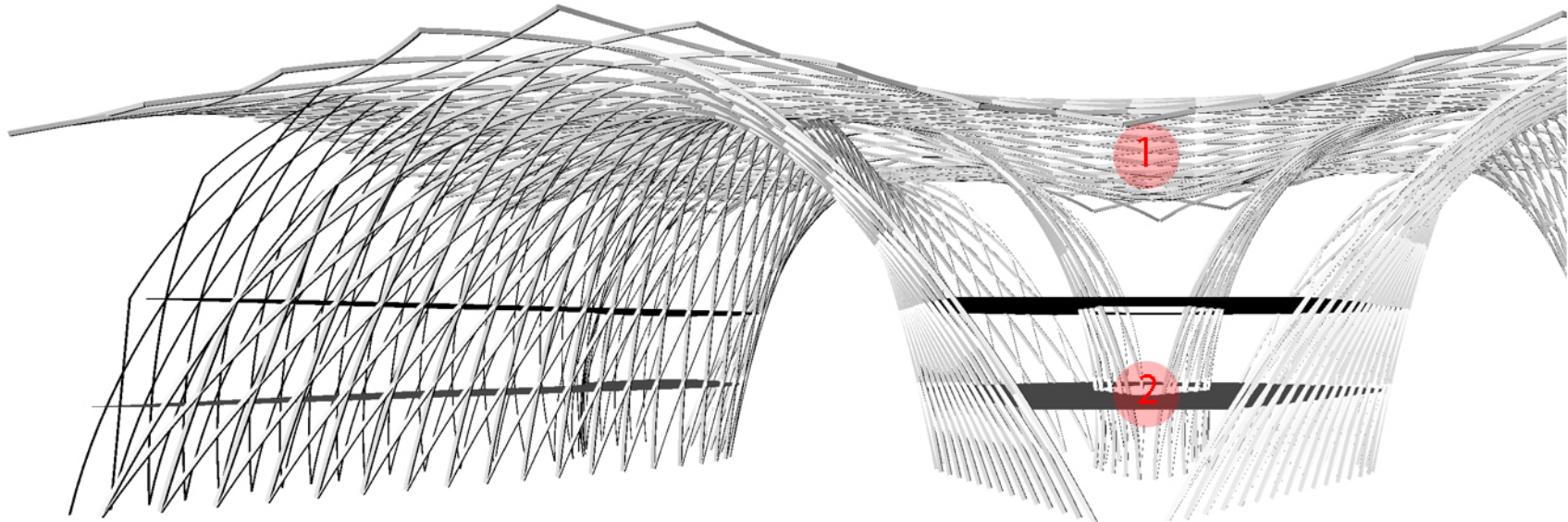


Structure

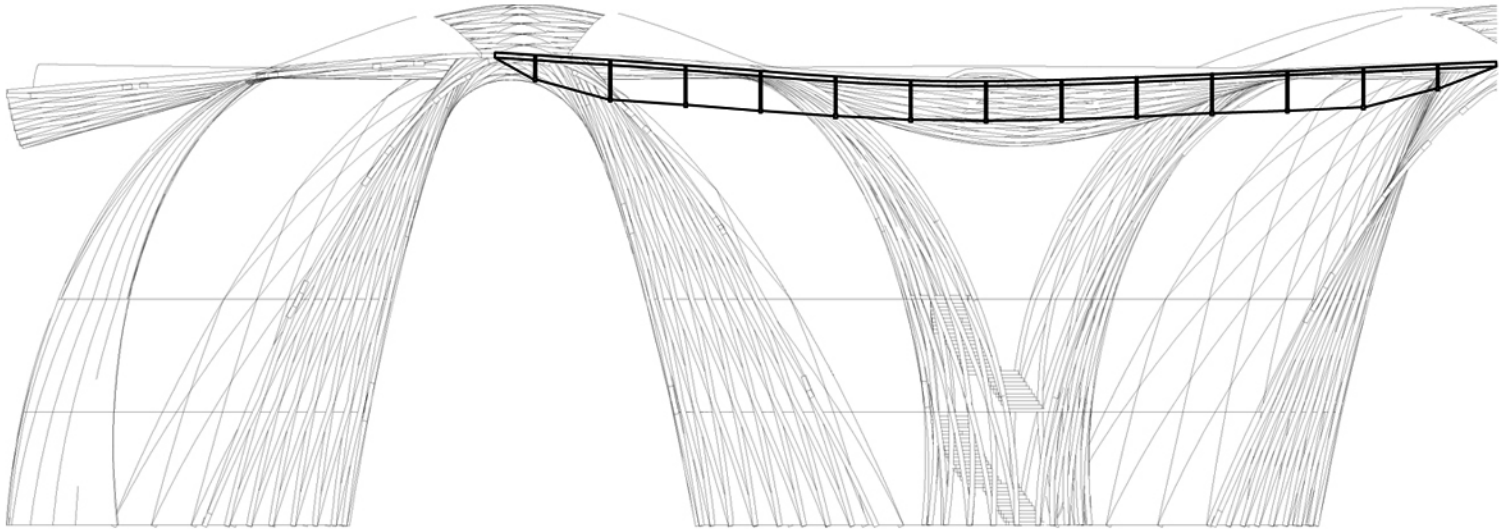
Details



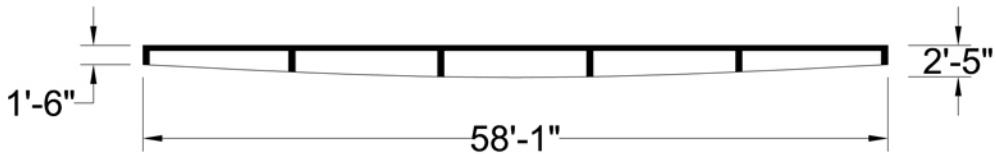
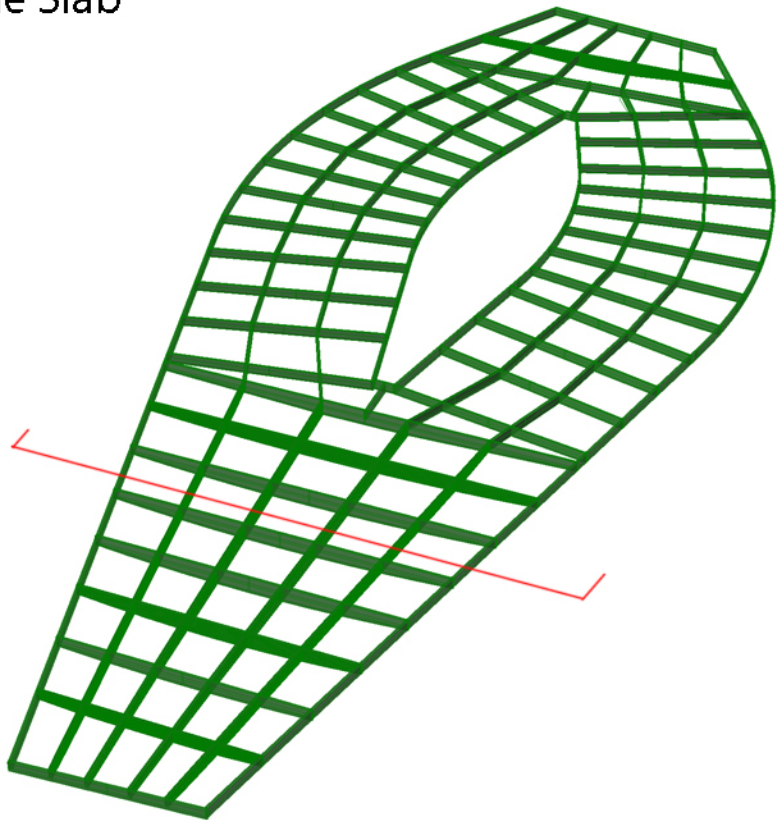
Structure

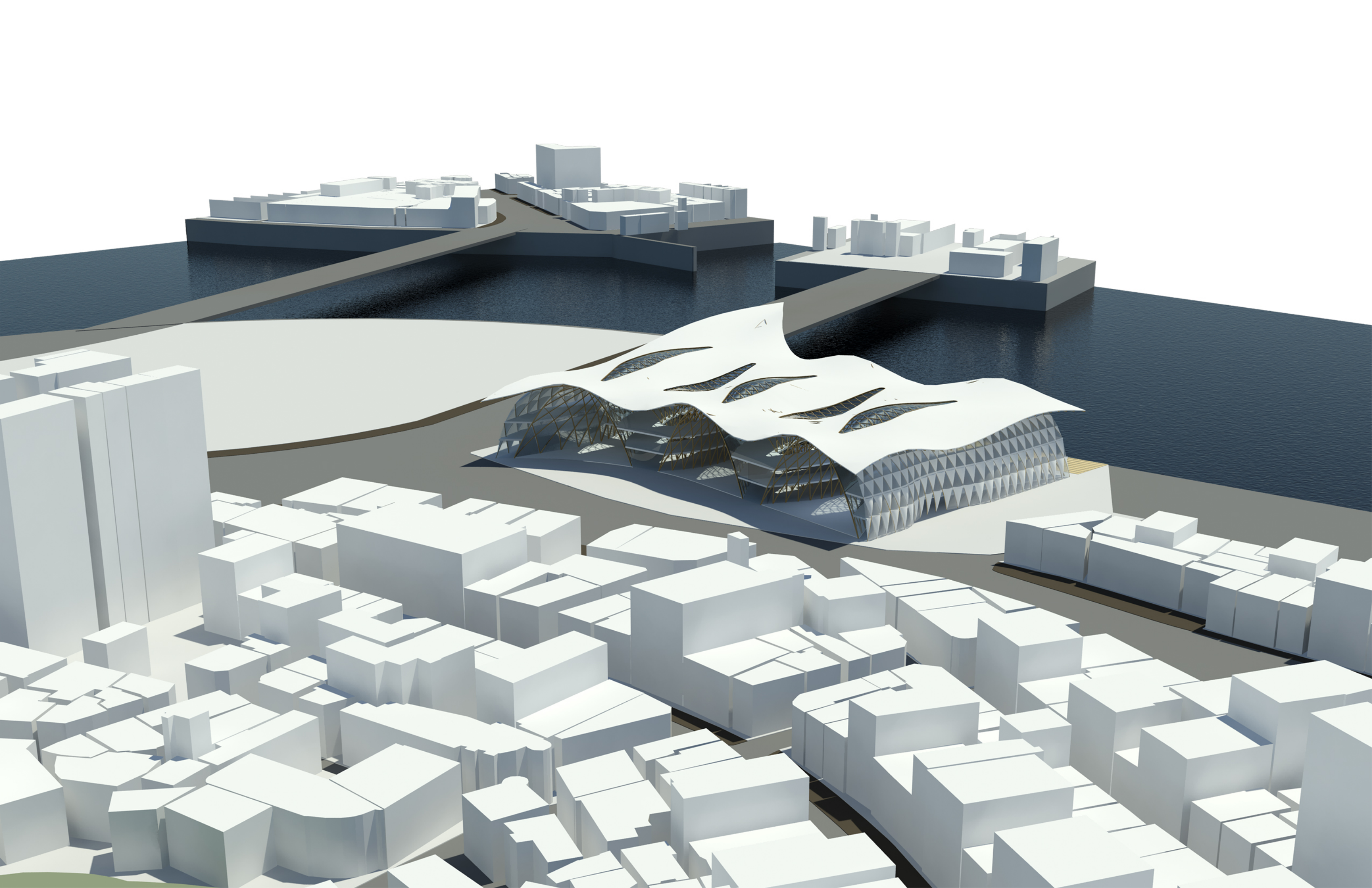


1 Cable



2 Waffle Slab







Open Market



