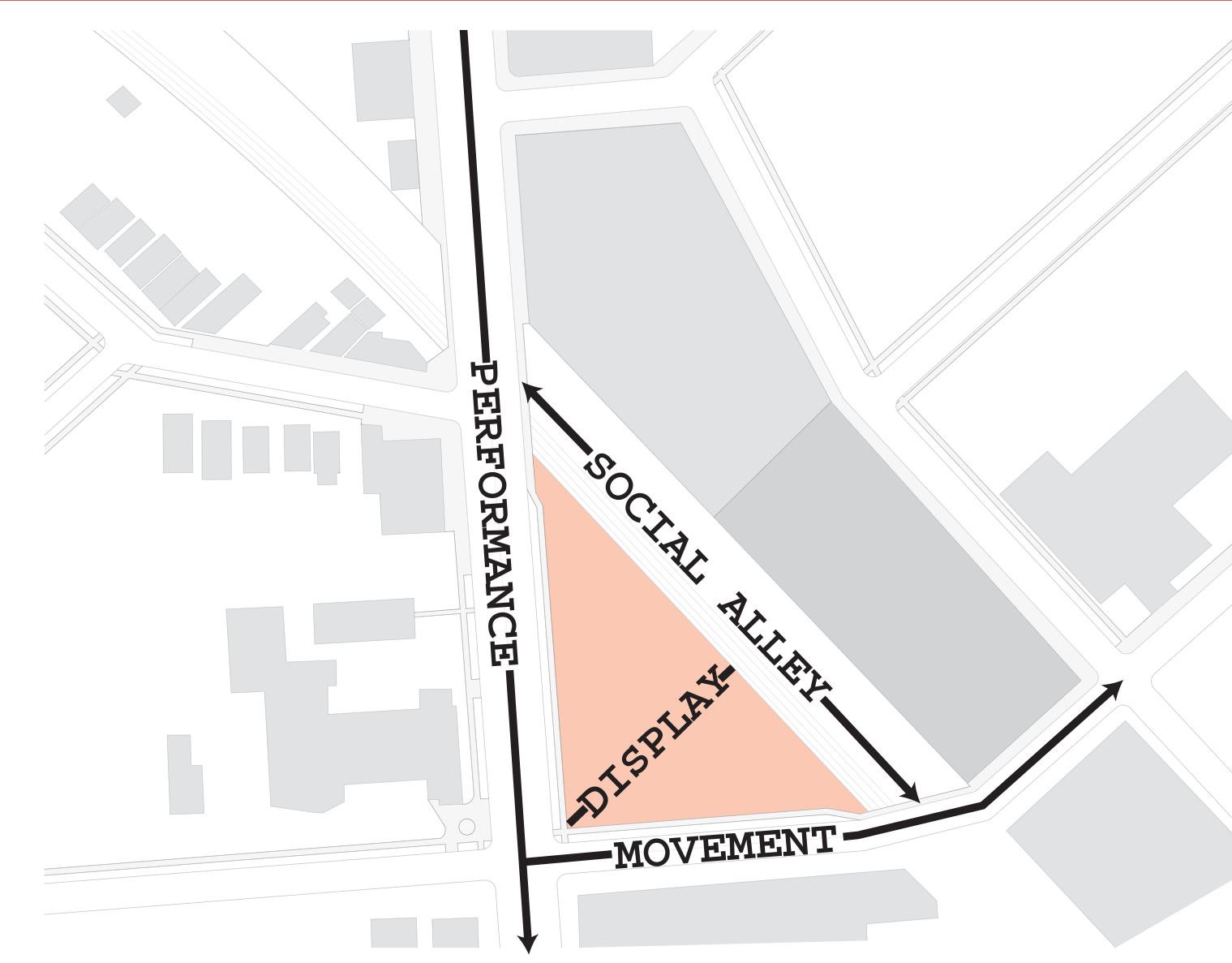


SOCIAL ALLEY

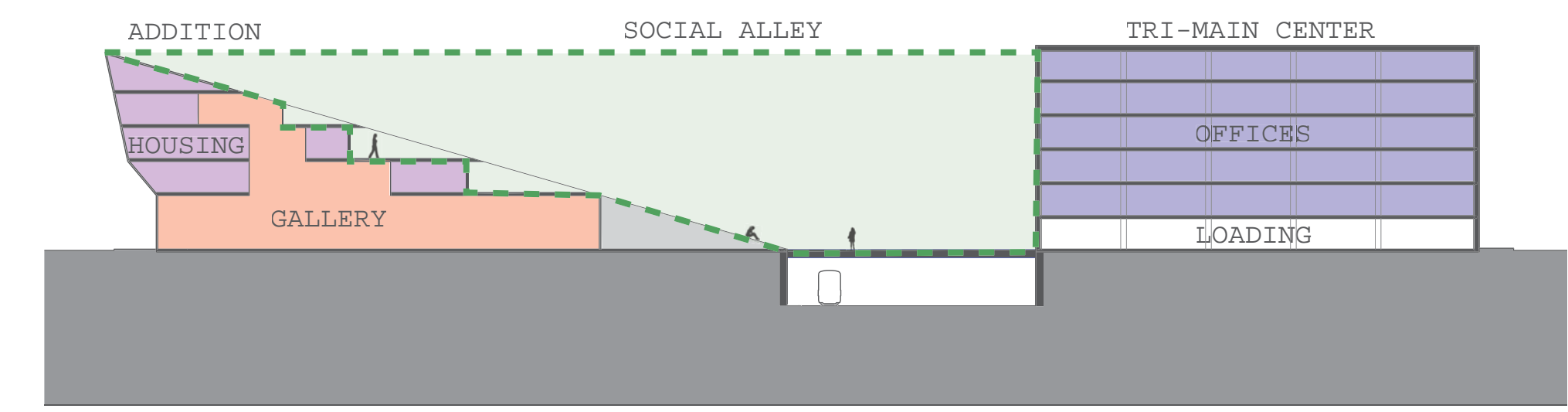
SITE LOCATION: BUFFALO, NEW YORK

With a growing population of Buffalo students, this project looked at rejuvenating Main Street to become a 'Collegiate Strip'. Renovating existing structures or re-building along Main Street will provide new social, artistic, athletic, and academic nodes along this Strip. The site chosen at the intersection of Main Street and Jewett Avenue acts as a new arts node that corresponds with the existing adjacent building: The Tri-Main Center. The existing railway is covered to create a new social infrastructure along the Collegiate Strip that also connects Main Street and Jewett Avenue. This space acts as a social alley where students can showcase their talents, interact with the activities of the Tri-Main Center, watch a film, or even ice skate during Buffalo's winter months. This node serves as a prototype for the remainder of the Collegiate Strip, so as the student population increases, the Main Street strip also flourishes.



SOCIAL ALLEY

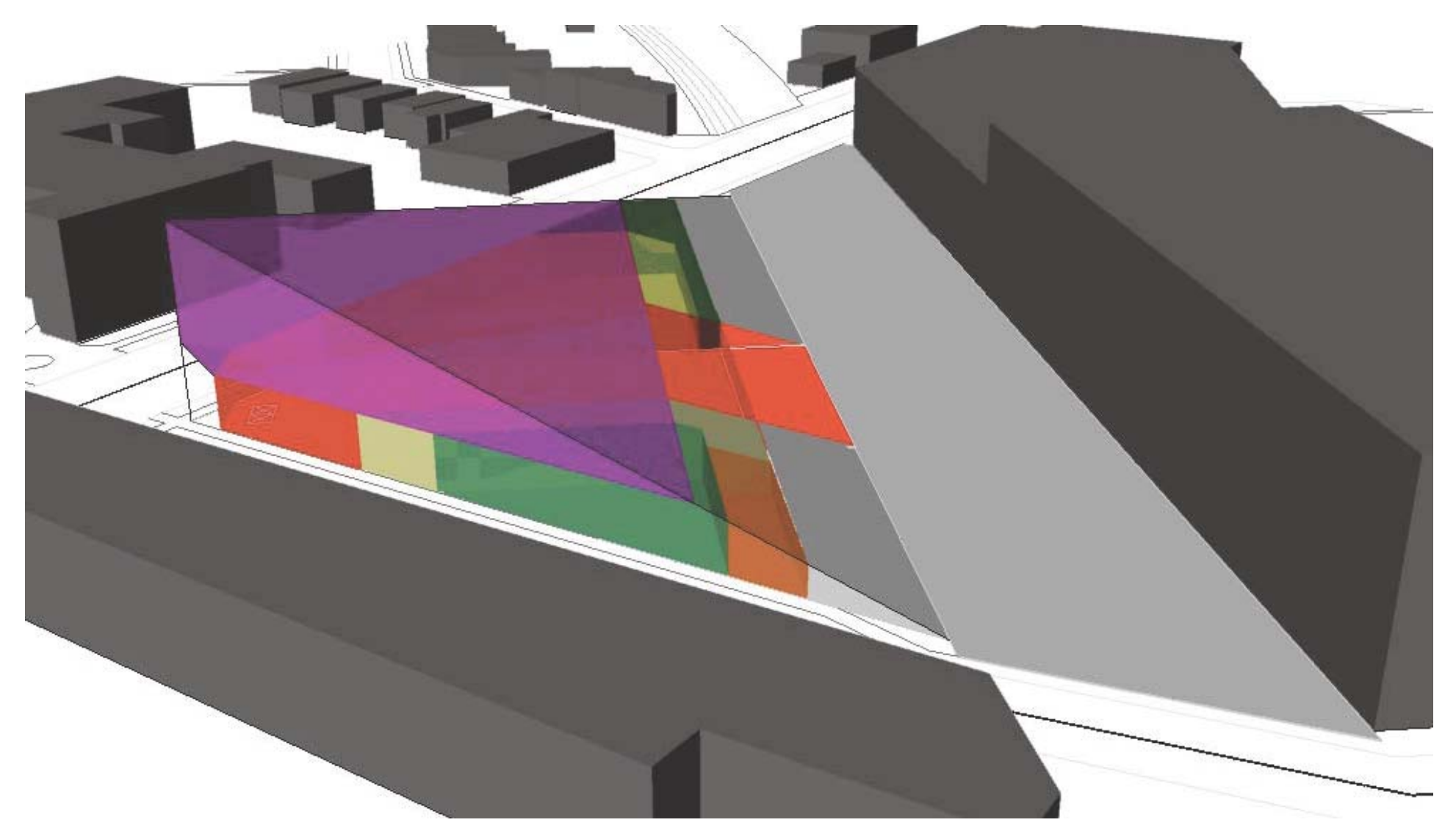
1. a passage, as through a continuous row of houses, permitting access from the street to backyards, garages, etc.
2. a narrow back street.
3. a walk, as in a garden, enclosed with hedges or shrubbery



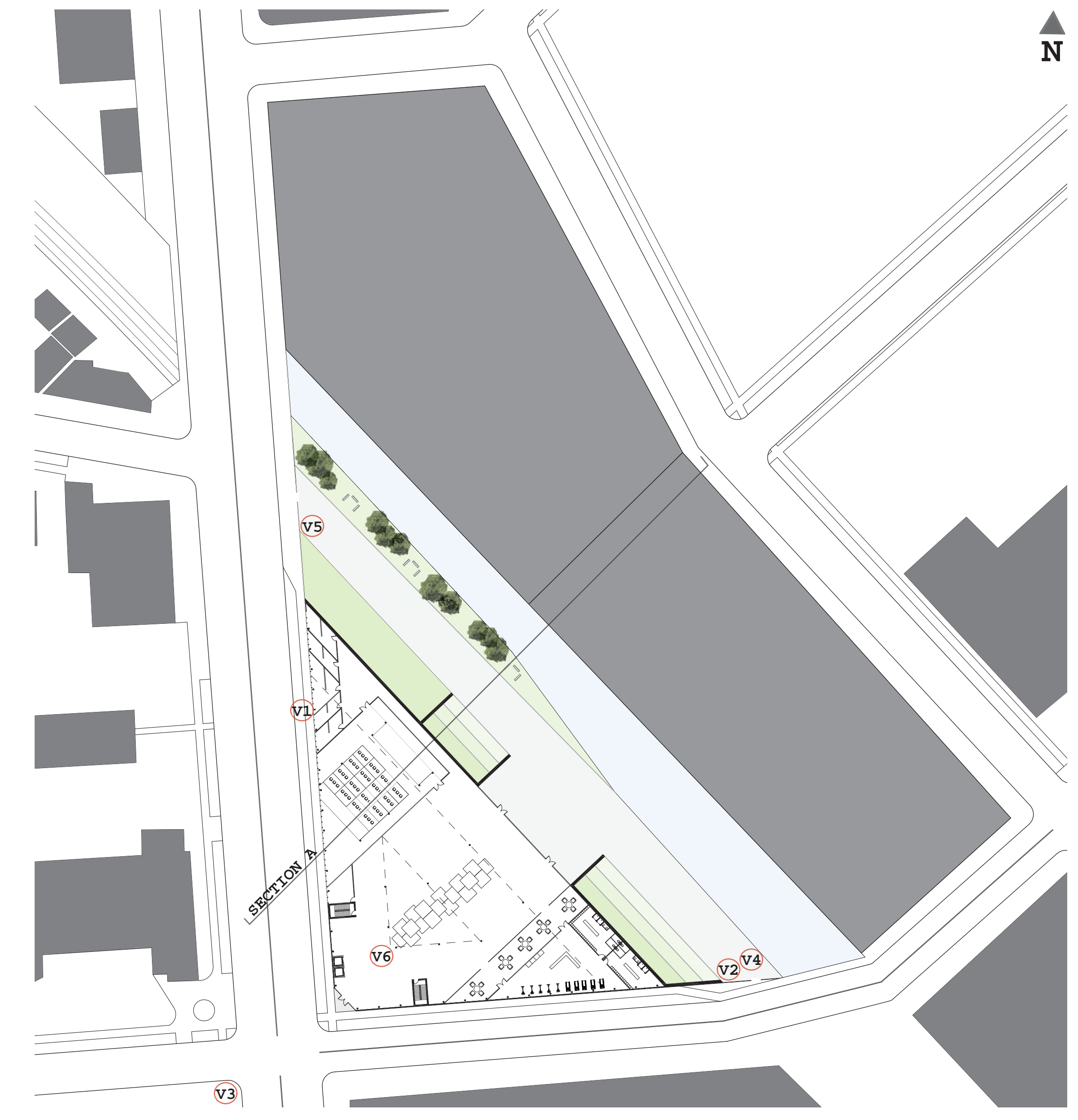
PROGRAM

KEY:

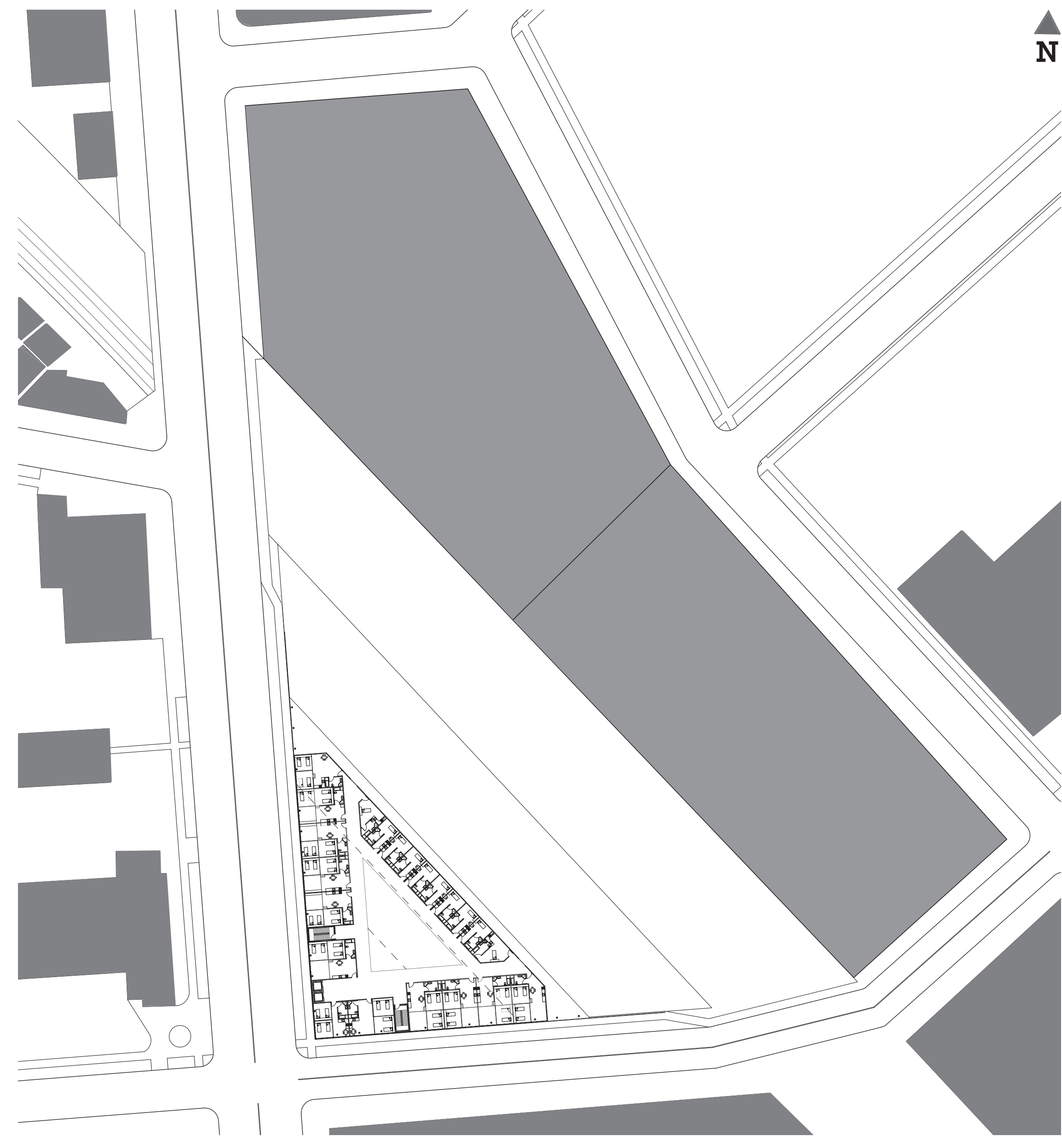
- HOUSING
- GALLERY
- AUDITORIUM
- SOCIAL
- GYM
- LOCKER ROOM
- MUSIC STUDIOS
- SOCIAL ALLEY



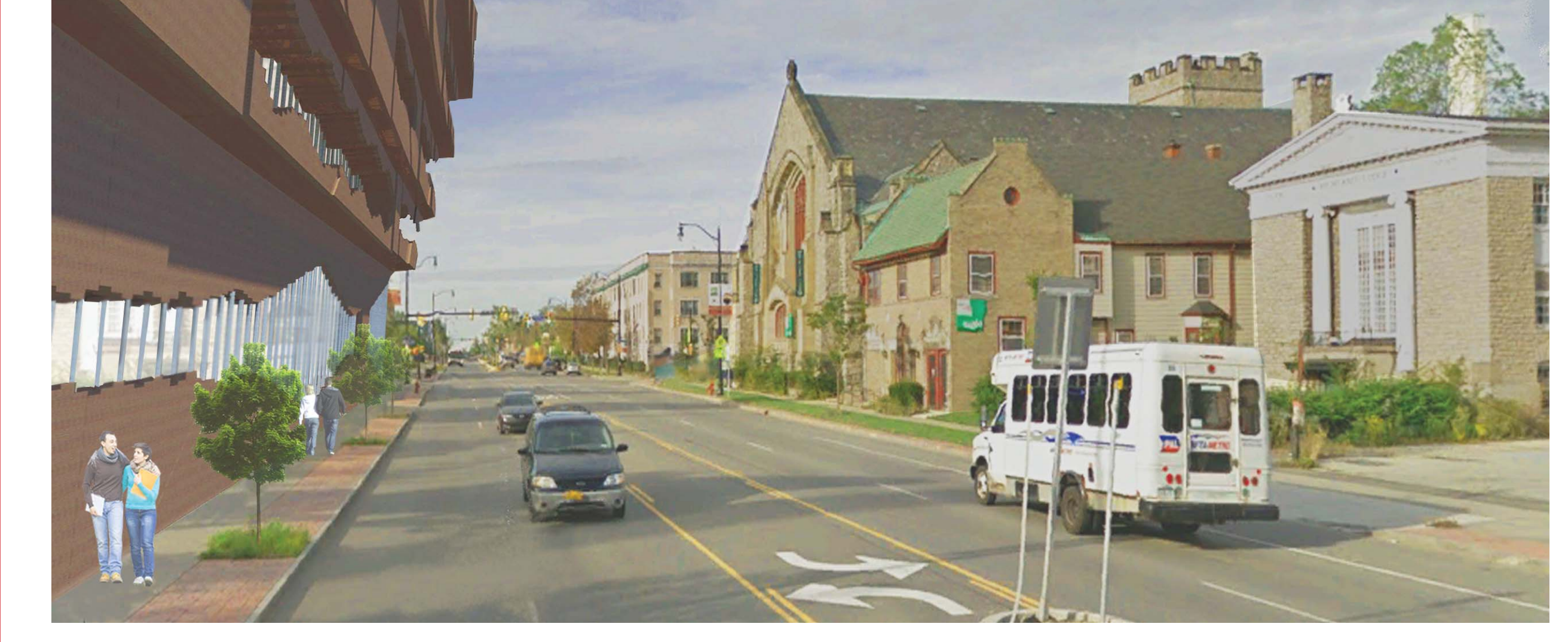
GROUND FLOOR PLAN



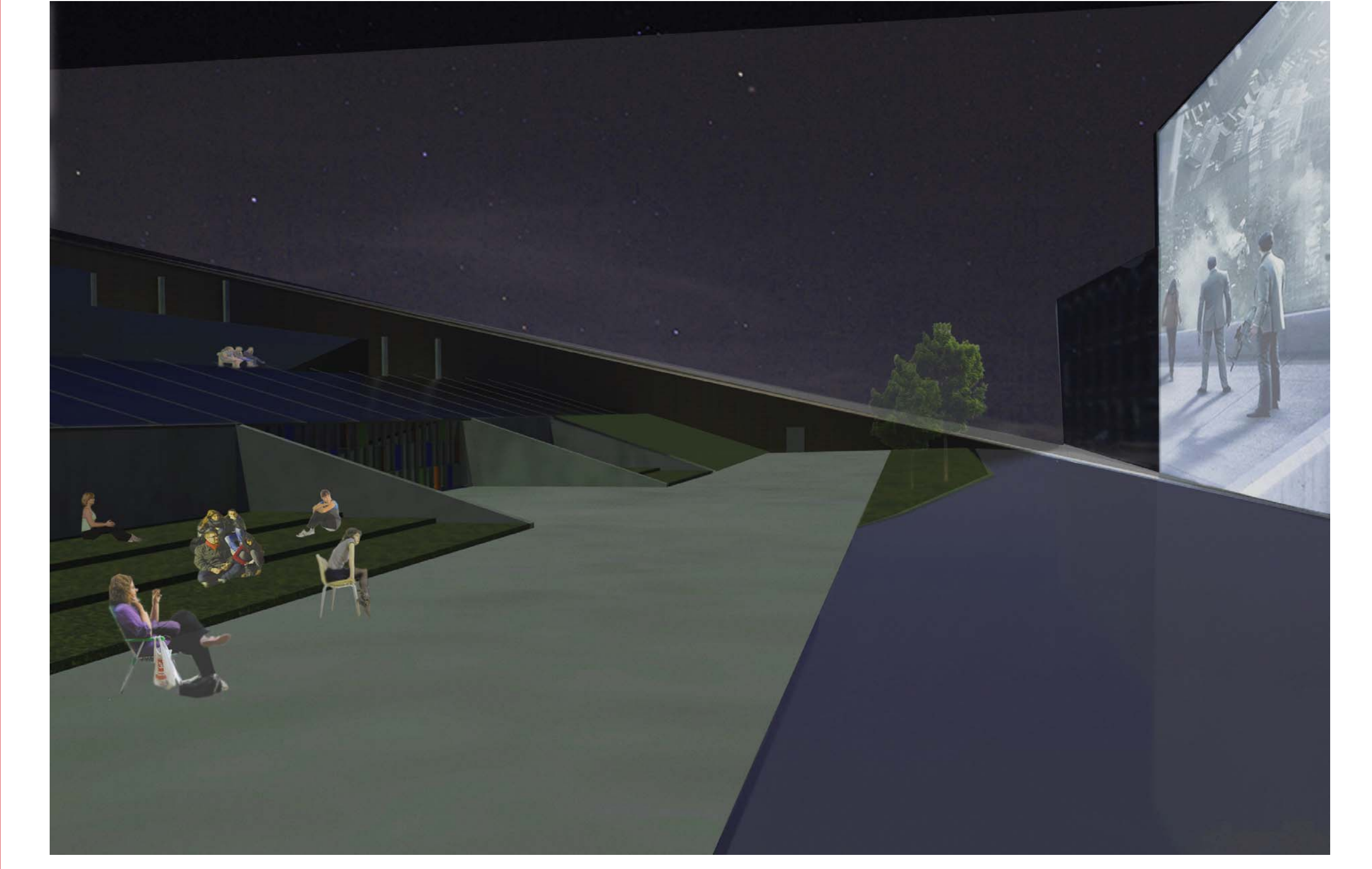
SECOND FLOOR PLAN: HOUSING



V1: MAIN STREET VIEW LOOKING SOUTH



V2: SOCIAL ALLEY AT NIGHT



SECTION A

