



ALL

© by Jyoti Srinastava



SEASON



RECREATION

ERIC GREBLIUNAS - MASTERS PROJECT

WHAT?

ACTIVE/ INACTIVE

SEASONS

LOST OPORTUNITIES

PROGRAM

SITE

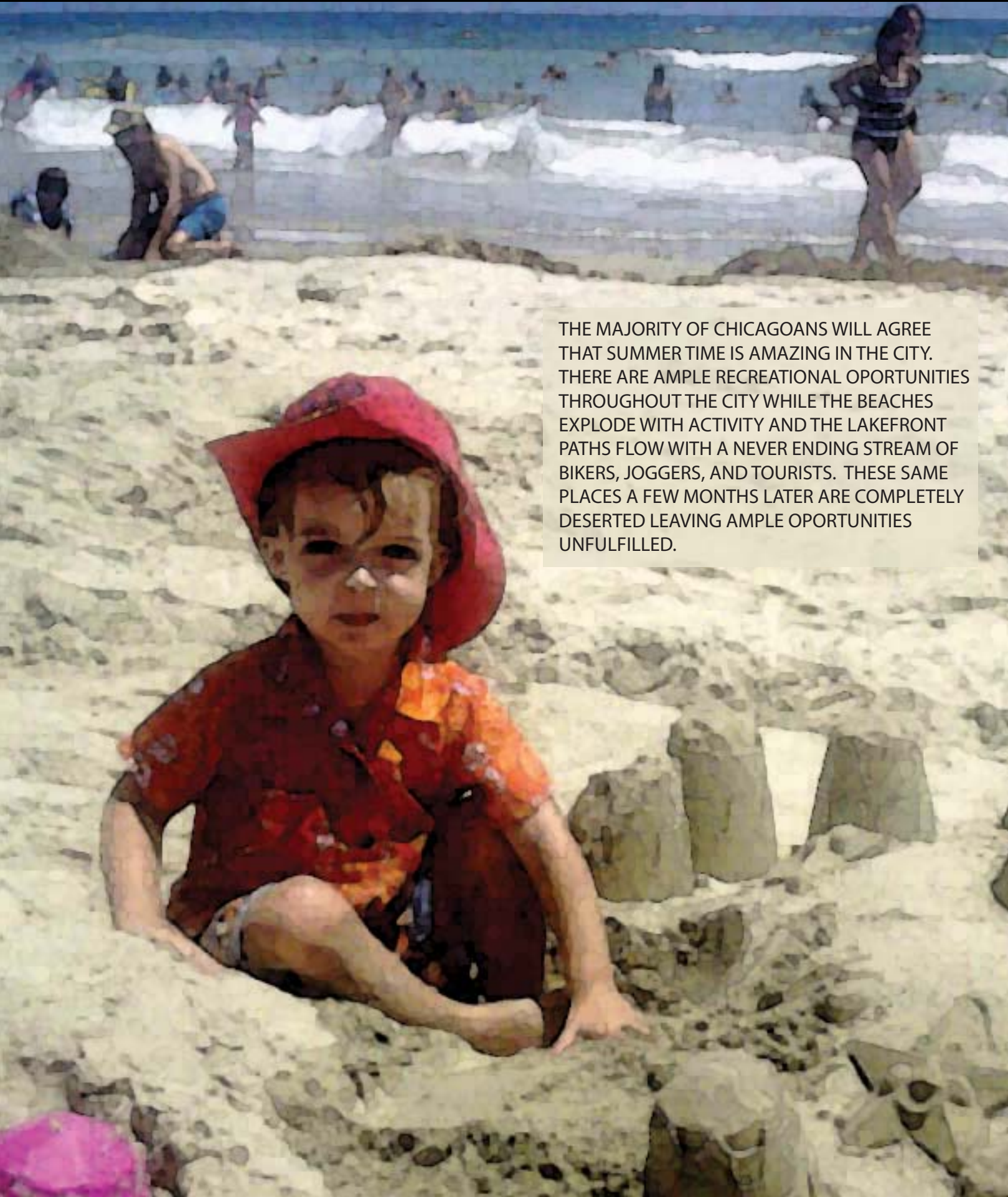
STUDIES

PROJECT

THE CENTER IS A CELEBRATION OF CHICAGO'S UNIQUE SEASONAL OPORTUNITIES AND WILL ENCOURAGE THE INHERANT ENTERTAINMENT NATURE PROVIDES.



CASE STATEMENT



THE MAJORITY OF CHICAGOANS WILL AGREE THAT SUMMER TIME IS AMAZING IN THE CITY. THERE ARE AMPLE RECREATIONAL OPORTUNITIES THROUGHOUT THE CITY WHILE THE BEACHES EXPLODE WITH ACTIVITY AND THE LAKEFRONT PATHS FLOW WITH A NEVER ENDING STREAM OF BIKERS, JOGGERS, AND TOURISTS. THESE SAME PLACES A FEW MONTHS LATER ARE COMPLETELY DESERTED LEAVING AMPLE OPORTUNITIES UNFULFILLED.

CASE STATEMENT



THE CAUSE OF THIS DESERTION IS DUE TO PEOPLE NOT HAVING THE EXPOSURE OR OPORTUNITY TO ENJOY THE WONDERFUL CYCLE OF SEASONS THIS CITY OFFERS. CHICAGO'S RECREATIONAL SEASON IS FOCUSED ENTIRELY ON THE SUMMER WHEN THE EVIDENCE OF PEOPLE WANTING TO ENJOY OTHER SEASONS IS RIGHT IN FRONT OF THEM AS CAN BE SEEN AT MANY OF THE OUTDOOR ICE RINKS. ONE SIMPLY HAS TO LOOK AT CHILDREN SLEDDING DOWN A HILL COVERED IN SNOW GRINNING EAR TO EAR TO SEE THAT WINTER IS MORE THEN DREADING SNOW STORM TRAFFIC JAMS TO THOSE WHOM HAVE SOMETHING TO LOOK FORWARD TOO.

PROJECT GOALS

- CREATE AN APPRECIATION FOR CHICAGO'S DIVERSE SEASONAL CYCLE
- PROVIDE RECREATIONAL OPORTUNITIES WHICH ARE LACKING IN THE CITY THROUGHOUT THE YEAR
- DEVELOP A CLOSER CONNECTION AND BETTER UNDERSTANDING BETWEEN PEOPLE AND THE ENVIRONMENT

GUIDING PRINCIPLES

- EVEY ASPECT OF THE PROJECT IS TO CELEBRATE CHICAGO'S DIVERSE SEASONS
- CREATE ACCESSIBLE OPORTUNITIES FOR UNIQUE EXPERIENCES
- RE-ESTABLISH THE CONNECTION BETWEEN NATURE AND THE BUILT ENVIRONMENT
- ALL SPACES TO HAVE USE THROUGHOUT THE YEAR - MULTIUSE
- BECOME A DESTINATION FOR THE COMMUNITY AND CITY
- PROVIDE FOR ALL AGES



ACTIVE

INACTIVE

PEOPLE BLANKET THE BEACHES IN THE SUMMER...

SNOW BLANKETS THE BEACHES IN THE WINTER...



ACTIVE

INACTIVE

CHILDREN SIT IN SWINGS ALL SUMMER LONG...

SNOW SITS IN SWINGS ALL WINTER LONG...

...IT DOESNT HAVE TO BE THIS WAY

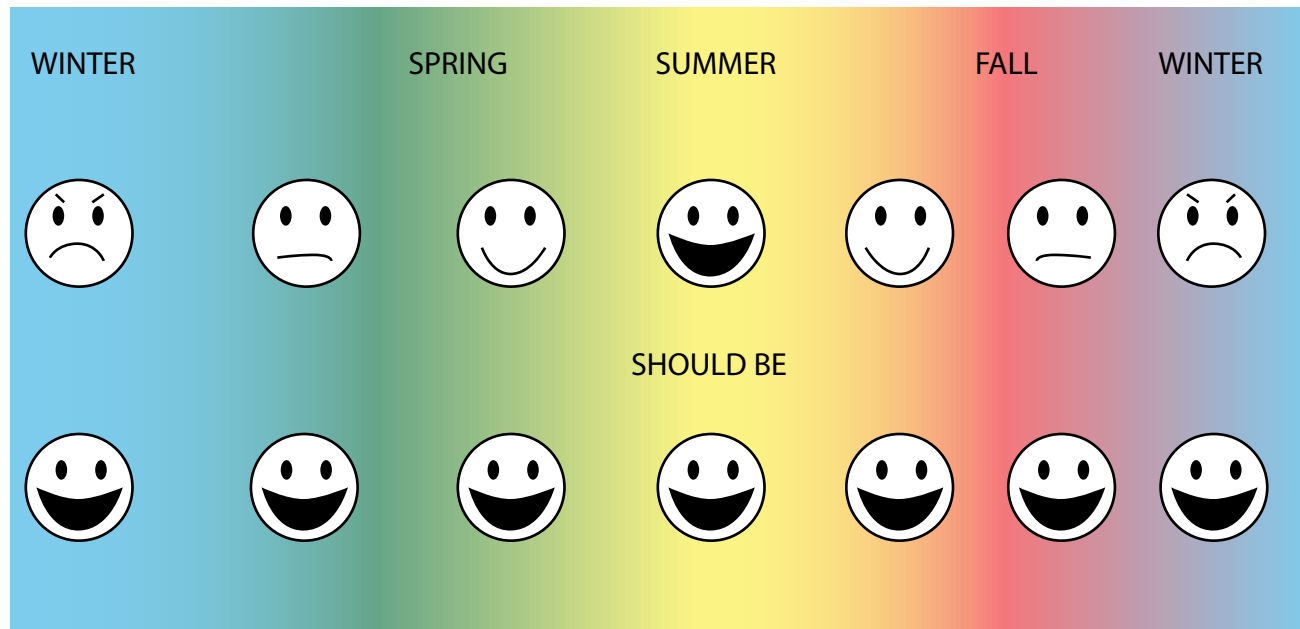
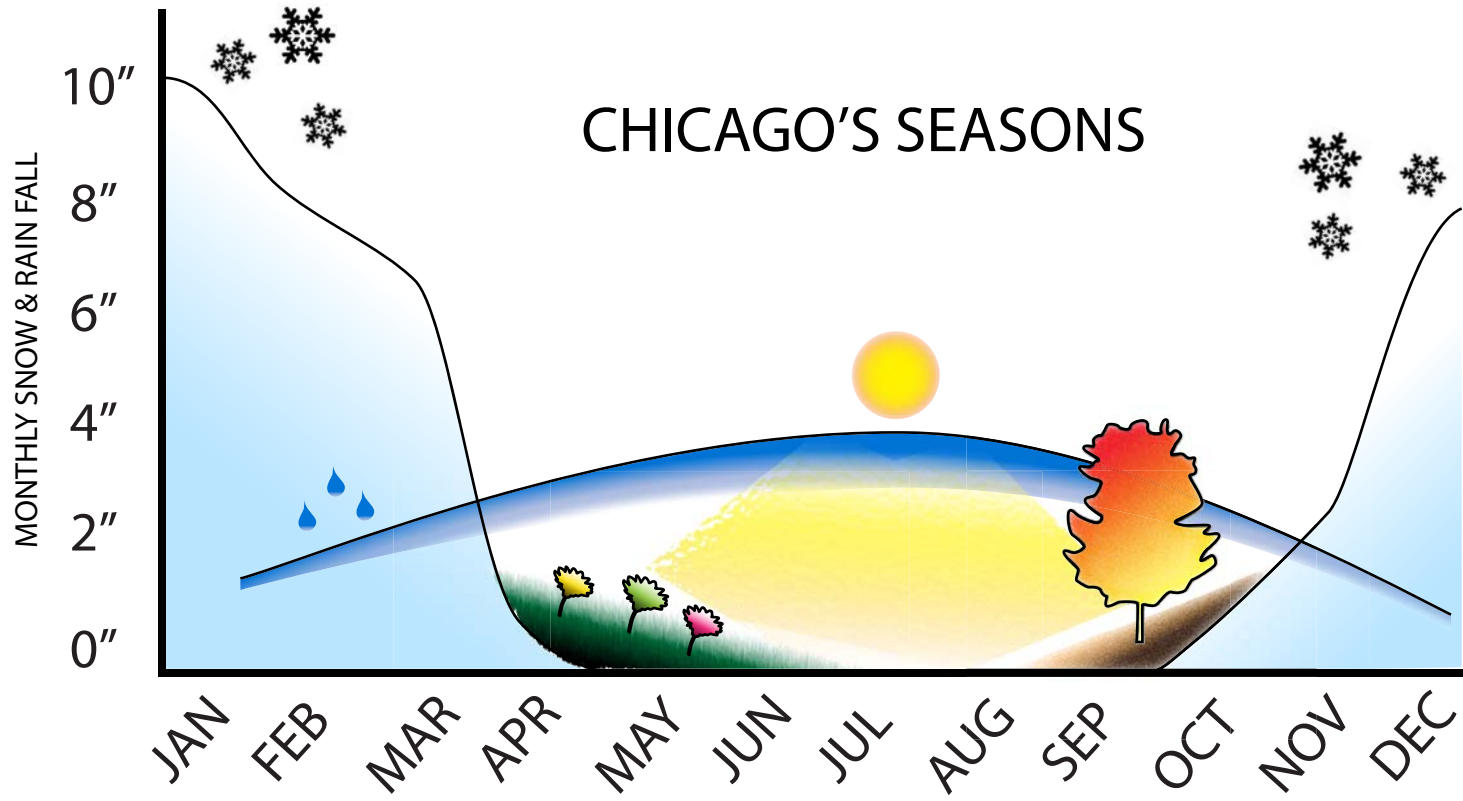




EVERY WARM WEATHER ACTIVITY..

HAS A COLD WEATHER COUNTER PART..

SEASONS



CHICAGO EXPERIENCES EACH SEASON IN AN UNIQUE WAY BUT ONLY HAS EASY ACCESS TO ACTIVITIES WHICH WARMER WEATHER FACILITATES

ASPEN'S APPRECIATION OF SEASONS



AMPLE ACCESS TO UNIQUE RECREATIONAL ACTIVITY THROUGHOUT EVERY SEASON

CHICAGO'S APPRECIATION OF SEASONS

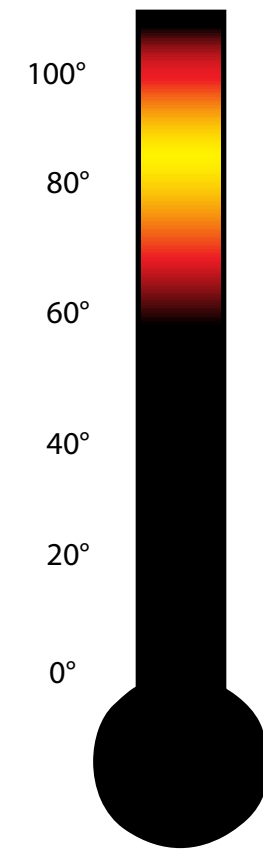
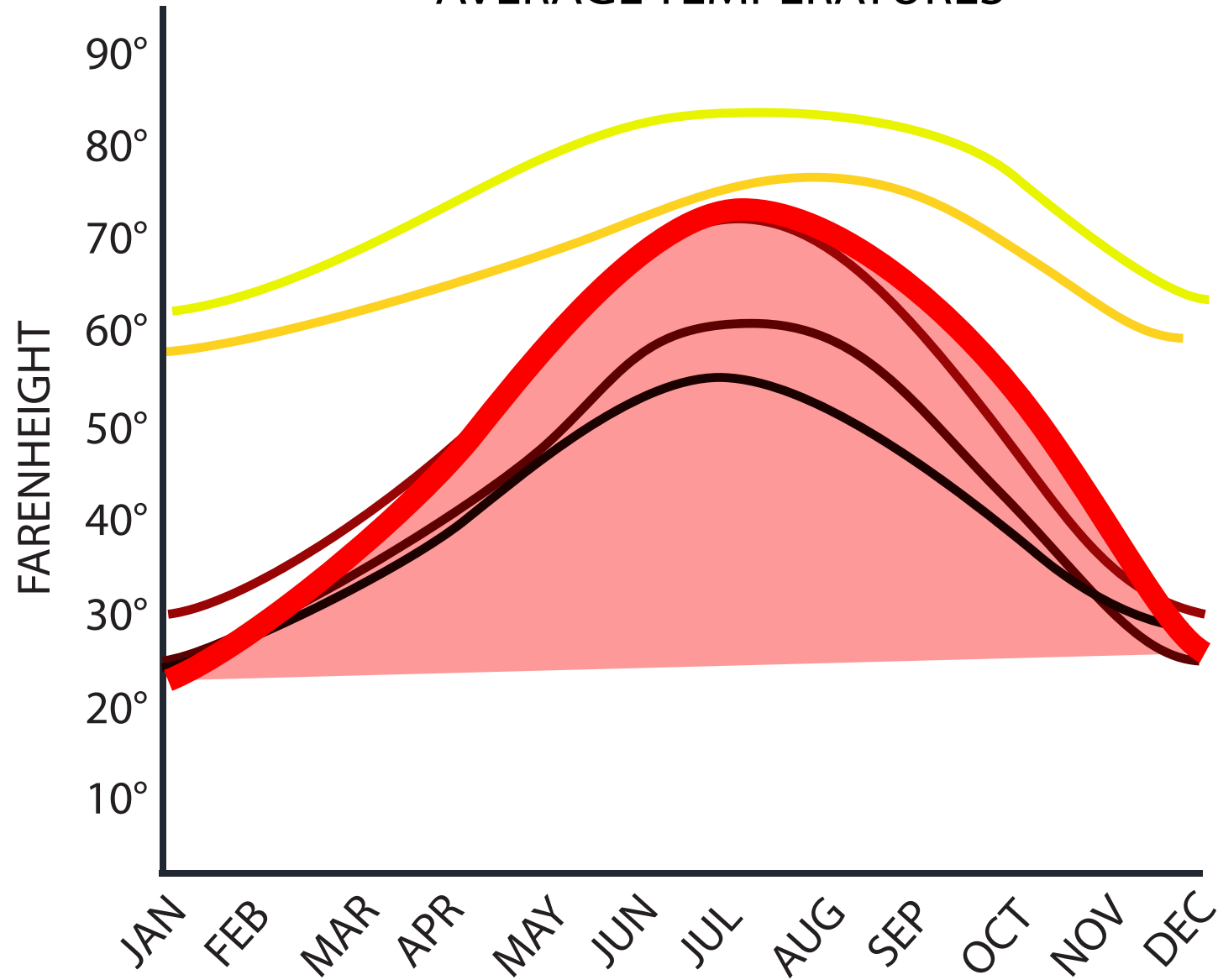


LIMITED ACCESS TO UNIQUE RECREATIONAL ACTIVITY THROUGH THE WARM SEASONS AND ALMOST NONE DURING THE WINTER

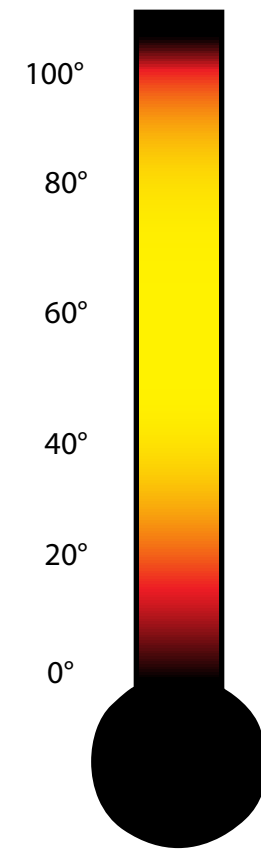
LOST OPPORTUNITIES

ACTIVE RECREATION CLIMATE RANGE

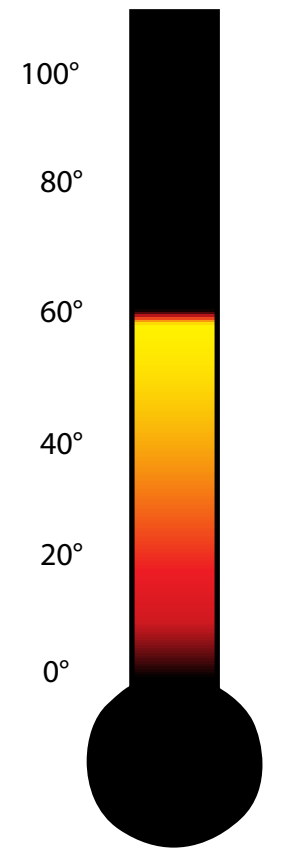
AVERAGE TEMPERATURES



CHICAGO, IL



ASPEN, CO



JUNEAU, AL

CHICAGO'S LATITUDE OF 41.90 PROVIDES AN EQUAL DISTRIBUTION OF AN EXTREMELY DIVERSE RANGE OF TEMPERATURES

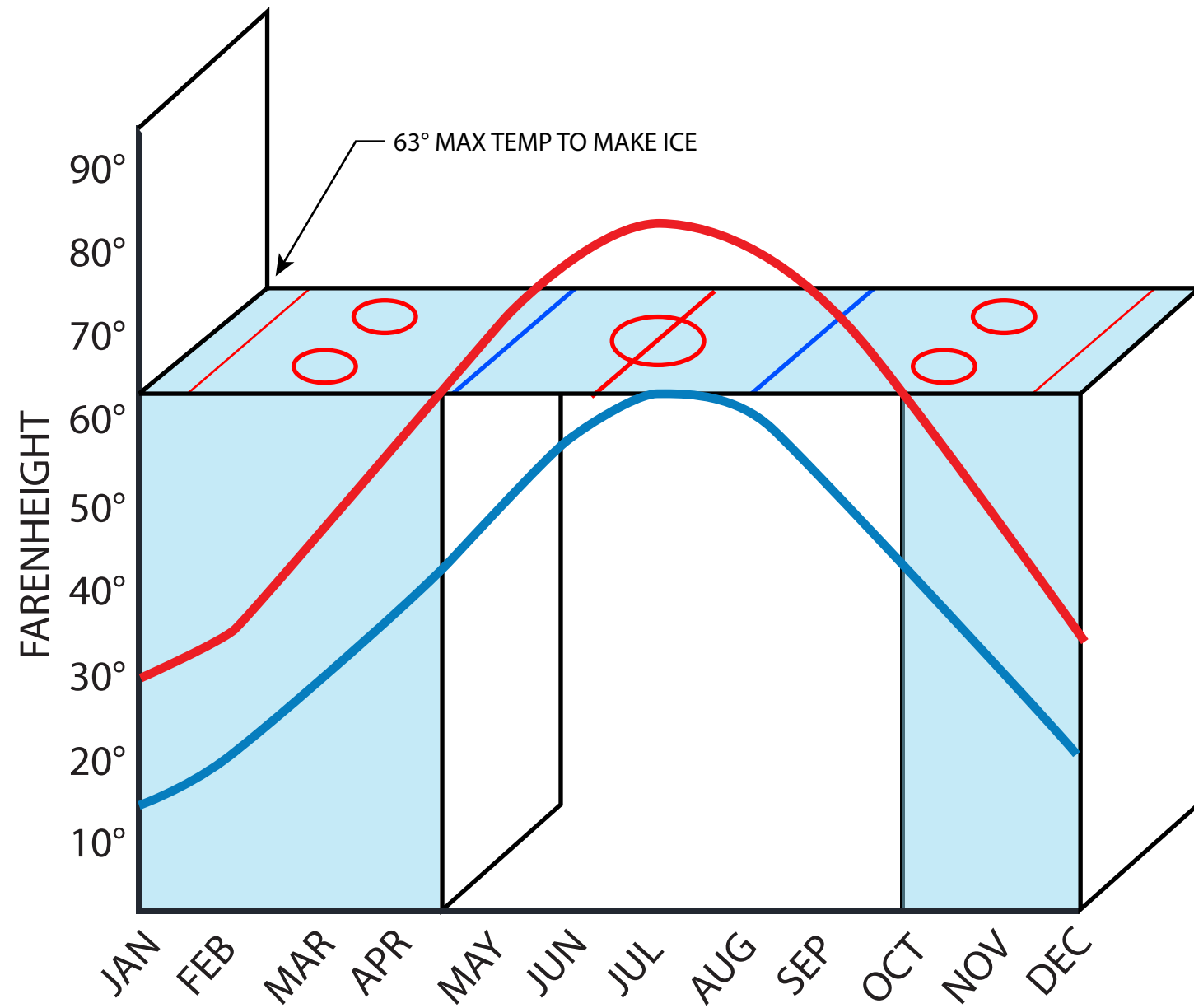
ASPEN HAS THE INFRASTRUCTURE TO SUPPORT YEAR ROUND ACTIVITY AND CAPITALIZES ON IT WITH PROGRAM HAPPENING ALL SEASON LONG. EVEN CITIES IN DRASTICALLY COLDER CLIMATES ENJOY A LARGER SPECTRUM OF THE TEMPERATURE RANGE. CHICAGO IS MISSING ITS OWN UNIQUE SEASONAL OPPORTUNITIES.

- TAMPA, FL
- SAN FRANCISCO, CA
- CHICAGO, IL
- DENVER, CO
- ASPEN, CO
- JUNEAU, AL

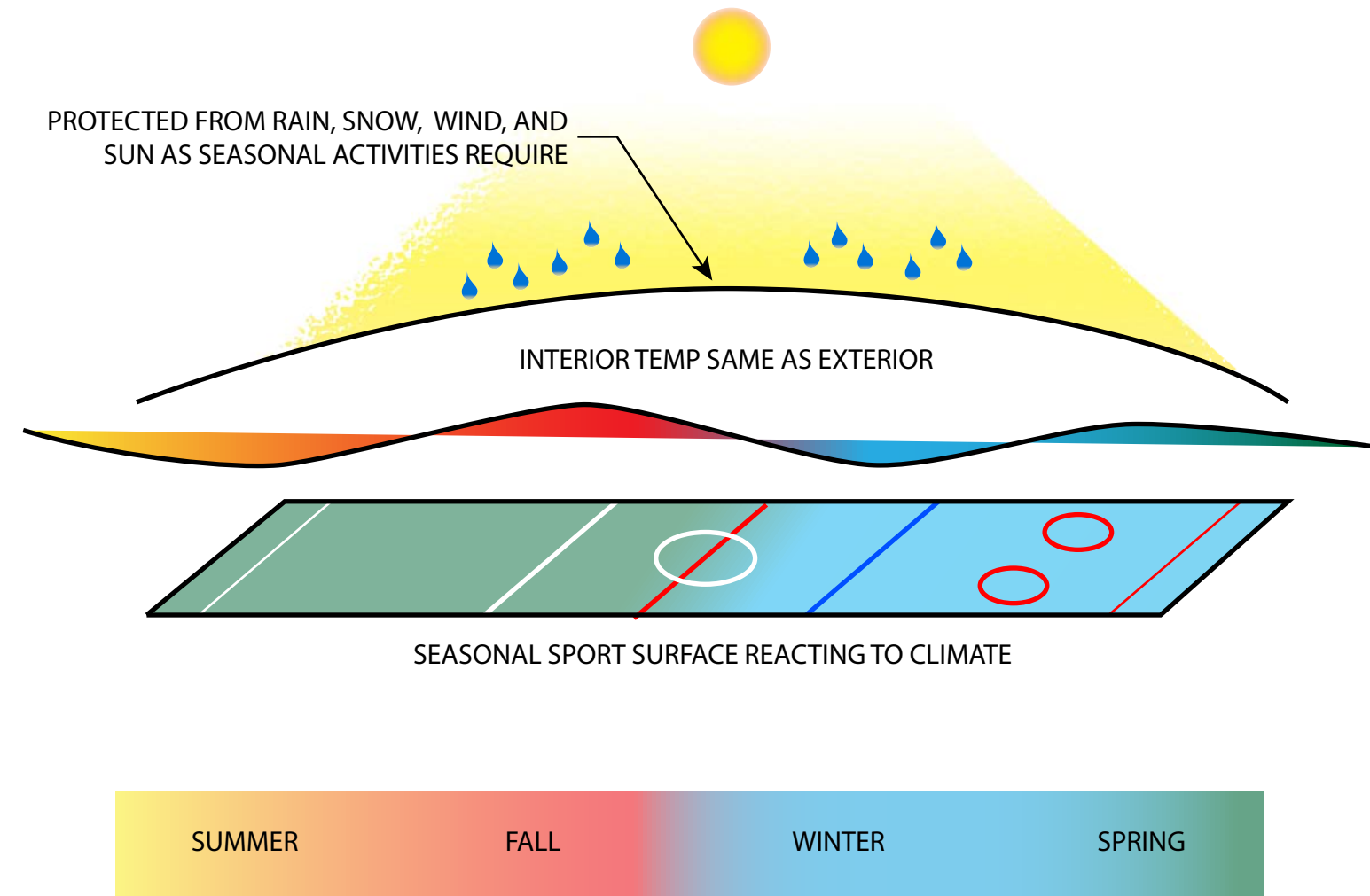
- HIGH ACTIVITY ■
- LOW ACTIVITY ■

OUTDOOR RINK SEASONS

(MIN ENERGY USED)



MULTISEASONAL SPACE REQUIREMENTS



6 MONTHS GOOD WEATHER

6 MONTHS QUESTIONABLE WEATHER

AVERAGE HIGH TEMP

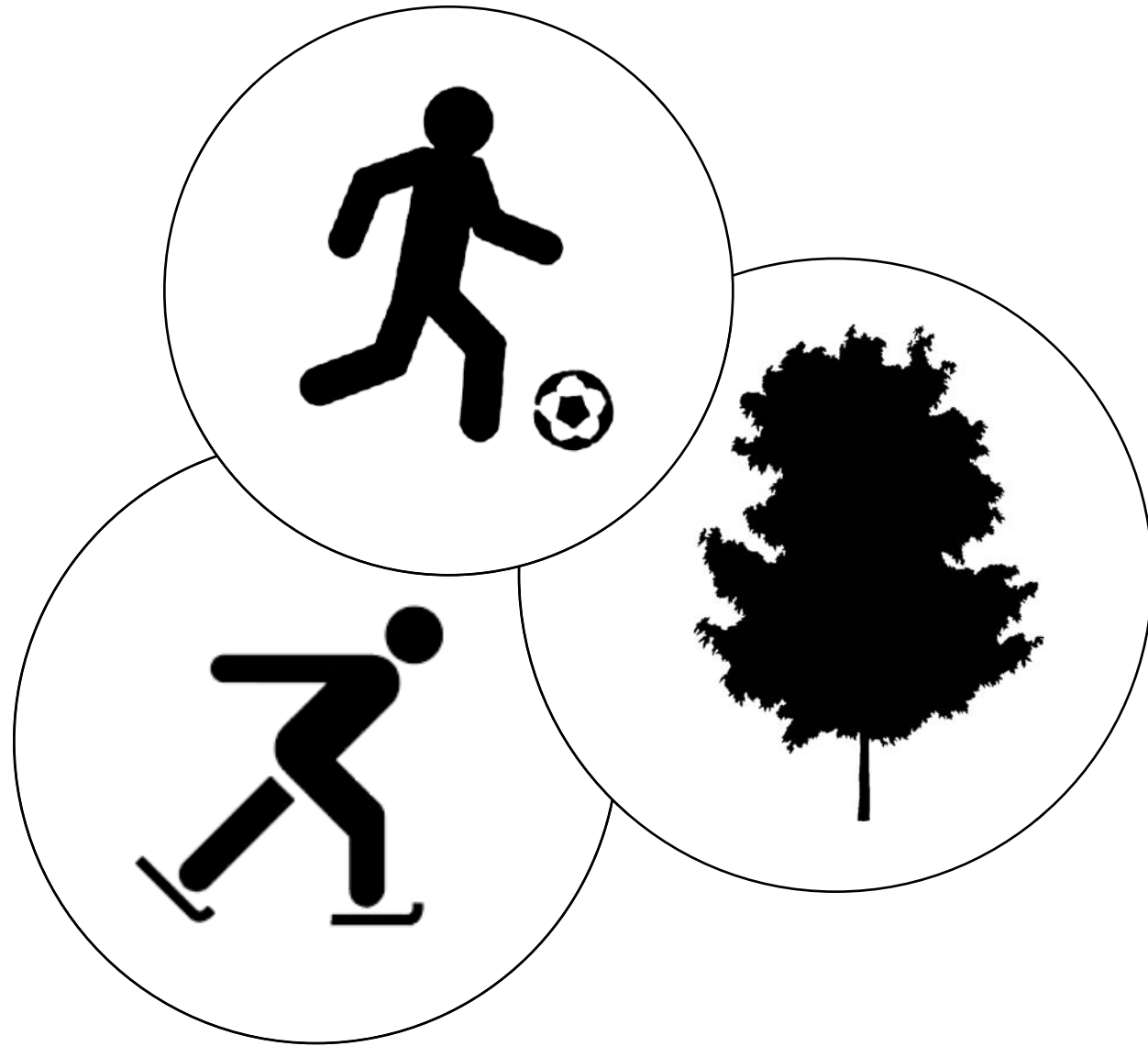


AVERAGE LOW TEMP



OPEN AIR RECREATION SPACE TO FORMALIZE SEASONAL ACTIVITIES

PROGRAM



STAKEHOLDERS

CHICAGO PARK DISTRICT
CHICAGO PUBLIC SCHOOLS
CALUMET CITY COMMUNITY
CHILDREN
ADULTS
ENVIRONMENT/ WILDLIFE
BUSINESSES
CHICAGOANS
TEACHERS
PARENTS
SPORTS CLUBS/ ORGANIZATIONS
DAY CARES
CTA
POLICE

MANY OF THE STAKEHOLDERS FORM THE USER BASE AND THEREFORE HAVE MUCH TO GAIN FROM THE CREATION OF THIS PROJECT

OWNER

CITY OF CHICAGO

SPONSORS

PLATINUM

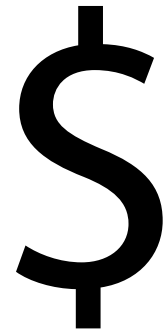
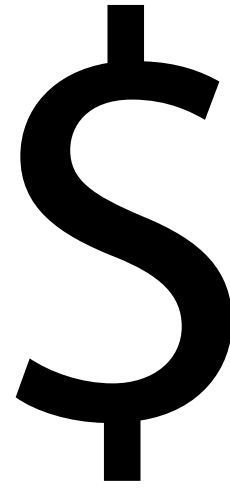
- CHICAGO PARK DISTRICT
- CHICAGO PUBLIC SCHOOLS
- CHICAGO BLACK HAWKS FOUNDATION
- CHICAGO FIRE FOUNDATION
- CHICAGO BULLS FOUNDATION
- NHL HOCKEY IS FOR EVERYONE
- NHL PLAYERS ASSOCIATION
- USA HOCKEY FOUNDATION
- GOVERNMENT FUNDED PROGRAMS

GOLD

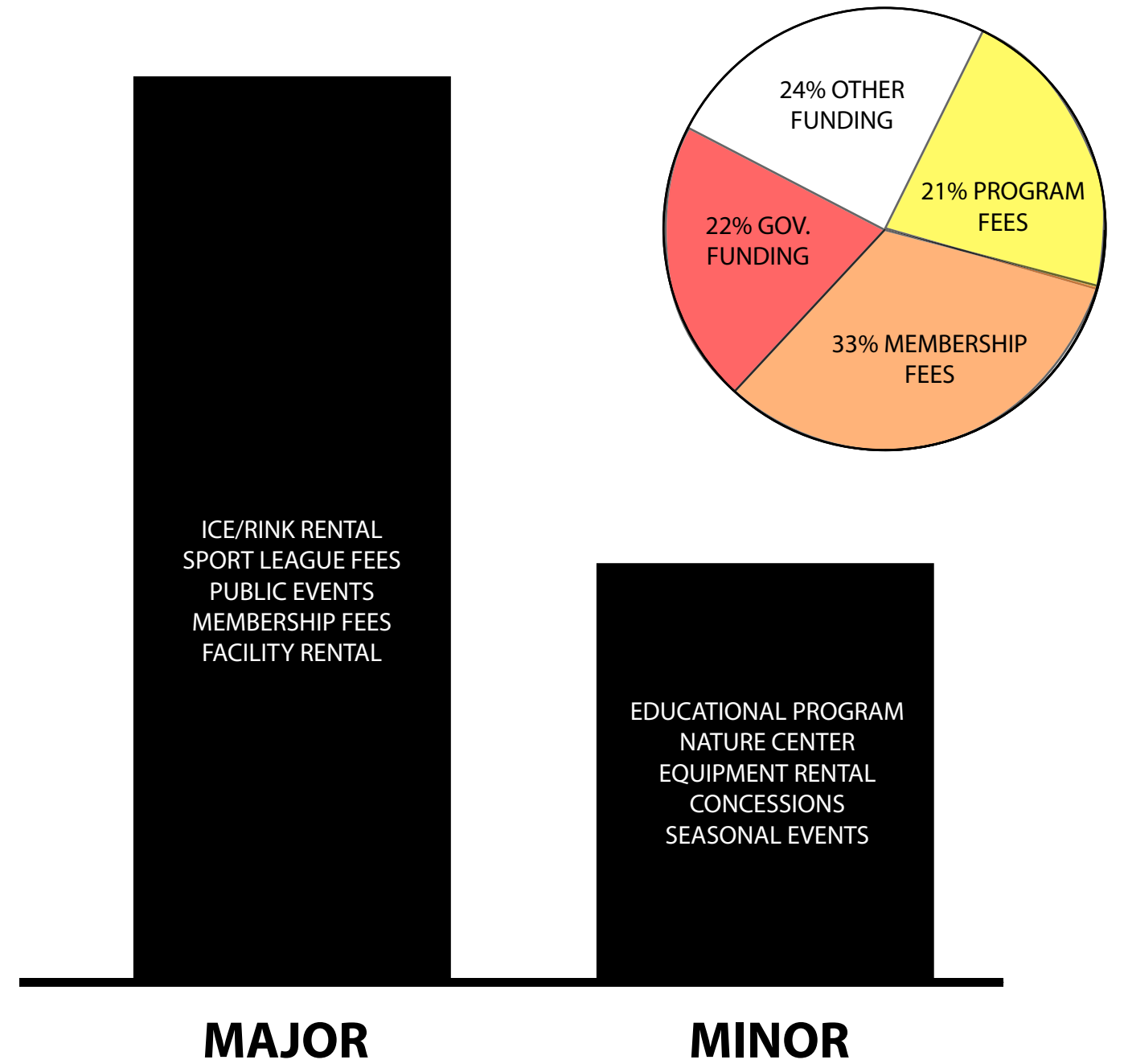
- MEDIUM TO LARGE BUSINESSES
- STATE FARM INSURANCE
 - WHITE CASTLE
 - EASTON
 - NIKE

SILVER

- SMALL BUSINESSES
- NAPLES BAKERY
 - BARACCOS PIZZA
 - A & J MEAT MARKET



REVENUE



WHILE THE LARGEST CONTRIBUTOR TO THE CENTER WILL BE THE CITY OF CHICAGO, THERE ARE MANY ORGANIZATIONS WHICH HAVE BEEN SET UP TO PROVIDE FUNDING TO FURTHER SUPPORT AND SUPPLEMENT THIS TYPE OF FACILITY. THERE ARE ALSO AMPLE LOCAL BUSINESSES WHOM ARE LOOKING FOR WAYS TO GIVE BACK TO THE COMMUNITY

MUCH OF THE YEARLY FUNDING WILL BE THROUGH THE CITY AND DONATIONS. THIS WILL BE FURTHER SUPPLEMENTED THROUGH THE PROGRAMS AT THE CENTER. THIS HAS PROVEN TO BE A SUBSTANTIAL SUM ON MONEY AS CAN BE SEEN IN THE YMCA'S ANNUAL REPORTS OF THEIR RECREATION FACILITIES

PROGRAM

NATURE CENTER

- CLASS ROOMS
- EXPERIMENT/ LAB AREA
- LIBRARY/ EDUCATIONAL RESOURCE
- RECEPTION
- BATHROOMS
- NATIVE ANIMAL TANK/ DISPLAY ROOM
- ADMINISTRATIVE OFFICES
- MEP ROOM

(10,000SF)

RECREATION

- INDOOR RINK
- OUTDOOR RINK W/ CANOPY
- MULTIUSE ROOMS
- LOCKERS
- STORAGE
- OBSERVATION/ STANDS
- ADMINISTRATIVE OFFICES
- MEP ROOM
- GYM

(25,000SF)

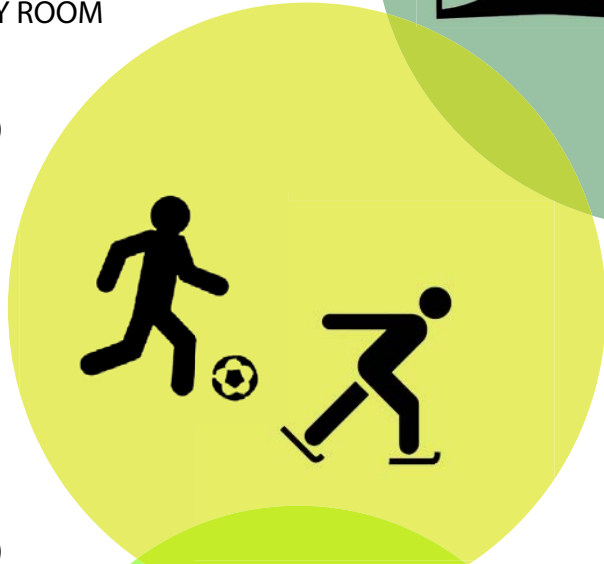
CIRCULATION

- MAIN CIRCULATION
- PLANTED PATHWAYS
- BANQUET/ RENTABLE AREA
- LOBBY
- MAIN DESK
- EQUIPMENT RENTAL
- BATHROOMS
- CONCESSIONS
- MEP ROOM

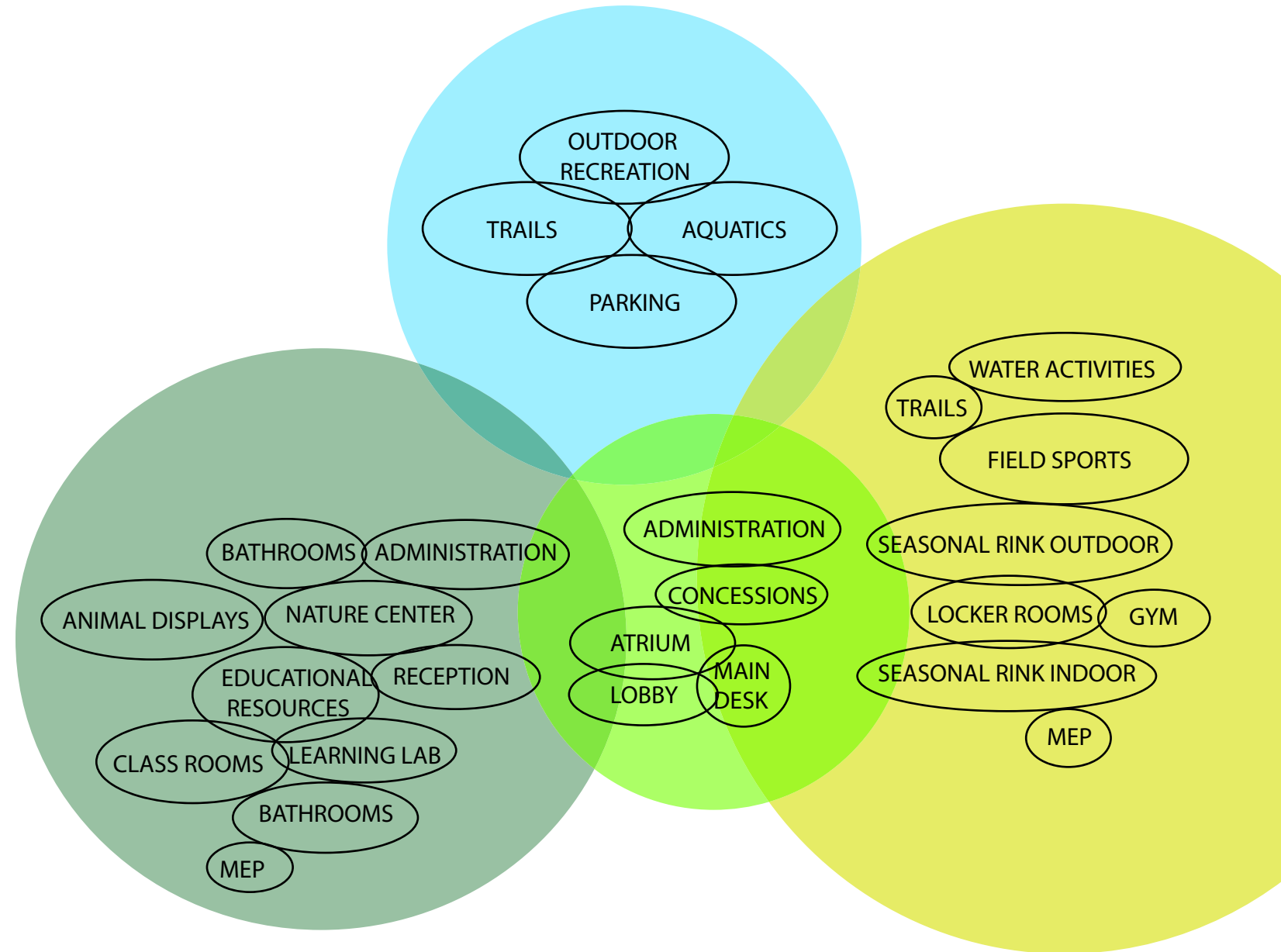
(15,000SF)

OUTDOOR

- NATURE TRAILS/ BIKE PATHS
- PARKING
- RECREATIONAL FIELD ACTIVITIES (FOOTBALL, SOCCER, LACROSS, ETC)
- POND ACTIVITIES (FISHING, SWIMMING, ICE SKATING)



ADJACENCY



THE FACILITY WILL TOTAL AROUND 50,000 SF WITH THE MAJORITY OF THE SPACE BEING WITHIN THE RINK AND CIRCULATION/ ATRIUM AREAS

THE CIRCULATION CORE CREATES THE LINK BETWEEN ALL PROGRAMS AND ENCOURAGES THE CREATION OF AN INTERIOR ATRIUM/ WINTER GARDEN SPACE TO FACILITATE THE CENTER AS A POINT OF ENTRY AND DESTINATION

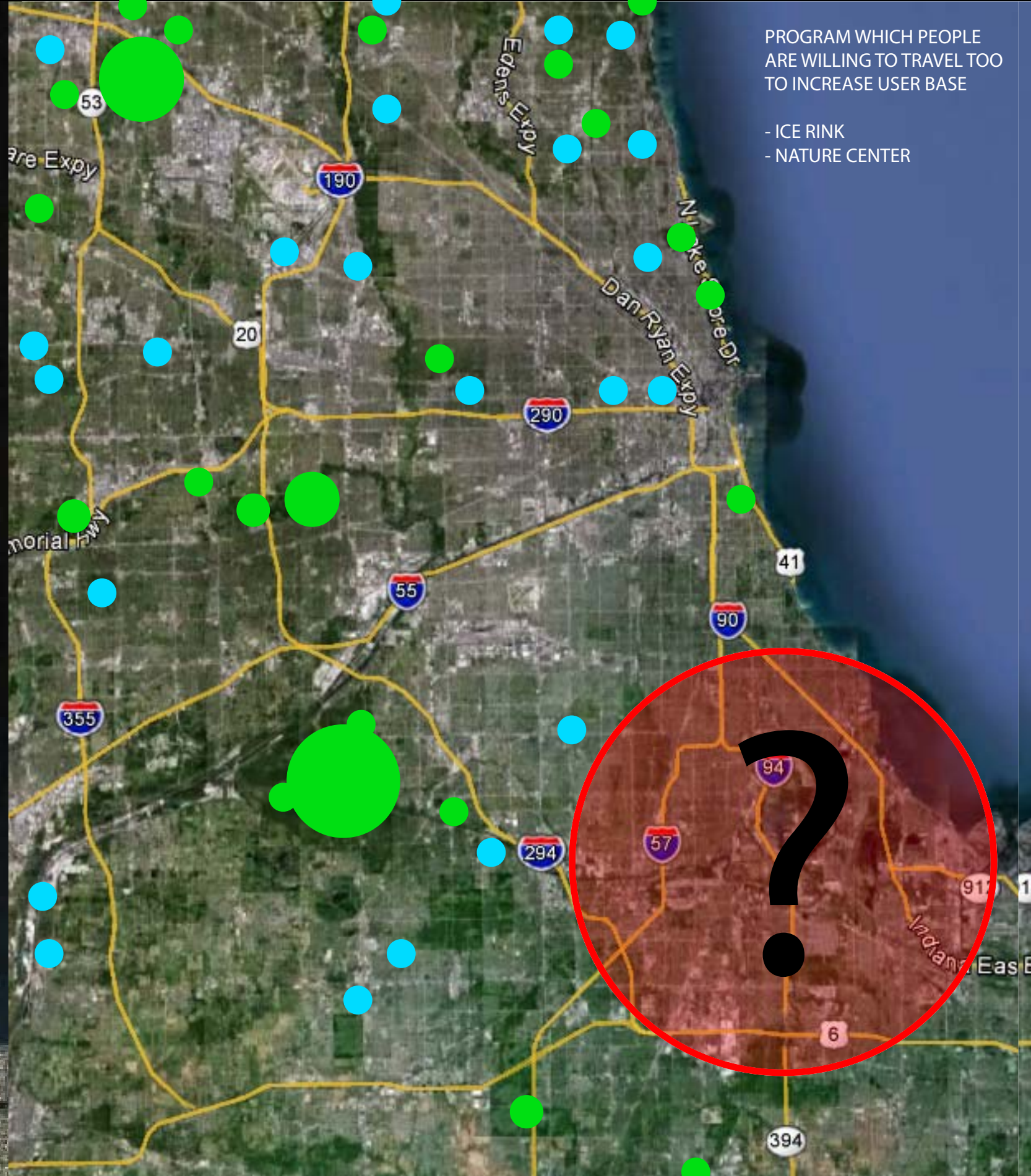
SITE

DESTINATION PROGRAM



SITE REQUIREMENTS

- ADJACENT TO PARK AND FOREST SPACE
- ACCESS TO WATER
- CAR/ HIGHWAY ACCESS
- 1/4 MILE WALK TO PUBLIC TRANSPORTATION
- IN A COMMUNITY LACKING ACCESS TO NATURE AND RECREATION
- UNOCCUPIED LAND
- LARGE USER BASE OF ALL AGES
- NEAR SCHOOLS

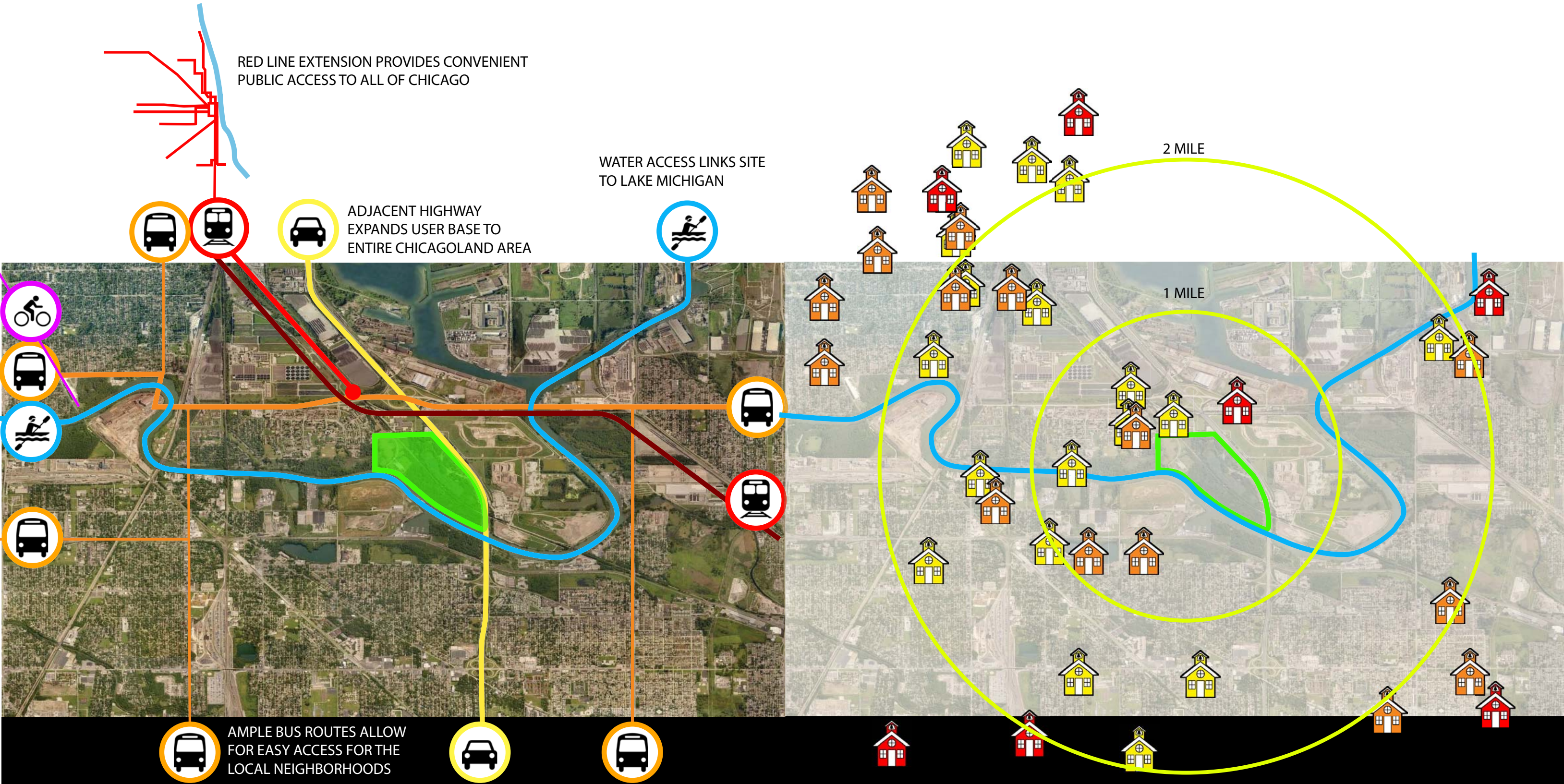


PROGRAM WHICH PEOPLE ARE WILLING TO TRAVEL TOO TO INCREASE USER BASE

- ICE RINK
- NATURE CENTER

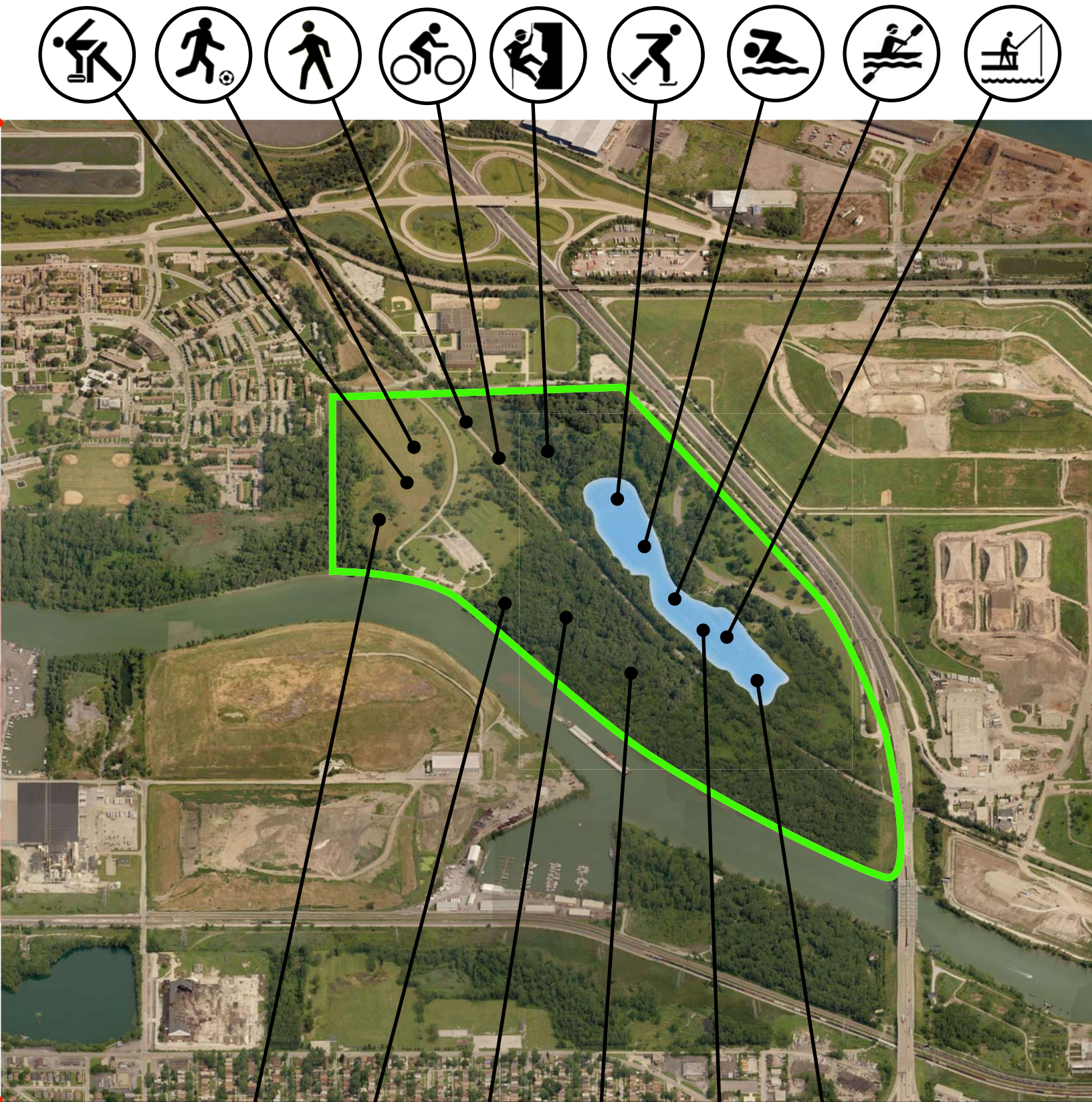
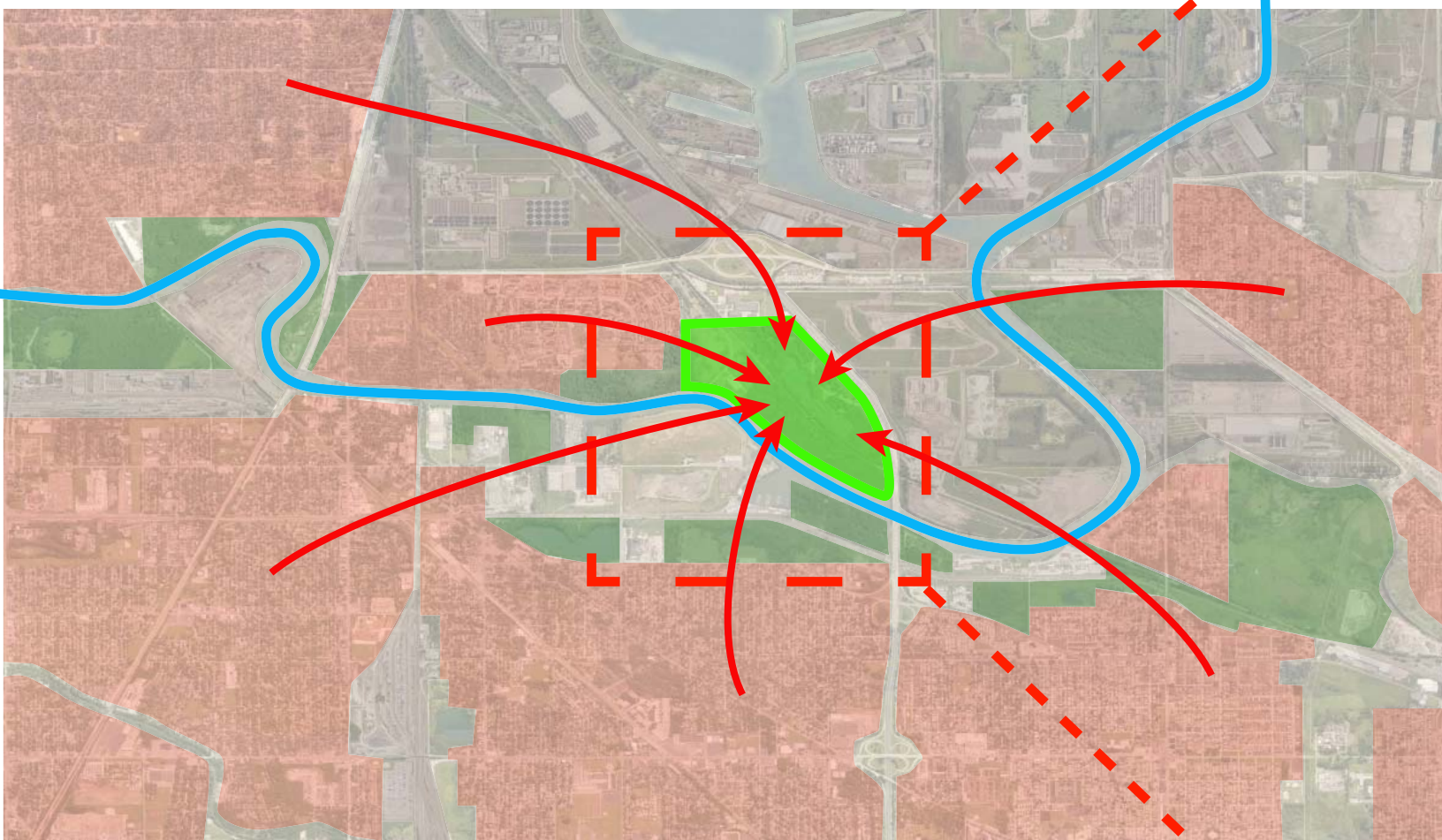
SITE CIRCULATION

USERS



CONTEXT

SITE OPPORTUNITIES

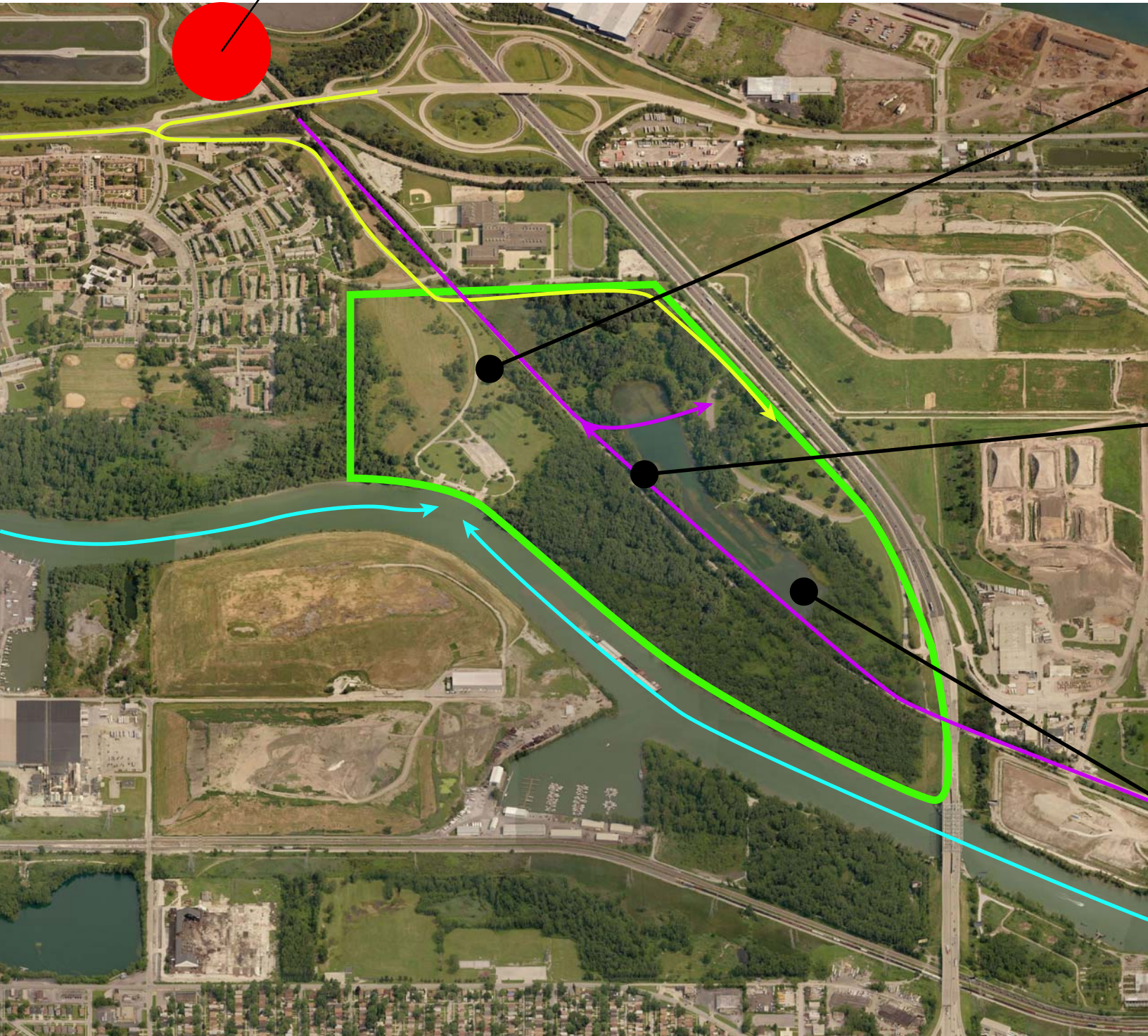


-  RESIDENTIAL
-  PARK
-  INDUSTRIAL

THE CENTERS LOCATION IS POISED TO CONNECT THE DISJOINTED COMMUNITIES OF THE CALUMET AREA AND BEGIN THE CONVERSATION OF RESTORING THE NATURAL HABITAT ON VACANT INDUSTRIAL SITES THROUGHOUT THE AREA

SITE ACCESS

FUTURE RED LINE STATION

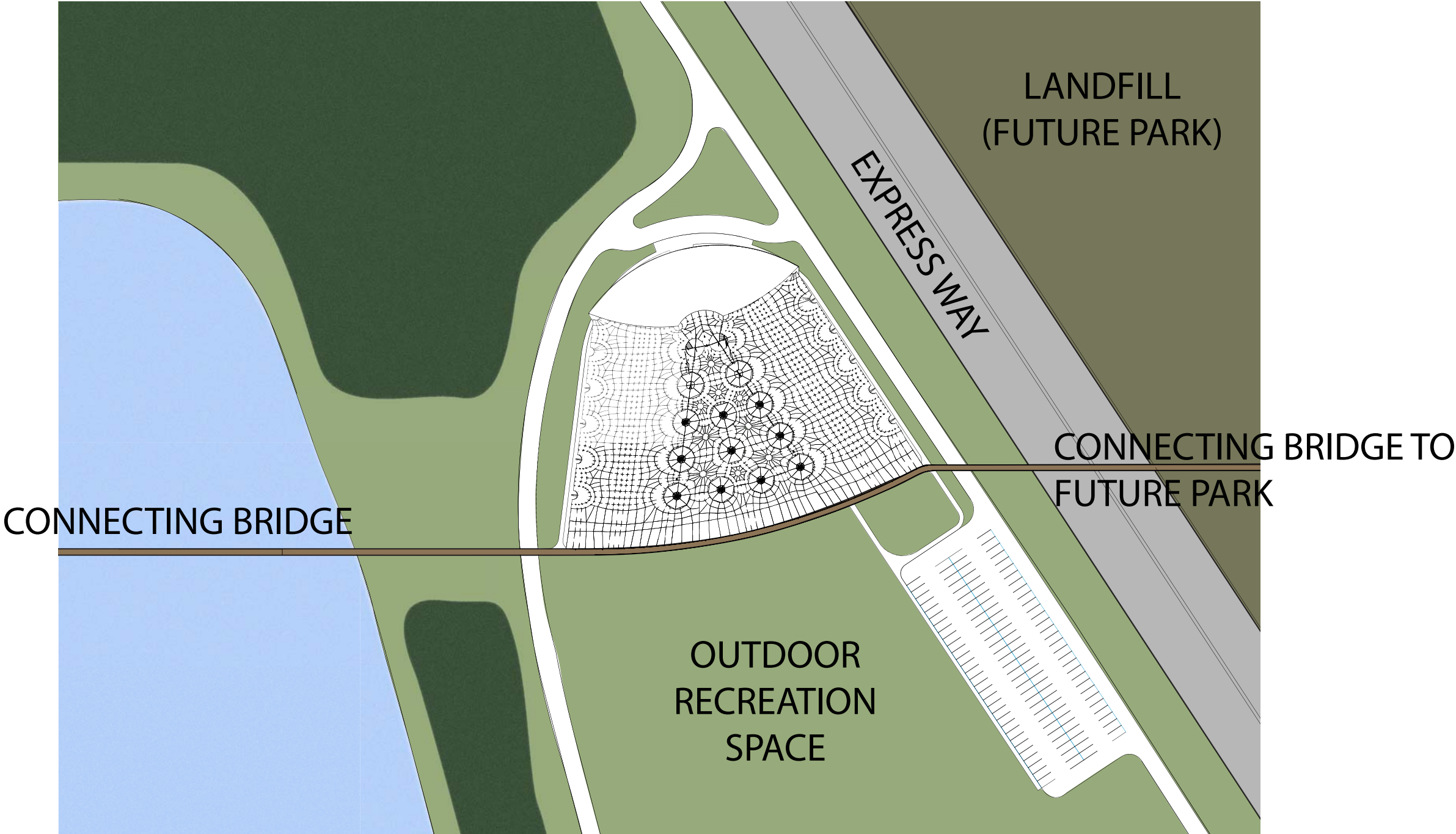


ABANDONED RAIL TRACKS RECLAIMED FOR NATURE TRAIL

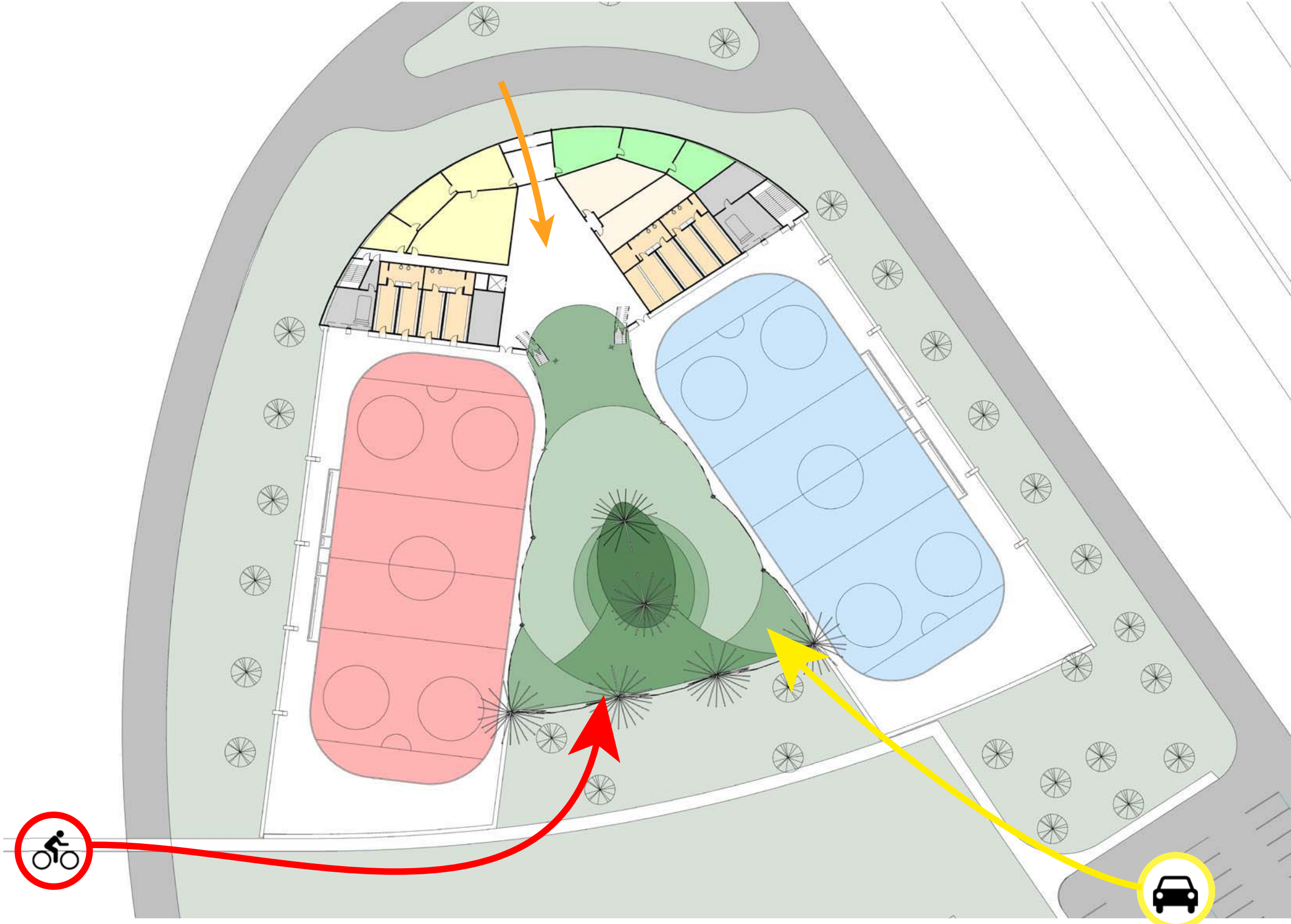
VEHICLE ENTRY PROVIDES NATURAL EXPERIENCE



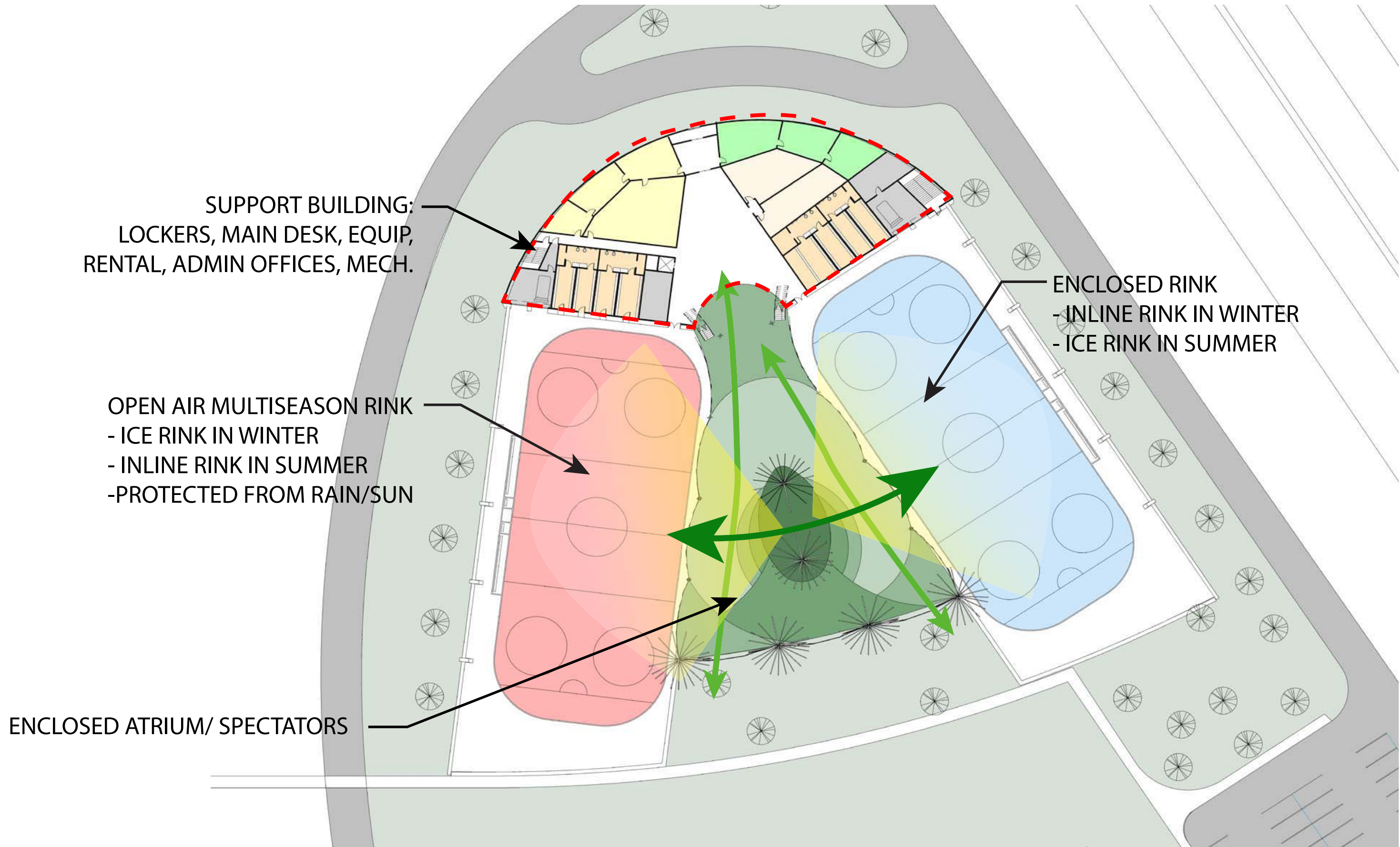
SITE CIRCULATION



FLOOR PLAN

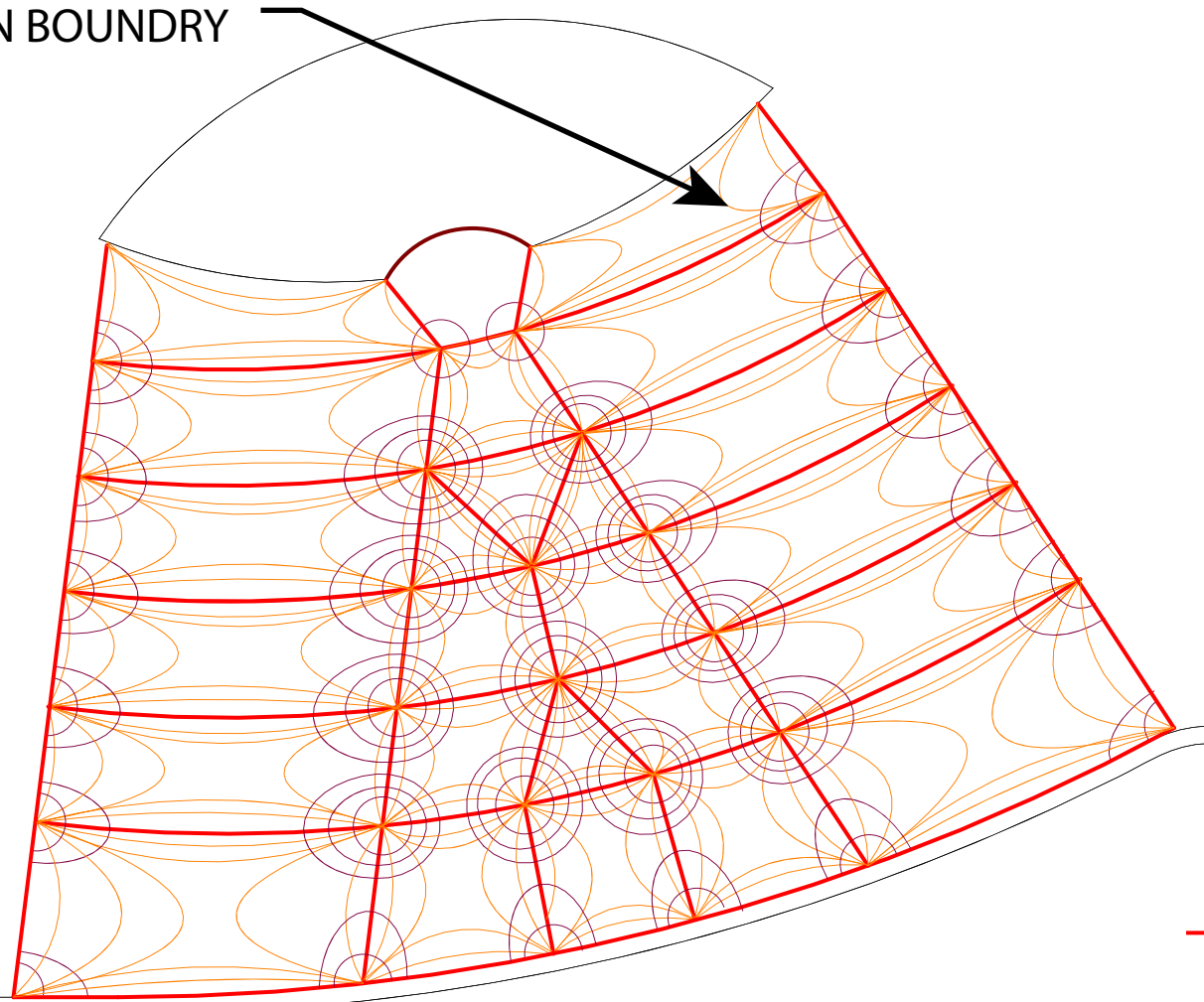


VIEWS



STRESS GRADIENTS

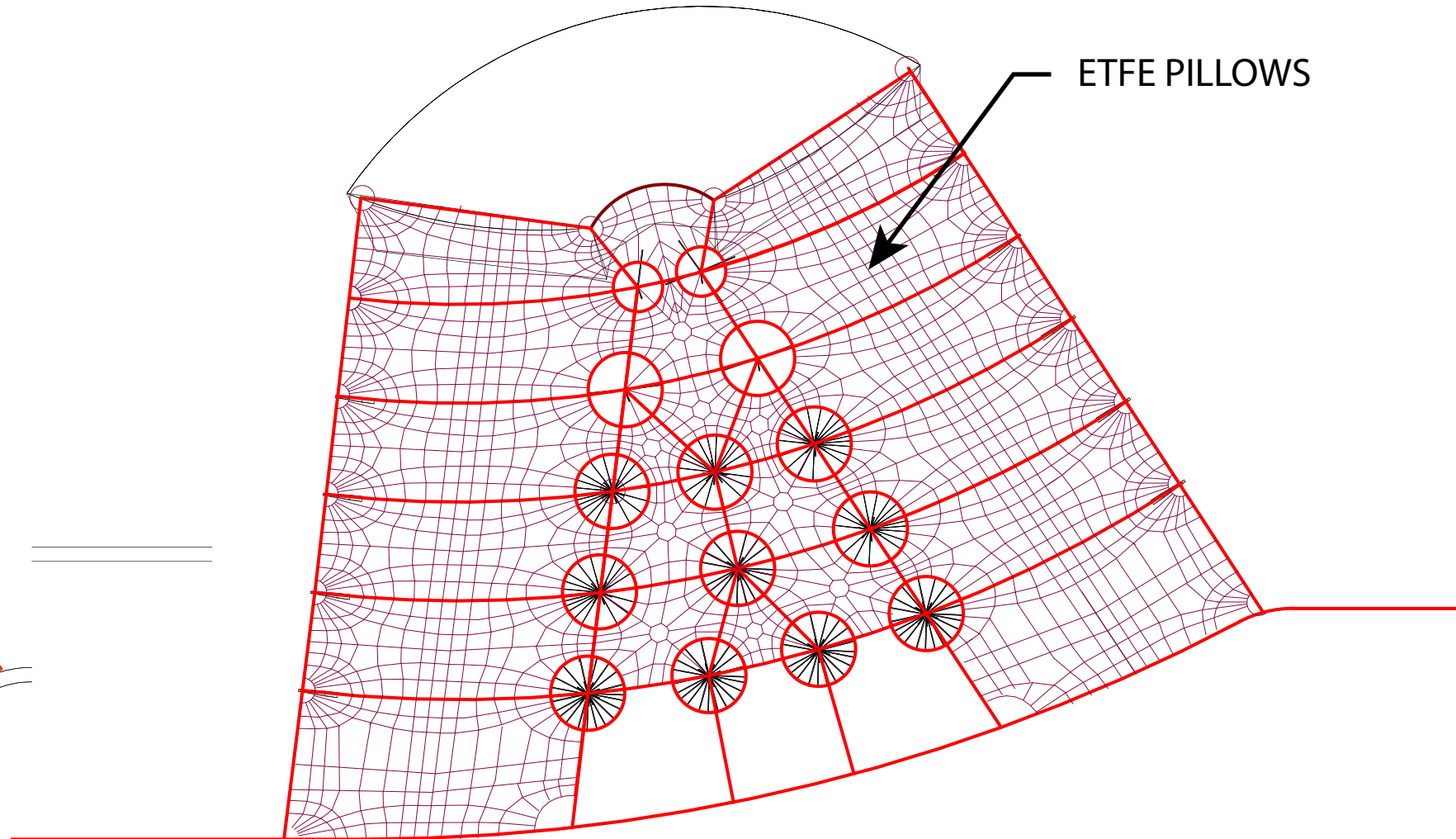
TENSION WITHIN THE
COMPRESSION BOUNDRY



STRESS GRADIENT - NATURAL FORM

MAPPING OUT THE MAJOR
AND MINOR STRESS
GRADIENTS ALLOW FOR THE
RATIONALIZATION OF PURE
TENSILE FORM. AN IDEAL
SYSTEM FOR LIGHT WEIGHT
LONG SPANNING STRUCTURES

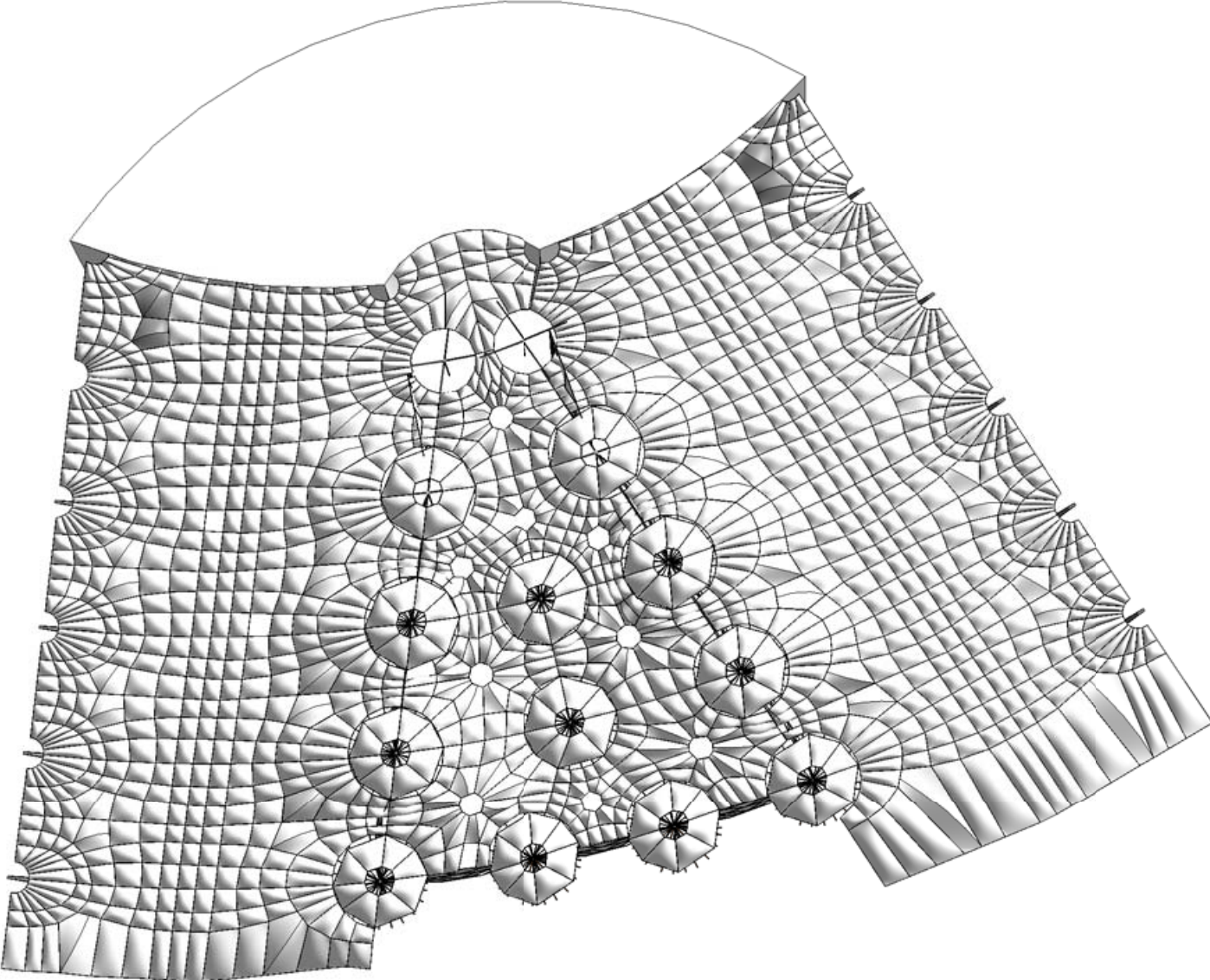
ETFE PILLOWS



STRESS GRADIENT - PANELIZED FORM

UTILIZING THE STRESS
GRADIENTS, THE ETFE PANELS
WERE DESIGNED TO FLOAT ON
TOP OF THE NATURAL FORM
OF THE CABLES

STRESS GRADIENT - ETFE PILLOWS

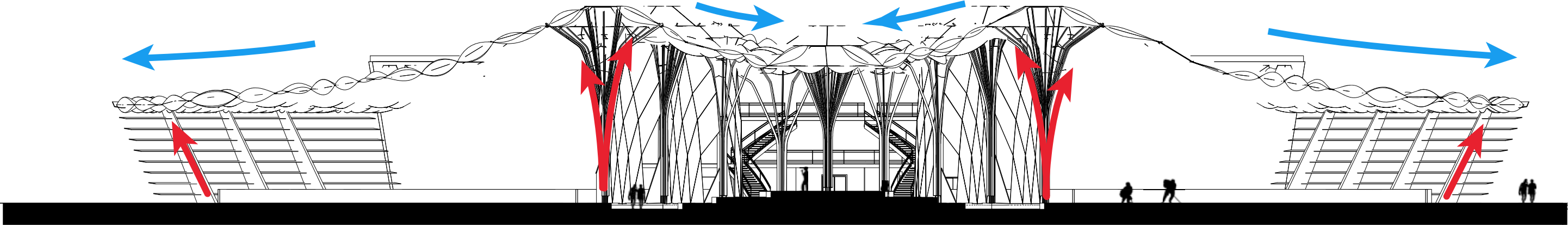


MULTISEASON RINK
TRANSLUCENT ETFE

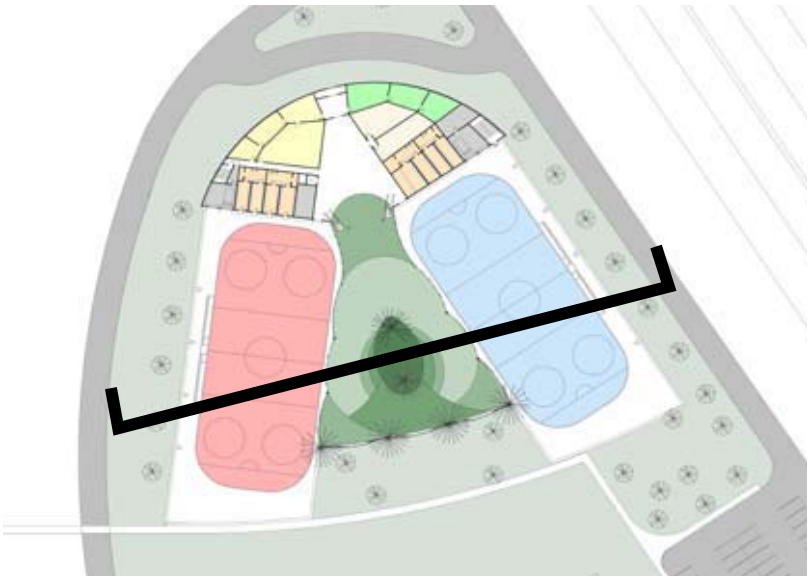


ATRIUM
TRANSPARENT ETFE

SECTION



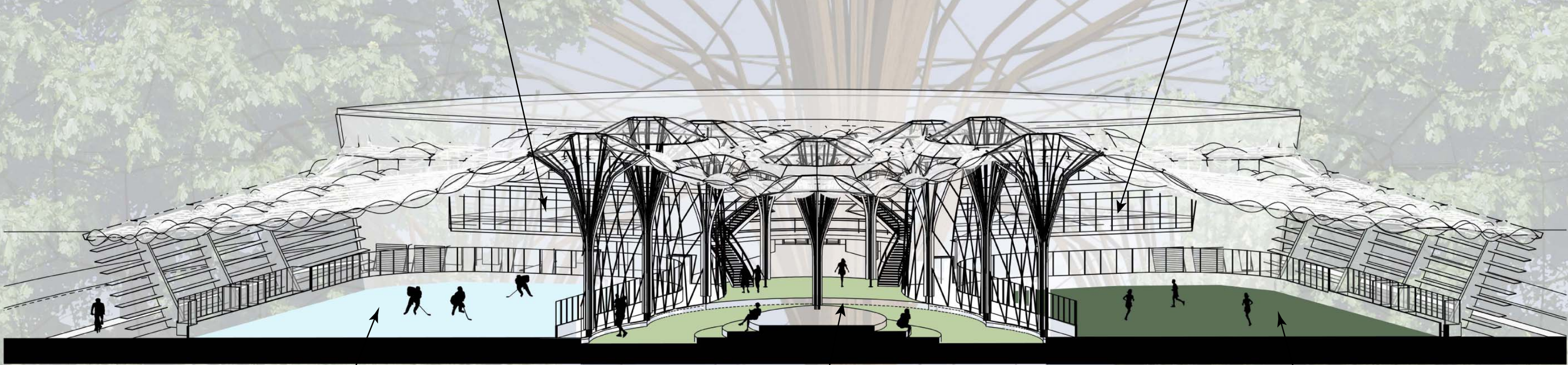
THE TENSION CANOPY SYSTEM ALLOWS FOR THE LIGHT-WEIGHT ETFE PANELS TO FLOAT AND CREATE THE FOREST CANOPY FEEL FOR THE ATRIUM SPACE.



AXON SECTION

INTERIOR OBSERVATION/ MULTIUSE

INTERIOR OBSERVATION/ MULTIUSE



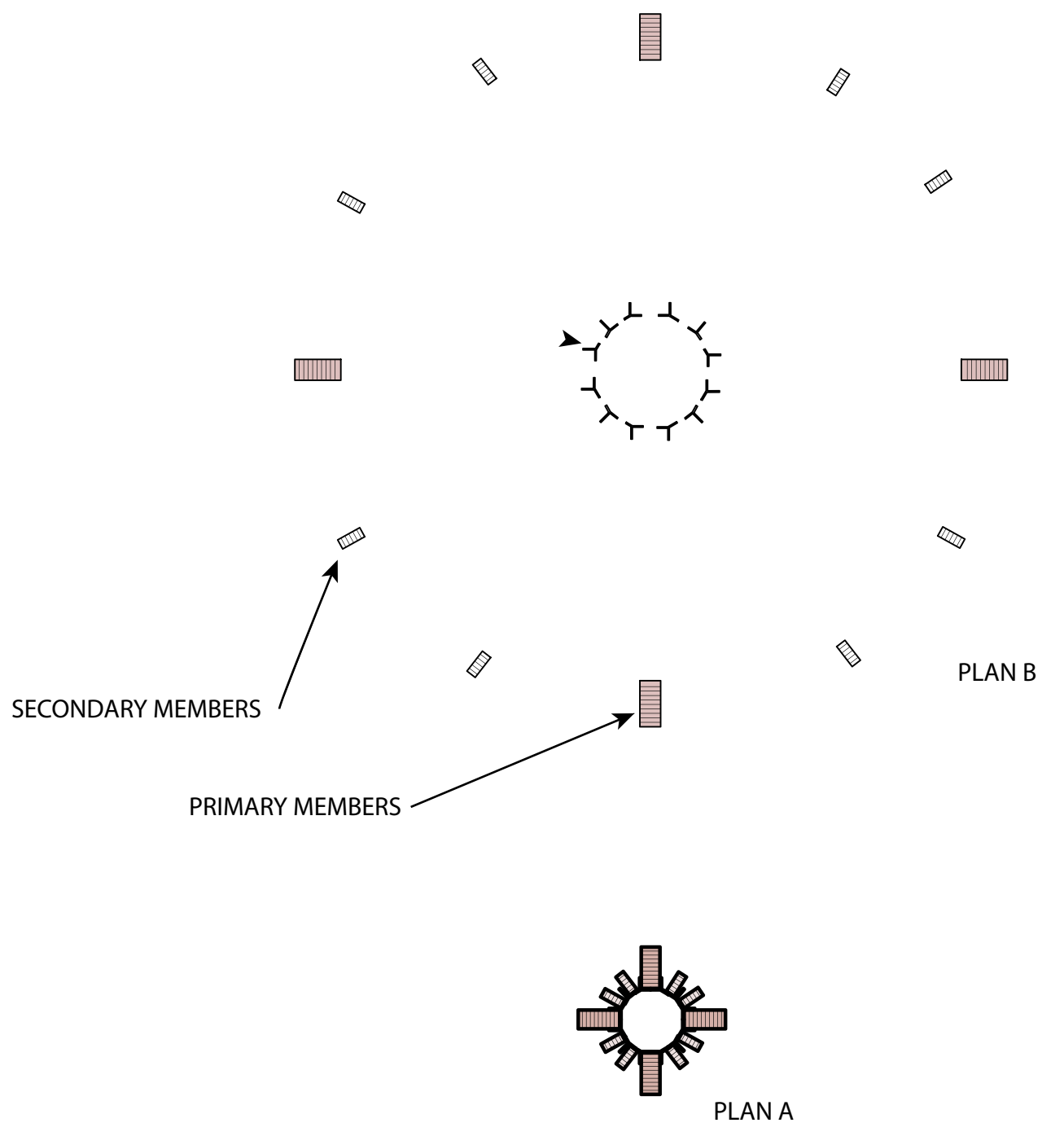
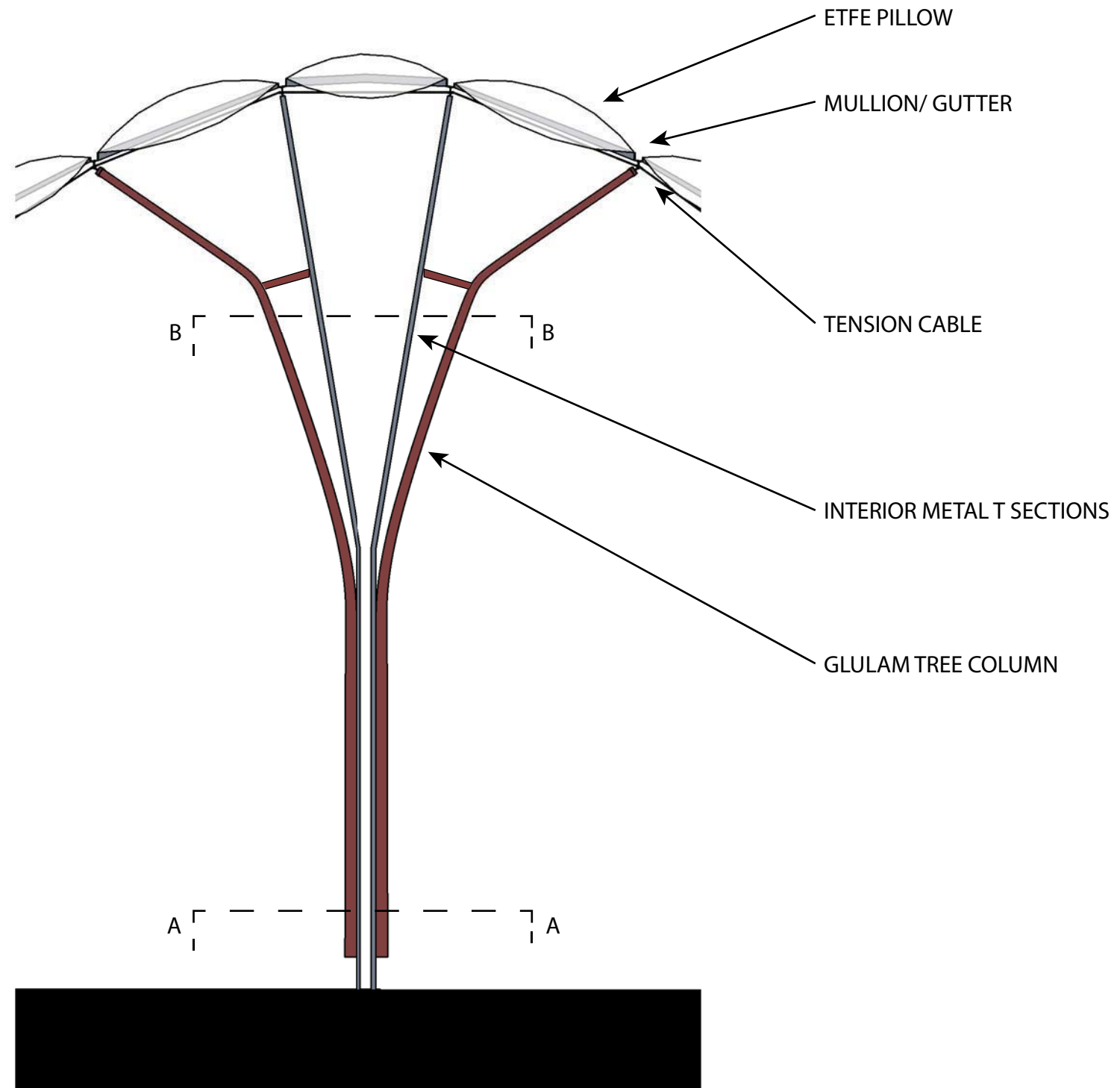
SECTION

MULTISEASON RINK

ATRIUM

ENCLOSED RINK

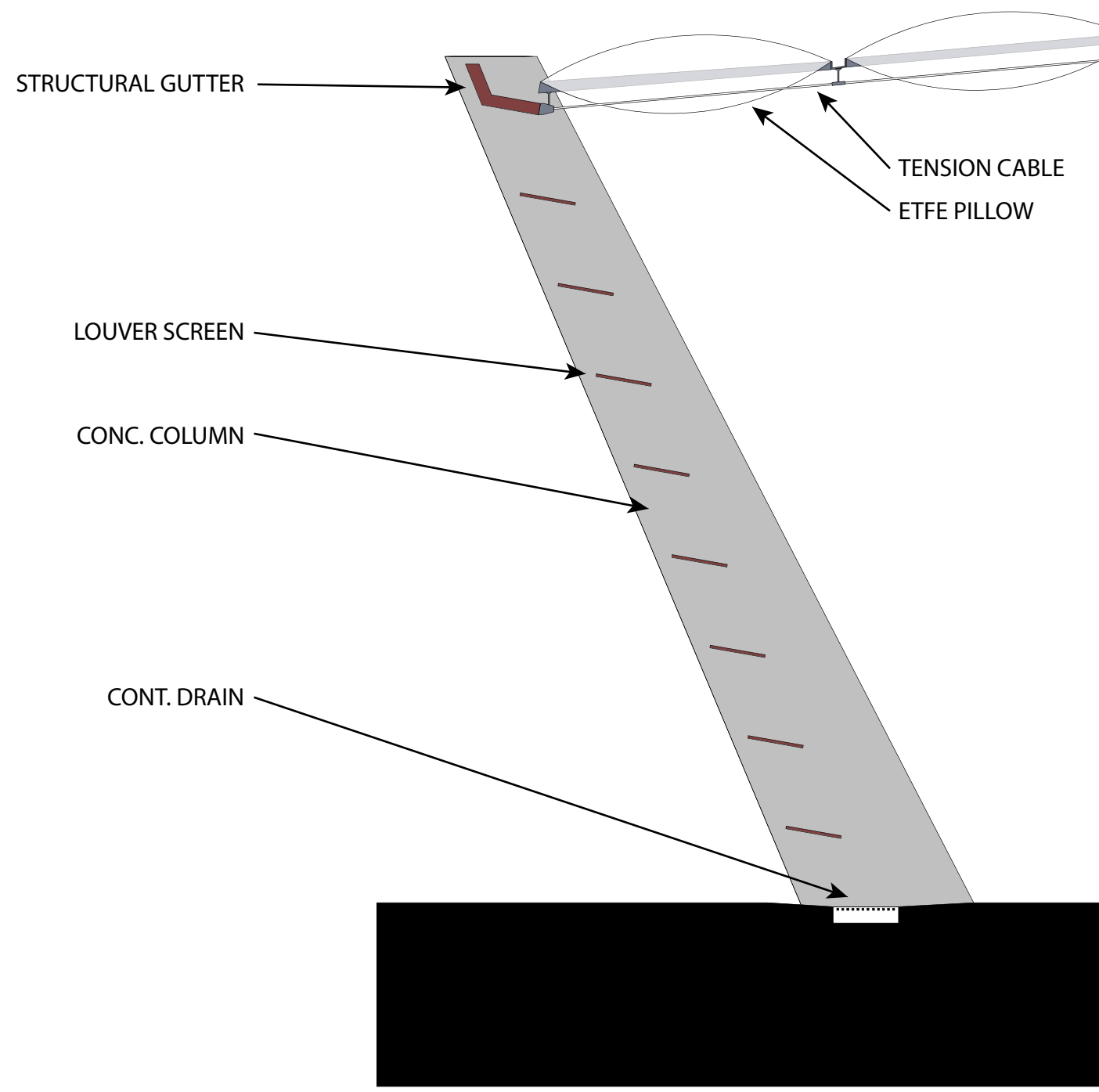
COLUMN DETAIL



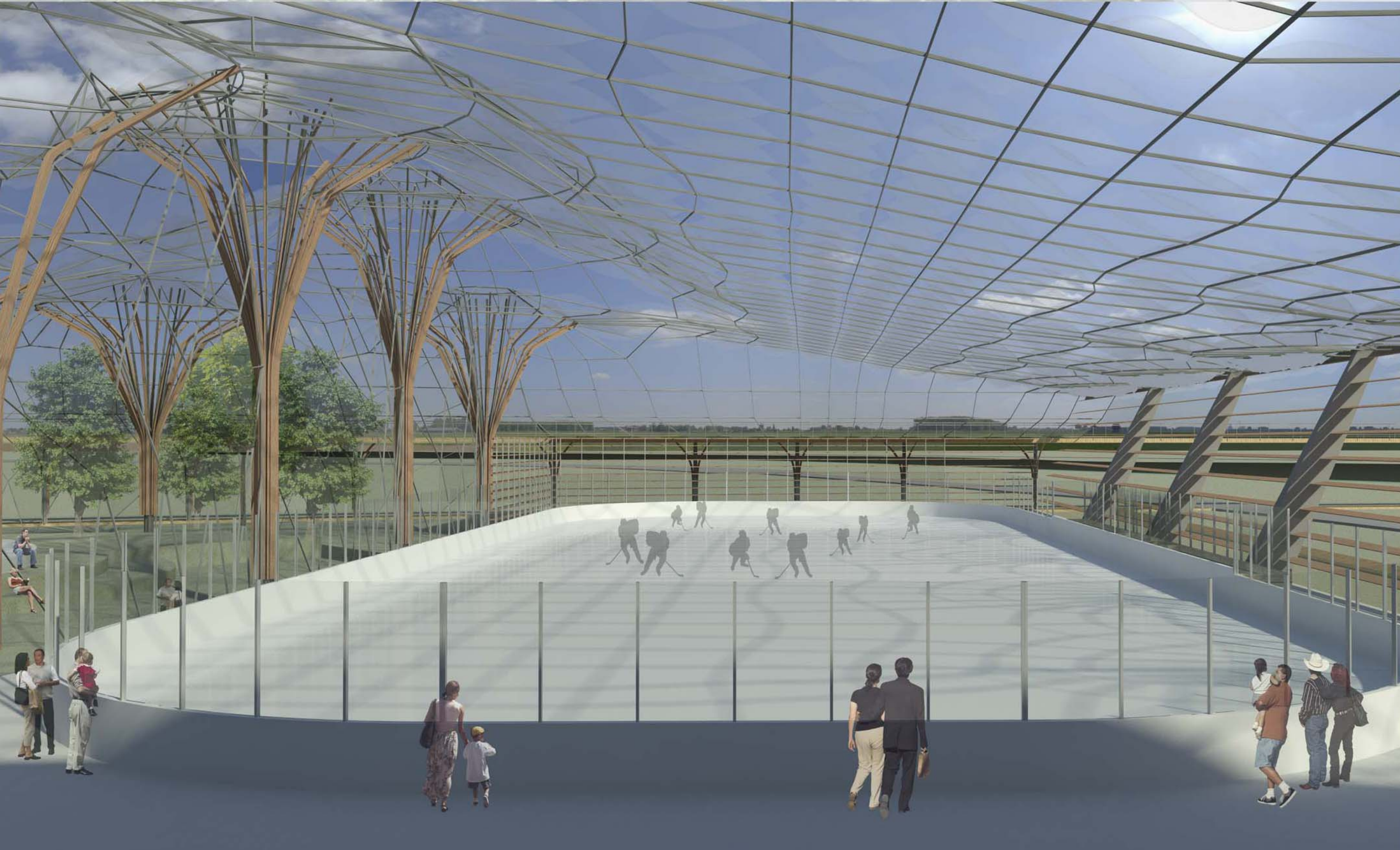
ATRIUM SPORTS SPECTATOR HILL



END COLUMN DETAIL



MULTISEASON RINK VIEW



ATRIUM VIEW



MAIN ENTRY



SOUTH ELEVATION