



# MONUMENTAL ADAPTATION: REIMAGINING THE OLD CHICAGO POST OFFICE

HISTORY



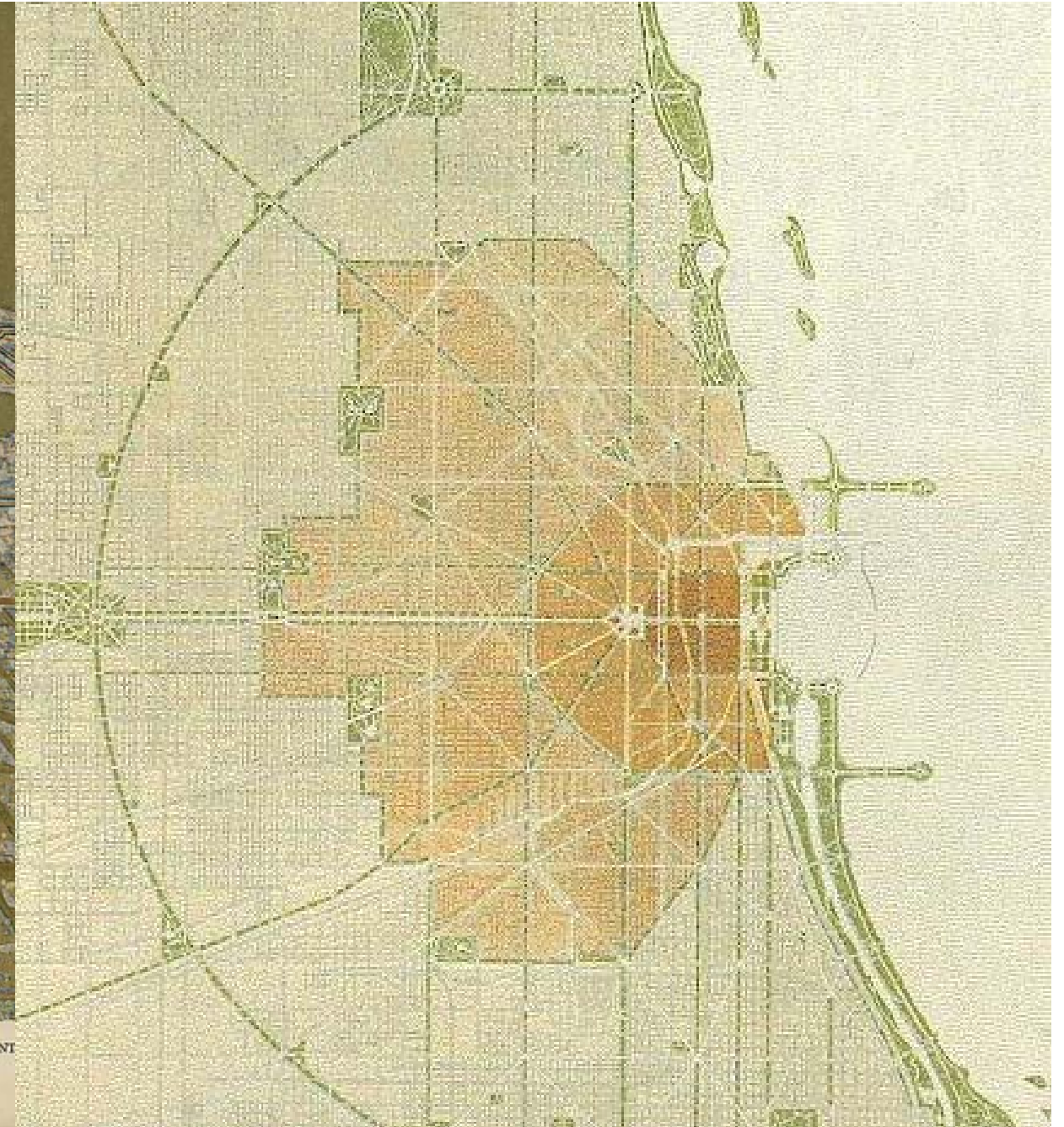


PLATE CXXXVII. CHICAGO. VIEW OF THE PROPOSED DEVELOPMENT IN THE CENTER OF THE CITY, FROM TWENTY-SECOND STREET TO CHICAGO AVENUE, LOOKING TOWARDS THE EAST OVER THE CIVIC CENTER TO GRANT AND LAKE MICHIGAN.  
Painted for the Commercial Club by Jules Guerin.

The post office site lies along the central axis of congress parkway proposed by Daniel Burnham in The Plan of Chicago.





Imagery Date: 6/30/2010 1999

3350 ft

Image © 2012 TerraMetrics

41°52'43.65" N 87°38'21.33" W elev 586 ft

Eye alt 15070 ft



# 236

UNITED STATES POST OFFICE, CHICAGO

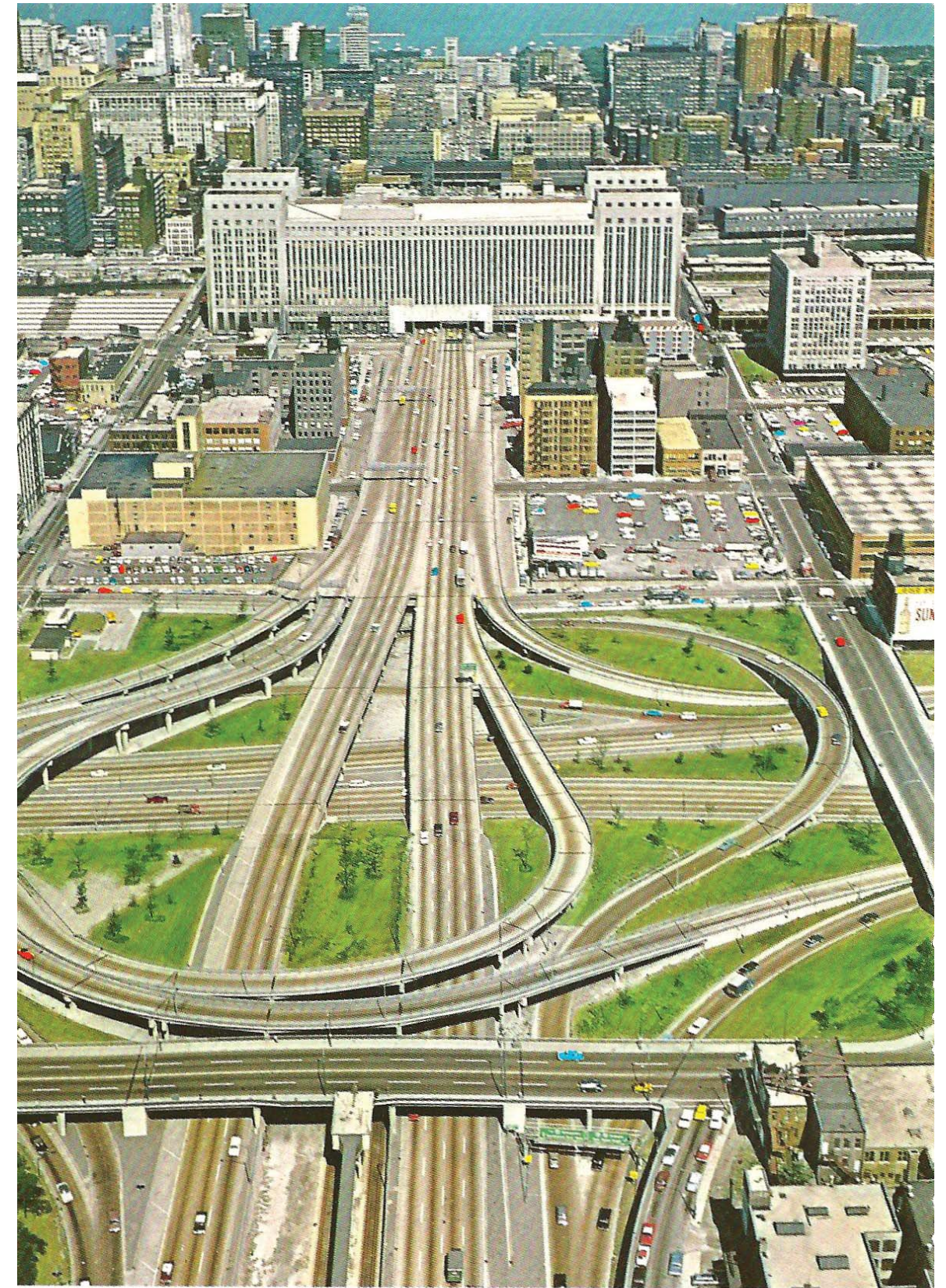


© MAX RIGOT

© CHICAGO AERIAL SURVEY CO.

The Old Chicago Main Post Office was constructed in 1932, before the Eisenhower Expressway. The building was designed to accommodate the planned extension of Congress Parkway and in 1953 it cut through the building.

PRE-Eisenhower Expressway



*Eisenhower Expressway*

*Photo by Penrod*

POST-1953











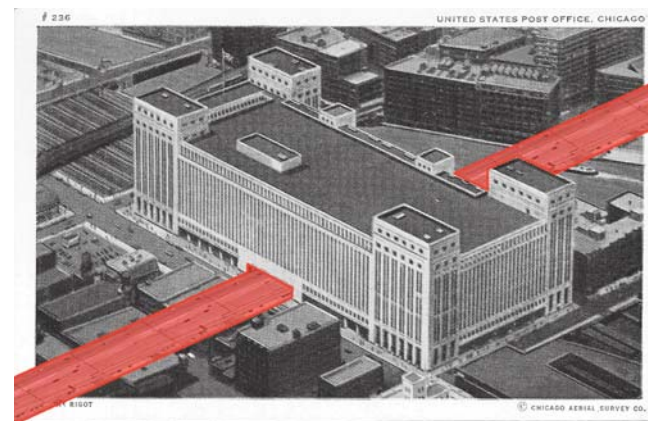


The post office was abandoned by the postal service in 1997 and remains unused to this day.





1932



1953



1997



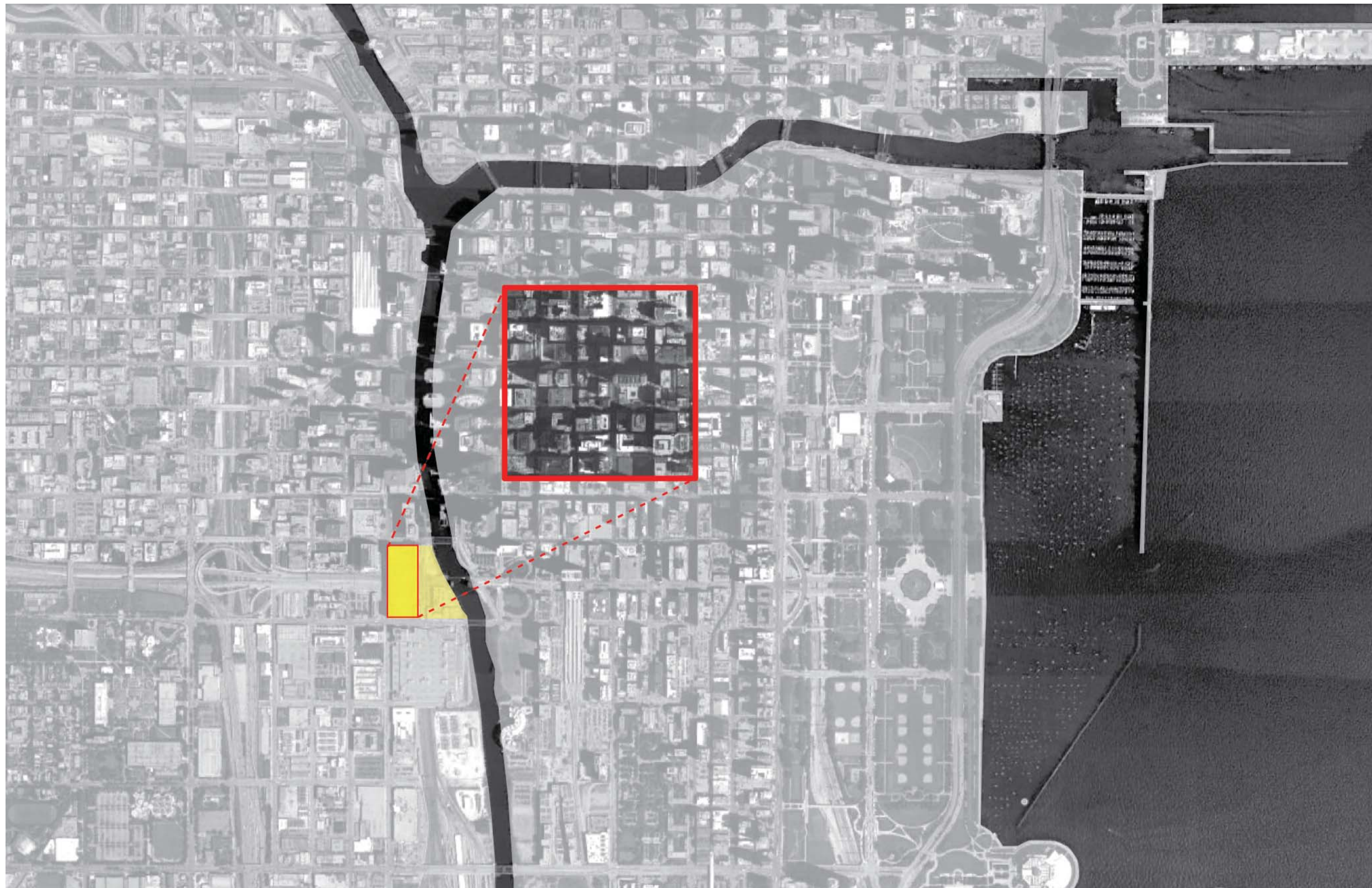


SCALE



The Old Post Office has a floor area of 3,000,000 square feet

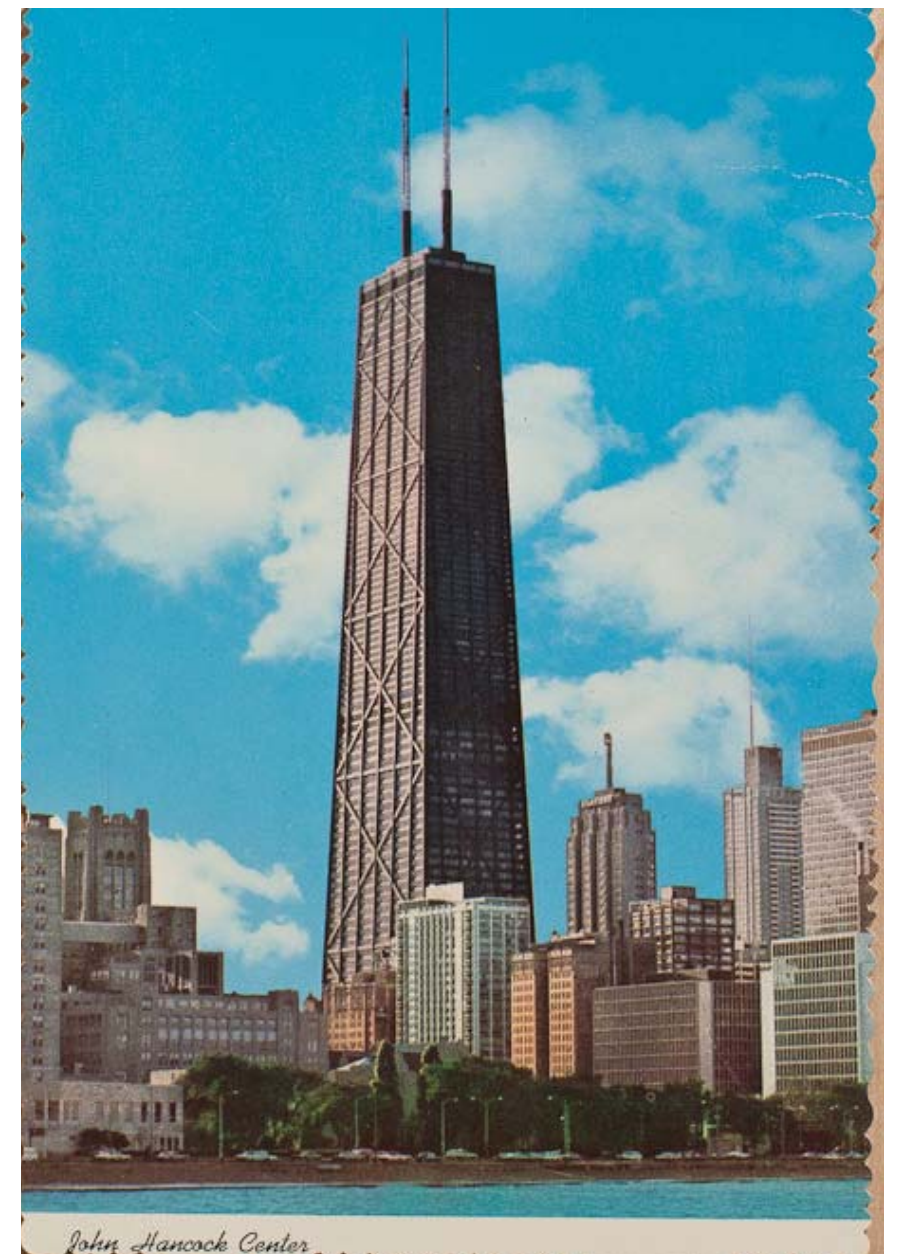








=



The area of the post office is equal to the area of the John Hancock Center.





=

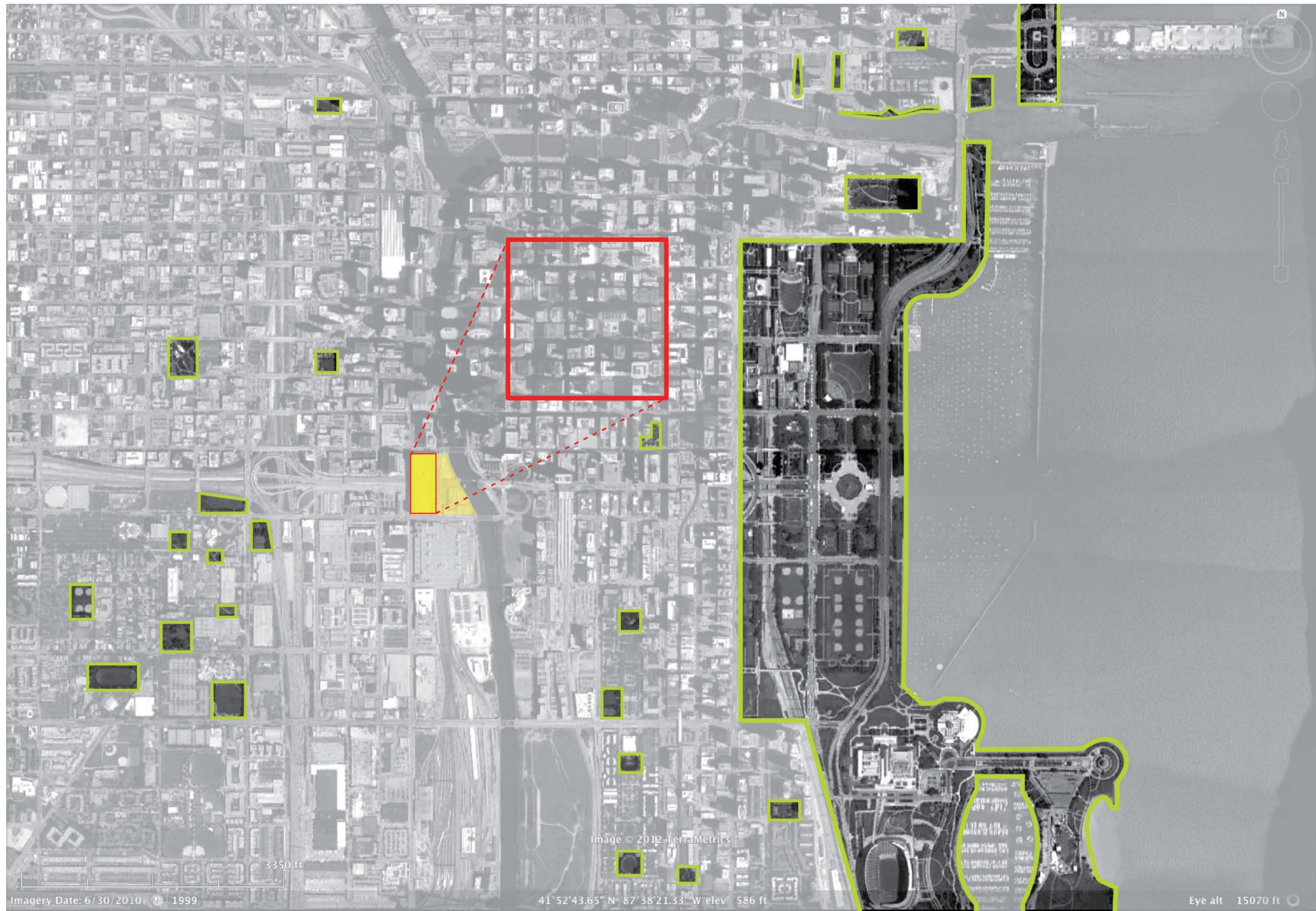


x 100



In the Post Office, you could live in a new  
8'x 10' room every day for 100 years.





Imagery Date: 6/30/2010 1999

Image © 2012 TerraMetrics  
41°52'43.65" N 87°38'21.33" W elev 586 ft

Eye alt 15070 ft

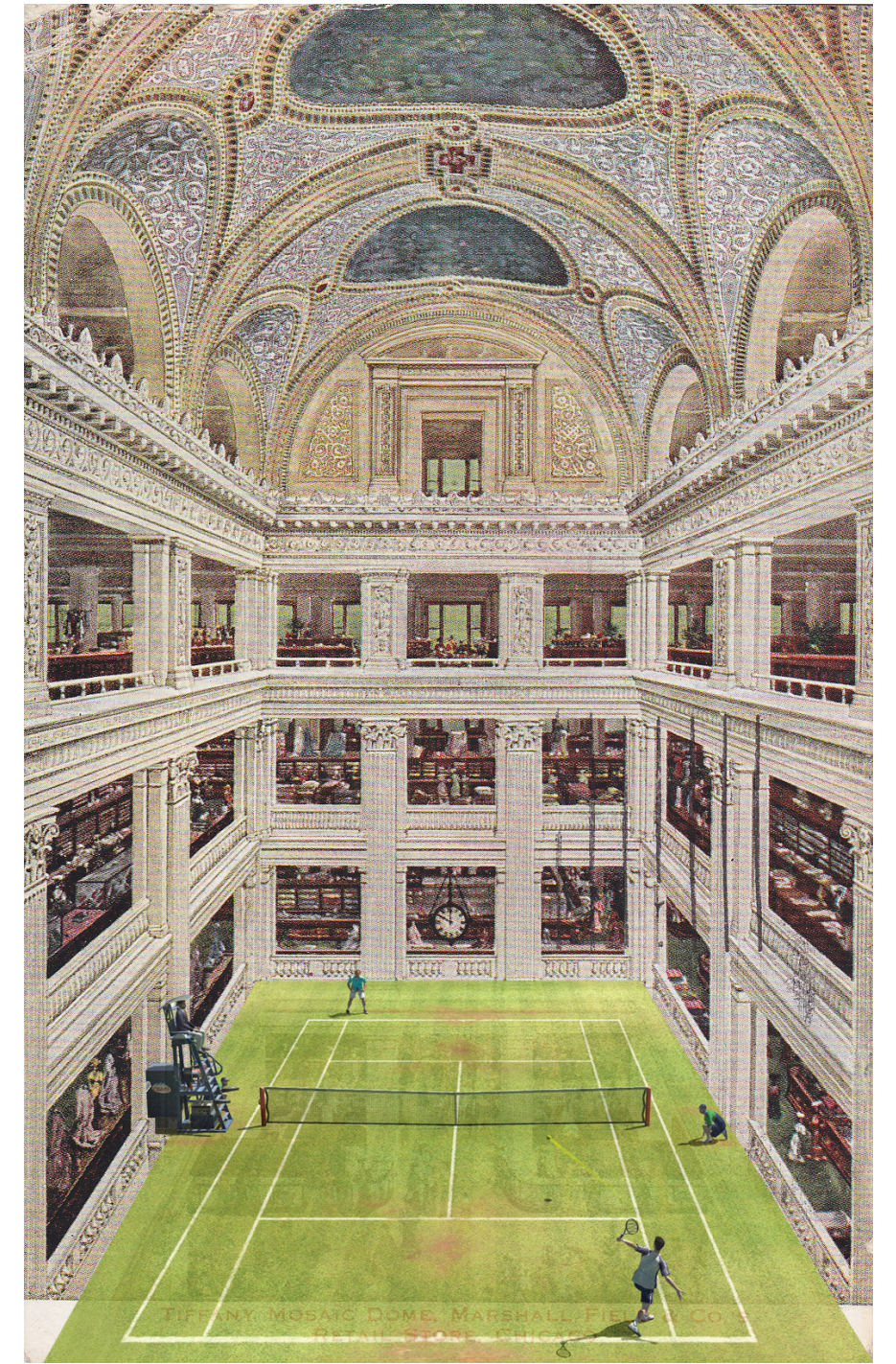
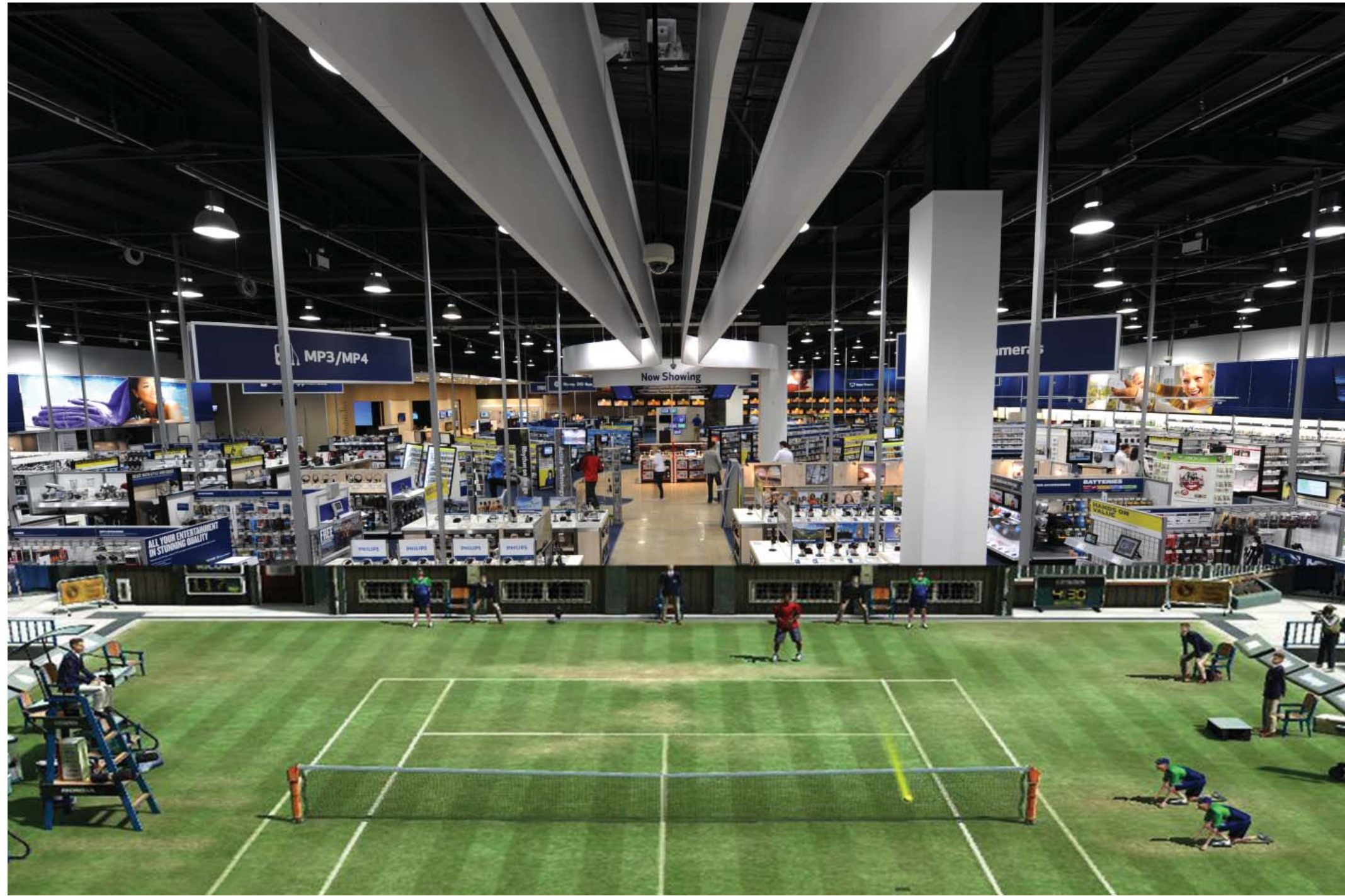


RECREATION & RETAIL









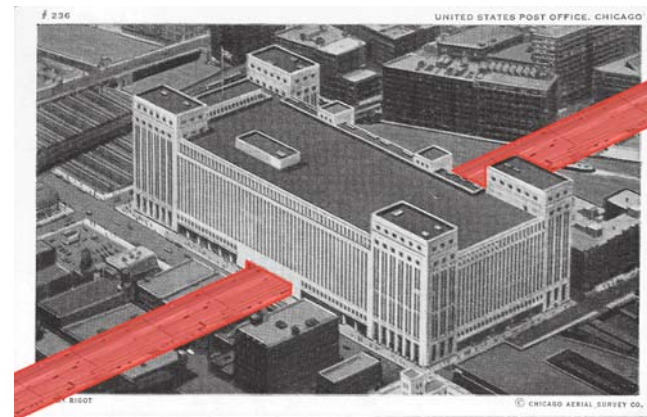








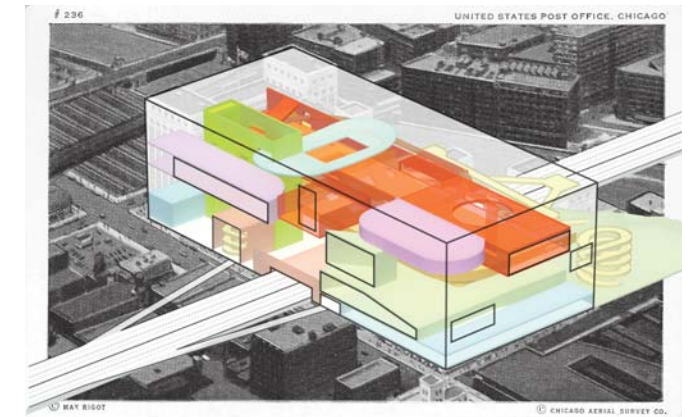
1932



1953



1997

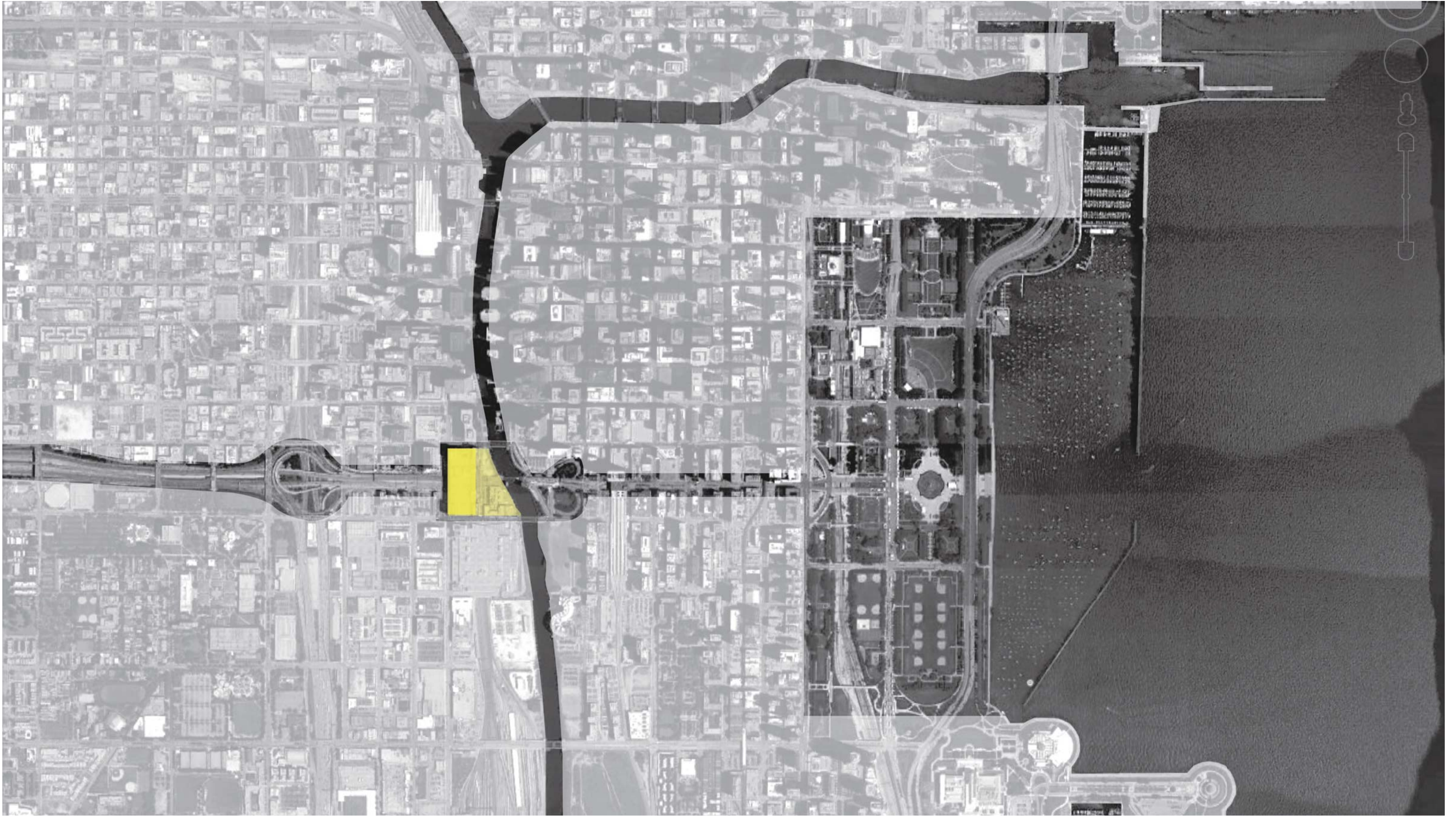


2015

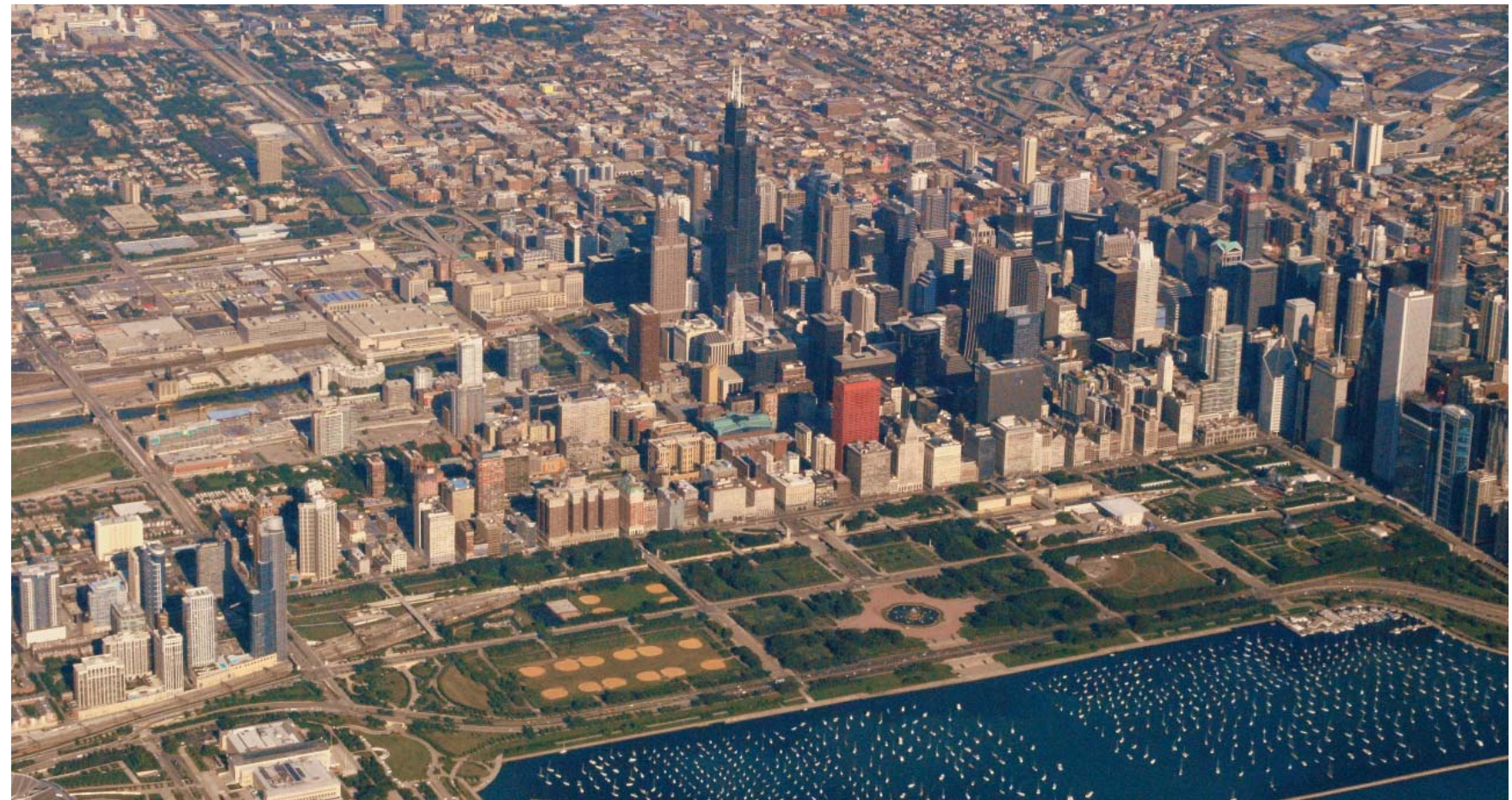
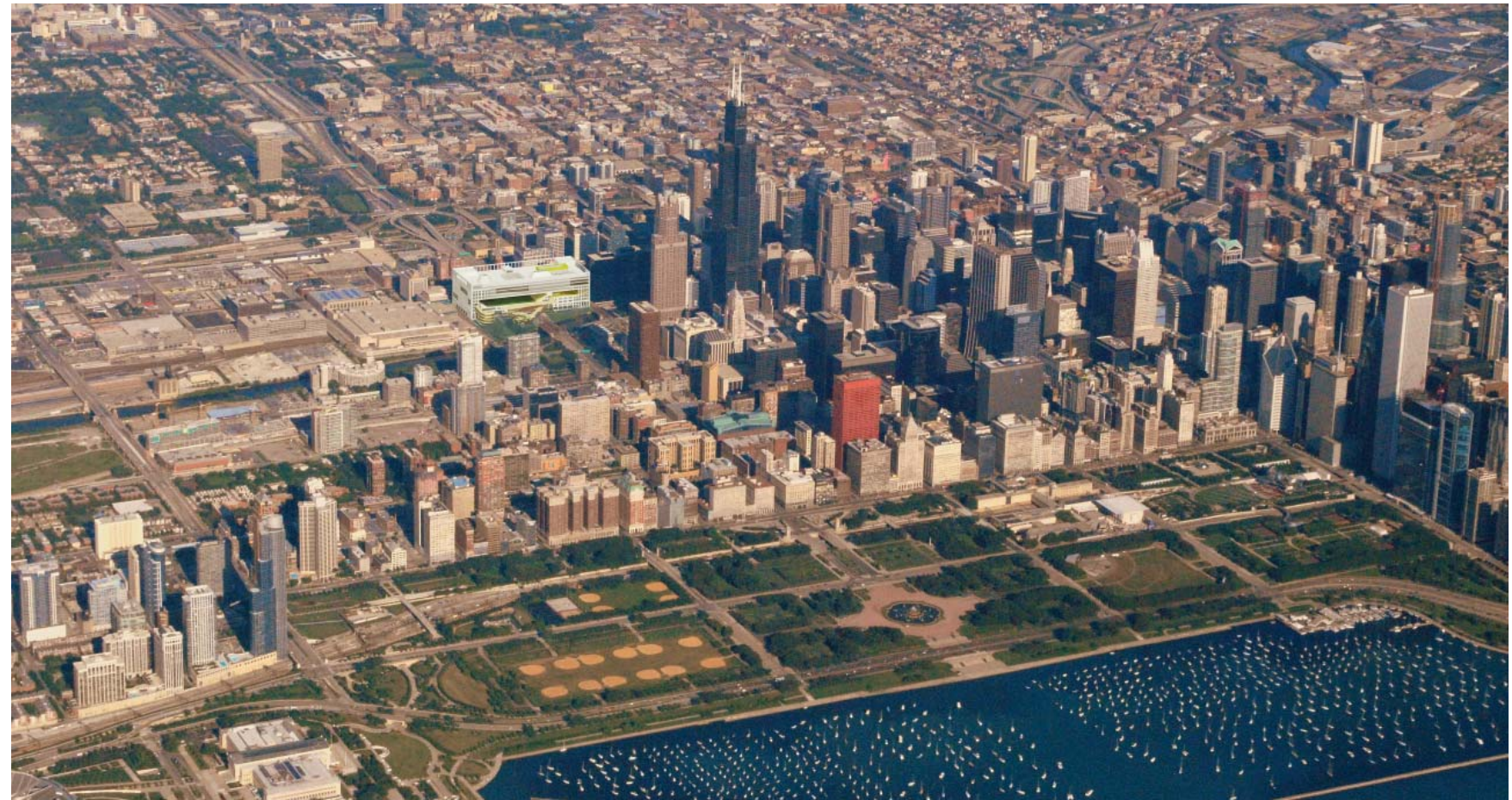
#### MONUMENTAL ADAPTATION: REIMAGINING THE OLD CHICAGO POST OFFICE

Built in 1932, the Old Chicago Main Post Office was the largest post office in the world at three million square feet. It was designed to accommodate the extension of Congress Parkway and in 1953 the Eisenhower Expressway cut a void through the center of the building. Finally the Post Office was vacated in 1997 and remains unused to this day. This project proposes the adaptation of the Post Office into a hybrid fieldhouse that contains public recreation and retail space. This proposal keeps the Post Office public, utilizing income generated through retail to maintain the building for Chicagoans. Recreation program is inserted into voids carved out of the original building. Retail occupies the peripheral space, surrounding the voids.





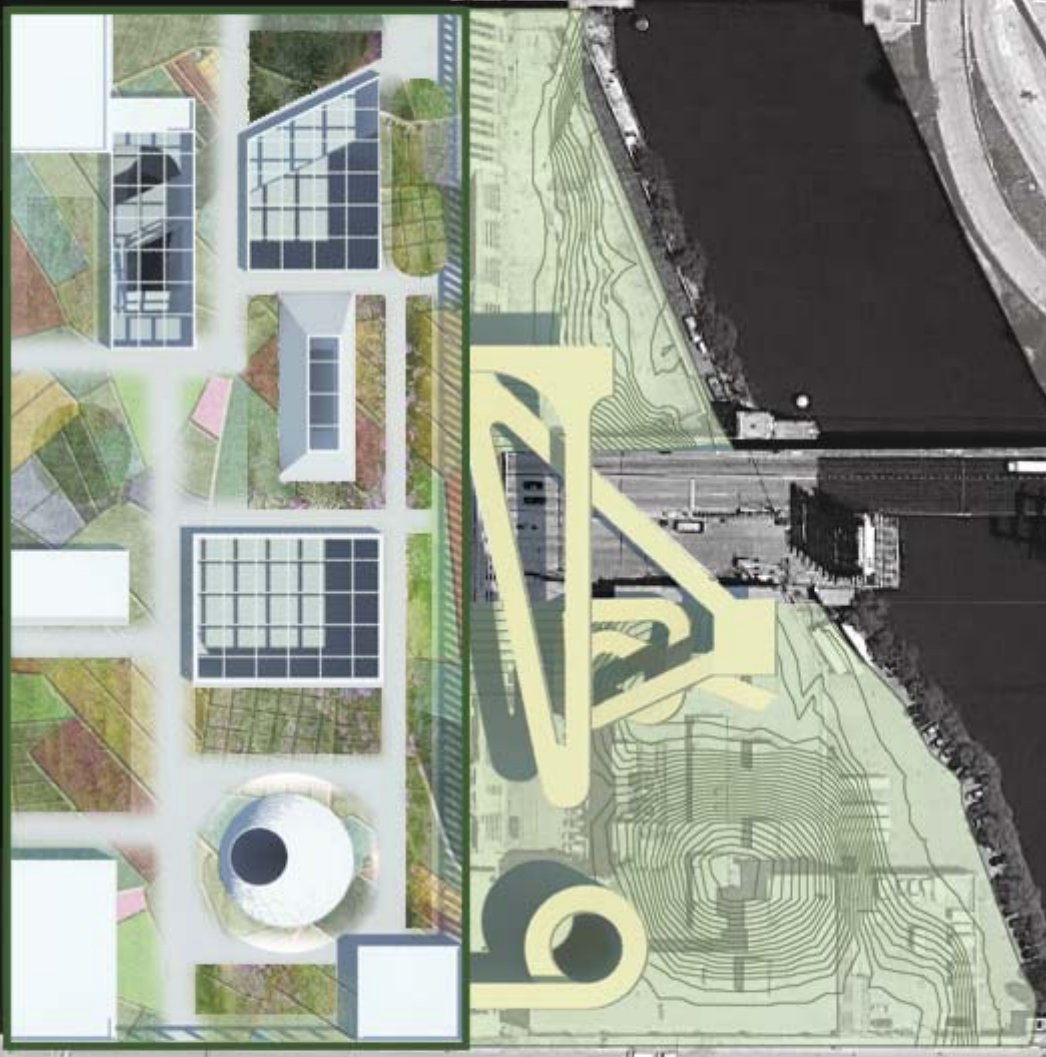
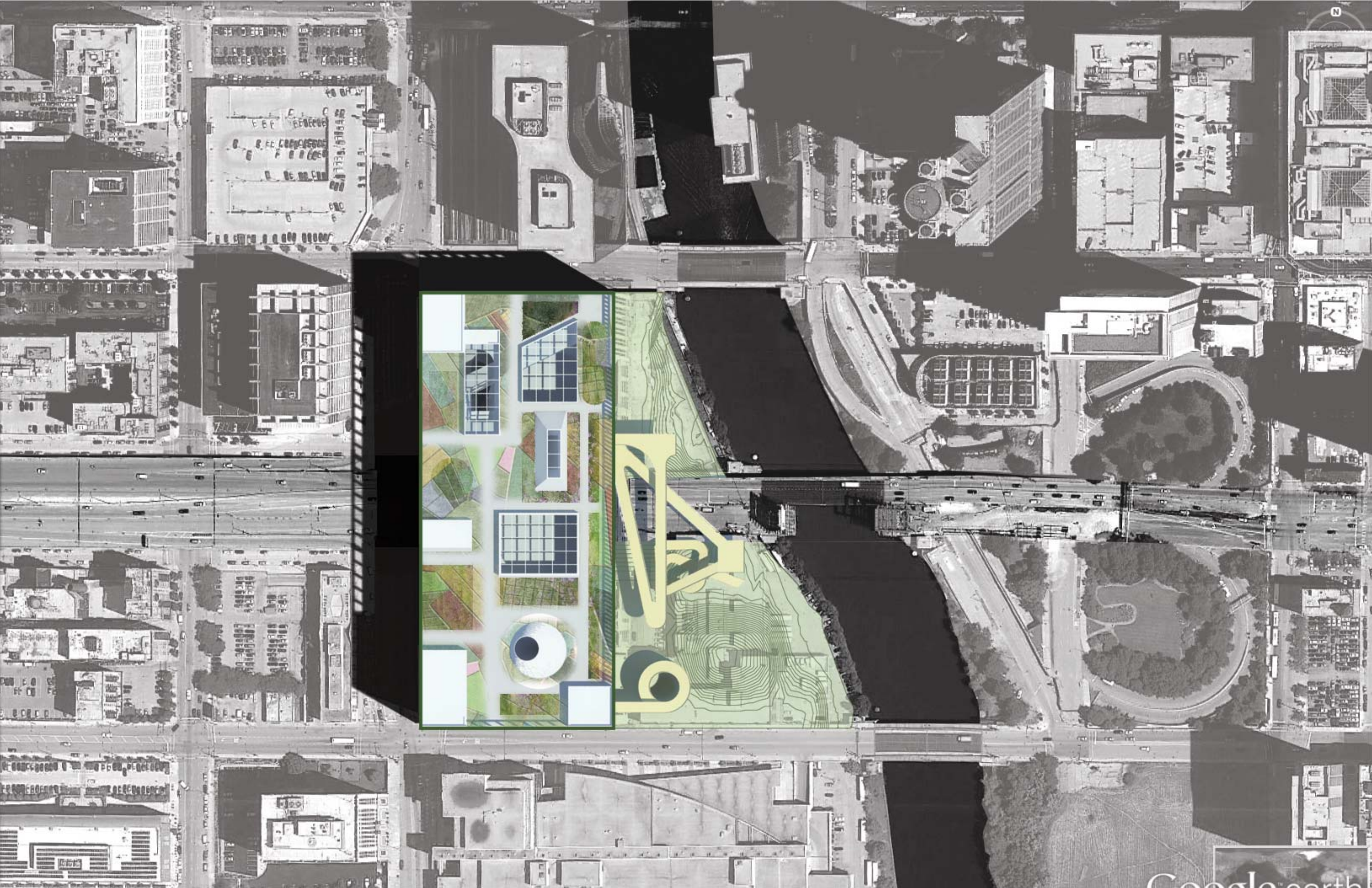










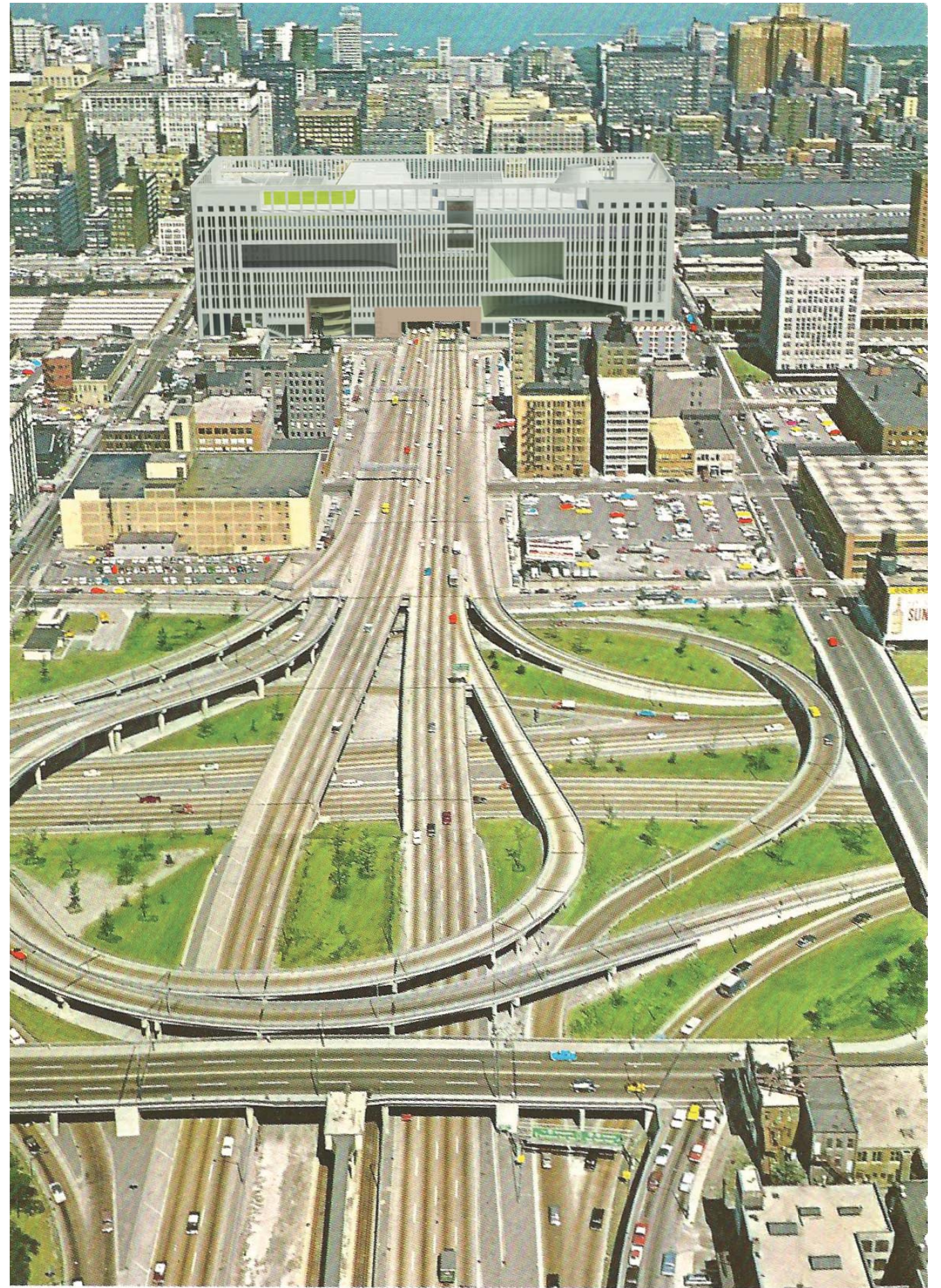






*Eisenhower Expressway*

*Photo by Penrod*



*Eisenhower Expressway*

*Photo by Penrod*

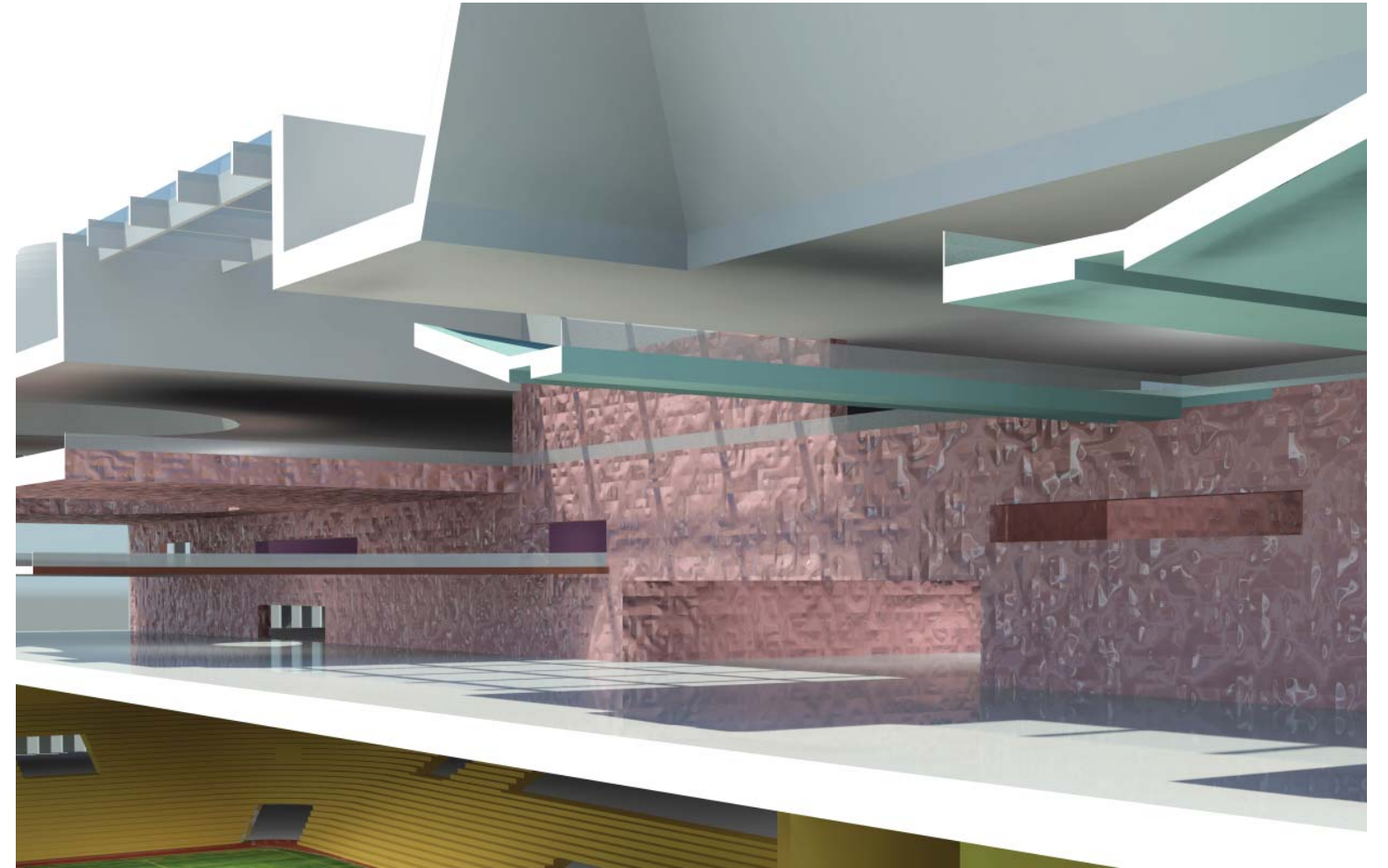








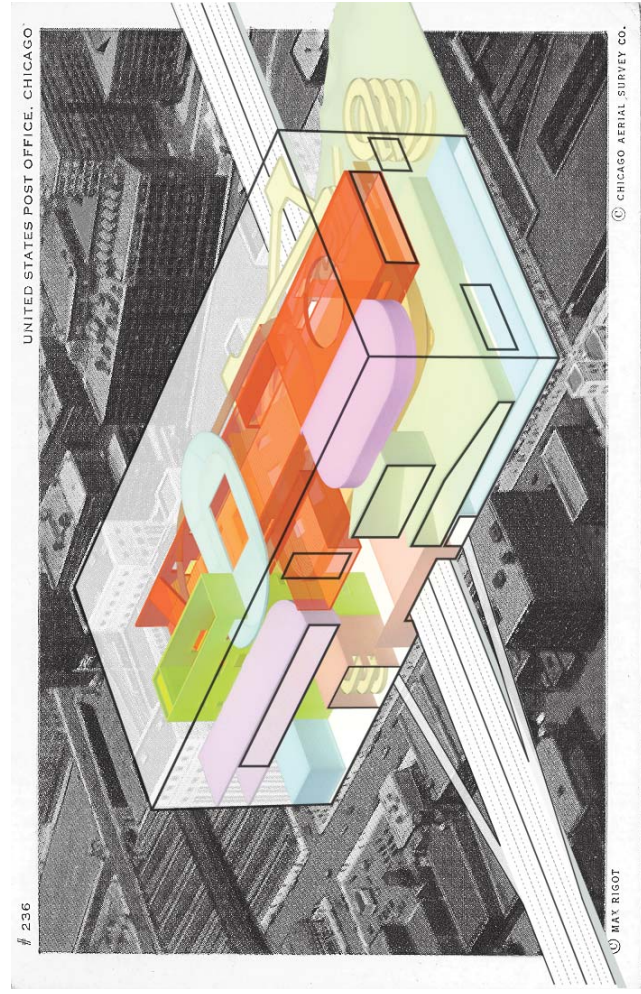
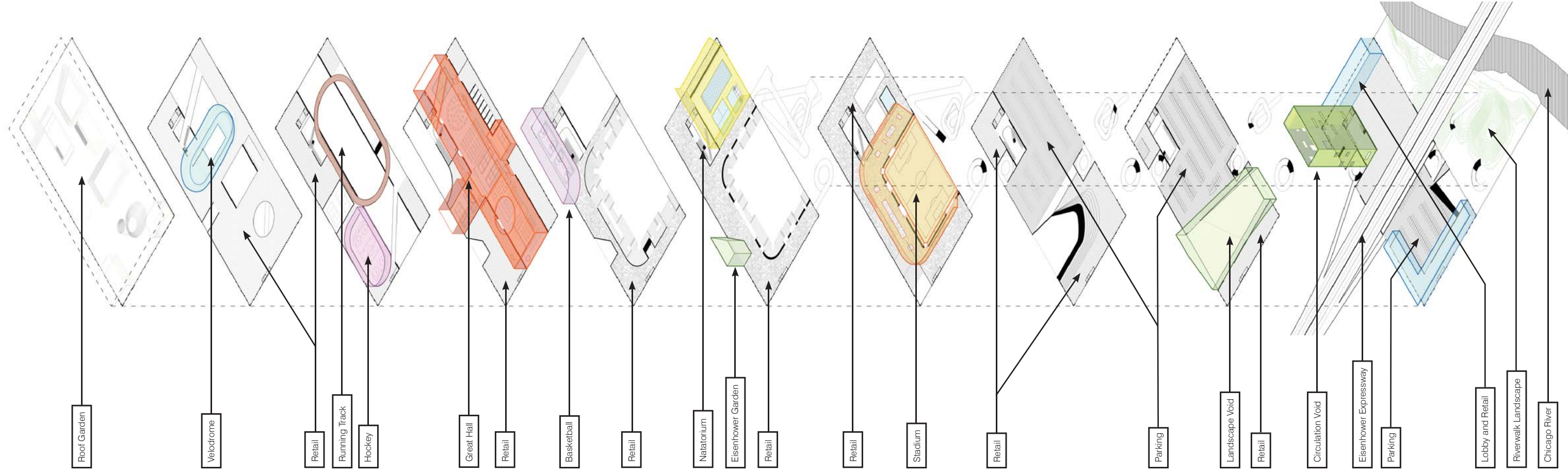




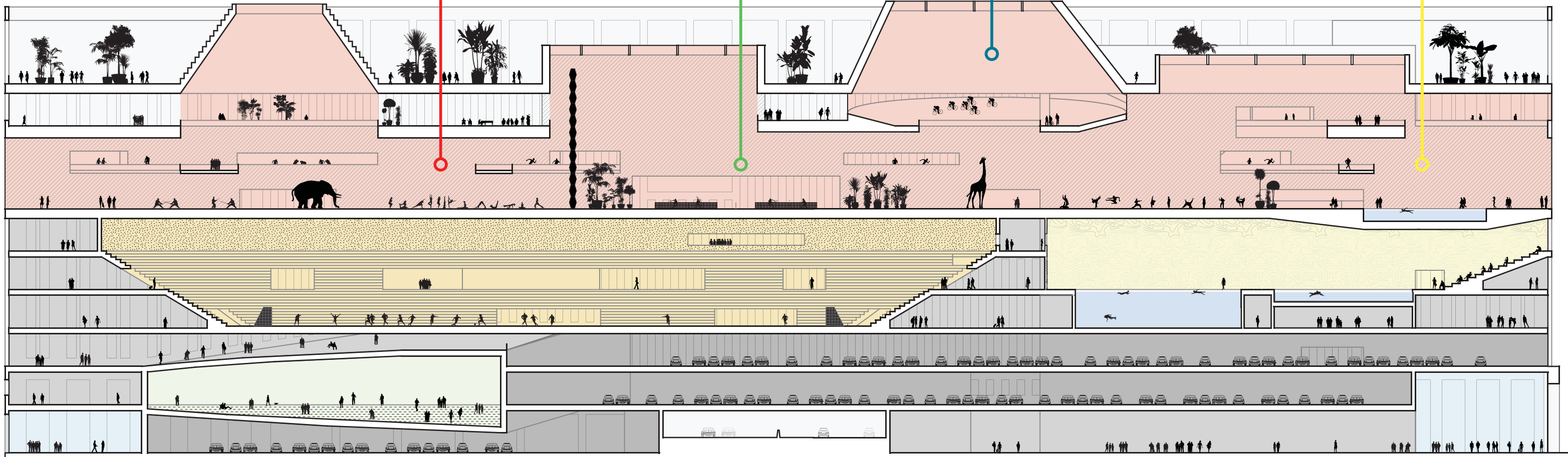
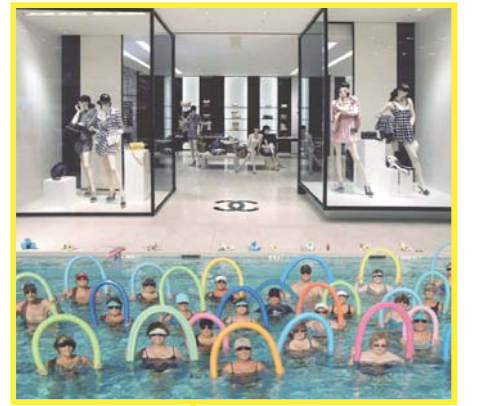
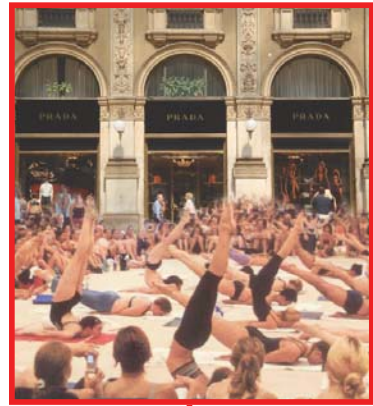












25 50 100



