



# **Pritzker Mediatheque**

---

## Renovation of Pritzker Park

ARCH593 Master's Project  
Prof. Dirk S. Denison  
Spring Semester, 2011  
Youkeun Song

## » Elevator Statement:

This project is about Renovation of Pritzker Park with refurbishing an underutilized urban pocket park, by adding a public community facility.



## » Project Goals:

- To revitalize an under-utilized urban central park and provide some pleasant experiences
- To accommodate community interaction and pride through facilities that support various cultural activities
- To propose a new program which is adjusted to an expecting future era

## » Case Statement

This renovating of Pritzker Park, which is beside W. Van Buren Street and S. State Street, is necessary to vitalize this neglected park. This is because the park doesn't play a role even as an urban rest space. Namely, it is hard for people to take a rest even at lunchtime. Although there are a lot of students who stay around the park for long time in a day because of a few of education institutions and Chicago Public Library, they are not its main users. However, they can be if a facility where they can perform and enjoy their own cultural activities is established. Its renovation will contain a facility that integrates culture, leisure and recreation functions.

For the sake of making sure of programmatic characteristics, there is an additional importantly-considered environment around this park. The park adjoins Library Station for South Loop of Chicago CTA and a lot of offices exist around here.

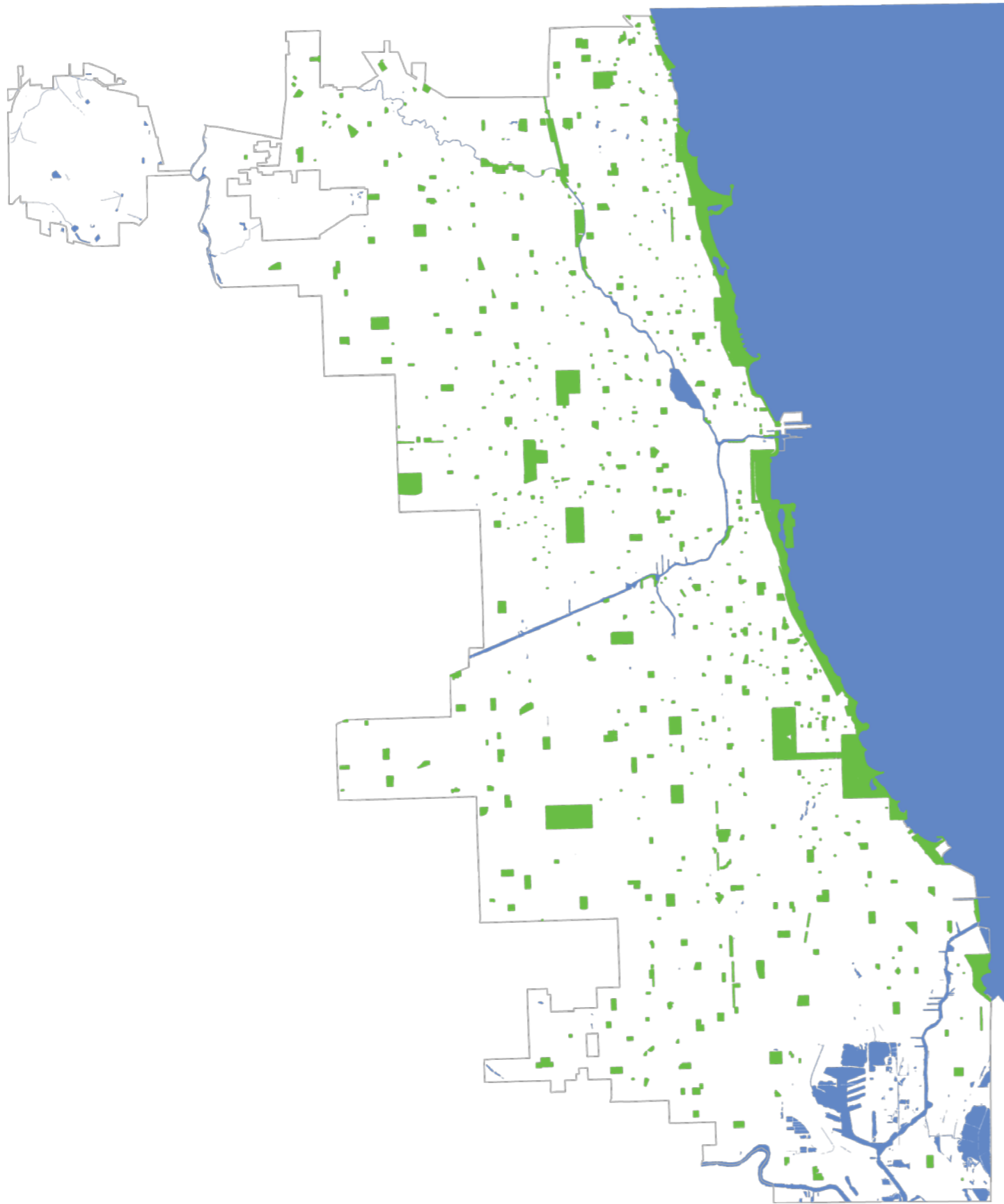
It means there are a lot of commuters and float population as daily office workers. This facility will provide them vitalization by arranging a various spaces where they can take a rest or enjoy students' performing activities on their routine commuting path.

The most important space for this facility is a multifunctional open space as a plaza. This main function is for an inner park because of the origin of this site. The added one is a performing stage and auditorium. The other sub and supporting programs such as exhibition rooms are arranged in surrounding this open space.

## » Guiding Principles

- A characteristic of healthy cities is the ability to support social and cultural activities in both interior and exterior environments.
- A successful community asset is comfortable, affordable, accessible and sustainable.
- Existing parks in the city of Chicago create a multitude of beneficial synergies by cooperating with the communities they serve.
- The positive qualities of the existing Pritzker Park should be emphasized while the challenges are mitigated.
- A community facility has a multifunctional and flexible space where a variety of activities are easily perceivable at any surrounding places to stimulate people's interests and encourage their activities.

## » Parks in Chicago



7600+ acres of parkland

### 570 parks

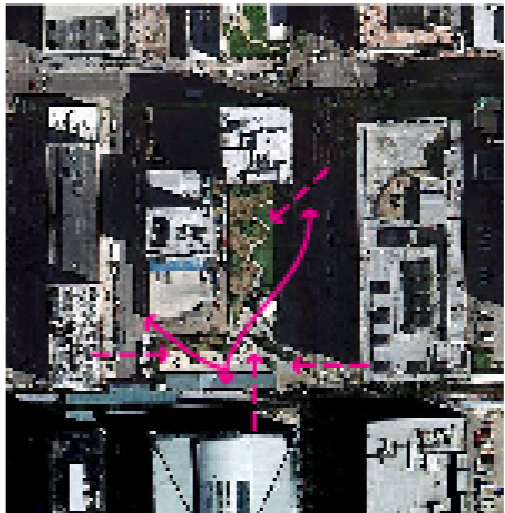
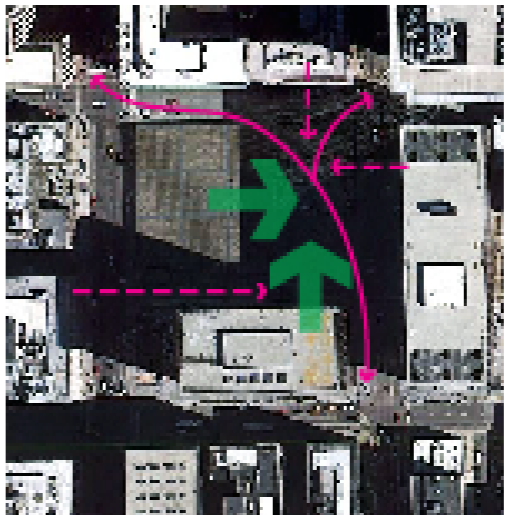
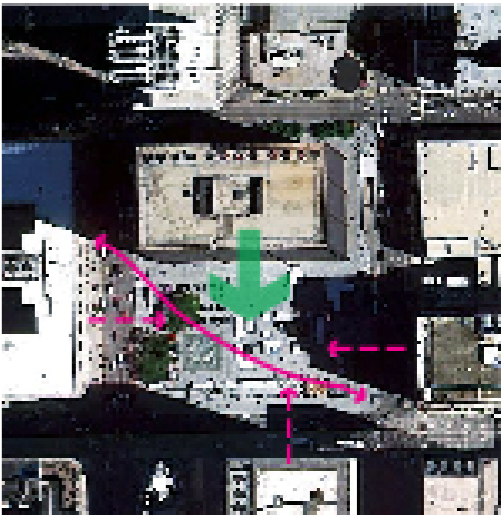
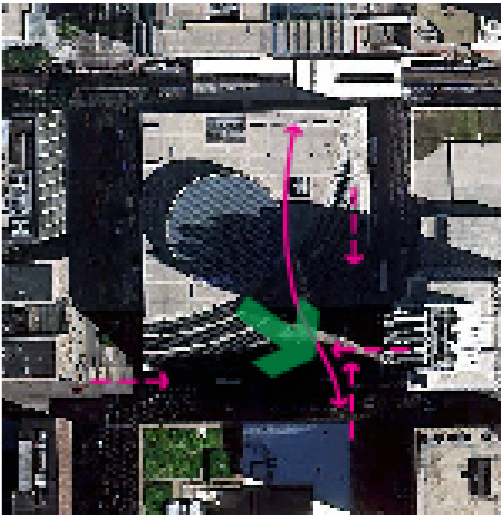
- 534 baseball fields
- 2 wheelchair softball/baseball fields
- 518 playgrounds
- 90 accessible playgrounds
- 220 stunning facilities (most can play host to your next event)
- 24 miles of lakefront
- 31 beaches
- 15 accessible beach walks
- 86 pools
- 70 accessible pool features
- 70 fitness centers
- 18 dog friendly areas
- 10 museums
- 9 harbors
- 9 ice skating rinks
- 8 skate parks
- 6 golf courses
- 90 gardens
- 50 community gardens
- 2 world-class conservatories
- 17 historic lagoons
- 11 savannas/woodlands
- 5 wetlands
- 22 prairies/grasslands
- 1 nature center
- 1 urban farm
- 1 organic greenhouse

Chicago has various kinds and numerous numbers of parks. However, these parks are not for general citizens' relaxing places during weekdays, but for special event place during weekends. That is, urban Plazas located in Chicago downtown are friendlier for them to enjoy rest in their day lives.

### Contents of Chicago Park District



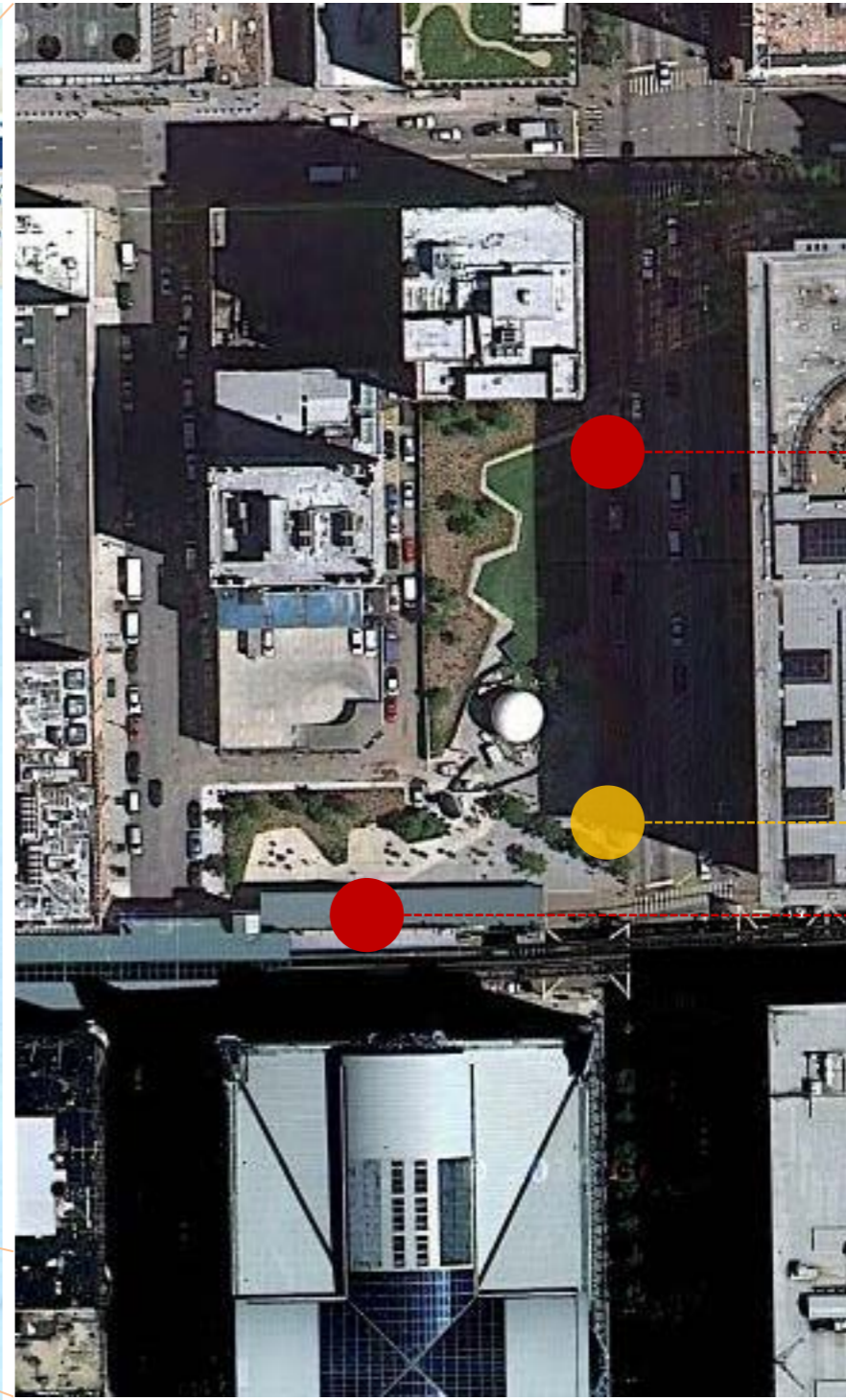
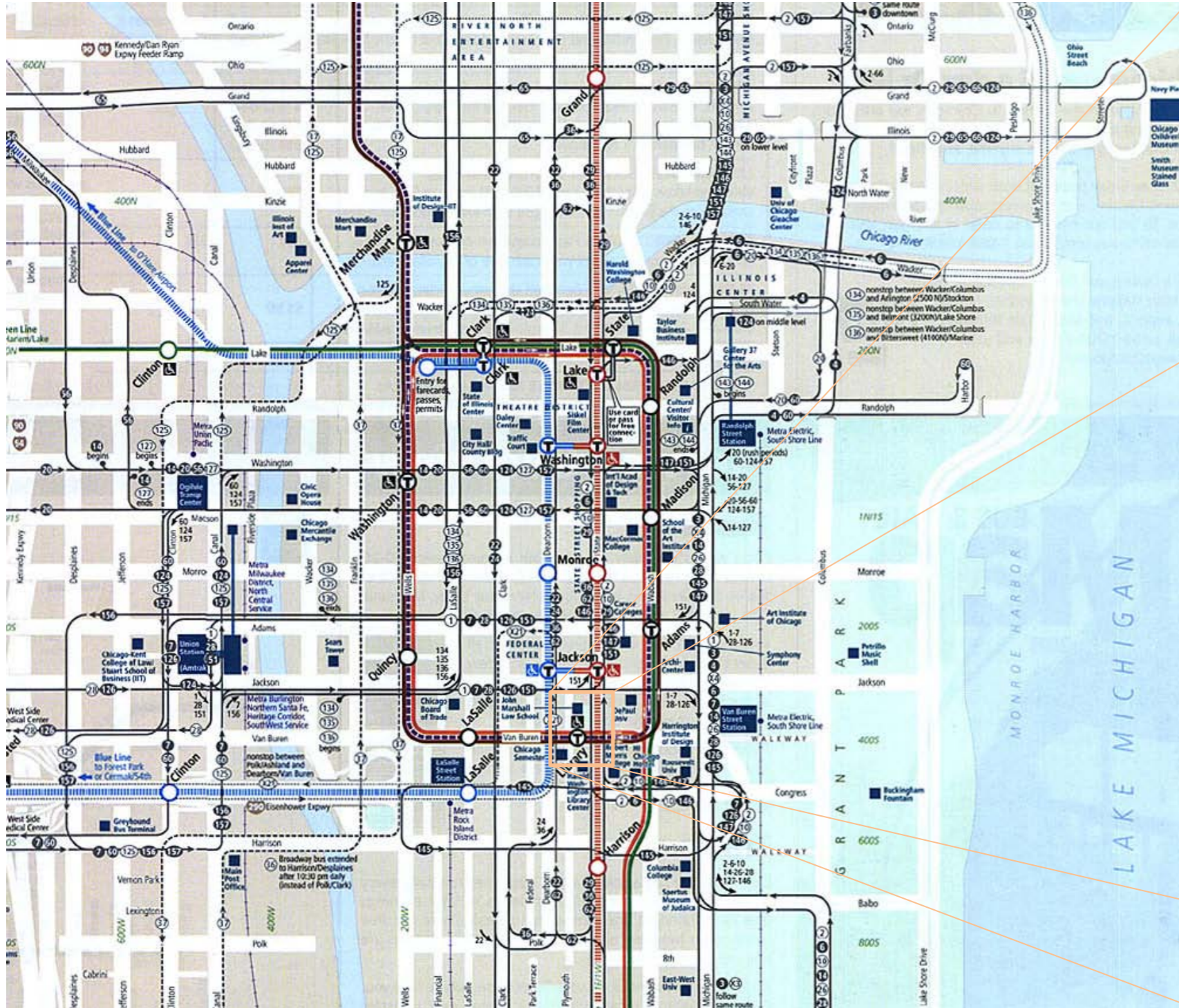
» Urban Structure of Downtown



- - -> Potential Users
- > Commuters
- > Immediate Users

Pritzker Park doesn't have immediate users because there isn't a public service facility in the park.

## » Site Analysis: Transportations



→ Jackson Station:  
Red Line

→ Bus Stop

→ Library Station:  
The L

» Site Analysis: Neighborhood

Distribution of Colleges



- General Colleges
- Art Schools
- Music and Performance Schools
- Site

Distribution of Cultural Facilities



- Library
- Museum
- Auditorium

## » Site Analysis: Neighborhood

### Harold Washington Library Center of Chicago Public Library

#### LOWER LEVEL

Cindy Pritzker Auditorium  
South Hall  
Multipurpose Rooms  
Video Theater

#### FIRST FLOOR

Information Desk  
Popular Library  
YOUmedia

#### SECOND FLOOR

Thomas Hughes Children's Library

#### THIRD FLOOR

General Information Services  
Circulation Desk  
Computer Commons  
Book Check-Out and Check-In  
Library Card and Voter Registration  
Applications  
Copy Center  
Interlibrary Loan  
Newspapers and General Periodicals

#### FOURTH FLOOR

Business, Science & Technology

#### FIFTH FLOOR

Government Publications  
Municipal Reference Collection  
Social Sciences Periodicals  
Talking Book Center (Books for the Blind, Visually Impaired or Physically Disabled)

#### SIXTH FLOOR

Social Sciences & History

#### SEVENTH FLOOR

Literature and Language  
Chicago Authors Room

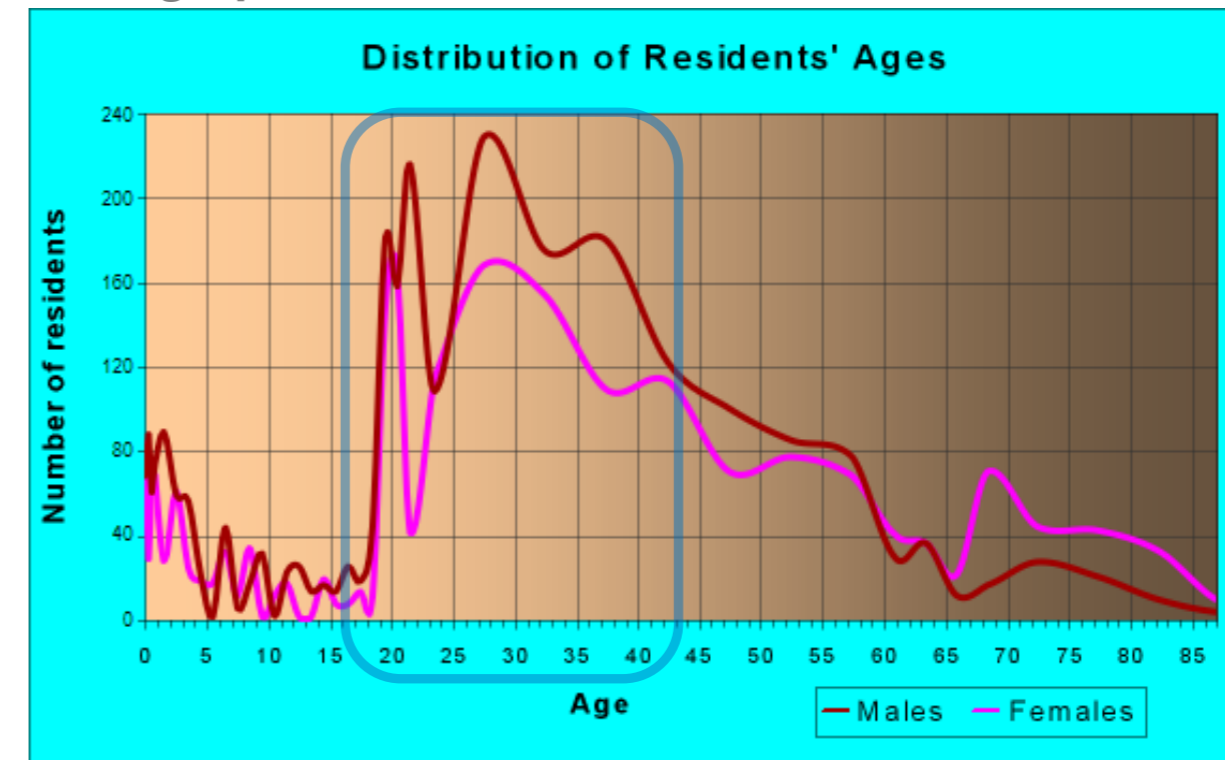
#### EIGHTH FLOOR

Visual and Performing Arts  
Listening/Viewing Center  
Music Practice Rooms

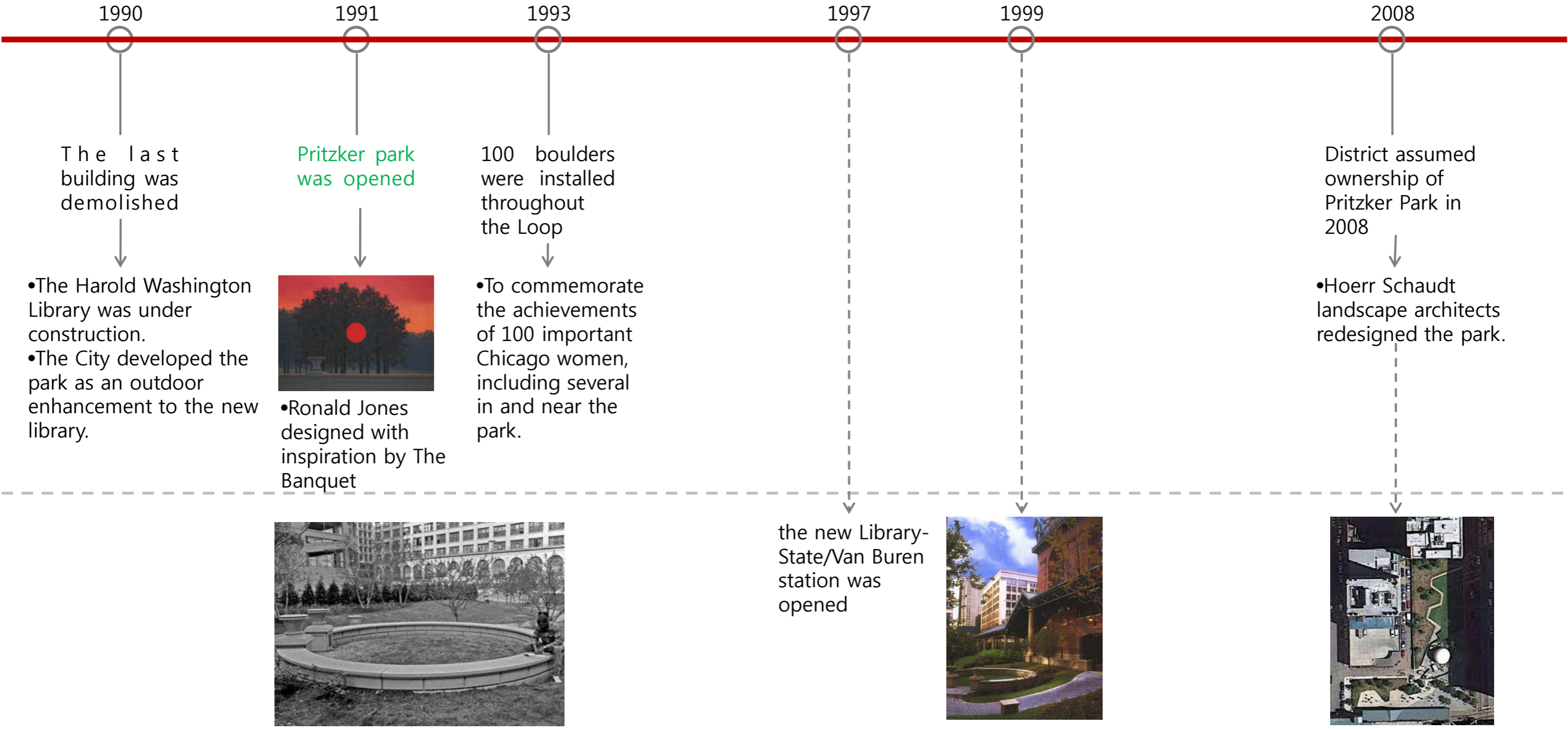
#### NINTH FLOOR

Corporate and Private Events  
Special Collections and Preservation  
Harold Washington Archives and Collections  
Special Collections Exhibit Halls  
Winter Garden

### Demographics

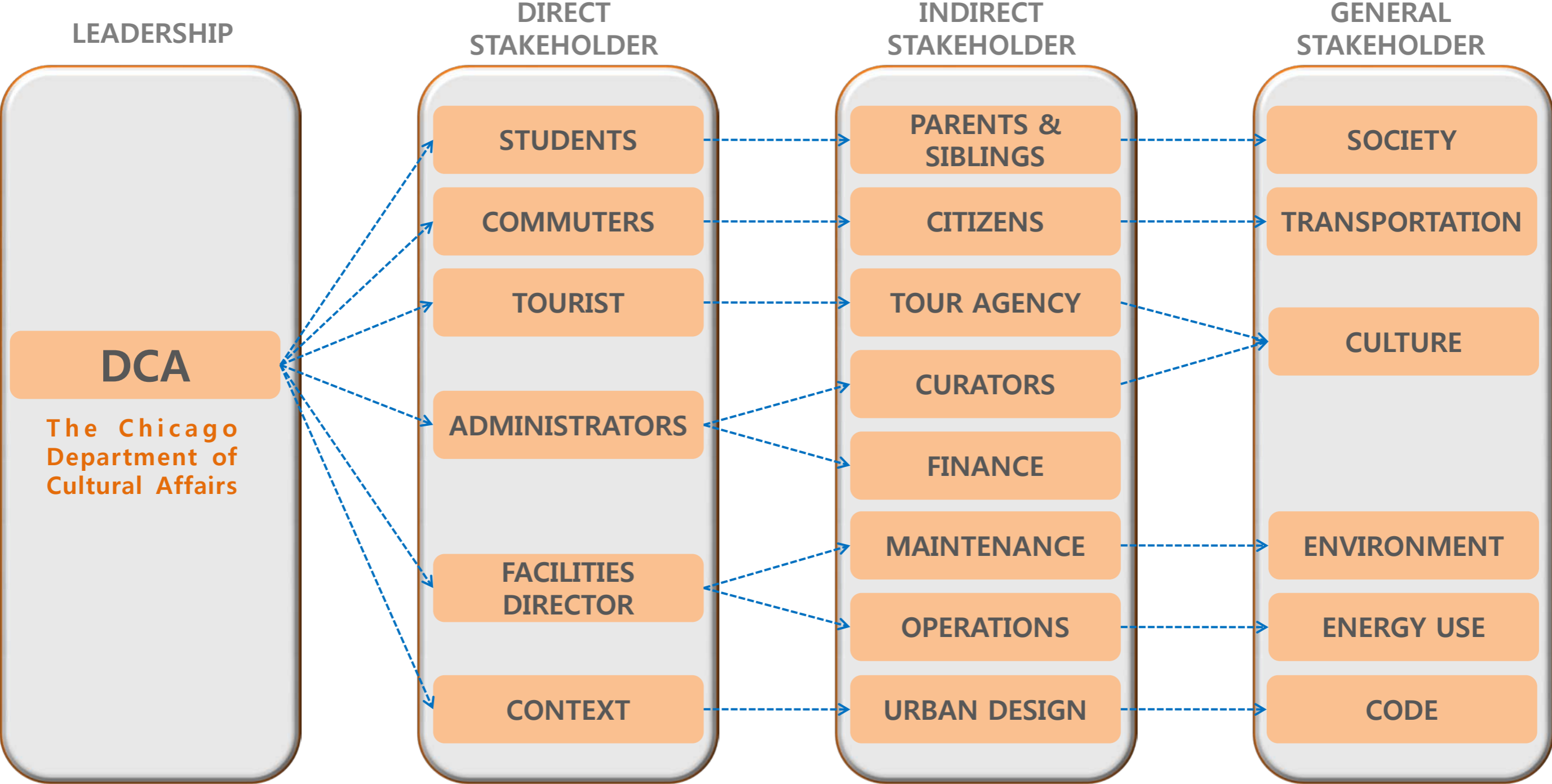


# » History of Pritzker Park

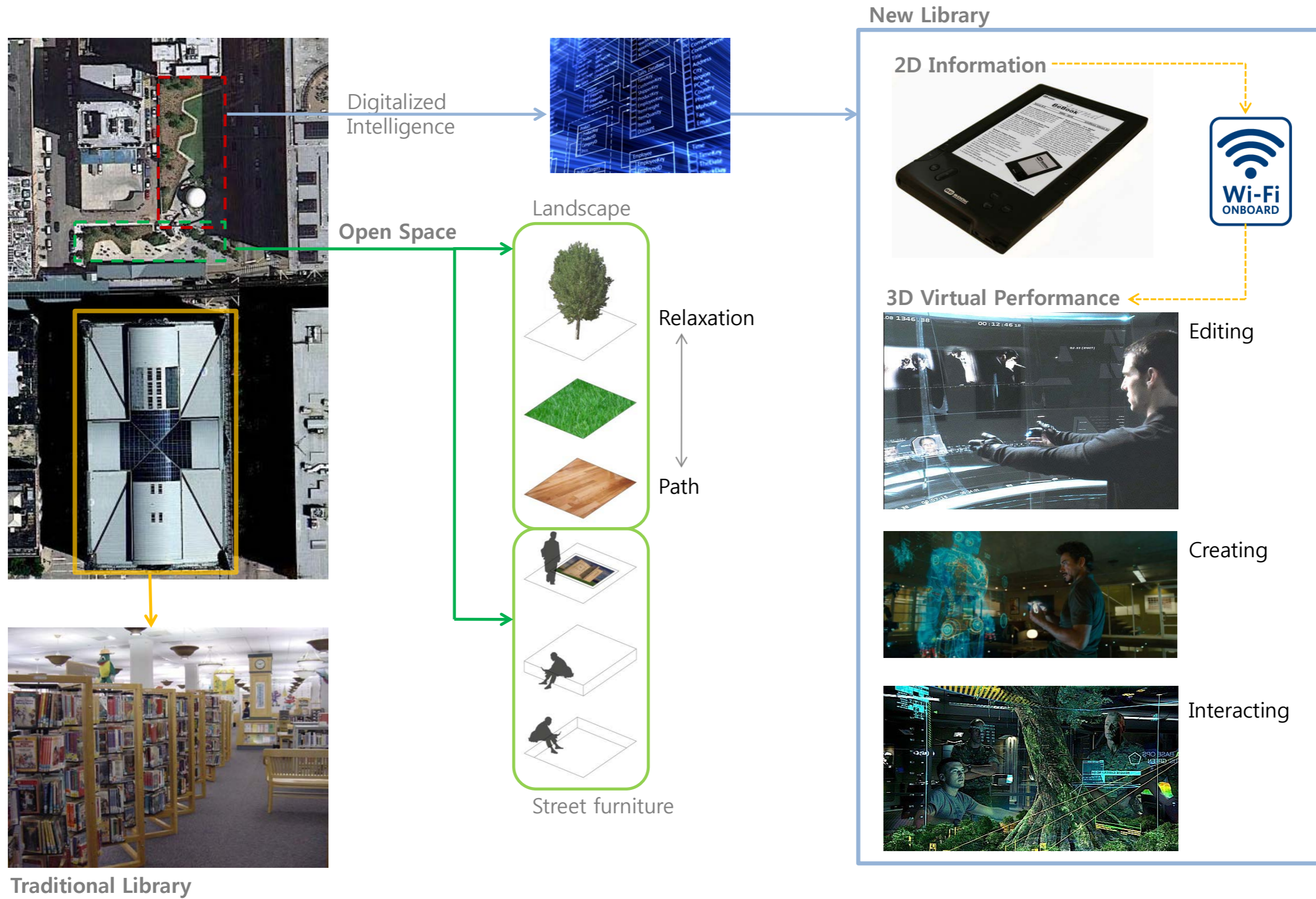




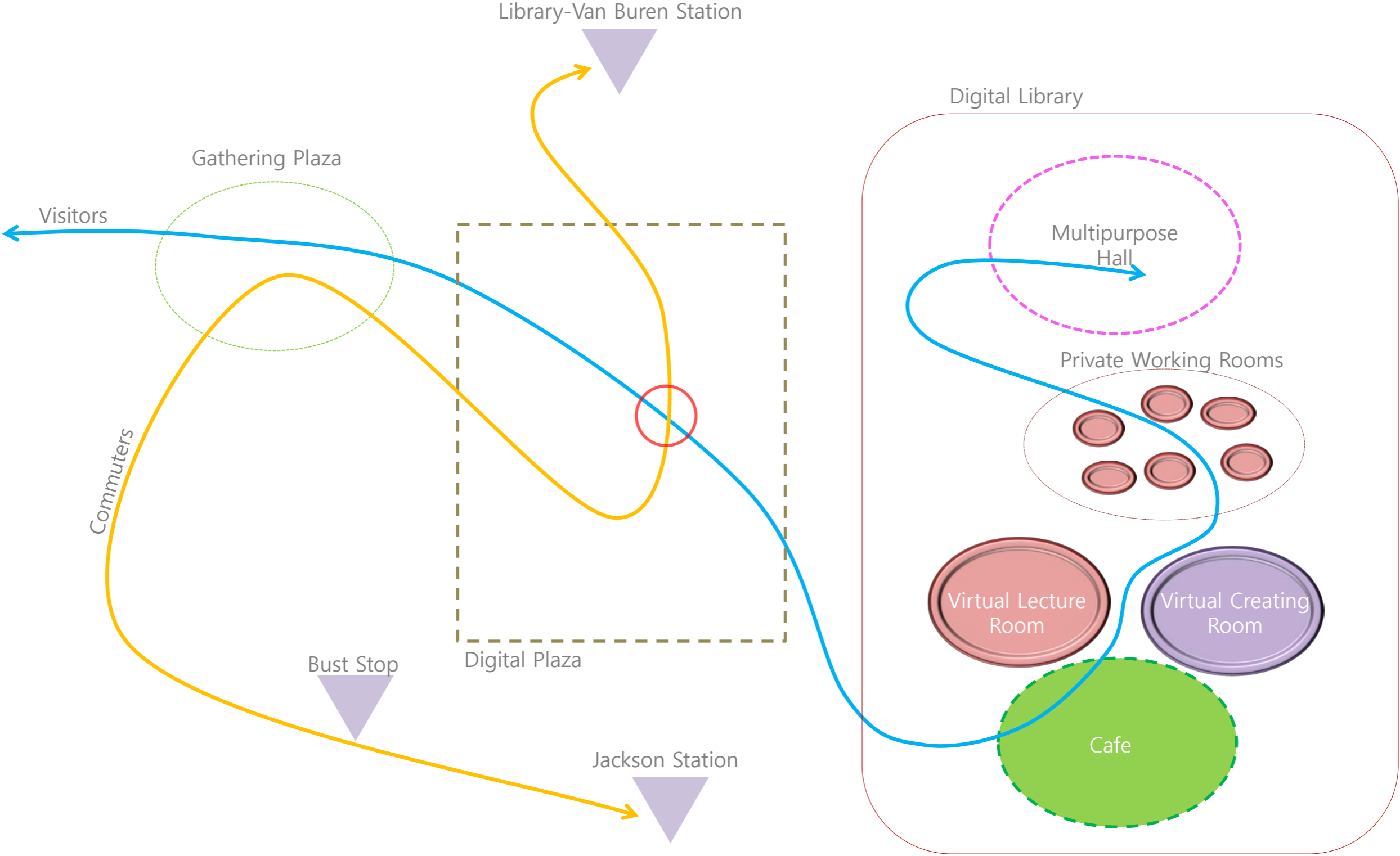
» Stakeholders



# » Program

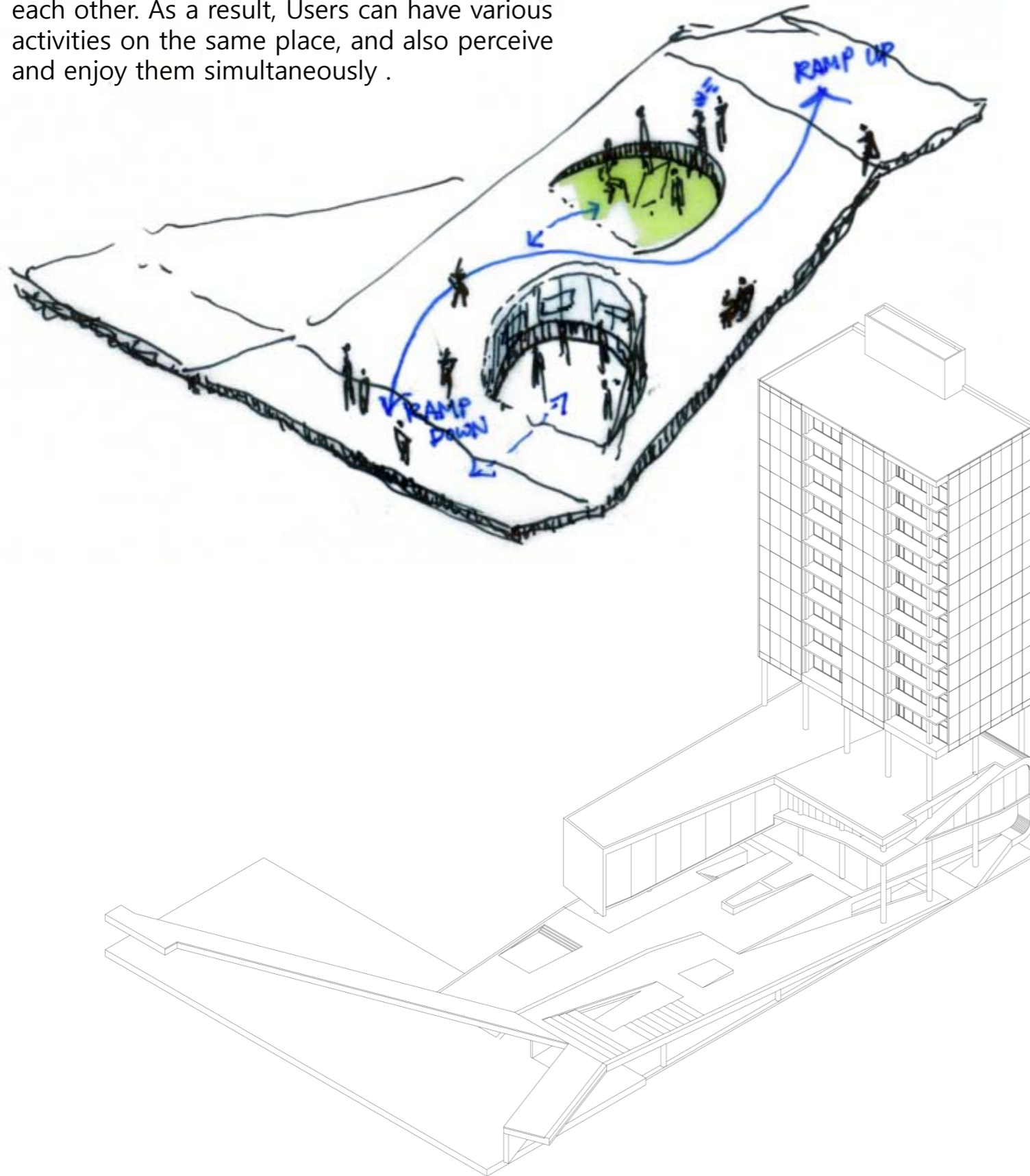


» Program: Relationship

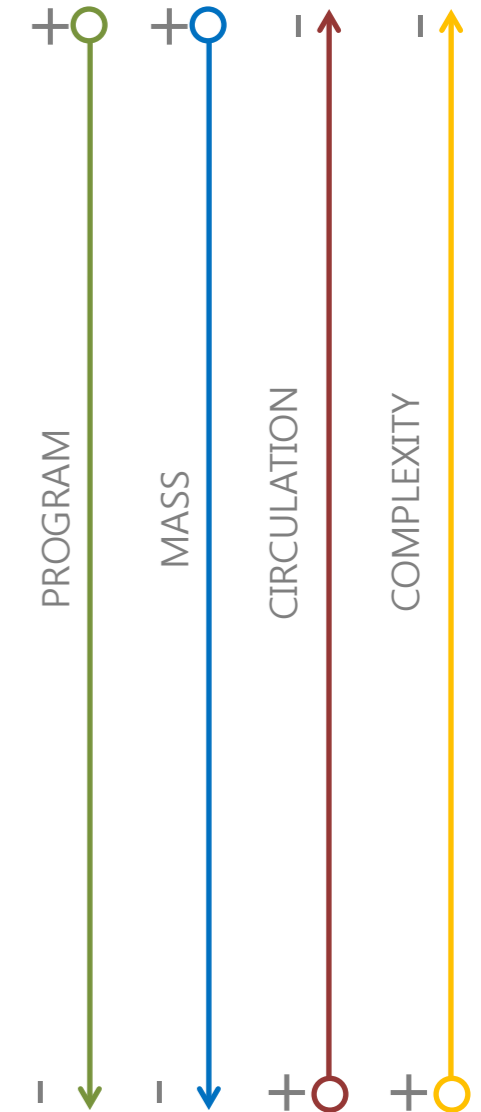


## » Basic Idea

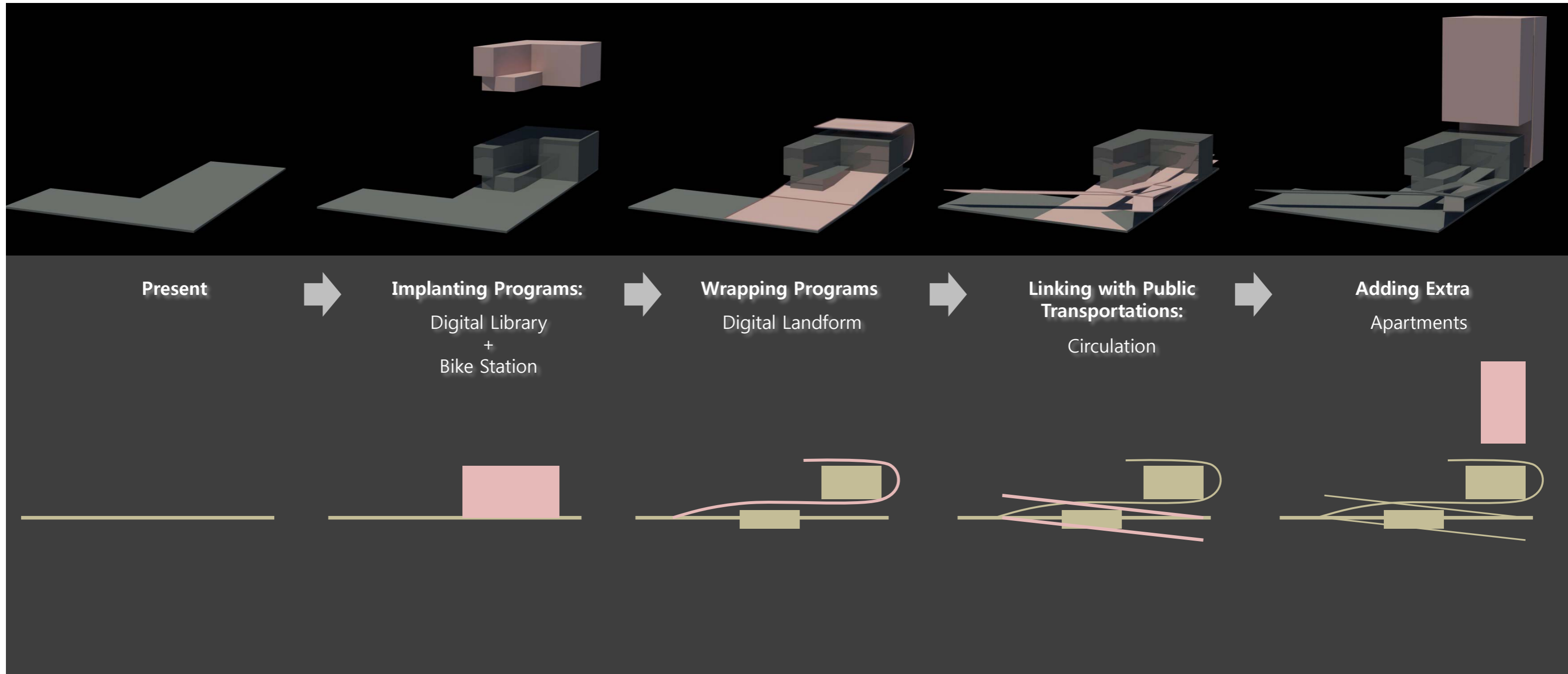
Landform: Park and Programs are integrated each other. As a result, Users can have various activities on the same place, and also perceive and enjoy them simultaneously .



## Design Strategy

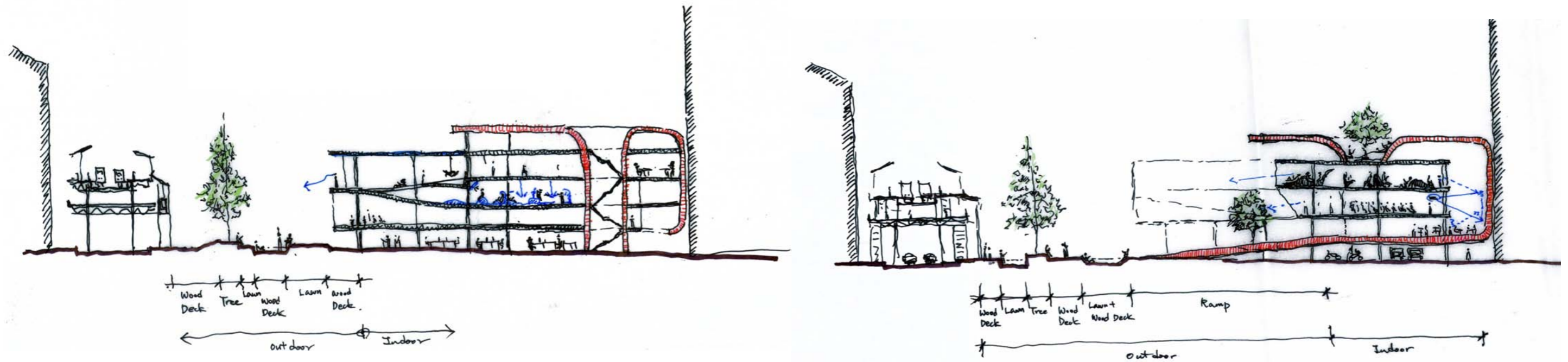


## » Design Process



# » Space Concept: Section Study of Digital Library

## Scheme 1

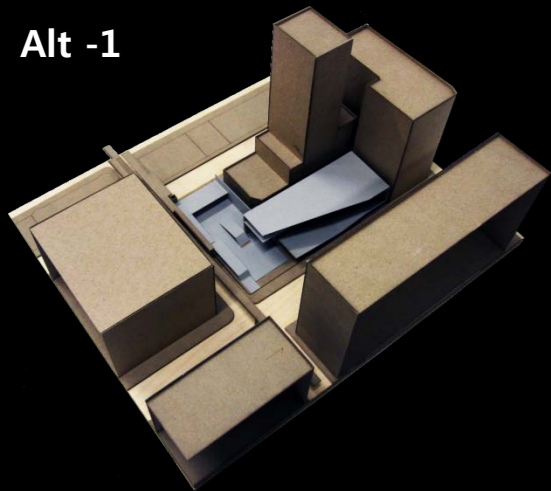


## Scheme 2



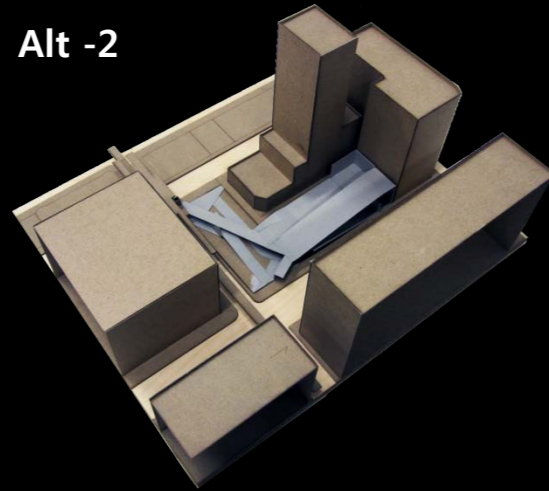
Studies for Landforms

Alt -1



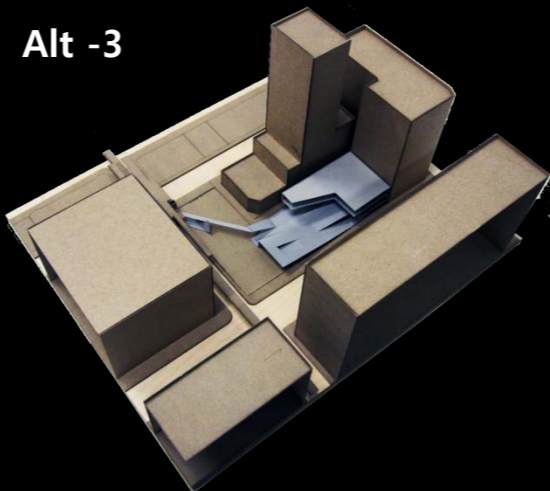
Programs > Park

Alt -2



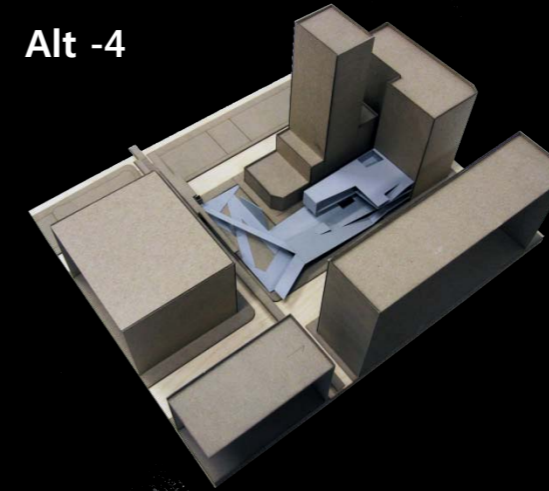
Programs < Park

Alt -3

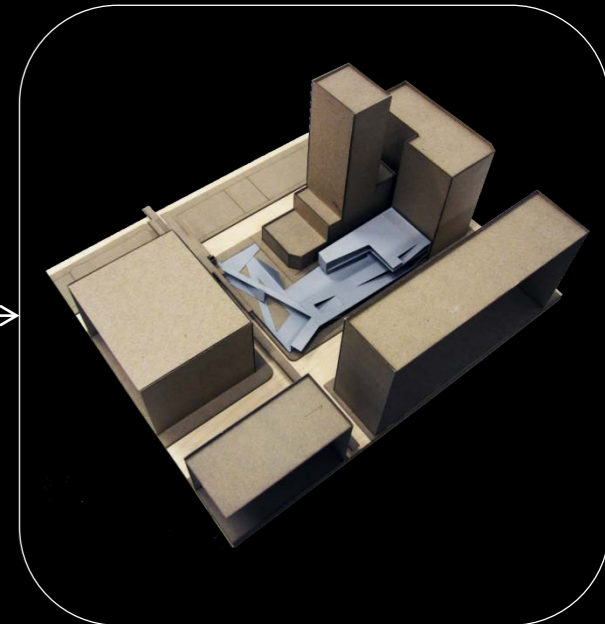


Programs + Park

Alt -4

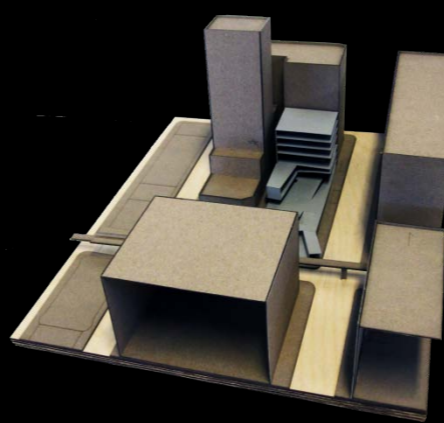


Programs = Park

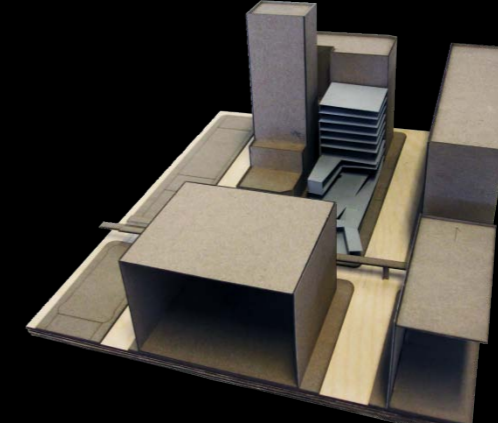


Studies for Proportion of Tower

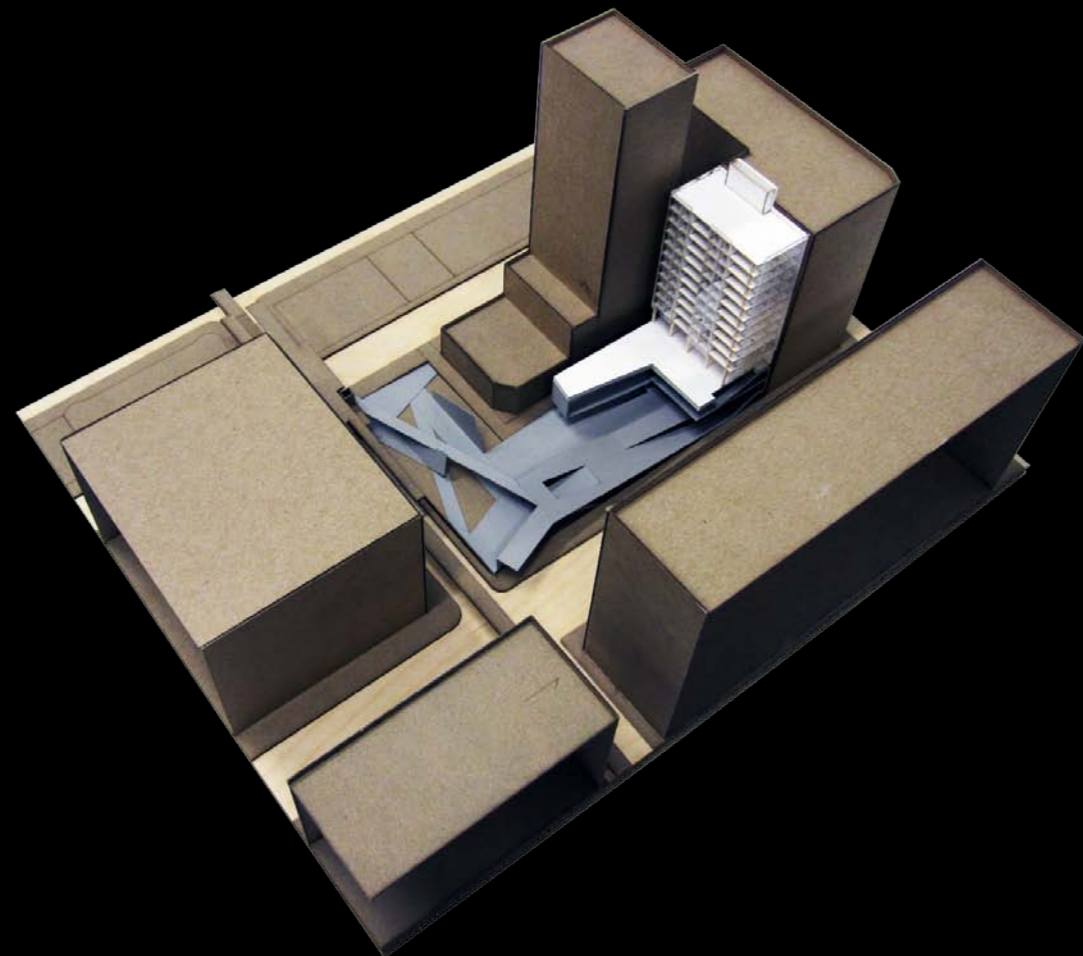
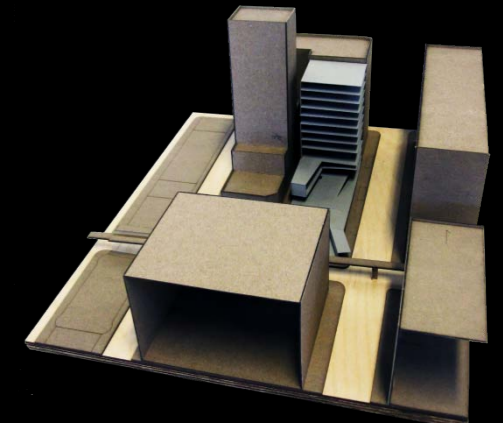
Low



Medium

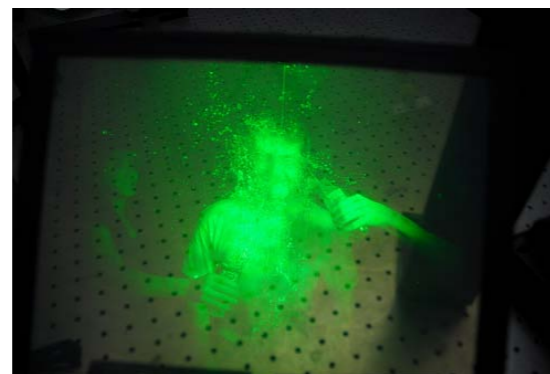
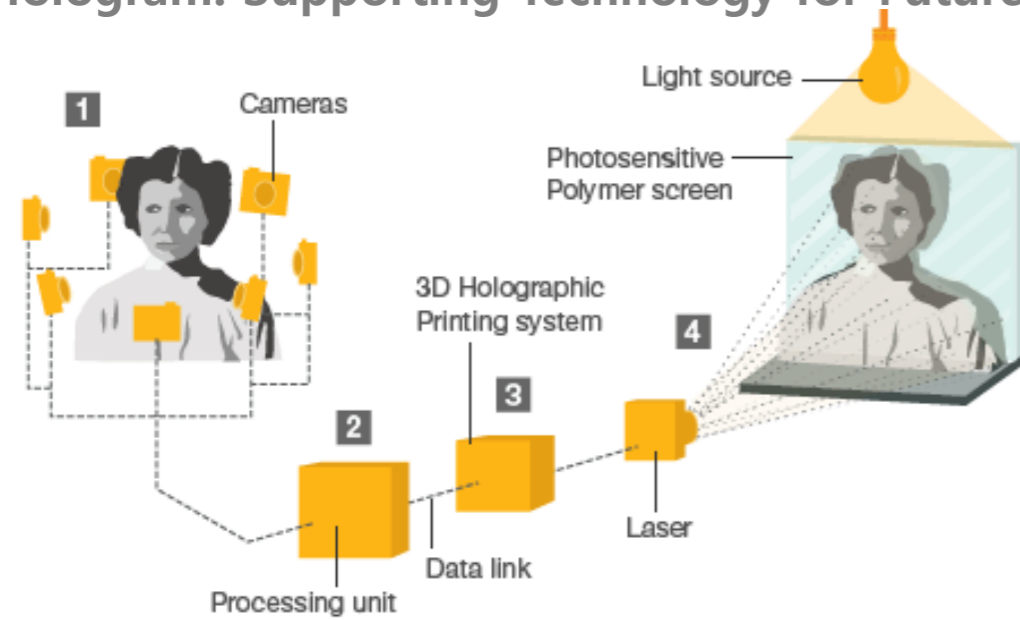


High

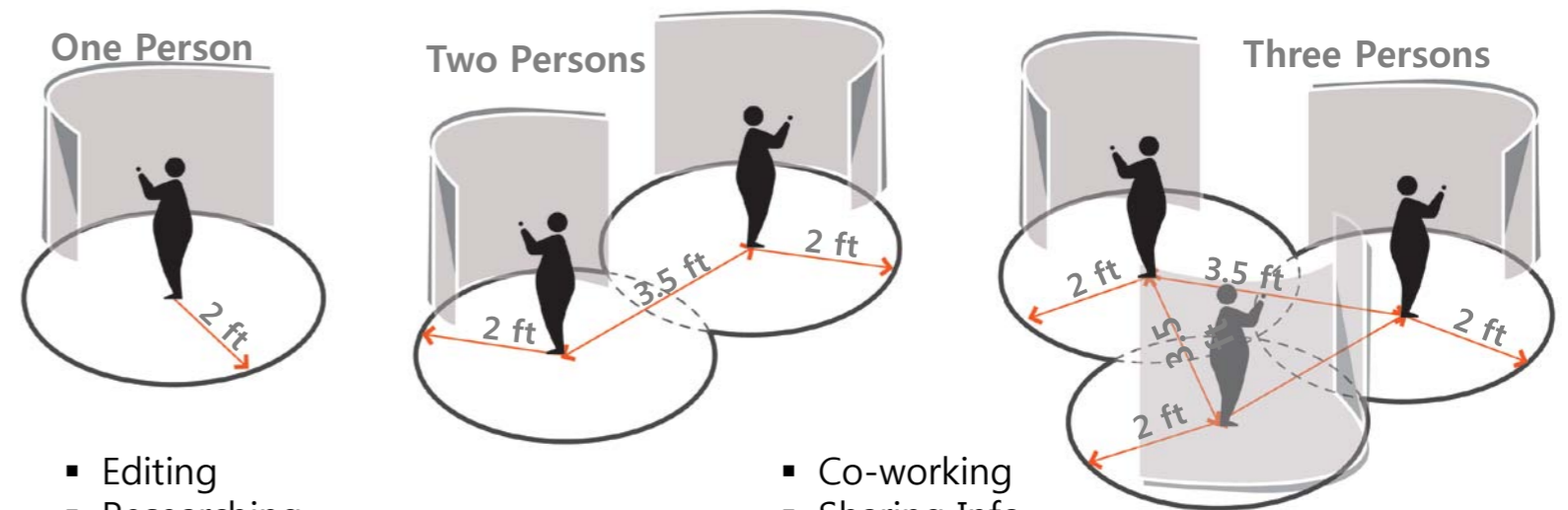


## » Modules

### Hologram: Supporting Technology for Future Medium

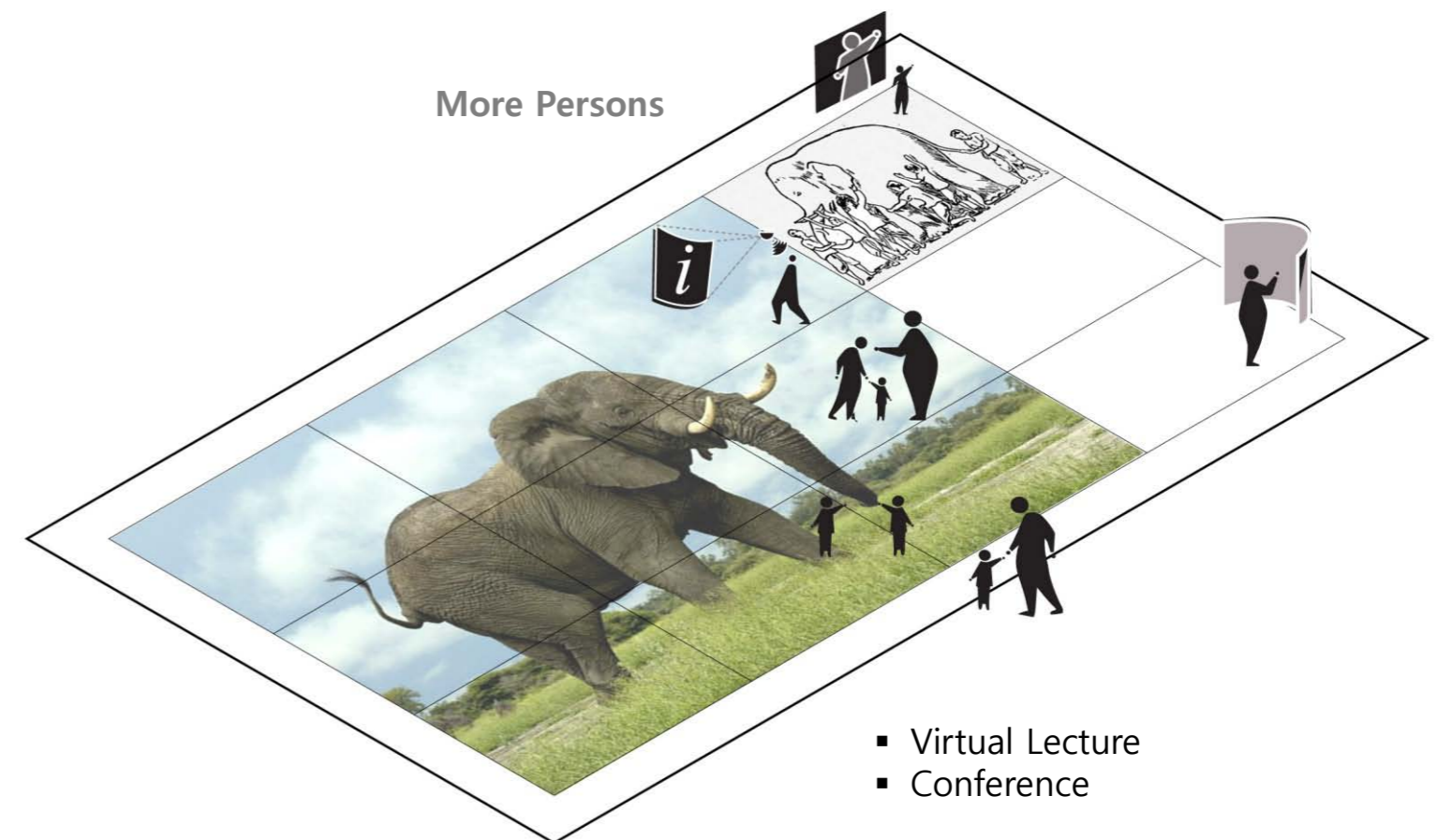


### Units: Visual Lab



- Editing
- Researching
- Studying
- Amusing

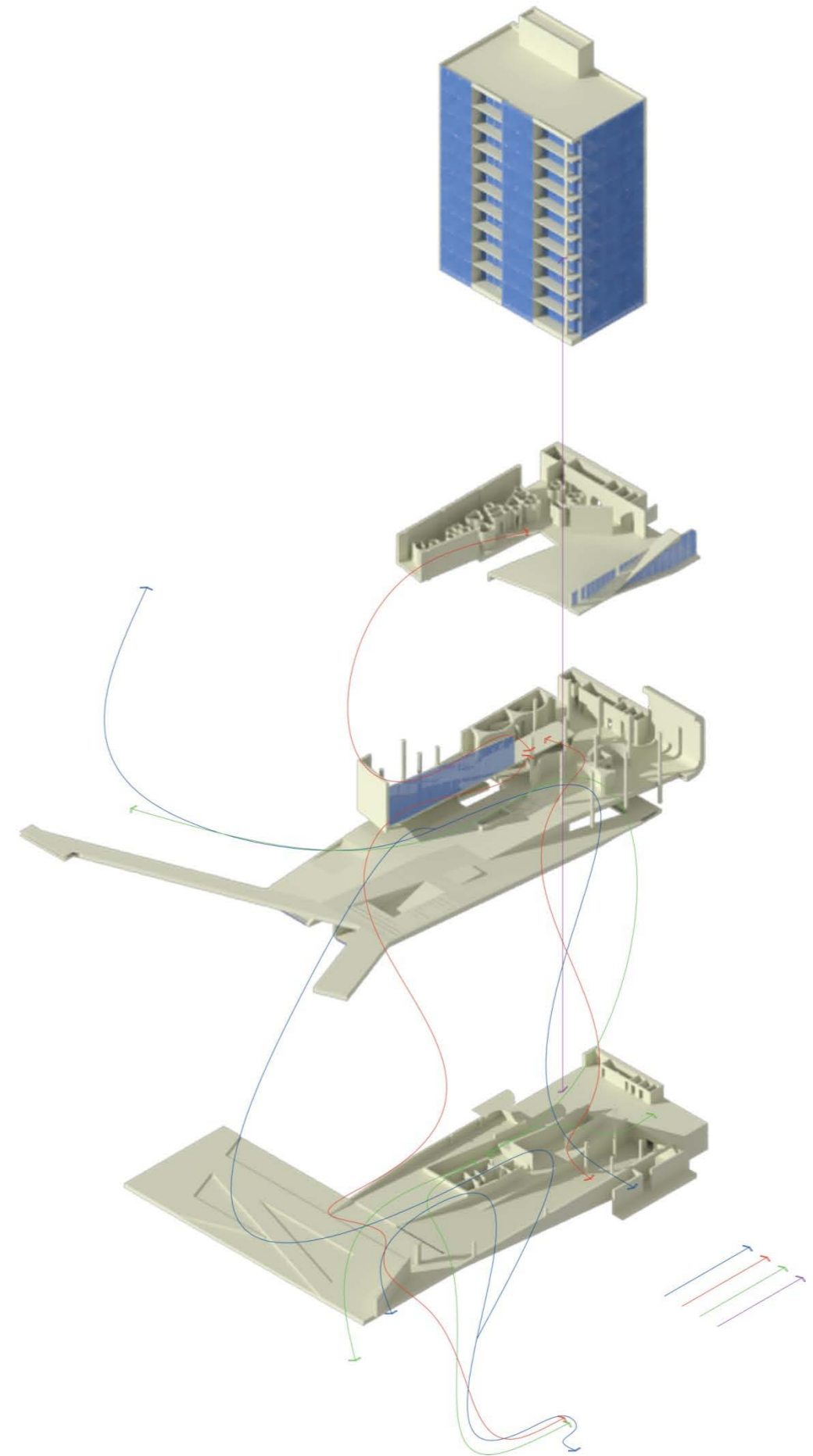
- Co-working
- Sharing Info
- Teaching & Learning
- Playing

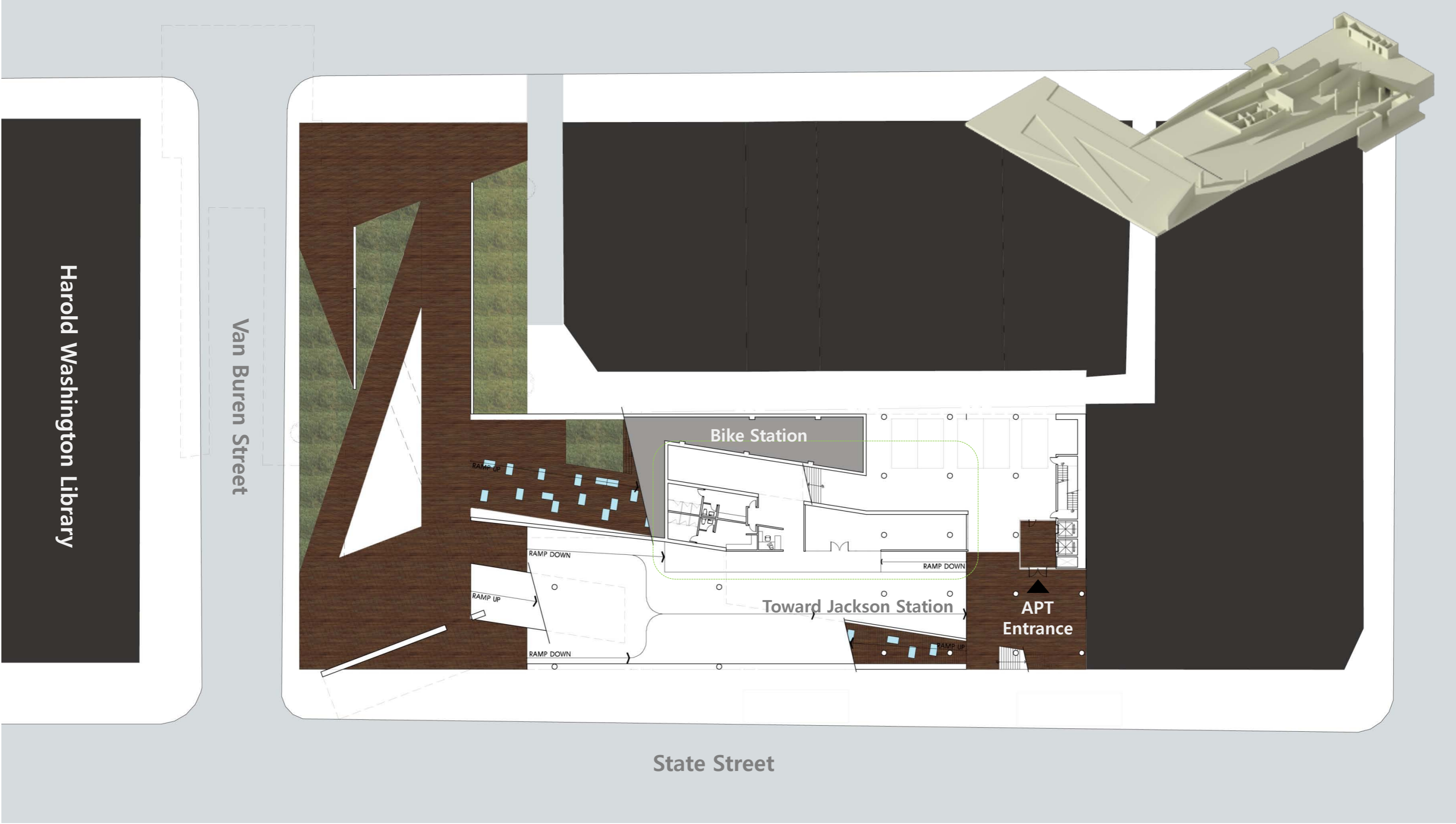


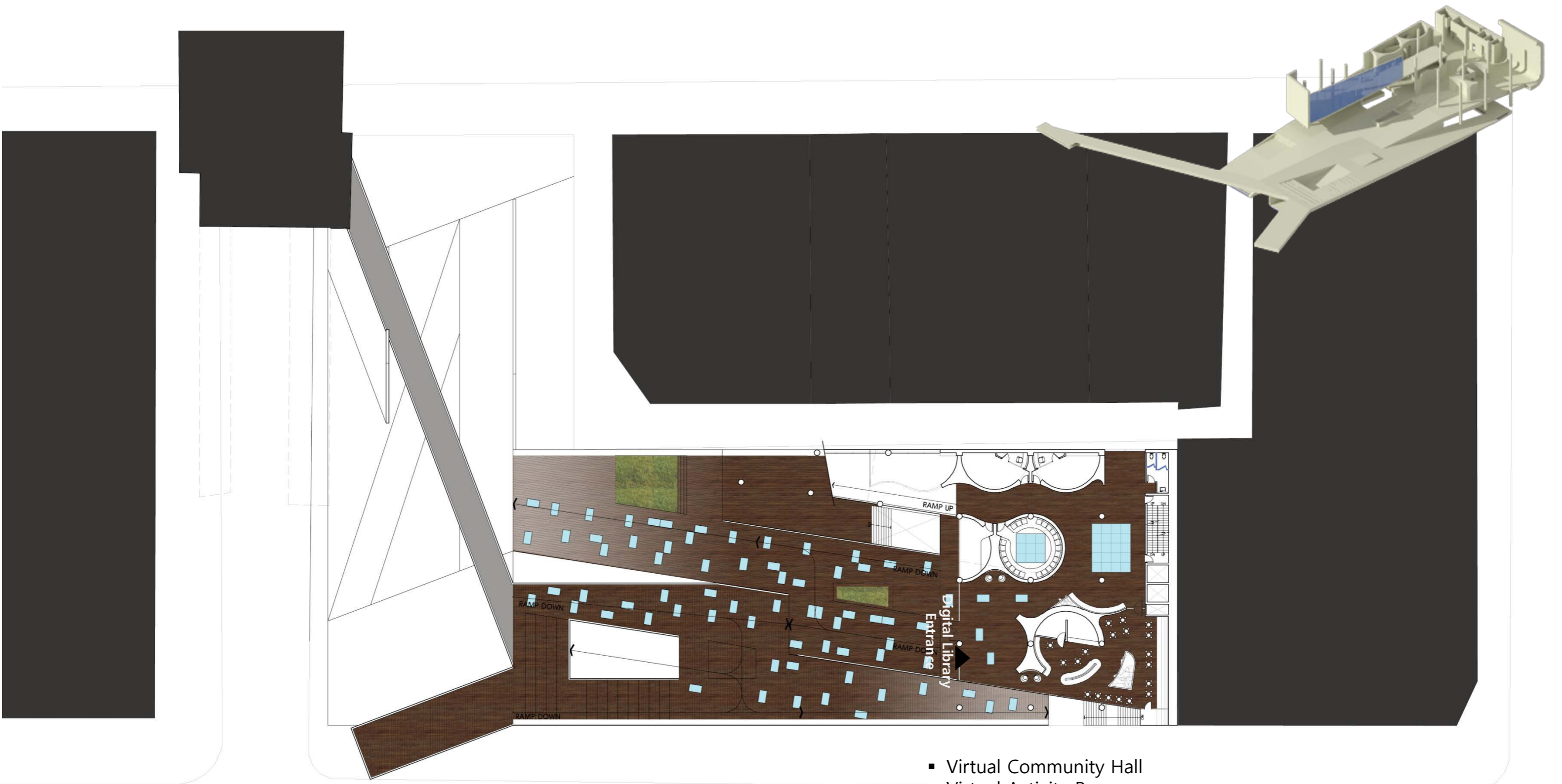
- Virtual Lecture
- Conference



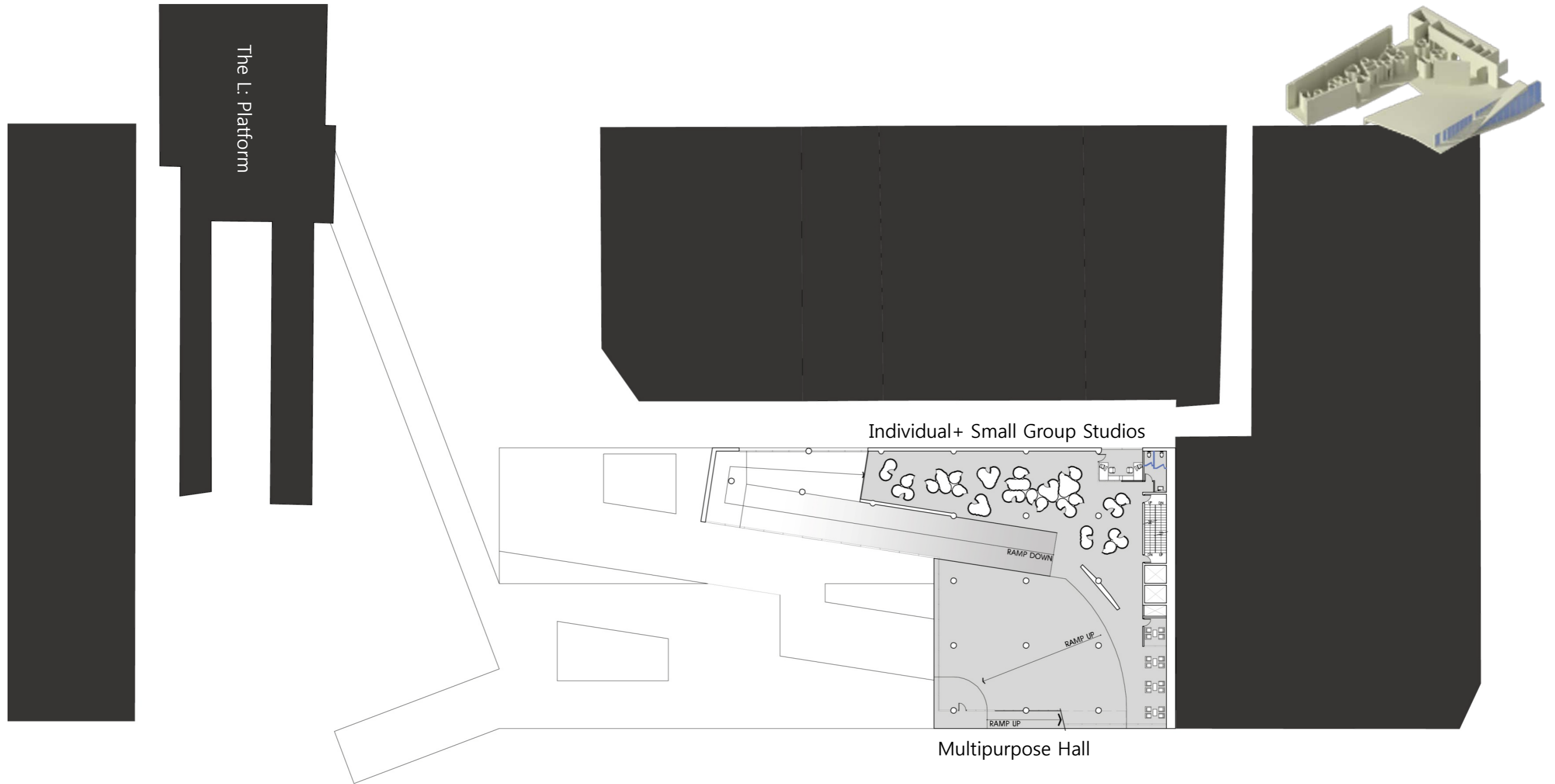
» Plans: Circulations

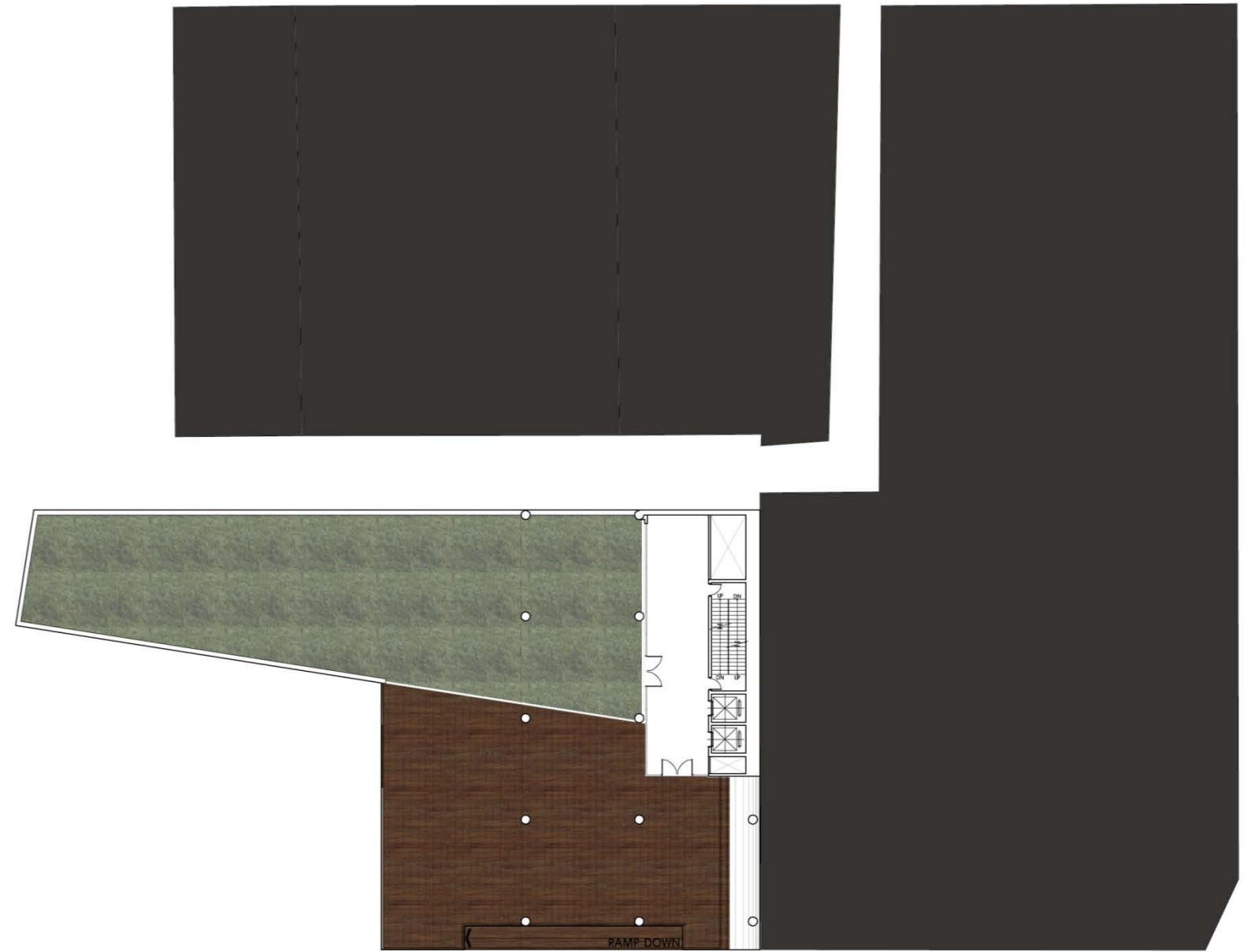




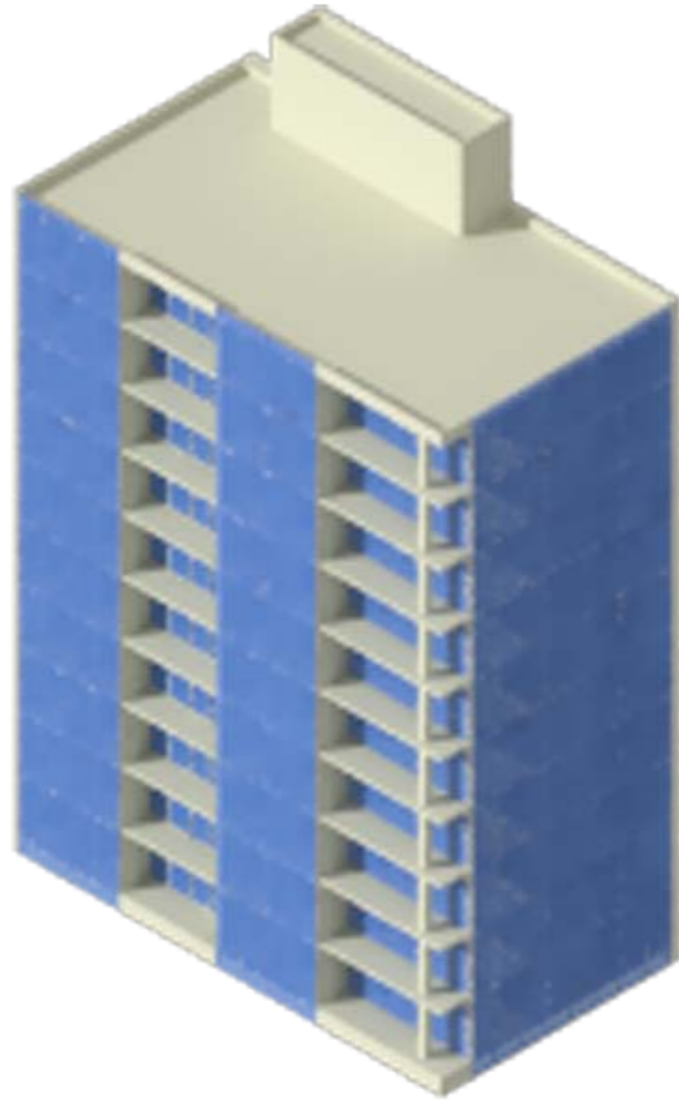


- Virtual Community Hall
- Virtual Activity Rooms
- Cafe

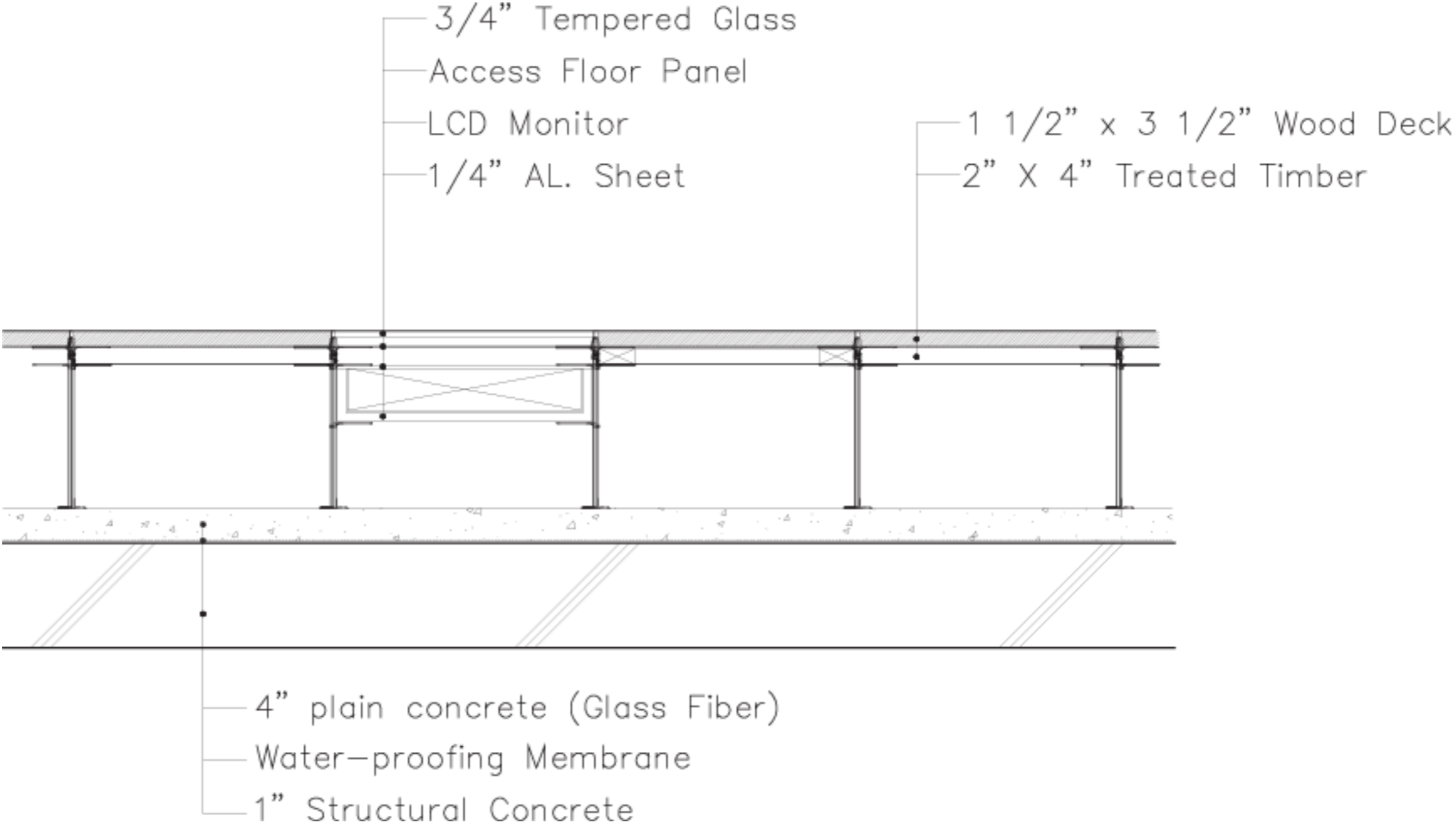




» Plans: 5<sup>th</sup> ~ 10<sup>th</sup> Floor SCALE: 1"/32'



» Plans: Detail of Digital Plaza



 **Appendix**



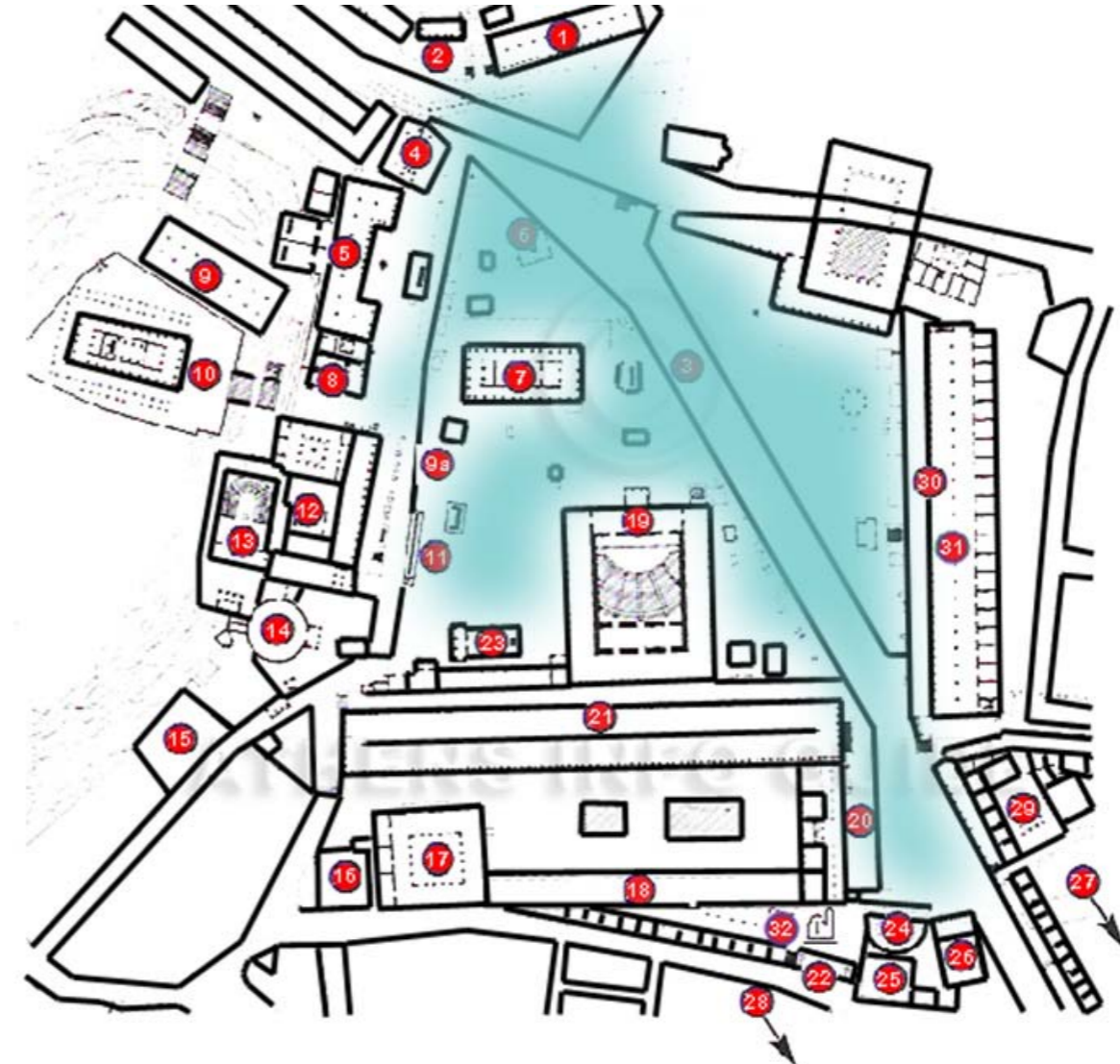
## » The Origin of Community Space

### 1. Athenian Agora

The Agora was an open "place of assembly" in ancient Greek city-states. There were two functions of the Agora. The first function was political, that is citizens would gather in the Agora for military duty or to hear statements of the ruling king or council. The other is commercial. Namely, the Agora served as a marketplace where merchants kept stalls or shops to sell their goods amid colonnades.



1	Painted Stoa	11	Monument of the Eponymous Heroes	22	Enneakrounos (Nine-spouted fountain house)
2	Sanctuary of Aphrodite Ourania	12	Old Bouleuterion and the Metroon	23	South-west Temple
3	Panathinaic Way	13	New Bouleuterion (council house)	24	Nymphaeum
4	Royal Stoa (Basileios Stoa)	14	Tholos	25	Mint
5	Stoa of Zeus Eleutherios	15	Strategeion	26	Southeast Temple
6	Altar of the Twelve Gods	16	South-west fountain house	27	Eleusinion
7	Temple of Ares	17	Heliaia (court house)	28	Private houses
8	Temple of Apollo Patroos	18	South Stoa	29	Library of Pantainos
9	Arsenal	19	Odeion of Agrippa	30	Stoa of Attalos
9a	Statue of Hadrian	20	East building	31	Ancient Agora Museum
10	Temple of Hephaistos (Theseion)	21	Middle Stoa	32	Agii Apostoli Solaki (Holy Apostles Solaki)

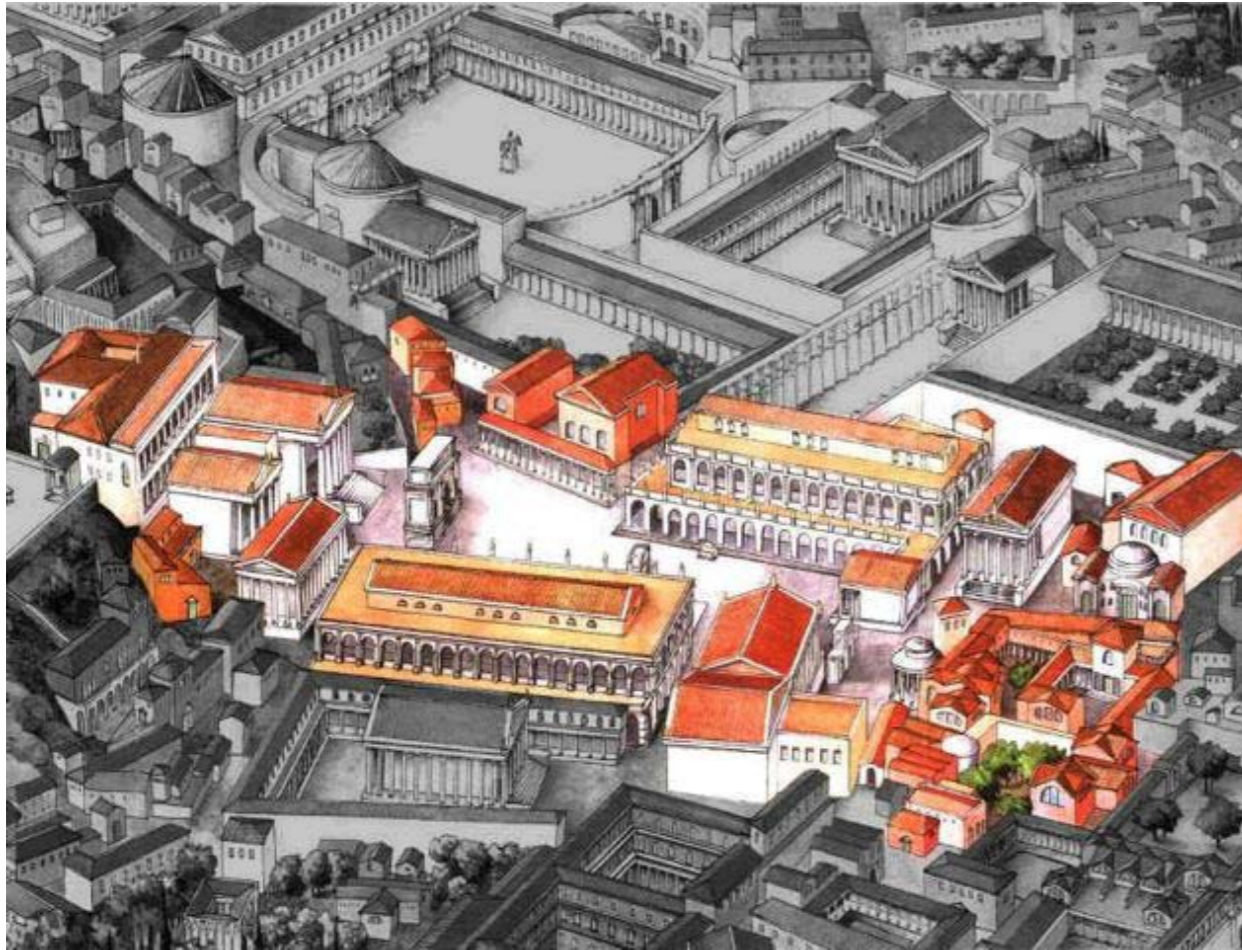


## » The Origin of Community Space

### 2. Roman Forum

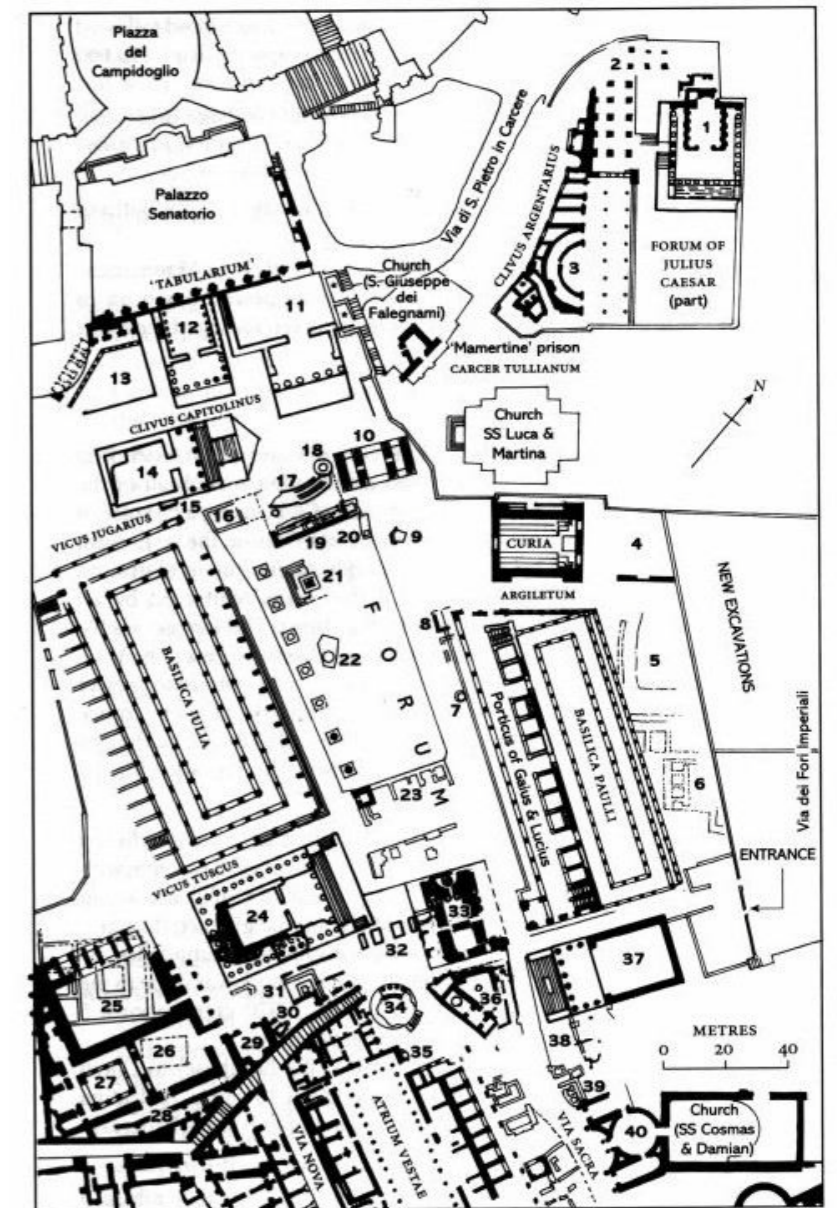
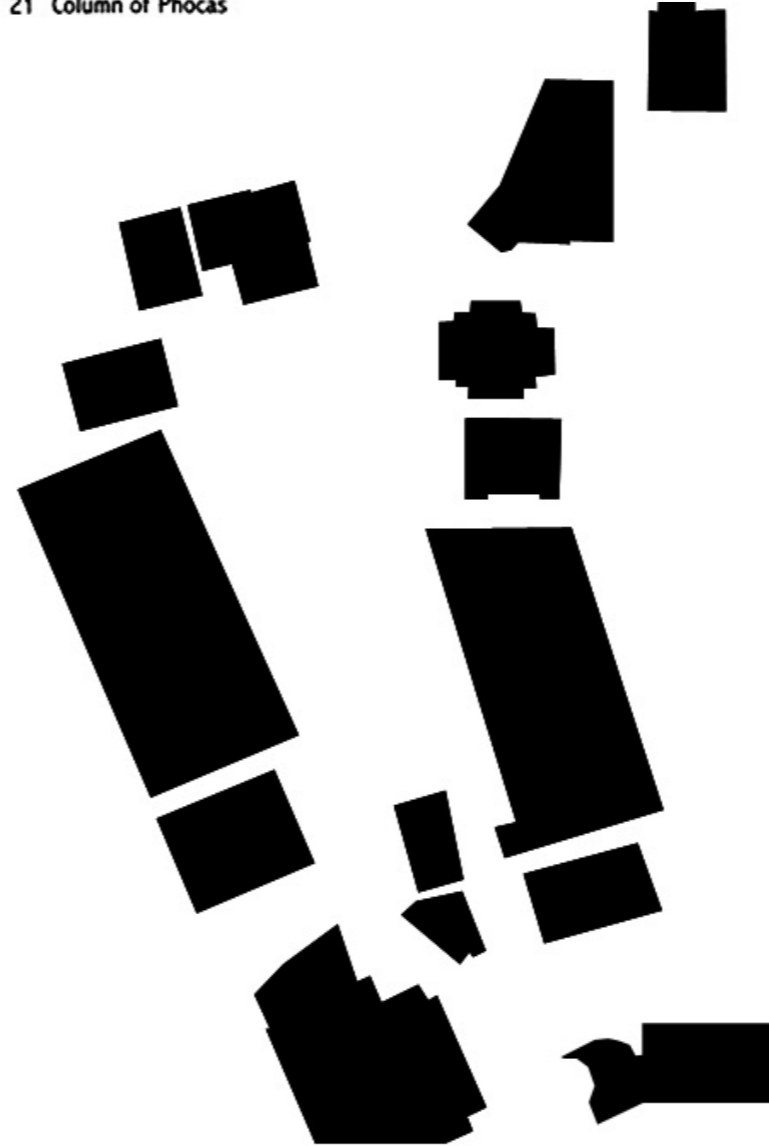
A forum (Latin, "marketplace"; pl. fora) was the public space in the middle of a Roman city. It is part of the centralized area around which the ancient Roman civilization developed.

In addition to its standard function as a marketplace, a forum was a gathering place of great social significance, and often the scene of diverse activities, including political discussions and debates, rendezvous, meetings, et cetera.



#### Key to Fig. 1

- |                                      |  |
|--------------------------------------|--|
| 1 Temple of Venus Genetrix           | 22 Lacus of Curtius                            |
| 2 'Basilica Argentaria'              | 23 Late Imperial Rostra                        |
| 3 Large public latrine               | 24 Temple of Castor                            |
| 4 South corner of Forum of Caesar    | 25 Domitianic Hall/Domus Gai (?)               |
| 5 South end of Forum of Nerva (part) | 26 Forecourt (S. Maria Antiqua)                |
| 6 Part of Temple of Peace            | 27 Atrium (S. Maria Antiqua)                   |
| 7 Shrine of Venus Cloacina           | 28 Covered ramp to Palatine                    |
| 8 Arch of Janus (?)                  | 29 Oratory of the 40 Martyrs                   |
| 9 Black Stone                        | 30 Shrine of Iuturna                           |
| 10 Arch of Septimius Severus         | 31 Lacus Iuturnae                              |
| 11 Temple of Concordia Augusta       | 32 Arch of Augustus                            |
| 12 Temple of Vespasian and Titus     | 33 Temple of Divus Julius                      |
| 13 Precinct of the Harmonious Gods   | 34 Temple of Vesta                             |
| 14 Temple of Saturn                  | 35 Shrine                                      |
| 15 Arch of Tiberius (?)              | 36 Regia                                       |
| 16 Lacus Servilius (?)               | 37 Temple of Divus Antoninus and Diva Faustina |
| 17 Caesarian Rostra                  | 38 Archaic burials                             |
| 18 Umbilicus Urbis                   | 39 Basement of a Late Republican house         |
| 19 Augustan Rostra                   | 40 'Temple of Divus Romulus'                   |
| 20 Decennalia base                   |  |
| 21 Column of Phocas                  |  |



▲ Fig. 1. Roman Forum. General site plan

## » Precedents

### 1. James R. Thompson Center, CHICAGO

#### Design

In any case the building is commanding. From its location on the North Loop, it has earned worldwide attention. Massive in size, the James R. Thompson Center reaches 332 feet (100m) into the air and occupies 1,193,163 square feet (110.000 sq m) of space. The building, originally known as the State of Illinois Center, cost \$89 million to build.

The structure is a low-block design. The glass-enclosed steel structure, with a curving, sloping façade, boasts 17 stories, with 2 additional floors underground. The exposed steel is red and the cladding bright turquoise, making for a colorful sight.

#### Atrium

The most spectacular aspect of the building is its soaring cylindrical atrium which extends through the roof to a skylight. Glass elevator shafts project into the atrium as well, and the view of the gigantic Concourse Level from the 72-foot-diameter (22 meter) open cut out of the lobby can be breathtaking.

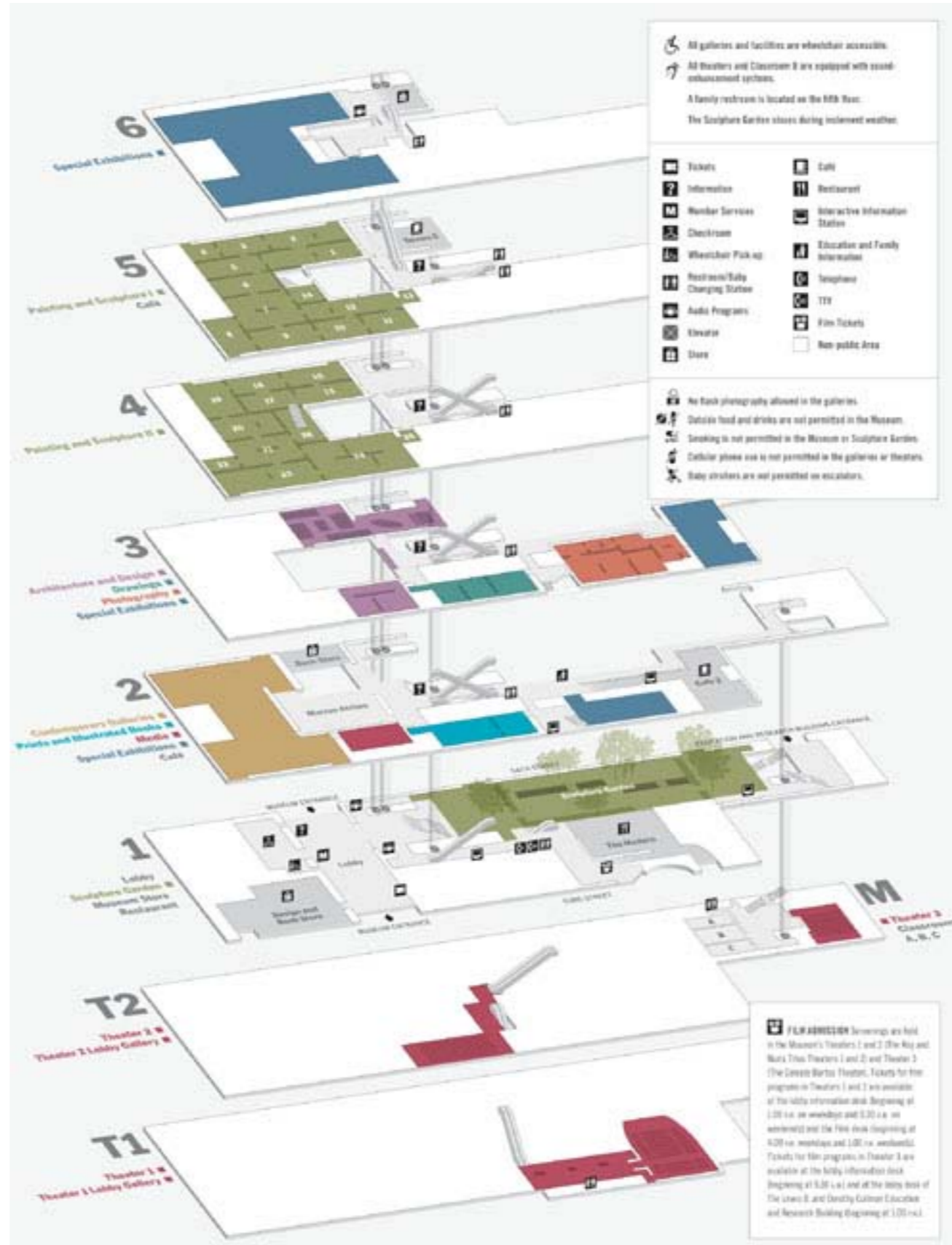
#### Inside

As the principal state government building in Chicago, the James R. Thompson Center houses most of the state government agencies but also includes a large commercial area that features lots of shops and restaurants. Inside, you'll also find what's been dubbed as one of the world's largest collections of contemporary artwork by Chicago natives. More than 600 works of art make their permanent home at the James R. Thompson Center, ranging from photographs to oil paintings to wood sculptures.



## » Precedents

### 2. MOMA, NEW YORK

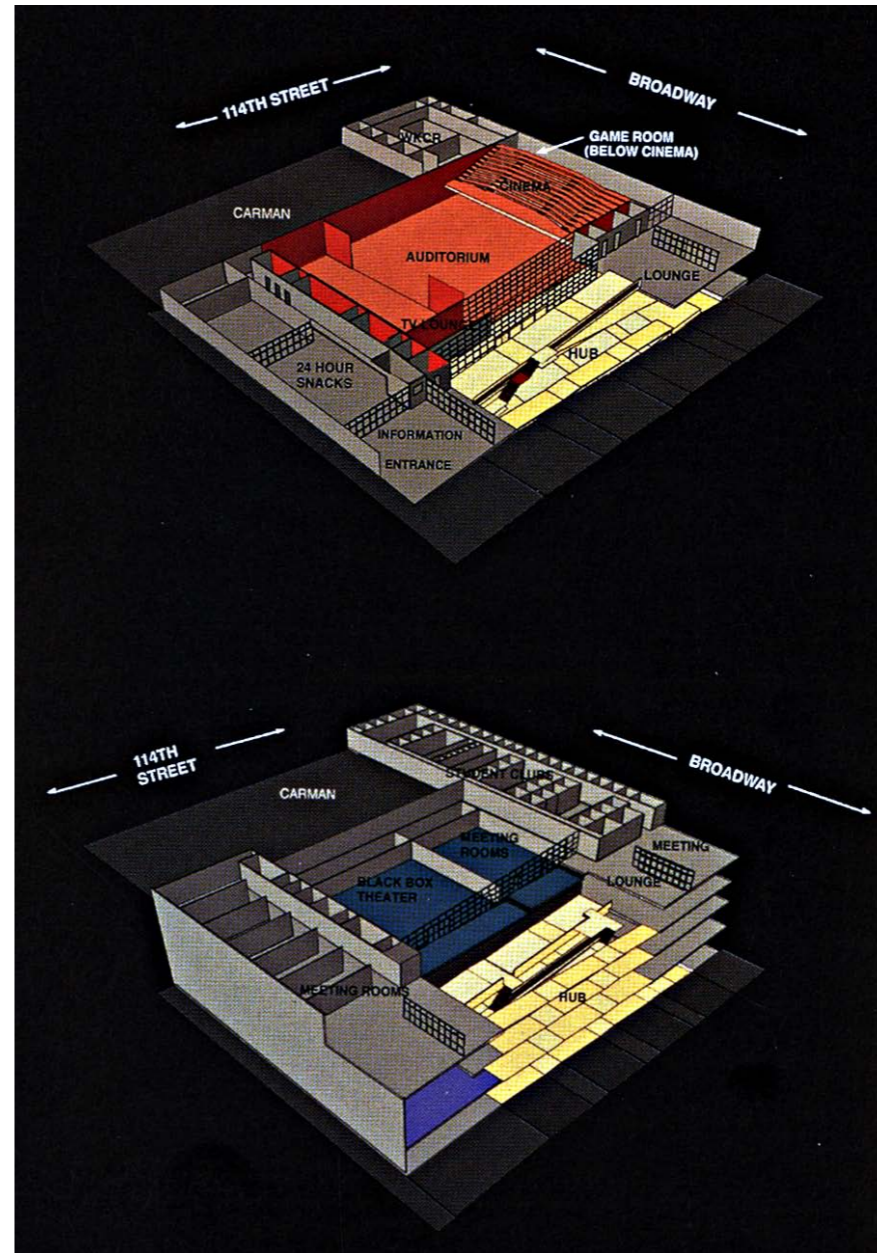
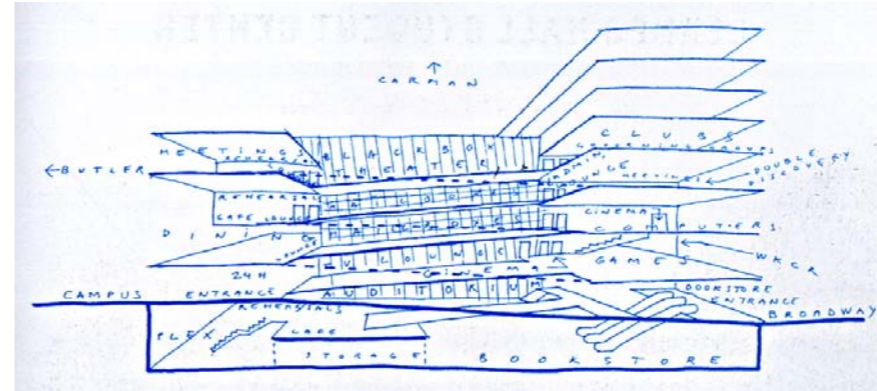
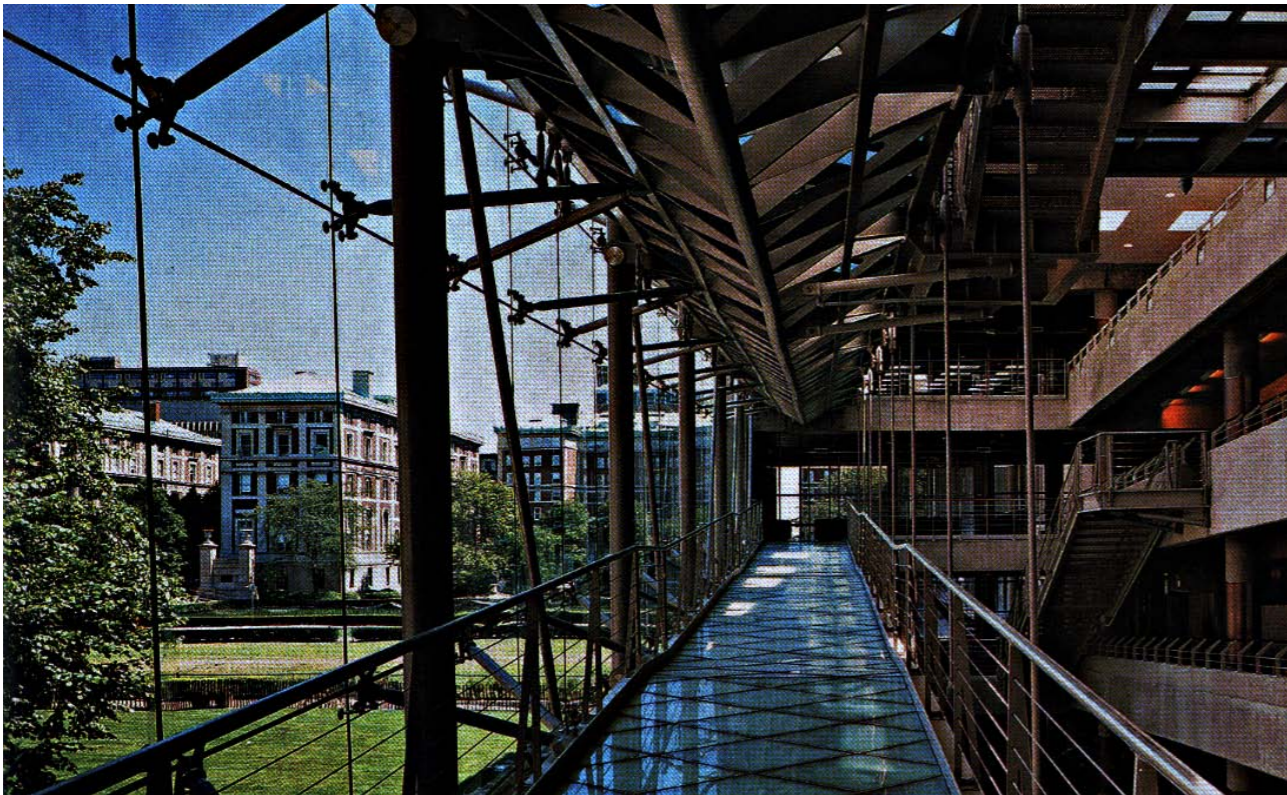


MoMA's library and archives hold over 300,000 books, artist books, and periodicals, as well as individual files on more than 70,000 artists. The archives contain primary source material related to the history of modern and contemporary art.



» Precedents

3. LERNER HALL STUDENT CENTER, NEW YORK



**Rooms**

- Roone Arledge Auditorium
- Roone Arledge Cinema
- Black Box Theater
- Satow Conference Room
- Party Space
- 2 music practice rooms
- 5 conference rooms
- 2 ramp lounges
- 2 multi-purpose rooms

**Dining**

- Cafe 212
- Ferris Booth Commons
- Cafe East

**Facilities**

- Mail Services
- Columbia Bookstore
- Citibank ATM

**Offices**

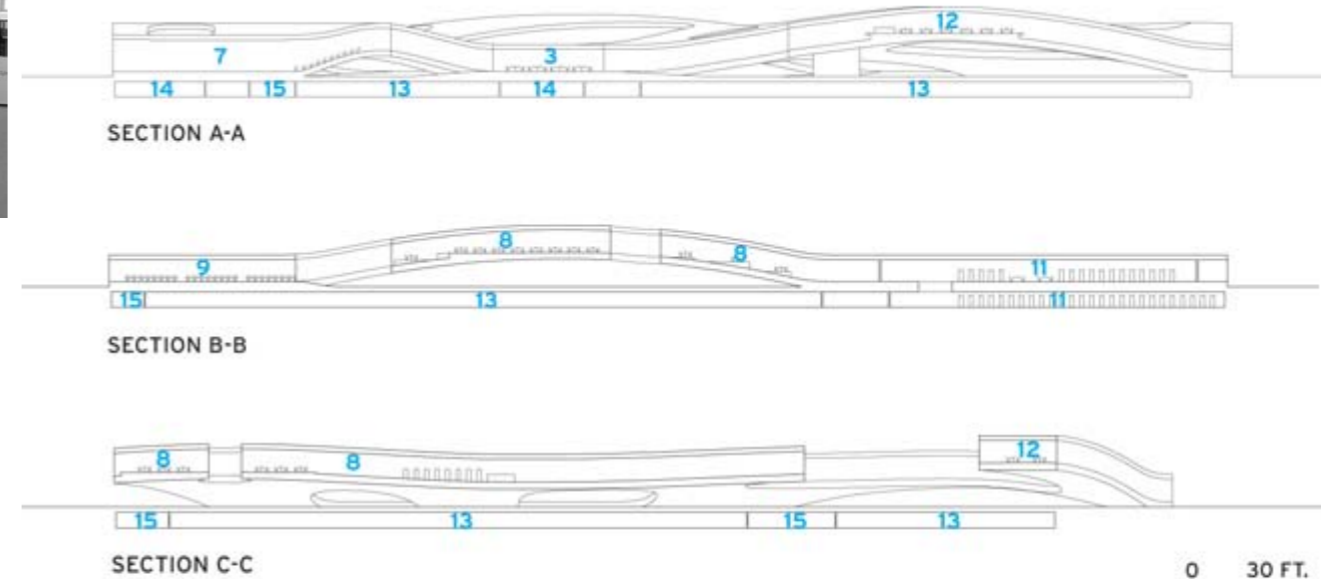
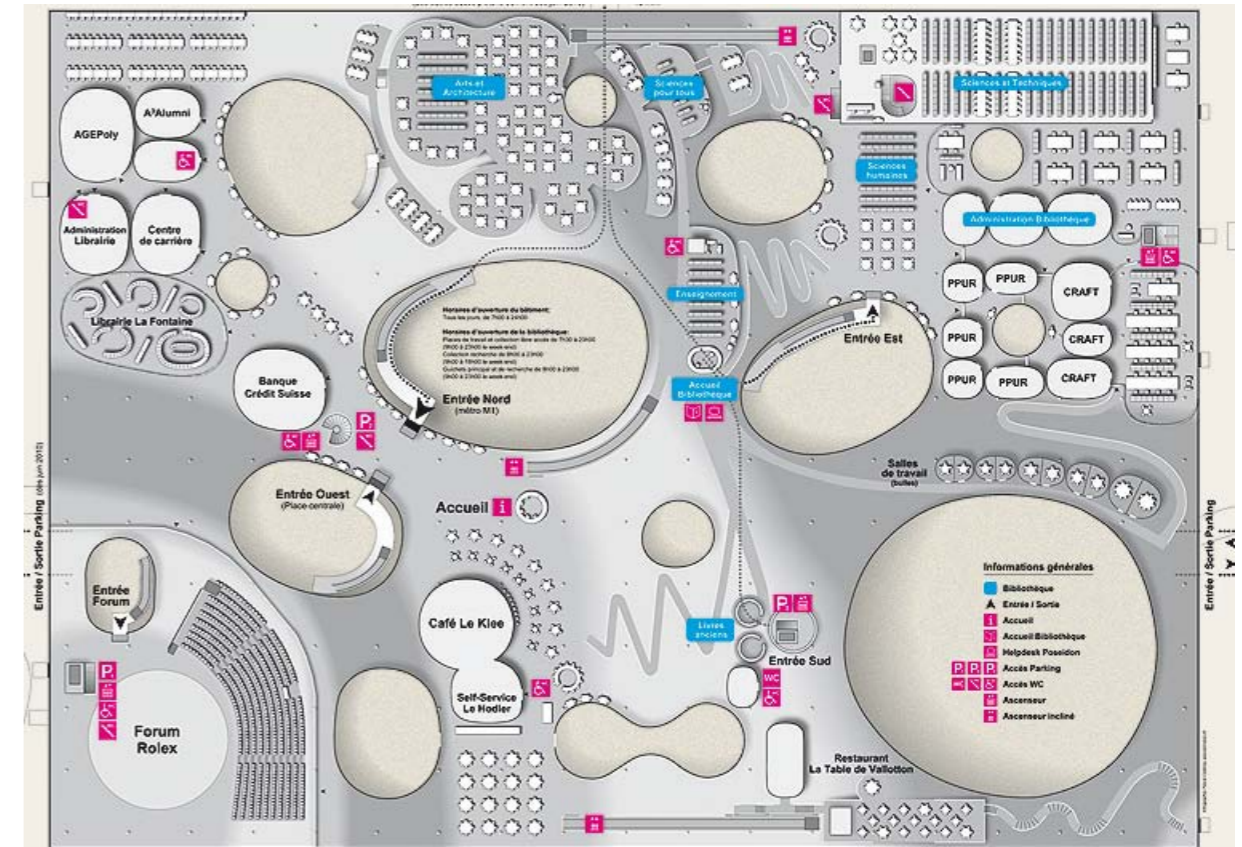
- Health Services offices
- Administrative offices

## » Precedents

### 4. Rolex Learning Centre, Lausanne, Switzerland



The main library, containing 500,000 printed works, is one of the largest scientific collections in Europe; four large study areas can accommodate 860 students with office space for over 100 EPFL and other employees; a state-of-the-art multimedia library will give access to 10,000 online journals and 17,000 e-books, and there are teaching areas including 10 'bubbles' for seminars, group work and other meetings and a Language and Multimedia Center and associated administration offices.



1	Main entrance	6	Offices	11	Research collection
2	Café	7	Multipurpose hall	12	Restaurant
3	Food court	8	Library	13	Parking
4	Bank	9	Work area	14	Storage
5	Bookshop	10	Ancient books collection	15	Mechanical

## » Bibliography

### 1. Books + J

- Canada innovates : sustainable building / Luigi Ferrara and Emily Visser / Published: Toronto : Key Porter Books, c2008.
- Sustainability [electronic resource] : building eco-friendly communities / Maczulak, Anne E. / New York : Facts On File, c2010.
- Content / AMOMA, Rem Koolhaas / Köln : Taschen, 2004
- The dynamic landscape : design, ecology, and management of naturalistic urban planning / Nigel Dunnett, James Hitchmough / London ; Spon Press, 2004.
- Masterpieces of Chicago Architecture / Zukowsky / John Published c2004.
- Thresholds/O.M.A. at MoMA / Rem Koolhaas and the place of public architecture / November 3, 1994 through January 31, 1995
- The people's palace : the story of the Chicago Cultural Center / by Seeger, Nancy Published c1999
- Community design management / by Williamson, Jack Published 1995  
Designing public consensus : the civic theater of community participation for architects, landscape architects, planners, and urban designers / Faga, Barbara Published, c2006
- Architectural graphic standards / the American Institute of Architects ; Andrew Pressman, editor-in-chief ; Smith Maran Architecture and Interiors, graphics editor ; with additional illustrations from the Magnum Group / Hoboken, N.J. : John Wiley & Sons, c2007. Edition: 11th ed.
- Building Types Study Library / Architectural Record / March 2011 / McGraw Hill Construction
- Chicago Zoning Ordinance / Department of Zoning, City of Chicago

### 2. Websites

- [http://en.wikipedia.org/wiki/James\\_R.\\_Thompson\\_Center](http://en.wikipedia.org/wiki/James_R._Thompson_Center)
- <http://www.aviewoncities.com/chicago/jamesrthompsoncenter.htm>
- <http://www.afjmg.org/resources/thompson.jpg>
- [http://www.richard-seaman.com/USA/Cities/Chicago/Landmarks/JamesRThompsonCenter1 .jpg](http://www.richard-seaman.com/USA/Cities/Chicago/Landmarks/JamesRThompsonCenter1.jpg)
- [http://www.earthinpictures.com/world/usa/new\\_york/museum\\_of\\_modern\\_arts\\_\(moma\).jpg](http://www.earthinpictures.com/world/usa/new_york/museum_of_modern_arts_(moma).jpg)
- [http://www.pps.org/graphics/gpp/moma\\_sculpture\\_garden3\\_large](http://www.pps.org/graphics/gpp/moma_sculpture_garden3_large)
- [http://upload.wikimedia.org/wikipedia/commons/9/95/Museum\\_of\\_Modern\\_Art\\_New\\_York\\_2005-04-28.jpg](http://upload.wikimedia.org/wikipedia/commons/9/95/Museum_of_Modern_Art_New_York_2005-04-28.jpg)
- [http://wirednewyork.com/images/museums/moma/moma\\_sculpture\\_garden.jpg](http://wirednewyork.com/images/museums/moma/moma_sculpture_garden.jpg)
- <http://www.thecityreview.com/momaplan.jpg>
- <http://www.archidose.org/Blog/BD04.jpg>
- <http://www.moma.org>
- <http://www.chipublib.org/branch/details/library/harold-washington/p/Index/>
- [http://en.wikipedia.org/wiki/Rolax\\_Learning\\_Center](http://en.wikipedia.org/wiki/Rolax_Learning_Center)