

## CONTEXT & AERIAL VIEWS

# WASHINGTON PARK CENTER FOR IMPROVISATIONAL MUSIC [chicago, il]

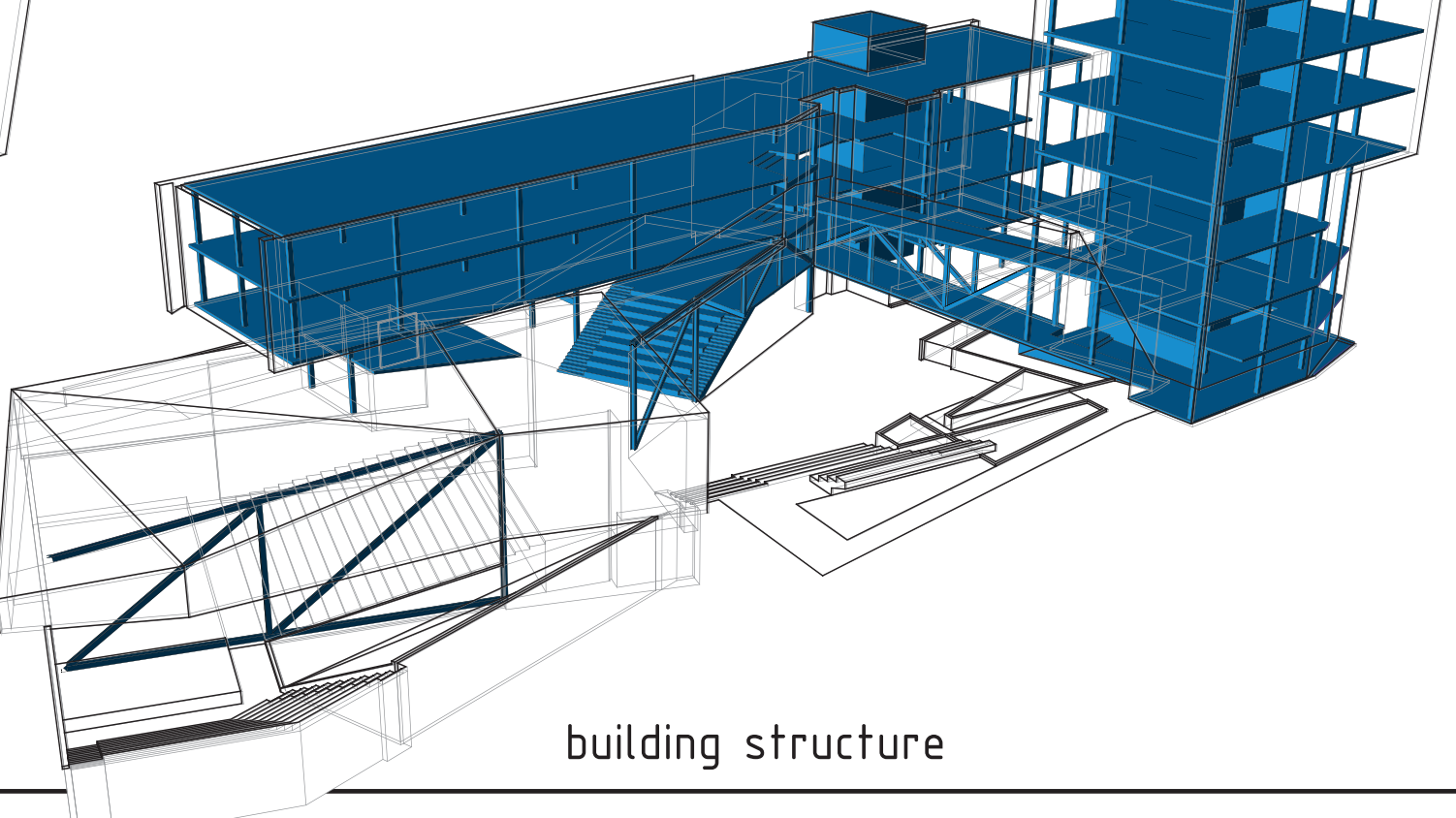
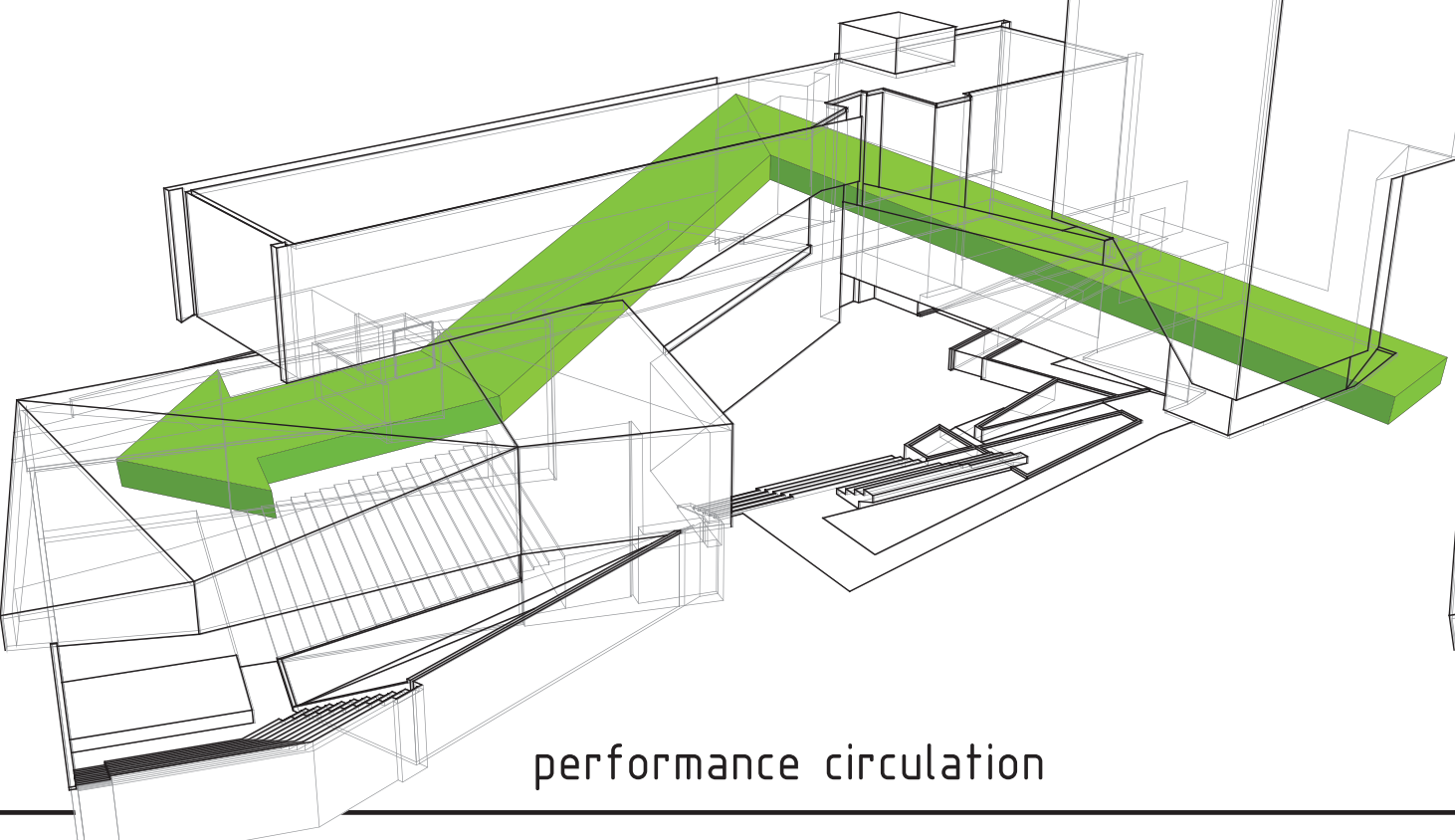
### thesis:

The proposed project is about providing Chicago's economically disadvantaged young musicians access to a distinctly urban facility where they can develop their natural talents, curiosities, and musical voice in an integrated, supportive, and socially relevant environment. We are nearing the point where the necessary connection between musical proficiency and contemporary music is being lost. This is why this center is attempting to focus on the art of improvisation in music, be it through individual solos, composition, hybridization of music "styles," or through other means. Simply put, the project will belong to the neighborhood, community, and the city. It will be affordable. It will have a close relationship with Chicago's widely used "L" mass transit system. And it will attempt to engage the city's youth by giving them the knowledge and tools to create and study music that will be distinctly their own.

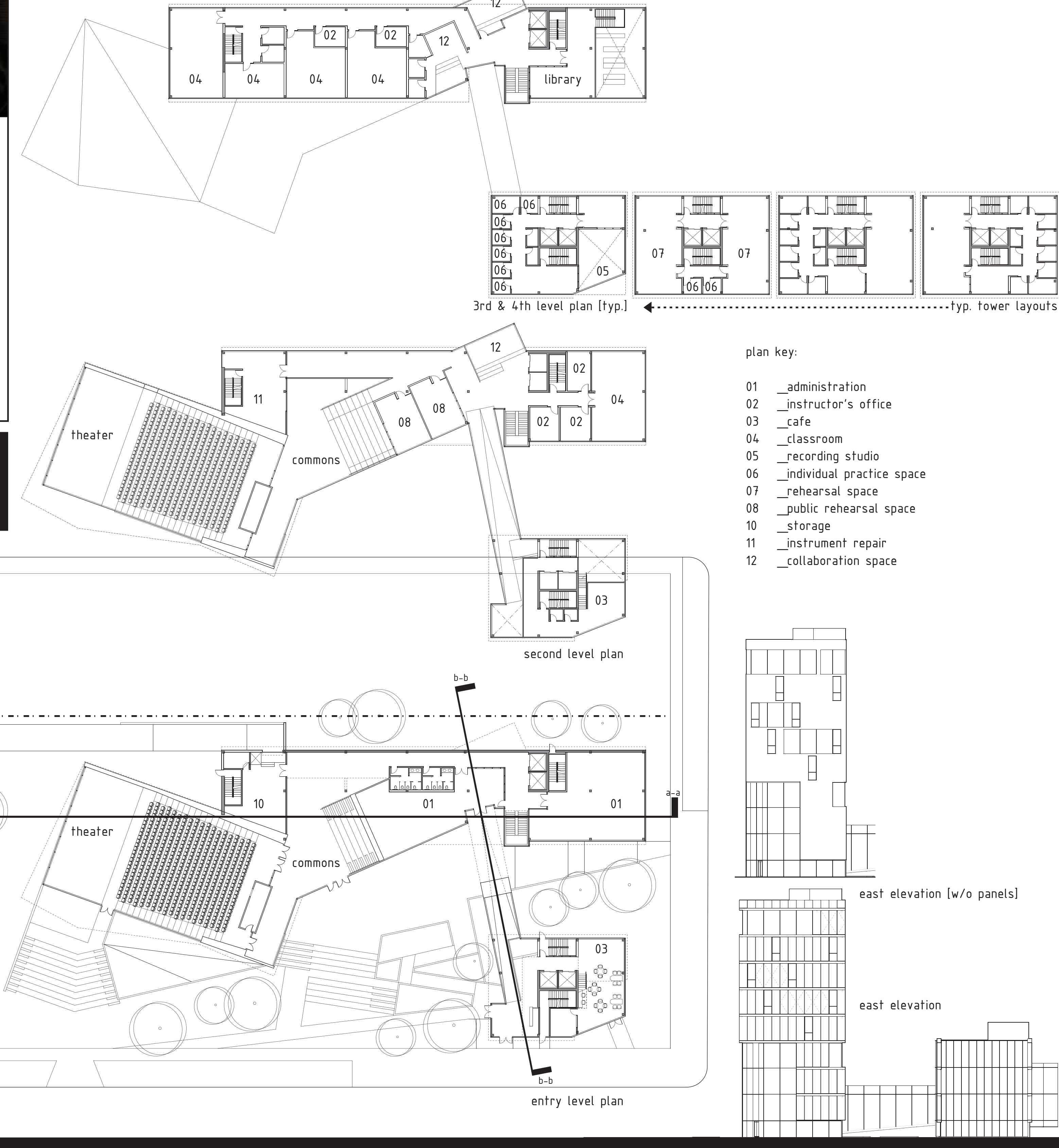
### building concept:

**EDUCATIONAL AND REHEARSAL** program provide the **DATUM** for a **CONNECTING LINK** of informal performance spaces that create opportunities for **SPONTANEOUS COLLABORATIVE IMPROVISATION**.

### site transformation



## BUILDING CONCEPT & DIAGRAMS



## PLANS

SCALE: 1/32"=1'-0"

## ELEVATIONS

SCALE: 1/32"=1'-0"