

# ADAPTATION & REHABILITATION OF SHULZE BAKERY

**WIGDAN AI-GUNEID**  
**MASTER THESIS PROJECT-2011**

## THESIS

**History**  
 SCHULZE BAKERY IS A NATIONAL LANDMARK THAT RESIDES AT THE SOUTH SIDE OF CHICAGO-WASHINGTON PARK NEIGHBORHOOD. WASHINGTON PARK NEIGHBORHOOD IS CONSIDERED ONE OF THE POOREST, LEAST POPULATED, AND HAVE THE HIGHEST RATE OF CRIMES AND HIGH SCHOOL DROPPINGS IN CHICAGO.

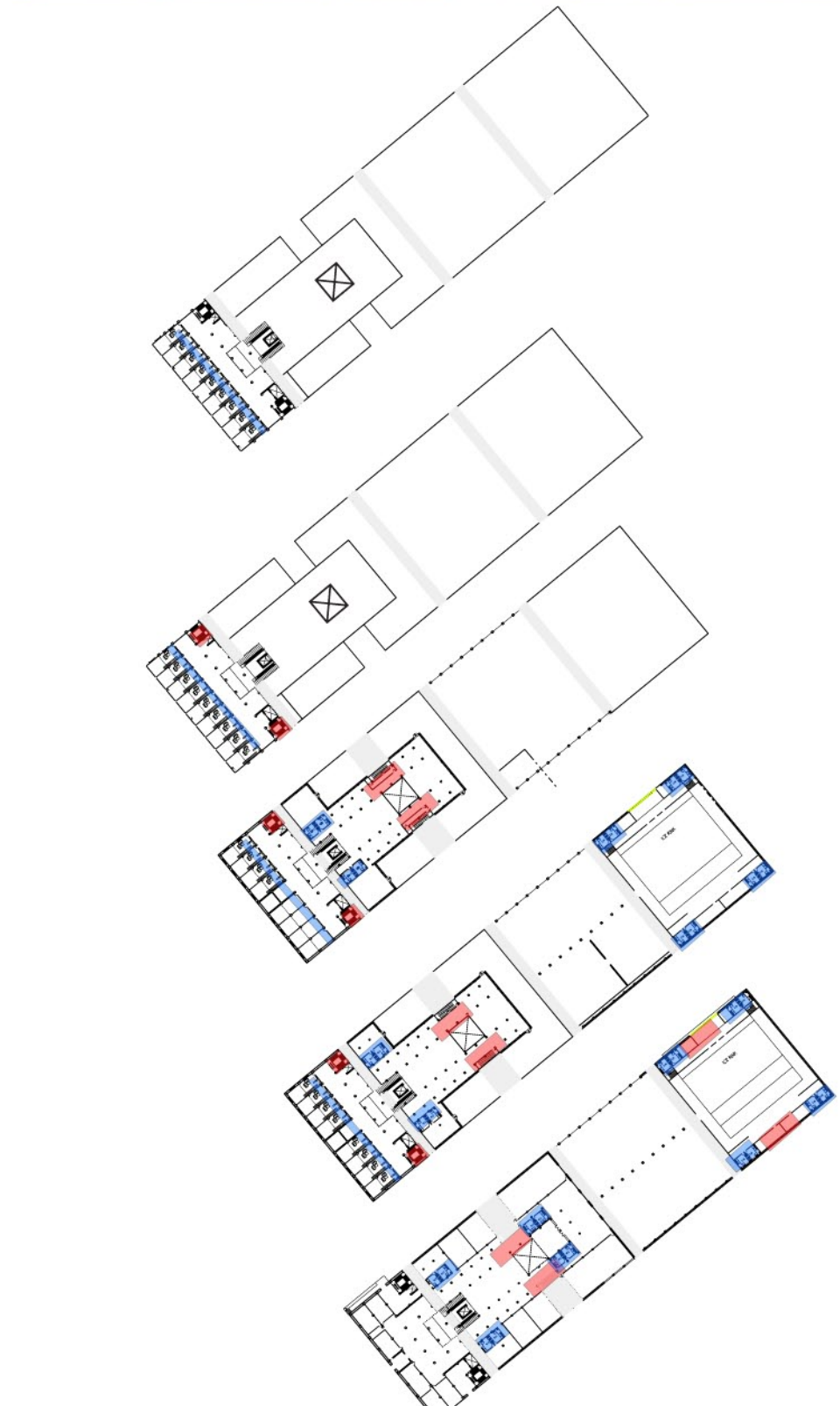
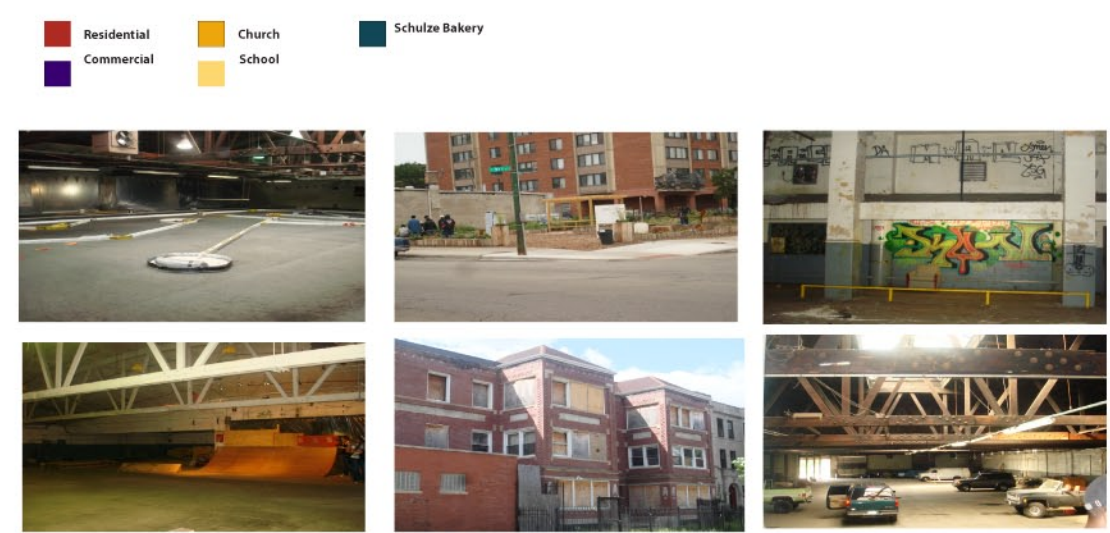
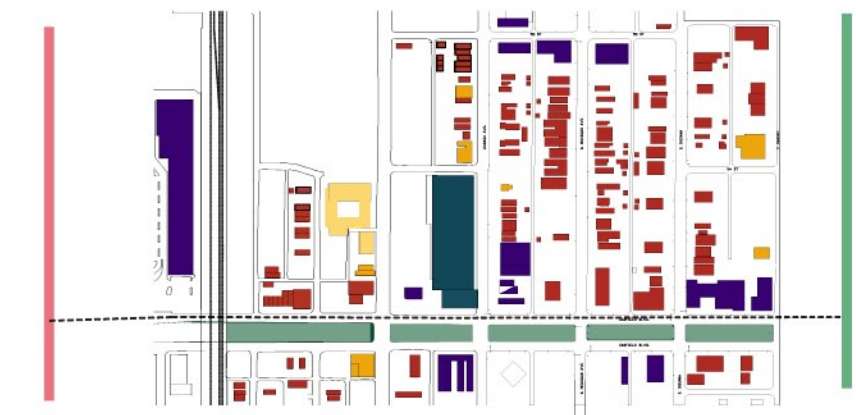
**Context**  
 MY THESIS IS STUDYING THE OPPORTUNITY TO IMPROVE THIS NEIGHBORHOOD BY REHABILITATING SCHULZE BAKERY. TURNING IT INTO A MIXED USE BUILDING. ARTISTS LIVING WORKING SPACES WILL BE THE BEGINNING AND LATER RETAIL AND CULTURAL ACTIVITIES FOLLOWED TO IMPROVE THE COMMUNITIES LIVING ON THOSE AREAS.

**Landscape**  
 STRATEGIES WERE STUDIED TO IMPROVE THE RELATION OF THE BUILDING WITH ITS SURROUNDINGS BY CREATING THREE URBAN PATHWAYS THROUGH THE BUILDING INCREASING THE CONNECTION AND ENHANCING THE INDOOR QUALITY OF THE BUILDING. LANDSCAPE BECAME A VITAL PART OF IMPROVEMENTS STRATEGY. IT INVOLVES PROGRAMS THAT COVER NEIGHBORHOOD'S NEEDS FOR RECREATIONAL AREA, KIDS PLAYGROUND, URBAN FARM AND FARM MARKET.

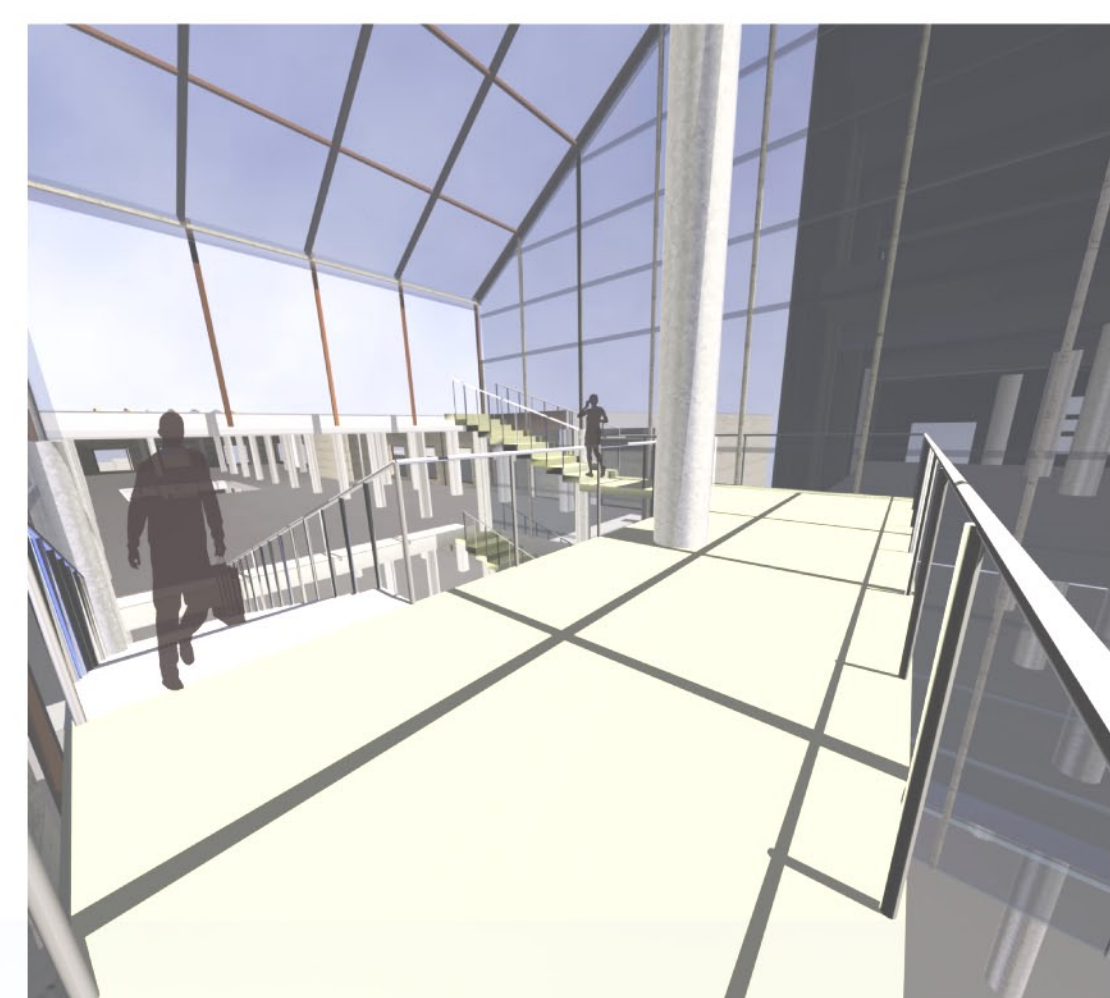
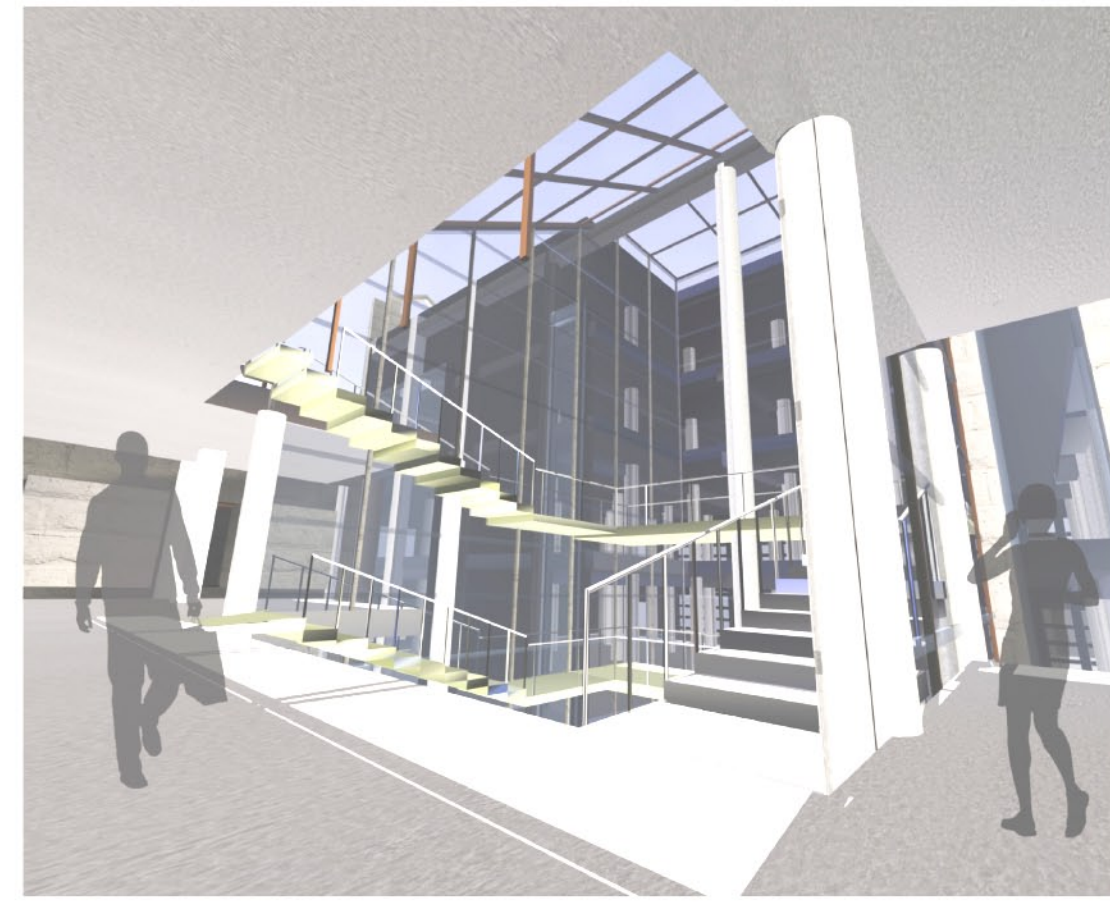
**Adaptation**  
 PASS THROUGH THE BUILDING MORE AIR AND LIGHT INTO THE BUILDING. RENOVATION ALSO TOOK PLACE BY RELOCATING CIRCULATION, EGRESS EXITS AND WATER CLOSETS TO IMPROVE THE FLEXIBILITY OF THE BUILDING LAYOUT AND ENABLE IT TO ADAPT TO VARIOUS ACTIVITIES PROGRAMS.

**Passive Strategies**  
 USE OF DOUBLE GLAZED WINDOWS, GREEN ROOFS, SOLAR PANELS, GEOTHERMAL HEATING/COOLING AND WATER RECYCLING SYSTEMS TO MINIMIZE ENERGY CONSUMING.

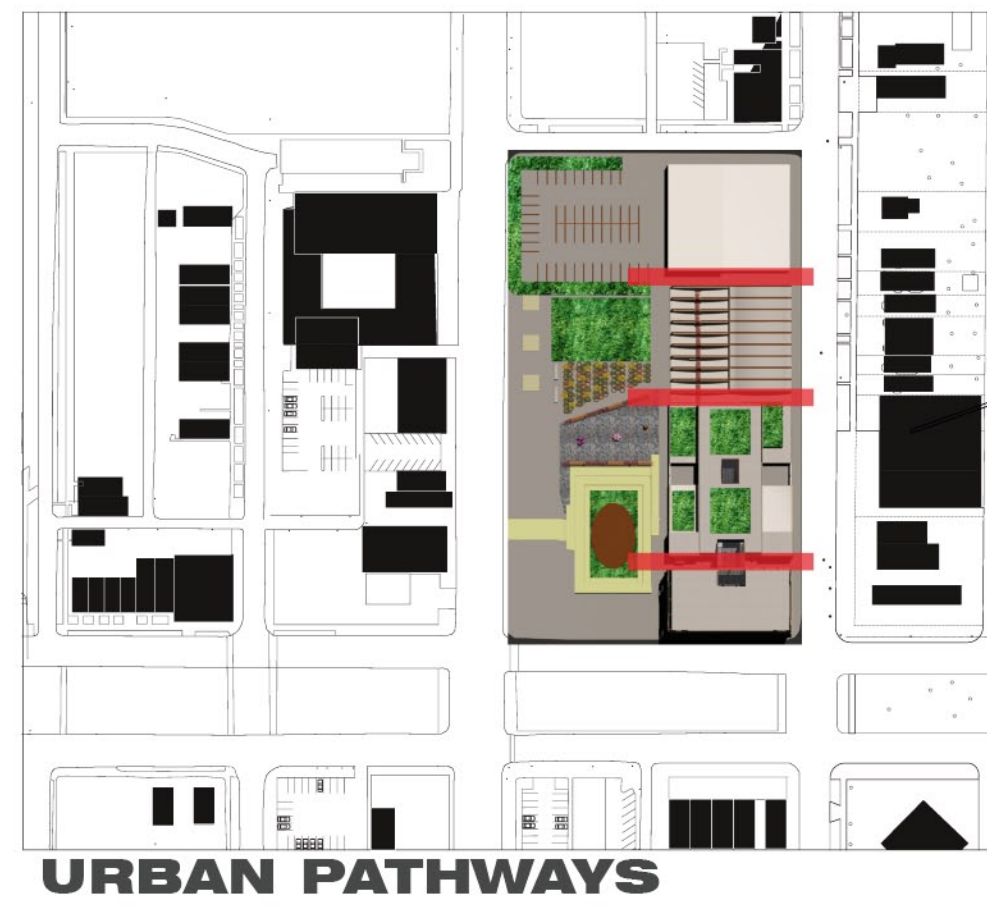
## CURRENT



## INTERIOR 3D



## LANDSCAPE



URBAN PATHWAYS

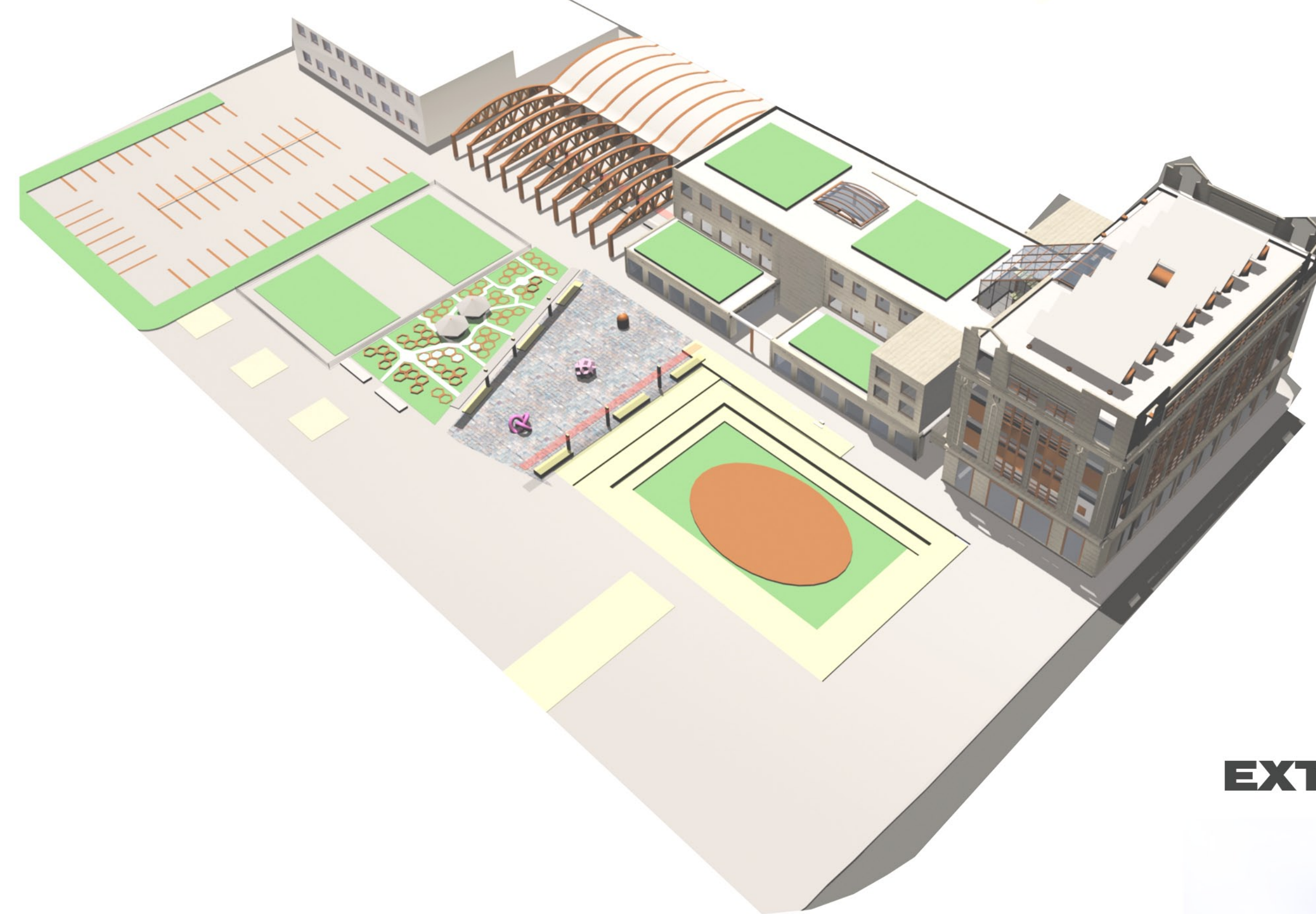
INDOOR/OUTDOOR WAREHOUSE

PLAZA

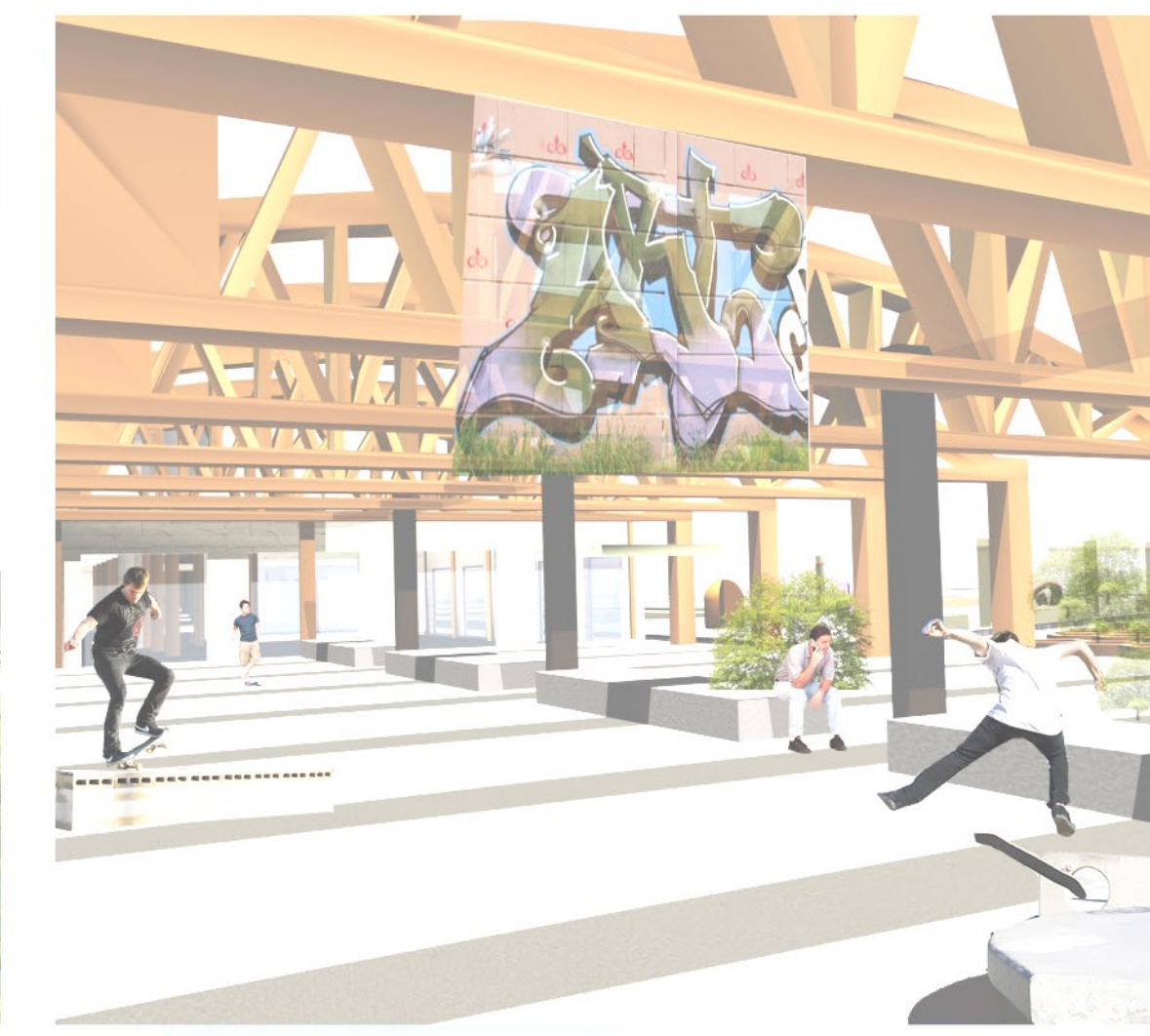
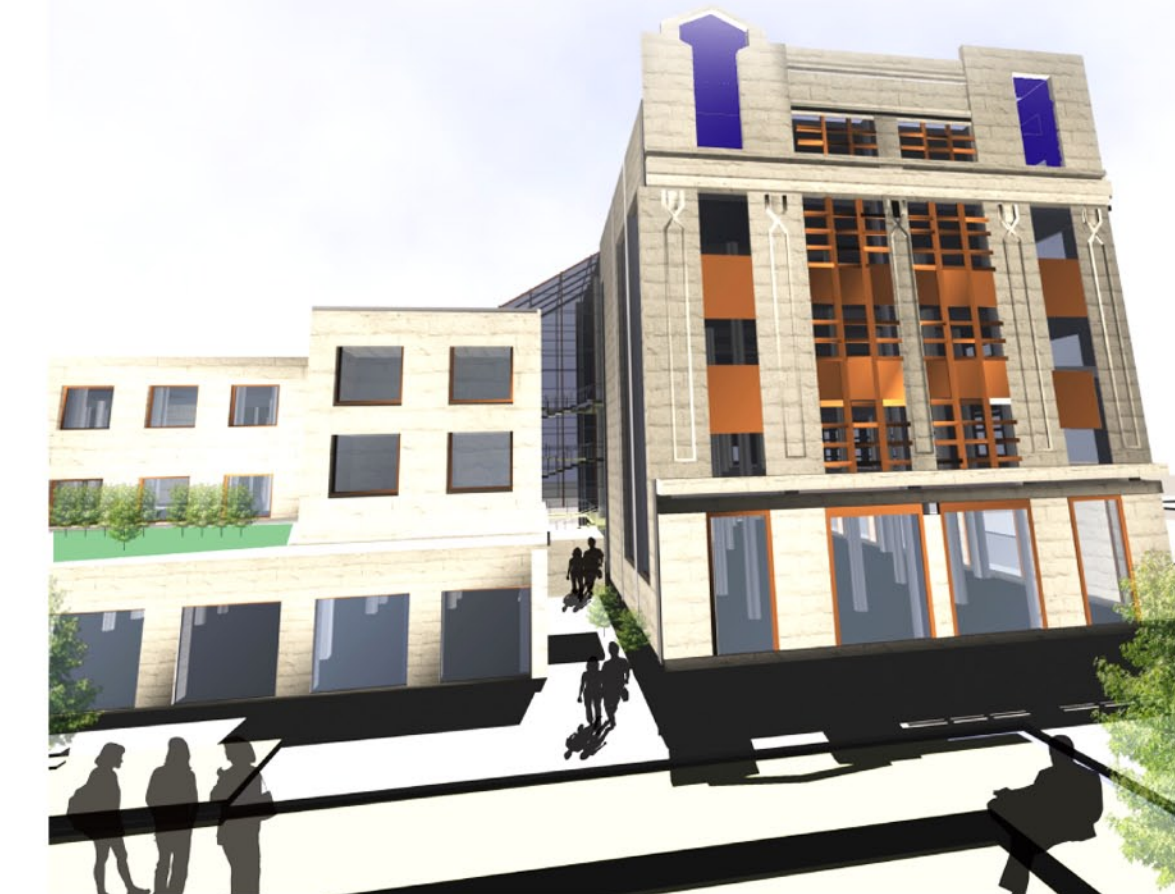
URBAN FARM & FARMER MARKET

PLAY GROUNDS

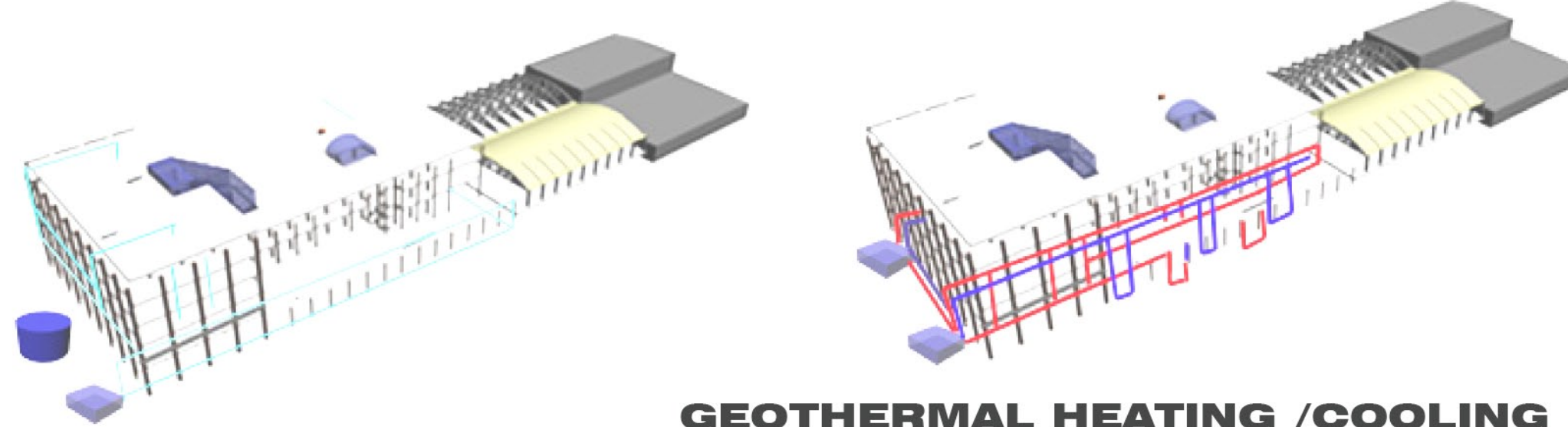
SKIING, ARTIST DISPLAY MULTIPURPOSE



## EXTERIOR 3D



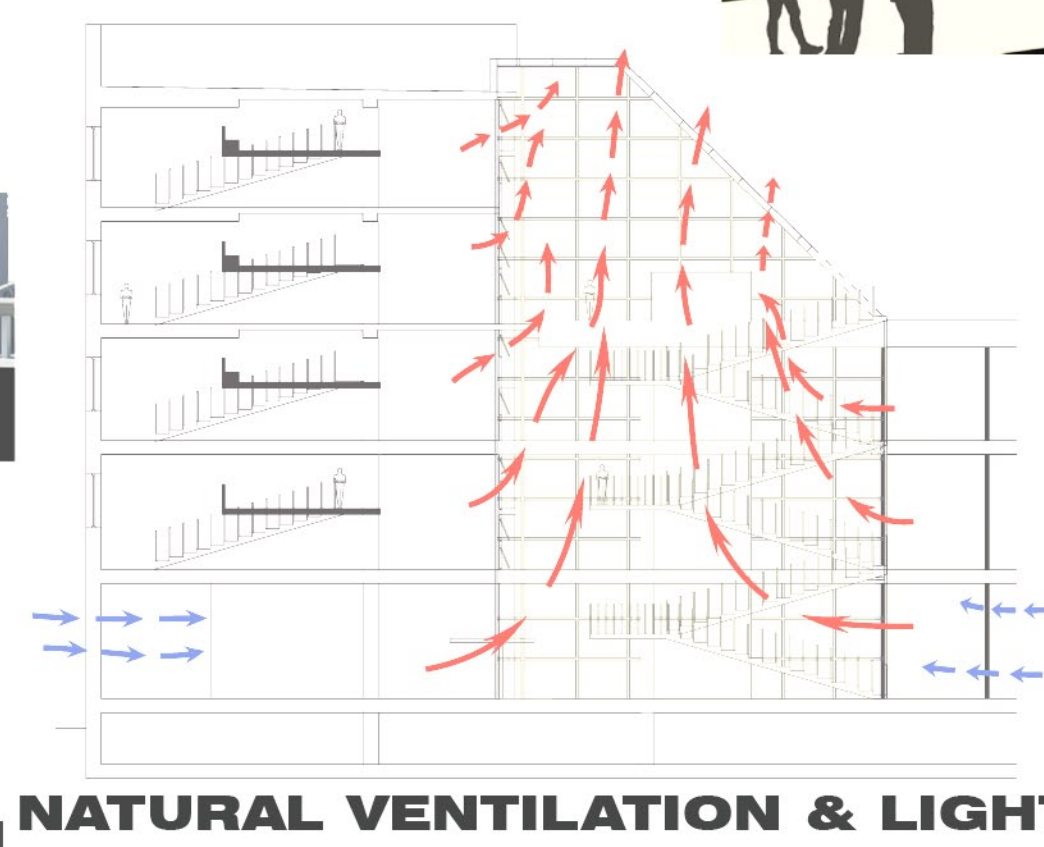
## PASSIVE STRATEGY



## WATER HARVESTING PROGRAMMING



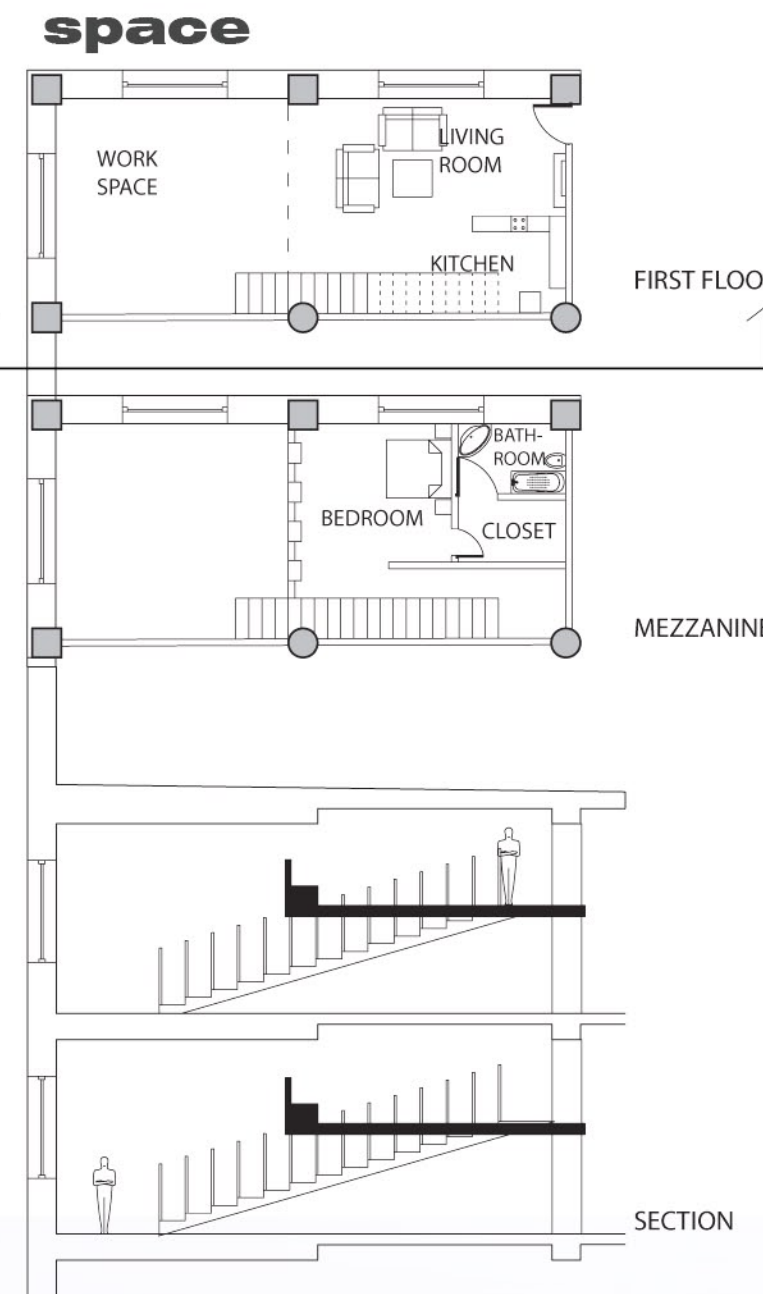
## GEOTHERMAL HEATING / COOLING



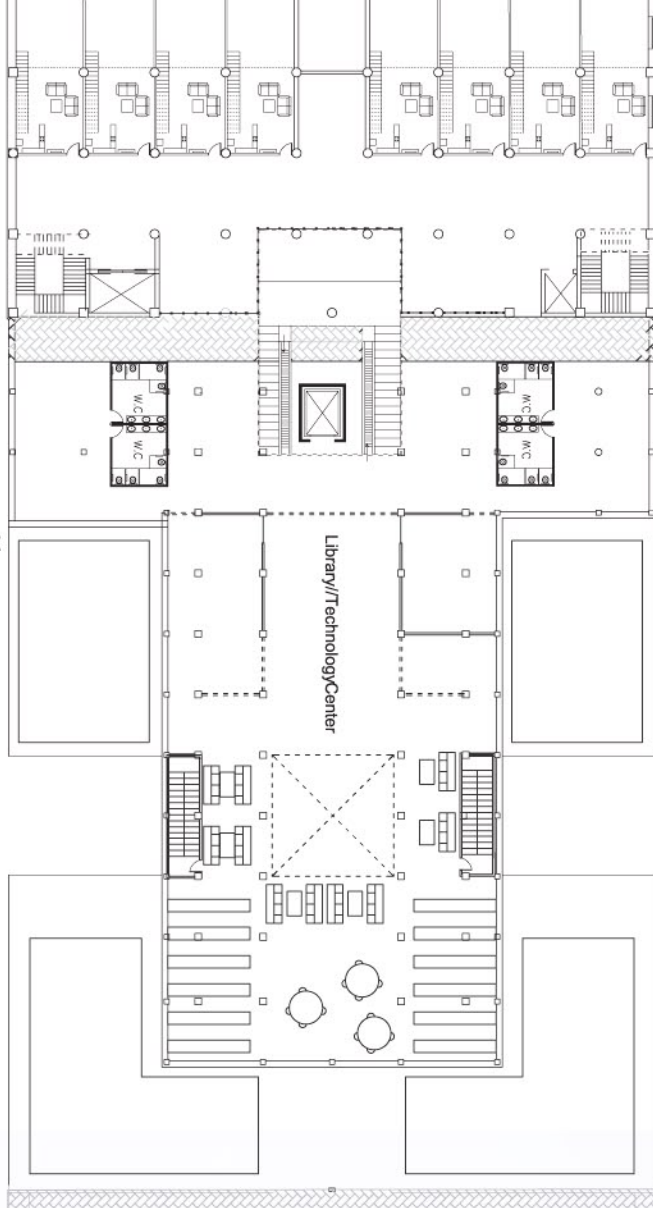
NATURAL VENTILATION & LIGHT

## PLANS PROTOTYPES

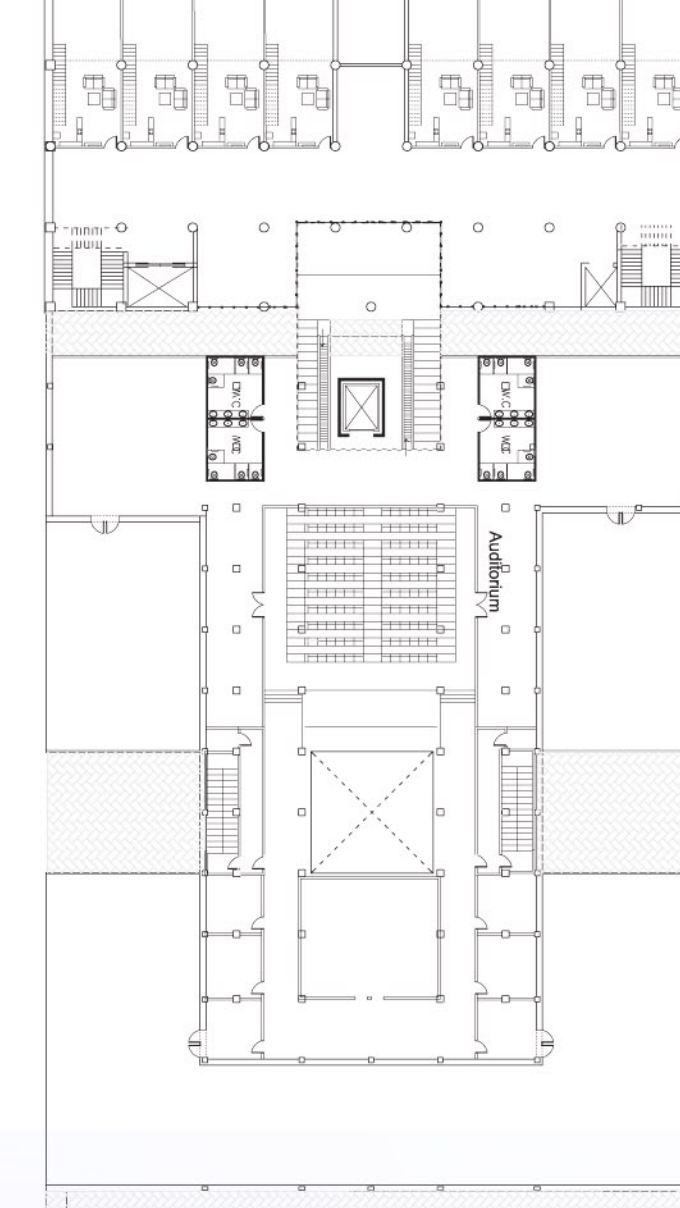
Artist's work/live space



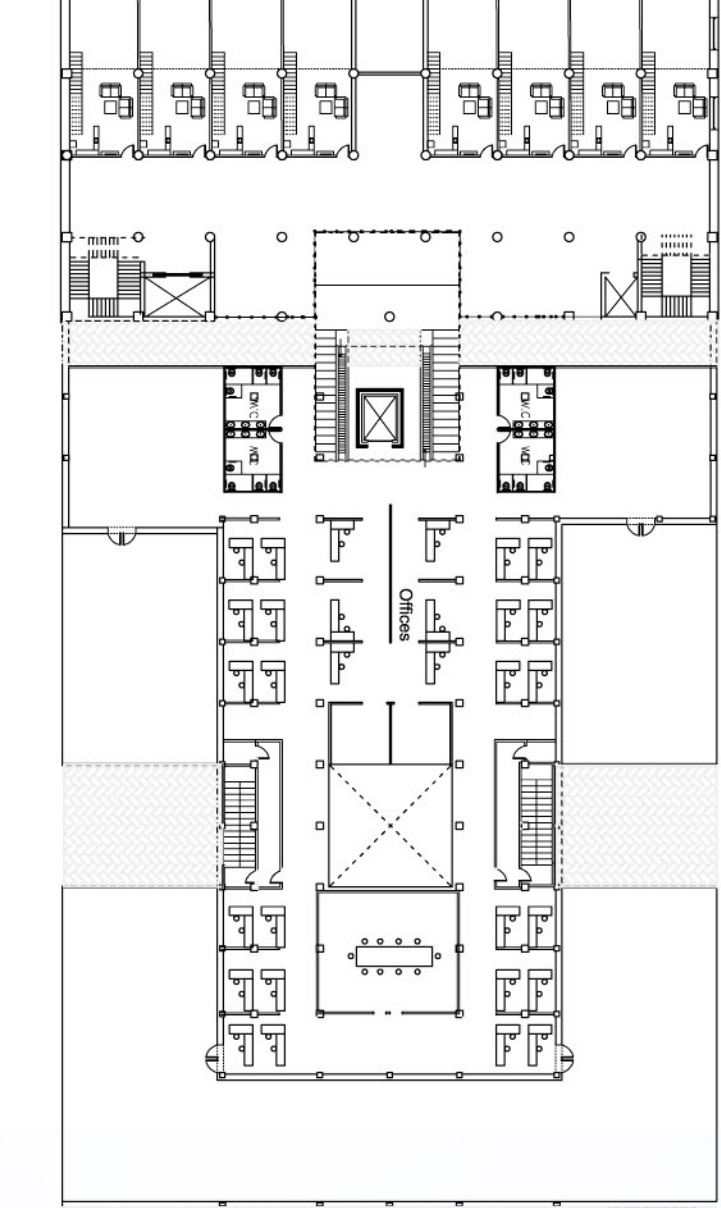
LIBRARY



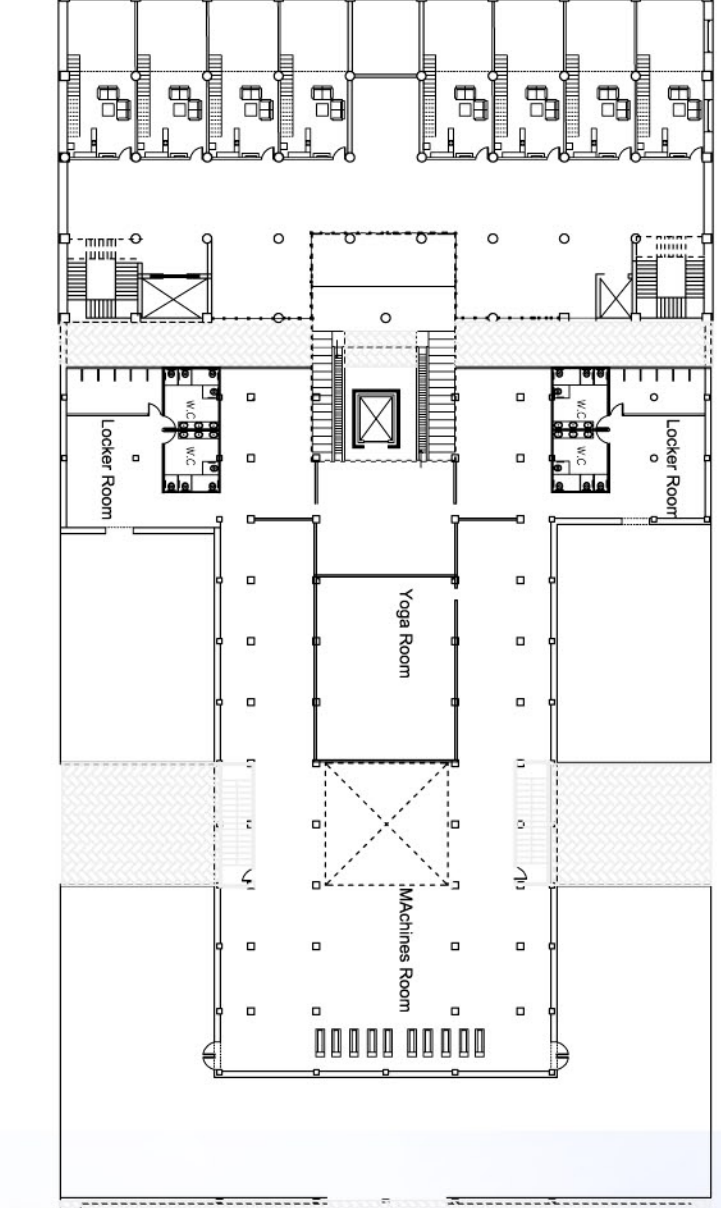
AUDITORIUM



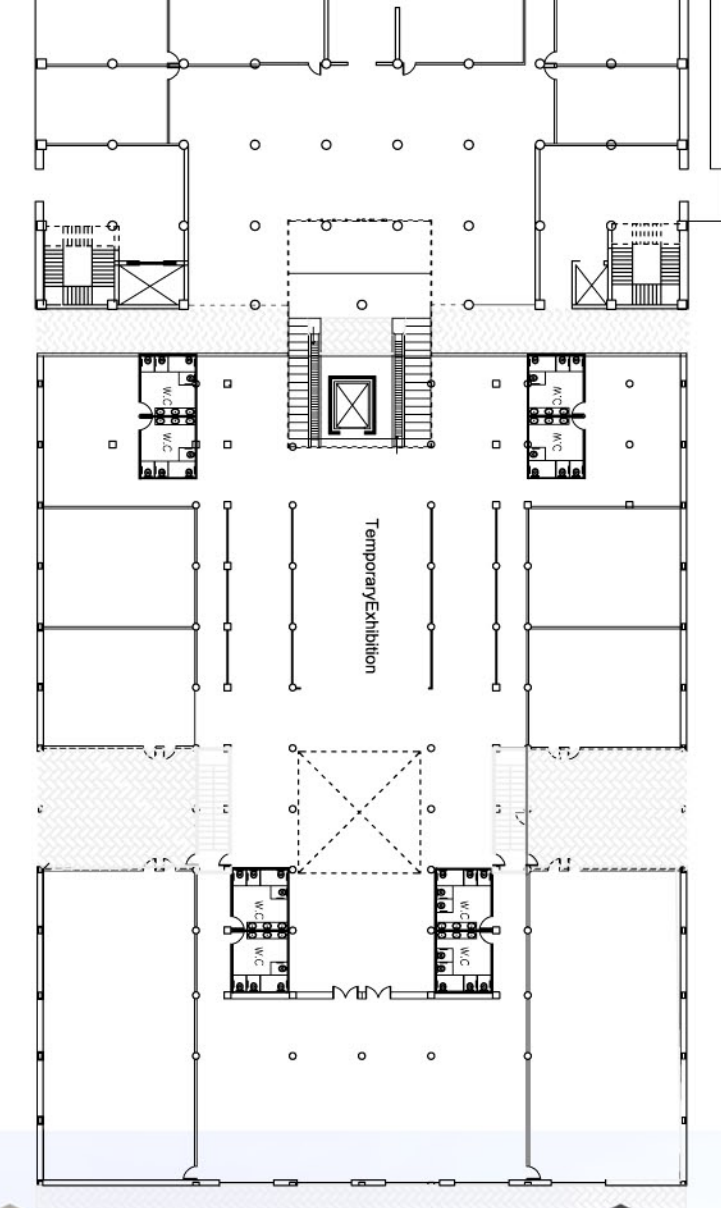
OFFICES



GYM



GALLERY



## PHASING & FINANCING

