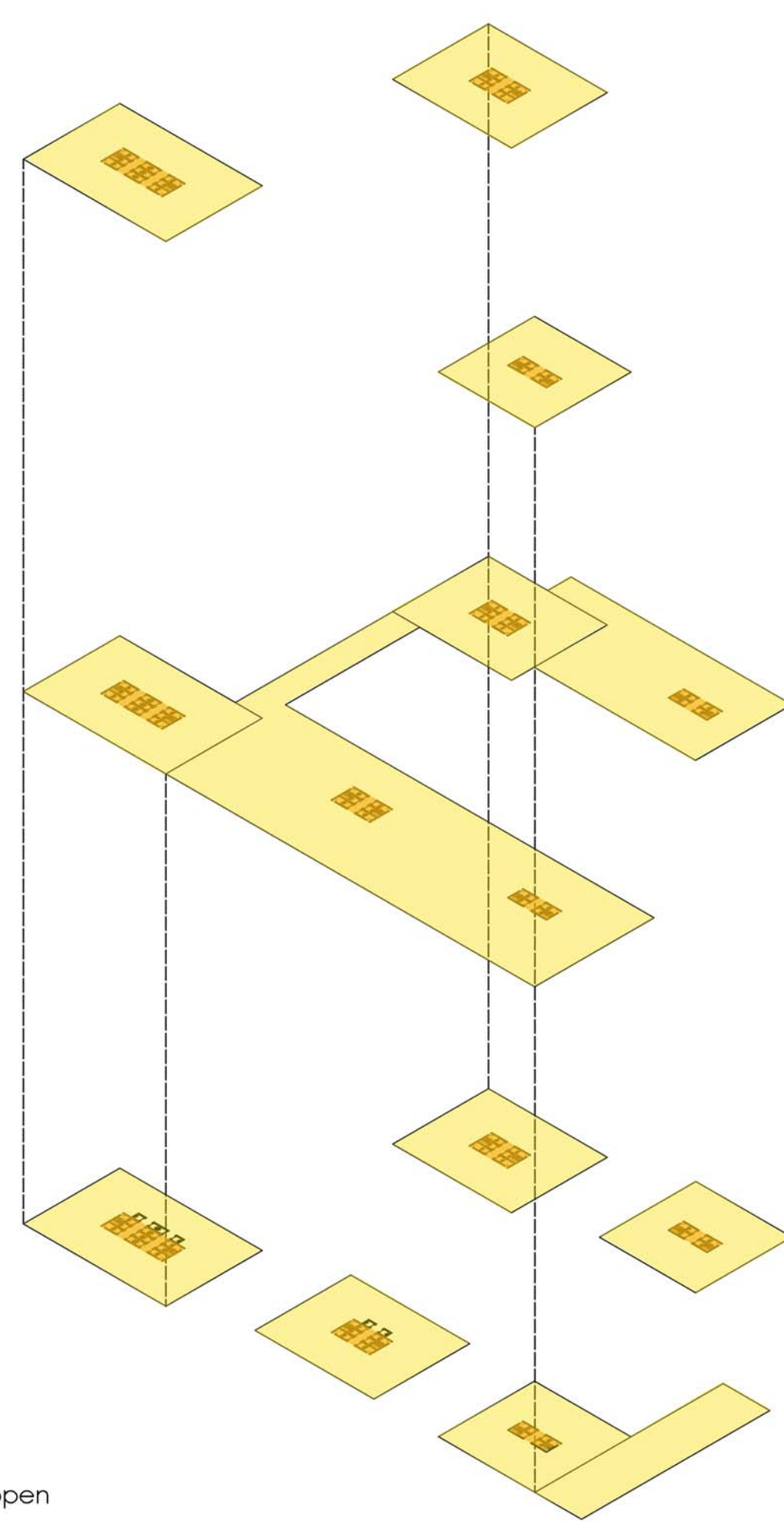


Design Determinants:

- Create business incubator**
By creating variety of transformable spaces which create, promote and accommodate growth
- Linkage of green**
By accommodating human creation without destroying natural environment
- Flexibility in planning to create multiplicity of spaces**
By designing different modules those can be changed after several years.
- Connection with the business district**
By connecting two different nodes of the site
- Energize the Central Space**
By developing contextual void which encourage places to pause and stop which allow interaction to happen in corporate culture.
- Create cohesive environment**
By finding some way to design flexible infrastructure so when the other part of the project is design by someone else, it still feel as a comprehensive, cohesive and unified environment.



Flexibility in floor plans



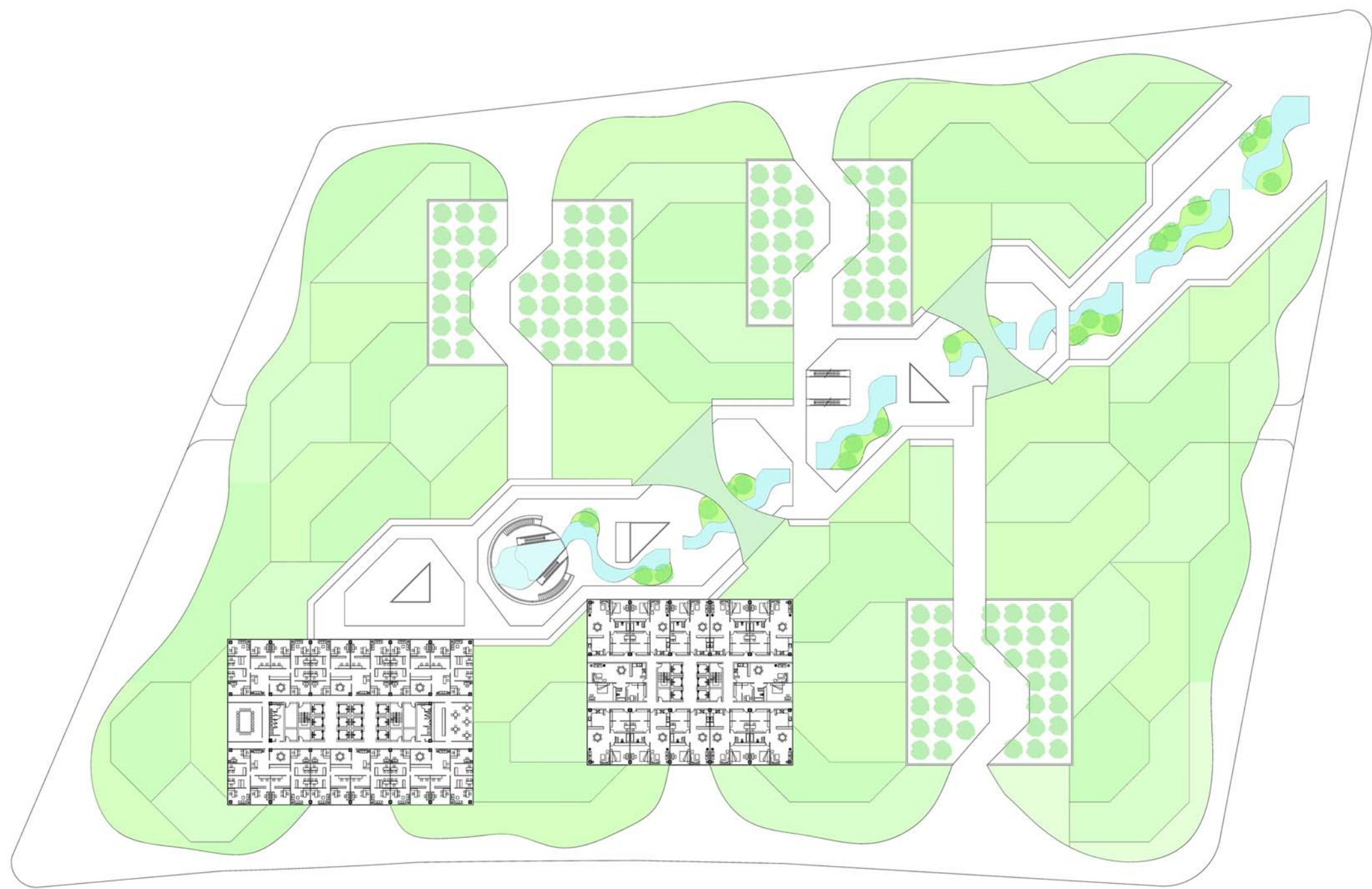
Financial Incubators, India

Master Project Presentation

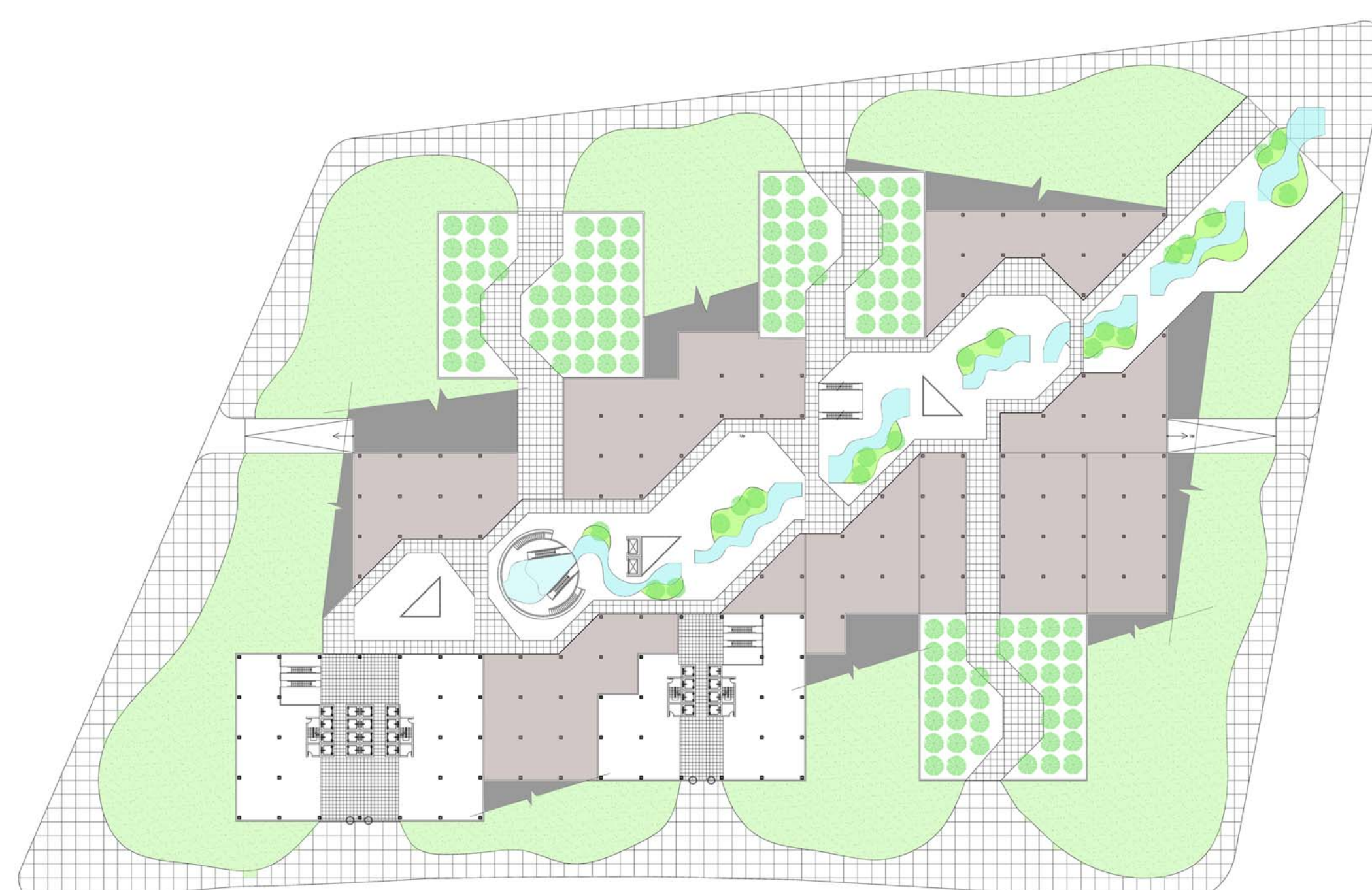
Spring '10

Instructor: John Durbrow

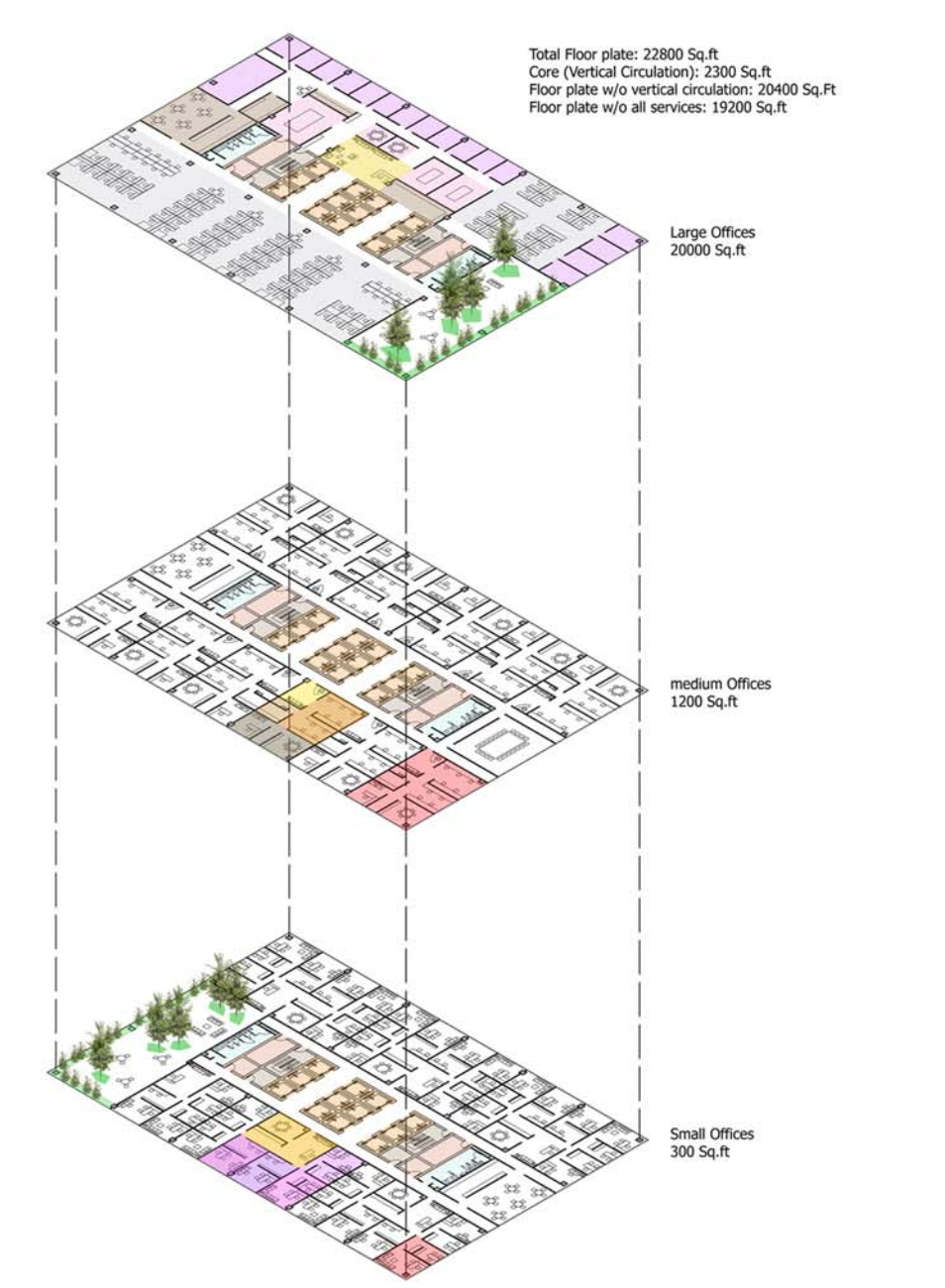
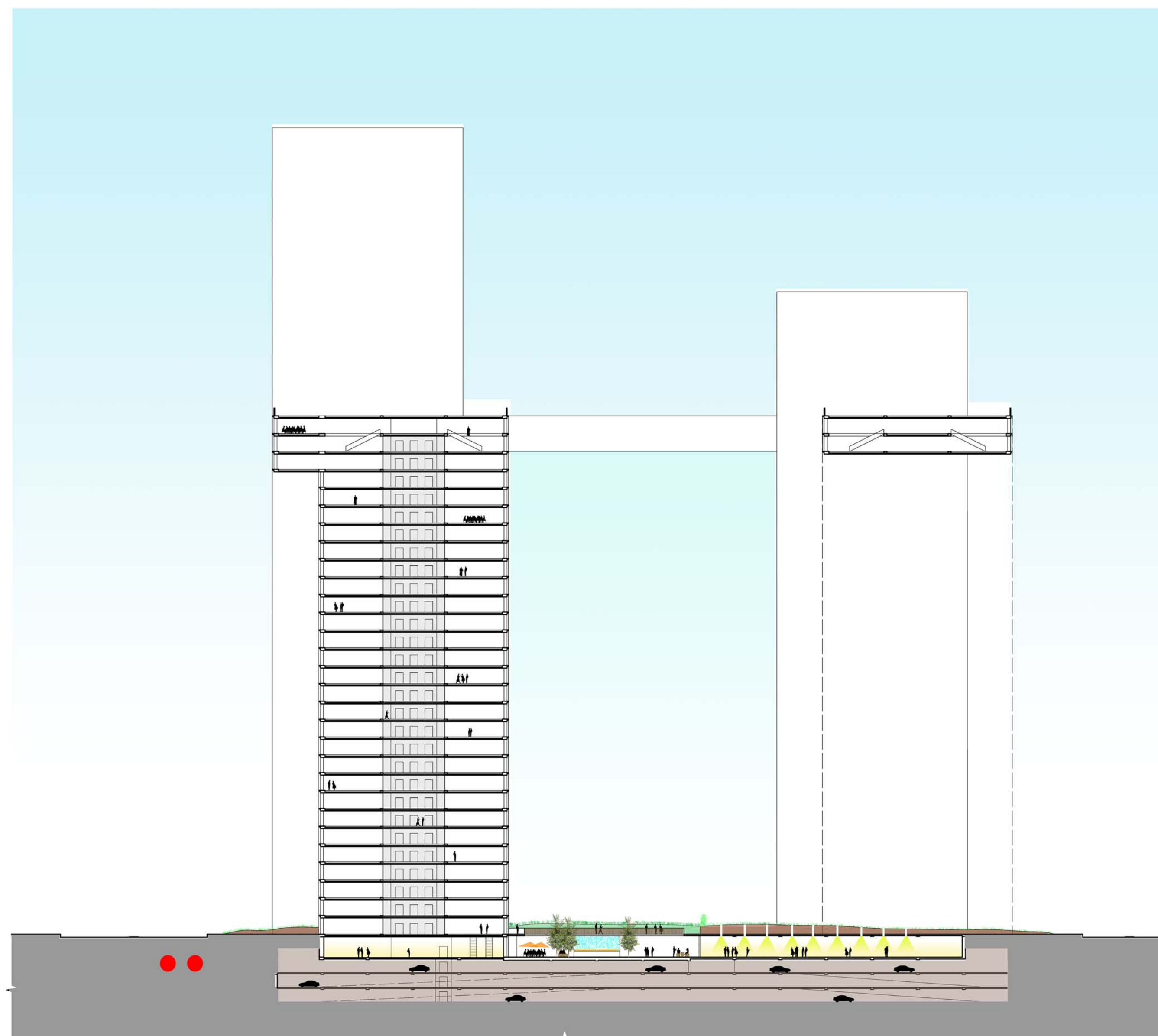
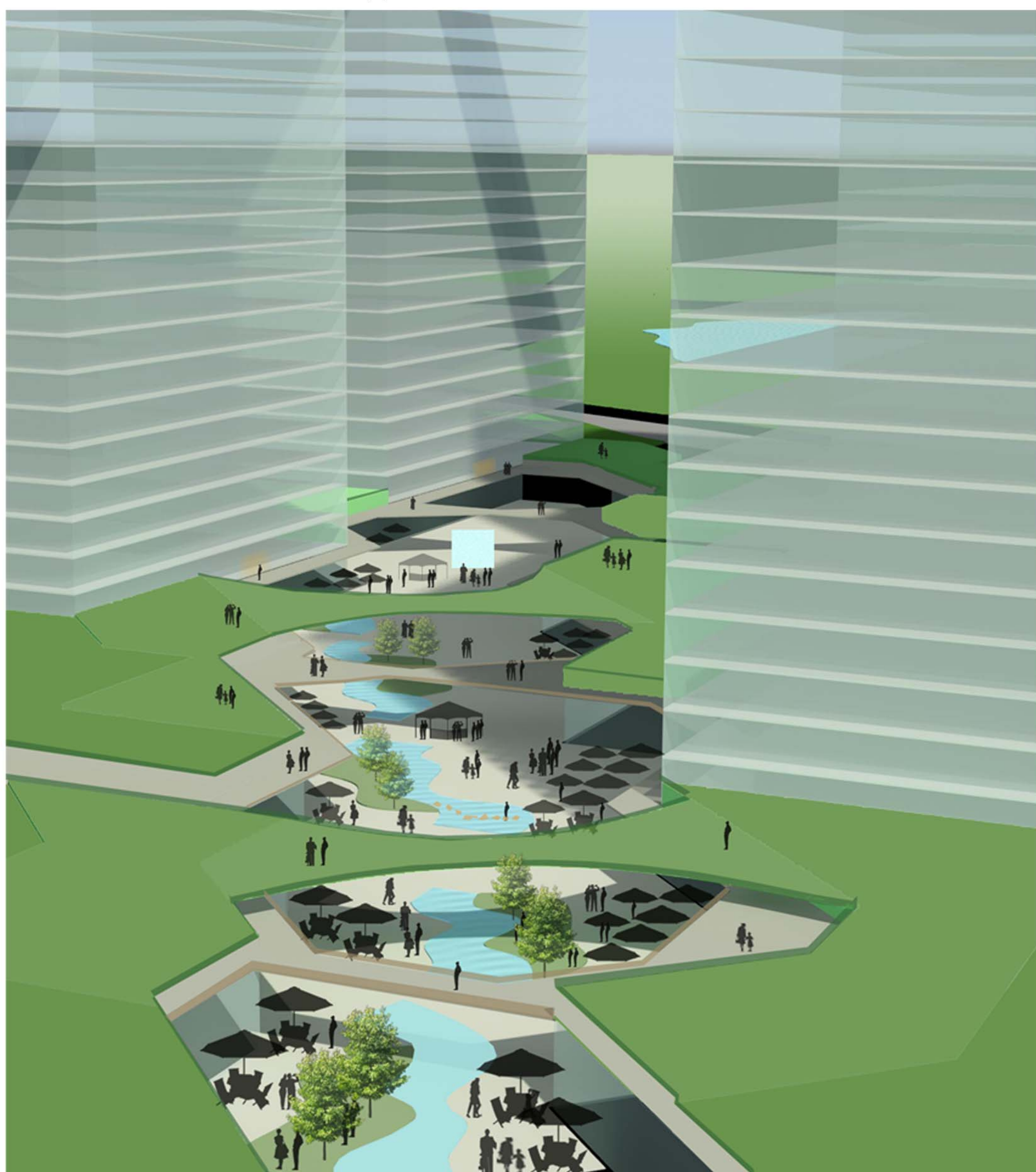
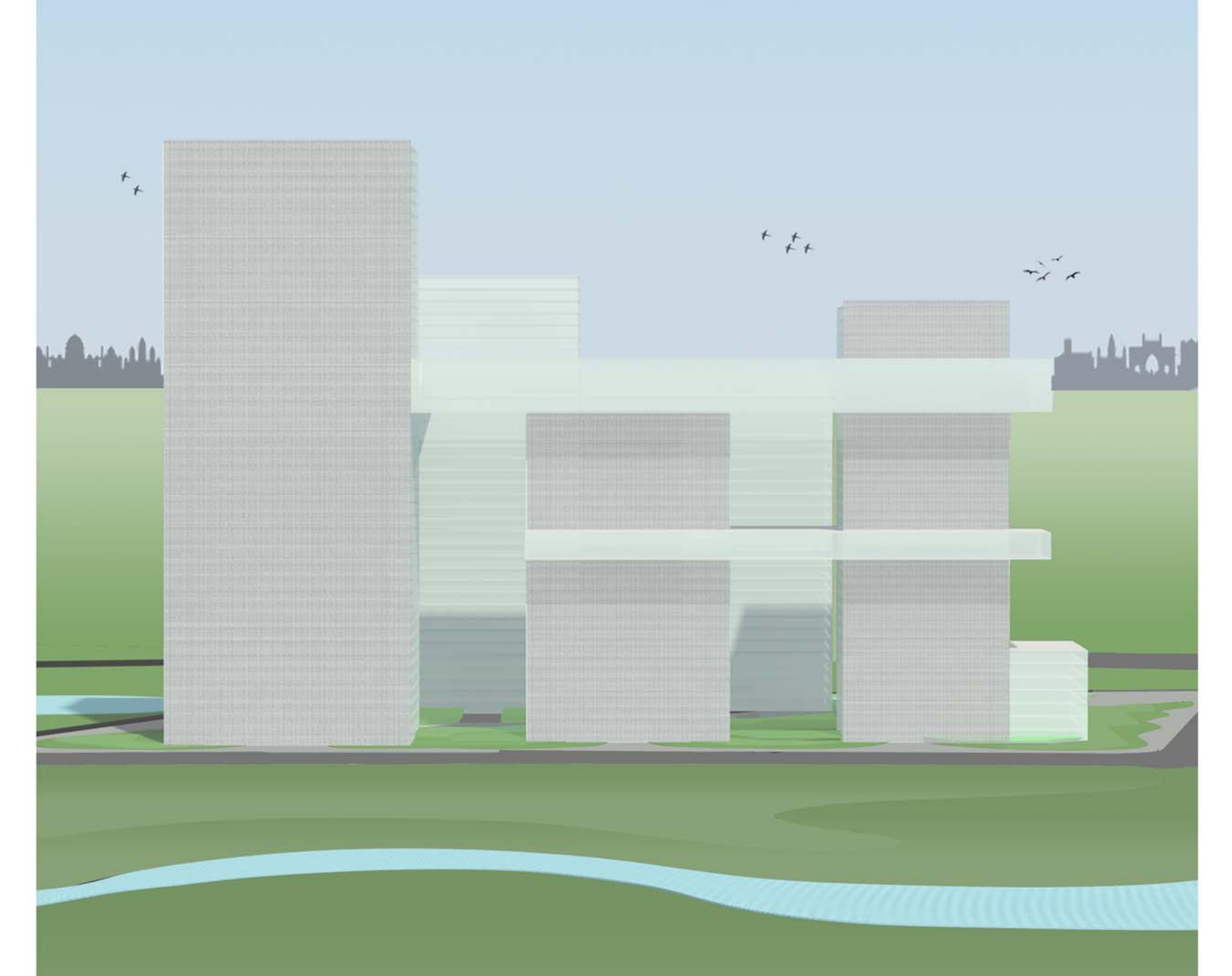
Shruti Shah



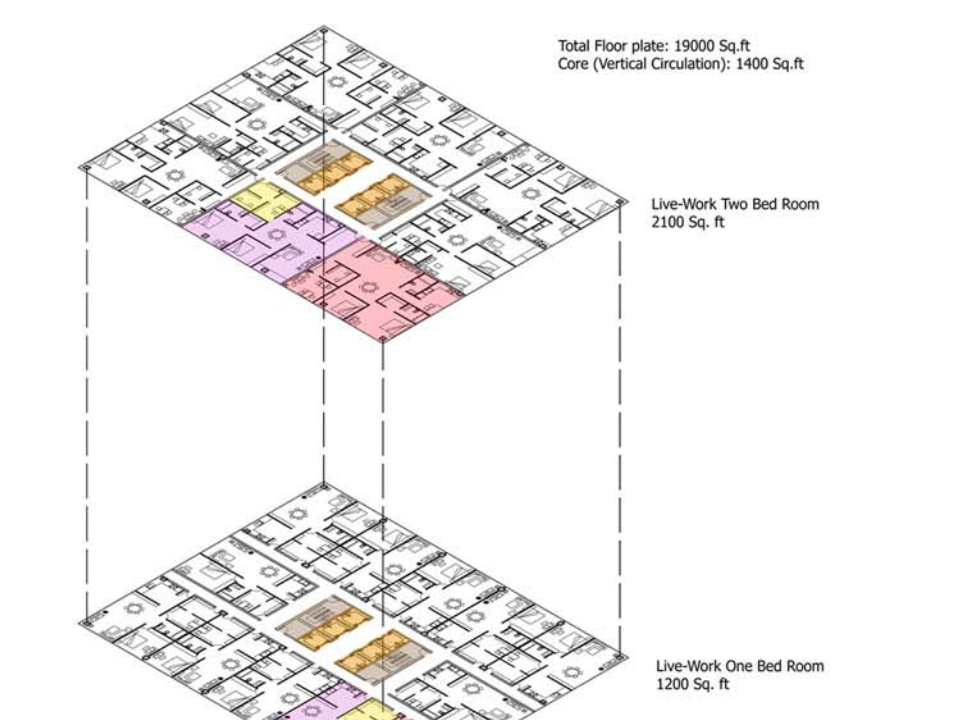
Upper Level Floor Plan



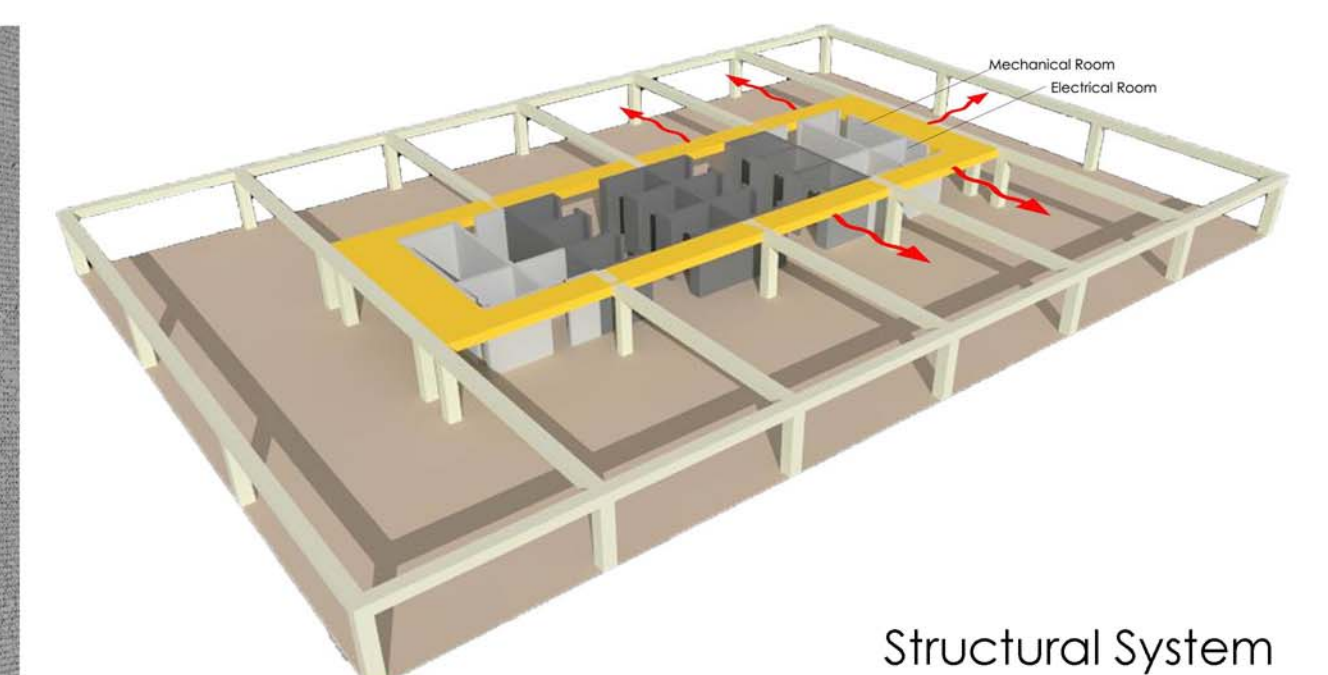
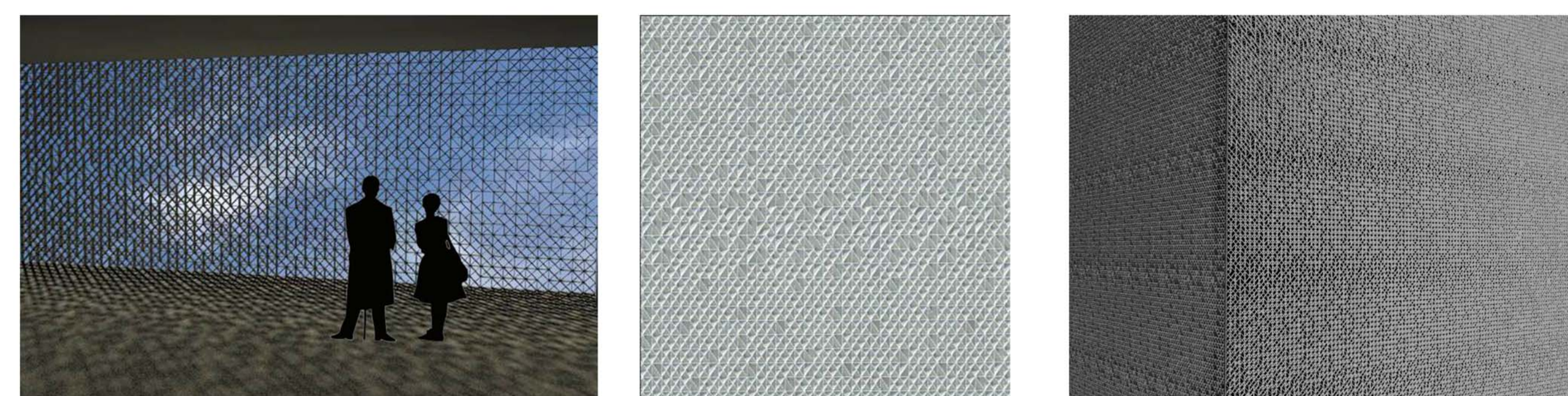
Ground Floor Plan



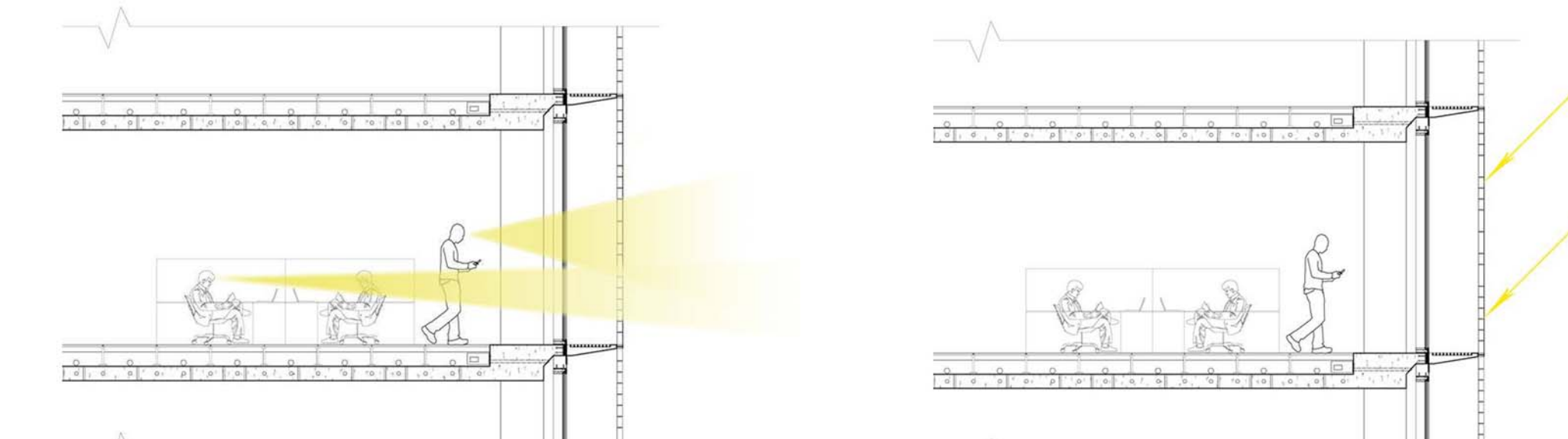
Office Floor Plate Parameter



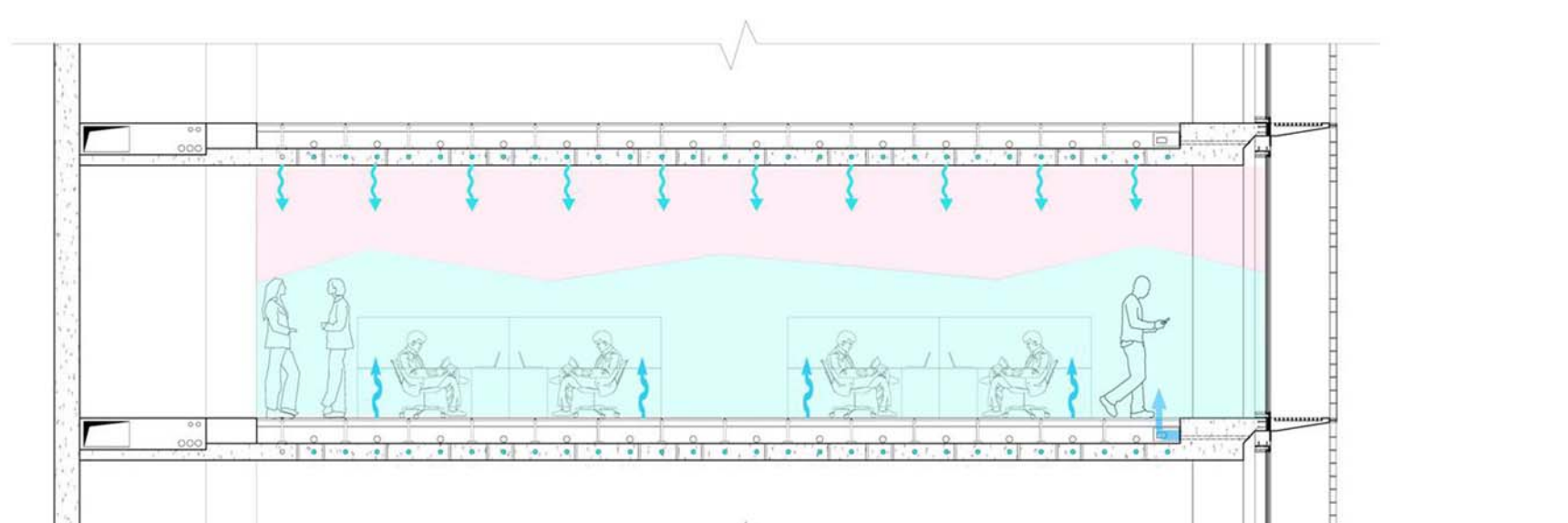
Live-Work Floor Plate Parameter



Structural System



Building Skin



Environmental Control System