

The BIM Book

With the purpose of the IPRO, the IPRO 338 decided that the best action would be a BIM booklet. The booklet would act as a practical guide for Building Imaging Modeling and for the electrical contractor. The IPRO team was split up into three sub teams: Content, Benefits and Implementation. The research and work all teams have done will be represented in a BIM user guide and will be presented as a solution to the Electrical Contractors Association.

Advisor

Dr. Dan Tomal

Team Members

*Jose Luis Guerrero
Kaleo Pedrina
Michael Maloney
Sarah Crites
Jennifer Yi
Sarah Czapl
FrankMalawski
Li Qiu
Bum Kyung Cho
Yoosuk Kim*

Special Thanks

Electrical Contractors Association

IPRO 338
Engineering 1 Building
10 West 332nd Street
Chicago IL 60616

IPRO 338 : Improving Electrical Efficiency with Building Information Modeling (BIM)



Building Information Modeling

“Building Digitally First”

*“The process of modeling and communicating the structure of a building in detail to benefit the entire building lifecycle. BIM facilitates the exchange and use of building information in digital format”
-Tekla*

bimiit

Who is BIM for?

- Architects/Owners
- Structural Engineers
- Construction Managers & General Contractors
- Fabricators/Specialty Contractors
- MEP engineers

IPRO 338's Purpose:

IPRO 338's purpose is to identify ways to improve the efficiency of electrical contracting projects through Building Modeling (BIM) utilization

Objectives

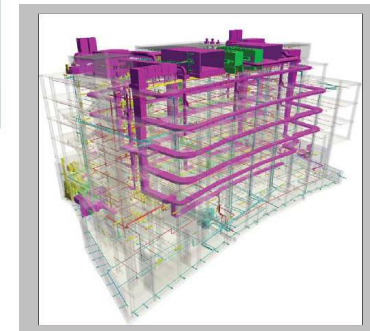
- To Summarize the main sources of the inefficiency in the electrical contracting field
- To access possible solution of inefficiencies, especially Building Information Modeling
- To gain an understanding of technologies such as BIM, with the goal of teaching them to electrical contractors
- To devise and implement a plan for distributing the team's recommendations for improving efficiency to electrical contractors

What is BIM?

Building information modeling is an architectural 3D model drawing. It is used for coordination for a project design and construction. BIM creates a 3D digital representation of the project, which helps for decision making, construction planning, performance predictions and cost estimates. It also keeps the project up to date to keep everyone involved in the project. Overall BIM purpose is make a project more sustainable and efficient.

Why Switch to BIM?

- Cuts the amount draftsmen, allows multiple projects at a time
- Prefabbing allows you to lay piping within BIM at a much faster rate than on the job, which minimizes errors and improve efficiency
- BIM is a straight forward program, placing components and editing as the projects goes along, saving yourself an enormous amount of time
- BIM Instant Schedule sheets count and account for every item, and are formatted, ready to be placed into the drawing set



One of BIM's strong points is the ability for the construction team to coordinate all of the buildings system and trades.

The ECA:

Members of ECA are experienced Contractors in the electrical construction industry throughout Chicago, who offer/provide quality and cost effective services.