



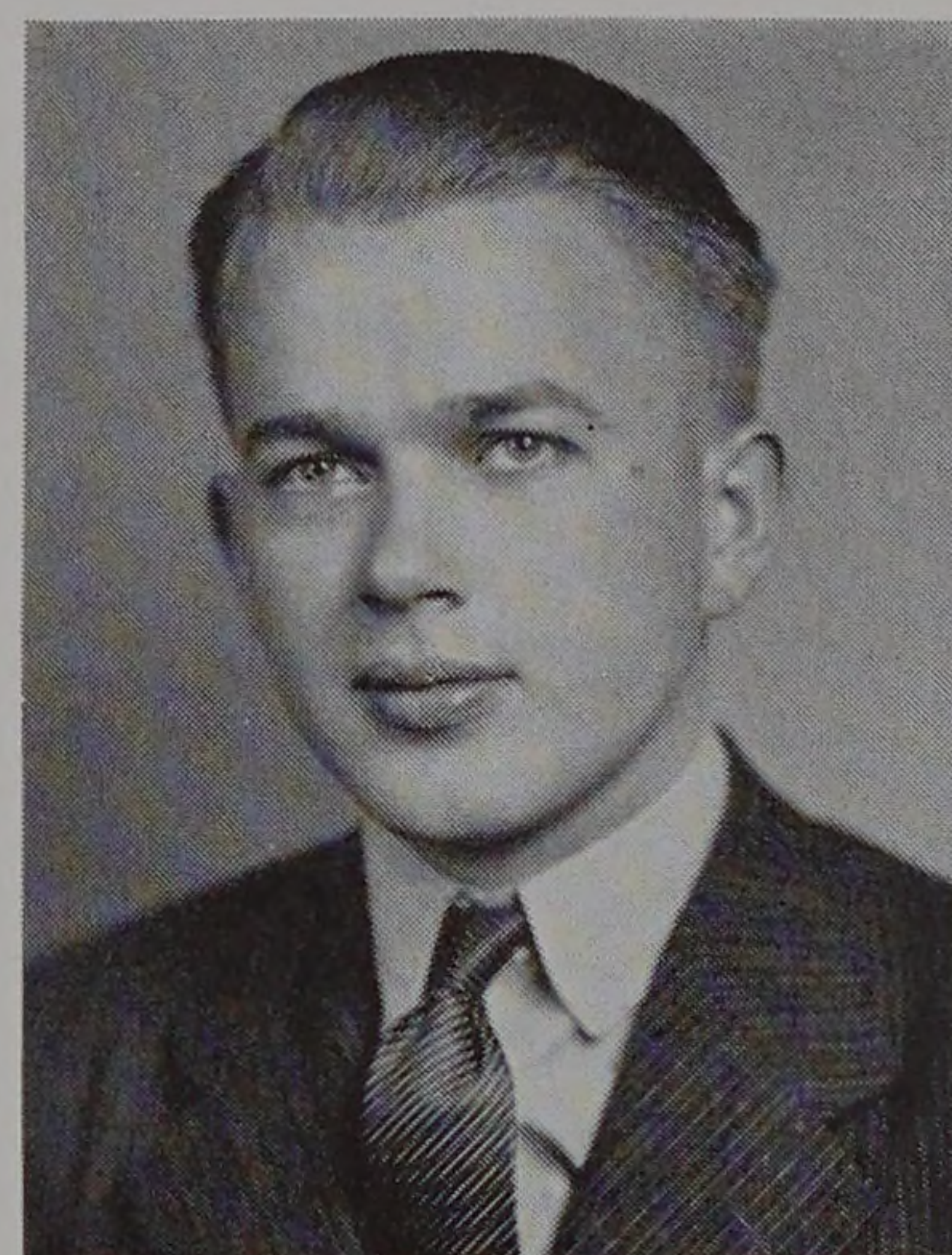
This year's golf team shows promise as the best in recent years. Coach Sammy Bibb's cares are lightened considerably with the return of six lettermen. All of these golfers are capable of shooting in the low seventies.

Although primarily built around two co-operative students, Melvin Korrell and Ralph Schmal, who carded consistently in the low seventies last season, the team will have Donald Sunde, John Fox, Albert Bredlau, and Harry Sieg, other returning lettermen, as its mainstays. Two sophomores, Richard Taylor and Paul Buerckholtz, who showed great promise in the annual fall golf tourney, are also on the team roster.

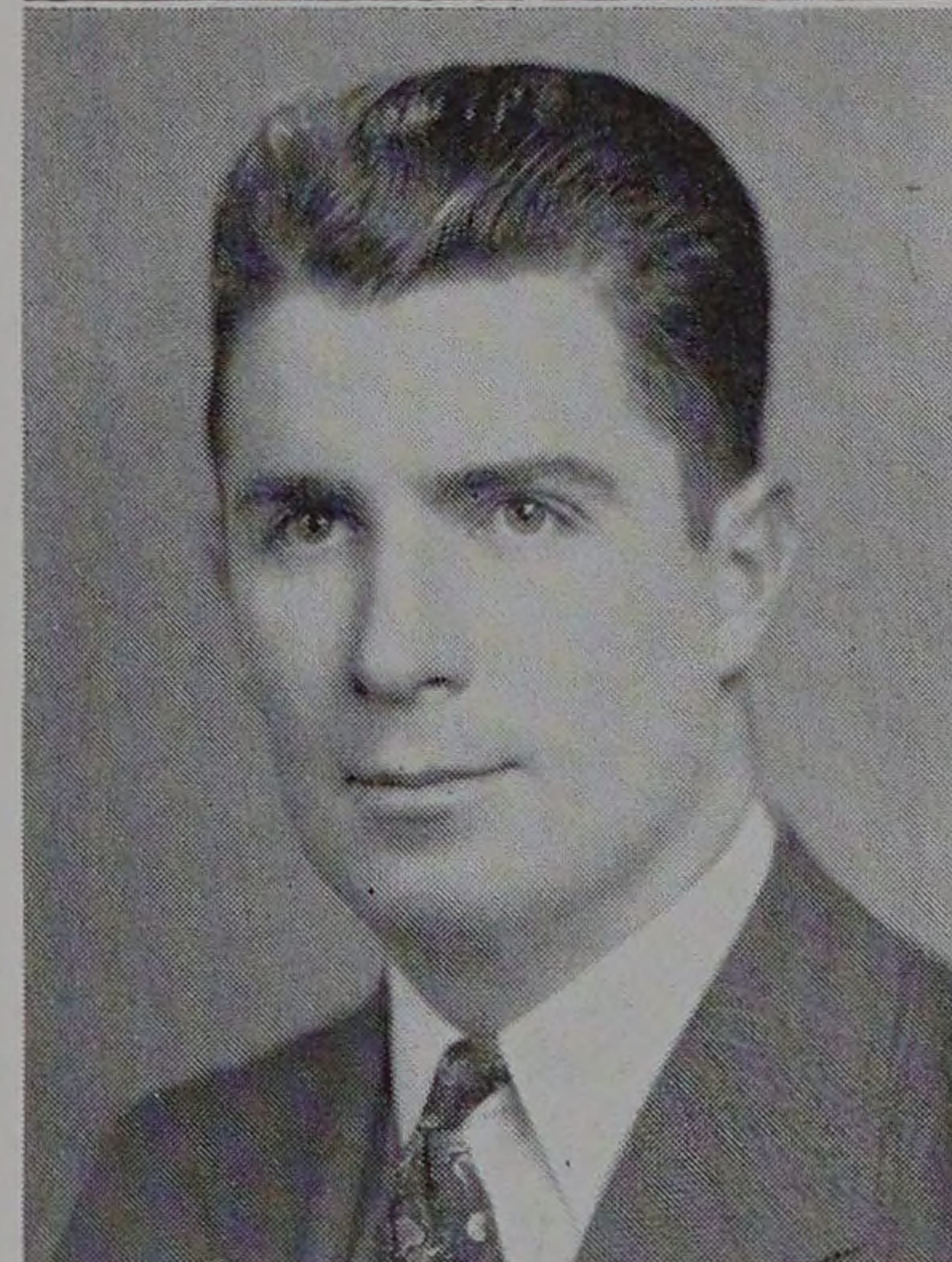
The golf team, divided into an A and a B group, has meets scheduled for each of the squads. Manager Don Mackey has drawn up an unusually stiff schedule, which includes several trips. On the Bibbmen's docket are journeys to Bradley Tech and Wabash College. During Junior Week the golfers invade Michigan for matches with Wayne University, Western State Teachers, and Calvin. Return meets with Bradley and Wayne; and a pair of matches with DeKalb finish this season's schedule.

The 1939 golf team, although not faring so well in its tough schedule, gained the necessary experience which it is hoped will carry its members to a successful 1940 season. The devotees dropped successive meets to Wabash, Beloit, the Alumni, and Indiana State Teachers. However, with every meet, the team showed considerable progress, and finally came into its own downstate, where wins were scored over Bradley Tech and DeKalb.

Sunde
Captain



Mackey
Manager



Bibb
Coach

